

**UNITED STATES  
DEPARTMENT OF THE INTERIOR  
BUREAU OF LAND MANAGEMENT**

## Sundry Notices and Reports on Wells

2004 SEP 7 PM 12 02

1. Type of Well  
GAS

RECEIVED  
070 FARMINGTON NM

2. Name of Operator  
**BURLINGTON**  
RESOURCES OIL & GAS COMPANY LP

3. Address & Phone No. of Operator  
PO Box 4289, Farmington, NM 87499 (505) 326-9700

4. Location of Well, Footage, Sec., T, R, M  
Sec., T--N, R--W, NMPM

Surface Location - 2065' FNL &amp; 2240' FWL, Section 22, T29N, R7W

5. Lease Number  
NMSE078424-B 8F 078399  
6. If Indian, All. or  
Tribe Name

7. Unit Agreement Name

San Juan 29-7 Unit

8. Well Name & Number

9. San Juan 29-7 #66B  
API Well No.

30-039-26806

10. Field and Pool

Blanco Mesaverde

11. County and State

Rio Arriba Co, NM

## 12. CHECK APPROPRIATE BOX TO INDICATE NATURE OF NOTICE, REPORT, OTHER DATA

Type of Submission	Type of Action
<input checked="" type="checkbox"/> Notice of Intent	<input type="checkbox"/> Abandonment <input type="checkbox"/> Change of Plans
<input type="checkbox"/> Subsequent Report	<input type="checkbox"/> Recompletion <input type="checkbox"/> New Construction
<input type="checkbox"/> Final Abandonment	<input type="checkbox"/> Plugging <input type="checkbox"/> Non-Routine Fracturing
	<input type="checkbox"/> Casing Repair <input type="checkbox"/> Water Shut off
	<input type="checkbox"/> Altering Casing <input type="checkbox"/> Conversion to Injection
	<input type="checkbox"/> Other - Directional Drill

## 13. Describe Proposed or Completed Operations

It is intended to directionally drill the subject well in the Blanco Mesaverde formation. Attached is a C102 plat and a directional schematic for the well as well as a new Operational Plan.

Surface Location is 2065' FNL & 2240' FWL, Section 22, T29N, R7W

Proposed bottom hole location is 2003' FNL & 517' FWL, Section 22, T29N, R7W

## 14. I hereby certify that the foregoing is true and correct.

Signed Patsy Clugston Patsy Clugston Title Sr. Regulatory Specialist Date 9/3/04

(This space for Federal or State Office use)

APPROVED BY Original Signed: Stephen MasonTitle \_\_\_\_\_ Date SEP 09 2004

CONDITION OF APPROVAL, if any:

NMOC

DISTRICT II  
611 South First, Artesia, N.M. 88210

DISTRICT III  
1000 Rio Brazos Rd., Aztec, N.M. 87410

DISTRICT IV  
2040 South Pacheco, Santa Fe, NM 87505

# OIL CONSERVATION DIVISION

2040 South Pacheco  
Santa Fe, NM 87505

Submit to Appropriate District Office  
State Lease - 4 Copies  
Fee Lease - 3 Copies

☐ AMENDED REPORT

## WELL LOCATION AND ACREAGE DEDICATION PLAT

<sup>1</sup> API Number 30-039-26806	<sup>2</sup> Pool Code 72319	<sup>3</sup> Pool Name Blanco Mesaverde
<sup>4</sup> Property Code 7465	<sup>5</sup> Property Name SAN JUAN 29-7 UNIT	<sup>6</sup> Well Number 66B
<sup>7</sup> OGRD No. 14538	<sup>8</sup> Operator Name BURLINGTON RESOURCES OIL & GAS, INC.	<sup>9</sup> Elevation 6794'

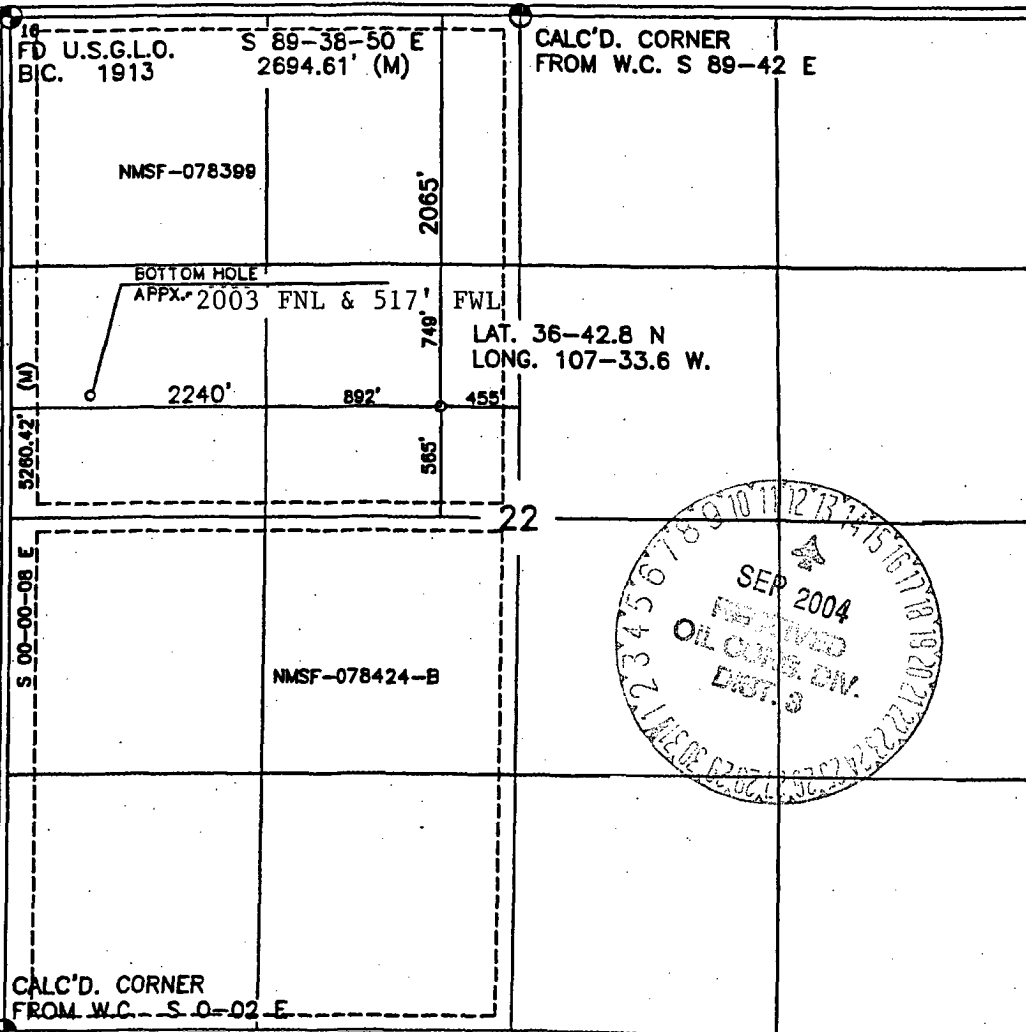
### <sup>10</sup> Surface Location

UL or lot no.	Section	Township	Range	Lot Idn	Feet from the	North/South line	Feet from the	East/West line	County
F	22	29-N	7-W		2065	NORTH	2240	WEST	RIO ARRIBA

### <sup>11</sup> Bottom Hole Location If Different From Surface

UL or lot no.	Section	Township	Range	Lot Idn	Feet from the	North/South line	Feet from the	East/West line	County
E	22	29-N	7-W		2000	NORTH	517'	WEST	RIO ARRIBA
<sup>12</sup> Dedicated Acres MV-W/320			<sup>13</sup> Joint or Infill		<sup>14</sup> Consolidation Code		<sup>15</sup> Order No.		

NO ALLOWABLE WILL BE ASSIGNED TO THIS COMPLETION UNTIL ALL INTERESTS HAVE BEEN CONSOLIDATED  
OR A NON-STANDARD UNIT HAS BEEN APPROVED BY THE DIVISION



### 17 OPERATOR CERTIFICATION

I hereby certify that the information contained herein  
is true and complete to the best of my knowledge and  
belief:

*Patsy Clugston*

Signature

Patsy Clugston

Printed Name

Sr. Regulatory Specialist

Title

9-3-04

Date

### 18 SURVEYOR CERTIFICATION

I hereby certify that the well location shown on this plat  
was plotted from field notes of actual surveys made by  
me or under my supervision and that the same is true  
and correct to the best of my knowledge and belief.

4-26-08  
Date of Survey

Signature and Seal of Professional Surveyor

8894

Certificate Number

## OPERATIONS PLAN

**Well Name:** San Juan 29-7 Unit #66B  
**Location:** Surface - 2065' FNL & 2240' FWL, Section 22, T29N, R7W,  
Bottom Hole - 2003' FNL & 517' FEL, Section 22, T29N, R7W  
Rio Arriba County, New Mexico  
Latitude 36° 36.71333'N, Longitude 107° 56000'W Surface Location  
Latitude 36° 713119'N, Longitude 107° 569091'W Bottom Hole Location  
**Formation:** Blanco Mesa Verde  
**Elevation:** 6794' GL

<u>Formation Tops:</u>	<u>TMD</u> <u>Top</u>	<u>TVD</u> <u>Top</u>	<u>TMD</u> <u>Bottom</u>	<u>Contents</u>
Surface	San Jose		2744'	
Ojo Alamo	2744'	2656'	2891'	aquifer
Kirtland	2891'	2796'	3288'	gas
Fruitland	3288'	3173'	3727'	
Pictured Cliffs	3727'	3591'	3901'	gas
Lewis	3901'	3756'	4390'	gas
Huerfanito Bentonite	4390'	4221'	4763'	gas
Chacra	4763'	4576'	5551'	gas
Massive Cliff House	5551'	5326'	5657'	
Menefee	5657'	5426'	5993'	gas
Point Lookout	5993'	5746'		gas

TD                                  6414' MD                  6146'      TVD

### Logging Program:

Cased Hole - CBL-GR-TD to surface

### Mud Program:

<u>Interval</u>	<u>Type</u>	<u>Weight</u>	<u>Vis.</u>	<u>Fluid Loss</u>
0- 300'	Spud	8.4-9.0	40-50	no control
300- 6414'	Non-dispersed	8.4-9.0	30-60	less than 8

### Drilling:

#### Surface Hole:

Drill to surface casing point of 300' and set 9 5/8" casing.

#### Production Hole:

Mud drill to kick off point of 537'. At this point the well will be directionally drilled by building 3.0 degrees per 100' with an azimuth of 272 degrees. The end of the build will be at a TVD of 1127', a TMD of 1137', hd of 93' and an angle of 18 degrees. This angle and azimuth will be held to a total depth of 6146' TVD and 6414' TMD

### Materials:

#### Casing program:

<u>Hole Size</u>	<u>Interval</u>	<u>Size</u>	<u>Weight</u>	<u>Vis.</u>
	<u>TMD</u>	<u>TVD</u>		
12 1/4"	300'	300'	9 5/8"	32.3#      H-40
7 7/8"	6414'	6146'	4 1/2"	11.6#      L-80

Tubing Program:

2 3/8" 0' 6414' 2 3/8" 4.7# J-55

**Wellhead Equipment**

9 5/8" x 4 1/2" x 2 3/8" - 11" (2000 psi) wellhead assembly

Cementing:

9 5/8" surface casing conventionally drilled -

Cement with 220 sacks Type III cement with 0.25 pps Celloflake, 3% calcium chloride. (282 cu ft-200% excess, bring cement to surface). Wait on cement appropriate time until cement achieves 250 psi compressive strength at 60 degrees F. prior to nipple up of BOPE. Wait on cement for 8 hrs for conventionally set holes before pressure testing or drilling out from under surface.

Saw tooth guide shoe on bottom. Bowspring centralizers will be run in accordance with Onshore Order #2.

4 1/2" production casing - Lead w/948 sxs Premium Lite HS FM cement w/3% calcium chloride, 0.25 pps celloflake, 5 pps LCM-1, 0.4% fluid loss, 0.4% SMS. Tail w/90 sxs Type III cmt w/1% calcium chloride, 0.25 pps celloflake, 0.2% fluid loss (2145 cu ft, 50% excess to circulate to surface). If cement does not circulate to surface, a CBL or a temperature survey will be run to determine TOC.

4 1/2" production casing alternative slurry - stage collar @ 2988' TMD. First stage: pump 490 sxs Premium Lite HS FM w/ 3% calcium chloride, 0.25 pps celloflake, 5 pps LCM-1, 0.4% fluid loss, 0.4% SMS. Tail with 90 sxs Type III cmt w/1% calcium chloride, 0.25 pps celloflake, 0.2% fluid loss. Second stage: pump 457 sxs Premium Lite w/3% calcium chloride, 0.25 pps celloflake, 5 pps LCM-1, 0.4% fluid loss, 0.4% SMS (2145 cu ft of slurry, 50% excess).

BOP and Tests:

Surface to production TD - 11", 2000 psi double gate BOP stack (Reference Figure #1).

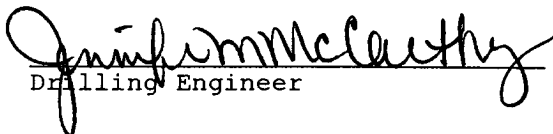
Prior to drilling out surface casing, test rams and casing to 600 psi for 30 minutes.

Surface to Total Depth - choke manifold (Reference Figure #2).

Pipe rams will be actuated at least once each day and blind rams will be actuated once each trip to test proper functioning. A Kelly cock valve and drill string safety valves to fit each drill string will be maintained and available on the rig floor.

Additional Information:

- This gas is dedicated.
- The west half of section 22 is dedicated to the Mesaverde of this well.
- New casing will be utilized.
- Pipe movement (reciprocation) will be done if hole conditions permit.
- No abnormal pressure zones are expected.

  
Drilling Engineer

9-3-04  
Date