

UNITED STATES
DEPARTMENT OF THE INTERIOR
BUREAU OF LAND MANAGEMENT

SUNDRY NOTICES AND REPORTS ON WELLS

Do not use this form for proposals to drill or to deepen or reentry to a different reservoir.

Use "APPLICATION FOR PERMIT---" for such proposals

SUBMIT IN TRIPLICATE

1. Type of Well

☒ Oil ☐ Gas ☐ Other

2. Name of Operator

D.J. Simmons Co.

3. Address and Telephone No.

1009 Ridgeway Place, Suite 200, Farmington NM 87401 (505) 326-3753

4. Location of Well (Footage, Sec., T., R., M., or Survey Description)

1980' FSL x 950' FEL, Section 7, T24N, R4W

5. Lease Designation and Serial No.

Contract 111

6. If Indian, Allottee or Tribe Name

Jicarilla

7. If Unit or CA, Agreement Designation

8. Well Name and No.

Jicarilla H #116

9. API Well No.

30-039-22161

10. Field and Pool, or Exploratory Area

Otero/Chacra

11. County or Parish, State

Rio Arriba County, New Mexico

12. CHECK APPROPRIATE BOX(S) TO INDICATE NATURE OF NOTICE, REPORT, OR OTHER DATA

TYPE OF SUBMISSION

☒ Notice of Intent

☐ Subsequent Report

☐ Final Abandonment Notice

TYPE OF ACTION

☐ Abandonment

☒ Recompletion

☒ Plugging Back

☐ Casing Repair

☐ Altering Casing

☐ Other _____

☐ Change of Plans

☐ New Construction

☐ Non-Routine Fracturing

☐ Water Shut-Off

☐ Conversion to Injection

☐ Dispose Water

(Note: Report results of multiple

Completion or Recompletion Report and

13. Describe Proposed or Completed Operations (Clearly state all pertinent details, and give pertinent dates, including estimated date of starting any proposed work. If well is directionally drilled, give subsurface locations and measured and true vertical depth for all markers and zones pertinent to this work.)*

D.J. Simmons, Inc. (DJS) has determined that the production casing integrity has been breached, probably by corrosion, below 3268'. DJS intends to plug the well back and re-complete in the Chacra as per the attached procedure. A well bore diagram is also attached.

CONDITIONS OF APPROVAL

Adhere to previously issued stipulations.

14. I hereby certify that the foregoing is true and correct

Signed

Robert R. Griffie

Title Operations Manager

Date: 10/07/04

(This space for Federal or State office use)

Approved by

Conditions of approval, if any:

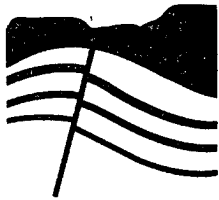
Title

Date

Title 18 U.S.C. Section 1001, makes it a crime for any person knowingly and willfully to make to any department or agency of the United States any false, fictitious or fraudulent statements or representations as to any matter within its jurisdiction.

*See Instruction on Reverse Side

SEE ATTACHED FOR
NMOCD CONDITIONS OF APPROVAL



DJ SIMMONS, INC.

1009 Ridgeway Place
Suite 200
Farmington,
New Mexico 87401

505-326-3753
505-327-4659 FAX
info@djsimmonsinc.com
www.djsimmonsinc.com

Date: 10/05/2004

**Jicarilla H #116
Chacra Re-completion Procedure**

Prepared by: R. Griffie

Refer to attached well bore diagram. Formation tops on diagram were Arco's original picks. Corrected DJS tops, by Lisa Gusek, are listed below.

1. MIRU Franks Rig 1. ND well head, NU BOPE.
2. TOH with 2 3/8" tubing. Replace any questionable or thin joints.
3. TIH with SN on bottom to 7100'.
4. Drop standing valve and pressure test tubing to 2000 psi.
5. TOH.
6. PU cement retainer. TIH and set retainer at 6910'.
7. RU Schlumberger. Establish injection rate with water. Pump Plug #1 - Dakota. Squeeze under retainer with 45 sks class 'G'. Sting out of retainer. Spot 10 sk class 'G' balanced plug on top of retainer.
8. TOH.
9. PU cement retainer. TIH and set retainer at 5903'.
10. Establish injection rate with water. Pump Plug #2 - Gallup. Squeeze under retainer with 50 sks class 'G'. Sting out of retainer. Spot 10 sk class 'G' balanced plug on top of retainer.
11. TOH.
12. RU Blue Jet. Run CBL log from 3750' to TOC (correlate to original open hole porosity log for later perforating). Perforate 2 squeeze holes at 4360' and 2 squeeze holes at 4200'. RD Blue Jet.
13. PU test packer. TIH and set packer at 4250'. Establish circulation down tubing under packer, through squeeze holes at 4360', up casing hole annulus, back into casing through squeeze holes at 4200', up casing tubing annulus, and out casing valve. Release packer. TOH.
14. PU cement retainer. TIH and set retainer at 4250'.
15. Pump plug #3 - Mesa Verde. Suicide squeeze under retainer with 70 sks class 'G'. Sting out of retainer. Spot 10 sk class 'G' balanced plug on top of retainer.
16. TOH w/ 10 stands. Reverse circulate out tubing.
17. Evaluate CBL run in step 12. Determine if further squeeze work is required through Chacra interval. Design and perform additional squeeze work if needed.
18. WOC 12 hours from step 16 or 17 before proceeding. Observe if hole stays full. If hole does not stay full, a bridge plug may be required.
19. RU casing crew and run 550' +/-, 4", 9.5 ppf, J55, flush joint liner (ultimate flush joint connection). Run guide shoe on bottom and float collar one joint from bottom. Install Baker liner hanger on top with 3 1/2" tie back sleeve. Run liner in hole on 2 3/8" tubing. Set shoe at 3750', top of liner at 3200'.
20. Hang liner. RU Schlumberger. Cement liner in place with 30 sks Class 'G'. Pump cement at 1.5 bpm max, or as recommended by Schlumberger to keep placement pressures as low as possible. Release setting tool. TOH 10 stands. Reverse out cement.
21. WOC a minimum of 72 hours, or as indicated by pilot testing. Cement hardness much reach maximum before proceeding.
22. PU special O.D. bit from Knight Oil Tools and 500' of 1 1/2", 4.93 ppf, MT tubing (Knight rental). RIH on 2 3/8" tubing. Clean out liner top and clean out to PBD.
23. TOH.
24. TIH with tubing string described above, open ended. Spot 75 gals 7 1/2 % HCL across Chacra perforation interval. TOH.

DJ SIMMONS, INC.

25. RU Blue Jet. Perforate with 4 jspf as follows: 3548' – 3552', 3562' – 3566', 3574' – 3580', 3586', 3610', 3618', 3643', 3654' – 3656', 3658', 3662' – 3667', and 3674' – 3678' . R.D. Blue Jet.
26. PU 3 ½" frac string. TIH and tie back into 4" liner.
27. RU Schlumberger and Stinger. Pressure up backside above liner top to 100 psi. Monitor pressure throughout frac job.
28. Frac well as per Schlumberger procedure with 65Q, N2, ClearFrac fluid.
29. RD Schlumberger.
30. Flow well back and clean up. Perform production test as required.
31. Release and POOH with 3 ½" frac string.
32. TIH with 2 3/8" tubing with SN one joint from bottom. Land tubing at 3674' +/-.
33. ND BOPE, NU well head.
34. Release well to production.

4" Ulitimate Flush Joint Liner Data

O.D. of connection and tube = 4" I.D. = 3.476" wt = 9.5 ppf grade = J55
Setting liner in 5 ½", 15.50 ppf, J55 casing. ID = 4.950"
2 3/8" tubing coupling O.D. = 3.063"

1 ½", 4.93 ppf, MT Tubing Data

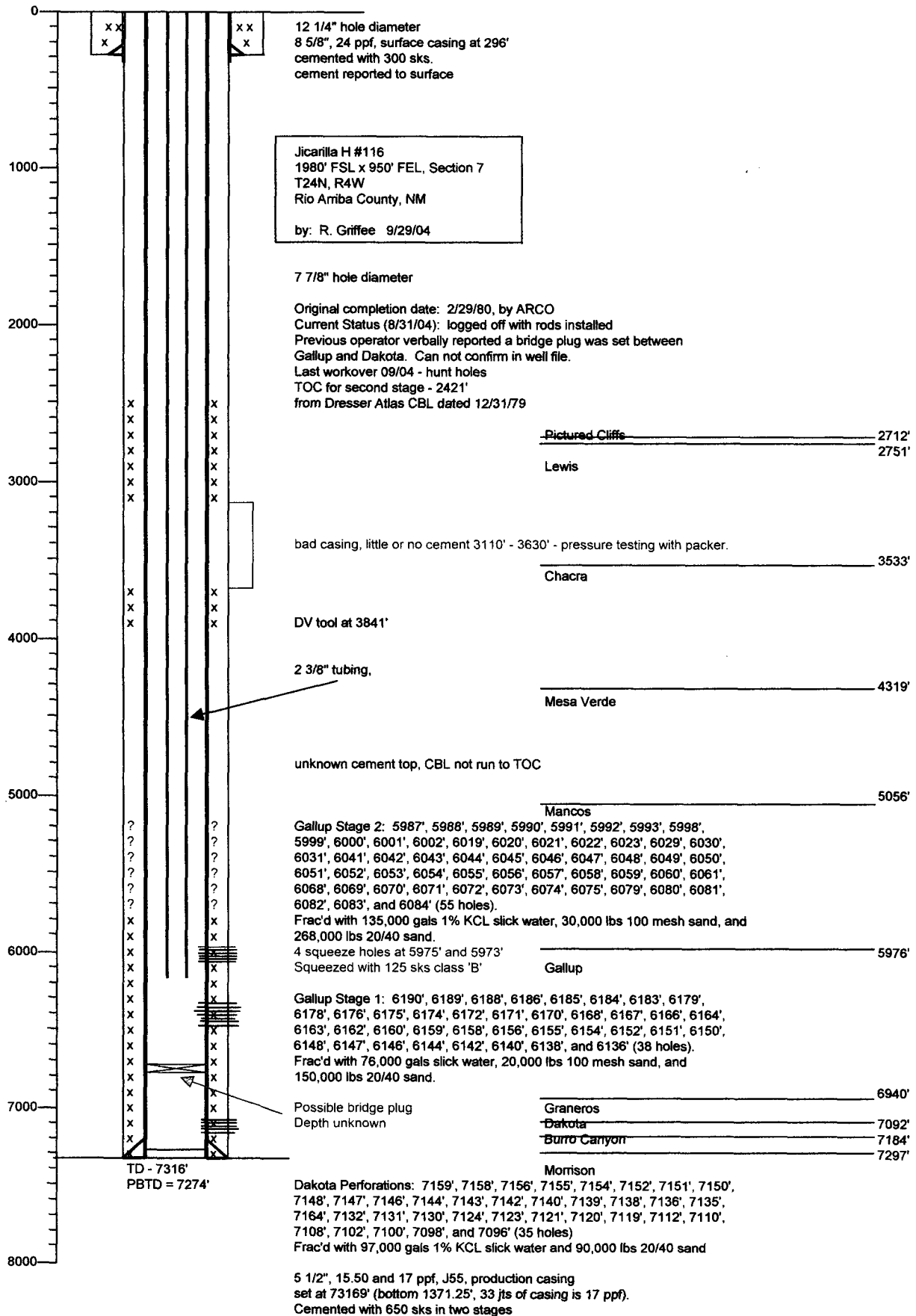
Tool joint OD = 2", make-up torque = 950, T = 114,000 lbs, YP = 23,579 psi

Formation Tops

FORMATION

TOP	Depth (RKB)
Base Ojo	2360'
PC	2680'
H. Bent	3068'
Chacra	3474'
MV	4302'
P Lookout	4863'
Mancos	5050'
Gallup	5953'
Graneros	6938'
Dakota	6960'
Bur Cyn	7208'

Elevations: 6720' GL, 6734' RKB



Submit 3 Copies To Appropriate District
Office
District I
1625 N. French Dr., Hobbs, NM 88240
District II
1301 W. Grand Ave., Artesia, NM 88210
District III
1000 Rio Brazos Rd., Aztec, NM 87410
District IV
1220 S. St. Francis Dr., Santa Fe, NM
87505

State of New Mexico
Energy, Minerals and Natural Resources

Form C-103
May 27, 2004

OIL CONSERVATION DIVISION
1220 South St. Francis Dr.
Santa Fe, NM 87505

SUNDRY NOTICES AND REPORTS ON WELLS (DO NOT USE THIS FORM FOR PROPOSALS TO DRILL OR TO DEEPEN OR PLUG BACK TO A DIFFERENT RESERVOIR. USE "APPLICATION FOR PERMIT" (FORM C-101) FOR SUCH PROPOSALS.)		WELL API NO. 30-039-22161
1. Type of Well: Oil Well <input checked="" type="checkbox"/> Gas Well <input type="checkbox"/> Other <input type="checkbox"/>		5. Indicate Type of Lease STATE <input type="checkbox"/> FEE <input type="checkbox"/>
2. Name of Operator D. J. Simmons, Inc.		6. State Oil & Gas Lease No. Contract 111
3. Address of Operator 1009 Ridgeway P. Suite 200, Farmington, New Mexico		7. Lease Name or Unit Agreement Name Jicarilla H
4. Well Location Unit Letter <u>I</u> : <u>1980</u> feet from the <u>South</u> line and <u>950</u> feet from the <u>East</u> line Section <u>7</u> Township <u>24N</u> Range <u>4W</u> NMPM County <u>Rio Arriba</u>		8. Well Number <u>116</u>
11. Elevation (Show whether DR, RKB, RT, GR, etc.) <u>6729 GR</u>		9. OGRID Number <u>5578</u>
Pit or Below-grade Tank Application <input type="checkbox"/> or Closure <input type="checkbox"/>		
Pit type <u>production</u> Depth to Groundwater <u>>100'</u> Distance from nearest fresh water well <u>>100'</u> Distance from nearest surface water <u>>100'</u>		
Pit Liner Thickness: <u>12 mil</u> Below-Grade Tank: Volume <u>N/A</u> bbls; Construction Material <u>Lined/Earthen</u>		

12. Check Appropriate Box to Indicate Nature of Notice, Report or Other Data

NOTICE OF INTENTION TO:

PERFORM REMEDIAL WORK ☐ PLUG AND ABANDON ☐
TEMPORARILY ABANDON ☐ CHANGE PLANS ☐
PULL OR ALTER CASING ☐ MULTIPLE COMPL ☐

☒ OTHER: Plug Back / Recomplete

SUBSEQUENT REPORT OF:

REMEDIAL WORK ☐ ALTERING CASING ☐
COMMENCE DRILLING OPNS. ☐ P AND A ☐
CASING/CEMENT JOB ☐

OTHER: ☐

13. Describe proposed or completed operations. (Clearly state all pertinent details, and give pertinent dates, including estimated date of starting any proposed work). SEE RULE 1103. For Multiple Completions: Attach wellbore diagram of proposed completion or recompletion.

D. J. Simmons, Inc.(DJS) has determined that the production casing integrity has been breached, probably by corrosion, below 3268'. DJS intends to plug the well back and re-complete in the Chacra as per the attached procedure. A well bore diagram is also attached. This will include the construction of an earthen workover pit. Pit will be closed per NMOCD guide lines.

I hereby certify that the information above is true and complete to the best of my knowledge and belief. I further certify that any pit or below-grade tank has been/will be constructed or closed according to NMOCD guidelines ☒, a general permit ☐ or an (attached) alternative OCD-approved plan ☐.

SIGNATURE Robert R. Griffie TITLE: Operation Manager DATE October 7, 2004

Type or print name Robert R. Griffie E-mail address: rgriffie@djsimmonsinc.com Telephone No. 505 326- 3753

For State Use Only

APPROVED BY: _____ TITLE _____ DATE _____

Conditions of Approval (if any):

District I
1625 N. French Dr., Hobbs, NM 88240
District II
1301 W. Grand Avenue, Artesia, NM 88210
District III
1000 Rio Brazos Rd., Aztec, NM 87410
District IV
1220 S. St. Francis Dr., Santa Fe, NM 87505

State of New Mexico
Energy, Minerals & Natural Resources Department
OIL CONSERVATION DIVISION
1220 South St. Francis Dr.
Santa Fe, NM 87505

Form C-102
Revised June 10, 2003
Submit to Appropriate District Office
State Lease - 4 Copies
Fee Lease - 3 Copies

☐ AMENDED REPORT

WELL LOCATION AND ACREAGE DEDICATION PLAT

¹ API Number 30-039-22161	² Pool Code 82329	³ Pool Name Otero/ Chacra
⁴ Property Code 26790	⁵ Property Name Jicarilla H #116	⁶ Well Number 116
⁷ OGRID No. 5578	⁸ Operator Name DJ Simmons, Inc	⁹ Elevation 6729

¹⁰ Surface Location

UL or lot no.	Section	Township	Range	Lot Idn	Feet from the	North/South line	Feet from the	East/West line	County
I	7	24N	4W		1980	South	950	East	Rio Arriba

¹¹ Bottom Hole Location If Different From Surface

UL or lot no.	Section	Township	Range	Lot Idn	Feet from the	North/South line	Feet from the	East/West line	County

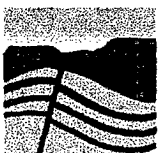
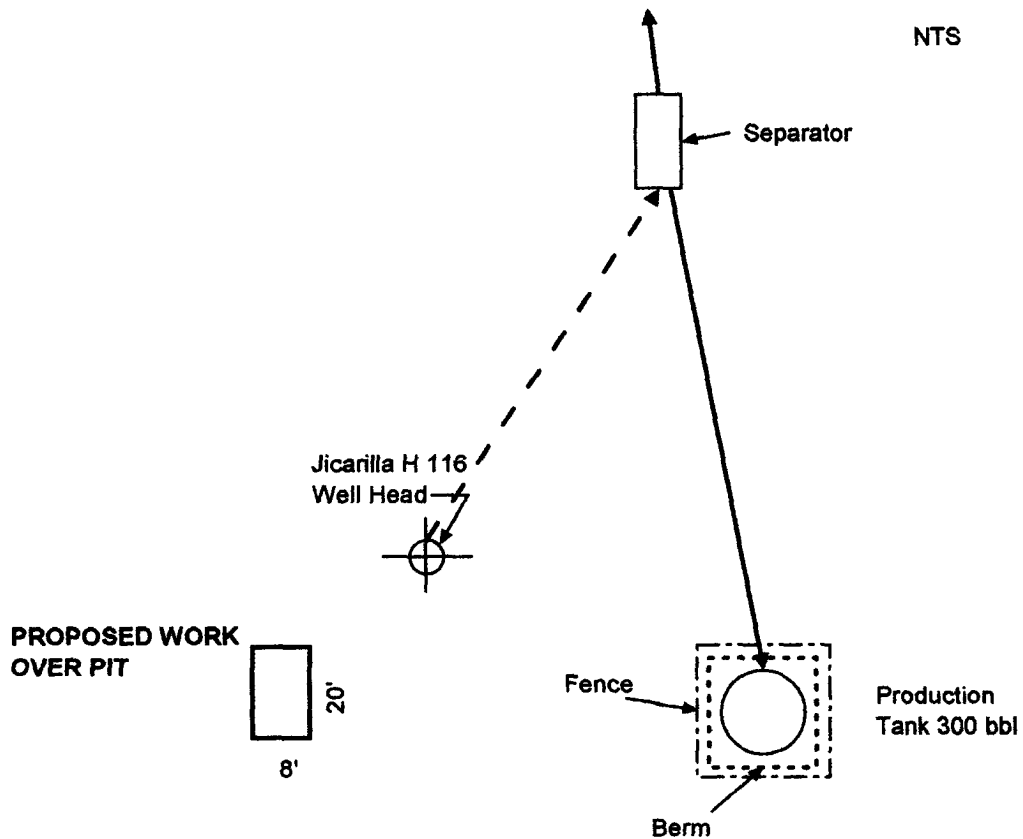
¹² Dedicated Acres 160	¹³ Joint or Infill	¹⁴ Consolidation Code	¹⁵ Order No.
--------------------------------------	-------------------------------	----------------------------------	-------------------------

NO ALLOWABLE WILL BE ASSIGNED TO THIS COMPLETION UNTIL ALL INTERESTS HAVE BEEN CONSOLIDATED OR A NON-STANDARD UNIT HAS BEEN APPROVED BY THE DIVISION

¹⁶ 	¹⁷ OPERATOR CERTIFICATION I hereby certify that the information contained herein is true and complete to the best of my knowledge and belief. Signature Robert R. Griffie Printed Name Operations Manager rgriffie@djsimmonsinc.com Title and E-mail Address OCT 7, 2004 Date
	¹⁸ SURVEYOR CERTIFICATION I hereby certify that the well location shown on this plat was plotted from field notes of actual surveys made by me or under my supervision, and that the same is true and correct to the best of my belief. NOTE: Original Survey Date June 5, 1979 By James P Leese Date of Survey Signature and Seal of Professional Surveyor: 1463 Certificate Number



NTS



DJ SIMMONS, INC.

DJ SIMMONS, INC.

1009 Ridgeway Place, Ste.200
Farmington, NM 87401
PH. 505 326 3753
FAX. 505 327 4659

Reviewed: KM

Approved: RRG

Drawn: CDS

Date: 09/07/04

Pit Location Map

Jicarilla H 116
Sec 7, T24N, R4W
1980' FSL x 950' FEL
Rio Arriba County, New Mexico

BLM CONDITIONS OF APPROVAL

Operator D.J. Simmons Co.

Well Name Jicarilla H # 116

Legal Location 1980 FSL / 950 FEL

Sec 7, T. 24N, R. 4W

Lease Number Contract #111

- 1 Pits will be fenced during workover operation**
- 2. All disturbances will be kept on existing pad.**
- 3. Pits will be lined with an impervious material at least 12 mils thick.**
- 4. Empty and reclaim pit after work completed.**