

UNITED STATES
DEPARTMENT OF THE INTERIOR
BUREAU OF LAND MANAGEMENTFORM APPROVED
OMB NO. 1004-0137
Expires March 31, 2007

SUNDRY NOTICES AND REPORTS ON WELLS

Do not use this form for proposals to drill or to re-enter an abandoned well. Use Form 3160-3 (APD) for such proposals.

SUBMIT IN TRIPLICATE - Other instructions on reverse side

1. Type of Well

☐ Oil Well ☒ Gas Well ☐ Other

2. Name of Operator

XTO Energy Inc.

3a. Address

2700 Farmington Ave., Bldg. K, Ste 1 Farmington,

3b. Phone No. (include area code)

505-324-1090

4. Location of Well (Footage, Sec., T., R., M., or Survey Description)

660'FSL & 660'FEL; SEC 31P, T30N, R11W

5. Lease Serial No.

NMMD48574

6. If Indian, Allottee or Tribe Name

7. If Unit or CA/Agreement, Name and/or No.

8. Well Name and No.

PAN AMERICAN FED #3
GAS COM B

9. API Well No.

30-045-30710

10. Field and Pool, or Exploratory Area

AZTEC PICTURED CLIFFS

11. County or Parish, State

SAN JUAN NM

12. CHECK APPROPRIATE BOX(ES) TO INDICATE NATURE OF NOTICE, REPORT, OR OTHER DATA

TYPE OF SUBMISSION

☒ Notice of Intent☐ Subsequent Report☐ Final Abandonment Notice

TYPE OF ACTION

☐ Acidize☐ Alter Casing☐ Casing Repair☐ Change Plans☐ Convert to Injection☐ Deepen☐ Fracture Treat☐ New Construction☐ Plug and Abandon☐ Plug Back☐ Production (Start/Resume)☐ Reclamation☒ Recomplete☐ Temporarily Abandon☐ Water Disposal☐ Water Shut-Off☐ Well Integrity☐ Other

13. Describe Proposed or Completed Operation (clearly state all pertinent details, including estimated starting date of any proposed work and approximate duration thereof. If the proposal is to deepen directionally or recompleate horizontally, give subsurface locations and measured and true vertical depths of all pertinent markers and zones. Attach the Bond under which the work will be performed or provide the Bond No. on file with BLM/BIA. Required subsequent reports shall be filed within 30 days following completion of the involved operations. If the operation results in a multiple completion or recompleation in a new interval, a Form 3160-4 shall be filed once testing has been completed. Final Abandonment Notices shall be filed only after all requirements, including reclamation, have been completed, and the operator has determined that the final site is ready for final inspection.)

XTO Energy Inc. proposes to recompleate this well to the Basin Coal reservoir per attached documents.

Application to downhole commingle will be required.
No order 10-25-04

CONDITIONS OF APPROVAL
Adhere to previously issued stipulations.2004 OCT 7 PM 3 49
RECEIVED
OTO FARMINGTON NM14. I hereby certify that the foregoing is true and correct
Name (Printed/Typed)

HOLLY C. PERKINS

Title

REGULATORY COMPLIANCE TECH

Date 10/6/04

THIS SPACE FOR FEDERAL OR STATE OFFICE USE

Approved by

Title

Date

Conditions of approval, if any, are attached. Approval of this notice does not warrant or certify that the applicant holds legal or equitable title to those rights in the subject lease which would entitle the applicant to conduct operations thereon.

Office

NMOCD

**PAN AMERICAN FEDERAL GAS COM B #3
FRUITLAND COAL RECOMPLETION PROCEDURE
SEC 31, T 30 N, R 11 W
SAN JUAN CO., NM**

AFF# / Acct #: 401101 / 68744 (FC) & 69940 (PC)
Prod Csg: 4-1/2", 10.5#, J-55 csg @ 2,381'. Circ cmt to surf.
Short Jts: 1,356' - 1,360' & 1,908' - 1,916'
Tbg: 2-3/8" x 25' OPMA w/top 4' slotted, SN & 65 jts 2-3/8", 4.7#, J-55, EUE, 8rd
tbg. EOT @ 2,138'. SN @ 2,112'.
Rods & pmp: 6' x 3/4" GAC, 2"x 1-1/2" x 10' RWAC pmp, 83 - 3/4" gr "C" rods, 3 - 3/4" rod
subs (8', 6' & 4') & 1-1/4" x 16' PR w/1-1/2" x 8' liner.
PC Perfs: 2,080'- 2,090'

NOTE: All completion fluids must be circulated into flowback tnk and hauled to disposal. No completion fluids maybe ppd to an earthen pit.

1. Obtain all necessary regulatory approvals to OAP in the Fruitland Coal.
2. Locate and test rig anchors. Install rig anchors if required.
3. MI and set 14 - 400 bbl frac tanks and 1 flow back tank. Fill frac tanks with fresh water. **NOTE:** Have Halliburton run preliminary fluid quality tests per attached APEX requirements. Confirm wtr temp is OK w/Halliburton. If needed heat wtr so that wtr temp is $\pm 80^{\circ}$ F @ frac time.
4. MIRU PU. Unhang rods & unseat pmp. TOH & LD rods and pump.
5. ND WH. NU BOP. Tag fill w/tubing. TOH & LD tubing.
6. MIRU WL truck. RIH & set CIBP @ 2,070' (new PBTB).
7. ND BOP. Install 5K psig frac vlv. PT csg, CIBP & frac vlv to 3,800 psig (max frac press, 80% of internal csg yield).
8. Perforate Lower FC with 3-1/8" HSC casing gun loaded w/Owens HSC-3125-369 charges (15 gm, 0.49" EHD, 12.48" pene.) or equiv EHD/pene charges 3 JSPF 120° phasing fr/2,028' - 2,043' & 2,019' - 2,022' (ttl 54 - 0.49" holes). Correlate depth w/Computalog GR/CCL log dated 08/24/01. RDMO WL truck.
9. SWI. RDMO PU. WO frac schedule.
10. MIRU WL & mast trks.
11. MIRU Halliburton frac services.

PAN AMERICAN FEDERAL GAS COM B #3
FRUITLAND COAL RECOMPLETION PROCEDURE
SEC 31, T 30 N, R 11 W
SAN JUAN CO., NM

12. Frac Lower FC perms fr/2,019' – 2,043' dwn csg at 40 BPM with 500 gals 15% HCl acid, 5,000 gals 20# linear gel, 92,000 gals 20# Delta 140 frac fluid (20# gelled, borate XL fresh wtr + additives) carrying 99,500 lbs 20/40 Brady sd & 43,000 lbs 16/30 Brady sd (all sd to be coated w/Sandwedge). Flush w/1,300 gals slick wtr. Est TP 2,600 psig. Max TP 3,800 psig. Record ISIP, 5 min, 10 min & 15 min SIP's. Pump frac as follows:

Stage (#)		Surface Clean Volume (gal)	Surface Slurry Rate (bpm)	Proppant Conc. (ppg)	Proppant Type	Fluid Type
1		500	5			20# linear gel
2		0	0			Shut-in/closure
3		500	5			15% HCL acid
4		4,500	40			20# linear gel
5		0	0			Shut-in/step rate
6		8,000	40			20# XL Borate
7		1,000	40	0.25	20/40 sand	20# XL Borate
8		4,000	40			20# XL Borate
9		1,000	40	0.25	20/40 sand	20# XL Borate
10		1,000	40	0.5	20/40 sand	20# XL Borate
11		4,000	40			20# XL Borate
12		1,000	40	0.5	20/40 sand	20# XL Borate
13		1,000	40	1.0	20/40 sand	20# XL Borate
14		6,000	40			20# XL Borate
15		7,000	40	0.5	20/40 sand	20# XL Borate
16		8,000	40	1.0	20/40 sand	20# XL Borate
17		9,000	40	1.5	20/40 sand	20# XL Borate
18		12,000	40	2.0	20/40 sand	20# XL Borate
19		12,000	40	2.5	20/40 sand	20# XL Borate
20		6,000	40	3.0	20/40 sand	20# XL Borate
21		4,000	40	3.0	16/30 sand	20# XL Borate
22		4,000	40	4.0	16/30 sand	20# XL Borate
23		3,000	40	5.0	16/30 sand	20# XL Borate
24		1,300	40			Slickwater

13. SWI & wait 1 hour.

14. RU WL. Set 4-1/2" 8 - 10K psig CIBP @ 2,000'. Load csg with 2% KCl water. PT csg, frac vlv & CIBP to 3,800 psig. Rel press.

**PAN AMERICAN FEDERAL GAS COM B #3
FRUITLAND COAL RECOMPLETION PROCEDURE
SEC 31, T 30 N, R 11 W
SAN JUAN CO., NM**

15. Perf Upper FC with 3-1/8" HSC csg gun loaded w/Owens HSC-3125-369 charges (15 gm, 0.49" EHD, 12.48" pene.) or equiv EHD/pene charges 3 JSPF 120° phasing from 1,838' – 1,842', 1,920' – 1,922', 1,924' – 1,926' & 1,961' – 1,969' (ttl 48 – 0.49" holes).
16. Dump bail ±15 gals 28% HCl ac @ 1,965'. RDMO WL trk.
17. Frac Upper FC perfs from 1,838' - 1,969' down casing at 40 BPM with 750 gals 15% HCl acid, 3,200 gals 20# linear gel, 63,000 Delta 140 frac fluid (20# gelled, borate XL fresh wtr + additives) carrying 63,000 lbs 20/40 Brady sd & 27,000 lbs 16/30 Brady sd (all sd to be coated w/Sandwedge). Flush w/1,125 gals slick wtr. Est TP 2,600 psig. Max TP 3,800 psig. Record ISIP, 5 min, 10 min & 15 min SIP's.. Pump treatment as follows:

Stage (#)	Surface Clean Volume (gal)	Surface Slurry Rate (bpm)	Proppant Conc. (ppg)	Proppant Type	Fluid Type
1	750	5			15% HCL acid
2	200	5 – 10			20# linear gel
3	0	0			Shut-in/closure
4	3,000	40			20# linear gel
5	0	0			Shut-in/step rate
6	7,000	40			20# XL Borate
7	1,000	40	0.5	20/40 sand	20# XL Borate
8	3,000	40			20# XL Borate
9	1,000	40	0.5	20/40 sand	20# XL Borate
10	1,000	40	1.0	20/40 sand	20# XL Borate
11	3,000	40			20# XL Borate
12	1,000	40	1.0	20/40 sand	20# XL Borate
13	1,000	40	1.5	20/40 sand	20# XL Borate
14	5,000	40			20# XL Borate
15	5,000	40	0.5	20/40 sand	20# XL Borate
16	5,000	40	1.0	20/40 sand	20# XL Borate
17	5,000	40	1.5	20/40 sand	20# XL Borate
18	7,000	40	2.0	20/40 sand	20# XL Borate
19	7,000	40	2.5	20/40 sand	20# XL Borate
20	4,000	40	3.0	20/40 sand	20# XL Borate
21	3,000	40	3.0	16/30 sand	20# XL Borate
22	2,000	40	4.0	16/30 sand	20# XL Borate
23	2,000	40	5.0	16/30 sand	20# XL Borate
24	1,125	20			Slickwater

18. SWI. RDMO frac equip.
19. OWU & flow casing on choke to flowback tank. Start with 3/16" or 1/4" ck. If sand production is minimal increase ck size. Flow well until dead.

PAN AMERICAN FEDERAL GAS COM B #3
FRUITLAND COAL RECOMPLETION PROCEDURE
SEC 31, T 30 N, R 11 W
SAN JUAN CO., NM

20. MIRU PU. Remove frac vlv. NU BOP.
21. MI 2,100' 2-3/8", 4.7#, J-55, EUE, 8rd tbg & 4 – 3-1/8" DC's.
22. TIH w/bit, DC's & 2-3/8" tbg. CO frac sd fill to CIBP @ 2,000'. DO CIBP @ 2,000'. CO frac sd fill to 2,070' PBTB (CIBP). If unable to circ then use pmp bailer or N2. **Cannot use AFU w/Sandwedge.**
23. TOH & LD DC's & bit.
24. TIH w/NC, SN & 2-3/8" to ±2,040'. Swab well until frac sd cleans up enough to pump.
25. TIH & tag fill.
26. CO fill to PBTB.
27. TOH & LD excess tbg.
28. TIH w/2-3/8" x 20' OPMA, 2-3/8" Cavins desander (Model D2302G), 2-3/8" x 2' tbg sub, 2-3/8" SN, & 2-3/8" 4.7#, J-55, EUE, 8rd tbg. Space out w/tbg subs as needed. Land SN @ 2,000'. EOT @ ±2,045'.
29. ND BOP. NU WH.
30. TIH w/12" x 1" strainer nipple, 2" x 1-1/2" x 10' RWBC pmp, RHBO tool, spiral rod guide, lift sub, 3/4" Grade "D" rods & 1-1/4" PR w/1-1/2" liner. NU ppg tee. Load & PT tbg to 500 psig. LS pmp to chk PA. SO & HWO.
31. Record SITP & SICP for FC IP tst.
32. Start well ppg @ 7 x 53" SPM (current hole & speed).
33. RWTP.

DISTRICT I
P.O. Box 1980, Hobbs, N.M. 88241-1980

DISTRICT II
P.O. Drawer DD, Artesia, N.M. 88211-0719

DISTRICT III
1000 Rio Brazos Rd., Aztec, N.M. 87410

DISTRICT IV
PO Box 2088, Santa Fe, NM 87504-2088

State of New Mexico
Energy, Minerals & Natural Resources Department

OIL CONSERVATION DIVISION

P.O. Box 2088
Santa Fe, NM 87504-2088

Form C-102
Revised February 21, 1994

Instructions on back
Submit to Appropriate District Office
State Lease - 4 Copies
Fee Lease - 3 Copies

☐ AMENDED REPORT

WELL LOCATION AND ACREAGE DEDICATION PLAT

¹ API Number 30-045-30710		² Pool Code 71629		BASIN FRUITLAND COAL	
⁴ Property Code		PAN AM FED. GAS COM B		⁶ Well Number 3	
⁷ OGRID No. 167067		⁸ Operator Name XTO ENERGY INC		⁹ Elevation 5870'	

¹⁰ Surface Location

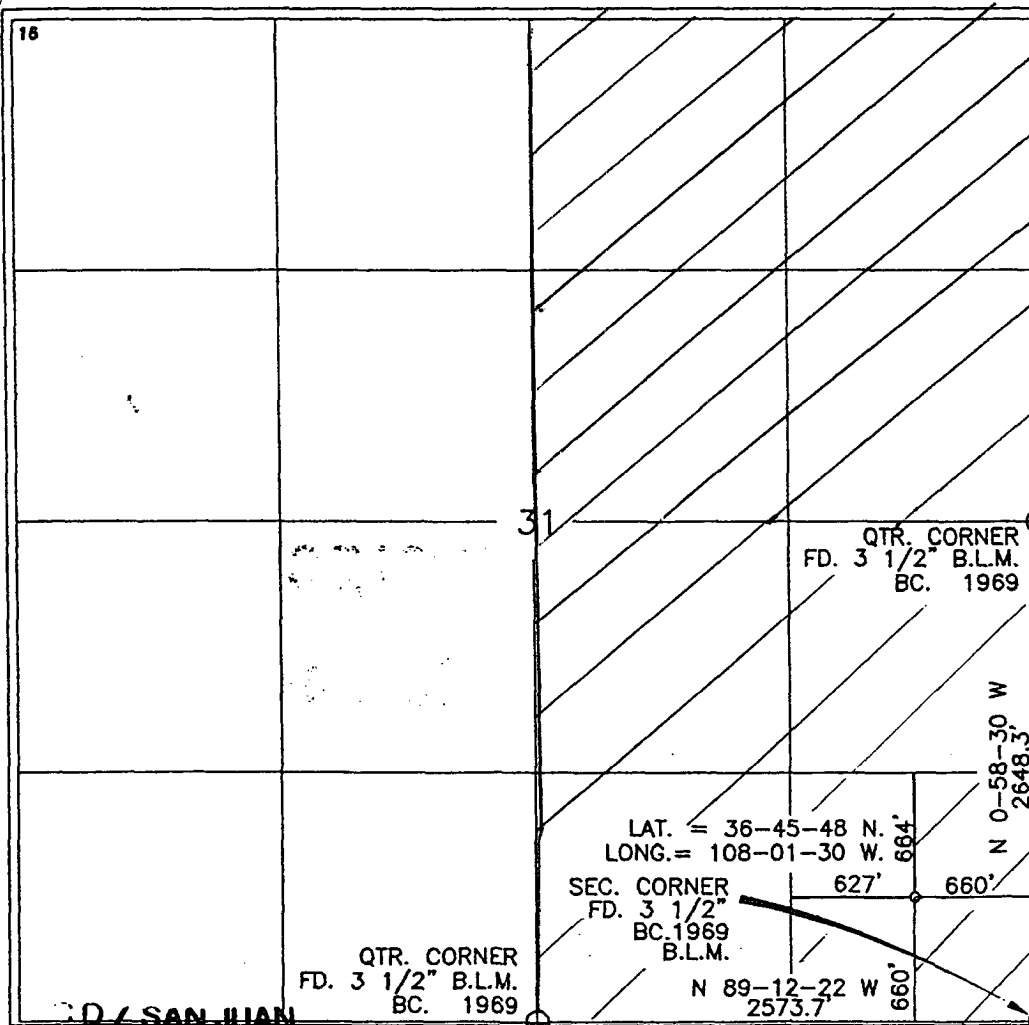
UL or lot no.	Section	Township	Range	Lot Idn	Feet from the	North/South line	Feet from the	East/West line	County
P	31	30-N	11-W		660	SOUTH	660	EAST	SAN JUAN

¹¹ Bottom Hole Location If Different From Surface

UL or lot no.	Section	Township	Range	Lot Idn	Feet from the	North/South line	Feet from the	East/West line	County

¹² Dedicated Acres E 309.48	¹³ Joint or Infill	¹⁴ Consolidation Code	¹⁵ Order No.
---	-------------------------------	----------------------------------	-------------------------

NO ALLOWABLE WILL BE ASSIGNED TO THIS COMPLETION UNTIL ALL INTERESTS HAVE BEEN CONSOLIDATED OR A NON-STANDARD UNIT HAS BEEN APPROVED BY THE DIVISION



17 OPERATOR CERTIFICATION

I hereby certify that the information contained herein is true and complete to the best of my knowledge and belief

Signature: Holly C. Perkins
Printed Name: Holly C. Perkins
Title: Regulatory Compliance Tech
Date: 10-6-04

18 SURVEYOR CERTIFICATION

I hereby certify that the well location shown on this plat was plotted from field notes of actual surveys made by me or under my supervision, and that the same is true and correct to the best of my belief.

Date of Survey: 3-28-04
Signature and Seal of Professional Surveyor: [Signature]
Certificate Number: 8894

APR 4 2001