

District I
PO Box 1980, Hobbs, NM 88241-1980

District II
PO Drawer 00, Artesia, NM 88211-0719

District III
1000 Rio Brazos Rd., Aztec, NM 87410

District IV
PO Box 2088, Santa Fe, NM 87504-2088

State of New Mexico
Energy, Minerals & Natural Resources Department

OIL CONSERVATION DIVISION
PO Box 2088
Santa Fe, NM 87504-2088

Form C-102

Revised February 21, 1994

Instructions on back
Submit to Appropriate District Office
State Lease - 4 Copies
Fee Lease - 3 Copies

☐ AMENDED REPORT

WELL LOCATION AND ACREAGE DEDICATION PLAT

*API Number 30-045-32600		*Pool Code 71599	*Pool Name BASIN DAKOTA
*Property Code	*Property Name WILMERDING 10		*Well Number 02
*OGRID No. 173252	*Operator Name PATINA SAN JUAN, INC.		*Elevation 5730'

10 Surface Location

UL or lot no.	Section	Township	Range	Lot Idn	Feet from the	North/South line	Feet from the	East/West line	County
B	10	31N	13W		815	NORTH	1370	EAST	SAN JUAN

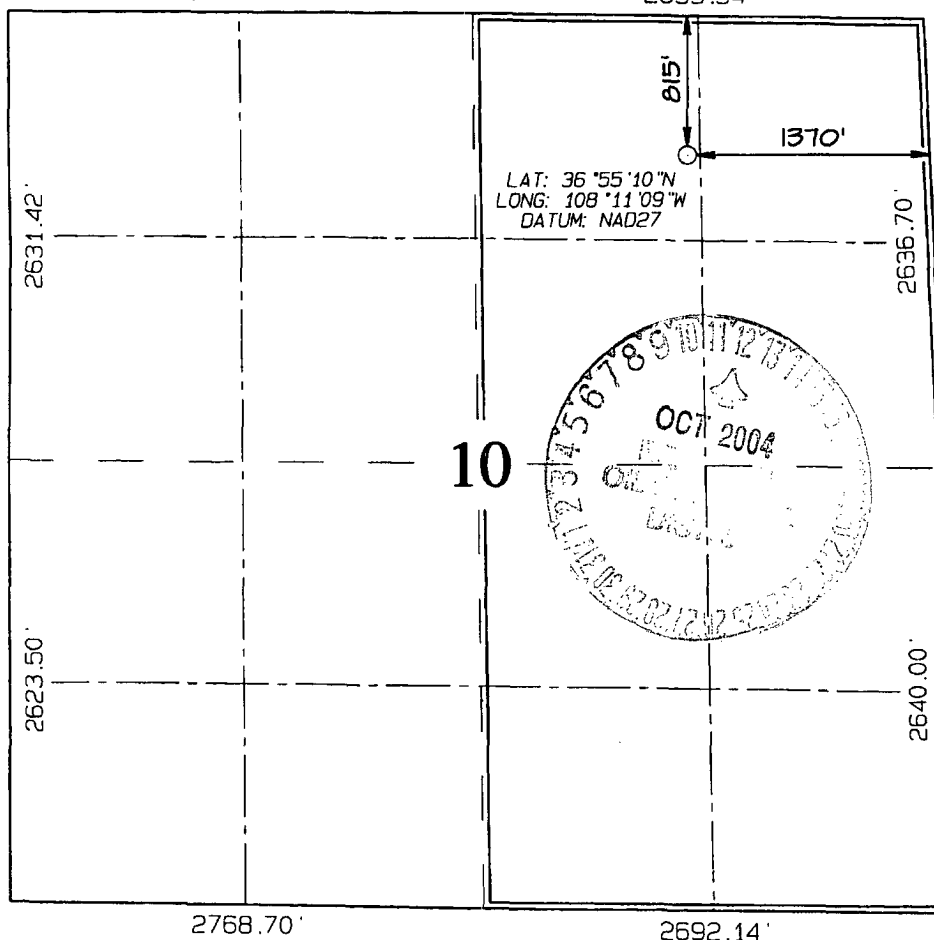
11 Bottom Hole Location If Different From Surface

UL or lot no.	Section	Township	Range	Lot Idn	Feet from the	North/South line	Feet from the	East/West line	County
12 Dedicated Acres 320.0 Acres - (E/2)				13 Joint or Infill		14 Consolidation Code		15 Order No.	

NO ALLOWABLE WILL BE ASSIGNED TO THIS COMPLETION UNTIL ALL INTERESTS HAVE BEEN CONSOLIDATED
OR A NON-STANDARD UNIT HAS BEEN APPROVED BY THE DIVISION

2702.04'

2639.34'



17 OPERATOR CERTIFICATION

I hereby certify that the information
contained herein is true and complete
to the best of my knowledge and belief

Runeil A. Seale

Signature

Runeil A. Seale

Printed Name

Agent

Title

9-30-04

Date

18 SURVEYOR CERTIFICATION

I hereby certify that the well location
shown on this plat was plotted from field
notes of actual surveys made by me or under
my supervision, and that the same is true
and correct to the best of my belief.

Survey Date: SEPTEMBER 24, 2004

Signature and Seal of Professional Surveyor



JASON C. EDWARDS

Certificate Number

15269