

UNITED STATES
DEPARTMENT OF THE INTERIOR
BUREAU OF LAND MANAGEMENT

APPLICATION FOR PERMIT TO DRILL, DEEPEN, OR PLUG BACK

RECEIVED

2004 MAR 24 PM 12:18
Farmington, NM

1a. Type of Work
DRILL

5. Lease Number
NMSF-0807123
Unit Reporting Number
NMM 784208

1b. Type of Well
GAS

6. If Indian, All. or Tribe

2. Operator
BURLINGTON

RESOURCES OIL & GAS COMPANY LP

7. Unit Agreement Name

San Juan 30-6 Unit

3. Address & Phone No. of Operator

PO Box 4289, Farmington, NM 87499

8. Farm or Lease Name

San Juan 30-6 Unit

(505) 326-9700

9. Well Number

476S

4. Location of Well

1825' FSL, 1620' FEL

10. Field, Pool, Wildcat

Basin Fruitland Coal

Latitude 36° 46.53, Longitude 107° 27.51

11. Sec., Twn, Rge, Mer. (NMPM)

Sec. 28, T-30-N, R-6-W

API # 30-039-

27685

14. Distance in Miles from Nearest Town

11 miles from Gobernador

12. County

Rio Arriba

13. State

NM

15. Distance from Proposed Location to Nearest Property or Lease Line

1620'

16. Acres in Lease

17. Acres Assigned to Well

320. E/2

20

18. Distance from Proposed Location to Nearest Well, Drig, Compl, or Applied for on this Lease

20'

19. Proposed Depth

3399'

20. Rotary or Cable Tools

Rotary

21. Elevations (DF, FT, GR, Etc.)

6382' GR

22. Approx. Date Work will Start

23. Proposed Casing and Cementing Program

See Operations Plan attached

24. Authorized by:

Nancy Ottomano
Senior Staff Specialist

12-30-03
Date

PERMIT NO.

APPROVAL DATE

APPROVED BY

[Signature]

TITLE

AFM

DATE

9/20-84

Archaeological Report attached

Threatened and Endangered Species Report attached

NOTE: This format is issued in lieu of U.S. BLM Form 3160-3

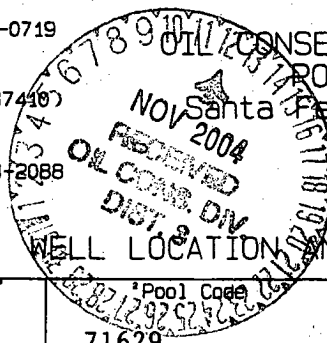
Title 18 U.S.C. Section 1001, makes it a crime for any person knowingly and willfully to make to any department or agency of the United States any false, fictitious or fraudulent statements or presentations as to any matter within its jurisdiction.

No HPA notification required under R-8768-F

District II
PO Drawer DD, Artesia, NM 88211-0719

District III
1000 Rio Brazos Rd., Aztec, NM 87410

District IV
PO Box 2088, Santa Fe, NM 87504-2088



204 MAR 24 PM 12:18

AMENDED REPORT

WELL LOCATION AND ACREAGE DEDICATION PLAT

API Number 30-039-2768		Pool Code 71629	Pool Name Basin Fruitland Coal
Property Code 7469	Property Name SAN JUAN 30-6 UNIT		Well Number 476S
GRID No. 14538	Operator Name BURLINGTON RESOURCES OIL & GAS COMPANY, LP		Elevation 6382'

10 Surface Location

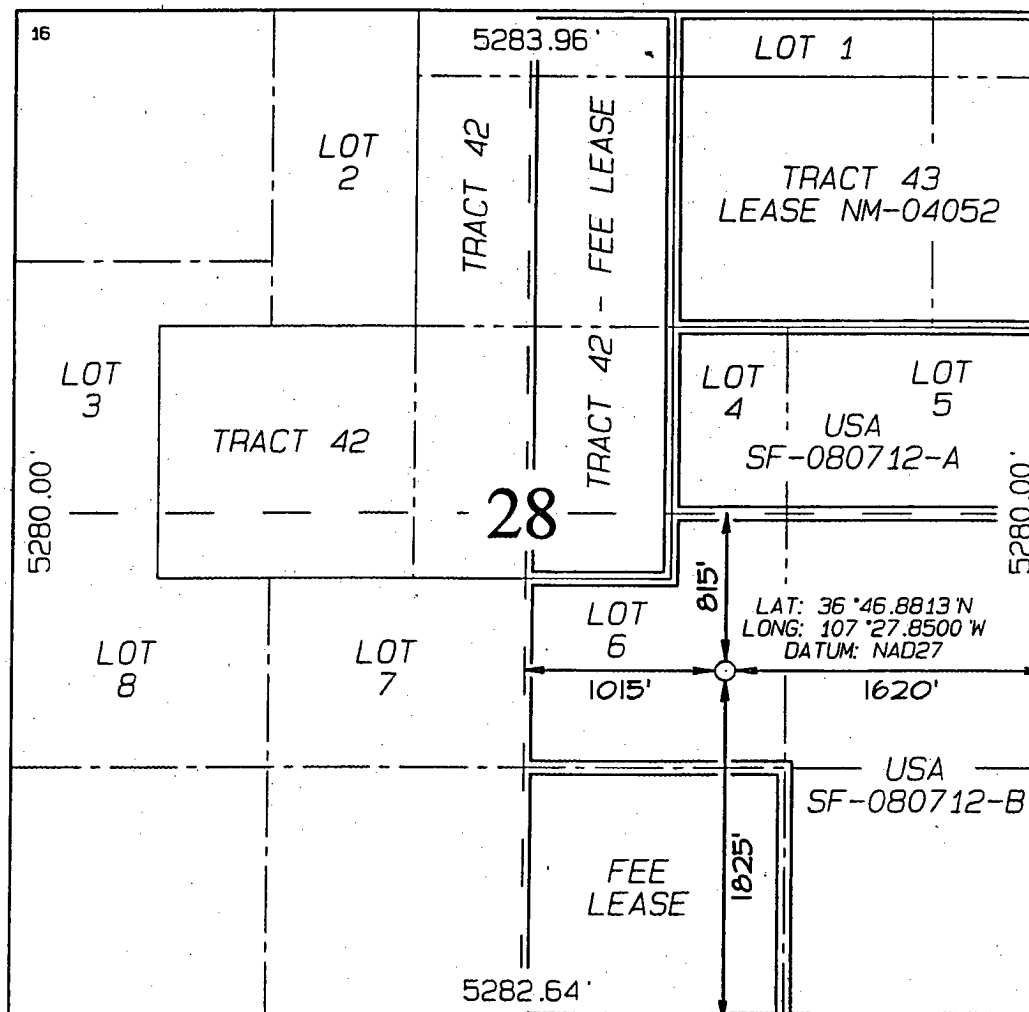
UL or lot no.	Section	Township	Range	Lot Idn	Feet from the	North/South line	Feet from the	East/West line	County
J	28	30N	6W		1825	SOUTH	1620	EAST	RIO ARriba

11 Bottom Hole Location If Different From Surface

UL or lot no.	Section	Township	Range	Lot Idn	Feet from the	North/South line	Feet from the	East/West line	County

Dedicated Acres PTC E/320.20	Joint or Infill	Consolidation Code	Order No.
---------------------------------	-----------------	--------------------	-----------

NO ALLOWABLE WILL BE ASSIGNED TO THIS COMPLETION UNTIL ALL INTERESTS HAVE BEEN CONSOLIDATED OR A NON-STANDARD UNIT HAS BEEN APPROVED BY THE DIVISION



17 OPERATOR CERTIFICATION

I hereby certify that the information contained herein is true and complete to the best of my knowledge and belief

Nancy Oltmanns
Signature

Nancy Oltmanns
Printed Name

Senior Staff Specialist
Title

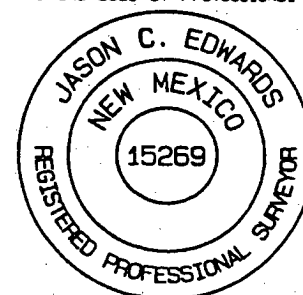
12-30-03
Date

18 SURVEYOR CERTIFICATION

I hereby certify that the well location shown on this plat was plotted from field notes of actual surveys made by me or under my supervision, and that the same is true and correct to the best of my belief.

Date of Survey: OCTOBER 9, 2003

Signature and Seal of Professional Surveyor



JASON C. EDWARDS
Certificate Number 15269

OPERATIONS PLAN

Well Name: San Juan 30-6 Unit #476S
Location: 1825' FSL, 1620' FEL, Section 28, T-30-N, R-6-W
Latitude 36° 46.53, Longitude 107° 27.51
Rio Arriba County, NM
Formation: Basin Fruitland Coal
Elevation: 6382' GR

Formation:	Top	Bottom	Contents
Surface	San Jose	2444'	
Ojo Alamo	2444'	2558'	aquifer
Kirtland	2558'	2860'	gas
Fruitland	2860'	3129'	gas
Intermediate casing	3079'		
Top of Coal	3129'	3314'	
Base of Coal	3314'		
Pictured Cliffs	3319'		
Total Depth	3399'		

Logging Program:
Open hole - None
Mud log - TD to 3079'

Coring Program: none

Mud Program:	Interval	Type	Weight	Vis.	Fluid Loss
	0-120'	Spud/Air/Air Mist	8.4-9.0	40-50	no control
	120-3079'	Non-dispersed	8.4-9.0	30-60	no control
	3079-3399'	Air/Mist			no control

Casing Program (as listed, the equivalent, or better):

Hole Size	Depth Interval	Csg. Size	Wt.	Grade
12 1/4"	0' - 120'	9 5/8"	32.3#	H-40
8 3/4"	0' - 3079'	7"	20.0#	J-55
6 1/4"	3079' - 3399'	open hole		

Alternate Casing Program (as listed, the equivalent, or better):

Hole Size	Depth Interval	Csg. Size	Wt.	Grade
12 1/4"	0' - 120'	9 5/8"	32.3#	H-40
8 3/4"	0' - 3079'	7"	20.0#	J-55
6 1/4"	3039' - 3399'	5 1/2"	15.5#	J-55

Tubing Program:

0' - 3399'	2 3/8"	4.7#	J-55
------------	--------	------	------

Float Equipment: 9 5/8" surface casing - saw tooth guide shoe. Centralizers will be run in accordance with Onshore Order #2.

7" intermediate casing - guide shoe and self-fill float collar. Standard centralizers run every other joint above shoe. Two turbolizing type centralizers - one below and one into the base of the Ojo Alamo @ 2558'. Standard centralizers thereafter every fourth joint up to the base of the surface pipe.

Wellhead Equipment: 9 5/8" x 7" x 2 3/8" x 11" 2000 psi xmas tree assembly.

Cementing:

9 5/8" surface casing -

Pre-Set Drilled Cement with 23 sx Type I, II cement with 20% flyash mixed at 14.5 ppg, 1.61 cu ft per sack yield. (37 cu ft of slurry, bring cement to surface) Wait on cement for 24 hours for pre-set holes before pressure testing or drilling out from under surface.

Conventionally Drilled:

Cement with 88 sx Type III cement with 0.25 pps Celloflake, 3% CaCl. (113 cu ft of slurry, 200% excess, bring cement to surface) Wait on cement for 8 hrs for conventionally set holes before pressure tessting or drilling out from under surface.

Wait on cement until cement establishes 250 psi compressive strength prior to nipple up of BOP.

7" intermediate casing - lead w/267 sacks Premium Lite cement with 3% calcium chloride, 0.25 pps Celloflake, 5 pps LCM-1, 0.4% fluid loss, 0.4% sodium metasilicate. Tail with 90 sacks Type III cement with 1% calcium chloride, 0.25 pps Celloflake, 0.2% fluid loss (694 cu.ft., 50% excess to circulate to surface).

5 1/2" liner - will not be cemented if run.

Note: If open hole logs are run, cement volumes will be based on 25% excess over caliper volumes.

BOP and tests:

Surface to intermediate TD - 11" 2000 psi (minimum) double gate BOP stack (Reference Figure #1). Prior to drilling out surface casing, test BOP and casing to 600 psi/30 min.

Intermediate TD to Total Depth - 7 1/6" 2000 psi (minimum) double gate BOP stack (Reference Figure #2). Prior to drilling out intermediate casing, test BOP and casing to 1500 psi for 30 minutes; all pipe rams and casing to 1500 psi for 30 minutes each.

From surface to ^{7"}TD - choke manifold (Reference Figure #3).

Pipe rams will be actuated at least once each day and blind rams actuated once each trip to test proper functioning. An upper kelly cock valve with handle and drill string safety valves to fit each drill string will be maintained and available on the rig floor.

Additional information:

- The Fruitland Coal formation will be completed.
- Anticipated pore pressure for the Fruitland is 500 psi.
- This gas is dedicated.
- The East half of Section 28 is dedicated to this well.

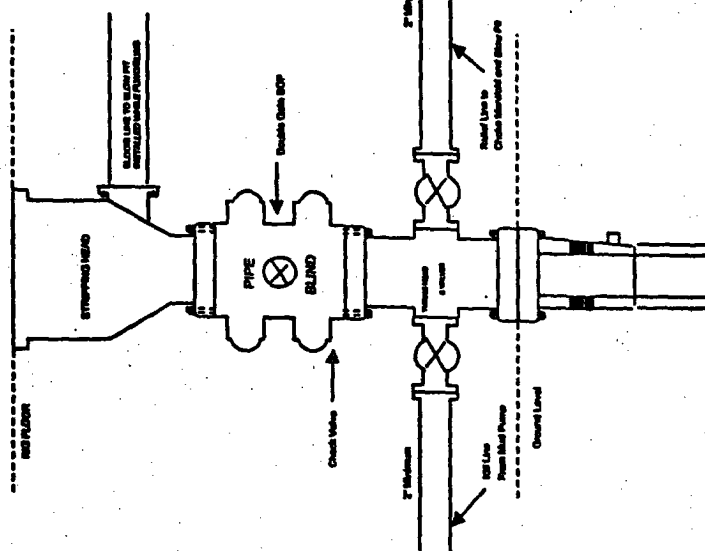
Drilling Engineer:

James M. McCarthy

Date: FEBRUARY 11, 2004

BURLINGTON RESOURCES

Completion/Workover Rig
BOP Configuration
2,000 psi System

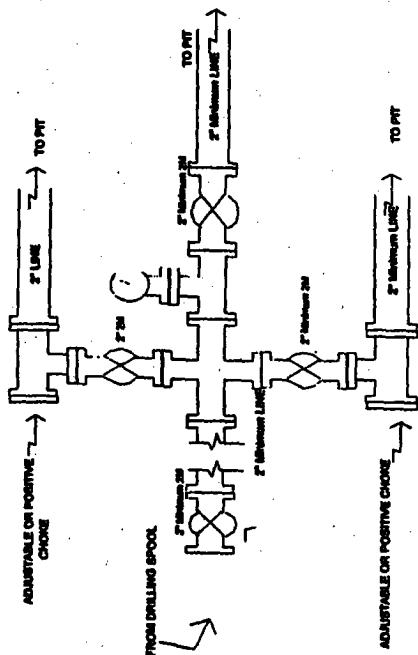


Minimum BOP installation for all Completion/Workover Operations. 7-1/16" bore, 2000 psi minimum working pressure double gate BOP to be equipped with blind and pipe rams. A stripping head to be installed on the top of the BOP. All BOP equipment to be 2000 psi working pressure or greater excluding 500 psi stripping head.

Figure #2

BURLINGTON RESOURCES

Drilling Rig
Choke Manifold Configuration
2000 psi System



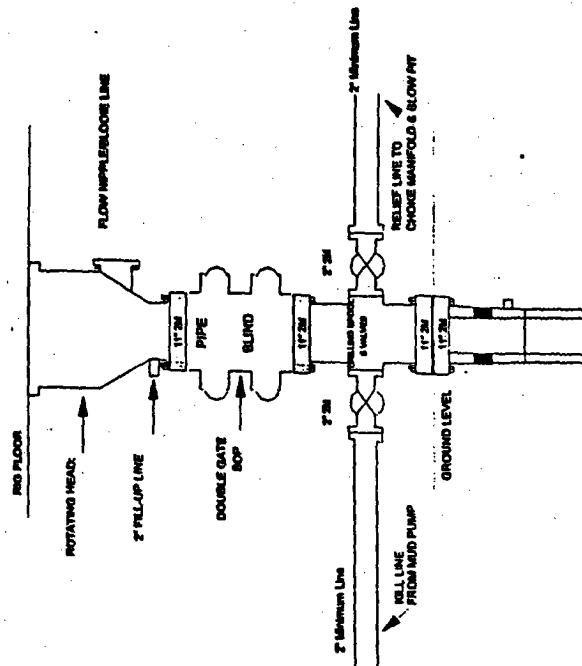
Choke manifold installation from Surface Casing Point to Total Depth. 2,000psi working pressure equipment with two chokes.

Figure #3

4-20-01

Burlington Resources

Drilling Rig
2000 psi System



BOP Installation from Surface Casing Point to Total Depth. 4 1/2" Bore 10" Nominal, 2000 psi working pressure double gate BOP to be equipped with blind rams and pipe rams. All BOP equipment to be 2000 psi working pressure or greater excluding 500 psi stripping head on top of ram preventers. All BOP equipment to be 2,000 psi working pressure.

Figure #1

4-20-01

UNITED STATES
DEPARTMENT OF THE INTERIOR
BUREAU OF LAND MANAGEMENT

RECEIVED

Sundry Notices and Reports on Wells

2004 APR 27 PM 3:36

1. Type of Well
GAS

070 FARMINGTON, NM

Lease Number

NMSF-080712-B

If Indian, All. or
Tribe Name

2. Name of Operator

BURLINGTON
RESOURCES

OIL & GAS COMPANY

3. Address & Phone No. of Operator

PO Box 4289, Farmington, NM 87499 (505) 326-9700

4. Location of Well, Footage, Sec., T, R, M

1825' FSL, 1620' FEL, Sec. 28, T30N, R6W, NMPM

7. Unit Agreement Name

Well Name & Number

San Juan 30-6 Unit #476S

API Well No.

30-039-27685

10. Field and Pool

Basin Fruitland Coal

11. County and State

Rio Arriba Co, NM

12. CHECK APPROPRIATE BOX TO INDICATE NATURE OF NOTICE, REPORT, OTHER DATA

Type of Submission

☒ Notice of Intent☐ Subsequent Report☐ Final Abandonment

Type of Action

☐ Abandonment☐ Recompletion☐ Plugging Back☐ Casing Repair☐ Altering Casing☐ Other☒ Change of Plans☐ New Construction☐ Non-Routine Fracturing☐ Water Shut off☐ Conversion to Injection

13. Describe Proposed or Completed Operations

The BOP configuration has been revised for the subject well according to the following and attached diagram:

BOP and tests:

Surface to intermediate TD - 11" 2000 psi (minimum) double gate BOP stack (Reference Figure #1). Prior to drilling out surface casing, test BOPE to 600 psi for 30 min.

Intermediate TD to Total Depth - 7 1/6" 2000 psi (minimum) completion BOP stack (Reference Figure #2). Prior to drilling out intermediate casing, test BOPE and casing to 1500 psi for 30 minutes.

From surface to 7" TD - a choke manifold will be installed in accordance with Onshore Order NO. 2 (Reference Figure #3). When the cavitation completion rig drills the production hole, the completion rig configuration will be used (Reference Figure #4).

Pipe rams will be actuated at least once each day and blind rams actuated once each trip to test proper functioning. An upper kelly cock valve with handle and drill string safety valves to fit each drill string will be maintained and available on the rig floor.

14. I hereby certify that the foregoing is true and correct.

Signed Nancy Altman Title Regulatory Specialist Date 04/013/04

(This space for Federal or State Office use)

APPROVED BY [Signature] Title AFM Date 9/29/04

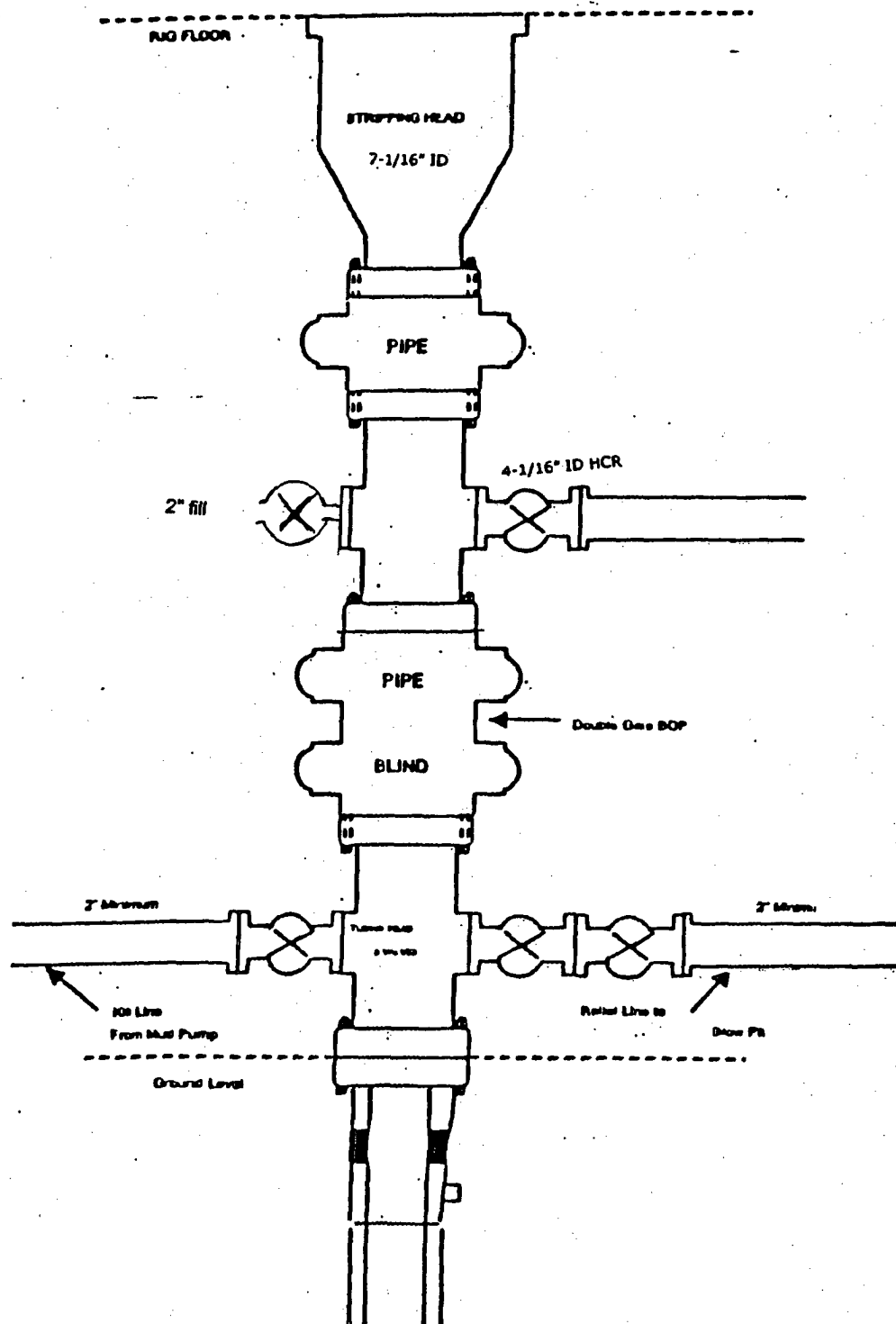
CONDITION OF APPROVAL, if any:

Title 18 U.S.C. Section 1001 makes it a crime for any person knowingly and willfully to make to any department or agency of the United States any false, fictitious or fraudulent statements or representations as to any matter within its jurisdiction.

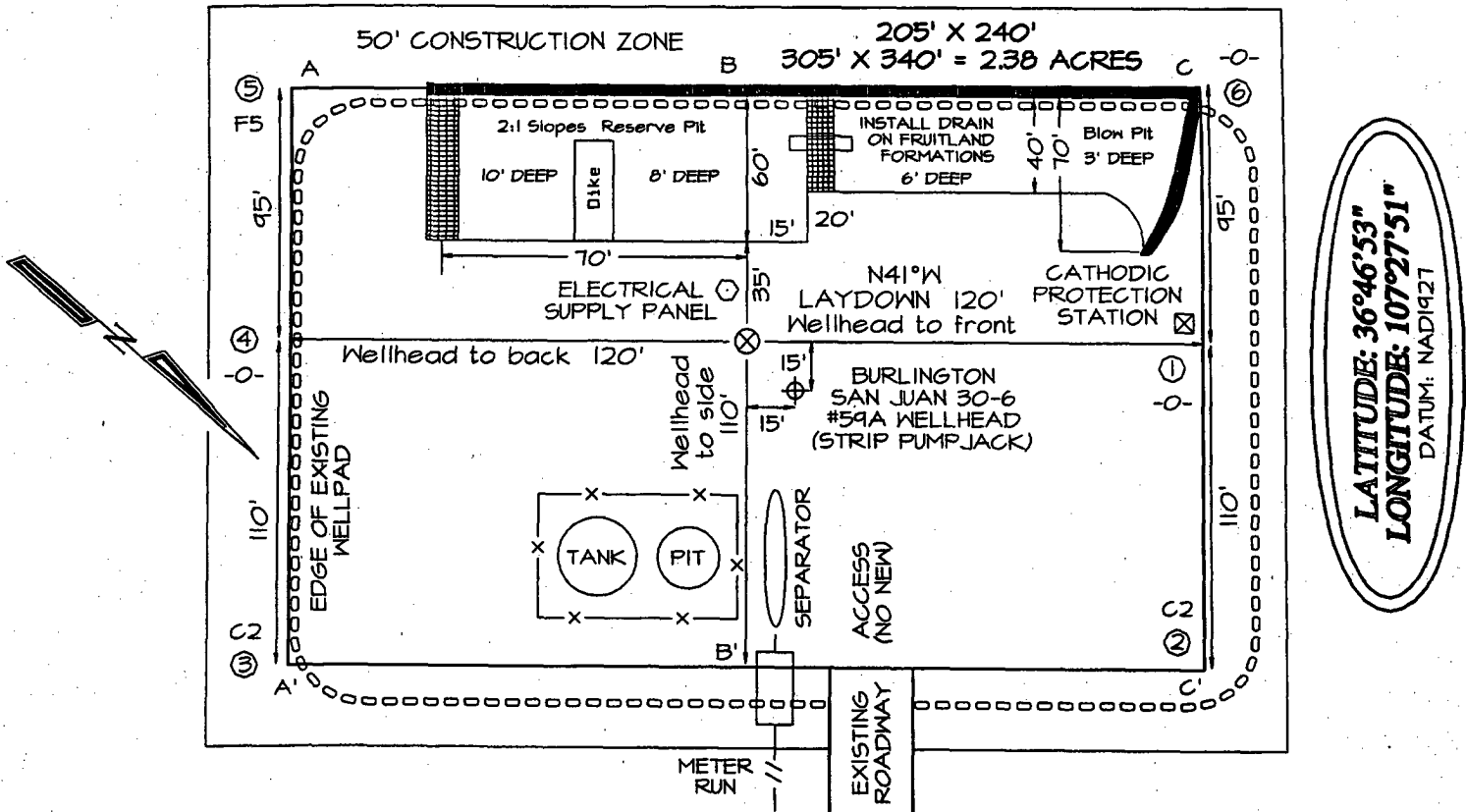
OPERATOR

BURLINGTON RESOURCES

Figure #4
Cavitation Rig
BOP Configuration
2,000 psi Minimum System




SAN JUAN SO-0 UNIT #4703, 1625 FSL & 1620 TEL
SECTION 28, T30N, R6W, NMPM, RIO ARriba COUNTY, NM
GROUND ELEVATION: 6382' DATE: OCTOBER 9, 2003



Reserve Pit Dike: to be 8' above Deep side (overflow - 3' wide and 1' above shallow side).
Blow Pit: overflow pipe halfway between top and bottom and to extend over plastic liner and into blow pit.

A-A'						
6392'						
6382'						
6372'						

B-B'						
6392'						
6382'						
6372'						

C-C'						
6392'						
6382'						
6372'						

Note: Contractor should call One-Call for location of any marked or unmarked buried pipelines or cables on well pad and/or access road at least two (2) working days prior to construction