

UNITED STATES  
DEPARTMENT OF THE INTERIOR  
BUREAU OF LAND MANAGEMENT

FORM APPROVED  
OMB No. 1004-0135

Expires: November 30, 2000

**SUNDRY NOTICES AND REPORTS ON WELLS**

Do not use this form for proposals to drill or to re-enter an abandoned well. Use Form 3160-3 (APD) for such proposals.

SUBMIT IN TRIPLICATE - Other Instructions on reverse side

1. Type of Well

☐

Oil Well

☒

Gas Well

☐

Other

2. Name of Operator

Dominion Oklahoma Texas E&P, Inc.

3a. Address

Suite 600

14000 Quail Springs Parkway, OKC, OK 73134

3b. Phone No. (include area code)

(405) 749-5263

4. Location of Well (Footage, Sec., T., R., M., or Survey Description)

790' FNL & 790' FEL, Sec. 27-27N-12W

5. Lease Serial No.

NMSF-079114A

6. If Indian, Allottee or Tribe Name

7. If Unit or CA/Agreement, Name and/or No.

8. Well Name and No.

Campbell Federal 5

9. API Well No.

30-045-06307

10. Field and Pool, or Exploratory Area

Basin

11. County or Parish, State

San Juan

12. CHECK APPROPRIATE BOX(ES) TO INDICATE NATURE OF NOTICE, REPORT OR OTHER DATA

TYPE OF SUBMISSION

☒

Notice of Intent

☐

Subsequent Report

☐

Final Abandonment Notice

TYPE OF ACTION

☐

Acidize

☐

Altering Casing

☐

Casing Repair

☐

Change Plans

☐

Convert to Injection

☐

Deepen

☐

Fracture Treat

☐

New Construction

☐

Plug and Abandon

☐

Plug Back

☐

Production (Start/Resume)

☐

Reclamation

☐

Recomplete

☐

Temporarily Abandon

☐

Water Disposal

☐

Water Shut-Off

☐

Well Integrity

☒

Other

☐

Extension

13 Describe Proposed or Completed Operation (clearly state all pertinent details, including estimated starting date of any proposed work and approximate duration thereof. If the proposal is to deepen directionally or recomplete horizontally, give subsurface locations and measured and true vertical depths of all pertinent markers and zones. Attach the Bond under which the work will be performed or provide the Bond No. on file with BLM/BIA. Required subsequent reports shall be filed within 30 days following completion of the involved operations. If the operation results in a multiple completion or recompletion in a new interval, a Form 3160-4 shall be filed once testing has been completed. Final Abandonment Notices shall be filed only after all requirements, including reclamation, have been completed and the operator has determined that the site is ready for final inspection.)

Please cancel the previous Sundry to P&A the Campbell Federal #5. Dominion intends to recomplete this well, per the attached procedure and schematic within 60 days. We are currently pending working interest notification.

14. I hereby certify that the foregoing is true and correct

Name (Printed/Typed)

Carla Christian

Title

Regulatory Specialist

Signature

Carla Christian

Date

10/22/2004

THIS SPACE FOR FEDERAL OR STATE OFFICIAL USE

Approved by

Original Signed: Stephen Mason

Title

Date

Conditions of approval, if any, are attached. Approval of this notice does not warrant or certify that the applicant holds legal or equitable title to those rights in the subject lease which would entitle the applicant to conduct operations thereon.

Office

Title 18 U.S.C. Section 1001 and Title 43 U.S.C. Section 1212, makes it a crime for any person knowingly and willfully to make to any department or agency of the United States any false, fictitious or fraudulent statements or representations as to any matter within its jurisdiction.

NMOC

# Dominion Exploration & Production, Inc.

## Recompletion Procedure

CAMPBELL FEDERAL NO. 5

790' FNL & 790' FEL

Sec. 27, T-27-N, R-12-W

San Juan County, New Mexico

### Objective:

Recomplete well to the Fruitland Coal and re-establish production.

### Datum:

Elevation: 5,864' GL, 5,875.5' K.B. (11.5' AGL).

192 jts. of 2-7/8" production tubing w/ Arrow packer @ 5,864'.

4-1/2", 10.5# csg. @ 6,044'. Cmt. w/ 300 sx.

TOC @ ~ 4,800' (Calc.).

Existing perfs: 5,948'-5,962' & 5,985'-5,995', Dakota (4 SPF).

TD: 6,044'. PBSD: 6,027'

### Plan of Procedure:

1. Obtain necessary state approval.
2. MIRU workover rig. ND tree. NU & test 5,000# BOP's. POOH standing back 2-7/8" tbg.
3. PU & GIH w/ 3-7/8" bit & csg. scraper for 4-1/2", 10.5# csg. on 2-7/8" tbg. Cleanout wellbore to top perf. @ 5,948'. POOH w/ bit & scraper.
4. Run CIBP on 2-7/8" tbg, set 4-1/2" CIBP @ 5,900', rotate out of CIBP, pull EOT 2' off bottom.
5. RU cementing company equipment, fill hole via tbg. w/ 10 ppg mud (salt gel mud consisting of 10# brine w/ 25# of gel per bbl), press test csg. & CIBP to 200 psi, mix and pump 6 sx cement to spot a 50' cement plug from 5,850' to 5,900', pull setting tool above cement plug, reverse circulate to clean tbg.
6. PUH laying down tbg. to 4,970'. Mix and pump 12 sx. cement to spot a 100' plug (cover top of Gallup) from 4,870' - 4,970'. Displace cmt. w/ 10 ppg mud (as noted above). Pull setting tool above cement plug, reverse circulate to clean tbg. RD cementing co.
7. MIRU wireline unit and lubricator. Run 4-1/2", 10.5# GR/JB/CCL to 1,500'. Run and set 4-1/2" CIBP @ 1,500'. Pressure test 4-1/2" csg. & CIBP to 500#. GIH w/ 3-1/8" csg. gun & perf. 8 squeeze holes @ 1,490'. RD wireline unit.

→ Plug 2897' - 2977' to cover Mesquite top.

→ Chacra plug 2155 - 2155

MKT 10/15/2004

MKT

**Recompletion Procedure Continued**  
**CAMPBELL FEDERAL NO. 5**

8. GIH w/ 2-7/8" prod. tbg. & 4-1/2" cement retainer to 1,480'. Drop standing valve & test tbg. to 500#. Pull standing valve. Set cmt. retainer @ 1,480'. Sting out of retainer, circulate hole w/ 2% KCl, sting in and open retainer.
9. RU cementing company. Pressure up on the csg./tbg. annulus to 500# (monitor and hold). Open bradenhead valve. EIR w/ FW, mix and pump 450 sx. (calc. 150% to circ. to surface @ 1.15 cu.ft./sx). Release annulus pressure. Sting out of cmt. retainer and check for flow. Pull stinger up hole 2 stands and reverse circulate to clean tbg. Pull tbg. up hole 500', pressure up to 500# and shut-in overnight.
10. Note pressure and release. POOH standing back 2-7/8" tbg.
11. RU wireline unit and lubricator. Run 4-1/2", 10.5# GR/JB/CCL to 1,480' (new PBTD). Run CBL/CCI from PBTD to the surface. \* *Correlate depth to Schlumberger electric log dated 8/14/61.* RD wireline unit.
12. RU Hydrostatic tbg. tester. GIH w/ 2-7/8" prod. tbg. & 4-1/2" retrievable treating pkr. Test tbg. in the hole to 5,000# below the slips. RD Hydrostatic tester. Circ. hole clean w/ inhibited 2% KCl water. Set pkr. @ 1,200'. Swab tbg. down to 500'.
13. ND BOP's. NU frac valve. RDMO WOR.
14. RU wireline unit and lubricator. RIH w/ 1-11/16" strip gun (0.32 EH/ 12.14" penetration, 11.5 gram charges) loaded 4 SPF, 0 phased w/ decentralizer. Perf. Fruitland Coal interval from 1,310'-1,320' (10'). \* *Correlate depth to CBL ran earlier.* RD wireline unit.
15. RU Key Pumping Services. Breakdown perfs. Frac the Fruitland Coal as follows:  
  
Spearhead w/ 250 gals. of 7-1/2% HCl acid.  
2,250 gals. of 70Q N2 Foam – Aqua-Safe X20 - Pad.  
6,375 gals. of 70Q N2 Foam – Aqua-Safe X20 - w/ 45,000# 20/40 Brady (0.5 – 4 ppg).  
375 gals. of 70Q N2 Foam – Aqua-Safe X20 - w/ 5,000# 20/40 Santrol Super LC (4 ppg).  
315 gals. of Aqua-Safe L20 – Flush.  
  
RD Key Pumping Services. Flow back well and test.
16. MIRU WOR. ND Frac valve. NU BOP. Unset pkr. & POOH standing back 2-7/8" tbg.
17. GBIH w/ 2-7/8" tbg., S/N & notched collar. Check for fill. Set EOT near top perf. @ 1,310'. ND BOP. NU Tree. Swab well in and place on production. RDMO WOR.

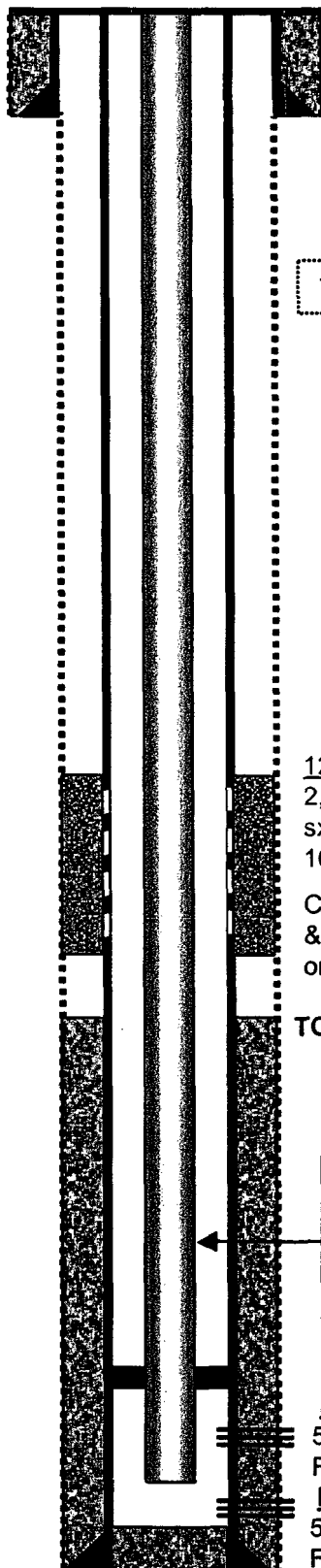
# DOMINION EXPLORATION & PRODUCTION CAMPBELL FEDERAL # 5

SPUD: 08/03/61  
COMPLETED: 08/14/61

SEC: 27, T-27-N, R-12-W, San Juan Co., New Mexico  
API: 30-045-06307

ELEV.: 5,864' GL  
5,875.5' KB

## PRESENT



13-3/4" hole

10-3/4", 32.75# CSA @ 220'.  
Cmt.d w/ 150 sx.  
Circ. to surf.

7-7/8" hole

12/03/74: Isolated csg. leaks  
2,850' - 3,620'. Sqz'd. w/ 400  
sx. Did not hold. Re-sqz'd. w/  
100 sx. Held o.k.

Csg. leaks squeezed in 1967  
& Nov. of 1974 w/ no depths  
or cement volumes given.

TOC calc. @ ~ 4,800'.

Notched collar, 2' sub, 8' sub, 3 jts. 2-7/8" tbg.,  
Arrow pkr. (Watson Model 440, full bore), 189  
jts. 2-7/8", 6.5#, J-55, 8rd., EUE tbg. Pkr. set  
@ 5,864' in 12 M# compr. EOT @ 5,980'  
(Sept. 98).

**Interval # 1 Dakota**  
5,948' - 5,962' (4 SPF).  
Frac w/ 30,000# 20/40.

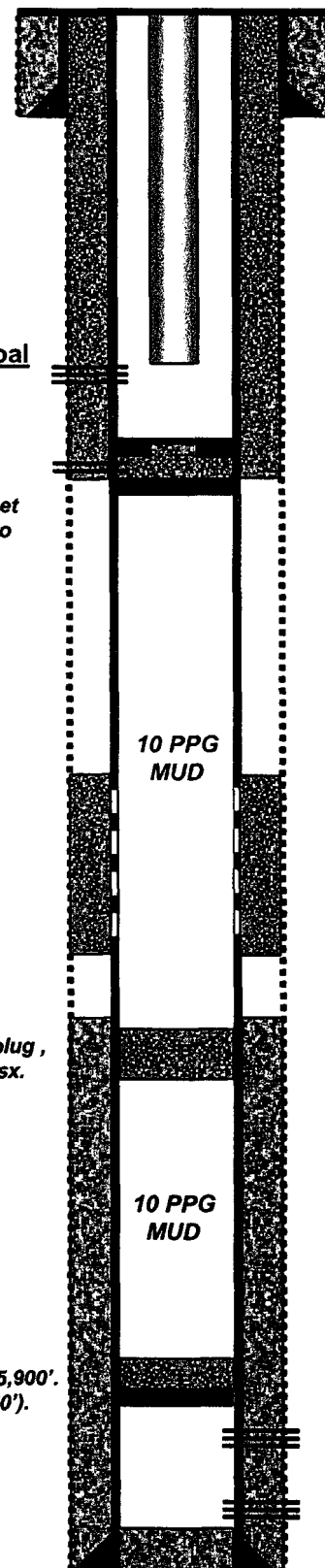
**Interval # 1 Dakota**  
5,985' - 5,995' (4 SPF).  
Frac w/ 20,000# 20/40.

TD: 6,044'  
PBTD: 6,027'

4-1/2", 10.5# CSA 6,044'.  
Cmt. w/ 300 sx.

NOTE: Unless Stated All Depths  
are Measured.  
NOT DRAWN TO SCALE.

## PROPOSED



**Interval # 1 Fruitland Coal**  
1,310' - 1,320' (4 SPF).  
Frac w/ 50,000# 20/40.

**Plug # 3:** Set CIBP @ 1,500'.  
Perf. 8 sqz. holes @ 1,490'. Set  
cmt. retainer @ 1,480'. Cmt. to  
surface w/ 450 sx. (Class C -  
1.15 ft³/sx).

**Plug # 2:** Spot 100' plug,  
4,870' - 4,970' w/ 12 sx.

**Plug # 1:** Set CIBP @ 5,900'.  
Cap w/ 6 sx. cement (50').

10 PPG  
MUD

10 PPG  
MUD