

Submit 3 Copies To Appropriate District Office
District I
1625 N. French Dr., Hobbs, NM 88240
District II
1301 W. Grand Ave., Artesia, NM 88210
District III
1000 Rio Brazos Rd., Aztec, NM 87410
District IV
1220 S. St. Francis Dr., Santa Fe, NM 87505

State of New Mexico
Energy, Minerals and Natural Resources

Form C-103
Revised May 08, 2003

OIL CONSERVATION DIVISION
1220 South St. Francis Dr.
Santa Fe, NM 87505

WELL API NO. **30-039-24222**

5. Indicate Type of Lease
STATE ☐ FEE ☒

6. State Oil & Gas Lease No.

7. Lease Name or Unit Agreement Name
Naomi Com

8. Well Number
1

9. OGRID Number
22044

10. Pool name or Wildcat
Blanco Mesaverde

SUNDRY NOTICES AND REPORTS ON WELLS
(DO NOT USE THIS FORM FOR PROPOSALS TO DRILL OR TO DEEPEN OR PLUG BACK TO A DIFFERENT RESERVOIR. USE "APPLICATION FOR PERMIT" (FORM C-101) FOR SUCH PROPOSALS.)

1. Type of Well:
Oil Well ☐ Gas Well ☒ Other

2. Name of Operator
McElvain Oil & Gas Properties, Inc.

3. Address of Operator
1050 17th Street #1800 Denver, CO 80265

4. Well Location
Unit Letter **L** : **1650** feet from the **South** line and **450** feet from the **West** line
Section **25** Township **25N** Range **3W** NMPM County **Rio Arriba**

11. Elevation (Show whether DR, RKB, RT, GR, etc.)
7077' GL

12. Check Appropriate Box to Indicate Nature of Notice, Report or Other Data

NOTICE OF INTENTION TO:

PERFORM REMEDIAL WORK ☐ PLUG AND ABANDON ☐
TEMPORARILY ABANDON ☐ CHANGE PLANS ☐
PULL OR ALTER CASING ☐ MULTIPLE COMPLETION ☐
OTHER: ☐

SUBSEQUENT REPORT OF:

REMEDIAL WORK ☐ ALTERING CASING ☐
COMMENCE DRILLING OPNS. ☐ PLUG AND ABANDONMENT ☒
CASING TEST AND CEMENT JOB ☐
OTHER: ☐

13. Describe proposed or completed operations. (Clearly state all pertinent details, and give pertinent dates, including estimated date of starting any proposed work). SEE RULE 1103. For Multiple Completions: Attach wellbore diagram of proposed completion or recompletion.

8/26/06 ☐ MIRUSU Spot in tubing. Rig up BOP and floor. Pick up and tally 150 joints of tubing. Tag bridge plug at 5124, pick up to 5115. Rig up pit and pump. Pump 25 bbls fresh water down tubing and shut well in.

8/27/03 RU cementers. Hold safety meeting. Spot 14 sx 3.48 bbls (14.6#/gal 1.37 yield) Cement plug from 5124 to 4974. Pull and lay down 51 joints of tubing to 3481. Spot 28.5 sx 7.3 bbls (14.6#/gal 1.37 yield) cement plug from 3481 to 3165. Pull and lay down 12 joints of tubing to 3093. Spot 13.3 sx 3.33 bbls (14.6#/gal 1.37 yield) cement plug from 3093 to 2950. Pull and lay down 40 joints of tubing to 1792. Spot 14 sx 3.35 bbls (14.6#/gal 1.37 yield) cement plug from 1792 to 1640. Pull and lay down 43 joints of tubing to 390. Spot 16 sx 3.39 bbls (14.6#/gal 1.37 yield) cement plug from 390 to 220. Pull and lay down remaining tubing. Rig down BOP and break head loose. Run 2 joints of tubing to 60 feet. Pump top plug using 4.5 bbls, pull tubing and top off with 1.5 bbls cement. Rig down cementers. RDSU.
First 4 plugs witnessed by Bruce Martin, NMOCD

I hereby certify that the information above is true and complete to the best of my knowledge and belief.

SIGNATURE John D. Steuble TITLE Engineering Manager DATE 10-8-2003

Type or print name John D. Steuble Telephone No. 303-893-0933

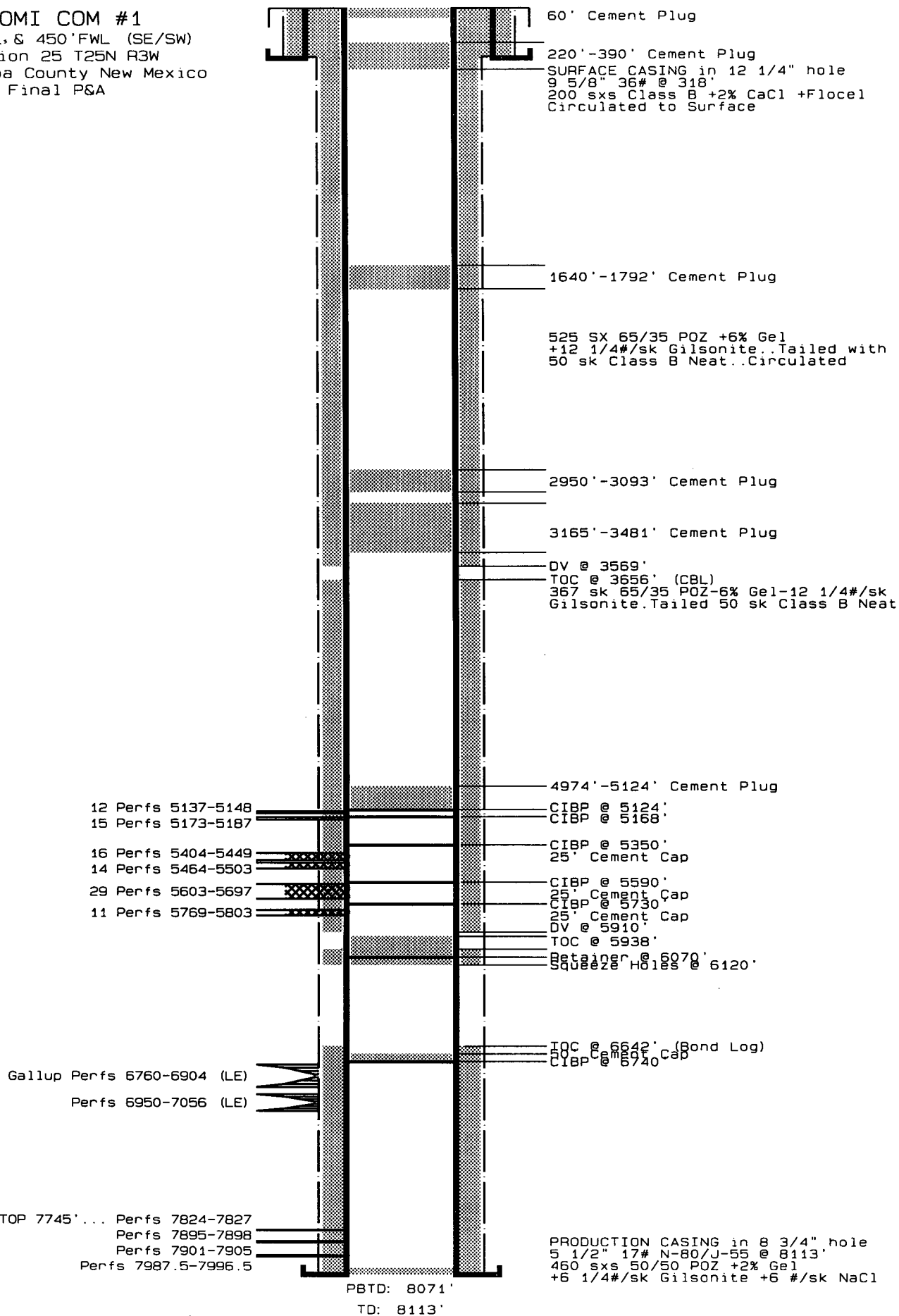
(This space for State use)

APPROVED BY H. Villanueva TITLE DEPUTY OIL & GAS INSPECTOR, DIST. 52

Conditions of approval, if any:

OCT 10 2004

NAOMI COM #1
 1650' FSL & 450' FWL (SE/SW)
 Section 25 T25N R3W
 Rio Arriba County New Mexico
 Final PSA



NAOMI COM #1
 1650' FSL & 450' FWL (SE/SW)
 Section 25 T25N R3W
 Rio Arriba County New Mexico
 Final P&A

