

UNITED STATES
DEPARTMENT OF THE INTERIOR
BUREAU OF LAND MANAGEMENT

FORM APPROVED
OMB No. 1004-0135
Expires January 31, 2004

SUNDRY NOTICES AND REPORTS ON WELLS
Do not use this form for proposals to drill or to re-enter an abandoned well. Use Form 3160-3 (APD) for such proposals.

SUBMIT IN TRIPLICATE - Other instructions on reverse side

1. Type of Well

☐ Oil Well ☒ Gas Well ☐ Other

2. Name of Operator

McElvain Oil & Gas Properties, Inc.

3a. Address

1050 17 th Street #1800 Denver, CO 80123

3b. Phone No. (include area code)

303-893-0933

4. Location of Well (Footage, Sec., T., R., M., or Survey Description)

990' FNL & 990' FEL Sec. 34 T25N R3W

5. Lease Serial No.

SF081334

6. If Indian, Allottee or Tribe Name

7. If Unit or CA/Agreement, Name and/or No.

8. Well Name and No.

Greenlee Federal #41-24

9. API Well No.

30-039-24140

10. Field and Pool, or Exploratory Area

W. Lindrith Gallup Dakota

11. County or Parish, State

Rio Arriba, NM

12. CHECK APPROPRIATE BOX(ES) TO INDICATE NATURE OF NOTICE, REPORT, OR OTHER DATA

TYPE OF SUBMISSION

TYPE OF ACTION

☒ Notice of Intent

☐ Subsequent Report

☐ Final Abandonment Notice

☐ Acidize

☐ Alter Casing

☐ Casing Repair

☐ Change Plans

☐ Convert to Injection

☐ Deepen

☐ Fracture Treat

☐ New Construction

☒ Plug and Abandon

☐ Plug Back

☐ Production (Start/Resume)

☐ Reclamation

☐ Recomplete

☐ Temporarily Abandon

☐ Water Disposal

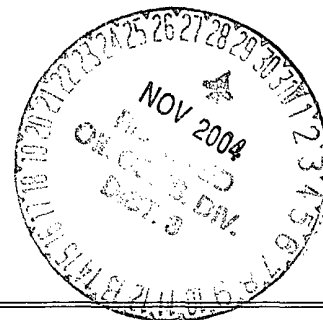
☐ Water Shut-Off

☐ Well Integrity

☐ Other

13. Describe Proposed or Completed Operation (clearly state all pertinent details, including estimated starting date of any proposed work and approximate duration thereof. If the proposal is to deepen directionally or recomplete horizontally, give subsurface locations and measured and true vertical depths of all pertinent markers and zones. Attach the Bond under which the work will be performed or provide the Bond No. on file with BLM/BIA. Required subsequent reports shall be filed within 30 days following completion of the involved operations. If the operation results in a multiple completion or recompletion in a new interval, a Form 3160-4 shall be filed once testing has been completed. Final Abandonment Notices shall be filed only after all requirements, including reclamation, have been completed, and the operator has determined that the site is ready for final inspection.)

McElvain Oil & Gas Properties, Inc. intends to plug & abandon this well per the attached procedure.



14. I hereby certify that the foregoing is true and correct
Name (Printed/Typed)

John D. Steuble

Title **Vice President, Engineering**

Signature

John D. Steuble

Date **October 7, 2004**

THIS SPACE FOR FEDERAL OR STATE OFFICE USE

Approved by

Original Signed: Stephen Mason

Title

Date

NOV 22 2004

Conditions of approval, if any, are attached. Approval of this notice does not warrant or certify that the applicant holds legal or equitable title to those rights in the subject lease which would entitle the applicant to conduct operations thereon.

Office

Title 18 U.S.C. Section 1001 and Title 43 U.S.C. Section 1212, make it a crime for any person knowingly and willfully to make to any department or agency of the United States any false, fictitious or fraudulent statements or representations as to any matter within its jurisdiction.

(Instructions on reverse)

NMOC

P&A Procedure

Greenlee Federal #41-24

Lease Designation and Serial No. SF081334

Unit or CA Designation: NMNM80125

API # 30-039-24140

Field: W. Lindrith Gallup Dakota

Location: 990 FNL & 990 FEL, Section 34, T25N R3W Rio Arriba Co. NM.

TD 8170'

PBTD 8106'

Current Status

Hole and Casing

Surface: 12 1/4" hole surface to 503'

9 5/8 " 36# casing set at 503'. Cemented with 296 sx Class 'B' with 2% CaCl and .25#/sx celoflake. 350ft3 of Class B cement. Circulated to surface.

Production: 7 7/8" hole to 8170'.

5 1/2" 15.5# and 17# casing set at 8149. DV tools at 4975 and 3458. Cemented in 3 stages with 1332 ft3 cement.

Stage 1: 480 sx Class 'B' 50/50 poz. With 2% gel, 6#/sx salt, 6.25 #/sx gilsonite. 13.11 #/gal. 51 sx Class 'B' neat. 751 ft3 of cement.

Cement top @ 5532' (CBL)

Stage 2: 240 sx Class 'B' 50/50 poz. With 2% gel, 6#/sx salt, 6.25 #/sx gilsonite. 13.11 #/gal. 51 sx Class 'B' neat. 406 ft3 of cement.

Cement top @ 3590' (CBL)

Stage 3: 80 sx Class 'B' 50/50 poz. With 2% gel, 6#/sx salt, 6.25 #/sx gilsonite. 13.11 #/gal. 51 sx Class 'B' neat. 175 ft3 of cement.

Cement top 1606' (CBL)

Perforations:

Dakota 7978 to 8079 with 30 shots.

Gallup 6976 to 7088 with 58 shots.

Plug Back: Cement at 8106'

Formation Tops:

Nacimiento	1640
Ojo Alamo	3520
Pictured Cliffs	3600
Cliff House	5325
Mancos	5925
Gallup	7400
Greenhorn	7785
Graneros	7850
Dakota	7955

Tubing: 2 7/8 set at 8042.

Procedure

1. Rig up service unit.
2. Blow down well.
3. Pump 50 bbls fresh water down casing
4. Pump 80 bbls heated water down tubing
5. Rig up BOP and test.
6. Pull and tally tubing lay down excess tubing. Visually inspect tubing for holes and corrosion. Lay down excess.
7. Rig up wireline and set CIBP at +/- 6950. 6486
8. Run tubing to CIBP and spot balanced cement plug from 6950 to ~~6750~~ ⁶⁴⁸⁶ with ~~34~~ ⁴⁰ sx cement. (Gallup plug)
9. Pull tubing to 5375 +/- and spot balanced cement plug from to 5375 to ~~5225~~ ⁴⁰ with ~~28~~ ⁴⁰ sx cement. (Mesaverde plug) *inside + outside*
10. Pull tubing to 3650 +/- and spot balanced cement plug from ~~3650~~ ⁷⁶ to ~~3420~~ ³¹⁹⁹ with ~~38~~ ⁴⁰ sx cement. (Pictured Cliffs-Ojo Alamo)
Chalera Plug - inside/outside 4625 - 4525
11. Pull tubing and lay down excess 1958 1858
12. Pull tubing to 1690 +/- and spot balanced cement plug from ~~1690~~ to ~~1540~~ with ~~26~~ ⁴⁰ sx cement. (Nacimiento)
13. Rig up wire line and perforate at 553'. Tie onto casing and attempt to circulate out of bradenhead. Drop dye and calculate cement volume. Circulate cement out of bradenhead.
14. Rig down BOP
15. Cut off casing and well head.
16. Top off casing with cement.
17. Check that cement is at top of well, fill up casing stub with sacrete if necessary. Install dry hole marker and reclaim location.

All cement volumes are using 15.6# Class B (yield 1.18) with 50% excess.

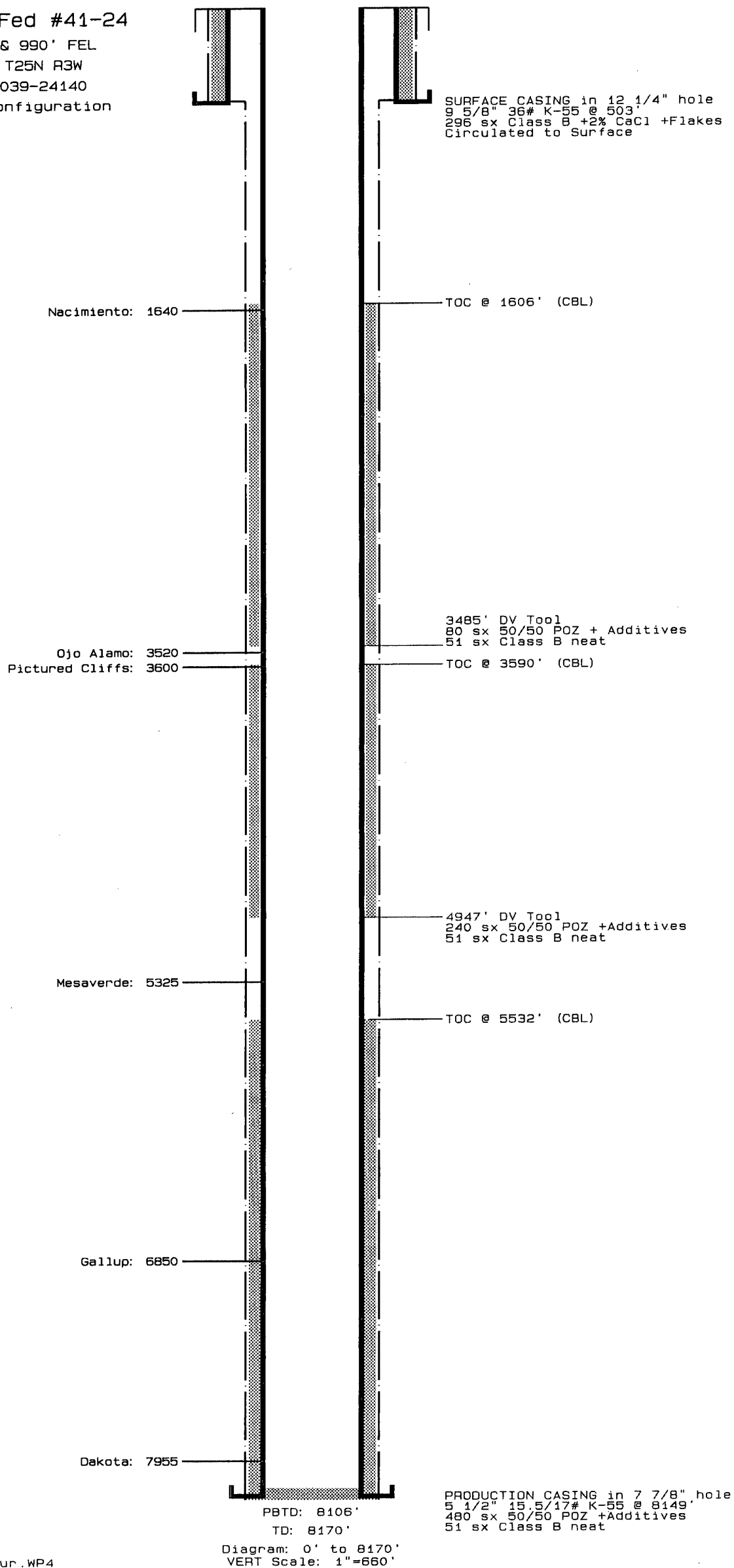
Greenlee Fed #41-24

990' FNL & 990' FEL

Sec. 31 T25N R3W

API: 30-039-24140

Existing Configuration



Greenlee Fed #41-24

990' FNL & 990' FEL

Sec. 31 T25N R3W

API: 30-039-24140

Existing Configuration

Gallup 58 Perfs 6976-7088

Dakota 30 Perfs 7978-8079

PBTD: 8106'

TD: 8170'

Diagram: 0' to 8170'
VERT Scale: 1"=660'

SURFACE CASING in 12 1/4" hole
9 5/8" 36# K-55 @ 503'
296 sx Class B +2% CaCl +Flakes
Circulated to Surface

TOC @ 1606' (CBL)

3485' DV Tool
80 sx 50/50 POZ + Additives
51 sx Class B neat

TOC @ 3590' (CBL)

4947' DV Tool
240 sx 50/50 POZ +Additives
51 sx Class B neat

TOC @ 5532' (CBL)

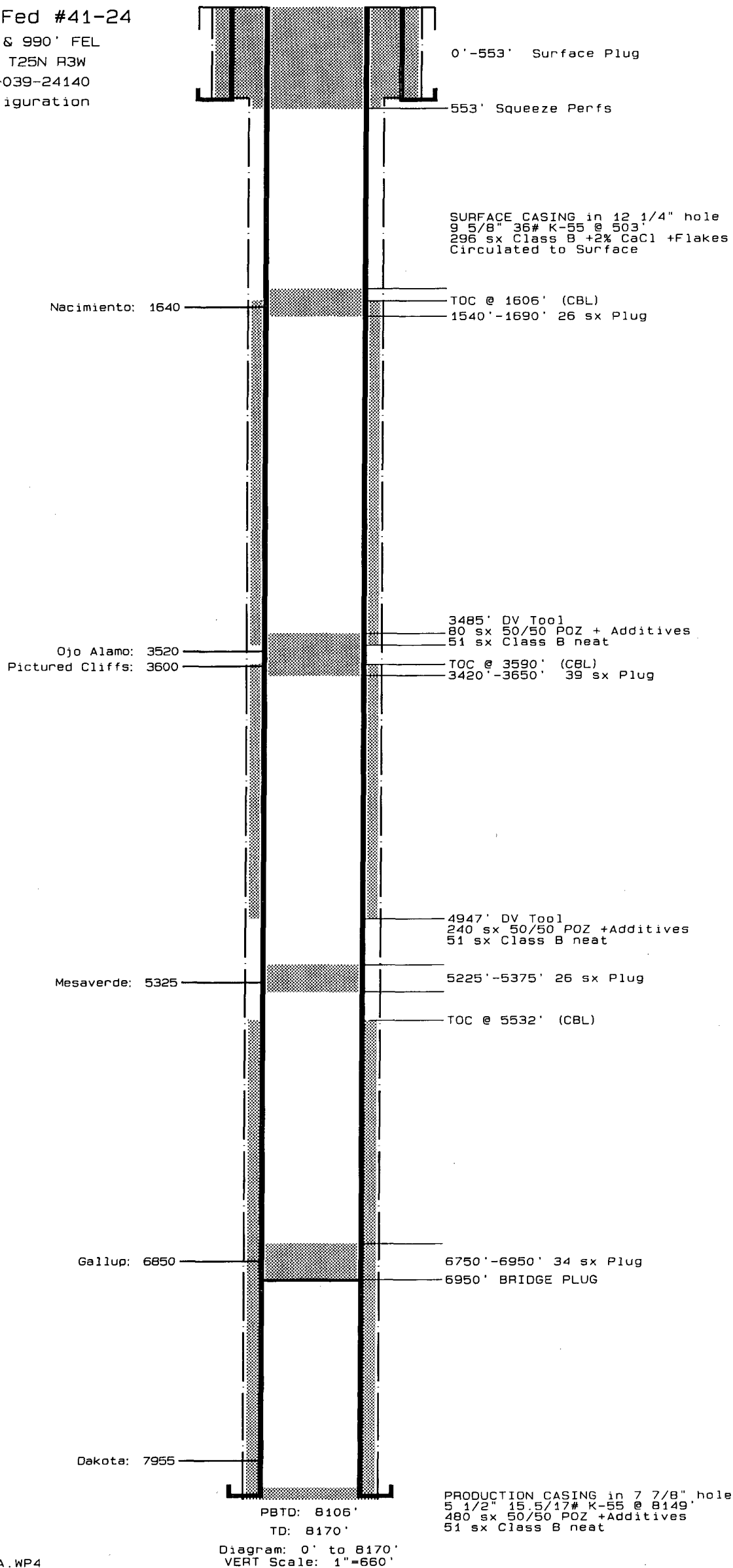
PRODUCTION CASING in 7 7/8" hole
5 1/2" 15.5/17# K-55 @ 8149'
480 sx 50/50 POZ +Additives
51 sx Class B neat

29 Sep 2004

File: Grnlee42-27.cur.WP4

Greenlee Fed #41-24

990' FNL & 990' FEL
 Sec. 31 T25N R3W
 API: 30-039-24140
 PSA Configuration



Greenlee Fed #41-24

990' FNL & 990' FEL

Sec. 31 T25N R3W

API: 30-039-24140

PSA Configuration

