

District I
1625 N. French Dr., Hobbs, NM 88240
District II
1301 W. Grand Avenue, Artesia, NM 88210
District III
1000 Rio Brazos Road, Aztec, NM 87410
District IV
1220 S. St. Francis Dr., Santa Fe, NM 87505

State of New Mexico
Energy Minerals and Natural Resources

Form C-101
May 27, 2004

Oil Conservation Division
1220 South St. Francis Dr.
Santa Fe, NM 87505

Submit to appropriate District Office

☐ AMENDED REPORT

APPLICATION FOR PERMIT TO DRILL, RE-ENTER, DEEPEN, PLUGBACK, OR ADD A ZONE

¹ Operator Name and Address Williams Production Company, LLC c/o New Horizons Consultants, Inc. P.O. Box 1391 Cortez, CO 81321		² OGRID Number 120782
³ Property Code 17036	⁴ Property Name Cox Canyon Unit	⁵ API Number 30 - 045-32733
⁹ Proposed Pool 1 Blanco Mesa Verde		⁶ Well No. 6C
¹⁰ Proposed Pool 2		

7 Surface Location

UL or lot no. 0	Section 16	Township 32N	Range 11W	Lot Idn	Feet from the 1305	North/South line SOUTH	Feet from the 2095	East/West line EAST	County San Juan
--------------------	---------------	-----------------	--------------	---------	-----------------------	---------------------------	-----------------------	------------------------	--------------------

8 Proposed Bottom Hole Location If Different From Surface

UL or lot no.	Section	Township	Range	Lot Idn	Feet from the	North/South line	Feet from the	East/West line	County
---------------	---------	----------	-------	---------	---------------	------------------	---------------	----------------	--------

Additional Well Information

¹¹ Work Type Code N	¹² Well Type Code M	¹³ Cable/Rotary R	¹⁴ Lease Type Code S	¹⁵ Ground Level Elevation 6861
¹⁶ Multiple Yes	¹⁷ Proposed Depth 6343	¹⁸ Formation Blanco Mesa Verde	¹⁹ Contractor Aztec Well Services	²⁰ Spud Date When Approved
Depth to Groundwater >1000' 750' < 100'		Distance from nearest fresh water well >1000'		Distance from nearest surface water >1000'
Pit: Liner: Synthetic X 12 mils thick Clay <input type="checkbox"/> Pit Volume: 10,000 bbls Drilling Method: Closed-Loop System <input type="checkbox"/> Fresh Water X Brine <input type="checkbox"/> Diesel/Oil-based <input type="checkbox"/> Gas/Air <input type="checkbox"/>				

21 Proposed Casing and Cement Program

Hole Size	Casing Size	Casing weight/foot	Setting Depth	Sacks of Cement	Estimated TOC
12-1/4"	9-5/8"	36	+/- 300'	150	Surface
8-3/4"	7"	20#	+/- 3,043'	370 / 50	Surface
6-1/4"	4-1/2"	10.5	2,943' - 6,343'	50 / 145	100' into Intermed

²² Describe the proposed program. If this application is to DEEPEN or PLUG BACK, give the data on the present productive zone and proposed new productive zone. Describe the blowout prevention program, if any. Use additional sheets if necessary.

See Attached Operations Plan



²³ I hereby certify that the information given above is true and complete to the best of my knowledge and belief. I further certify that the drilling pit will be constructed according to NMOC guidelines <input type="checkbox"/> , a general permit <input type="checkbox"/> , or an (attached) alternative OCD-approved plan X.		OIL CONSERVATION DIVISION	
Printed name: Don Hamilton		Approved by:	
Title: Agent		Title: DEPUTY OIL & GAS INSPECTOR, DIST. #9	
E-mail Address: starpoint@etv.net		Approval Date: DEC 13 2004	
Date: 12-7-04		Expiration Date: DEC 13 2005	
Phone: 435-637-4075		Conditions of Approval: <input checked="" type="checkbox"/> Complete pit registration information must be submitted prior to well site construction	

District I
PO Box 1980, Hobbs, NM 88241-1980

District II
PO Drawer DD, Artesia, NM 88211-0719

District III
1000 Rio Brazos Rd., Aztec, NM 87410

District IV
PO Box 2088, Santa Fe, NM 87504-2088

State of New Mexico
Energy, Minerals & Natural Resources Department

OIL CONSERVATION DIVISION
PO Box 2088
Santa Fe, NM 87504-2088

Form C-102
Revised February 21, 1994
Instructions on back
Submit to Appropriate District Office
State Lease - 4 Copies
Fee Lease - 3 Copies

☐ AMENDED REPORT

WELL LOCATION AND ACREAGE DEDICATION PLAT

*API Number 30-045-32733		*Pool Code 72319	*Pool Name BLANCO MESAVERDE
*Property Code 17036	*Property Name COX CANYON UNIT		*Well Number 6C
*GRID No. 120782	*Operator Name WILLIAMS PRODUCTION COMPANY		*Elevation 6861'

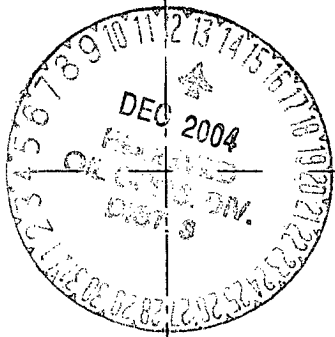

¹⁰ Surface Location

UL or lot no.	Section	Township	Range	Lot Idn	Feet from the	North/South line	Feet from the	East/West line	County
0	16	32N	11W		1305	SOUTH	2095	EAST	SAN JUAN

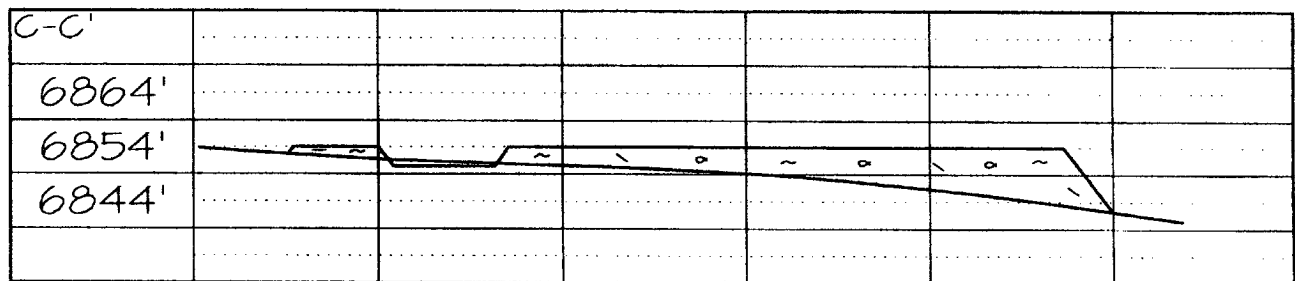
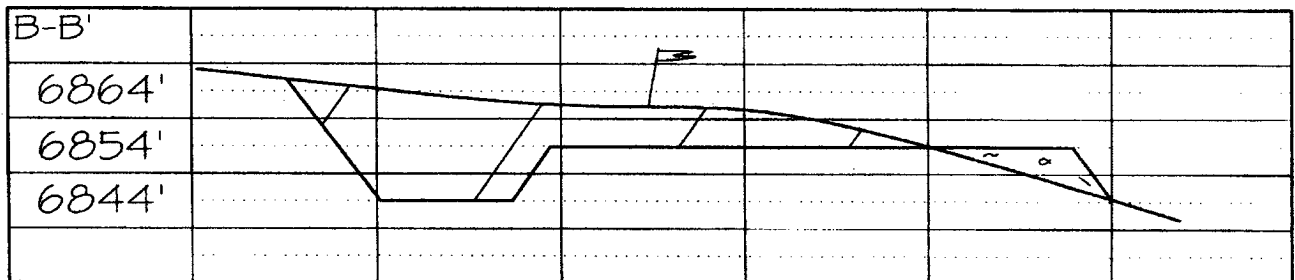
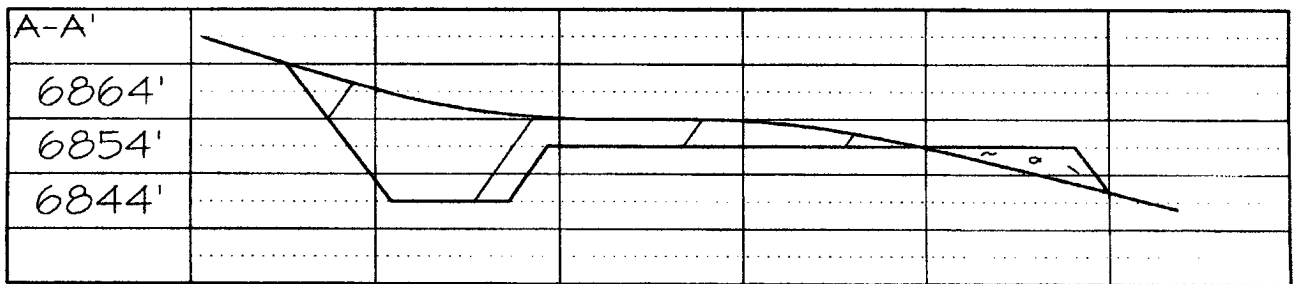
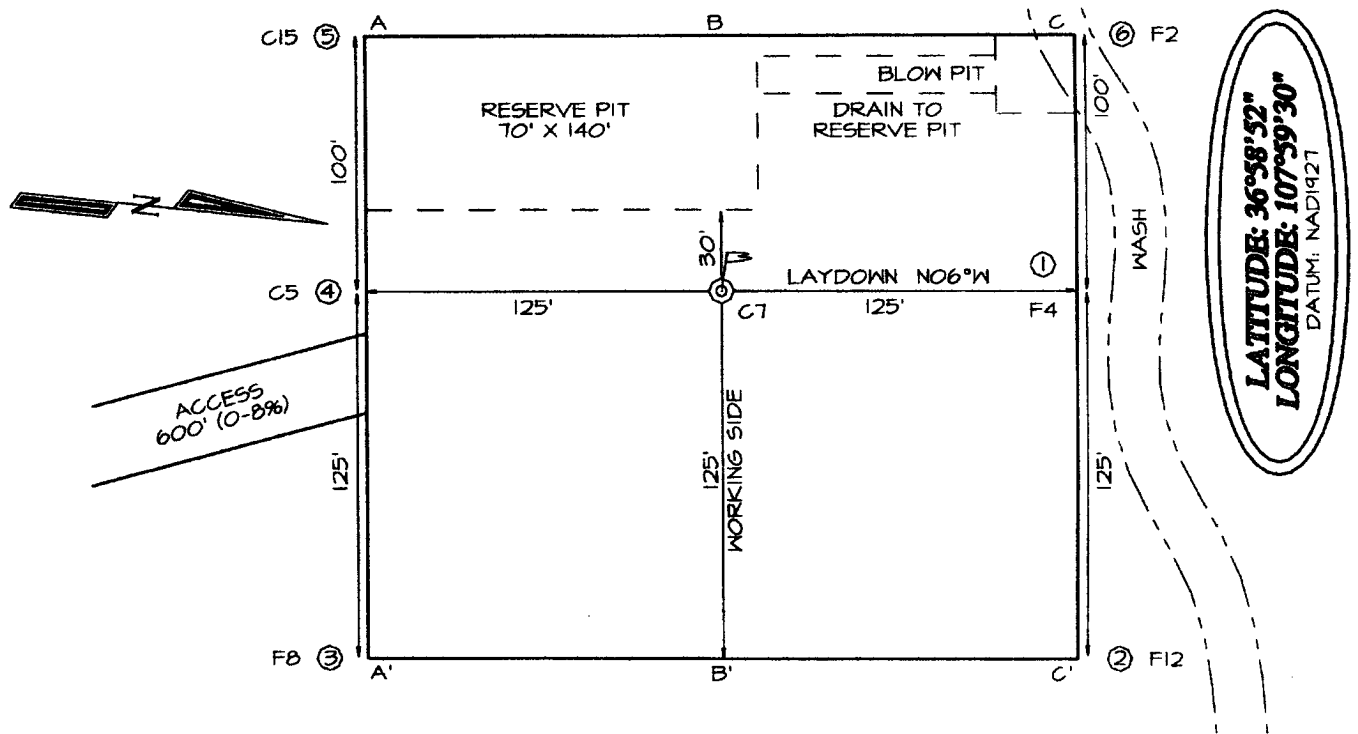
¹¹ Bottom Hole Location If Different From Surface

UL or lot no.	Section	Township	Range	Lot Idn	Feet from the	North/South line	Feet from the	East/West line	County
¹² Dedicated Acres 320.0 Acres - (E/2)					¹³ Joint or Infill		¹⁴ Consolidation Code		¹⁵ Order No.

NO ALLOWABLE WILL BE ASSIGNED TO THIS COMPLETION UNTIL ALL INTERESTS HAVE BEEN CONSOLIDATED OR A NON-STANDARD UNIT HAS BEEN APPROVED BY THE DIVISION

	5129.52'	STATE OF NEW MEXICO E-5387-3	STATE OF NEW MEXICO E-3094-6	¹⁷ OPERATOR CERTIFICATION I hereby certify that the information contained herein is true and complete to the best of my knowledge and belief. <u>Don Hamilton</u> Signature <u>Don Hamilton</u> Printed Name <u>Agent</u> Title <u>12-7-04</u> Date		
	5307.72'		STATE OF NEW MEXICO E-3093-5		¹⁸ SURVEYOR CERTIFICATION I hereby certify that the well location shown on this plat was plotted from field notes of actual surveys made by me or under my supervision, and that the same is true and correct to the best of my belief. Survey Date: NOVEMBER 17, 2004 Signature and Seal of Professional Surveyor  <u>JASON C. EDWARDS</u> Certificate Number 15269	
			STATE OF NEW MEXICO E-3091-5			STATE OF NEW MEXICO E-3087-5
		5109.72'				STATE OF NEW MEXICO E-3092-6

WILLIAMS PRODUCTION COMPANY COX CANYON UNIT #6C
1305' FSL & 2095' FEL, SECTION 16, T32N, R11W, NMPM
SAN JUAN COUNTY, NEW MEXICO
GROUND ELEVATION: 6861'





WILLIAMS PRODUCTION COMPANY

Operations Plan

(Note: This procedure will be adjusted on site based upon actual conditions)

<u>DATE:</u>	12/6/2004	<u>FIELD:</u>	Blanco MV
<u>WELL NAME:</u>	Cox Canyon Unit #6C	<u>SURFACE:</u>	STATE
<u>LOCATION:</u>	SWSE Sec 16-32N-11W San Juan, NM	<u>MINERALS:</u>	STATE
<u>ELEVATION:</u>	6,861' GR	<u>LEASE #</u>	E-3091
<u>MEASURED DEPTH:</u>	6,342'		

I. GEOLOGY: Surface formation - San Jose

A. FORMATION TOPS: (KB)

Ojo Alamo	1,728	Cliff House	5,393
Kirtland	1,768	Menefee	5,473
Fruitland	3,093	Point Lookout	5,843
Picture Cliffs	3,563	Mancos	6,168
Lewis	3,718	TD	6,343

B. MUD LOGGING PROGRAM:

C. LOGGING PROGRAM: High Resolution Induction/ GR and Density/ Neutron log from intermediate shoe to TD. Onsite geologist will pick Density/ Neutron log intervals on both logging runs.

D. NATURAL GAUGES: Gauge any noticeable increases in gas flow. Record all gauges in Tour book and on morning reports.

II. DRILLING

A. MUD PROGRAM: Clear water with benex to 7" casing point. Convert to a LSND mud to log and run pipe. Treat for lost circulation as necessary. Obtain 100% returns prior to cementing. Notify Engineering of any mud losses. Use air w/Air Hammer from 7 in. csg.to TD.

B. BOP TESTING: While drill pipe is in use, the pipe rams and the blind rams will be function tested once each trip. The anticipated reservoir is expected to be less than 1300 psi, so the rams will be tested to 1500 psi. The surface and intermediate casing strings will be pressure tested to 1500 psi in conjunction with the BOP test before drilling out cement. The drum brakes will be inspected and tested each tour. All tests, inspections and SPR's will be recorded in the tour book as to time and results.

III. MATERIALS**A. CASING PROGRAM:**

<u>CASING TYPE</u>	<u>HOLE SIZE</u>	<u>DEPTH (MD)</u>	<u>CASING SIZE</u>	<u>WT. & GRADE</u>
Surface	12-1/4"	+/- 300'	9-5/8"	36# K-55
Intermediate	8-3/4"	+/- 3,043'	7"	20# K-55
Prod. Liner	6-1/4"	+/- 2,943'-6,343'	4-1/2"	10.5# K-55

B. FLOAT EQUIPMENT:

1. SURFACE CASING: 9-5/8" notched regular pattern guide shoe. Run (1) standard centralizer on each of the bottom (4) joints of Surface Casing.
2. INTERMEDIATE CASING: 7" cement nose guide shoe with a self-fill insert float. Place float collar one joint above the shoe. Install (1) Turbulent centralizer on each of the bottom (3) joints and one standard centralizer every (3) joints to 2,500 ft. Run (1) Turbulent centralizer at 2,700 ft., 2,500 ft., 2,300ft., 2,000ft., 1,500 ft., and 1,000 ft. (NTL-FRA 90-1).
3. PRODUCTION LINER / CASING: 4-1/2" & 5-1/2" whirler type cement nose guide shoe with a latch collar on top of 20' bottom joint. Place marker joint above 5,400'. Place centralizers as needed across selected production intervals.

C. CEMENTING:

(Note: Volumes may be adjusted onsite due to actual conditions)

1. SURFACE: Slurry: 150sx (205 cu.ft.) of "Type III" + 2% CaCl₂ + 1/4 # of cello-flake/sk (Yield = 1.39 cu.ft./sk, Weight = 14.5 #/gal.). The 100% excess should circulate cement to the surface. WOC 12 hours. Test csg to 1500psi.
2. INTERMEDIATE: Lead - 370 sx (775) cu.ft.) of "Type III" 65/35 poz with 8% gel, 1% CaCl₂ and 1/4# cello-flake/sk (Yield = 2.09 cu.ft./sk, Weight = 12.1 #/gal.). Tail - 50 sx (70cu.ft.) of "Type III" with 1/4# cello-flake/sk, and 1% CaCl₂ (Yield = 1.4 cu.ft./sk, Weight = 14.5#/gal.). Use **100% excess in Lead Slurry to circulate to surface. No excess in Tail Slurry.** Total volume = 845 cu.ft. Bump Plug to 1,500 psi. Notify engineering if cement is not circulated to surface.
3. PRODUCTION LINER: 10 bbl Gelled Water space. Lead: 50sx (130ft³) of Premium Light HS + 1% FL-52 + .2% CD-32, 0.1% R-3, 3 #/sk CSE, 1/4 #/sk cello flake. (Yield = 2.59 cu.ft./sk, Weight = 11.6 #/gal.). Tail: 145 sx (308 ft³) of Premium Light HS + 1% FL-52 + .2% CD-32, 0.1% R-3, 3 #/sk CSE, 1/4 #/sk cello flake and 4% Phenoseal. (Yield = 2.15 ft³/sk, Weight = 12.3 #/gal.). Displace cement at a minimum of 8 BPM. The 20% excess in lead and tail should cover 100 ft into intermediate casing. Total volume 431 ft³. WOC 12 hours



Well Control Equipment Schematic for 2M Service

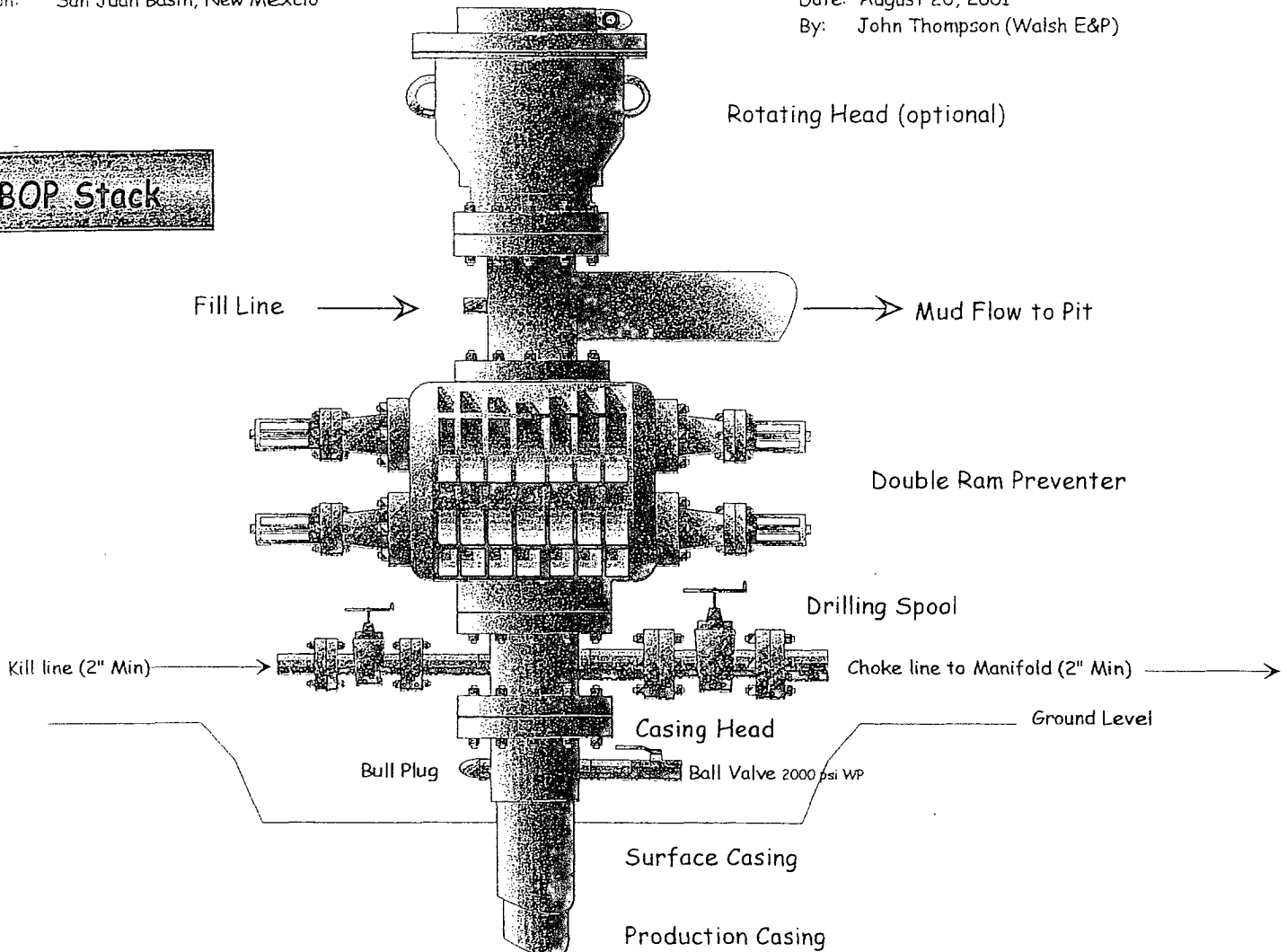
Typical BOP setup

Location: San Juan Basin, New Mexico

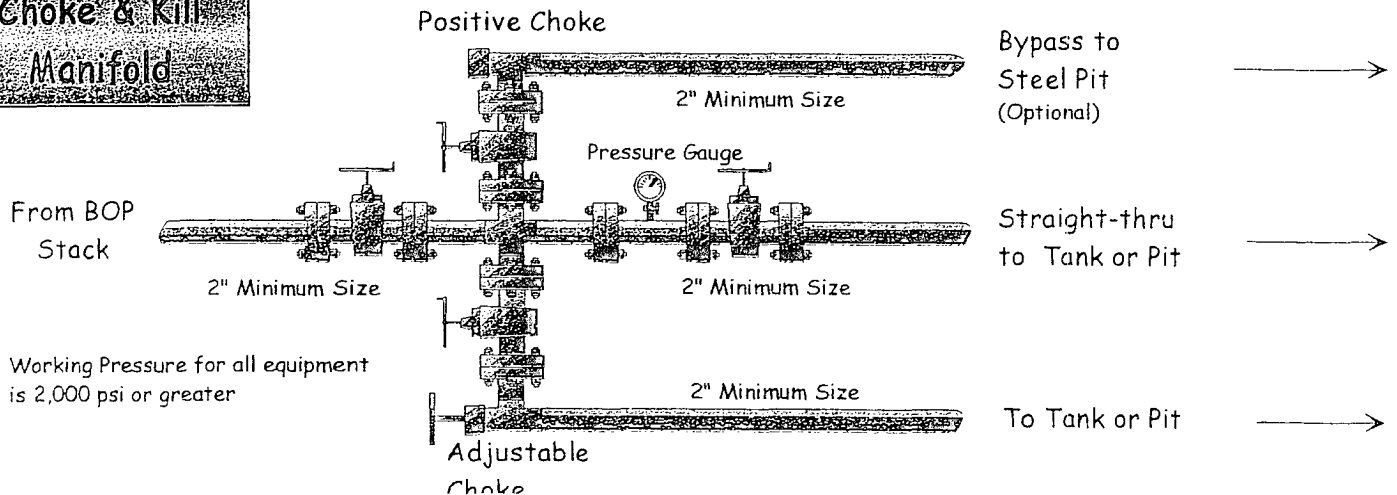
Date: August 20, 2001

By: John Thompson (Walsh E&P)

BOP Stack



Choke & Kill Manifold



Working Pressure for all equipment is 2,000 psi or greater