

Submit 3 Copies To Appropriate District
Office
District I
1625 N. French Dr., Hobbs, NM 88240
District II
1301 W. Grand Ave., Artesia, NM 88210
District III
1000 Rio Brazos Rd., Aztec, NM 87410
District IV
1220 S. St. Francis Dr., Santa Fe, NM
87505

State of New Mexico
Energy, Minerals and Natural Resources

Form C-103
May 27, 2004

OIL CONSERVATION DIVISION
1220 South St. Francis Dr.
Santa Fe, NM 87505

| |
|-----------------------------------------------------------------------------------------------------|
| WELL API NO. 30-04532237 |
| 5. Indicate Type of Lease STATE <input type="checkbox"/> FEE <input checked="" type="checkbox"/> |
| 6. State Oil & Gas Lease No. |
| 7. Lease Name or Unit Agreement Name MONTROYA |
| 8. Well Number #1C |
| 9. OGRID Number 173252 |
| 10. Pool name or Wildcat BASIN DK/BLANCO MESA VERDE |

SUNDRY NOTICES AND REPORTS ON WELLS
(DO NOT USE THIS FORM FOR PROPOSALS TO DRILL OR TO DEEPEN OR PLUG BACK TO A
DIFFERENT RESERVOIR. USE "APPLICATION FOR PERMIT" (FORM C-101) FOR SUCH
PROPOSALS.)

1. Type of Well: Oil Well ☐ Gas Well ☒ Other

2. Name of Operator
PATINA SAN JUAN, INC

3. Address of Operator
5802 U.S. HIGHWAY 64 FARMINGTON, NEW MEXICO 87401

4. Well Location

Unit Letter O : 225 feet from the SOUTH line and 2180 feet from the EAST line
Section 35 Township 32N Range 13W NMPM SAN JUAN County

11. Elevation (Show whether DR, RKB, RT, GR, etc.)
5845' GL

Pit or Below-grade Tank Application ☒ or Closure ☐

Pit type Drilling Depth to Groundwater >100' Distance from nearest fresh water well >1000' Distance from nearest surface water 1000'

Pit Liner Thickness: 12 mil Below-Grade Tank: Volume bbls; Construction Material SYNTHETIC

12. Check Appropriate Box to Indicate Nature of Notice, Report or Other Data

NOTICE OF INTENTION TO:

PERFORM REMEDIAL WORK ☐ PLUG AND ABANDON ☐
TEMPORARILY ABANDON ☐ CHANGE PLANS ☐
PULL OR ALTER CASING ☐ MULTIPLE COMPL ☐

OTHER: CONSTRUCTION OF DRILLING LOCATION ☒

SUBSEQUENT REPORT OF:

REMEDIAL WORK ☐ ALTERING CASING ☐
COMMENCE DRILLING OPNS. ☒ P AND A ☐
CASING/CEMENT JOB ☐

OTHER: ☐

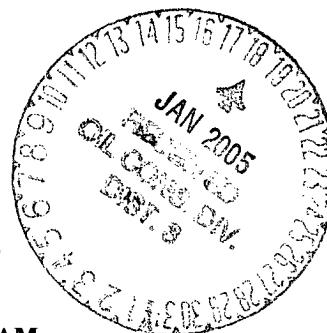
13. Describe proposed or completed operations. (Clearly state all pertinent details, and give pertinent dates, including estimated date of starting any proposed work). SEE RULE 1103. For Multiple Completions: Attach wellbore diagram of proposed completion or recompletion.

PROPOSED MOVE OF DRILLING LOCATION

FROM: 1180' FSL and 1475" FEL

TO: 225' FSL and 2180' FEL

Lot "O" Sec 35 - T32N - R13W SAN JUAN COUNTY, NM



CONSTRUCTION OF RESERVE PIT AT THE DRILLING LOCATION.

SEE ATTACHED CROSS SECTION AND DRILLING PAD/PIT DIAGRAM

HOLD C104 FOR NSL

I hereby certify that the information above is true and complete to the best of my knowledge and belief. I further certify that any pit or below-grade tank has been/will be constructed or closed according to NMOCD guidelines ☒, a general permit ☐ or an (attached) alternative OCD-approved plan ☐.

SIGNATURE [Signature] TITLE Regulatory/Production Technician DATE 01/17/05

Type or print name
For State Use Only

E-mail address:

Telephone No.

APPROVED BY: [Signature] TITLE DEPUTY OIL & GAS INSPECTOR, DIST. 9 DATE JAN 18 2005
Conditions of Approval (if any):

District I
PO Box 1980, Hobbs, NM 88241-1980

District II
PO Drawer DD, Artesia, NM 88211-0719

District III
1000 Rio Brazos Rd., Aztec, NM 87410

District IV
PO Box 2088, Santa Fe, NM 87504-2088

State of New Mexico
Energy, Minerals & Natural Resources Department

OIL CONSERVATION DIVISION
PO Box 2088
Santa Fe, NM 87504-2088

Form C-102
Revised February 21, 1994
Instructions on back
Submit to Appropriate District Office
State Lease - 4 Copies
Fee Lease - 3 Copies

☐ AMENDED REPORT

WELL LOCATION AND ACREAGE DEDICATION PLAT

| | | |
|------------------------------------------------|------------------------------------------------------------|------------------------------------------------------------------|
| ¹ API Number 30-045-32237 | ² Pool Code 72319 / 71599 | ³ Pool Name BLANCO MESAVERDE / BASIN DAKOTA |
| ⁴ Property Code | ⁵ Property Name MONTOYA | ⁶ Well Number 1C |
| ⁷ GRID No. 173252 | ⁸ Operator Name PATINA SAN JUAN, INC. | ⁹ Elevation 5845' |

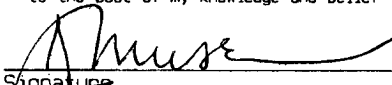
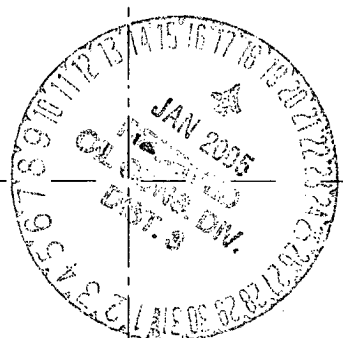
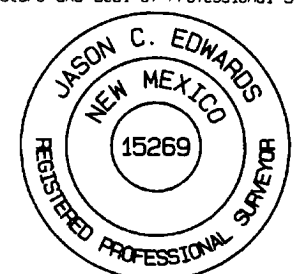
¹⁰ Surface Location

| | | | | | | | | | |
|---------------|-----------|------------|------------|---------|---------------|------------------|---------------|----------------|-----------------|
| UL or lot no. | Section | Township | Range | Lot Idn | Feet from the | North/South line | Feet from the | East/West line | County |
| 0 | 35 | 32N | 13W | | 225 | SOUTH | 2180 | EAST | SAN JUAN |

¹¹ Bottom Hole Location If Different From Surface

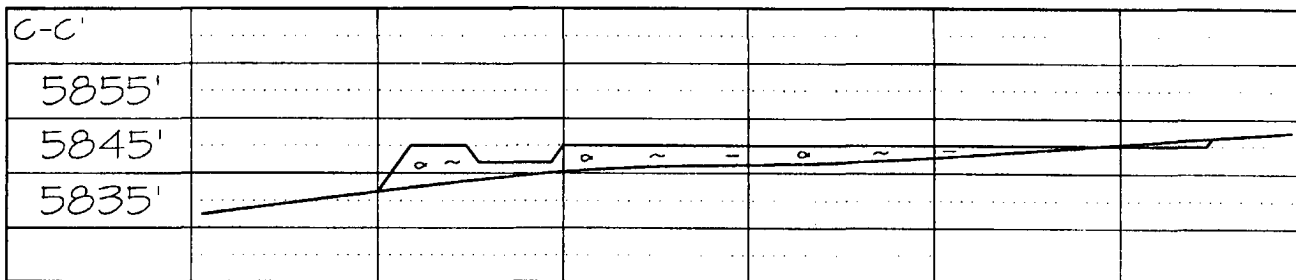
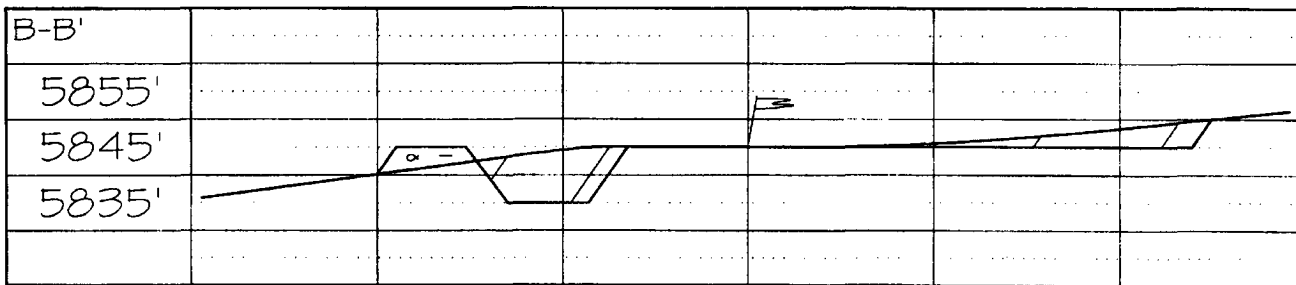
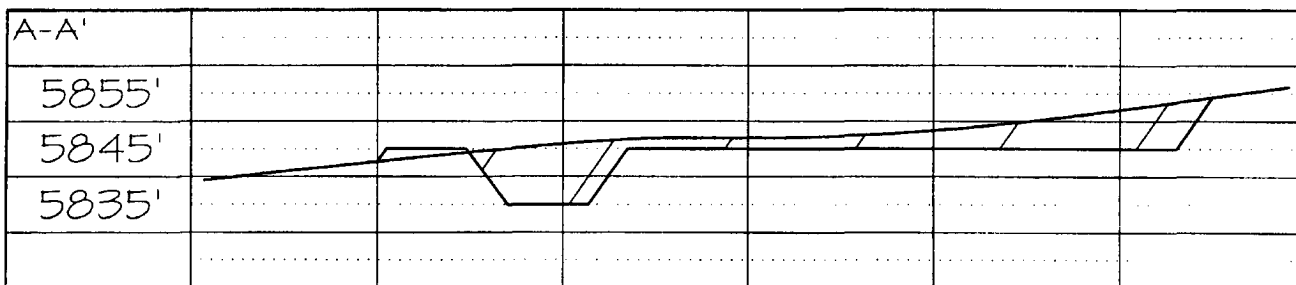
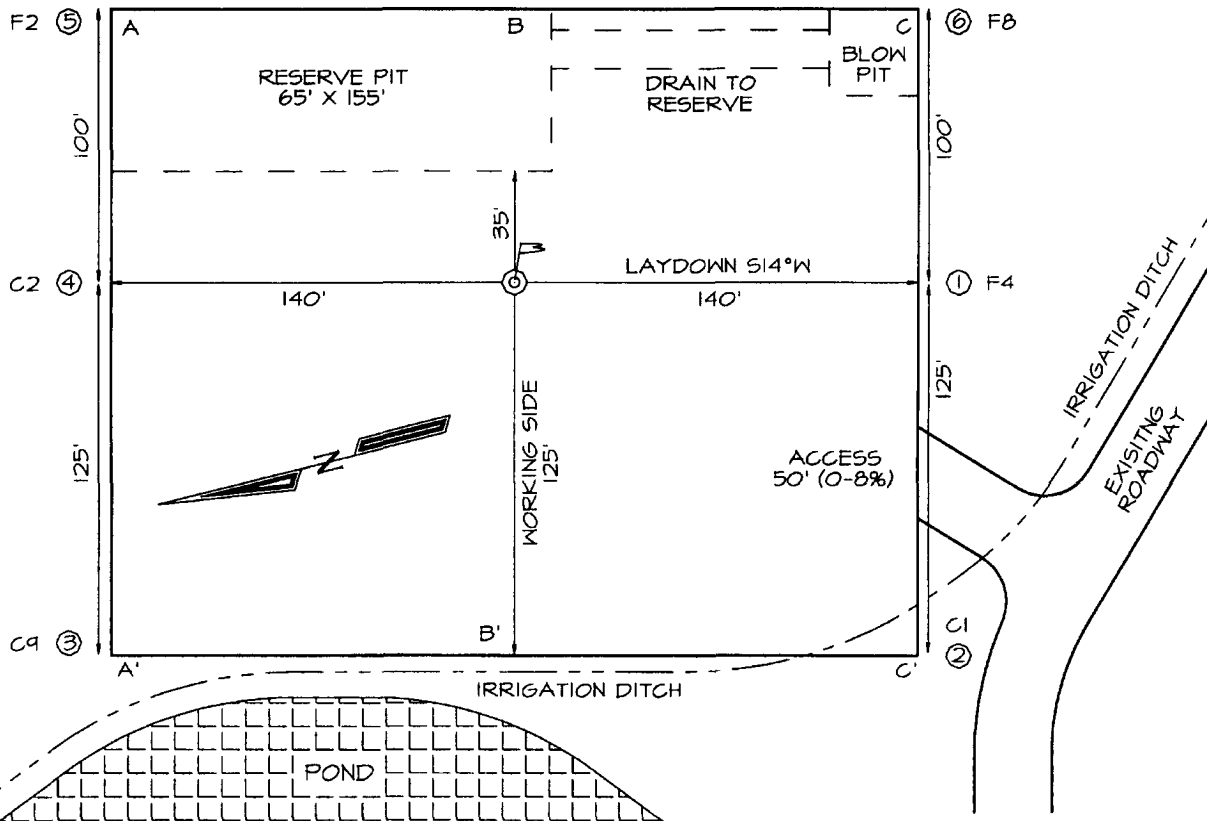
| | | | | | | | | | |
|-------------------------------------------------------------|---------|----------|-------|---------|-------------------------------|------------------|----------------------------------|----------------|-------------------------|
| UL or lot no. | Section | Township | Range | Lot Idn | Feet from the | North/South line | Feet from the | East/West line | County |
| | | | | | | | | | |
| ¹² Dedicated Acres 320.0 Acres - (E/2) | | | | | ¹³ Joint or Infill | | ¹⁴ Consolidation Code | | ¹⁵ Order No. |

NO ALLOWABLE WILL BE ASSIGNED TO THIS COMPLETION UNTIL ALL INTERESTS HAVE BEEN CONSOLIDATED OR A NON-STANDARD UNIT HAS BEEN APPROVED BY THE DIVISION

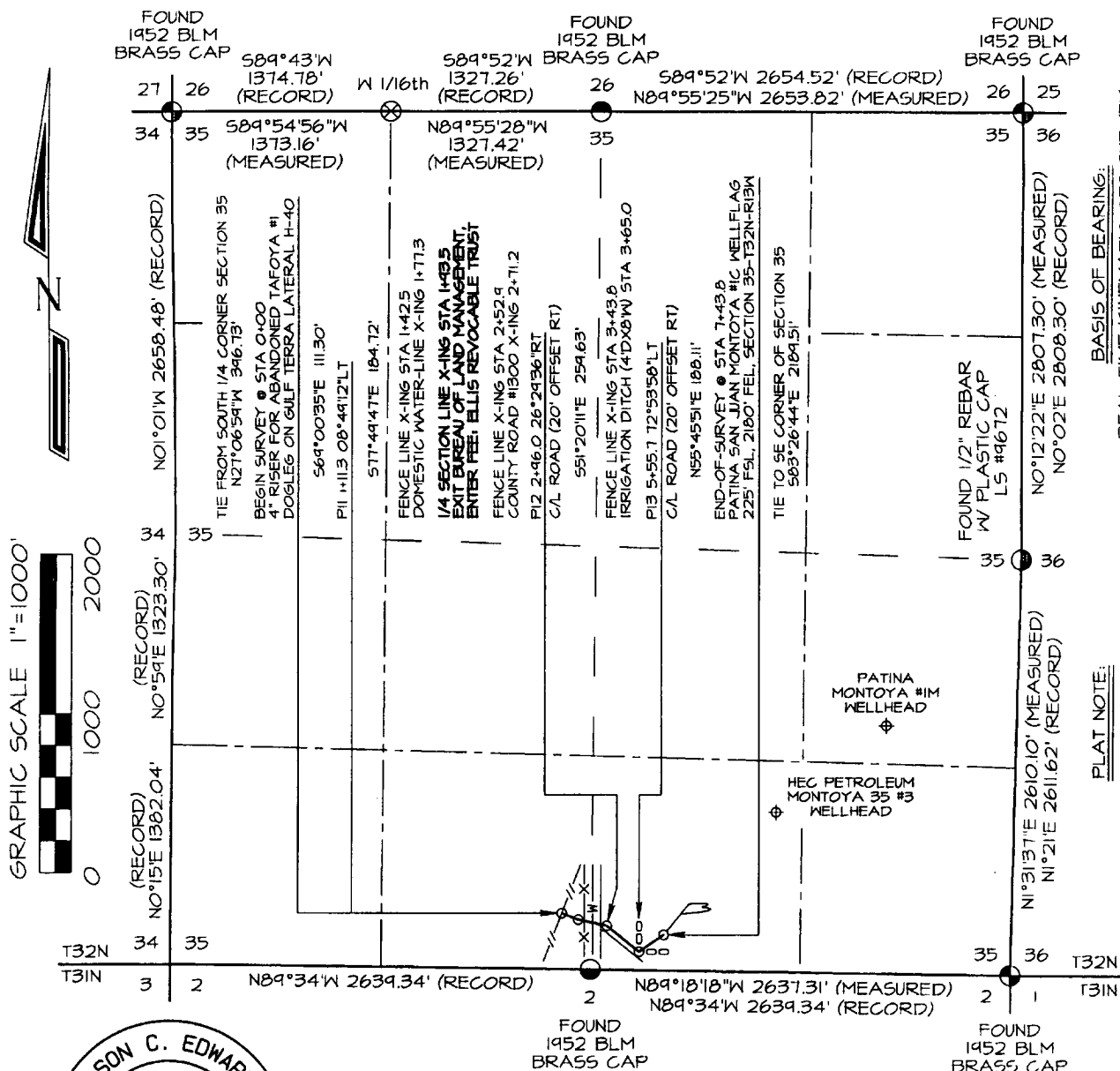
| | | | |
|------------------------|----------|----------|-----------------------------------------------------------------------------------------------------------------------------------------------------------------------------------------------------------------------------------------------------------------------------------------------------------------------------------------------------------------------------------------------------------------------------------------------------------------------------------------------------|
| ¹⁶ 1374.78' | 1327.26' | 2654.52' | ¹⁷ OPERATOR CERTIFICATION I hereby certify that the information contained herein is true and complete to the best of my knowledge and belief  Signature Jason C. Edwards Printed Name Reg/Engn. Tech Title 1/17/05 Date |
| 2658.48' | | 2808.30' |  |
| | | | |
| 1323.30' | | 2611.62' | ¹⁸ SURVEYOR CERTIFICATION I hereby certify that the well location shown on this plat was plotted from field notes of actual surveys made by me or under my supervision, and that the same is true and correct to the best of my belief Survey Date: NOVEMBER 24, 2004 Signature and Seal of Professional Surveyor  JASON C. EDWARDS Certificate Number 15269 |
| 1382.04' | | 5278.68' | |
| | | 225' | |

PATINA SAN JUAN, INC. MONTOYA #1C
225' FSL & 2180' FEL, SECTION 35, T32N, R13W, NMPM
SAN JUAN COUNTY, NEW MEXICO ELEVATION: 5845'

LATITUDE: 36°56'12"
LONGITUDE: 108°10'14"
 DATUM: NAD1927



**PATINA SAN JUAN INC. MONTOYA #1C PROPOSED PIPELINE SURVEY
LOCATED IN THE SE/4 SW/4 & SW/4 SE/4 OF SECTION 35, T32N, R13W
NMPM, SAN JUAN COUNTY, NEW MEXICO**



BASIS OF BEARING:
REAL-TIME KINEMATIC GPS SURVEY SOLUTION OBTAINED FROM SATELLITES TRACKED ON DECEMBER 9, 2004 FROM REFERENCE STATION POSITIONED IN THE SW/4 NW/4 OF SECTION 36, T32N, R13W

PLAT NOTE:
BEFORE ANY CONSTRUCTION BEGINS, CONTRACTOR IS ADVISED TO CALL ONE-CALL FOR LOCATION OF ANY MARKED OR UNMARKED PIPELINES OR CABLES IN THE AREA OF THIS PROJECT



| SURFACE OWNERSHIP | | |
|----------------------------|------------------|----------------------|
| Bureau of Land Management | 0+00 TO 1+93.5 | 193.5 FT / 11.7 RODS |
| FEE: Ellis Revocable Trust | 1+93.5 TO 7+43.8 | 550.3 FT / 33.4 RODS |

I, Jason C. Edwards, a registered Professional Surveyor under the laws of the State of New Mexico, hereby certify that this plat was prepared from field notes of an actual survey meeting the minimum requirements of the standards for easement surveys and is true and correct to the best of my knowledge and belief.

JASON C. EDWARDS Date: January 10, 2004
Jason C. Edwards, P.L.S.
New Mexico LS #15269

| | | | |
|---------------------------------------------------------------------------------------|------------------------------|-------------------------------------------------------------------------------------------------------------------------------------------------------------------------------------------|------------------------------------------------------------------------|
| Prepared for: PATINA SAN JUAN, INC. 5802 US Highway #64 Bloomfield, NM 87401 | SURVEYS, INC. | Land Surveyor: Jason C. Edwards | CHECKED BY: JCE DRAWN BY: SLE SHEET 3 OF 4 FILENAME: 32193562 |
| | | Mailing Address: Post Office Box 6612 Farmington, NM 87499 Business Address: 111 East Pinon Street Farmington, NM 87402 (505) 325-2654 (Office) (505) 326-5650 (Fax) | |

PATINA SAN JUAN, INC. MONTOYA #1C
225' FSL & 2180' FEL, SECTION 35, T32N, R13W, N.M.P.M.
SAN JUAN COUNTY, NEW MEXICO

