

UNITED STATES
DEPARTMENT OF THE INTERIOR
BUREAU OF LAND MANAGEMENT

FORM APPROVED
OMB NO. 1004-0135
Expires: November 30, 2000

SUNDRY NOTICES AND REPORTS ON WELLS
Do not use this form for proposals to drill or to re-enter an abandoned well. Use form 3160-3 (APD) for such proposals.

SUBMIT IN TRIPLICATE - Other instructions on reverse side.

1. Type of Well <input type="checkbox"/> Oil Well <input checked="" type="checkbox"/> Gas Well <input type="checkbox"/> Other		5. Lease Serial No. NMSF078999
2. Name of Operator CONOCOPHILLIPS COMPANY		6. If Indian, Allottee or Tribe Name
3a. Address P O BOX 2197 WL 6106 HOUSTON, TX 77252	3b. Phone Nos. (include area code) Ph: 832-486-2463	7. If Unit or CA/Agreement, Name and/or No.
4. Location of Well (Footage, Sec., T., R., M., or Survey Description) Sec 33 T31N R6W SESW 0850FSL 1840FWL 36.85112 N Lat, 107.47037 W Lon		8. Well Name and No. SJ 31 6 16
Contact: CHRIS GUSTARTIS E-Mail: CHRISTINA.GUSTARTIS@CONOCO		9. API Well No. 10-83907928-00-C1
10. Field and Pool, or Exploratory BLANCO MV / BASIN DAKOTA		11. County or Parish, and State RIO ARRIBA COUNTY, NM

12. CHECK APPROPRIATE BOX(ES) TO INDICATE NATURE OF NOTICE, REPORT, OR OTHER DATA

TYPE OF SUBMISSION	TYPE OF ACTION			
<input type="checkbox"/> Notice of Intent	<input type="checkbox"/> Acidize	<input type="checkbox"/> Deepen	<input type="checkbox"/> Production (Start/Resume)	<input type="checkbox"/> Water Shut-Off
<input checked="" type="checkbox"/> Subsequent Report	<input type="checkbox"/> Alter Casing	<input type="checkbox"/> Fracture Treat	<input type="checkbox"/> Reclamation	<input type="checkbox"/> Well Integrity
<input type="checkbox"/> Final Abandonment Notice	<input type="checkbox"/> Casing Repair	<input type="checkbox"/> New Construction	<input checked="" type="checkbox"/> Recomplete	<input type="checkbox"/> Other
	<input type="checkbox"/> Change Plans	<input type="checkbox"/> Plug and Abandon	<input type="checkbox"/> Temporarily Abandon	
	<input type="checkbox"/> Convert to Injection	<input type="checkbox"/> Plug Back	<input type="checkbox"/> Water Disposal	

13. Describe Proposed or Completed Operation (clearly state all pertinent details, including estimated starting date of any proposed work and approximate duration thereof. If the proposal is to deepen directionally or recompleat horizontally, give subsurface locations and measured and true vertical depths of all pertinent markers and zones. Attach the Bond under which the work will be performed or provide the Bond No. on file with BLM/BIA. Required subsequent reports shall be filed within 30 days following completion of the involved operations. If the operation results in a multiple completion or recompleat in a new interval, a Form 3160-4 shall be filed once testing has been completed. Final Abandonment Notices shall be filed only after all requirements, including reclamation, have been completed, and the operator has determined that the site is ready for final inspection.)

Tubing was pulled from this well and the well was converted from a dual completion to a downhole commingled well, producing from the Blanco Mesaverde and Basing Dakota. New 2.375 tubing is now landed @ 7922.80' KB. Also in reference to NMOCD RBDMS-CTP0427928716, a successful casing integrity test was completed 1/10/05. See attached daily summary report and attached chart.

OHC 1702 AZ

14. I hereby certify that the foregoing is true and correct. Electronic Submission #53314 verified by the BLM Well Information System For CONOCOPHILLIPS COMPANY, sent to the Farmington Committed to AFMSS for processing by MATTHEW HALBERT on 01/25/2005 (05MXH0223SE)	
Name (Printed/Typed) CHRIS GUSTARTIS	Title AUTHORIZED REPRESENTATIVE
Signature (Electronic Submission)	Date 01/24/2005

THIS SPACE FOR FEDERAL OR STATE OFFICE USE

Approved By ACCEPTED	MATTHEW HALBERT Title PETROLEUM ENGINEER	Date 01/25/2005
Conditions of approval, if any, are attached. Approval of this notice does not warrant or certify that the applicant holds legal or equitable title to those rights in the subject lease which would entitle the applicant to conduct operations thereon.	Office Farmington	NMOCD

Title 18 U.S.C. Section 1001 and Title 43 U.S.C. Section 1212, make it a crime for any person knowingly and willfully to make to any department or agency of the United States any false, fictitious or fraudulent statements or representations as to any matter within its jurisdiction.

**** BLM REVISED ** BLM REVISED ** BLM REVISED ** BLM REVISED ** BLM REVISED ****

SAN JUAN 31 6 UNIT #016
Downhole Comingle
Daily Summary

API/UMI 300390792800	County RIO ARriba	State/Province NEW MEXICO	Surface Legal Location NMPM-31N-06W-33-N	N/S Dist. (ft) 850.1	N/S Ref. S	E/W Dist. (ft) 1839.9	E/W Ref. W
Ground Elevation (ft) 6500.00	Spud Date 06/15/1959	Rig Release Date 06/29/1959	Latitude (DMS) 36° 51' 4.032" N	Longitude (DMS) 107° 28' 13.4328" W			

Start Date	Ops This Rot
12/07/2004 11:00	ALL HANDS ATTENDED MONTHLY SAFETY MEETING AT KEY ENERGY'S YARD. DRIVE TO LOCATION. HOLD SAFETY MEETING AND WRITE JSA FOR MOVING. MOVE RIG TO SAN JUAN 31-6 #16. SET IN ALL EQUIPMENT EXCEPT UNIT. UNIT HAD MECHANICAL PROBLEMS ON MOVE AND DID NOT GET TO LOCATION IN TIME TO RIG UP. SDFN
12/08/2004 07:00	HOLD SAFETY MEETING AND WRITE JSA. CHECK LOTO AND LEL. CHECK PRESSURE. DAKOTA - 280 PSI, MV - 260 PSI AND CSG - 340 PSI. SPOT UNIT AND RIG UP. UNLOAD 10" BOP AND RELATED SPOOLS AND EQUIPMENT. SPOT SLICKLINE TRUCK AND RUN GAUGE RING TO 7989' IN 2-3/8" TBG. UNABLE TO SET PLUG. RUN IN TBG WITH "CW" PLUG AND SET @ 5524'. UNABLE TO GET ANY DEEPER WITH PLUG. UNABLE TO GET PLUG IN 1-1/4" TBG. SECURE LOCATION AND SDFN.
12/09/2004 07:00	HOLD SAFETY MEETING AND WRITE JSA. CHECK LOTO AND PRESSURE. MV - 0 PSI, DK - 0 PSI, CSG - 40 PSI. NIPPLE DOWN WELLHEAD AND NIPPLE UP 10" BOP AND SPOOLS. RIG UP FLOOR. UNSEAT 1-1/4" SEAL ASSEMBLY FROM TBG HANGER AND PULL 1-1/4" TBG; LAY DOWN AND STRAP TBG. LAYED DOWN 73 JTS (2184.84'). 3577' OF TBG LEFT IN WELL. LAST 6 JTS HAVE SEVERE CORROSION AND SCALE. REMOVE OFFSET SPOOL FROM BOP. DRAIN PUMP AND LINES, SECURE WELL AND LOCATION AND SDFN.
12/10/2004 07:00	HOLD SAFETY MEETING AND WRITE JSA. CHECK LOTO AND PRESSURE. PRESSURE 0 PSI ON TBG AND CSG. START AND WARM UP EQUIPMENT. TURN OFF SET SPOOL FOR 2-3/8" TBG. RIG UP WIRELINE SPECIALTIES AND RUN IN WELL WITH 2 1-1/2" SINKER BARS. TAG PLUG @ 5541'. TRY TO KNOCK PLUG DOWNHOLE. LOAD TBG WITH 2% KCL WATER. UNABLE TO LOAD TBG. APPARENTLY IT HAS A HOLE IN IT. HIT PLUG SEVERAL MORE TIMES WITH SINKER BAR. NO SUCESS. PULL WIRELINE OUT OF HOLE AND WAIT ON EXPERT DOWN HOLE TO FISH PLUG. RIG UP EXPERT DOWN HOLE AND RUN IN WELL. FLUID LEVEL @ 1700'. PLUG @ 5125'. WORK PLUG OUT. DID NOT RETRIEVE PLUG ON FIRST RUN. RUN IN WELL AND TAG PLUG @ 700'. WORK PLUG OUT OF WELL. RIG DOWN EXPERT DOWN HOLE AND WIRELINE SPECIALTIES. SECURE WELL AND LOCATION AND SDFWE.
12/13/2004 07:00	HOLD SAFETY MEETING AND WRITE JSA. CHECK LOTO AND PRESSURE. SICP - 50 PSI. UNSEAT TBG HANGER, RIG UP WIRELINE SPECIALTIES AND RUN IN WELL WITH FREEPOINT. UNABLE TO GET A GOOD READING. POOH AND CHANGE FREEPOINT TOOLS. RUN IN HOLE WITH FREEPOINT. 1505' - 32-72% FREE, 2960' - 76% FREE, 4005' - 34-40% FREE, RUN FREEPOINT SURVEY TO 7600'. PACKER APPEARS TO BE @ 7313'. CUT OFF TBG @ 7244'. PULL OUT OF WELL WITH FREEPOINT TOOLS. REMOVE OFFSET SPOOL AND PULL AND REMOVE TBG HANGER. TBG DRAGGING 6,000-8,000# OVER STRING WT. SECURE WELL AND SDFN.
12/14/2004 07:00	HOLD SAFETY MEETING AND WRITE JSA. CHECK LOTO AND PRESSURE. SITP - 90; SICP - 50. BLOW WELL DOWN. PULL TBG. TBG LOOKED GOOD TO APPROX 2,000'. FROM APPROX 2,000' TO APPROX 3,700' TBG HAD SOME VISIBLE HOLES AND HEAVY SCALE. HAD TO CLEAN SCALE FROM TBG TO GET SLIPS AND ELEVATORS TO SET. FROM 3,700' TO 7,244' (CUT OFF POINT) TBG LOOKED BETTER WITH MODERATE SCALE AND NO VISIBLE HOLES. SPOT TRAILER WITH NEW TBG. PICK UP 4-11/16" OVERSOCKET, 3 JTS OF 2-7/8" TBG AND X-O SUB. STRAP, PICK UP AND TIH HOLE WITH NEW 2-3/8" TBG TO 1991' (TOP OF 7" LINER). SECURE WELL AND LOCATION AND SDFN
12/15/2004 07:00	HOLD SAFETY MEETING AND WRITE JSA. CHECK LOTO AND PRESSURE. SICP 50 PSI. SITP - 150 PSI. BLOW WELL DOWN TO FLOW BACK TANK. STRAP, PICK UP AND TIH WITH 2-3/8" TBG. TAG TOP OF FISH @ 3868.79'. WORK OVER SOCKET OVER FISH AND TOH. PICKED UP APPROX 8,000# OF WT. STRIP 1-1/4" TBG OUT OF 2-7/8" TBG AND LAY DOWN 1-1/4" TBG. LAYED DOWN 189 JTS (5698.94') OF 1-1/4" TBG. SECURE WELL AND LOCATION AND SDFN
12/16/2004 00:00	RIG DOWN BECAUSE OF WEATHER. ROADS SNOW PACKED AND ICY.
12/17/2004 07:00	HOLD SAFETY MEETING AND WRITE JSA. CHECK LOTO AND PRESSURE. BLOW WELL DOWN. SICP= 55 PSI. PICK UP OVERSHOT WITH 2-3/8" GRAPPLE AND TIH. WORK THROUGH SCALE FROM 2044' TO 2138'. TIH TO 3900'. STRAP, PICK UP AND TIH WITH 2-3/8" TBG. TO TOP OF FISH @ 7231'. WORK OVERSHOT OVER FISH AND TRY TO PULL SEAL ASSEMBLY. COULD NOT DETECT ANY MOVEMENT IN SEAL ASSEMBLY. MAX. PULL - 65,000#. RELEASE OVERSHOT AND TOH TO 4995'. (72 STDS). SECURE WELL AND LOCATION AND SDFWE.
12/20/2004 07:00	HOLD SAFETY MEETING AND WRITE JSA. CHECK LOTO AND CHECK PRESSURE. SITP - 500 PSI; SICP - 50 PSI. BLOW WELL DOWN TO FLOW BACK TANK. TOH AND LAY DONW OVERSHOT. PICK UP WASH PIPE, JARS AND INTENSIFIER AND TIH TO 4038'. UNLOAD WELL WITH AIR. TIH TO 6048' AND UNLOAD HOLE. HAD TO STAGE AIR AND WATER TO GET WELL TO UNLOAD. WHEN WELL UNLOADED IT FILLED 400 BBL FRAC TANK. SHUT OFF AIR AND SHUT IN WELL. SECURE WELL AND LOCATION AND SDFN
12/21/2004 08:30	HOLD SAFETY MEETING AND WRITE JSA. CHECK LOTO AND PRESSURE. WAIT ON WATER TRUCKS TO EMPTY FLOW BACK TANK AND SET ANOTHER FLOW BACK TANK. UNLOAD WELL @ 6048'. TIH TO 7241'. PICK UP POWER SWIVEL AND UNLOAD WELL @ 7241'. WASH OVER FISH FROM 7246' to 7275' . BLOW WELL CLEAN, SET BACK SWIVEL AND TOH TO 6644' . SECURE WELL AND LOCATION AND SDFN.
12/22/2004 07:00	HOLD SAFETY MEETING AND WRITE JSA. CHECK LOTO AND PRESSURE. SICP - START AND WARM UP EQUIPMENT. BLOW WELL DOWN TO FLOW BACK TANK. UNLOAD WELL @ 6613'. TIH TO 7246' (TOP OF FISH) AND WORK WASH PIPE OVER FISH. TAG FILL @ 7270' (5' OF FILL SINCE YESTERDAY). PICK UP POWER SWIVEL AND CLEAN OUT FROM 7270' TO 7298' (PACKER). BLOW WELL CLEAN AND TOH 932'. SECURE WELL AND LOCATION AND SDFN.

Daily Summary

API/UWI 300390792800	County RIO ARriba	State/Province NEW MEXICO	Surface Legal Location NMPM-31N-06W-33-N	N/S Dist. (ft) 850.1	N/S Ref. S	E/W Dist. (ft) 1839.9	E/W Ref. W
Ground Elevation (ft) 6500.00	Spud Date 06/15/1959	Rig Release Date 06/29/1959	Latitude (DMS) 36° 51' 4.032" N	Longitude (DMS) 107° 28' 13.4328" W			

Start Date	Ops This Rot
12/23/2004 07:00	HOLD SAFETY MEETING AND WRITE JSA. CHECK LOTO AND PRESSURE. BLOW WELL DOWN TO FLOW BACK TANK. TOH AND LAY DOWN WASH PIPE. PICK UP OVERSHOT AND TIH. LATCH ONTO FISH AND JAR ON SEAL ASSEMBLY. TURN TO RIGHT TO RELEASE IN CASE SEAL ASSEMBLY IS A LATCH DOWN ASSEMBLY. UNABLE TO RELEASE OR PULL SEAL ASSEMBLY. TRY TO GET OFF FISH. PICK UP SWIVEL AND TRY TO RELEASE OVERSHOT. WORK TBG UP APPROX 10'. HAD TO ROTATE TBG TO GET IT TO COME UP. IT APPEARS THAT WE HAVE SOMETHING ON TOP OF THE OVERSHOT. CAN WORK TBG UP AS LONG AS WE ROTATE. SECURE WELL AND LOCATION AND SDFWE.
12/28/2004 07:00	SAFETY MEETING AND WRITE JSA. CHECK LOTO AND PRESSURE. SICP - 280 PSI. BLOW WELL DOWN TO FLOW BACK TANK; START AND WARM UP EQUIPMENT. CHANGE OUT POWER TONGS AND WEIGHT INDICATOR. PICK UP POWER SWIVEL AND TRY TO UNLOAD WELL. UNABLE TO UNLOAD WELL. COULD NOT CIRC. WORK TBG UP APPROX 10' AND PULLED FREE WITH ONLY AND MINIMAL AMOUNT OF DRAG. SET SWIVEL BACK AND TOH WITH TBG. LAY DOWN FISH (25 JTS OF TBG AND SEAL ASSEMBLY). RUN OLD TBG THAT WAS IN DERRICK IN WELL AND LAY DOWN. SECURE WELL AND LOCATION AND SDFN.
12/29/2004 07:00	HOLD SAFETY MEETING AND WRITE JSA. CHECK LOTO AND PRESSURE. SICP - 50 PSI. BLOW WELL DOWN TO FLOW BACK TANK, START AND WARM UP EQUIPMENT. LAY DOWN 2-3/8" TBG. BREAK DOWN AND CHANGE OUT JARS. PICK UP PACKER PLUCKER, JARS AND TIH. UNLOAD WELL @ 3130'. TIH TO 5150 AND UNLOAD WELL. TIH TO 7230', PICK UP POWER SWIVEL AND UNLOAD WELL. SECURE WELL AND LOCATION AND SDFN.
12/30/2004 07:00	HOLD SAFETY MEETING AND WRITE JSA. CHECK LOTO AND PRESSURE. START AND WARM UP EQUIPMENT. UNLOAD WELL @ 7260'. WELL STILL MAKING WATER. APPROX 800 BBLS IN LAST 24 HRS. ATTEMPT TO LATCH INTO PACKER. DID NOT GET A POSITIVE LATCH. MILL PACKER AND PUSH DOWN HOLE. TOH; DID NOT RECOVER PACKER. SPEAR WAS UNSCREWED. SHOULD BE ABLE TO TIH WITH OVERSHOT AND RETRIEVE SPEAR AND PACKER. SPEAR WILL NOT GO THROUGH PACKER. SECURE WELL AND LOCATION AND SDFWE.
01/03/2005 07:00	HOLD SAFETY MEETING AND WRITE JSA. CHECK LOTO AND PRESSURE. SICP - 90 PSI. START AND WARM UP EQUIPMENT. PICK UP SHORT CATCH OVERSHOT AND TIH 7298' AND TAG PACKER. PUSH PACKER TO TOP OF LINER @ 7661' AND LATCH ONTO SPEAR. TOH. HAD TO WORK PACKER OUT FOR THE FIRST 36 STDS. LOST PACKER ON TRIP. LAY DOWN SPEAR AND PICK UP NEW SPEAR. TIH TO RETRIEVE PACKER. SECURE WELL AND LOCATION AND SDFN.
01/04/2005 09:30	SAFETY MEETING @ KEY ENERGY SERVICES FOR ALL HANDS. DROVE TO LOCATION. HOLD SAFETY MEETING AND WRITE JSA FOR EXPECTED OPERATIONS. CHECK LOTO AND PRESSURE. SICP - 0 PSI. START AND WARM UP EQUIPMENT. PICK UP SHORT CATCH OVERSHOT AND TIH TO 7298'. LATCH ONTO PACKER AND TOH. PACKER WAS DRAGGING TO TOP OF 7" CSG. BREAK DOWN AND LAY DOWN SPEAR. BOTTOM PACKER GUIDE ASSEMBLY WAS BROKE. LEFT APPROX 3/8 OF GUIDE ASSEMBLY IN WELL. PICK UP 5" CSG SCRAPER WITH BIT AND TIH. WILL DETERMINE IF JUNK IS ON TOP OF LINER OR IN LINER. SECURE WELL AND SDFN.
01/05/2005 00:00	RIG DID NOT OPERATE DUE TO ROAD AND WEATHER CONDITIONS. ROADS TO LOCATION ARE SNOWPACKED AND ICY. VERY SLICK.
01/06/2005 08:45	HOLD SAFETY MEETING AND WRITE JSA. CHECK LOTO AND PRESSURE. START AND WARM UP EQUIPMENT. PICK UP 2-3/8" TBG AND TIH TO 7980' WITH 5" CASING SCRAPER. TOH AND LAY DOWN SCRAPER. BREAK DOWN AND LOAD OUT FISHING TOOLS AND DRILL COLLARS. PICK UP RBP AND RTTP AND TIH. SET RBP @ 7654' AND PULL 1 STAND. SECURE WELL AND SDFN.
01/07/2005 07:00	HOLD SAFETY MEETING AND WRITE JSA. CHECK LOTO AND PRESSURE. START AND WARM UP EQUIPMENT. SET PACKER @ 7594' AND ATTEMPT TO TEST CSG TO 500 PSI. NO TEST.
01/10/2005 07:00	HOLD SAFETY MEETING AND WRITE JSA. CHECK LOTO AND PRESSURE. START AND WARM UP EQUIPMENT. SET PACKER @ 5410' AND PRESSURE TEST CSG FROM 5410' TO SURFACE TO 500 PSI FOR 30 MIN. GOOD TEST. UNSEAT PACKER AND TIH TO 5912'. TEST 7" CSG FROM 5912' TO 7654' TO 500 PSI FOR 30 MIN. GOOD TEST. TIH TO 7654' AND LATCH ONTO RBP. TOH AND LAY DOWN PACKER AND RBP. SECURE WELL AND LOCATION AND SDFN.
01/11/2005 07:00	HOLD SAFETY MEETING AND WRITE JSA. CHECK LOTO AND PRESSURE. CHANGE OUT CASING VALVES ON WELLHEAD. RIG UP WIRELINE TRUCK AND RUN AND SET CIBP @ 7939' KB. RIG DOWN WIRE LINE TRUCK. RIG UP TO DRIFT TBG. PICK UP EXPENDABLE CHECK, 1.78" PROFILE NIPPLE AND TIH TO 4084' DRIFTING TBG. UNLOAD WELL @ 4084'. TIH TO 6281' DRIFTING TBG. UNLOAD AND BLOW WELL @ 6281'. SECURE WELL AND LOCATION AND SDFN.
01/12/2005 07:00	HOLD SAFETY MEETING AND WRITE JSA. CHECK LOTO AND PRESSURE. SICP= 400 PSI. START AND WARM UP EQUIPMENT. UNLOAD WELL @ 6281' AND BLOW UNTIL FLOW BACK TANKS ARE FULL. RECOVER APPROX. 600 BBLS OF FLUID. SECURE WELL AND LOCATION AND SDFN.
01/13/2005 07:00	HOLD SAFETY MEETING AND WRITE JSA. CHECK LOTO AND PRESSURE. SICP - 350 PSI. UNLOAD AND BLOW WELL @ 6281'. TIH AND TAG CIBP @ 7939'. UNLOAD WELL AND BLOW CLEAN. RECOVER APPROX 350 BBLS OF FLUID.
01/14/2005 11:00	QUARTERLY SAFETY MEETING FOR ALL HANDS. DRIVE TO LOCATION. HOLD SAFETY MEETING AND WRITE JSA. CHECK LOTO AND PRESSURE. START AND WARM UP EQUIPMENT AND BLOW WELL DOWN TO FLOW BACK TANK. UNLOAD WELL @ 7930' AND BLOW WELL. LAY DOWN 1 JT OF TBG AND LAND TBG @ 7922.80' KB. TOP OF PROFILE NIPPLE @ 7921.07' KB.. TBG RAN AS FOLLOWS: EXPENDABLE CHECK (0.92'), 1.78" PROFILE NIPPLE (0.81'), 252 JTS 2-3/8", 4.7#, J-55, EUE TBG (7910.07'). RIG DOWN FLOOR AND TONGS. NIPPLE DOWN BOP AND SPOOLS. INSTALL WELLHEAD. SECURE WELL AND LOCATION AND SDFN.

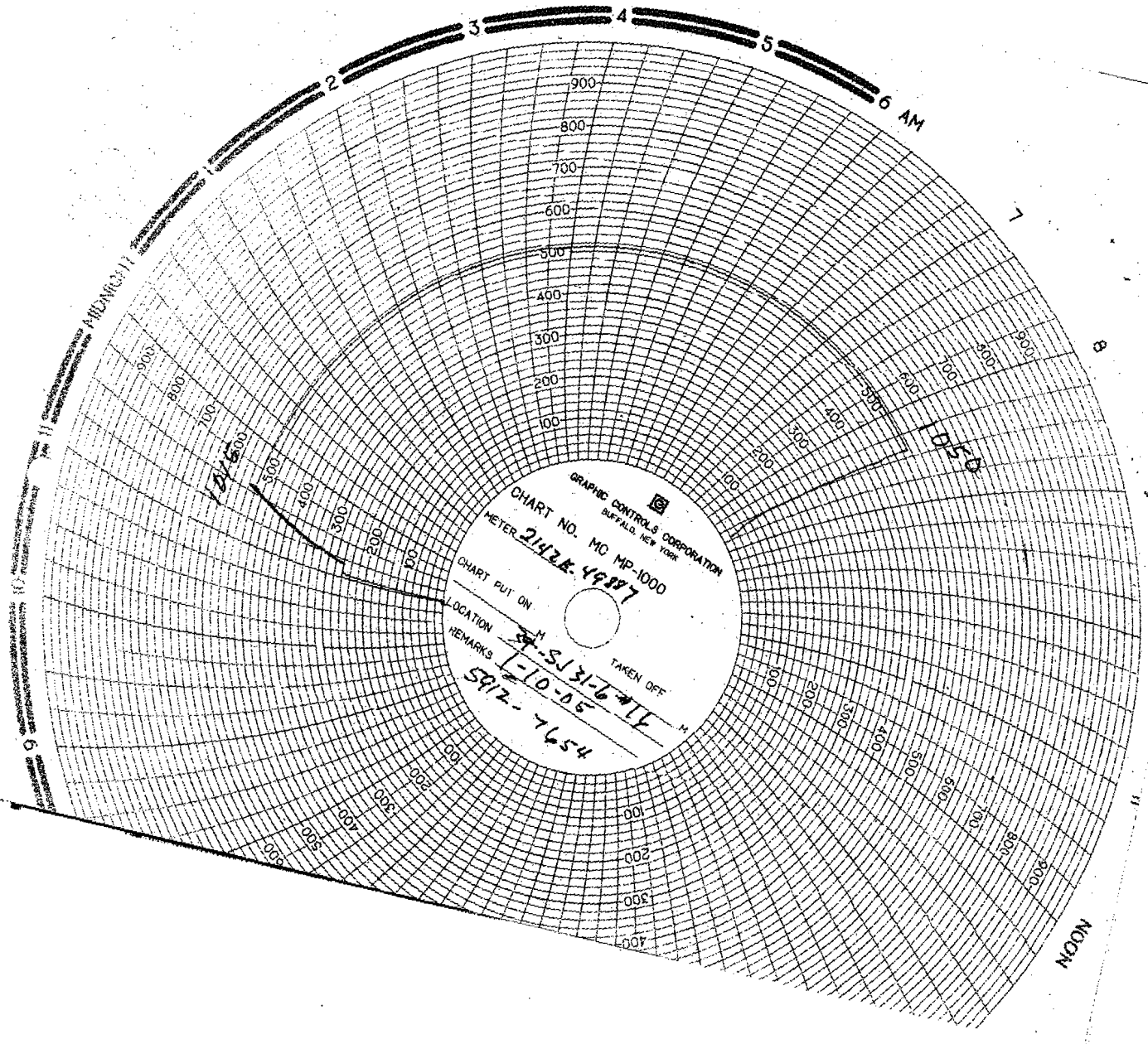
SAN JUAN 31 6 UNIT #016

Daily Summary

Downhole Comingle

API/UWI 300390792800	County RIO ARRIBA	State/Province NEW MEXICO	Surface Legal Location NMPM-31N-06W-33-N	N/S Dist. (ft) 850.1	N/S Ref. S	E/W Dist. (ft) 1839.9	E/W Ref. W
Ground Elevation (ft) 6500.00	Spud Date 06/15/1959	Rig Release Date 06/29/1959	Latitude (DMS) 36° 51' 4.032" N	Longitude (DMS) 107° 28' 13.4328" W			

Start Date	Ops This Rot
01/17/2005 07:00	HOLD SAFETY MEETING AND WRITE JSA. CHECK LOTO AND PRESSURE. SICP - 300 PSI. START AND WARM UP EQUIPMENT. HAD TROUBLE STARTING AIR COMP. UNLOAD WELL @ 7922'. BLOW WELL CLEAN, PUMP OUT EXP CHECK. BLOW WELL TO PURGE AIR. RIG DOWN AND PREPARE TO MOVE. RIG RELEASED @ 14:30.



GRAPHIC CONTROLS CORPORATION
BUFFALO, NEW YORK

CHART NO. MC MP-1000
METER 2142K-49887

CHART PUT ON

LOCATION

REMARKS

TAKEN OFF

ST-SJ 31-6-11
1-10-05
5912-7654

6 AM

NOON

2

PRINTED IN U.S.A.

3

4

5

6 PM

NOON

11

10

9

