

UNITED STATES
DEPARTMENT OF THE INTERIOR
BUREAU OF LAND MANAGEMENT

APPLICATION FOR PERMIT TO DRILL OR REENTER

FORM APPROVED
OMB No. 1004-0136
Expires November 30, 2000

5. Lease Serial No.
NMSF-078094

6. If Indian, Allottee or Tribe Name
N/A

7. If Unit or CA Agreement, Name and No.
N/A *27395*

8. Lease Name and Well No.
FULLERTON FED. #151

9. API Well No.
30-045- 31143

10. Field and Pool, or Exploratory
BASIN FRUITLAND COAL

11. Sec., T., R., M., or Blk. and Survey or Area
15-27n-11w NMPM

12. County or Parish
SAN JUAN

13. State
NM

1a. Type of Work: ☒ DRILL ☐ REENTER

1b. Type of Well: ☐ Oil Well ☒ Gas Well ☐ Other ☒ Single Zone ☐ Multiple Zone

2. Name of Operator
MARKWEST RESOURCES, INC.

3a. Address **155 INVERNESS DR., SUITE 200
ENGLEWOOD, CO. 80112** 3b. Phone No. (include area code)
(303) 290-8700

4. Location of Well (Report location clearly and in accordance with any State requirements*)

At surface **665' FSL & 715' FEL**
At proposed prod. zone **SAME**

14. Distance in miles and direction from nearest town or post office*
10 AIR MILES S OF BLOOMFIELD

15. Distance from proposed* location to nearest property or lease line, ft. (Also to nearest drig. unit line, if any) **665'**

18. Distance from proposed location* to nearest well, drilling, completed, applied for, on this lease, ft. **609'**

21. Elevations (Show whether DF, KDB, RT, GL, etc.)
6,346' GL

16. No. of Acres in lease
2,560

19. Proposed Depth
2,200'

22. Approximate date work will start*
DECEMBER 5, 2002

17. Spacing Unit dedicated to this well
320 ACRES (E2) 317-06

20. BLM/BIA Bond No. on file
KA6084 (BLM - NATIONWIDE)

23. Estimated duration
2 WEEKS

24. Attachments

The following, completed in accordance with the requirements of Onshore Oil and Gas Order No.1, shall be attached to this form:

- Well plat certified by a registered surveyor.
- A Drilling Plan.
- A Surface Use Plan (if the location is on National Forest System Lands, the SUPO shall be filed with the appropriate Forest Service Office).
- Bond to cover the operations unless covered by an existing bond on file (see Item 20 above).
- Operator certification.
- Such other site specific information and/or plans as may be required by the authorized officer.

Comments

**On site inspection with Roger Herrera.
Archaeology report CASA 02-31 filed 3-23-02.**

In file to FHS #41

DRILLING OPERATIONS AUTHORIZED ARE
SUBJECT TO COMPLIANCE WITH ATTACHED
"GENERAL REQUIREMENTS".

This action is subject to technical and
procedural review pursuant to 43 CFR 3165.3
and appeal pursuant to 43 CFR 3165.4

RECEIVED
2002 JUL 10 PM 3:23
CFO PATRICKSON, NM

cc:BLM (&OCD), Pippin, Stowe

25. Signature *[Signature]* Name (Printed/Typed) **BRIAN WOOD** Date **7-5-02**

Title **CONSULTANT** PHONE: 505 466-8120 FAX: 505 466-9682

Approved by (Signature) *[Signature]* Name (Printed/Typed) **WAYNE TOWNSEND** Date **11-18-02**

Title **Ret. Eng.** Office **FFO**

Application approval does not warrant or certify the the applicant holds legal or equitable title to those rights in the subject lease which would entitle the applicant to conduct operations thereon.

Conditions of approval, if any, are attached.

Title 18 U.S.C. Section 1001 and Title 43 U.S.C. Section 1212, make it a crime for any person knowingly and willfully to make to any department or agency of the United States any false, fictitious or fraudulent statements or representations as to any matter within its jurisdiction.

NMOCD

DISTRICT I
1625 N. French Dr., Hobbs, N.M. 88240

DISTRICT II
811 South First, Artesia, N.M. 88210

DISTRICT III
1000 Rio Brazos Rd., Aztec, N.M. 87410

DISTRICT IV
2040 South Pacheco, Santa Fe, NM 87505

State of New Mexico
Energy, Minerals & Natural Resources Department

Form C-102
Revised August 15, 2000

Submit to Appropriate District Office
State Lease - 4 Copies
Fee Lease - 3 Copies

OIL CONSERVATION DIVISION
2040 South Pacheco
Santa Fe, NM 87505

☐ AMENDED REPORT

WELL LOCATION AND ACREAGE DEDICATION PLAT

*API Number 30-045-31143		*Pool Code 71629	*Pool Name BASIN FRUITLAND COAL
*Property Code 27395	*Property Name FULLERTON FEDERAL		*Well Number 151
*OGRID No. 193195	*Operator Name MARKWEST RESOURCES, INC.		*Elevation 6346'

¹⁰ Surface Location

UL or lot no.	Section	Township	Range	Lot Idn	Feet from the	North/South line	Feet from the	East/West line	County
. P	. 15	. 27-N	. 11-W		. 665'	. SOUTH	. 715'	. EAST	SAN JUAN

¹¹ Bottom Hole Location If Different From Surface

UL or lot no.	Section	Township	Range	Lot Idn	Feet from the	North/South line	Feet from the	East/West line	County
**Dedicated Acres 320		**Joint or Infill		**Consolidation Code		**Order No.			

NO ALLOWABLE WILL BE ASSIGNED TO THIS COMPLETION UNTIL ALL INTERESTS HAVE BEEN CONSOLIDATED
OR A NON-STANDARD UNIT HAS BEEN APPROVED BY THE DIVISION

16		17 OPERATOR CERTIFICATION I hereby certify that the information contained herein is true and complete to the best of my knowledge and belief. Signature Printed Name BRIAN WOOD Title CONSULTANT Date JULY 6, 2002

LAT. 36°34'11" N
LONG. 107°59'05" W

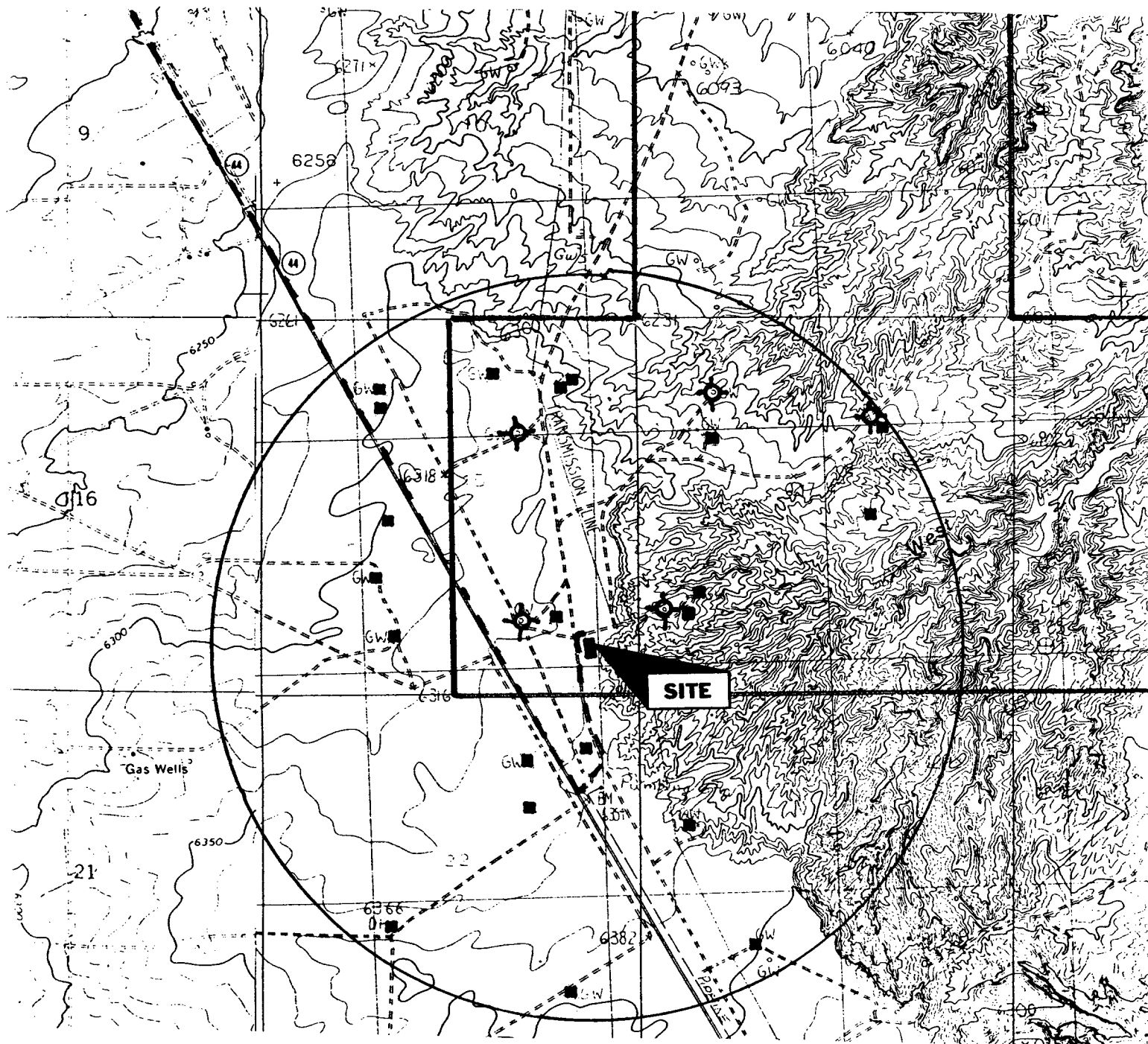
665' 715' 603' 665' 13.2' OFST. CALC. COR.

S 89-51 W
5273.4' (R)

00-00-00 E 10-00-00 636.6'

MarkWest Resources, Inc.
 Fullerton Federal 151
 665' FSL & 715' FEL
 Sec. 15, T. 27 N., R. 11 W.
 San Juan County, New Mexico

PAGE 10



PROPOSED WELL: ■

EXISTING WELL: ■

P & A WELL: ⊗

EXISTING ROAD: - - -

LEASE: ┌

MarkWest Resources, Inc.
Fullerton Federal 151
665' FSL & 715' FEL
Sec. 15, T. 27 N., R. 11 W.
San Juan County, New Mexico

PAGE 1

Drilling Program

1. ESTIMATED FORMATION TOPS

<u>Formation Name</u>	<u>GL Depth</u>	<u>KB Depth</u>	<u>Elevation</u>
Nacimiento Fm	000'	5'	+6,346'
Ojo Alamo Ss	997'	1,002'	+5,349'
Kirtland Sh	1,091'	1,096'	+5,255'
Fruitland Coal	1,589'	1,594'	+4,757'
Pictured Cliffs Ss	2,072'	2,077'	+4,274'
Total Depth (TD)*	2,200'	2,205'	+4,146'

* all elevations reflect the ungraded ground level of 6,346'

2. NOTABLE ZONES

Gas or Oil Zones

Fruitland
Pictured Cliffs

Water Zones

Nacimiento
Ojo Alamo
Kirtland
Fruitland

Coal Zone

Fruitland

Water zones will be protected with casing, cement, and weighted mud. Fresh water found while drilling will be recorded. Oil or gas shows will be tested for commercial potential based on the geologist's recommendations.

3. PRESSURE CONTROL

Maximum expected pressure is ~200 psi. The drilling contract has not yet been awarded, thus the exact BOP model to be used is not yet known. A typical 8" double ram 2,000 psi model is on PAGE 3.

MarkWest Resources, Inc.
Fullerton Federal 151
665' FSL & 715' FEL
Sec. 15, T. 27 N., R. 11 W.
San Juan County, New Mexico

PAGE 2

BOP equipment and all accessories will meet or exceed BLM requirements in 43 CFR Part 3160 for a 2000 psi system. A 2000 psi double ram hydraulic BOP will be used. Accumulator system capacity will be sufficient to close all BOPE with a 50% safety factor. Fill, kill, and choke manifold lines will be 2" screw connections. Accessories will include upper and lower Kelly cocks with handles, stabbing valve to fit drill pipe on floor at all times, string float at bit, 2000 psi choke manifold with 2" adjustable choke with screw connections, and pressure gauge. BOPs will be tested every 24 hours. Tests will be recorded on an I. A. D. C. log.

4. CASING & CEMENT

<u>Hole Size</u>	<u>O. D.</u>	<u>Weight (lb/ft)</u>	<u>Grade</u>	<u>Age</u>	<u>Connection</u>	<u>GL Setting Depth</u>
11"	8-5/8"	24	K-55	New	ST & C	160'
6-1/4"	4-1/2"	10.5	K-55	New	ST & C	2,200'

Surface casing will be cemented to the surface with ≈ 118 cubic feet (≈ 100 sacks) Class B + 1/4 lb/sack cello-flake + 2% CaCl_2 . Yield = 1.18 cubic feet per sack. Weight = 15.6 pounds per gallon. Volume = 100% excess. A guide shoe and insert float will be used with 3 centralizers. W. O. C. = 12 hours. Surface casing will be tested to 500 psi for 30 minutes.

Production casing will be cemented to the surface. Total cement = 382 cubic feet. Volume is calculated at 70% excess. If cement does not circulate to surface, then a temperature survey will be run to determine the actual cement top as needed. W. O. C. = 12 hours. Test to 3,800 psi.

Lead cement = 305 cubic feet (≈ 148 sacks) Class B cement with 2% SM, 3 pounds per sack gilsonite + 1/4 pound per sack cello-flake. Yield = 2.06 cubic feet per sack. Weight = 12.5 pounds per gallon.

Tail cement = 77 cubic feet (≈ 50 sacks) Class B + 4% gel + 1/4#/sack cello-flake + 2% CaCl_2 . Yield = 1.55 cubic feet per sack. Weight = 14.5 #/gallon.