

State of New Mexico  
Energy, Minerals & Natural Resources

Form C-101  
Revised March 17, 1999

District I  
1625 N. French Dr., Hobbs, NM 88240  
District II  
811 S. 1st Street, Artesia, NM 88210  
District III  
1000 Rio Brazos Rd., Aztec, NM 87410  
District IV  
2040 South Pacheco, Santa Fe, NM 87505

Oil Conservation Division  
2040 South Pacheco  
Santa Fe, NM 87505

Submit to appropriate District Office  
State Lease - 6 Copies  
Fee Lease - 5 Copies

☐ AMENDED REPORT

**APPLICATION FOR PERMIT TO DRILL, RE-ENTER, DEEPEN, PLUGBACK, OR ADD A ZONE**

<sup>1</sup> Operator Name and Address Energen Resources Corporation 2198 Bloomfield Highway Farmington, New Mexico 87401		<sup>2</sup> OGRID Number 162928
<sup>4</sup> Property Code 21197	<sup>5</sup> Property Name CULPEPPER MARTIN	<sup>3</sup> API Number 30-045-31200
		<sup>6</sup> Well No. 3N

<sup>7</sup> Surface Location

UL or lot no.	Section	Township	Range	Lot. Idn	Feet from the	North/South Line	Feet from the	East/West line	County
D	7	31N	12W		1135	North	660	WEST	SAN JUAN

<sup>8</sup> Proposed Bottom Hole Location If Different From Surface

UL or lot no.	Section	Township	Range	Lot. Idn	Feet from the	North/South Line	Feet from the	East/West line	County
<sup>9</sup> Proposed Pool 1 BLANCO MESAVERDE/BASIN DAKOTA					<sup>10</sup> Proposed Pool 2				

<sup>11</sup> Work Type Code DRILL	<sup>12</sup> Well Type Code GAS WELL	<sup>13</sup> Cable/Rotary ROTARY	<sup>14</sup> Lease Type Code FEE	<sup>15</sup> Ground Level Elevation 5817'
<sup>16</sup> Multiple YES	<sup>17</sup> Proposed Depth 6909'	<sup>18</sup> Formation MV/DK	<sup>19</sup> Contractor	<sup>20</sup> Spud Date 2/03

<sup>21</sup> Proposed Casing and Cement Program

Hole Size	Casing Size	Casing weight/foot	Setting Depth	Sacks of Cement	Estimated TOC
12-1/4"	9-5/8"	32.3#	200'	110	CIRC. TO SURFACE
8-3/4"	7"	23#	3904'	455	CIRC. TO SURFACE
6-1/4"	4 1/2"	11.6#	3754' - 6909'	385	CIRC TO LINER TOP

<sup>22</sup> Describe the proposed program. If this application is to DEEPEN or PLUG BACK, give the data on the present productive zone and proposed new productive zone. Describe the blowout prevention program, if any. Use additional sheets if necessary.

An 11" 2000# minimum double gate BOP stack will be used with a 2" 2000# choke manifold.  
The Mesavade will be slectively perforated and sand water fractured.  
This gas is dedicated.

<sup>23</sup> I hereby certify that the information given above is true and complete to the best of my knowledge and belief.

Signature: *Doug Thomas*

Printed name: Doug Thomas

Title: Drilling/Completion Foreman

Date: 12/10/02

Phone: 505-325-6800

OIL CONSERVATION DIVISION

Approved by: *Pat Hays*

Title: DEPUTY OIL & GAS INSPECTOR, DIST. 33

Approval Date: DEC 12 2002

Expiration Date: DEC 12 2003

Conditions of Approval:

Attached ☐

District I  
PO Box 1980, Hobbs, NM 88241-1980

District II  
PO Drawer DD, Artesia, NM 88211-0719

District III  
1000 Rio Brazos Rd., Aztec, NM 87410

District IV  
PO Box 2088, Santa Fe, NM 87504-2088

State of New Mexico  
Energy, Minerals & Natural Resources Department

OIL CONSERVATION DIVISION  
PO Box 2088  
Santa Fe, NM 87504-2088

Form C-102  
Revised February 21, 1994  
Instructions on back  
Submit to Appropriate District Office  
State Lease - 4 Copies  
Fee Lease - 3 Copies

☐ AMENDED REPORT

WELL LOCATION AND ACREAGE DEDICATION PLAT

*API Number <b>30-045-31200</b>		*Pool Code <b>72319/71599</b>	*Pool Name <b>Blanco Mesaverde/Basin Dakota</b>
*Property Code <b>21197</b>	*Property Name <b>CULPEPPER MARTIN</b>		*Well Number <b>3N</b>
*GRID No. <b>162928</b>	*Operator Name <b>ENERGEN RESOURCES CORPORATION</b>		*Elevation <b>5817</b>

<sup>10</sup> Surface Location

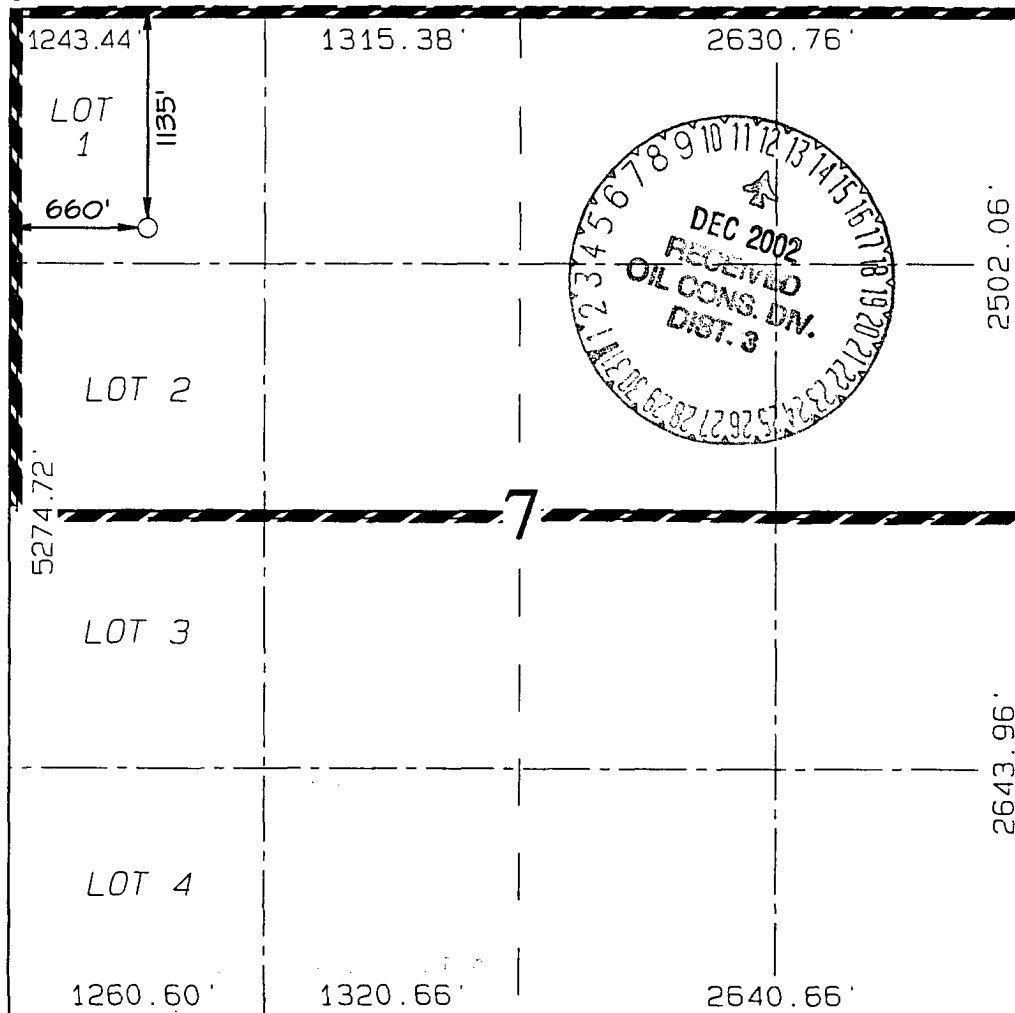
UL or lot no.	Section	Township	Range	Lot Idn	Feet from the	North/South line	Feet from the	East/West line	County
<b>D</b>	<b>7</b>	<b>31N</b>	<b>12W</b>		<b>1135</b>	<b>NORTH</b>	<b>660</b>	<b>WEST</b>	<b>SAN JUAN</b>

<sup>11</sup> Bottom Hole Location If Different From Surface

UL or lot no.	Section	Township	Range	Lot Idn	Feet from the	North/South line	Feet from the	East/West line	County
<sup>12</sup> Dedicated Acres <b>315.83 Acres - (N/2)</b>					<sup>13</sup> Joint or Infill	<sup>14</sup> Consolidation Code	<sup>15</sup> Order No.		

NO ALLOWABLE WILL BE ASSIGNED TO THIS COMPLETION UNTIL ALL INTERESTS HAVE BEEN CONSOLIDATED  
OR A NON-STANDARD UNIT HAS BEEN APPROVED BY THE DIVISION

<sup>16</sup>



<sup>17</sup> OPERATOR CERTIFICATION

I hereby certify that the information contained herein is true and complete to the best of my knowledge and belief

Signature

Don Graham

Printed Name

Production Superintendent

Title

Date

<sup>18</sup> SURVEYOR CERTIFICATION

I hereby certify that the well location shown on this plat was plotted from field notes of actual surveys made by me or under my supervision, and that the same is true and correct to the best of my belief.

Survey Date: SEPTEMBER 12, 2002

Signature and Seal of Professional Surveyor



**JASON C. EDWARDS**

Certificate Number

15269

ENERGEN RESOURCES CORPORATION CULPEPPER MARTIN #38N

1135' FNL & 660' FWL, SECTION 7, T31N, R12W, N.M.P.M.  
SAN JUAN COUNTY, NEW MEXICO

