

UNITED STATES
DEPARTMENT OF THE INTERIOR
BUREAU OF LAND MANAGEMENT

APPLICATION FOR PERMIT TO DRILL, DEEPEN, OR PLUG BACK

1a. Type of Work DRILL	5. Lease Number NMSF078138
1b. Type of Well GAS	Unit Reporting Number RECEIVED
2. Operator BURLINGTON RESOURCES Oil & Gas Company	6. If Indian, All. or Tribe NONE
3. Address & Phone No. of Operator PO Box 4289, Farmington, NM 87499 (505) 326-9700	7. Unit Agreement Name
4. Location of Well 1445' FNL, 1130' FEL Latitude 36° 47.2107'N, Longitude 107° 59.4223'W	8. Farm or Lease Name Morris
	9. Well Number 103
	10. Field, Pool, Wildcat Basin Fruitland Coal
	11. Sec., Twn, Rge, Mer. (NMPM) H Sec. 28, T-30-N, R-11-W API # 30-045-32834
14. Distance in Miles from Nearest Town 6 miles from int. hwy 550 & hwy 64	12. County San Juan
	13. State NM
15. Distance from Proposed Location to Nearest Property or Lease Line 1130'	
16. Acres in Lease	17. Acres Assigned to Well 320.08 319.88 E/2
18. Distance from Proposed Location to Nearest Well, Drig, Compl, or Applied for on this Lease 76'	
19. Proposed Depth 2565'	20. Rotary or Cable Tools Rotary
21. Elevations (DF, FT, GR, Etc.) 6012'	22. Approx. Date Work will Start
23. Proposed Casing and Cementing Program See Operations Plan attached	
24. Authorized by: <u>Tammy Jones</u> Regulatory/Compliance Specialist	<u>12-20-04</u> Date

PERMIT NO.

APPROVAL DATE

APPROVED BY

TITLE

DATE

Archaeological Report attached

Threatened and Endangered Species Report attached

NOTE: This format is issued in lieu of U.S. BLM Form 3160-3

Title 18 U.S.C. Section 1001, makes it a crime for any person knowingly and willfully to make to any department or agency of the United States any false, fictitious or fraudulent statements or presentations as to any matter within its jurisdiction.

DRILLING OPERATIONS AUTHORIZED ARE
SUBJECT TO COMPLIANCE WITH ATTACHED
"GENERAL REQUIREMENTS".

NMOCGD

This action is subject to technical and
procedural review pursuant to 43 CFR 3165.3
and appeal pursuant to 43 CFR 3165.4

DISTRICT I
1625 N. French Dr., Hobbs, N.M. 88240

State of New Mexico
Energy, Minerals & Natural Resources Department

Form C-102
Revised August 15, 2000

DISTRICT II
811 South First, Artesia, N.M. 88210

DISTRICT III
1000 Rio Brazos Rd., Aztec, N.M. 87410

DISTRICT IV
2040 South Pacheco, Santa Fe, NM 87505

OIL CONSERVATION DIVISION
2040 South Pacheco
Santa Fe, NM 87505

Submit to Appropriate District Office
State Lease - 4 Copies
Fee Lease - 3 Copies

☐ AMENDED REPORT

WELL LOCATION AND ACREAGE DEDICATION PLAT

¹ API Number 30-045-32834	² Pool Code 71629	³ Pool Name Basin Fruitland Coal
⁴ Property Code 7324	⁵ Property Name MORRIS	⁶ Well Number 103
⁷ GRID No. 14538	⁸ Operator Name BURLINGTON RESOURCES OIL AND GAS COMPANY LP	⁹ Elevation 6012'

¹⁰ Surface Location

UL or lot no.	Section	Township	Range	Lot Idn	Feet from the	North/South line	Feet from the	East/West line	County
H	28	30-N	11-W		1445'	NORTH	1130'	EAST	SAN JUAN

¹¹ Bottom Hole Location If Different From Surface

UL or lot no.	Section	Township	Range	Lot Idn	Feet from the	North/South line	Feet from the	East/West line	County
¹² Dedicated Acres E/319-88 32008					¹³ Joint or Infill		¹⁴ Consolidation Code		¹⁵ Order No.

NO ALLOWABLE WILL BE ASSIGNED TO THIS COMPLETION UNTIL ALL INTERESTS HAVE BEEN CONSOLIDATED
OR A NON-STANDARD UNIT HAS BEEN APPROVED BY THE DIVISION

16		S 87-59-54 W 2593.58'		17 OPERATOR CERTIFICATION	
LOT 3		LOT 2		I hereby certify that the information contained herein is true and complete to the best of my knowledge and belief.	
LAT: 36°47.2107' N. LONG: 107°59.4223' W. NAD 1927		LOT 1		Signature Tammy Jones	
LOT 4		LOT 6		Printed Name Tammy Jones	
LOT 7		LOT 8		Title Regulatory Specialist	
USA SF-078138		LOT 9		Date 1-13-05	
LOT 10		LOT 11		18 SURVEYOR CERTIFICATION	
LOT 12		LOT 13		I hereby certify that the well location shown on this plat was plotted from field notes of actual surveys made by me or under my supervision, and that the same is true and correct to the best of my belief.	
LOT 14		LOT 15		Date of Survey 11-30-04	
				Signature and Seal of Licensed Surveyor: C. L. W. Russell	
				Certificate Number 15703	

Office

Energy, Minerals and Natural Resources

May 27, 2004

District I

1625 N. French Dr., Hobbs, NM 88240

District II

1301 W. Grand Ave., Artesia, NM 88210

District III

1000 Rio Brazos Rd., Aztec, NM 87410

District IV

1220 S. St. Francis Dr., Santa Fe, NM 87505

OIL CONSERVATION DIVISION

1220 South St. Francis Dr.

Santa Fe, NM 87505

WELL API NO.

30-045-

5. Indicate Type of Lease

STATE ☐FEE ☐

6. State Oil & Gas Lease No.

NMSF078138

7. Lease Name or Unit Agreement Name

Morris

8. Well Number

103

9. OGRID Number

14538

10. Pool name or Wildcat

Basin Fruitland Coal

SUNDRY NOTICES AND REPORTS ON WELLS

(DO NOT USE THIS FORM FOR PROPOSALS TO DRILL OR TO DEEPEN OR PLUG BACK TO A DIFFERENT RESERVOIR. USE "APPLICATION FOR PERMIT" (FORM C-101) FOR SUCH PROPOSALS.)

1. Type of Well:

Oil Well ☐Gas Well ☒

Other

2. Name of Operator

BURLINGTON RESOURCES OIL & GAS COMPANY LP

3. Address of Operator

3401 E. 30TH STREET, FARMINGTON, NM 87402

4. Well Location

Unit Letter H : 1445 feet from the North line and 1130 feet from the East lineSection 28 Township 30N Range 11W NMPM County San Juan

11. Elevation (Show whether DR, RKB, RT, GR, etc.)

6012' GR

Pit or Below-grade Tank Application

☒ or Closure ☐Pit type New Drill Depth to Groundwater >100' Distance from nearest fresh water well>1000' Distance from nearest surface water<1000'

Pit Liner Thickness:

12

mil

Below-Grade Tank:

Volume

bbls;

Construction Material

12. Check Appropriate Box to Indicate Nature of Notice, Report or Other Data

NOTICE OF INTENTION TO:

PERFORM REMEDIAL WORK ☐TEMPORARILY ABANDON ☐PULL OR ALTER CASING ☐PLUG AND ABANDON ☐CHANGE PLANS ☐MULTIPLE COMPL ☐

SUBSEQUENT REPORT OF:

REMEDIAL WORK ☐COMMENCE DRILLING OPNS. ☐CASING/CEMENT JOB ☐ALTERING CASING ☐P AND A ☐

OTHER:

New Drill Pit ☒OTHER: ☐

13. Describe proposed or completed operations. (Clearly state all pertinent details, and give pertinent dates, including estimated date of starting any proposed work). SEE RULE 1103. For Multiple Completions: Attach wellbore diagram of proposed completion or recompletion.

Burlington Resources proposes to construct a new drilling pit and an associated vent/flare pit. Based on Burlington's interpretation of the Ecosphere's risk ranking criteria, the new drilling pit will be a lined pit as detailed in Burlington's Revised Drilling / Workover Pit Construction / Operation Procedures dated November 11, 2004 on file at the NMOCDD office. A portion of the vent/flare pit will be designed to manage fluids and that portion will be lined as per the risk ranking criteria. Burlington Resources anticipates closing these pits according to the Drilling / Workover Pit Closure Procedure dated August 2, 2004 on file at the NMOCDD office.

I hereby certify that the information above is true and complete to the best of my knowledge and belief. I further certify that any pit or below-grade tank has been/will be constructed or closed according to NMOCDD guidelines ☐, a general permit ☒ or an (attached) alternative OCD-approved plan ☐.

SIGNATURE Tammy Jones TITLE Regulatory Specialist DATE 12/20/2004

Type or print name

Tammy Jones

E-mail address:

tjones3@br-inc.com

Telephone No.

505-326-9700

For State Use Only

DEPUTY OIL & GAS INSPECTOR, DIST. 02

APPROVED BY

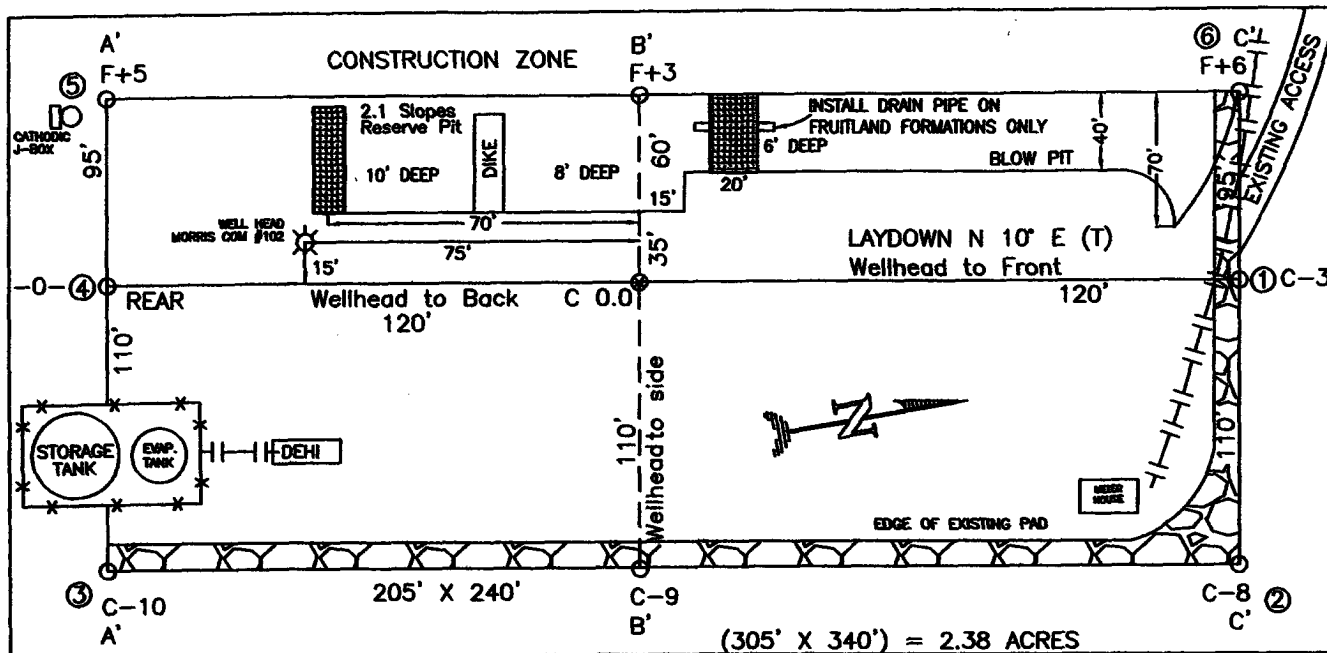
TITLE

DATE

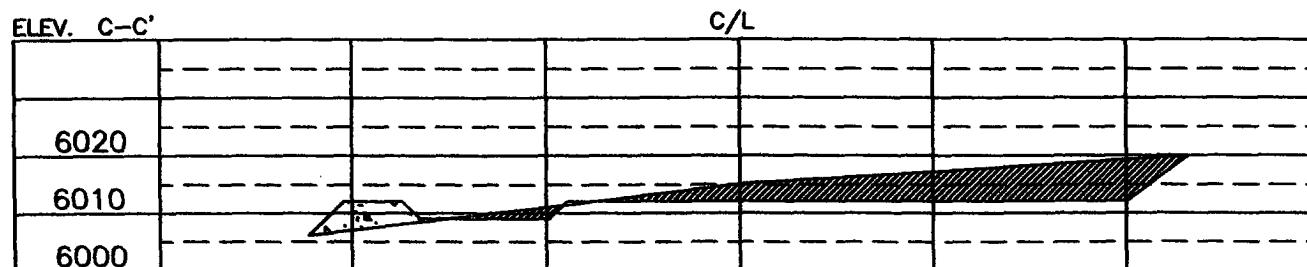
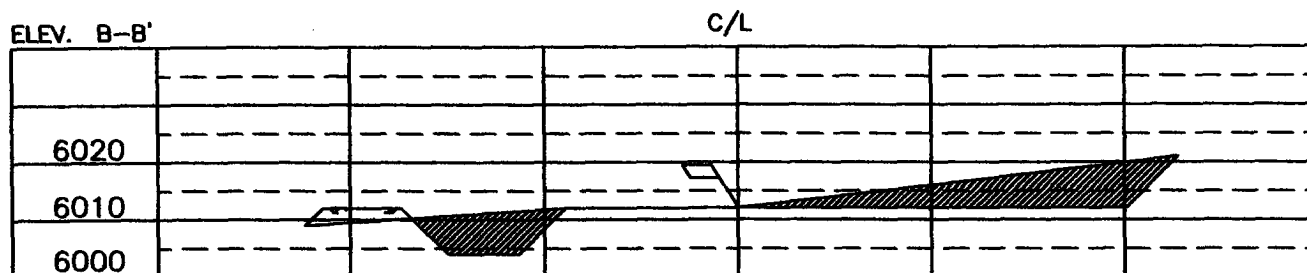
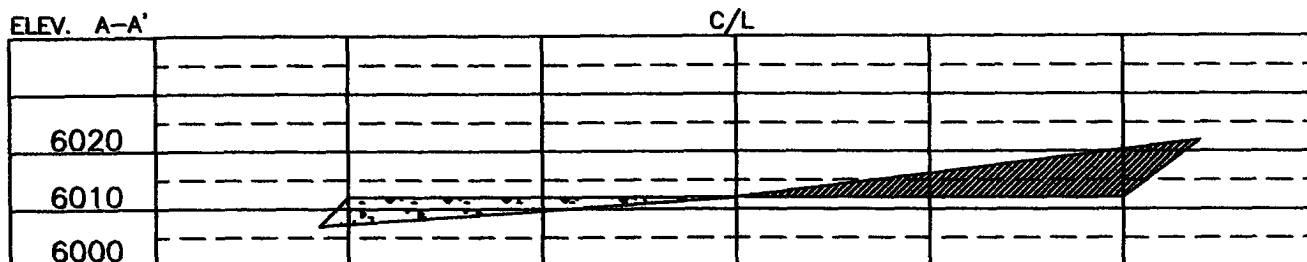
Conditions of Approval (if any):

FEB 22 2005

BURLINGTON RESOURCES OIL & GAS COMPANY LP
MORRIS 103, 1445' FNL 1130' FEL
SECTION 28, T-30-N, R-11-W, N.M.P.M., SAN JUAN COUNTY, NEW MEXICO
GROUND ELEVATION: 6012', DATE: NOVEMBER 4, 2004



RESERVE PIT DIKE: TO BE 8' ABOVE DEEP SIDE (OVERFLOW - 3' WIDE AND 1' ABOVE SHALLOW SIDE).
 BLOW PIT: OVERFLOW PIPE HALFWAY BETWEEN TOP AND BOTTOM AND TO EXTEND OVER PLASTIC LINER AND INTO BLOW PIT.



NOTE: VECTOR SURVEYS IS NOT LIABLE FOR UNDERGROUND UTILITIES OR PIPELINES.
 CONTRACTOR SHOULD CALL ONE-CALL FOR LOCATION OF ANY MARKED OR UNMARKED BURIED PIPELINES OR CABLES
 ON WELL PAD AND OR ACCESS ROAD AT LEAST TWO (2) WORKING DAYS PRIOR TO CONSTRUCTION.

OPERATIONS PLAN

Well Name: MORRIS 103
Location: 1445' FNL & 1130' FEL, Section Sec 28-T30N-R11W
San Juan County, New Mexico
Formation: Basin Fruitland Coal
Elevation: 6012' GL

<u>Formation Tops:</u>	<u>Top</u>	<u>Bottom</u>	<u>Contents</u>
Surface	San Jose	975'	
Ojo Alamo	975'	1082'	aquifer
Kirtland	1082'	2146'	gas
Fruitland Coal	2146'	2360'	gas
B/Fruitland Coal	2360'	2365'	gas
Pictured Cliffs	2365'		gas
Total Depth:	2565'		gas

Logging Program:

Open hole - none
Cased hole - none

Coring Program: None

Mud Program:

<u>Interval</u>	<u>Type</u>	<u>Weight</u>	<u>Vis.</u>	<u>Fluid Loss</u>
0 - 120'	Spud	8.4 - 9.0	40 - 50	no control
120 - 2565'	FW/LSND	8.4 - 9.0	32 - 45	no control

Casing Program (as listed, the equivalent, or better):

<u>Hole Size</u>	<u>Depth Interval</u>	<u>Csq.Size</u>	<u>Wt.</u>	<u>Grade</u>
8 3/4"	0' - 120' <i>air/air-mist</i>	7"	20.0#	J-55
6 1/4"	0' - 2565'	4 1/2"	10.5#	J-55

Tubing Program:

<u>Depth Interval</u>	<u>Csq.Size</u>	<u>Wt.</u>	<u>Grade</u>
0' - 2565'	2 3/8"	4.7#	J-55

Float Equipment:

7" surface casing -
Guide shoe. Centralizers will be run in accordance with Onshore Order #2.

4 1/2" production casing -
Float shoe on bottom. Standard centralizers run every third joint above shoe to the base of the Ojo Alamo @ 1082'. Two turbolizing type centralizers - one below and one into the base of the Ojo Alamo @ 1082'. Standard centralizers thereafter every fourth joint up to the base of the surface pipe.

Wellhead Equipment:

7" x 4 1/2" x 2 3/8" 2000 psi screw on independent wellhead.

Cementing:

7" surface casing pre-set drilled -

cement with 34 sacks Type I, II cement with 20% flyash mixed at 14.5 ppg, 1.61 cu ft per sack yield. (Bring cement to surface). Wait on cement for 24 hours for pre-set holes before pressure testing or drilling out from under surface.

7" surface casing conventionally drilled -

cement with 42 sacks Type III cement with 0.25 pps Celloflake, 3% calcium chloride. (54 cu ft - 200% excess, bring cement to surface). Wait on cement appropriate time until cement achieves 250 psi compressive strength at 60 degrees F. prior to nipple up of BOPE. Wait on cement for 8 hours for conventionally set holes before pressure testing or drilling out from under surface.

Saw tooth guide shoe on bottom. Bowspring centralizers will be run in accordance with Onshore Order #2.

4 1/2" Production casing -

Lead w/129 sacks Premium Lite cement w/3% calcium chloride, 0.25 pps celloflake, 5 pps LCM-1, 0.4% fluid loss, 0.4% sodium metasilicate. Tail w/90 sacks Type III cement w/1% calcium chloride, 0.25 pps celloflake, and 0.2% fluid loss (394 cu. ft. of slurry, 50% excess to circulate to surface).

Note: If open hole logs are run, cement volumes will be based on 25% excess over caliper volumes.

BOP and Tests:

Surface to TD -

11" 2000 psi minimum double gate BOP stack (Reference Figure #1). Prior to drilling out surface casing, test BOP and casing to 600 psi for 30 minutes.

Completion -

6" 2000 psi (minimum) double gate BOP stack (Reference Figure #2). Prior to completion operations, test BOP and casing to 2000 psi / 15 minutes.

From surface to TD -

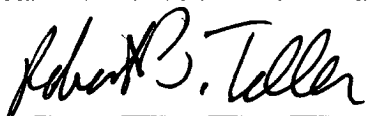
choke manifold (Reference Figure #3)

BOP and Tests: Continued

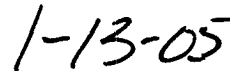
Pipe rams will be actuated at least once each day and blind rams actuated once each trip to test proper functioning. An upper kelly cock valve with handle and drill string safety valves to fit each drill string will be maintained and available on the rig floor.

Additional Information:

- The Fruitland Coal formation will be completed.
- Anticipated pore pressures for the Fruitland Coal is 500 psi.
- This gas is dedicated.
- The east of Section 28 is dedicated to the Fruitland Coal formation.



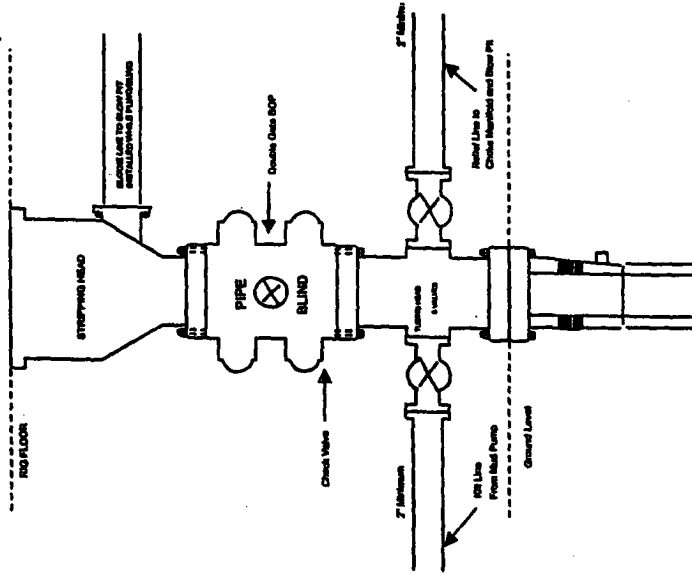
Drilling Engineer



Date

BURLINGTON RESOURCES

Completion/Workover Rig BOP Configuration 2,000 psi System

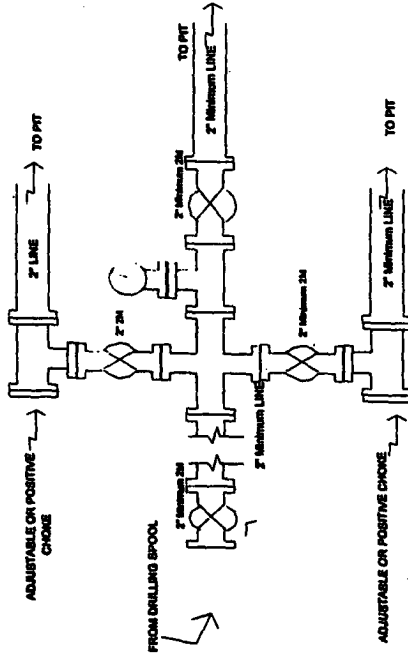


Minimum BOP Installation for all Completion/Workover Operations. 7-1/16" bore, 2000 psi minimum working pressure double gate BOP to be equipped with blind and pipe rams. A stripping head to be installed on the top of the BOP. All BOP equipment is 2000 psi working pressure or greater excluding 500 psi stripping head.

Figure #2

BURLINGTON RESOURCES

Drilling Rig Choke Manifold Configuration 2000 psi System

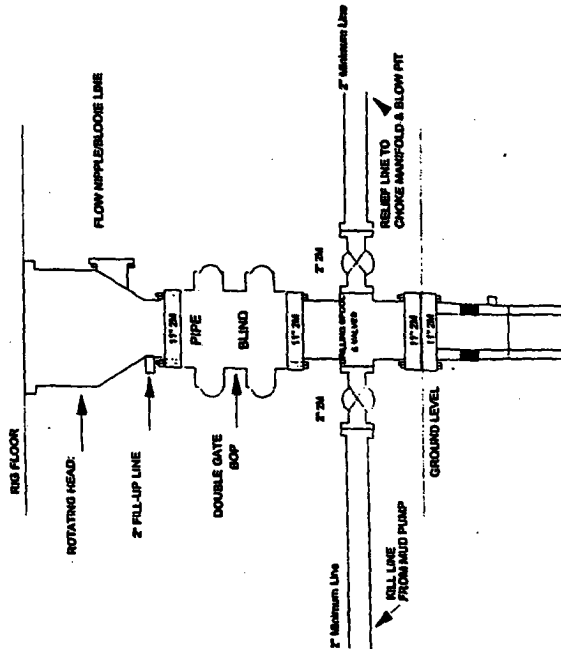


Choke manifold Installation from Surface Casing Point to Total Depth. 2,000psi working pressure equipment with two chokes.

Figure #3

Burlington Resources

Drilling Rig 2000 psi System



BOP Installation from Surface Casing Point to Total Depth. 11" Bore 10" Nominal, 2000 psi working pressure double gate BOP to be equipped with blind rams and pipe rams. A 500 psi rotating head on top of ram preventers. All BOP equipment is 2,000 psi working pressure

Figure #1