

UNITED STATES  
DEPARTMENT OF THE INTERIOR  
BUREAU OF LAND MANAGEMENT

2005 JAN 24 6 57 11

FORM APPROVED  
OMB No. 1004-0136  
Expires November 30, 2000

APPLICATION FOR PERMIT TO DRILL OR REENTER

1a. Type of Work: ☒ DRILL ☐ REENTER

1b. Type of Well: ☐ Oil Well ☒ Gas Well ☐ Other ☐ Single Zone ☐ Multiple Zone

2. Name of Operator  
Roddy Production Co., Inc.

3a. Address  
P. O. Box 2221, Farmington NM 87499

3b. Phone No. (include area code)  
(505) 325-5750

4. Location of Well (Report location clearly and in accordance with any State requirements. \*)

At surface 692' FSL x 1710' FWL

At proposed prod. zone same

14. Distance in miles and direction from nearest town or post office\*  
3 miles south of Bloomfield, NM

15. Distance from proposed\*  
location to nearest  
property or lease line, ft.  
(Also to nearest drig. unit line, if any) 692'

18. Distance from proposed location\*  
to nearest well, drilling, completed,  
applied for, on this lease, ft. 871'

21. Elevations (Show whether DF, KDB, RT, GL, etc.)  
5719' GL

16. No. of Acres in lease

1,731.86

19. Proposed Depth

1750'

17. Spacing Unit dedicated to this well

320 w/z

20. BLJIA/BIA Bond No. on file

RLB 0004061

22. Approximate date work will start\*  
03/20/05

23. Estimated duration  
20 days

24. Attachments drilling plan

The following, completed in accordance with the requirements of Onshore Oil and Gas Order No. 1, shall be attached to this form:

1. Well plat certified by a registered surveyor.
2. A Drilling Plan.
3. A Surface Use Plan (if the location is on National Forest System Lands, the SUPO shall be filed with the appropriate Forest Service Office).

4. Bond to cover the operations unless covered by an existing bond on file (see Item 20 above).
5. Operator certification.
6. Such other site specific information and/or plans as may be required by the authorized officer.

25. Signature

Title

Operations Manager, Agent for Roddy Production

Approved by (Signature)

Title

Name (Printed/Typed)

Robert R. Griffiee

Date

01/21/05

Name (Printed/Typed)

Office

Date

2-15-05

Application approval does not warrant or certify the the applicant holds legal or equitable title to those rights in the subject lease which would entitle the applicant to conduct operations thereon.

Conditions of approval, if any, are attached.

Title 18 U.S.C. Section 1001 and Title 43 U.S.C. Section 1212, make it a crime for any person knowingly and willfully to make to any department or agency of the United States any false, fictitious or fraudulent statements or representations as to any matter within its jurisdiction.

\*(Instructions on reverse)

This action is subject to technical and  
procedural review pursuant to 43 CFR 3165.3  
and appeal pursuant to 43 CFR 3165.4

NMOC

DRILLING OPERATIONS AUTHORIZED ARE  
SUBJECT TO COMPLIANCE WITH ATTACHED  
"GENERAL REQUIREMENTS".

DISTRICT I  
P.O. Box 1980, Hobbs, N.M. 88241-1980

DISTRICT II  
P.O. Drawer DD, Artesia, N.M. 88211-0719

DISTRICT III  
1000 Rio Brazos Rd., Aztec, N.M. 87410

DISTRICT IV  
PO Box 2088, Santa Fe, NM 87504-2088

State of New Mexico  
Energy, Minerals & Natural Resources Department

Form C-102

Revised February 21, 1994

Instructions on back

Submit to Appropriate District Office

State Lease - 4 Copies

Fee Lease - 3 Copies

OIL CONSERVATION DIVISION

P.O. Box 2088  
Santa Fe, NM 87504-2088

2005 JAN 21 10 1 38

☐ AMENDED REPORT

WELL LOCATION AND ACREAGE DEDICATION PLAT

<sup>1</sup> API Number 30-045-32854	<sup>2</sup> Pool Code 71629	<sup>3</sup> Pool Name BASIN FRUITLAND COAL
<sup>4</sup> Property Code 13929	<sup>5</sup> Property Name LUCERNE <i>federal</i>	<sup>6</sup> Well Number 10
<sup>7</sup> OGRID No. 36845	<sup>8</sup> Operator Name RODDY PRODUCTION	<sup>9</sup> Elevation 5718.88

<sup>10</sup> Surface Location

UL or lot no.	Section	Township	Range	Lot Idn	Feet from the	North/South line	Feet from the	East/West line	County
N	17	28N	11W		691.96	SOUTH	1710.34	WEST	SAN JUAN

<sup>11</sup> Bottom Hole Location If Different From Surface

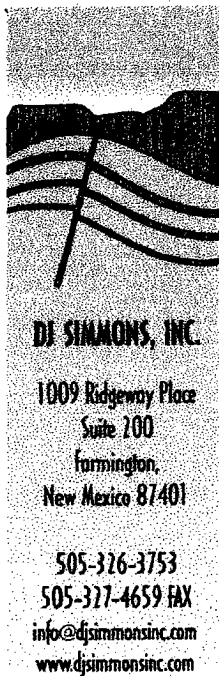
UL or lot no.	Section	Township	Range	Lot Idn	Feet from the	North/South line	Feet from the	East/West line	County

<sup>12</sup> Dedicated Acres 320	<sup>13</sup> Joint or Infill 1	<sup>14</sup> Consolidation Code	<sup>15</sup> Order No.
--------------------------------------	------------------------------------	----------------------------------	-------------------------

NO ALLOWABLE WILL BE ASSIGNED TO THIS COMPLETION UNTIL ALL INTERESTS HAVE BEEN CONSOLIDATED  
OR A NON-STANDARD UNIT HAS BEEN APPROVED BY THE DIVISION

<p>16</p> <p>SECTION 17</p> <p>1710.34'</p> <p>691.96'</p>	<p>17 OPERATOR CERTIFICATION</p> <p>I hereby certify that the information contained herein is true and complete to the best of my knowledge and belief</p> <p><i>Robert R. Griffiee</i></p> <p>Signature ROBERT R GRIFFEE</p> <p>Printed Name OPERATIONS MANAGER</p> <p>Title JAN 21, 2005</p> <p>Date</p>
<p>18 SURVEYOR CERTIFICATION</p> <p>I hereby certify that the well location shown on this plat was plotted from field notes of actual surveys made by me or under my supervision, and that the same is true and correct to the best of my belief.</p> <p>DECEMBER 30, 2004</p> <p>Date of Survey</p> <p>Signature and Seal of Professional Surveyor</p> <p>JOHN D. WAYNE NEW MEXICO REGISTERED PROFESSIONAL LAND SURVEYOR 9673</p> <p>Certificate Number N.M. PLS #9673</p>	





## Drilling Plan

**Well Name:** Lucerne Federal 10  
**Operator:** Roddy Production Co., Inc.  
**Location:** 692 FSL x 1710 FWL, Section 17, T28N, R11W  
 San Juan County, NM

**Formation:** Fruitland Coal

**Elevation:** 5719' GL

### Geology:

Formation	Top	Probable Content
Nacimiento	Surface	
Ojo Alamo	443	salt water
Kirtland	543	gas/water
Fruitland	1211	gas
Fruitland Sand	1387	gas
Basal Coal	1601	gas
Pictured Cliffs	1617	gas
TD	1750	

**Logging Program:** Spectral Density, Epithermal Neutron, Induction Log from TD to surface casing shoe.

### Drilling Fluid Program:

Interval	Fluid Type	Weight	Viscosity	
0' - 250'	fresh water spud mud	8.4 - 9.0 ppg	30 - 50 sec	no
control				
250' - 1750'	fresh water polymer	8.4 - 9.0 ppg	30 - 50 sec	8-10

### Casing Program:

Interval	Hole Diameter	Csg Size	Wt.	Grade	
Thread					
0' - 250'	8 3/4"	7"	20 ppf	J-55	STC
0' - 1750'	6 1/4"	4 1/2"	10.5 ppf	J-55	STC

**Tubing Program:** 0 - 1700', 2 3/8", 4.7 ppf, J55, EUE

UNITED STATES  
DEPARTMENT OF THE INTERIOR  
BUREAU OF LAND MANAGEMENT

**SUNDRY NOTICES AND REPORTS ON WELLS**

Do not use this form for proposals to drill or to deepen or reentry to a different reservoir.

Use "APPLICATION FOR PERMIT---" for such proposals

**SUBMIT IN TRIPLICATE**

1. Type of Well

☐ Oil ☒ Gas ☐ Other

2. Name of Operator

Roddy Production Company, Inc.

3. Address and Telephone No.

P.O. Box 2221, Farmington NM 87499 (505) 325-5750

4. Location of Well (Footage, Sec., T., R., M., or Survey Description)

Surface location; 692' FSL x 1710' FWL, Section 17, T28N, R11W

FORM APPROVED  
Budget Bureau No. 1004-0135  
Expires: March 31, 1993

5. Lease Designation and Serial No.  
NM10063

6. If Indian, Allottee or Tribe Name  
N/A

7. If Unit or CA, Agreement Designation

8. Well Name and No.

Lucerne Federal 10

9. API Well No. 3004532854  
Not yet assigned

10. Field and Pool, or Exploratory Area  
Basin Fruitland Coal

11. County or Parish, State  
San Juan County, New Mexico

12. CHECK APPROPRIATE BOX(s) TO INDICATE NATURE OF NOTICE, REPORT, OR OTHER DATA

TYPE OF SUBMISSION

☒ Notice of Intent

☐ Subsequent Report

☐ Final Abandonment Notice

TYPE OF ACTION

☐ Abandonment

☐ Recompletion

☐ Plugging Back

☐ Casing Repair

☐ Altering Casing

☒ Other change cmt pgm

☐ Change of Plans

☐ New Construction

☐ Non-Routine Fracturing

☐ Water Shut-Off

☐ Conversion to Injection

☐ Dispose Water

completion on Well

Log form.)

(Note: Report results of multiple  
Completion or Recompletion Report and

13. Describe Proposed or Completed Operations (Clearly state all pertinent details, and give pertinent dates, including estimated date of starting any proposed work. If well is directionally drilled, give subsurface locations and measured and true vertical depth for all markers and zones pertinent to this work.)\*

Roddy Production will change the cementing program for the 4 1/2" Production Casing (see APD dated 1/21/05) for this well as follows: 65 sks Class 'G' + .25 lb/sk D29 + 3.0% D79 + 2.0% S1 + 0.2% D46 (density = 11.7 pg, yield = 2.66 cf/sk, wtr = 16.09 gals/sk) followed by 65 sks Class 'G' 50/50 poz + 5 lbs/sk D24 + 0.25 lbs/sk D29 + 2.0% D20 + 2.0% S1 + 0.1% D46 (density = 13.5 ppg, yield = 1.28 cf/sk, wtr = 5.255 gals/sk). All additives are Schlumberger products. Volumes based on open hole volume + 50% excess. The exact volume of slurry will be recalculated after open hole logs are run and based on the open hole caliper volume + 30%.

14. I hereby certify that the foregoing is true and correct

Signed Robert R. Griffice  
Robert R. Griffice

Title Operations Manager  
agent for Roddy Production

Date: 2/07/05

(This space for Federal or State office use)

Approved by [Signature]  
Conditions of approval, if any:

Title AFM

Date 2-15-05

Title 18 U.S.C. Section 1001, makes it a crime for any person knowingly and willfully to make to any department or agency of the United States any false, fictitious or fraudulent statements or representations as to any matter within its jurisdiction.

\*See Instruction on Reverse Side

## BOPE and Wellhead Specifications and Testing:

From surface casing shoe to TD: 7 1/16" 2000 psi threaded casing head with two 2" outlets.

7 1/16", 2000 psi double gate BOP and 2000 psi choke manifold (see figures 1 and 2). Pressure test BOPE to 2000 psi and 7" surface casing to 600 psi prior to drilling surface casing shoe.

For completion operations: 7" x 2 3/8", 2000 psi tree assembly. 7 1/16", 2000 psi double gate BOP system (see figure 3).

### General Operation:

- Actuate pipe rams once each day during drilling operations. Actuate blind rams once each trip.
- An upper Kelly cock valve, with handle, will be available on the rig floor to fit each drilling string.
- BOP pit level drill will be conducted weekly for each drilling crew.
- All BOP tests and drills will be recorded in the daily drilling report.
- Blind and pipe rams will be equipped with extension hand wheels.

### Cementing Program:

7" Surface Casing String: Run casing with saw tooth guide shoe on bottom, insert float valve one joint from bottom, and install bowspring centralizers as per Onshore Order #2. Cement with 60 sks class 'G' with 1/4 #/sk flocele and 3% CaCl<sub>2</sub> (175 cf slurry, 100% excess to circulate to surface). 15.6 ppg, 1.16 ft<sup>3</sup>/sk 70

4 1/2" Production Casing String: Run casing with float shoe on bottom, float collar one joint from bottom and centralizers every other joint through out Fruitland section. Install one centralizer at the base of the Ojo Alamo and one centralizer inside the surface casing shoe. Cement with 60 sks class 'G' with D79 extender mixed at 11.7 ppg. Top of cement to be at surface. 1.60 ft<sup>3</sup> 2.16 ft<sup>3</sup>/sk

### Special Drilling Operations:

- Mud materials, equipment, and water will be available on location to maintain control of the well during all operations.

**Additional Information:**

- This well is to be completed in the Fruitland Coal formation.
- No abnormal temperature or pressure, or other hazards are anticipated.
- LCM will be added to the mud system as required to maintain circulation.
- Estimated formation pressures:
  - Fruitland Coal            300 psi
  - Pictured Cliffs           300 psi

**Completion Information:**

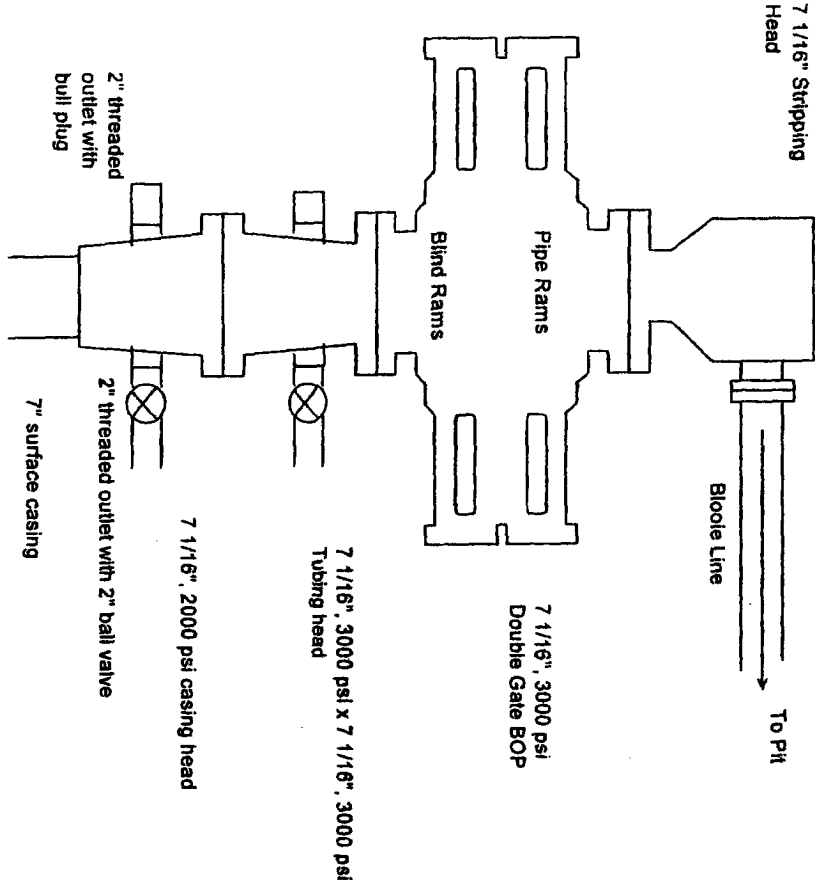
The completion procedure will be prepared after open hole logs are analyzed. The well will probably be completed by hydraulic frac in two stages.

Prepared by: Robert R. Griffie  
Operations Manager  
Agent for Roddy Production

Date: 01/10/05

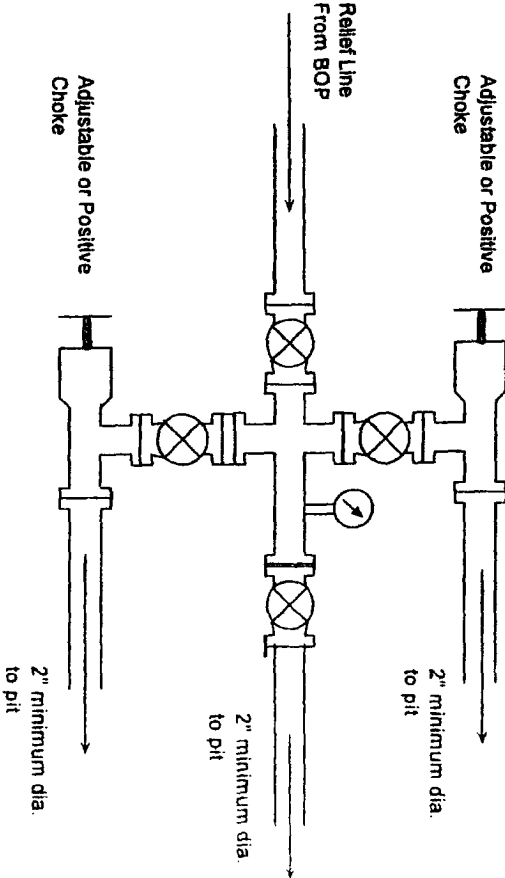
Figure 3

7 1/16", 3000 psi Completion Rig BOP System



BOP Installation for Completion operations. 7 1/16", 3000 psi double gate BOP equipped with blind and pipe rams. All equipment rated at 3000 psi or greater working pressure.

Figure 4

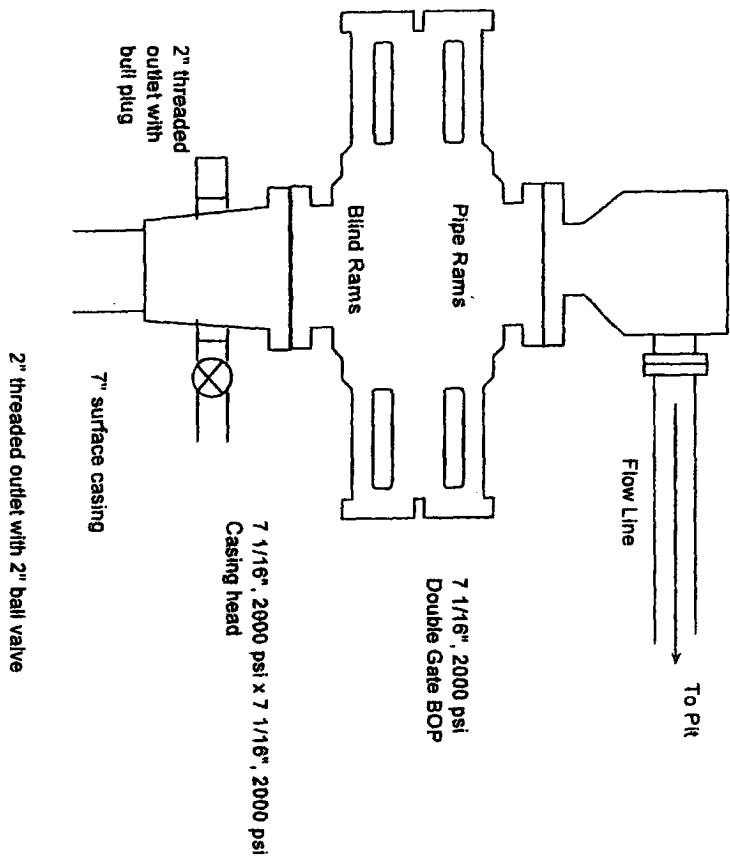


Choke manifold for BOP system shown in Figure 5. All equipment to be rated at 3000 psi or greater.



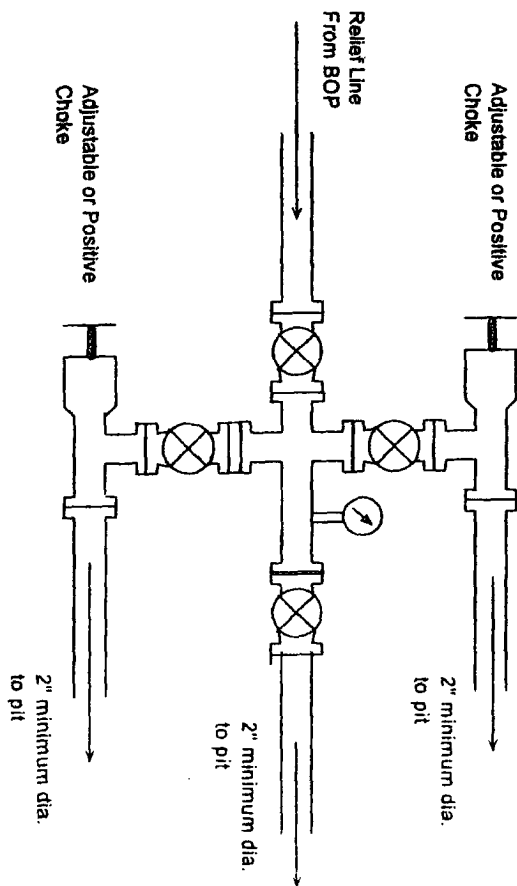
# Figure 1

7 1/16", 2000 psi Drilling BOP System



BOP Installation for Completion operations. 7 1/16", 2000 psi double gate BOP equipped with blind and pipe rams. All equipment rated at 2000 psi or greater working pressure.

# Figure 2



Choke manifold for BOP system shown in Figure 5. All equipment to be rated at 2000 psi or greater.