

UNITED STATES
DEPARTMENT OF THE INTERIOR
GEOLOGICAL SURVEY

30-045-21002

APPLICATION FOR PERMIT TO DRILL, DEEPEN, OR PLUG BACK

1a. TYPE OF WORK

DRILL ☒DEEPEN ☐PLUG BACK ☐

b. TYPE OF WELL

OIL
WELL ☐GAS
WELL ☒

OTHER

SINGLE
ZONE ☐MULTIPLE
ZONE ☐

2. NAME OF OPERATOR

W. M. GALLAWAY

3. ADDRESS OF OPERATOR

101-2 Petroleum Plaza Bldg., Farmington, N.M. 87401

4. LOCATION OF WELL (Report location clearly and in accordance with any State requirements.)*

At surface

1850' PSL, 790' FEL

At proposed prod. zone

Same

14. DISTANCE IN MILES AND DIRECTION FROM NEAREST TOWN OR POST OFFICE*

Approximately 2 1/2 miles South Bloomfield, N.M.

15. DISTANCE FROM PROPOSED*

LOCATION TO NEAREST
PROPERTY OR LEASE LINE, FT.
(Also to nearest drig. unit line, if any)

790'

16. NO. OF ACRES IN LEASE

17. NO. OF ACRES ASSIGNED
TO THIS WELL

155 159.91 ✓

18. DISTANCE FROM PROPOSED LOCATION*
TO NEAREST WELL, DRILLING, COMPLETED,
OR APPLIED FOR, ON THIS LEASE, FT.

1200'

19. PROPOSED DEPTH

1850'

20. ROTARY OR CABLE TOOLS

Rotary

21. ELEVATIONS (Show whether DF, RT, GR, etc.)

5576' Gt.

22. APPROX. DATE WORK WILL START*

Aug. 16, 1972

23.

PROPOSED CASING AND CEMENTING PROGRAM

SIZE OF HOLE	SIZE OF CASING	WEIGHT PER FOOT	SETTING DEPTH	QUANTITY OF CEMENT
3 3/4"	7"	23.5	65'	25 S.
6 1/4"	4 1/2"	9.5	1850'	100 S.

Plan to mud drill through Pictured Cliffs formation and
set production casing through productive zone, perforate
casing, stimulate well by fracturing, run tubing and test well.

RECEIVED
AUG 17 1972
OIL CON. COM.
DIST. 3

RECEIVED

AUG 16 1972

U. S. GEOLOGICAL SURVEY
FARMINGTON, N. M.

IN ABOVE SPACE DESCRIBE PROPOSED PROGRAM: If proposal is to deepen or plug back, give data on present productive zone and proposed new productive zone. If proposal is to drill or deepen directionally, give pertinent data on subsurface locations and measured and true vertical depths. Give blowout preventer program, if any.

24.

SIGNED

W. M. Gallaway

TITLE

Operator

DATE

Aug. 15, 1972

(This space for Federal or State office use)

PERMIT NO.

APPROVAL DATE

APPROVED BY

TITLE

DATE

CONDITIONS OF APPROVAL, IF ANY:

*See Instructions On Reverse Side

NEW MEXICO OIL CONSERVATION COMMISSION
WELL LOCATION AND ACERAGE DEDICATION PLAT

RECEIVED
AUG 21 1972
OIL CONSERVATION COMMISSION

All distances must be from the outer boundaries of the Section

Operator W. M. GALLAWAY		Lease Delo		Santa Fe Well No. 8	
Unit Letter I	Section 33	Township 29 NORTH	Range 11 WEST	County SAN JUAN	
Actual Footage Location of Well: 1850 feet from the SOUTH line and 790 feet from the EAST line					
Ground Level Elev. 5576.0	Producing Formation Pictured Cliffs	Pool Fulcher Kutz	Dedicated Acreage: 155.9/160 Acres		

- Outline the acreage dedicated to the subject well by colored pencil or hachure marks on the plat below.
 - If more than one lease is dedicated to the well, outline each and identify the ownership thereof (both as to working interest and royalty).
 - If more than one lease of different ownership is dedicated to the well, have the interests of all owners consolidated by communitization, unitization, force-pooling, etc?
- () Yes () No If answer is "yes," type of consolidation

If answer is "no," list the owners and tract descriptions which have actually consolidated. (Use reverse side of this form if necessary.)

No allowable will be assigned to the well until all interests have been consolidated (by communitization, unitization, forced-pooling, or otherwise) or until a non standard unit, eliminating such interests, has been approved by the Commission.

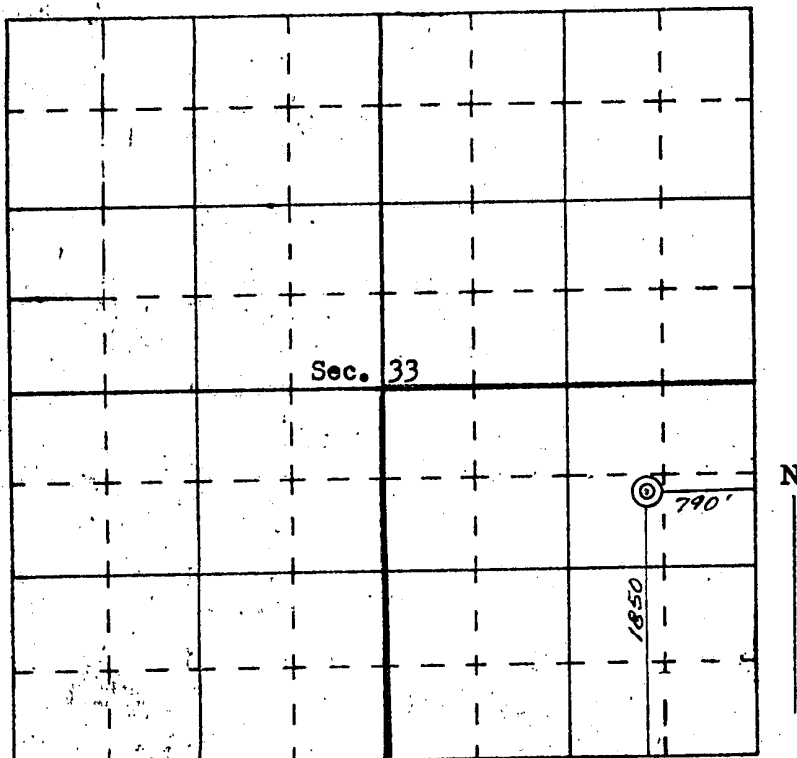
CERTIFICATION

I hereby certify that the information contained herein is true and complete to the best of my knowledge and belief.

W. M. Gallaway
Name
W. M. Gallaway
Position
Operator
Company
W. M. Gallaway
Date
8-3-1972

I hereby certify that the well location shown on this plat was plotted from field notes of actual surveys made by me or under my supervision, and that the same is true and correct to the best of my knowledge and belief.

13 April 1972
Date Surveyed
James P. Leese
Registered Professional Engineer
and Oil Land Surveyor
JAMES P. LEESE
NEW MEXICO
Certificate No. **1463**



SCALE—4 INCHES EQUALS 1 MILE

SAN JUAN ENGINEERING COMPANY, FARMINGTON, N. M.