

DISTRICT I  
1625 N. French Dr., Hobbs, N.M. 88240

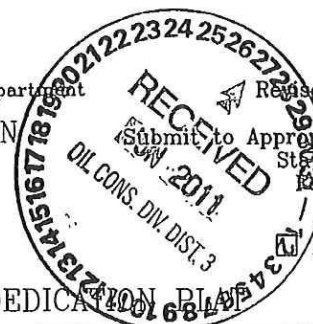
DISTRICT II  
1301 West Grand Avenue, Artesia, N.M. 88210

DISTRICT III  
1000 Rio Brazos Rd., Aztec, N.M. 87410

DISTRICT IV  
1220 S. St. Francis Dr., Santa Fe, NM 87505

State of New Mexico  
Energy, Minerals & Natural Resources Department

OIL CONSERVATION DIVISION  
1220 South St. Francis Dr.  
Santa Fe, NM 87505



Form C-102  
Revised October 12, 2005

Submit to Appropriate District Office  
State Lease - 4 Copies  
Fee Lease - 3 Copies

AS DRILLED PLAT

AMENDED REPORT

WELL LOCATION AND ACREAGE DEDICATION PLAT

<sup>1</sup> API Number 30-039-30998		<sup>2</sup> Pool Code 71599 / 72319		<sup>3</sup> Pool Name BASIN DAKOTA/BLANCO MESAVERDE	
<sup>4</sup> Property Code 16344		<sup>5</sup> Property Name JICARILLA 150			<sup>6</sup> Well Number 8M
<sup>7</sup> GRID No. 14538		<sup>8</sup> Operator Name BURLINGTON RESOURCES OIL & GAS COMPANY LP			<sup>9</sup> Elevation 6677'

<sup>10</sup> Surface Location

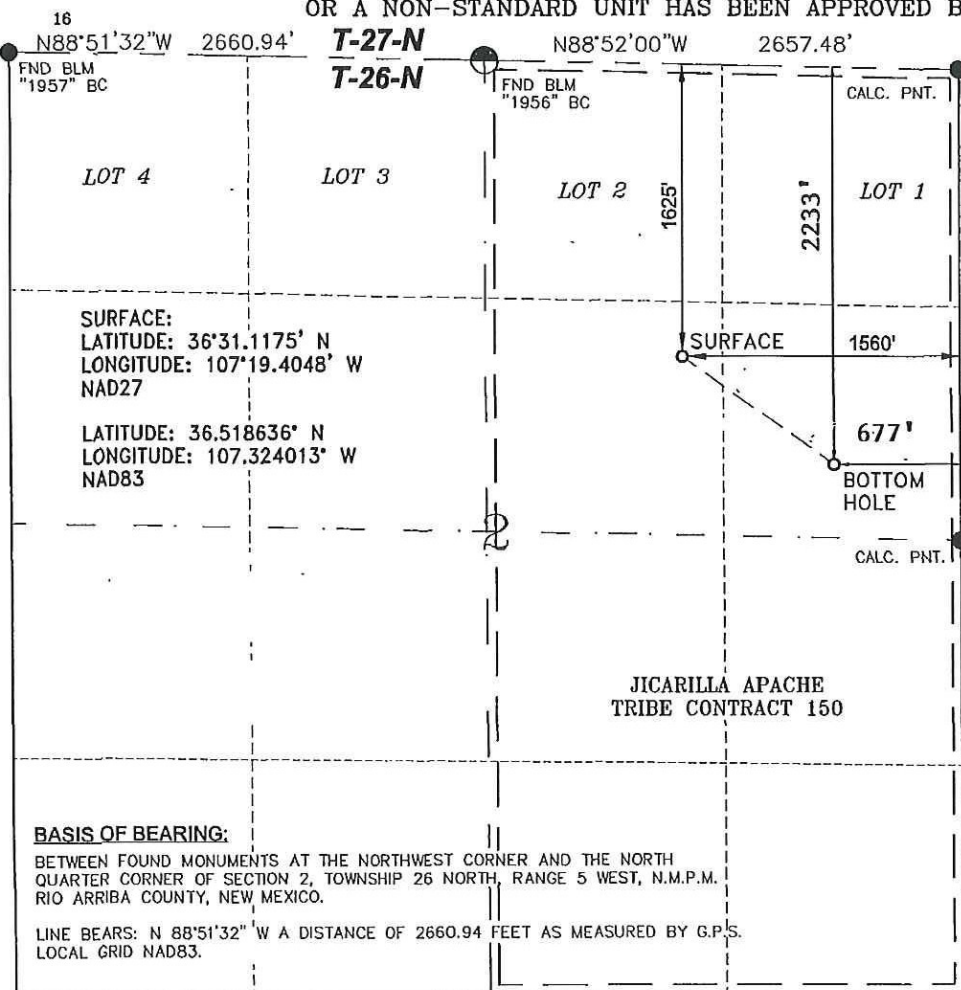
UL or lot no.	Section	Township	Range	Lot Idn	Feet from the	North/South line	Feet from the	East/West line	County
G	2	26-N	5-W		1625	NORTH	1560	EAST	RIO ARriba

<sup>11</sup> Bottom Hole Location If Different From Surface

UL or lot no.	Section	Township	Range	Lot Idn	Feet from the	North/South line	Feet from the	East/West line	County
H	2	26-N	5-W		2233'	NORTH	677'	EAST	RIO ARriba

<sup>12</sup> Dedicated Acres DK 319.83 ACRES E/2 MV 319.83 ACRES E/2		<sup>13</sup> Joint or Infill	<sup>14</sup> Consolidation Code	<sup>15</sup> Order No.
---	--	-------------------------------	----------------------------------	-------------------------

NO ALLOWABLE WILL BE ASSIGNED TO THIS COMPLETION UNTIL ALL INTERESTS HAVE BEEN CONSOLIDATED  
OR A NON-STANDARD UNIT HAS BEEN APPROVED BY THE DIVISION



17 OPERATOR CERTIFICATION

I hereby certify that the information contained herein is true and complete to the best of my knowledge and belief, and that this organization either owns a working interest or unleased mineral interest in the land including the proposed bottom hole location or has a right to drill this well at this location pursuant to a contract with an owner of such a mineral or a working interest, or to a voluntary pooling agreement or a compulsory pooling order heretofore entered by the division.

Signature  
Marie E. Jaramillo 6/23/11  
Printed Name

18 SURVEYOR CERTIFICATION

I hereby certify that the well location shown on this plat was plotted from field notes of actual surveys made by me or under my supervision, and that the same is true and correct to the best of my belief.

MAY 20, 2010  
Date of Survey

Signature and Seal of



GLEN W. RUSSELL  
Certificate Number

15703