

District I
1625 N. French Dr., Hobbs, NM 88240
District II
811 S. First St., Artesia, NM 88210
District III
1000 Rio Brazos Road, Aztec, NM 87410
District IV
1220 S. St. Francis Dr., Santa Fe, NM 87505

State of New Mexico
Energy Minerals and Natural Resources
Department
Oil Conservation Division
1220 South St. Francis Dr.
Santa Fe, NM 87505

Form C-144
Revised June 6, 2013

For temporary pits, below-grade tanks, and multi-well fluid management pits, submit to the appropriate NMOCD District Office.
For permanent pits submit to the Santa Fe Environmental Bureau office and provide a copy to the appropriate NMOCD District Office.

Pit, Below-Grade Tank, or
Proposed Alternative Method Permit or Closure Plan Application

13944

45-24816

- Type of action: ☐ Below grade tank registration
☐ Permit of a pit or proposed alternative method
☒ Closure of a pit, below-grade tank, or proposed alternative method
☐ Modification to an existing permit/or registration
☐ Closure plan only submitted for an existing permitted or non-permitted pit, below-grade tank, or proposed alternative method

RECEIVED
By Rvillalobos at 9:49 am, Dec 30, 2015

Instructions: Please submit one application (Form C-144) per individual pit, below-grade tank or alternative request

Please be advised that approval of this request does not relieve the operator of liability should operations result in pollution of surface water, ground water or the environment. Nor does approval relieve the operator of its responsibility to comply with any other applicable governmental authority's rules, regulations or ordinances.

1.
Operator: Burlington Resources Oil & Gas Company, LP OGRID #: 14538

Address: PO BOX 4289, Farmington, NM 87499

Facility or well name: Southeast Cha Cha 38

API Number: 30-045-24816 OCD Permit Number: _____

U/L or Qtr/Qtr L Section 22 Township 28N Range 13W County: San Juan

Center of Proposed Design: Latitude 36.6463 °N Longitude -108.21159 °W NAD: ☐ 1927 ☒ 1983

Surface Owner: ☐ Federal ☐ State ☐ Private ☒ Tribal Trust or Indian Allotment

2.
☐ **Pit:** Subsection F, G or J of 19.15.17.11 NMAC

Temporary: ☐ Drilling ☐ Workover

☐ Permanent ☐ Emergency ☐ Cavitation ☐ P&A ☐ Multi-Well Fluid Management Low Chloride Drilling Fluid ☐ yes ☐ no

☐ Lined ☐ Unlined Liner type: Thickness _____ mil ☐ LLDPE ☐ HDPE ☐ PVC ☐ Other _____

☐ String-Reinforced

Liner Seams: ☐ Welded ☐ Factory ☐ Other _____ Volume: _____ bbl Dimensions: L _____ x W _____ x D _____

3.
☒ **Below-grade tank:** Subsection I of 19.15.17.11 NMAC

Volume: 120 bbl Type of fluid: Produced Water

Tank Construction material: Metal

☐ Secondary containment with leak detection ☒ Visible sidewalls, liner, 6-inch lift and automatic overflow shut-off

☐ Visible sidewalls and liner ☐ Visible sidewalls only ☐ Other _____

Liner type: Thickness 45 mil ☐ HDPE ☐ PVC ☒ Other LLDPE

4.
☐ **Alternative Method:**

Submittal of an exception request is required. Exceptions must be submitted to the Santa Fe Environmental Bureau office for consideration of approval.

5.
Fencing: Subsection D of 19.15.17.11 NMAC (Applies to permanent pits, temporary pits, and below-grade tanks)

☐ Chain link, six feet in height, two strands of barbed wire at top (Required if located within 1000 feet of a permanent residence, school, hospital, institution or church)

☐ Four foot height, four strands of barbed wire evenly spaced between one and four feet

☐ Alternate. Please specify _____

6.

Netting: Subsection E of 19.15.17.11 NMAC (*Applies to permanent pits and permanent open top tanks*)

- ☐ Screen ☐ Netting ☐ Other _____
- ☐ Monthly inspections (If netting or screening is not physically feasible)

7.

Signs: Subsection C of 19.15.17.11 NMAC

- ☐ 12"x 24", 2" lettering, providing Operator's name, site location, and emergency telephone numbers
- ☐ Signed in compliance with 19.15.16.8 NMAC

8.

Variances and Exceptions:

Justifications and/or demonstrations of equivalency are required. Please refer to 19.15.17 NMAC for guidance.

Please check a box if one or more of the following is requested, if not leave blank:

- ☐ Variance(s): Requests must be submitted to the appropriate division district for consideration of approval.
- ☐ Exception(s): Requests must be submitted to the Santa Fe Environmental Bureau office for consideration of approval.

9.

Siting Criteria (regarding permitting): 19.15.17.10 NMAC***Instructions: The applicant must demonstrate compliance for each siting criteria below in the application. Recommendations of acceptable source material are provided below. Siting criteria does not apply to drying pads or above-grade tanks.*****General siting****Ground water is less than 25 feet below the bottom of a low chloride temporary pit or below-grade tank.**

- ☐ NM Office of the State Engineer - iWATERS database search; ☐ USGS; ☐ Data obtained from nearby wells

☐ Yes ☐ No
☒ NA

Ground water is less than 50 feet below the bottom of a Temporary pit, permanent pit, or Multi-Well Fluid Management pit.

NM Office of the State Engineer - iWATERS database search; USGS; Data obtained from nearby wells

☐ Yes ☐ No
☒ NA

Within incorporated municipal boundaries or within a defined municipal fresh water well field covered under a municipal ordinance adopted pursuant to NMSA 1978, Section 3-27-3, as amended. **(Does not apply to below grade tanks)**

- Written confirmation or verification from the municipality; Written approval obtained from the municipality

☐ Yes ☐ No

Within the area overlying a subsurface mine. **(Does not apply to below grade tanks)**

- Written confirmation or verification or map from the NM EMNRD-Mining and Mineral Division

☐ Yes ☐ No

Within an unstable area. **(Does not apply to below grade tanks)**

- Engineering measures incorporated into the design; NM Bureau of Geology & Mineral Resources; USGS; NM Geological Society; Topographic map

☐ Yes ☐ No

Within a 100-year floodplain. **(Does not apply to below grade tanks)**

- FEMA map

☐ Yes ☐ No

Below Grade Tanks

Within 100 feet of a continuously flowing watercourse, significant watercourse, lake bed, sinkhole, wetland or playa lake (measured from the ordinary high-water mark).

- Topographic map; Visual inspection (certification) of the proposed site

☐ Yes ☒ No

Within 200 horizontal feet of a spring or a fresh water well used for public or livestock consumption;

- NM Office of the State Engineer - iWATERS database search; Visual inspection (certification) of the proposed site

☐ Yes ☒ No

Temporary Pit using Low Chloride Drilling Fluid (maximum chloride content 15,000 mg/liter)

Within 100 feet of a continuously flowing watercourse, or any other significant watercourse or within 200 feet of any lakebed, sinkhole, or playa lake (measured from the ordinary high-water mark). (Applies to low chloride temporary pits.)

- Topographic map; Visual inspection (certification) of the proposed site

☐ Yes ☐ No

Within 300 feet from a occupied permanent residence, school, hospital, institution, or church in existence at the time of initial application.

- Visual inspection (certification) of the proposed site; Aerial photo; Satellite image

☐ Yes ☐ No

Within 200 horizontal feet of a spring or a private, domestic fresh water well used by less than five households for domestic or stock watering purposes, or 300feet of any other fresh water well or spring, in existence at the time of the initial application.

NM Office of the State Engineer - iWATERS database search; Visual inspection (certification) of the proposed site

☐ Yes ☐ No

Within 100 feet of a wetland.

- US Fish and Wildlife Wetland Identification map; Topographic map; Visual inspection (certification) of the proposed site

☐ Yes ☐ No

Temporary Pit Non-low chloride drilling fluid

Within 300 feet of a continuously flowing watercourse, or any other significant watercourse, or within 200 feet of any lakebed, sinkhole, or playa lake (measured from the ordinary high-water mark).

- Topographic map; Visual inspection (certification) of the proposed site

☐ Yes ☐ No

Within 300 feet from a permanent residence, school, hospital, institution, or church in existence at the time of initial application.

- Visual inspection (certification) of the proposed site; Aerial photo; Satellite image

☐ Yes ☐ No

Within 500 horizontal feet of a spring or a private, domestic fresh water well used by less than five households for domestic or stock watering purposes, or 1000 feet of any other fresh water well or spring, in the existence at the time of the initial application;

- NM Office of the State Engineer - iWATERS database search; Visual inspection (certification) of the proposed site

☐ Yes ☐ No

Within 300 feet of a wetland.

- US Fish and Wildlife Wetland Identification map; Topographic map; Visual inspection (certification) of the proposed site

☐ Yes ☐ No

Permanent Pit or Multi-Well Fluid Management Pit

Within 300 feet of a continuously flowing watercourse, or 200 feet of any other significant watercourse, or lakebed, sinkhole, or playa lake (measured from the ordinary high-water mark).

- Topographic map; Visual inspection (certification) of the proposed site

☐ Yes ☐ No

Within 1000 feet from a permanent residence, school, hospital, institution, or church in existence at the time of initial application.

- Visual inspection (certification) of the proposed site; Aerial photo; Satellite image

☐ Yes ☐ No

Within 500 horizontal feet of a spring or a fresh water well used for domestic or stock watering purposes, in existence at the time of initial application.

- NM Office of the State Engineer - iWATERS database search; Visual inspection (certification) of the proposed site

☐ Yes ☐ No

Within 500 feet of a wetland.

- US Fish and Wildlife Wetland Identification map; Topographic map; Visual inspection (certification) of the proposed site

☐ Yes ☐ No

10.

Temporary Pits, Emergency Pits, and Below-grade Tanks Permit Application Attachment Checklist: Subsection B of 19.15.17.9 NMAC

Instructions: Each of the following items must be attached to the application. Please indicate, by a check mark in the box, that the documents are attached.

- ☐ Hydrogeologic Report (Below-grade Tanks) - based upon the requirements of Paragraph (4) of Subsection B of 19.15.17.9 NMAC
- ☐ Hydrogeologic Data (Temporary and Emergency Pits) - based upon the requirements of Paragraph (2) of Subsection B of 19.15.17.9 NMAC
- ☐ Siting Criteria Compliance Demonstrations - based upon the appropriate requirements of 19.15.17.10 NMAC
- ☐ Design Plan - based upon the appropriate requirements of 19.15.17.11 NMAC
- ☐ Operating and Maintenance Plan - based upon the appropriate requirements of 19.15.17.12 NMAC
- ☐ Closure Plan (Please complete Boxes 14 through 18, if applicable) - based upon the appropriate requirements of Subsection C of 19.15.17.9 NMAC

and 19.15.17.13 NMAC

- ☐ Previously Approved Design (attach copy of design) API Number: _____ or Permit Number: _____

11.

Multi-Well Fluid Management Pit Checklist: Subsection B of 19.15.17.9 NMAC

Instructions: Each of the following items must be attached to the application. Please indicate, by a check mark in the box, that the documents are attached.

- ☐ Design Plan - based upon the appropriate requirements of 19.15.17.11 NMAC
 - ☐ Operating and Maintenance Plan - based upon the appropriate requirements of 19.15.17.12 NMAC
 - ☐ A List of wells with approved application for permit to drill associated with the pit.
 - ☐ Closure Plan (Please complete Boxes 14 through 18, if applicable) - based upon the appropriate requirements of Subsection C of 19.15.17.9 NMAC
- and 19.15.17.13 NMAC
- ☐ Hydrogeologic Data - based upon the requirements of Paragraph (4) of Subsection B of 19.15.17.9 NMAC
 - ☐ Siting Criteria Compliance Demonstrations - based upon the appropriate requirements of 19.15.17.10 NMAC

- ☐ Previously Approved Design (attach copy of design) API Number: _____ or Permit Number: _____

12.
Permanent Pits Permit Application Checklist: Subsection B of 19.15.17.9 NMAC

Instructions: Each of the following items must be attached to the application. Please indicate, by a check mark in the box, that the documents are attached.

- ☐ Hydrogeologic Report - based upon the requirements of Paragraph (1) of Subsection B of 19.15.17.9 NMAC
- ☐ Siting Criteria Compliance Demonstrations - based upon the appropriate requirements of 19.15.17.10 NMAC
- ☐ Climatological Factors Assessment
- ☐ Certified Engineering Design Plans - based upon the appropriate requirements of 19.15.17.11 NMAC
- ☐ Dike Protection and Structural Integrity Design - based upon the appropriate requirements of 19.15.17.11 NMAC
- ☐ Leak Detection Design - based upon the appropriate requirements of 19.15.17.11 NMAC
- ☐ Liner Specifications and Compatibility Assessment - based upon the appropriate requirements of 19.15.17.11 NMAC
- ☐ Quality Control/Quality Assurance Construction and Installation Plan
- ☐ Operating and Maintenance Plan - based upon the appropriate requirements of 19.15.17.12 NMAC
- ☐ Freeboard and Overtopping Prevention Plan - based upon the appropriate requirements of 19.15.17.11 NMAC
- ☐ Nuisance or Hazardous Odors, including H₂S, Prevention Plan
- ☐ Emergency Response Plan
- ☐ Oil Field Waste Stream Characterization
- ☐ Monitoring and Inspection Plan
- ☐ Erosion Control Plan
- ☐ Closure Plan - based upon the appropriate requirements of Subsection C of 19.15.17.9 NMAC and 19.15.17.13 NMAC

13.
Proposed Closure: 19.15.17.13 NMAC

Instructions: Please complete the applicable boxes, Boxes 14 through 18, in regards to the proposed closure plan.

Type: ☐ Drilling ☐ Workover ☐ Emergency ☐ Cavitation ☐ P&A ☐ Permanent Pit ☐ Below-grade Tank ☐ Multi-well Fluid Management Pit
☐ Alternative

Proposed Closure Method: ☒ Waste Excavation and Removal
☐ Waste Removal (Closed-loop systems only)
☐ On-site Closure Method (Only for temporary pits and closed-loop systems)
☐ In-place Burial ☐ On-site Trench Burial
☐ Alternative Closure Method

14.
Waste Excavation and Removal Closure Plan Checklist: (19.15.17.13 NMAC) **Instructions:** Each of the following items must be attached to the closure plan. Please indicate, by a check mark in the box, that the documents are attached.

- ☒ Protocols and Procedures - based upon the appropriate requirements of 19.15.17.13 NMAC
- ☒ Confirmation Sampling Plan (if applicable) - based upon the appropriate requirements of Subsection C of 19.15.17.13 NMAC
- ☒ Disposal Facility Name and Permit Number (for liquids, drilling fluids and drill cuttings)
- ☒ Soil Backfill and Cover Design Specifications - based upon the appropriate requirements of Subsection H of 19.15.17.13 NMAC
- ☒ Re-vegetation Plan - based upon the appropriate requirements of Subsection H of 19.15.17.13 NMAC
- ☒ Site Reclamation Plan - based upon the appropriate requirements of Subsection H of 19.15.17.13 NMAC

15.
Siting Criteria (regarding on-site closure methods only): 19.15.17.10 NMAC

Instructions: Each siting criteria requires a demonstration of compliance in the closure plan. Recommendations of acceptable source material are provided below. Requests regarding changes to certain siting criteria require justifications and/or demonstrations of equivalency. Please refer to 19.15.17.10 NMAC for guidance.

Ground water is less than 25 feet below the bottom of the buried waste. - NM Office of the State Engineer - iWATERS database search; USGS; Data obtained from nearby wells	<input type="checkbox"/> Yes <input type="checkbox"/> No <input type="checkbox"/> NA
Ground water is between 25-50 feet below the bottom of the buried waste - NM Office of the State Engineer - iWATERS database search; USGS; Data obtained from nearby wells	<input type="checkbox"/> Yes <input type="checkbox"/> No <input type="checkbox"/> NA
Ground water is more than 100 feet below the bottom of the buried waste. - NM Office of the State Engineer - iWATERS database search; USGS; Data obtained from nearby wells	<input type="checkbox"/> Yes <input type="checkbox"/> No <input type="checkbox"/> NA
Within 100 feet of a continuously flowing watercourse, or 200 feet of any other significant watercourse, lakebed, sinkhole, or playa lake (measured from the ordinary high-water mark). - Topographic map; Visual inspection (certification) of the proposed site	<input type="checkbox"/> Yes <input type="checkbox"/> No
Within 300 feet from a permanent residence, school, hospital, institution, or church in existence at the time of initial application. - Visual inspection (certification) of the proposed site; Aerial photo; Satellite image	<input type="checkbox"/> Yes <input type="checkbox"/> No
Within 300 horizontal feet of a private, domestic fresh water well or spring used for domestic or stock watering purposes, in existence at the time of initial application. - NM Office of the State Engineer - iWATERS database; Visual inspection (certification) of the proposed site	<input type="checkbox"/> Yes <input type="checkbox"/> No
Written confirmation or verification from the municipality; Written approval obtained from the municipality	<input type="checkbox"/> Yes <input type="checkbox"/> No
Within 300 feet of a wetland. US Fish and Wildlife Wetland Identification map; Topographic map; Visual inspection (certification) of the proposed site	<input type="checkbox"/> Yes <input type="checkbox"/> No
Within incorporated municipal boundaries or within a defined municipal fresh water well field covered under a municipal ordinance	

adopted pursuant to NMSA 1978, Section 3-27-3, as amended. - Written confirmation or verification from the municipality; Written approval obtained from the municipality	<input type="checkbox"/> Yes <input type="checkbox"/> No
Within the area overlying a subsurface mine. - Written confirmation or verification or map from the NM EMNRD-Mining and Mineral Division	<input type="checkbox"/> Yes <input type="checkbox"/> No
Within an unstable area. - Engineering measures incorporated into the design; NM Bureau of Geology & Mineral Resources; USGS; NM Geological Society; Topographic map	<input type="checkbox"/> Yes <input type="checkbox"/> No
Within a 100-year floodplain. - FEMA map	<input type="checkbox"/> Yes <input type="checkbox"/> No

16.
On-Site Closure Plan Checklist: (19.15.17.13 NMAC) *Instructions: Each of the following items must be attached to the closure plan. Please indicate, by a check mark in the box, that the documents are attached.*

<input type="checkbox"/> Siting Criteria Compliance Demonstrations - based upon the appropriate requirements of 19.15.17.10 NMAC
<input type="checkbox"/> Proof of Surface Owner Notice - based upon the appropriate requirements of Subsection E of 19.15.17.13 NMAC
<input type="checkbox"/> Construction/Design Plan of Burial Trench (if applicable) based upon the appropriate requirements of Subsection K of 19.15.17.11 NMAC
<input type="checkbox"/> Construction/Design Plan of Temporary Pit (for in-place burial of a drying pad) - based upon the appropriate requirements of 19.15.17.11 NMAC
<input type="checkbox"/> Protocols and Procedures - based upon the appropriate requirements of 19.15.17.13 NMAC
<input type="checkbox"/> Confirmation Sampling Plan (if applicable) - based upon the appropriate requirements of 19.15.17.13 NMAC
<input type="checkbox"/> Waste Material Sampling Plan - based upon the appropriate requirements of 19.15.17.13 NMAC
<input type="checkbox"/> Disposal Facility Name and Permit Number (for liquids, drilling fluids and drill cuttings or in case on-site closure standards cannot be achieved)
<input type="checkbox"/> Soil Cover Design - based upon the appropriate requirements of Subsection H of 19.15.17.13 NMAC
<input type="checkbox"/> Re-vegetation Plan - based upon the appropriate requirements of Subsection H of 19.15.17.13 NMAC
<input type="checkbox"/> Site Reclamation Plan - based upon the appropriate requirements of Subsection H of 19.15.17.13 NMAC

17.
Operator Application Certification:
 I hereby certify that the information submitted with this application is true, accurate and complete to the best of my knowledge and belief.

Name (Print): Larissa Farrell Title: Regulatory Technician

Signature: Larissa Farrell Date: 12-22-15

e-mail address: Larissa.L.Farrell@cop.com Telephone: 505-324-9504

18.
OCD Approval: ☐ Permit Application (including closure plan) ☒ Closure ~~Plan (only)~~ ☐ OCD Conditions (see attachment)

OCD Representative Signature: Jonath D. Kelly Approval Date: 6/27/2016

Title: Compliance Officer OCD Permit Number: _____

19.
Closure Report (required within 60 days of closure completion): 19.15.17.13 NMAC
Instructions: Operators are required to obtain an approved closure plan prior to implementing any closure activities and submitting the closure report. The closure report is required to be submitted to the division within 60 days of the completion of the closure activities. Please do not complete this section of the form until an approved closure plan has been obtained and the closure activities have been completed.

☒ Closure Completion Date: February 25, 2015

20.
Closure Method:
☒ Waste Excavation and Removal ☐ On-Site Closure Method ☐ Alternative Closure Method ☐ Waste Removal (Closed-loop systems only)
☐ If different from approved plan, please explain.

21.
Closure Report Attachment Checklist: *Instructions: Each of the following items must be attached to the closure report. Please indicate, by a check mark in the box, that the documents are attached.*

<input checked="" type="checkbox"/> Proof of Closure Notice (surface owner and division)
<input type="checkbox"/> Proof of Deed Notice (required for on-site closure for private land only)
<input type="checkbox"/> Plot Plan (for on-site closures and temporary pits)
<input checked="" type="checkbox"/> Confirmation Sampling Analytical Results (if applicable)
<input type="checkbox"/> Waste Material Sampling Analytical Results (required for on-site closure)
<input type="checkbox"/> Disposal Facility Name and Permit Number
<input checked="" type="checkbox"/> Soil Backfilling and Cover Installation
<input checked="" type="checkbox"/> Re-vegetation Application Rates and Seeding Technique
<input checked="" type="checkbox"/> Site Reclamation (Photo Documentation)

On-site Closure Location: Latitude _____ °N _____ °W _____ NAD: ☐ 1927 ☐ 1983

Operator Closure Certification:

I hereby certify that the information and attachments submitted with this closure report is true, accurate and complete to the best of my knowledge and belief. I also certify that the closure complies with all applicable closure requirements and conditions specified in the approved closure plan.

Name (Print): Larissa Farrell Title: Regulatory Technician

Signature: _____ Date: _____

e-mail address: Larissa.L.Farrell@cop.com Telephone: (505)326-9504

Burlington Resources Oil & Gas Company
San Juan Basin: New Mexico Assets
Below Grade Tank Closure Report

Lease Name: Southeast Cha Cha 38

API No.: 30-045-24816

In accordance with Rule 19.15.17.13 NMAC, the following information describes the closure of the below-grade tank referenced above. All proper documentation regarding closure activities is being included with the C-144.

General Plan Requirements:

1. Prior to initiating any BGT closure, except in the case of an emergency, BR will notify the surface owner of the intent to close the BGT by certified mail no later than 72 hours or one week before closure and a copy of this notification will be included in the closure report. In the case of an emergency, the surface owner will be notified as soon as practical.

The closure process notification to the landowner was not found.

2. Notice of closure will be given to the District Division office between 72 hours and one week of the scheduled closure via email or phone. The notification of closure will include the following:
 - a. Operators Name
 - b. Well Name and API Number
 - c. Location

Notification is attached.

3. All liquids will be removed from the BGT following cessation of operation. Produced water will be disposed of at one of COP's approved Salt Water Disposal facilities or at a District Division approved facility.

All recovered liquids were disposed of at an approved SWD facility or an approved District Division facility within 60 days of cessation of operation.

4. Solids and sludge's will be shoveled and/or vacuumed out for disposal at one of the District Division approved facilities, depending on the proximity of the BGT site: Envirotech Land Farm (Permit #NM-01-011), JFJ Land Farm % Industrial Ecosystems Inc. (Permit #NM-01-0010B), and Basin Disposal (Permit #NM-01-005).

Any sludge or soil required to be removed to facilitate closure was transported to Envirotech Land Farm (Permit # NM-01-011) and/or JFJ Landfarm % IEI (Permit# NM-01-0010B).

5. BR will obtain prior approval from District Division to dispose, recycle, reuse, or reclaim the BGT and provide documentation of the disposition of the BGT in the closure report. Steel

materials will be recycled or reused as approved by the District Division. Fiberglass tanks will be empty, cut up or shredded, and EPA cleaned for disposal as solid waste. Liner materials will be cleaned without soils or contaminated material for disposal as solid waste. Fiberglass tanks and liner materials will meet the conditions of 19.15.35 NMAC. Disposal will be at a licensed disposal facility, presently San Juan County Landfill operated by Waste Management under NMED Permit SWM-052426.

The below-grade tank was disposed of in a division-approved manner. The liner was cleaned per 19.15.35.8.C(1)(m) NMAC and disposed of at the San Juan County Regional Landfill located on CR 3100.

6. Any equipment associated with the BGT that is no longer required for some other purpose, following the closure, will be removed.

All on-site equipment associated with the below-grade tank was removed.

7. Following removal of the tank and any liner material, BR will test the soils beneath the BGT as follows:
 - a. At a minimum, a five-point composite sample will be taken to include any obvious stained or wet soils or any other evidence of contamination.
 - b. The laboratory sample shall be analyzed for the constituents listed in Table I of 19.15.17.13.

A five point composite sample was taken of the below-grade tank using sampling tools and all samples tested per Table I of 19.15.17.13 and the results are attached.

8. If the District Division and/or BR determine there is a release, BR will comply with 19.15.17.13.C.3b.

A release was not determined for the above referenced well.

9. Upon completion of the tank removal, pursuant to 19.15.17.13.C.3c, if all contaminant concentrations are less than or equal to the parameters listed in Table I of 19.15.17.13 NMAC, the excavation will be backfilled with non-waste earthen material compacted and covered with a minimum of one foot top soil or background thickness whichever is greater and to existing grade. The surface will be re-contoured to match the native grade and to prevent ponding.

The tank removal area passed all requirements of Table I of 19.15.17.13 NMAC and was backfilled with compacted, non-waste containing, earthen material which included at least one foot of suitable material to establish vegetation at the site.

10. For those portions of the former BGT area no longer required for production activities, BR will seed the disturbed area the first favorable growing season after the BGT is covered. Seeding will be accomplished via drilling on the contour whenever practical, or by other

District Division-approved methods. BR will notify the District Division when reclamation and re-vegetation is complete.

Reclamation of the BGT shall be considered complete when:

- Vegetative cover reflects a life form ratio of +/- 50% of pre disturbance levels.
- Total percent plant cover of at least 70% of pre-disturbance levels (Excluding noxious weeds) OR
- Pursuant to 19.15.17.13.H.5d BR will comply with obligations imposed by other applicable federal or tribal agencies in which there re-vegetation and reclamation requirements provide equal or better protection of fresh water, human health and the environment.

Provision 10 will be accomplished pursuant to 19.15.17.H.5d and notification will be submitted upon completion.

11. For those portions of the former BGT area required for production activities, reseeding will be done at well abandonment, and following the procedure noted above.

The former BGT area is not required for production activities and reseeding will be scheduled per the procedure noted above.

Closure Report:

All closure activities will include proper documentation and will be submitted to OCD within 60 days of the BGT closure on a Closure Report using District Division Form C-144. The Report will include the following:

- Proof of Closure Notice (surface owner and District Division) **(Attached)**
- Backfilling & cover installation **(See Report)**
- Confirmation Sampling Analytical Results **(Attached)**
- Application Rate & Seeding techniques **(See Report)**
- Photo Documentation of Reclamation **(Attached)**

Debrick, Danna (PAC.)

From: Davis, Kenny R
Sent: Wednesday, February 11, 2015 11:07 AM
To: 'Cory.Smith@state.nm.us'
Cc: brandon.powell@state.nm.us; jonathan.kelly@state.nm.us
Subject: 72 hour notice for BGT closure

Subject: 72 Hour BGT Closure Notice

The subject well has a below-grade tank that will begin the closure process between 72 hours and one week from this notification. Please contact me at any time if you have any questions or concerns.

Well Name: Southeast Cha Cha 38

API#: 3004524816

Location: UL: L, Sec. 22, T 28N, R13W

Footages: 2100' FSL & 990' FWL

Operator: BR

Surface Owner: Tribal

Kenny Davis
Staff Regulatory Technician
ConocoPhillips Company
(505) 599-4045
Kenny.r.davis@cop.com

District I
1625 N. French Dr., Hobbs, NM 88240
District II
1301 W. Grand Avenue, Artesia, NM 88210
District III
1000 Rio Brazos Road, Aztec, NM 87410
District IV
1220 S. St. Francis Dr., Santa Fe, NM 87505

State of New Mexico
Energy Minerals and Natural Resources

Oil Conservation Division
1220 South St. Francis Dr.
Santa Fe, NM 87505

Form C-141
Revised August 8, 2011

Submit 1 Copy to appropriate District Office to
accordance with 19.15.29 NMAC.

Release Notification and Corrective Action

OPERATOR

☐ Initial Report ☒ Final Report

Name of Company Burlington Resources Oil & Gas Company, LP	Contact Crystal Walker
Address 3401 East 30th St, Farmington, NM	Telephone No. (505) 326-9837
Facility Name: Southeast Cha Cha 38	Facility Type: Gas Well

Surface Owner Tribal	Mineral Owner Federal	API No.
-----------------------------	------------------------------	---------

LOCATION OF RELEASE


Unit Letter	Section	Township	Range	Feet from the	North/South Line	Feet from the	East/West Line	County
-------------	---------	----------	-------	---------------	------------------	---------------	----------------	--------

Latitude 36.6463 N Longitude -108.21159

NATURE OF RELEASE

Type of Release	Volume of Release	Volume Recovered
Source of Release	Date and Hour of Occurrence	Date and Hour of Discovery
Was Immediate Notice Given? <input type="checkbox"/> Yes <input type="checkbox"/> No <input checked="" type="checkbox"/> Not Required	If YES, To Whom?	
By Whom?	Date and Hour	
Was a Watercourse Reached? <input type="checkbox"/> Yes <input checked="" type="checkbox"/> No	If YES, Volume Impacting the Watercourse.	
If a Watercourse was Impacted, Describe Fully.* N/A		
Describe Cause of Problem and Remedial Action Taken.* No release was encountered during the BGT Closure.		
Describe Area Affected and Cleanup Action Taken.* N/A		

I hereby certify that the information given above is true and complete to the best of my knowledge and understand that pursuant to NMOCD rules and regulations all operators are required to report and/or file certain release notifications and perform corrective actions for releases which may endanger public health or the environment. The acceptance of a C-141 report by the NMOCD marked as "Final Report" does not relieve the operator of liability should their operations have failed to adequately investigate and remediate contamination that pose a threat to ground water, surface water, human health or the environment. In addition, NMOCD acceptance of a C-141 report does not relieve the operator of responsibility for compliance with any other federal, state, or local laws and/or regulations.

Signature: 	<u>OIL CONSERVATION DIVISION</u>		
Printed Name: Larissa Farrell	Approved by Environmental Specialist:		
Title: Regulatory Technician	Approval Date:	Expiration Date:	
E-mail Address: Larissa.L.Farrell@cop.com	Conditions of Approval:		Attached <input type="checkbox"/>
Date: 12-17-15 Phone: (505) 326-326-9504			

* Attach Additional Sheets If Necessary



April 29, 2015

Lindsay Dumas
ConocoPhillips
San Juan Business Unit
Office 214-07
5525 Hwy 64
Farmington, New Mexico 87401

Via electronic mail to: SJBUE-Team@ConocoPhillips.com

**RE: Below Grade Tank Closure Report
Southeast Cha Cha #38
San Juan County, New Mexico**

Dear Ms. Dumas:

Animas Environmental Services, LLC (AES) is pleased to provide the final report associated with the below grade tank (BGT) closure at ConocoPhillips (CoP) Southeast Cha Cha #38 located in San Juan County, New Mexico. Tank removal had been completed by CoP contractors prior to AES' arrival at the location.

1.0 Site Information

1.1 Location

Site Name – Southeast Cha Cha #38

Legal Description – NW¼ SW¼, Section 22, T28N, R13W, San Juan County, New Mexico

Well Latitude/Longitude – N36.64631 and W108.21217, respectively

BGT Latitude/Longitude – N36.64633 and W108.21193, respectively

Land Jurisdiction – Navajo Nation Allotment

Figure 1. Topographic Site Location Map

Figure 2. Aerial Site Map, February 2015

1.2 NMOCD Ranking

The Southeast Cha Cha #38 is located within the Navajo Nation Allotment. Navajo Nation Environmental Protection Agency

604 W. Piñon St.
Farmington, NM 87401
505-564-2281

1911 Main, Ste 280
Durango, CO
970-403-3084

(NNEPA) adheres to action levels for releases and spills as established by the New Mexico Oil Conservation Division (NMOCD).

In accordance with the New Mexico Oil Conservation Division (NMOCD) *Guidelines for Remediation of Leaks, Spills, and Releases* (August 1993), the location was given a ranking score of 10 based on the following factors:

- **Depth to Groundwater:** Depth to groundwater at this site is estimated to be approximately 509 feet below ground surface (bgs) based on data published on the New Mexico State Engineer's iWaters database. (0 points)
- **Wellhead Protection Area:** The tank location is not within a wellhead protection area. (0 points)
- **Distance to Surface Water Body:** There is a small unnamed wash approximately 750 feet north that drains to an unnamed wash in Ojo Amarillo Canyon which ultimately drains to the San Juan River. (10 points)

1.3 BGT Closure Assessment

AES was initially contacted by Steve Welch, CoP representative, on February 25, 2015, and on the same day, Dylan Davis and Sam Glasses of AES mobilized to the location. AES personnel collected six soil samples from below the BGT liner. Four samples were collected from the perimeter of the BGT footprint, one sample was collected from the center of the BGT footprint, and one sample was composited from the four perimeter samples and one center sample.

2.0 Soil Sampling

On February 25, 2015, AES personnel conducted field sampling and collected five soil samples (S-1 through S-5) and one 5-point composite (SC-1) from below the BGT. Soil samples were collected from approximately 0.5 feet below the former BGT for field screening of volatile organic compounds (VOCs) and total petroleum hydrocarbon (TPH). Soil sample SC-1 was field screened for VOCs and chloride and was submitted for confirmation laboratory analysis. Soil sample locations are included on Figure 2.

2.1 Field Sampling

2.1.1 Volatile Organic Compounds

A portion of each sample was utilized for field screening of VOC vapors with a photo-ionization detector (PID) organic vapor meter (OVM). Before beginning field screening, the PID-OVM was first calibrated with 100 parts per million (ppm) isobutylene gas.

2.1.2 Total Petroleum Hydrocarbons

Soil samples were also analyzed in the field for TPH per U.S. Environmental Protection Agency (USEPA) Method 418.1 using a Buck Scientific Model HC-404 Total Hydrocarbon Analyzer Infrared Spectrometer (Buck). A 3-point calibration was completed prior to conducting soil analyses. Field analytical protocol followed AES's *Standard Operating Procedure: Field Analysis Total Petroleum Hydrocarbons per EPA Method 418.1*.

2.1.3 Chlorides

Soil sample SC-1 was field screened for chlorides using Chloride Drop Count Titration with silver nitrate. Sampling and analysis methods followed procedures provided by Hach Company.

2.2 Laboratory Analyses

The composite soil sample SC-1 collected for laboratory analysis was placed into a new, clean, laboratory-supplied container, which was then labeled, placed on ice, and logged onto a sample chain of custody record. The sample was maintained on ice until delivery to the analytical laboratory, Hall Environmental Analysis Laboratory (Hall), in Albuquerque, New Mexico. Soil sample SC-1 was laboratory analyzed for:

- Benzene, toluene, ethylbenzene, and xylene (BTEX) per USEPA Method 8021B;
- TPH for gasoline range organics (GRO), diesel range organics (DRO) and motor range organics (MRO) per USEPA Method 8015D; and
- Chloride per USEPA Method 300.0.

2.3 Field and Laboratory Analytical Results

Field screening readings for VOCs via OVM ranged from 0.0 ppm in S-1, S-2, and S-5 up to 0.3 ppm in S-4. Field TPH concentrations ranged from less than 20.0 mg/kg in S-3 and S-4 up to 27.6 mg/kg in S-2. The field chloride concentration in SC-1 was 100 mg/kg. Field sampling results are summarized in Table 1 and presented on Figure 2. The AES Field Sampling Report is attached.

Table 1. Soil Field Sampling VOCs, TPH, and Chloride Results
Southeast Cha Cha #38 BGT Closure, February 2015

<i>Sample ID</i>	<i>Date Sampled</i>	<i>Depth below BGT (ft)</i>	<i>VOCs OVM Reading (ppm)</i>	<i>Field TPH (mg/kg)</i>	<i>Field Chlorides (mg/kg)</i>
NMOCDC Action Level (NMAC 19.15.17.13E)			--	100	250
S-1	2/25/15	0.5	0.0	26.4	NA
S-2	2/25/15	0.5	0.0	27.6	NA

S-3	2/25/15	0.5	0.1	<20.0	NA
S-4	2/25/15	0.5	0.3	<20.0	NA
S-5	2/25/15	0.5	0.0	25.1	NA
SC-1	2/25/15	0.5	0.2	NA	100

NA - not analyzed

Laboratory analytical results reported benzene and total BTEX concentrations in SC-1 as less than 0.034 mg/kg and less than 0.170 mg/kg, respectively. TPH concentrations as GRO, DRO, and MRO were reported at less than 3.4 mg/kg, less than 9.8 mg/kg, and less than 49 mg/kg, respectively. The laboratory chloride concentration was reported at 260 mg/kg. Laboratory analytical results are summarized in Table 2 and included on Figure 2. The laboratory analytical report is attached.

Table 2. Soil Laboratory Analytical Results
Southeast Cha Cha #38 BGT Closure, February 2015

Sample ID	Date Sampled	Depth (ft)	Benzene (mg/kg)	Total BTEX (mg/kg)	TPH-GRO (mg/kg)	TPH-DRO (mg/kg)	TPH-MRO (mg/kg)	Chlorides (mg/kg)
NMOCD Action Level (NMAC 19.15.17.13E)			0.2	50		100		250
SC-1	2/25/15	0.5	<0.034	<0.170	<3.4	<9.8	<49	260

3.0 Conclusions and Recommendations

The Southeast Cha Cha #38 is located within the Navajo Nation Allotment. The NNEPA adheres to action levels for BGT closures as established by the NMOCD. In accordance with the NMOCD, action levels for BGT closures are specified in New Mexico Administrative Code (NMAC) 19.15.17.13E. Field TPH concentrations were below the NMOCD action level of 100 mg/kg, with the highest concentration reported in S-2 with 27.6 mg/kg. Benzene and total BTEX concentrations in SC-1 were below the NMOCD action levels of 0.2 mg/kg and 50 mg/kg, respectively. Chloride concentrations in SC-1 were slightly above the NMOCD action level of 250 mg/kg with 260 mg/kg. Based on field sampling and laboratory analytical results for benzene, total BTEX, TPH, and chlorides, no further work is recommended at Southeast Cha Cha #38.

If you have any questions about this report or site conditions, please do not hesitate to contact Emilee Skyles at (505) 564-2281.

Sincerely,



Dylan Davis
Staff Geologist

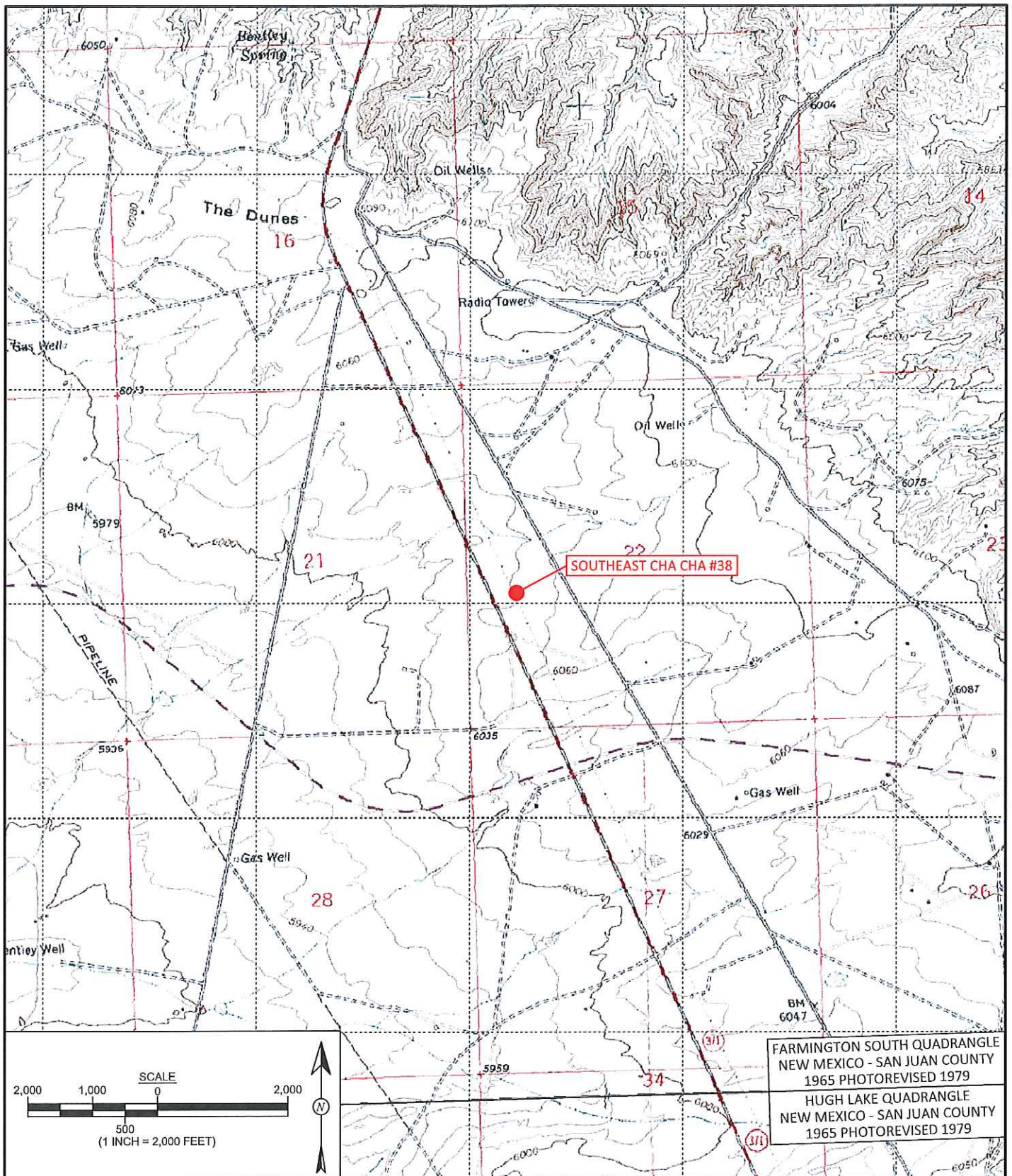


Elizabeth McNally, P.E.

Attachments:

- Figure 1. Topographic Site Location Map
- Figure 2. Aerial Site Map, February 2015
- AES Field Sampling Report 022515
- Hall Analytical Report 1502A67

R:\Animas 2000\Dropbox (Animas Environmental)\0000 Animas Server Dropbox EM\2015
Projects\ConocoPhillips\Southeast Cha Cha #38\Southeast Cha Cha #38 BGT Closure Report 042915.docx



FARMINGTON SOUTH QUADRANGLE
NEW MEXICO - SAN JUAN COUNTY
1965 PHOTOREVISED 1979
HUGH LAKE QUADRANGLE
NEW MEXICO - SAN JUAN COUNTY
1965 PHOTOREVISED 1979



Animas Environmental Services, LLC

DRAWN BY:
S. Glasses

DATE DRAWN:
February 25, 2015

REVISIONS BY:
C. Lameman

DATE REVISED:
February 25, 2015

CHECKED BY:
E. Skyles

DATE CHECKED:
February 25, 2015

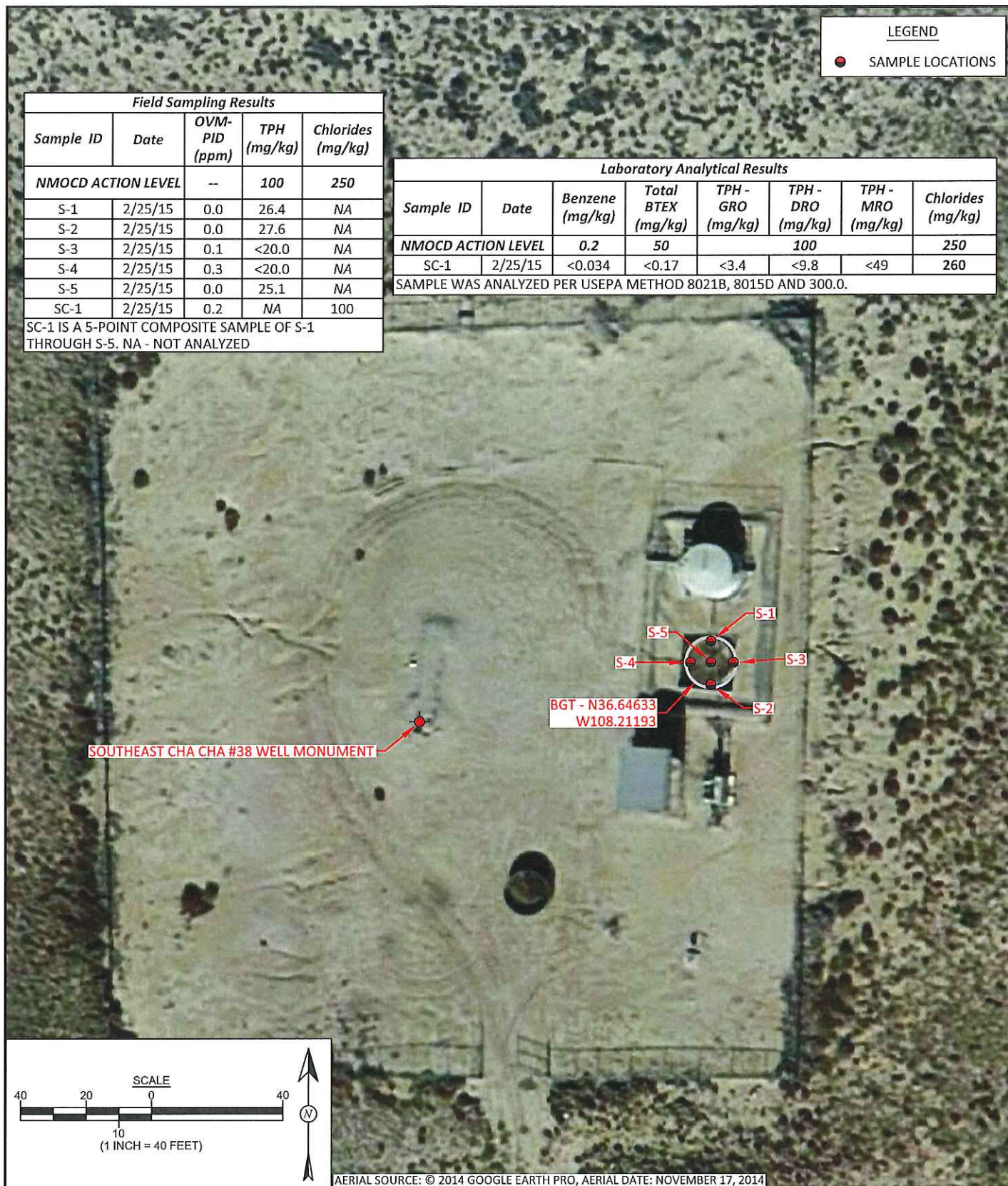
APPROVED BY:
E. McNally


DATE APPROVED:
February 25, 2015

FIGURE 1

TOPOGRAPHIC SITE LOCATION MAP

ConocoPhillips
SOUTHEAST CHA CHA #38
NW¼ SW¼, SECTION 22, T28N, R13W
SAN JUAN COUNTY, NEW MEXICO
N36.64631, W108.21217



 AES Animas Environmental Services, LLC	DRAWN BY: S. Glasses	DATE DRAWN: February 25, 2015	FIGURE 2 AERIAL SITE MAP BELOW GRADE TANK CLOSURE FEBRUARY 2015 ConocoPhillips SOUTHEAST CHA CHA #38 NW¼ SW¼, SECTION 22, T28N, R13W SAN JUAN COUNTY, NEW MEXICO N36.64631, W108.21217
	REVISIONS BY: C. Lameman	DATE REVISED: February 25, 2015	
	CHECKED BY: E. Skyles	DATE CHECKED: February 25, 2015	
	APPROVED BY: E. McNally	DATE APPROVED: February 25, 2015	

AES Field Sampling Report

Animas Environmental Services, LLC



Client: ConocoPhillips

Project Location: Southeast Cha Cha #38

Date: 2/25/2015

Matrix: Soil

Sample ID	Collection Date	Collection Time	Sample Location	OVM (ppm)	Field Chloride (mg/kg)	Field TPH* (mg/kg)	Field TPH Analysis Time	TPH PQL (mg/kg)	DF	TPH Analysts Initials
S-1	2/25/2015	10:45	North	0.0	NA	26.4	11:24	20.0	1	DD
S-2	2/25/2015	10:46	South	0.0	NA	27.6	11:28	20.0	1	DD
S-3	2/25/2015	10:47	East	0.1	NA	16.4	11:31	20.0	1	DD
S-4	2/25/2015	10:48	West	0.3	NA	18.9	11:34	20.0	1	DD
S-5	2/25/2015	10:49	Center	0.0	NA	25.1	11:36	20.0	1	DD
SC-1	2/25/2015	11:00	Composite	0.2	100	Not Analyzed for TPH				

DF Dilution Factor

NA Not Analyzed

PQL Practical Quantitation Limit

*Field TPH concentrations recorded may be below PQL.

Field Chloride - Quantab Chloride Titrators or Drop Count

Titration with Silver Nitrate

Total Petroleum Hydrocarbons - USEPA 418.1

Analyst: *Dylan Dawson*



Hall Environmental Analysis Laboratory
4901 Hawkins NE
Albuquerque, NM 87109
TEL: 505-345-3975 FAX: 505-345-4107
Website: www.hallenvironmental.com

March 11, 2015

Emilee Skyles
Animas Environmental
604 Pinon Street
Farmington, NM 87401
TEL: (505) 564-2281
FAX

RE: CoP Southeast Cha Cha #38

OrderNo.: 1502A67

Dear Emilee Skyles:

Hall Environmental Analysis Laboratory received 1 sample(s) on 2/26/2015 for the analyses presented in the following report.

These were analyzed according to EPA procedures or equivalent. To access our accredited tests please go to www.hallenvironmental.com or the state specific web sites. In order to properly interpret your results it is imperative that you review this report in its entirety. See the sample checklist and/or the Chain of Custody for information regarding the sample receipt temperature and preservation. Data qualifiers or a narrative will be provided if the sample analysis or analytical quality control parameters require a flag. When necessary, data qualifiers are provided on both the sample analysis report and the QC summary report, both sections should be reviewed. All samples are reported, as received, unless otherwise indicated. Lab measurement of analytes considered field parameters that require analysis within 15 minutes of sampling such as pH and residual chlorine are qualified as being analyzed outside of the recommended holding time.

Please don't hesitate to contact HEAL for any additional information or clarifications.

ADHS Cert #AZ0682 -- NMED-DWB Cert #NM9425 -- NMED-Micro Cert #NM0190

Sincerely,

A handwritten signature in black ink, appearing to read "Andy Freeman", is written over a horizontal line.

Andy Freeman
Laboratory Manager
4901 Hawkins NE
Albuquerque, NM 87109

Hall Environmental Analysis Laboratory, Inc.

CLIENT: Animas Environmental
Project: CoP Southeast Cha Cha #38
Lab ID: 1502A67-001

Matrix: SOIL

Client Sample ID: SC-1
Collection Date: 2/25/2015 11:00:00 AM
Received Date: 2/26/2015 7:50:00 AM

Analyses	Result	RL	Qual	Units	DF	Date Analyzed	Batch
EPA METHOD 8015D: DIESEL RANGE ORGANICS							Analyst: JME
Diesel Range Organics (DRO)	ND	9.8		mg/Kg	1	3/3/2015 4:02:29 PM	17929
Motor Oil Range Organics (MRO)	ND	49		mg/Kg	1	3/3/2015 4:02:29 PM	17929
Surr: DNOP	96.4	63.5-128		%REC	1	3/3/2015 4:02:29 PM	17929
EPA METHOD 8015D: GASOLINE RANGE							Analyst: NSB
Gasoline Range Organics (GRO)	ND	3.4		mg/Kg	1	2/27/2015 11:44:51 AM	R24570
Surr: BFB	89.7	80-120		%REC	1	2/27/2015 11:44:51 AM	R24570
EPA METHOD 8021B: VOLATILES							Analyst: NSB
Benzene	ND	0.034		mg/Kg	1	2/27/2015 11:44:51 AM	R24570
Toluene	ND	0.034		mg/Kg	1	2/27/2015 11:44:51 AM	R24570
Ethylbenzene	ND	0.034		mg/Kg	1	2/27/2015 11:44:51 AM	R24570
Xylenes, Total	ND	0.068		mg/Kg	1	2/27/2015 11:44:51 AM	R24570
Surr: 4-Bromofluorobenzene	99.0	80-120		%REC	1	2/27/2015 11:44:51 AM	R24570
EPA METHOD 300.0: ANIONS							Analyst: LGT
Chloride	260	30		mg/Kg	20	3/9/2015 11:19:21 AM	18045

Refer to the QC Summary report and sample login checklist for flagged QC data and preservation information.

Qualifiers:	*	Value exceeds Maximum Contaminant Level.	B	Analyte detected in the associated Method Blank	Page 1 of 6
	E	Value above quantitation range	H	Holding times for preparation or analysis exceeded	
	J	Analyte detected below quantitation limits	ND	Not Detected at the Reporting Limit	
	O	RSD is greater than RSDlimit	P	Sample pH Not In Range	
	R	RPD outside accepted recovery limits	RL	Reporting Detection Limit	
	S	Spike Recovery outside accepted recovery limits			

QC SUMMARY REPORT

Hall Environmental Analysis Laboratory, Inc.

WO#: 1502A67

11-Mar-15

Client: Animas Environmental
Project: CoP Southeast Cha Cha #38

Sample ID	MB-18045	SampType:	MBLK	TestCode:	EPA Method 300.0: Anions					
Client ID:	PBS	Batch ID:	18045	RunNo:	24729					
Prep Date:	3/9/2015	Analysis Date:	3/9/2015	SeqNo:	728382	Units:	mg/Kg			
Analyte	Result	PQL	SPK value	SPK Ref Val	%REC	LowLimit	HighLimit	%RPD	RPDLimit	Qual
Chloride	ND	1.5								

Sample ID	LCS-18045	SampType:	LCS	TestCode:	EPA Method 300.0: Anions					
Client ID:	LCSS	Batch ID:	18045	RunNo:	24729					
Prep Date:	3/9/2015	Analysis Date:	3/9/2015	SeqNo:	728383	Units:	mg/Kg			
Analyte	Result	PQL	SPK value	SPK Ref Val	%REC	LowLimit	HighLimit	%RPD	RPDLimit	Qual
Chloride	14	1.5	15.00	0	91.5	90	110			

Qualifiers:

* Value exceeds Maximum Contaminant Level.
E Value above quantitation range
J Analyte detected below quantitation limits
O RSD is greater than RSDlimit
R RPD outside accepted recovery limits
S Spike Recovery outside accepted recovery limits

B Analyte detected in the associated Method Blank
H Holding times for preparation or analysis exceeded
ND Not Detected at the Reporting Limit
P Sample pH Not In Range
RL Reporting Detection Limit

QC SUMMARY REPORT

Hall Environmental Analysis Laboratory, Inc.

WO#: 1502A67

11-Mar-15

Client: Animas Environmental
Project: CoP Southeast Cha Cha #38

Sample ID	MB-17900	SampType:	MBLK	TestCode:	EPA Method 8015D: Diesel Range Organics					
Client ID:	PBS	Batch ID:	17900	RunNo:	24589					
Prep Date:	2/25/2015	Analysis Date:	3/3/2015	SeqNo:	724383	Units: %REC				
Analyte	Result	PQL	SPK value	SPK Ref Val	%REC	LowLimit	HighLimit	%RPD	RPDLimit	Qual
Surr: DNOP	15		10.00		148	63.5	128			S

Sample ID	LCS-17900	SampType:	LCS	TestCode:	EPA Method 8015D: Diesel Range Organics					
Client ID:	LCSS	Batch ID:	17900	RunNo:	24589					
Prep Date:	2/25/2015	Analysis Date:	3/3/2015	SeqNo:	724454	Units: %REC				
Analyte	Result	PQL	SPK value	SPK Ref Val	%REC	LowLimit	HighLimit	%RPD	RPDLimit	Qual
Surr: DNOP	4.9		5.000		98.8	63.5	128			

Sample ID	1502A67-001AMS	SampType:	MS	TestCode:	EPA Method 8015D: Diesel Range Organics					
Client ID:	SC-1	Batch ID:	17929	RunNo:	24589					
Prep Date:	2/27/2015	Analysis Date:	3/3/2015	SeqNo:	725482	Units: mg/Kg				
Analyte	Result	PQL	SPK value	SPK Ref Val	%REC	LowLimit	HighLimit	%RPD	RPDLimit	Qual
Diesel Range Organics (DRO)	56	10	50.25	0	111	29.2	176			
Surr: DNOP	5.2		5.025		104	63.5	128			

Sample ID	1502A67-001AMSD	SampType:	MSD	TestCode:	EPA Method 8015D: Diesel Range Organics					
Client ID:	SC-1	Batch ID:	17929	RunNo:	24589					
Prep Date:	2/27/2015	Analysis Date:	3/3/2015	SeqNo:	725483	Units: mg/Kg				
Analyte	Result	PQL	SPK value	SPK Ref Val	%REC	LowLimit	HighLimit	%RPD	RPDLimit	Qual
Diesel Range Organics (DRO)	50	9.9	49.26	0	102	29.2	176	10.5	23	
Surr: DNOP	5.0		4.926		102	63.5	128	0	0	

Sample ID	MB-17929	SampType:	MBLK	TestCode:	EPA Method 8015D: Diesel Range Organics					
Client ID:	PBS	Batch ID:	17929	RunNo:	24589					
Prep Date:	2/27/2015	Analysis Date:	3/3/2015	SeqNo:	725484	Units: mg/Kg				
Analyte	Result	PQL	SPK value	SPK Ref Val	%REC	LowLimit	HighLimit	%RPD	RPDLimit	Qual
Diesel Range Organics (DRO)	ND	10								
Motor Oil Range Organics (MRO)	ND	50								
Surr: DNOP	9.0		10.00		89.7	63.5	128			

Sample ID	LCS-17929	SampType:	LCS	TestCode:	EPA Method 8015D: Diesel Range Organics					
Client ID:	LCSS	Batch ID:	17929	RunNo:	24589					
Prep Date:	2/27/2015	Analysis Date:	3/3/2015	SeqNo:	725485	Units: mg/Kg				
Analyte	Result	PQL	SPK value	SPK Ref Val	%REC	LowLimit	HighLimit	%RPD	RPDLimit	Qual
Diesel Range Organics (DRO)	54	10	50.00	0	108	67.8	130			

Qualifiers:

* Value exceeds Maximum Contaminant Level.
E Value above quantitation range
J Analyte detected below quantitation limits
O RSD is greater than RSDlimit
R RPD outside accepted recovery limits
S Spike Recovery outside accepted recovery limits

B Analyte detected in the associated Method Blank
H Holding times for preparation or analysis exceeded
ND Not Detected at the Reporting Limit
P Sample pH Not In Range
RL Reporting Detection Limit

QC SUMMARY REPORT

Hall Environmental Analysis Laboratory, Inc.

WO#: 1502A67

11-Mar-15

Client: Animas Environmental

Project: CoP Southeast Cha Cha #38

Sample ID	LCS-17929	SampType:	LCS	TestCode:	EPA Method 8015D: Diesel Range Organics					
Client ID:	LCSS	Batch ID:	17929	RunNo:	24589					
Prep Date:	2/27/2015	Analysis Date:	3/3/2015	SeqNo:	725485	Units:	mg/Kg			
Analyte	Result	PQL	SPK value	SPK Ref Val	%REC	LowLimit	HighLimit	%RPD	RPDLimit	Qual
Surr: DNOP	5.3		5.000		106	63.5	128			

Qualifiers:

* Value exceeds Maximum Contaminant Level.
E Value above quantitation range
J Analyte detected below quantitation limits
O RSD is greater than RSDlimit
R RPD outside accepted recovery limits
S Spike Recovery outside accepted recovery limits

B Analyte detected in the associated Method Blank
H Holding times for preparation or analysis exceeded
ND Not Detected at the Reporting Limit
P Sample pH Not In Range
RL Reporting Detection Limit

QC SUMMARY REPORT

Hall Environmental Analysis Laboratory, Inc.

WO#: 1502A67

11-Mar-15

Client: Animas Environmental
Project: CoP Southeast Cha Cha #38

Sample ID	5ML RB	SampType:	MBLK	TestCode:	EPA Method 8015D: Gasoline Range					
Client ID:	PBS	Batch ID:	R24570	RunNo:	24570					
Prep Date:		Analysis Date:	2/27/2015	SeqNo:	723587	Units:	mg/Kg			
Analyte	Result	PQL	SPK value	SPK Ref Val	%REC	LowLimit	HighLimit	%RPD	RPDLimit	Qual
Gasoline Range Organics (GRO)	ND	5.0								
Surr: BFB	890		1000		88.5	80	120			

Sample ID	2.5UG GRO LCS	SampType:	LCS	TestCode:	EPA Method 8015D: Gasoline Range					
Client ID:	LCSS	Batch ID:	R24570	RunNo:	24570					
Prep Date:		Analysis Date:	2/27/2015	SeqNo:	723601	Units:	mg/Kg			
Analyte	Result	PQL	SPK value	SPK Ref Val	%REC	LowLimit	HighLimit	%RPD	RPDLimit	Qual
Gasoline Range Organics (GRO)	24	5.0	25.00	0	95.8	64	130			
Surr: BFB	950		1000		95.3	80	120			

Qualifiers:

* Value exceeds Maximum Contaminant Level.
E Value above quantitation range
J Analyte detected below quantitation limits
O RSD is greater than RSDlimit
R RPD outside accepted recovery limits
S Spike Recovery outside accepted recovery limits

B Analyte detected in the associated Method Blank
H Holding times for preparation or analysis exceeded
ND Not Detected at the Reporting Limit
P Sample pH Not In Range
RL Reporting Detection Limit

QC SUMMARY REPORT

Hall Environmental Analysis Laboratory, Inc.

WO#: 1502A67

11-Mar-15

Client: Animas Environmental
Project: CoP Southeast Cha Cha #38

Sample ID	5ML RB	SampType: MBLK			TestCode: EPA Method 8021B: Volatiles					
Client ID:	PBS	Batch ID: R24570			RunNo: 24570					
Prep Date:		Analysis Date: 2/27/2015			SeqNo: 723606		Units: mg/Kg			
Analyte	Result	PQL	SPK value	SPK Ref Val	%REC	LowLimit	HighLimit	%RPD	RPDLimit	Qual
Benzene	ND	0.050								
Toluene	ND	0.050								
Ethylbenzene	ND	0.050								
Xylenes, Total	ND	0.10								
Surr: 4-Bromofluorobenzene	0.98		1.000		98.3	80	120			

Sample ID	100NG BTEX LCS	SampType: LCS			TestCode: EPA Method 8021B: Volatiles					
Client ID:	LCSS	Batch ID: R24570			RunNo: 24570					
Prep Date:		Analysis Date: 2/27/2015			SeqNo: 723607		Units: mg/Kg			
Analyte	Result	PQL	SPK value	SPK Ref Val	%REC	LowLimit	HighLimit	%RPD	RPDLimit	Qual
Benzene	1.2	0.050	1.000	0	118	80	120			
Toluene	1.2	0.050	1.000	0	117	80	120			
Ethylbenzene	1.2	0.050	1.000	0	116	80	120			
Xylenes, Total	3.4	0.10	3.000	0	114	80	120			
Surr: 4-Bromofluorobenzene	1.0		1.000		104	80	120			

Sample ID	1502A67-001AMS	SampType: MS			TestCode: EPA Method 8021B: Volatiles					
Client ID:	SC-1	Batch ID: R24570			RunNo: 24570					
Prep Date:		Analysis Date: 2/27/2015			SeqNo: 723609		Units: mg/Kg			
Analyte	Result	PQL	SPK value	SPK Ref Val	%REC	LowLimit	HighLimit	%RPD	RPDLimit	Qual
Benzene	0.82	0.034	0.6826	0.005584	119	69.2	126			
Toluene	0.79	0.034	0.6826	0.02687	112	65.6	128			
Ethylbenzene	0.80	0.034	0.6826	0.01506	114	65.5	138			
Xylenes, Total	2.4	0.068	2.048	0.05466	114	63	139			
Surr: 4-Bromofluorobenzene	0.75		0.6826		110	80	120			

Sample ID	1502A67-001AMSD	SampType:	MSD	TestCode:	EPA Method 8021B: Volatiles					
Client ID:	SC-1	Batch ID:	R24570	RunNo:	24570					
Prep Date:		Analysis Date:	2/27/2015	SeqNo:	723610	Units:	mg/Kg			
Analyte	Result	PQL	SPK value	SPK Ref Val	%REC	LowLimit	HighLimit	%RPD	RPDLimit	Qual
Benzene	0.86	0.034	0.6826	0.005584	125	69.2	126	4.50	18.5	
Toluene	0.84	0.034	0.6826	0.02687	119	65.6	128	5.76	20.6	
Ethylbenzene	0.83	0.034	0.6826	0.01506	119	65.5	138	3.62	20.1	
Xylenes, Total	2.5	0.068	2.048	0.05466	119	63	139	3.89	21.1	
Surr: 4-Bromofluorobenzene	0.75		0.6826		110	80	120	0	0	

Qualifiers:

- | | |
|---------------------------------------------------|------------------------------------------------------|
| * Value exceeds Maximum Contaminant Level. | B Analyte detected in the associated Method Blank |
| E Value above quantitation range | H Holding times for preparation or analysis exceeded |
| J Analyte detected below quantitation limits | ND Not Detected at the Reporting Limit |
| O RSD is greater than RSDlimit | P Sample pH Not In Range |
| R RPD outside accepted recovery limits | RL Reporting Detection Limit |
| S Spike Recovery outside accepted recovery limits | |



Hall Environmental Analysis Laboratory
4901 Hawkins NE
Albuquerque, NM 87109
TEL: 505-345-3975 FAX: 505-345-4107
Website: www.hallenvironmental.com

Sample Log-In Check List

Client Name: Animas Environmental

Work Order Number: 1502A67

RcptNo: 1

Received by/date:

AT 02/26/15

Logged By: Anne Thorne

2/26/2015 7:50:00 AM

Anne Thorne

Completed By: Anne Thorne

2/26/2015

Anne Thorne

Reviewed By:

JA

02/26/15

Chain of Custody

1. Custody seals intact on sample bottles? Yes ☐ No ☐ Not Present ☒
2. Is Chain of Custody complete? Yes ☒ No ☐ Not Present ☐
3. How was the sample delivered? Courier

Log In

4. Was an attempt made to cool the samples? Yes ☒ No ☐ NA ☐
5. Were all samples received at a temperature of $>0^{\circ}\text{C}$ to 6.0°C ? Yes ☒ No ☐ NA ☐
6. Sample(s) in proper container(s)? Yes ☒ No ☐
7. Sufficient sample volume for indicated test(s)? Yes ☒ No ☐
8. Are samples (except VOA and ONG) properly preserved? Yes ☒ No ☐
9. Was preservative added to bottles? Yes ☐ No ☒ NA ☐
10. VOA vials have zero headspace? Yes ☐ No ☐ No VOA Vials ☒
11. Were any sample containers received broken? Yes ☐ No ☒
12. Does paperwork match bottle labels?
(Note discrepancies on chain of custody) Yes ☒ No ☐
13. Are matrices correctly identified on Chain of Custody? Yes ☒ No ☐
14. Is it clear what analyses were requested? Yes ☒ No ☐
15. Were all holding times able to be met?
(If no, notify customer for authorization.) Yes ☒ No ☐
- # of preserved bottles checked for pH: _____
(<2 or >12 unless noted)
Adjusted? _____
Checked by: _____

Special Handling (if applicable)

16. Was client notified of all discrepancies with this order? Yes ☐ No ☐ NA ☒

Person Notified: _____

Date: _____

By Whom: _____

Via: ☐ eMail ☐ Phone ☐ Fax ☐ In Person

Regarding: _____

Client Instructions: _____

17. Additional remarks:

18. Cooler Information

Cooler No	Temp $^{\circ}\text{C}$	Condition	Seal Intact	Seal No	Seal Date	Signed By
1	1.0	Good	Yes			





