

Submit 1 Copy To Appropriate District Office  
District I - (575) 393-6161  
1625 N. French Dr., Hobbs, NM 88240  
District II - (575) 748-1283  
811 S. First St., Artesia, NM 88210  
District III - (505) 334-6178  
1000 Rio Brazos Rd., Aztec, NM 87410  
District IV - (505) 476-3460  
1220 S. St. Francis Dr., Santa Fe, NM 87505

State of New Mexico  
Energy, Minerals and Natural Resources

Form C-103  
Revised July 18, 2013

OIL CONSERVATION DIVISION  
1220 South St. Francis Dr.  
Santa Fe, NM 87505

WELL API NO.

30-045-23643

5. Indicate Type of Lease

STATE ☐ FEE ☒

6. State Oil & Gas Lease No.

SUNDRY NOTICES AND REPORTS ON WELLS

(DO NOT USE THIS FORM FOR PROPOSALS TO DRILL OR TO DEEPEN OR PLUG BACK TO A DIFFERENT RESERVOIR. USE "APPLICATION FOR PERMIT" (FORM C-101) FOR SUCH PROPOSALS.)

1. Type of Well: Oil Well ☐ Gas Well ☒ Other

2. Name of Operator

HILCORP ENERGY COMPANY

3. Address of Operator

382 Road 3100, Aztec, NM 87410

4. Well Location

Unit Letter L 1680 feet from the South line and 1160 feet from the West line

Section 06 Township 31N Range 11W NMPM County San Juan

7. Lease Name or Unit Agreement Name

Grenier

8. Well Number

17E

9. OGRID Number

372171

10. Pool name or Wildcat

Basin Dakota

11. Elevation (Show whether DR, RKB, RT, GR, etc.)

6439' GR

12. Check Appropriate Box to Indicate Nature of Notice, Report or Other Data

NOTICE OF INTENTION TO:

PERFORM REMEDIAL WORK ☐ PLUG AND ABANDON ☐  
TEMPORARILY ABANDON ☐ CHANGE PLANS ☐  
PULL OR ALTER CASING ☐ MULTIPLE COMPL ☐  
DOWNHOLE COMMINGLE ☐  
CLOSED-LOOP SYSTEM ☐  
OTHER: ☒ RECOMPLETE

SUBSEQUENT REPORT OF:

REMEDIAL WORK ☐ ALTERING CASING ☐  
COMMENCE DRILLING OPNS. ☐ P AND A ☐  
CASING/CEMENT JOB ☐  
OTHER: ☐

13. Describe proposed or completed operations. (Clearly state all pertinent details, and give pertinent dates, including estimated date of starting any proposed work). SEE RULE 19.15.7.14 NMAC. For Multiple Completions: Attach wellbore diagram of proposed completion or recompletion.

Hilcorp Energy Company plans to recomplete the subject well in the Mesaverde formation and downhole commingle the existing Dakota with the Mesaverde. Attached please find the MV Plat, recomplete procedure, wellbore schematic and GCP. A DHC application will be filed and approved prior to commingling. A Closed Loop system will be used.

\* See Attached Conditions of Approval

NMOCD

AUG 23 2018

DISTRICT III

Notify NMOCD 24 hrs  
prior to beginning  
operations

I hereby certify that the information above is true and complete to the best of my knowledge and belief.

SIGNATURE

*Amanda Walker*

TITLE Operations / Regulatory Technician DATE 8/21/18

Type or print name Amanda Walker

E-mail address: [mwalker@hilcorp.com](mailto:mwalker@hilcorp.com) PHONE: 505-324-5122

For State Use Only

APPROVED BY:

*Bob Bell*

TITLE

*Int'l Supervisor*

DATE

9/13/18

Conditions of Approval (if any):

\* See Attached PV

**District I**1625 N. French Dr., Hobbs, NM 88240  
Phone:(575) 393-6161 Fax:(575) 393-0720**District II**811 S. First St., Artesia, NM 88210  
Phone:(575) 748-1283 Fax:(575) 748-9720**District III**1000 Rio Brazos Rd., Aztec, NM 87410  
Phone:(505) 334-6178 Fax:(505) 334-6170**District IV**1220 S. St Francis Dr., Santa Fe, NM 87505  
Phone:(505) 476-3470 Fax:(505) 476-3462

**State of New Mexico**  
**Energy, Minerals and Natural**  
**Resources**  
**Oil Conservation Division**  
**1220 S. St Francis Dr.**  
**Santa Fe, NM 87505**

**WELL LOCATION AND ACREAGE DEDICATION PLAT**

1. API Number 30-045-23643	2. Pool Code 72319	3. Pool Name BLANCO-MESAVERDE (PRORATED GAS)
4. Property Code 318535	5. Property Name GRENIER	6. Well No. 017E
7. OGRID No. 372171	8. Operator Name HILCORP ENERGY COMPANY	9. Elevation 6439

**10. Surface Location**

UL - Lot L	Section 6	Township 31N	Range 11W	Lot Idn 6	Feet From 1680	N/S Line S	Feet From 1160	E/W Line W	County SAN JUAN
---------------	--------------	-----------------	--------------	--------------	-------------------	---------------	-------------------	---------------	--------------------

**11. Bottom Hole Location If Different From Surface**

UL - Lot	Section	Township	Range	Lot Idn	Feet From	N/S Line	Feet From	E/W Line	County
12. Dedicated Acres 311.42				13. Joint or Infill	14. Consolidation Code			15. Order No.	

**NO ALLOWABLE WILL BE ASSIGNED TO THIS COMPLETION UNTIL ALL INTERESTS HAVE BEEN CONSOLIDATED OR A NON-STANDARD UNIT HAS BEEN APPROVED BY THE DIVISION**

	<p align="center"><b>OPERATOR CERTIFICATION</b></p> <p><i>I hereby certify that the information contained herein is true and complete to the best of my knowledge and belief, and that this organization either owns a working interest or unleased mineral interest in the land including the proposed bottom hole location(s) or has a right to drill this well at this location pursuant to a contract with an owner of such a mineral or working interest, or to a voluntary pooling agreement or a compulsory pooling order heretofore entered by the division.</i></p> <p>E-Signed By: <i>Amanda Walker</i>  Title: Operations/Regulatory Tech  Date: 8/21/2018</p>
	<p align="center"><b>SURVEYOR CERTIFICATION</b></p> <p><i>I hereby certify that the well location shown on this plat was plotted from field notes of actual surveys made by me or under my supervision, and that the same is true and correct to the best of my belief.</i></p> <p>Surveyed By: Fred B. Kerr Jr.  Date of Survey: 6/19/1979  Certificate Number: 3950</p>



HILCORP ENERGY COMPANY  
GRENIER 17E  
MESA VERDE RECOMPLETION SUNDRY

JOB PROCEDURES

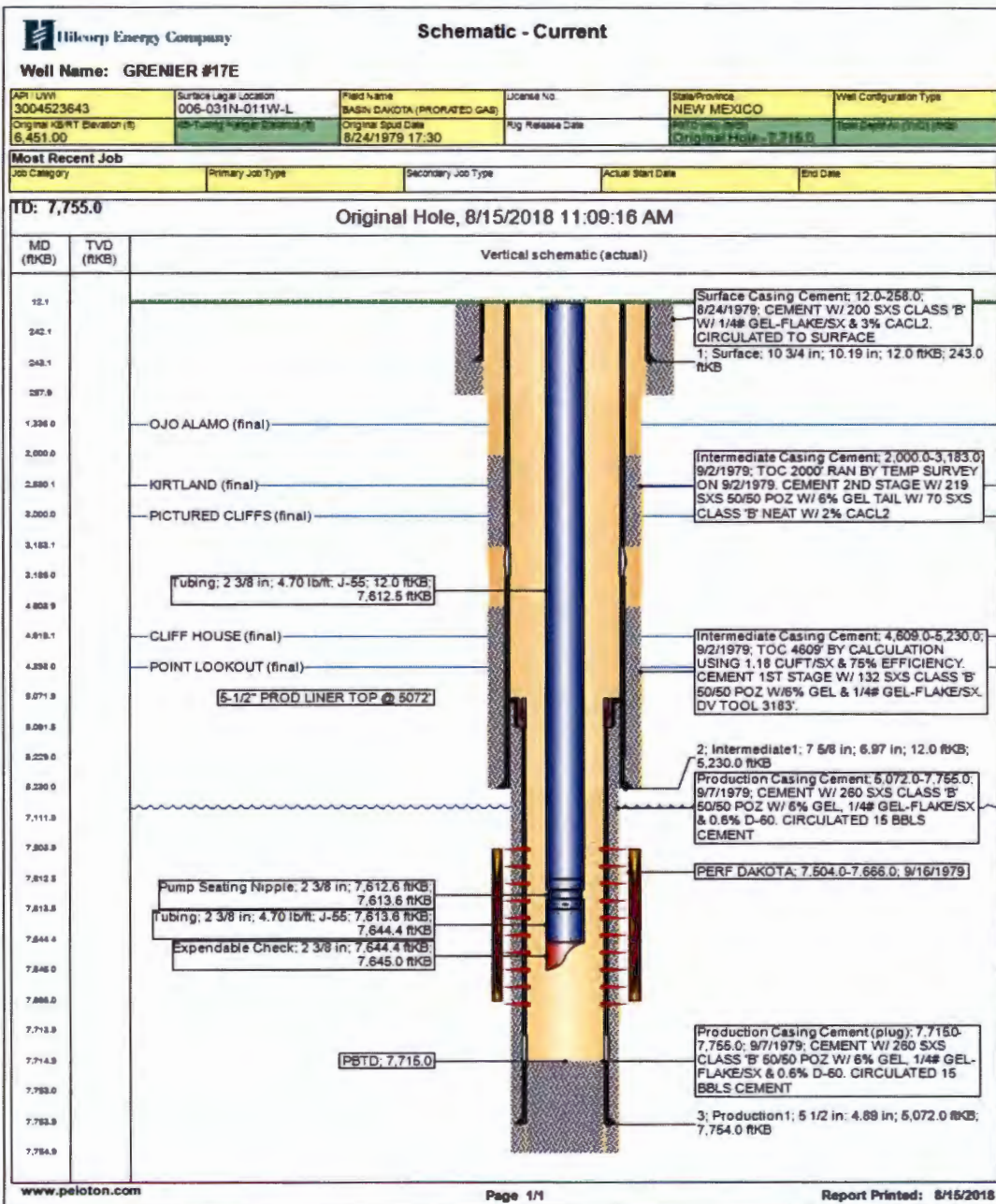
1. MIRU service rig and associated equipment; test BOP.
2. TOOH with **2 3/8"** tubing set at **7,645'**.
3. Set a **5-1/2"** cast iron bridge plug at +/- **5550'** to isolate the Dakota.
4. Load the hole and pressure up on csg to 1000 psi, run CBL.
5. Review CBL with OCD. Determine TOC and sqz. If necessary
6. (If needed) WOC, drill out cement to CIBP.
7. (If needed) Load the hole and run CBL to determine new TOC.
8. Pressure test the casing to frac pressure.
9. N/D BOP, N/U frac stack and test frac stack to frac pressure.
10. Perforate and frac the **Mesa Verde** in two or three stages (Top perforation @ 4,600'; Bottom perforation @ 5,500')
11. Isolate frac stages with a composite bridge plug and set top isolation plug once frac is completed.
12. Nipple down frac stack, nipple up BOP and test.
13. TIH with a mill and drill out top isolation plug and Mesa Verde frac plugs.
14. Clean out to Dakota isolation plug and, when water and sand rates are acceptable, flow test the Mesa Verde.
15. Drill out Dakota isolation plug and cleanout to PBTD of **7,515'**. TOOH.
16. TIH and land production tubing. Get a commingled **Dakota/Mesa Verde** flow rate.





HILCORP ENERGY COMPANY  
GRENIER 17E  
MESA VERDE RECOMPLETION SUNDRY

GRENIER 17E - CURRENT WELLBORE SCHEMATIC





HILCORP ENERGY COMPANY  
GRENIER 17E  
MESA VERDE RECOMPLETION SUNDRY

GRENIER 17E - CURRENT WELLBORE SCHEMATIC

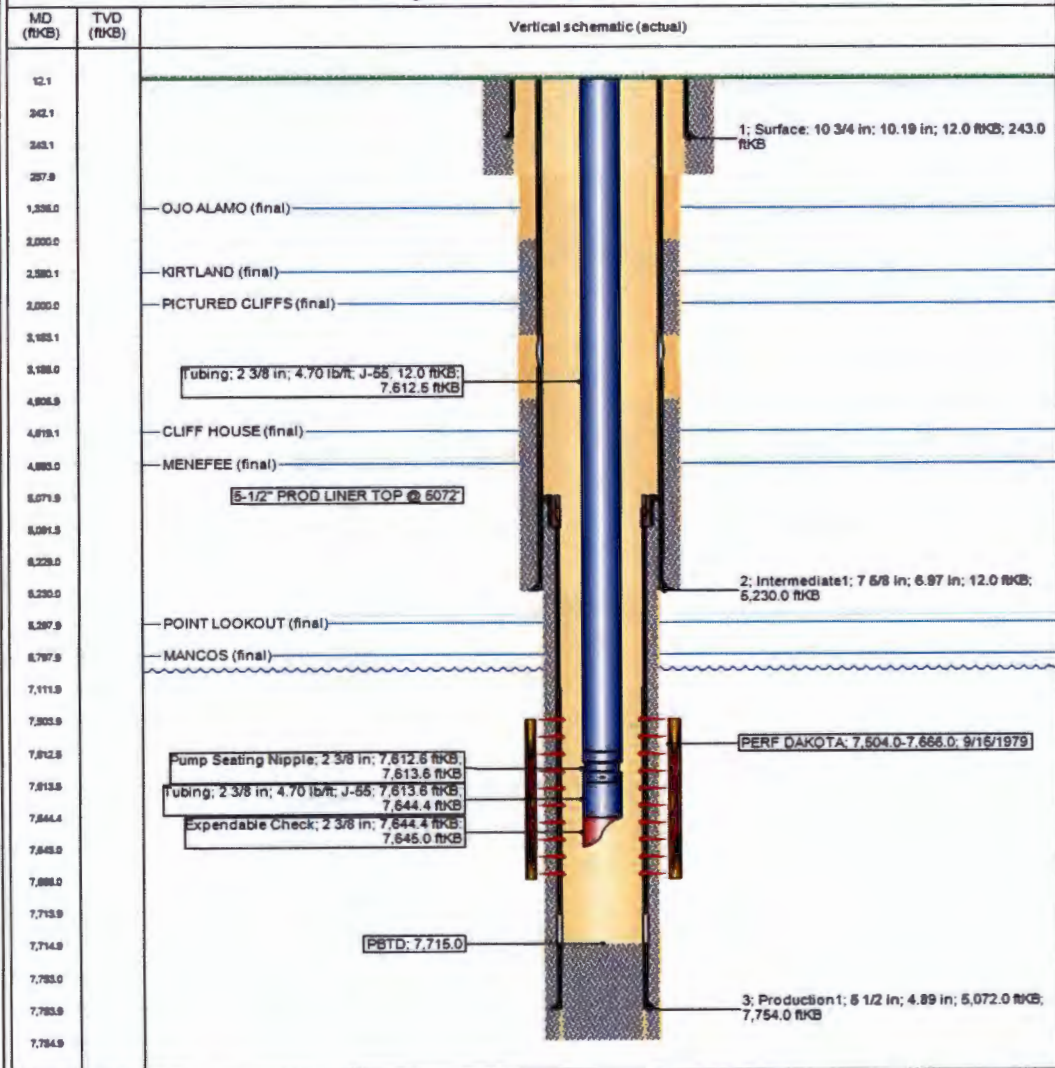
Hilcorp Energy Company

Current Schematic - Version 1

Well Name: GRENIER #17E

API / UWI 3004523643	Surface Leg Location 006-031N-011W-L	Field Name BASIN DAKOTA (PRODUCED GAS)	License No.	State/Province NEW MEXICO	Well Configuration Type
Ground Elevation (ft) 6,439.00	Original KBRT Elevation (ft) 6,451.00	KB-Casing Check (ft) 12.00	KB-Casing Range Check (ft)	KB-Flange Range Check (ft)	

Original Hole, 8/29/2018 5:24:51 AM



www.peloton.com

Page 1/1

Report Printed: 8/29/2018

NMOC

AUG 29 2018

DISTRICT ...

State of New Mexico  
Energy, Minerals and Natural Resources Department

**Susana Martinez**  
Governor

**Ken McQueen**  
Cabinet Secretary

**Matthias Sayer**  
Deputy Cabinet Secretary

**Heather Riley**, Division Director  
Oil Conservation Division



**New Mexico Oil Conservation Division  
Conditions of Approval**

**Well information:**

API WELL #	Well Name	Well #	Operator Name	Type	Stat	County	Surf_Owner	UL	Sec	Twp	N/S	Rng	W/E
30-045-23643-00-00	GRENIER	017E	HILCORP ENERGY COMPANY	G	A	San Juan	P	L	6	31	N	11	W

**Application Type:**

☒ **Recomplete/DHC** (For hydraulic fracturing operations review EPA Underground injection control Guidance #84; Submit Gas Capture Plan form prior to spudding or initiating recompletion operations)

**Conditions of Approval:**

- Notify the OCD 24hrs prior to beginning operations.
- Set cast iron bridge plug (CIBP) inside of cemented casing and at least 500' below the bottom of the proposed perforations. To show adequate formation/cement isolation.
- Perform and submit a cement bond log (CBL) to the OCD for review and approval prior to perforating the formation.
- If needed, submit proposed remediation plan to the OCD for review and approval prior to starting remediation.