

District I
1625 N. French Dr., Hobbs, NM 88240
District II
1301 W. Grand Avenue, Artesia, NM 88210
District III
1000 Rio Brazos Road, Aztec, NM 87410
District IV
1220 S. St. Francis Dr., Santa Fe, NM 87505

State of New Mexico
Energy Minerals and Natural Resources
Department
Oil Conservation Division
1220 South St. Francis Dr.
Santa Fe, NM 87505

Form C-144
July 21, 2008

For temporary pits, closed-loop systems, and below-grade tanks, submit to the appropriate NMOCD District Office.
For permanent pits and exceptions submit to the Santa Fe Environmental Bureau office and provide a copy to the appropriate NMOCD District Office.

**Pit, Closed-Loop System, Below-Grade Tank, or
Proposed Alternative Method Permit or Closure Plan Application**

Type of action: ☐ Permit of a pit, closed-loop system, below-grade tank, or proposed alternative method
☒ Closure of a pit, closed-loop system, below-grade tank, or proposed alternative method
☐ Modification to an existing permit
☐ Closure plan only submitted for an existing permitted or non-permitted pit, closed-loop system, below-grade tank, or proposed alternative method

Instructions: Please submit one application (Form C-144) per individual pit, closed-loop system, below-grade tank or alternative request

Please be advised that approval of this request does not relieve the operator of liability should operations result in pollution of surface water, ground water or the environment. Nor does approval relieve the operator of its responsibility to comply with any other applicable governmental authority's rules, regulations or ordinances.

1. Operator: Williams Operating Co, LLC OGRID #: 120782
Address: PO Box 640 / 721 S Main Aztec, NM 87410
Facility or well name: Cox Canyon #003C
API Number: 30-045-32864 OCD Permit Number: _____
U/L or Qtr/Qtr N Section 9 Township 32N Range 11W County: San Juan
Center of Proposed Design: Latitude 36.992682 Longitude -107.997163 NAD: ☐ 1927 ☒ 1983
Surface Owner: ☒ Federal ☐ State ☐ Private ☐ Tribal Trust or Indian Allotment

2. ☒ **Pit:** Subsection F or G of 19.15.17.11 NMAC
Temporary: ☒ Drilling ☒ Workover
☐ Permanent ☐ Emergency ☐ Cavitation ☐ P&A
☐ Lined ☐ Unlined Liner type: Thickness _____ mil ☐ LLDPE ☐ HDPE ☐ PVC ☐ Other _____
☐ String-Reinforced
Liner Seams: ☐ Welded ☐ Factory ☐ Other _____ Volume: _____ bbl Dimensions: L _____ x W _____ x D _____

3. ☐ **Closed-loop System:** Subsection H of 19.15.17.11 NMAC
Type of Operation: ☐ P&A ☐ Drilling a new well ☐ Workover or Drilling (Applies to activities which require prior approval of a permit or notice of intent)
☐ Drying Pad ☐ Above Ground Steel Tanks ☐ Haul-off Bins ☐ Other _____
☐ Lined ☐ Unlined Liner type: Thickness _____ mil ☐ LLDPE ☐ HDPE ☐ PVC ☐ Other _____
Liner Seams: ☐ Welded ☐ Factory ☐ Other _____

4. ☐ **Below-grade tank:** Subsection I of 19.15.17.11 NMAC
Volume: _____ bbl Type of fluid: _____
Tank Construction material: _____
☒ Secondary containment with leak detection ☐ Visible sidewalls, liner, 6-inch lift and automatic overflow shut-off
☐ Visible sidewalls and liner ☐ Visible sidewalls only ☐ Other _____
Liner type: Thickness _____ mil ☐ HDPE ☐ PVC ☐ Other _____

5. ☐ **Alternative Method:**
Submittal of an exception request is required. Exceptions must be submitted to the Santa Fe Environmental Bureau office for consideration of approval.



6.

Fencing: Subsection D of 19.15.17.11 NMAC (*Applies to permanent pits, temporary pits, and below-grade tanks*)

- ☐ Chain link, six feet in height, two strands of barbed wire at top (*Required if located within 1000 feet of a permanent residence, school, hospital, institution or church*)
- ☐ Four foot height, four strands of barbed wire evenly spaced between one and four feet
- ☒ Alternate. Please specify per BLM specifications

7.

Netting: Subsection E of 19.15.17.11 NMAC (*Applies to permanent pits and permanent open top tanks*)

- ☒ Screen ☐ Netting ☐ Other
- ☐ Monthly inspections (If netting or screening is not physically feasible)

8.

Signs: Subsection C of 19.15.17.11 NMAC

- ☐ 12"x 24", 2" lettering, providing Operator's name, site location, and emergency telephone numbers
- ☒ Signed in compliance with 19.15.3.103 NMAC

9.

Administrative Approvals and Exceptions:

Justifications and/or demonstrations of equivalency are required. Please refer to 19.15.17 NMAC for guidance.

Please check a box if one or more of the following is requested, if not leave blank:

- ☒ Administrative approval(s): Requests must be submitted to the appropriate division district or the Santa Fe Environmental Bureau office for consideration of approval.
- ☐ Exception(s): Requests must be submitted to the Santa Fe Environmental Bureau office for consideration of approval.

10.

Siting Criteria (regarding permitting): 19.15.17.10 NMAC

Instructions: The applicant must demonstrate compliance for each siting criteria below in the application. Recommendations of acceptable source material are provided below. Requests regarding changes to certain siting criteria may require administrative approval from the appropriate district office or may be considered an exception which must be submitted to the Santa Fe Environmental Bureau office for consideration of approval. Applicant must attach justification for request. Please refer to 19.15.17.10 NMAC for guidance. Siting criteria does not apply to drying pads or above-grade tanks associated with a closed-loop system.

Ground water is less than 50 feet below the bottom of the temporary pit, permanent pit, or below-grade tank. - NM Office of the State Engineer - iWATERS database search; USGS; Data obtained from nearby wells	<input type="checkbox"/> Yes <input checked="" type="checkbox"/> No
Within 300 feet of a continuously flowing watercourse, or 200 feet of any other significant watercourse or lakebed, sinkhole, or playa lake (measured from the ordinary high-water mark). - Topographic map; Visual inspection (certification) of the proposed site	<input type="checkbox"/> Yes <input checked="" type="checkbox"/> No
Within 300 feet from a permanent residence, school, hospital, institution, or church in existence at the time of initial application. (Applies to temporary, emergency, or cavitation pits and below-grade tanks) - Visual inspection (certification) of the proposed site; Aerial photo; Satellite image	<input type="checkbox"/> Yes <input checked="" type="checkbox"/> No <input type="checkbox"/> NA
Within 1000 feet from a permanent residence, school, hospital, institution, or church in existence at the time of initial application. (Applies to permanent pits) - Visual inspection (certification) of the proposed site; Aerial photo; Satellite image	<input type="checkbox"/> Yes <input type="checkbox"/> No <input checked="" type="checkbox"/> NA
Within 500 horizontal feet of a private, domestic fresh water well or spring that less than five households use for domestic or stock watering purposes, or within 1000 horizontal feet of any other fresh water well or spring, in existence at the time of initial application. - NM Office of the State Engineer - iWATERS database search; Visual inspection (certification) of the proposed site	<input type="checkbox"/> Yes <input checked="" type="checkbox"/> No
Within incorporated municipal boundaries or within a defined municipal fresh water well field covered under a municipal ordinance adopted pursuant to NMSA 1978, Section 3-27-3, as amended. - Written confirmation or verification from the municipality; Written approval obtained from the municipality	<input type="checkbox"/> Yes <input checked="" type="checkbox"/> No
Within 500 feet of a wetland. - US Fish and Wildlife Wetland Identification map; Topographic map; Visual inspection (certification) of the proposed site	<input type="checkbox"/> Yes <input checked="" type="checkbox"/> No
Within the area overlying a subsurface mine. - Written confirmation or verification or map from the NM EMNRD-Mining and Mineral Division	<input type="checkbox"/> Yes <input checked="" type="checkbox"/> No
Within an unstable area. - Engineering measures incorporated into the design; NM Bureau of Geology & Mineral Resources; USGS; NM Geological Society; Topographic map	<input type="checkbox"/> Yes <input checked="" type="checkbox"/> No
Within a 100-year floodplain. - FEMA map	<input type="checkbox"/> Yes <input checked="" type="checkbox"/> No

11.

Temporary Pits, Emergency Pits, and Below-grade Tanks Permit Application Attachment Checklist: Subsection B of 19.15.17.9 NMAC**Instructions:** Each of the following items must be attached to the application. Please indicate, by a check mark in the box, that the documents are attached.

- ☒ Hydrogeologic Report (Below-grade Tanks) - based upon the requirements of Paragraph (4) of Subsection B of 19.15.17.9 NMAC
- ☒ Hydrogeologic Data (Temporary and Emergency Pits) - based upon the requirements of Paragraph (2) of Subsection B of 19.15.17.9 NMAC
- ☒ Siting Criteria Compliance Demonstrations - based upon the appropriate requirements of 19.15.17.10 NMAC
- ☒ Design Plan - based upon the appropriate requirements of 19.15.17.11 NMAC
- ☒ Operating and Maintenance Plan - based upon the appropriate requirements of 19.15.17.12 NMAC
- ☒ Closure Plan (Please complete Boxes 14 through 18, if applicable) - based upon the appropriate requirements of Subsection C of 19.15.17.9 NMAC and 19.15.17.13 NMAC

☐ Previously Approved Design (attach copy of design) API Number: _____ or Permit Number: _____

12.

Closed-loop Systems Permit Application Attachment Checklist: Subsection B of 19.15.17.9 NMAC**Instructions:** Each of the following items must be attached to the application. Please indicate, by a check mark in the box, that the documents are attached.

- ☐ Geologic and Hydrogeologic Data (only for on-site closure) - based upon the requirements of Paragraph (3) of Subsection B of 19.15.17.9 NMAC
- ☐ Siting Criteria Compliance Demonstrations (only for on-site closure) - based upon the appropriate requirements of 19.15.17.10 NMAC
- ☐ Design Plan - based upon the appropriate requirements of 19.15.17.11 NMAC
- ☐ Operating and Maintenance Plan - based upon the appropriate requirements of 19.15.17.12 NMAC
- ☐ Closure Plan (Please complete Boxes 14 through 18, if applicable) - based upon the appropriate requirements of Subsection C of 19.15.17.9 NMAC and 19.15.17.13 NMAC

☐ Previously Approved Design (attach copy of design) API Number: _____

☐ Previously Approved Operating and Maintenance Plan API Number: _____ (Applies only to closed-loop system that use above ground steel tanks or haul-off bins and propose to implement waste removal for closure)

13.

Permanent Pits Permit Application Checklist: Subsection B of 19.15.17.9 NMAC**Instructions:** Each of the following items must be attached to the application. Please indicate, by a check mark in the box, that the documents are attached.

- ☐ Hydrogeologic Report - based upon the requirements of Paragraph (1) of Subsection B of 19.15.17.9 NMAC
- ☐ Siting Criteria Compliance Demonstrations - based upon the appropriate requirements of 19.15.17.10 NMAC
- ☐ Climatological Factors Assessment
- ☐ Certified Engineering Design Plans - based upon the appropriate requirements of 19.15.17.11 NMAC
- ☐ Dike Protection and Structural Integrity Design - based upon the appropriate requirements of 19.15.17.11 NMAC
- ☐ Leak Detection Design - based upon the appropriate requirements of 19.15.17.11 NMAC
- ☐ Liner Specifications and Compatibility Assessment - based upon the appropriate requirements of 19.15.17.11 NMAC
- ☐ Quality Control/Quality Assurance Construction and Installation Plan
- ☐ Operating and Maintenance Plan - based upon the appropriate requirements of 19.15.17.12 NMAC
- ☐ Freeboard and Overtopping Prevention Plan - based upon the appropriate requirements of 19.15.17.11 NMAC
- ☐ Nuisance or Hazardous Odors, including H₂S, Prevention Plan
- ☐ Emergency Response Plan
- ☐ Oil Field Waste Stream Characterization
- ☐ Monitoring and Inspection Plan
- ☐ Erosion Control Plan
- ☐ Closure Plan - based upon the appropriate requirements of Subsection C of 19.15.17.9 NMAC and 19.15.17.13 NMAC

14.

Proposed Closure: 19.15.17.13 NMAC**Instructions:** Please complete the applicable boxes, Boxes 14 through 18, in regards to the proposed closure plan.

Type: ☒ Drilling ☒ Workover ☐ Emergency ☐ Cavitation ☐ P&A ☐ Permanent Pit ☐ Below-grade Tank ☐ Closed-loop System

☐ Alternative

Proposed Closure Method: ☒ Waste Excavation and Removal

☐ Waste Removal (Closed-loop systems only)

☐ On-site Closure Method (Only for temporary pits and closed-loop systems)

☐ In-place Burial ☐ On-site Trench Burial

☐ Alternative Closure Method (Exceptions must be submitted to the Santa Fe Environmental Bureau for consideration)

15.

Waste Excavation and Removal Closure Plan Checklist: (19.15.17.13 NMAC) **Instructions:** Each of the following items must be attached to the closure plan. Please indicate, by a check mark in the box, that the documents are attached.

- ☒ Protocols and Procedures - based upon the appropriate requirements of 19.15.17.13 NMAC
- ☒ Confirmation Sampling Plan (if applicable) - based upon the appropriate requirements of Subsection F of 19.15.17.13 NMAC
- ☒ Disposal Facility Name and Permit Number (for liquids, drilling fluids and drill cuttings)
- ☒ Soil Backfill and Cover Design Specifications - based upon the appropriate requirements of Subsection H of 19.15.17.13 NMAC
- ☒ Re-vegetation Plan - based upon the appropriate requirements of Subsection I of 19.15.17.13 NMAC
- ☒ Site Reclamation Plan - based upon the appropriate requirements of Subsection G of 19.15.17.13 NMAC

16.

Waste Removal Closure For Closed-loop Systems That Utilize Above Ground Steel Tanks or Haul-off Bins Only: (19.15.17.13.D NMAC)

Instructions: Please identify the facility or facilities for the disposal of liquids, drilling fluids and drill cuttings. Use attachment if more than two facilities are required.

Disposal Facility Name: _____ Disposal Facility Permit Number: _____

Disposal Facility Name: _____ Disposal Facility Permit Number: _____

Will any of the proposed closed-loop system operations and associated activities occur on or in areas that *will not* be used for future service and operations?

☐ Yes (If yes, please provide the information below) ☐ No

Required for impacted areas which will not be used for future service and operations:

☐ Soil Backfill and Cover Design Specifications - based upon the appropriate requirements of Subsection H of 19.15.17.13 NMAC

☐ Re-vegetation Plan - based upon the appropriate requirements of Subsection I of 19.15.17.13 NMAC

☐ Site Reclamation Plan - based upon the appropriate requirements of Subsection G of 19.15.17.13 NMAC

17.

Siting Criteria (regarding on-site closure methods only): 19.15.17.10 NMAC

Instructions: Each siting criteria requires a demonstration of compliance in the closure plan. Recommendations of acceptable source material are provided below. Requests regarding changes to certain siting criteria may require administrative approval from the appropriate district office or may be considered an exception which must be submitted to the Santa Fe Environmental Bureau office for consideration of approval. Justifications and/or demonstrations of equivalency are required. Please refer to 19.15.17.10 NMAC for guidance.

Ground water is less than 50 feet below the bottom of the buried waste.

- NM Office of the State Engineer - iWATERS database search; USGS; Data obtained from nearby wells

☐ Yes ☒ No
☐ NA

Ground water is between 50 and 100 feet below the bottom of the buried waste

- NM Office of the State Engineer - iWATERS database search; USGS; Data obtained from nearby wells

☐ Yes ☒ No
☐ NA

Ground water is more than 100 feet below the bottom of the buried waste.

- NM Office of the State Engineer - iWATERS database search; USGS; Data obtained from nearby wells

☒ Yes ☐ No
☐ NA

Within 300 feet of a continuously flowing watercourse, or 200 feet of any other significant watercourse or lakebed, sinkhole, or playa lake (measured from the ordinary high-water mark).

- Topographic map; Visual inspection (certification) of the proposed site

☐ Yes ☒ No

Within 300 feet from a permanent residence, school, hospital, institution, or church in existence at the time of initial application.

- Visual inspection (certification) of the proposed site; Aerial photo; Satellite image

☐ Yes ☒ No

Within 500 horizontal feet of a private, domestic fresh water well or spring that less than five households use for domestic or stock watering purposes, or within 1000 horizontal feet of any other fresh water well or spring, in existence at the time of initial application.

- NM Office of the State Engineer - iWATERS database; Visual inspection (certification) of the proposed site

☐ Yes ☒ No

Within incorporated municipal boundaries or within a defined municipal fresh water well field covered under a municipal ordinance adopted pursuant to NMSA 1978, Section 3-27-3, as amended.

- Written confirmation or verification from the municipality; Written approval obtained from the municipality

☐ Yes ☒ No

Within 500 feet of a wetland.

- US Fish and Wildlife Wetland Identification map; Topographic map; Visual inspection (certification) of the proposed site

☐ Yes ☒ No

Within the area overlying a subsurface mine.

- Written confirmation or verification or map from the NM EMNRD-Mining and Mineral Division

☐ Yes ☒ No

Within an unstable area.

- Engineering measures incorporated into the design; NM Bureau of Geology & Mineral Resources; USGS; NM Geological Society; Topographic map

☐ Yes ☒ No

Within a 100-year floodplain.

- FEMA map

☐ Yes ☒ No

18.

On-Site Closure Plan Checklist: (19.15.17.13 NMAC) **Instructions:** Each of the following items must be attached to the closure plan. Please indicate, by a check mark in the box, that the documents are attached.

☒ Siting Criteria Compliance Demonstrations - based upon the appropriate requirements of 19.15.17.10 NMAC

☒ Proof of Surface Owner Notice - based upon the appropriate requirements of Subsection F of 19.15.17.13 NMAC

☒ Construction/Design Plan of Burial Trench (if applicable) based upon the appropriate requirements of 19.15.17.11 NMAC

☒ Construction/Design Plan of Temporary Pit (for in-place burial of a drying pad) - based upon the appropriate requirements of 19.15.17.11 NMAC

☒ Protocols and Procedures - based upon the appropriate requirements of 19.15.17.13 NMAC

☒ Confirmation Sampling Plan (if applicable) - based upon the appropriate requirements of Subsection F of 19.15.17.13 NMAC

☐ Waste Material Sampling Plan - based upon the appropriate requirements of Subsection F of 19.15.17.13 NMAC

☒ Disposal Facility Name and Permit Number (for liquids, drilling fluids and drill cuttings or in case on-site closure standards cannot be achieved)

☒ Soil Cover Design - based upon the appropriate requirements of Subsection H of 19.15.17.13 NMAC

☒ Re-vegetation Plan - based upon the appropriate requirements of Subsection I of 19.15.17.13 NMAC

☒ Site Reclamation Plan - based upon the appropriate requirements of Subsection G of 19.15.17.13 NMAC

19.

Operator Application Certification:

I hereby certify that the information submitted with this application is true, accurate and complete to the best of my knowledge and belief.

Name (Print): _____ Title: _____

Signature: _____ Date: _____

e-mail address: _____ Telephone: _____

20.

OCD Approval: ☐ Permit Application (including closure plan) ☒ Closure Plan (only) ☐ OCD Conditions (see attachment)

OCD Representative Signature: [Signature] Approval Date: 9/02/2011

Title: Compliance Officer OCD Permit Number: _____

21.

Closure Report (required within 60 days of closure completion): Subsection K of 19.15.17.13 NMAC

Instructions: Operators are required to obtain an approved closure plan prior to implementing any closure activities and submitting the closure report. The closure report is required to be submitted to the division within 60 days of the completion of the closure activities. Please do not complete this section of the form until an approved closure plan has been obtained and the closure activities have been completed.

☒ Closure Completion Date: 10/11/10

22.

Closure Method:

☐ Waste Excavation and Removal ☒ On-Site Closure Method ☐ Alternative Closure Method ☐ Waste Removal (Closed-loop systems only)
☐ If different from approved plan, please explain.

23.

Closure Report Regarding Waste Removal Closure For Closed-loop Systems That Utilize Above Ground Steel Tanks or Haul-off Bins Only:

Instructions: Please identify the facility or facilities for where the liquids, drilling fluids and drill cuttings were disposed. Use attachment if more than two facilities were utilized.

Disposal Facility Name: _____ Disposal Facility Permit Number: _____

Disposal Facility Name: _____ Disposal Facility Permit Number: _____

Were the closed-loop system operations and associated activities performed on or in areas that *will not* be used for future service and operations?

☐ Yes (If yes, please demonstrate compliance to the items below) ☐ No

Required for impacted areas which will not be used for future service and operations:

- ☐ Site Reclamation (Photo Documentation)
☐ Soil Backfilling and Cover Installation
☐ Re-vegetation Application Rates and Seeding Technique

24.

Closure Report Attachment Checklist: *Instructions: Each of the following items must be attached to the closure report. Please indicate, by a check mark in the box, that the documents are attached.*

- ☒ Proof of Closure Notice (surface owner and division)
☐ Proof of Deed Notice (required for on-site closure)
☒ Plot Plan (for on-site closures and temporary pits)
☒ Confirmation Sampling Analytical Results (if applicable)
☒ Waste Material Sampling Analytical Results (required for on-site closure)
☒ Disposal Facility Name and Permit Number
☒ Soil Backfilling and Cover Installation
☒ Re-vegetation Application Rates and Seeding Technique
☒ Site Reclamation (Photo Documentation)

On-site Closure Location: Latitude 36.992682 Longitude -107.997163 NAD: ☐ 1927 ☒ 1983

25.

Operator Closure Certification:

I hereby certify that the information and attachments submitted with this closure report is true, accurate and complete to the best of my knowledge and belief. I also certify that the closure complies with all applicable closure requirements and conditions specified in the approved closure plan.

Name (Print): Vanessa Fields Title: EH&S Coordinator

Signature: [Signature] Date: 12/02/2010

e-mail address: vanessa.fields@williams.com Telephone: 505-634-4209

Williams Production Co., LLC
San Juan Basin: New Mexico Assets
Temporary Pit In-place Closure Report
Drilling/Completion and Workover
(Groundwater >100 feet bgs)

Well: Cox Canyon Unit #003 C
API No: 30-04532864
Location: N-S#09-T# 32#N-R#11W, NMPM

In accordance with Rule 19.15.17.13 NMAC, the following plan describes the general in-place closure requirements of temporary pits on Williams Production Co, LLC (WPX) locations in the San Juan Basin of New Mexico. This is WPX's standard procedure for all temporary pits to be utilized for the drilling, completion and/or workovers of oil and gas wells operated by WPX. For those temporary pits which do not conform to this standard closure plan, a separate well/pit specific closure plan will be developed and utilized.

All closure activities will include proper documentation and will be submitted to OCD within 60 days of the pit closure on a Closure Report using Division Form C-144. The Report will include the following:

- Details on Capping and Covering, where applicable
- Plot Plan (Pit Diagram)
- Inspection reports
- Sampling Results
- Division Form C-105: *WELL COMPLETION OR RECOMPLETION REPORT AND LOG*
- Copy of Deed Notice filed with the County Clerk (format to meet County requirements)
A deed notice is not required on state, federal or tribal land according to NMOCD FAQ dated October 30, 2008 and posted on the NMOCD website.

General Plan Requirements:

1. All free standing liquids will be removed from the pit at the start of the closure process. Liquids will be removed in a manner that the appropriate District Office approves including; recycled, reused, reclaimed, evaporated, and/or disposed of in a Division-approved facility. Once all free liquids are removed, the sludge will be stabilized by one of the following methods depending on equipment availability: blending with clean stockpiled soils or dewatering using a Bowl Decanter Centrifuge then blending with clean stockpiles soils.

To the extent practical, free liquids were pulled from the reserve pit following the completion rigoff. Haul dates were from (date) to (Rosa Unit SWD 31 Order: SWD-916, API:30-039-27055

2. The preferred method of closure for all temporary pits will be on-site closure by in-place burial, provided all the criteria in 19.15.17.13.B are met.

On-site burial plan for this location was approved by the Aztec District Office on permitted prior to pit rule.

3. The surface owner shall be notified of WPX's proposed closure plan using a means that provides proof of notice (i.e. certified mail/return receipt requested)

Williams notified the SMA of its intent to use a temporary pit and onsite burial in the Surface Use Plan in the well APD. The SMA was notified by email see attached. No return receipt required per BLM:FFO/NMOCD MOU dated 5/4/09.

4. Within six months of the "rig-off" status occurring WPX will ensure that the temporary pit is covered, recontoured and reseeding in progress.

Drill rig-off Request for transfer to completion rig submitted to OCD Aztec District Office, Completion rig-off Pit covered Pit area along with unused portions of well pad to be interim reclaimed in accordance with Surface Management Agency requirements in APD-COAs and per BLM:FFO/NMOCD MOU dated 5/4/09.

5. Notice of Closure will be given to the Aztec District office between 72 hours and one week of the scheduled closure via email or phone. The notification of closure will include the following:

- a. Operators Name (WPX)
- b. Well Name and API Number
- c. Location (USTR)

The Aztec District Office of NMOCD was notified by email using a format acceptable to the District. Copies of the notification from Abode Contractors on(9/9/2010) is attached.

6. The pit liner shall be removed above "mud level" after stabilization. Removal of the liner will consist of manually or mechanically cutting the liner at the mud level and removing all remaining liner. Care will be taken to remove "all" of the liner (i.e. anchored material). All excessive liner will be disposed of at a licensed disposal facility (probably San Juan Regional Landfill operated by Waste Management under NMED Permit SWM-052426).

The liner to the temporary pit was removed above the "mud level" once stabilized. Removal of the liner consisted of manually cutting the liner and removing all remaining liner material above the "mud level" including the anchor material. All excessive liner was disposed of at the San Juan Regional Landfill operated by Waste Management under NMED Permit SWM-052426.

7. Solidification of the remaining pit contents shall be achieved by mixing non-waste containing, earthen material. The solidification process will be accomplished use a combination of natural drying and mechanical mixing. Pit contents will be mixed with non-waste, earthen material to a consistency that is deemed safe and stable. The mixing ratio shall not exceed 3 parts non-waste to 1 part pit contents.

Following removal of free liquids, the pit contents were mixed with non-waste containing, earthen material in order to achieve appropriate solidification and a consistency that was deemed safe and stable. The solidification process was accomplished using a combination of natural drying, a Bowl Decanter Centrifuge, and mechanically mixing using a dozer and trackhoe. The mixing ration was approximately 2.5-3 parts native soil to 1 part pit contents. Solidification was completed (10/5/2010).

8. A five-point composite sample will be taken of the pit using sampling tools and all samples tested per 19.15.17.13(B)(1)(b) NMAC. In the event that the criteria are not met (See Table 1), all contents will be handled per 19.15.17.13(B)(1)(a) (i.e. dig and haul to a Division-approved facility). Approval to haul will be requested of the Aztec District office prior to initiation.

A five-point composite sampling was taken of the pit area using sampling tools and the sample was tested per 19.15.17.13(B)(1)(b) NMAC. Results are shown in Table 1 and lab reports are attached.

Table 1: Closure Criteria for Temporary Pits in Non-sensitive Areas with Groundwater >100 bgs.

Components	Testing Methods	Limits (mg/Kg)	Pit (mg/Kg)
Benzene	EPA SW-846 Method 8021B or 8260B	0.2	ND
BTEX	EPA SW-846 Method 8021B or 8260B	50	0.007
TPH	EPA SW-846 Method 418.1	2500	31.5
GRO/DRO	EPA SW-846 Method 8015M (GRO/DRO)	500	ND
Chlorides	EPA SW-846 Method 300.1	500	25

9. Upon completion of solidification and testing, the pit area will be backfilled with non-waste earthen material compacted to native conditions to enable effective revegetation for successful evapotranspiration. A minimum of four feet of cover including replacement of one foot of suitable material to establish vegetation, or the background thickness of topsoil, whichever is greater.

Upon completion of solidification and testing, the pit area was backfilled with non-waste earthen material compacted to native conditions. A minimum of four feet of cover to the extent practical was achieved and the cover included just over a foot of topsoil suitable to establish vegetation.

10. Following cover, the site will be recontoured to meet the Surface Management Agency or surface owner requirements. Re-contouring will attempt to match fit, shape, line form, and texture of the surrounding geography. Re-shaping will include drainage control, prevent ponding, and minimize erosion. Natural drainages will be unimpeded and stormwater Best Management Practices (BMPs) will be used to aid in soil stabilization and protection surface water quality.

Following cover, Williams reestablished drainage and contours to approximately match previous topography meeting the Conditions of Approval in the APD and the direction offered by a BLM/USFS inspector. Cover and re-contouring were completed.

11. Notification will be sent to the Aztec District office when the reclaimed area is seeded. Williams will comply with Surface Management Agency reseeding requirements in the COAs of the APD for the referenced well, per BLM:FFO/NMOCD MOU dated 5/4/09.

12. WPX shall seed the disturbed areas the first growing season after the pit is covered. Seeding will be accomplished via drilling on the contour whenever practical, or by other Division-approved methods.

Vegetative cover will equal 70% of the native perennial vegetative cover (un-impacted) consisting of at least three native plant species, including at least one grass, but not including noxious weeds, and maintained that cover through two successive growing seasons. Repeat seeding or planting will be continued until successful vegetative growth occurs. *Note: WPX assumes the seeding stipulations including mix and seeding methods specified by the Surface Management Agency (BLM, BOR, USFS, Tribal, etc.) or Land owner as part of a surface use agreement or APD are Division-approved methods unless notified by the Division of their unacceptability.*

Williams will comply with Surface Management Agency reseeding requirements in the COAs of the APD for the referenced well, per BLM:FFO/NMOCD MOU dated 5/4/09.

13. The temporary pit will be located with a steel marker, no less than four inches in diameter, cemented in a hole three feet deep in the center of the onsite burial upon the abandonment of all wells on the pad. The marker will be flush with the ground to allow access of the active well pad and for safety concerns. The marker will include a threaded collar to be used for future abandonment. The top of the marker will contain a welded steel 12" square plate that indicates the onsite burial of the temporary pit. The plate will be easily removable and a four-foot tall riser will be threaded into the top of the collar marker and welded around the base with the operations information at the time of all wells on the pad abandoned. The information will include Operator Name, Lease Name, Well Name, and number, USTR, and an indicator that the marker is an onsite pit burial location.

The temporary pit was located with a steel marker meeting the above listed specifications. The marker has the following information welded for future reference: Williams Production, NMSF-078768, S09-T32N-R11W-F, "Pit Burial" (photo attached). Steel marker set (10/5/2010).

Fields, Vanessa

From: johnny@adobecontractorsinc.com
Sent: Thursday, September 09, 2010 4:12 PM
To: Brandon Powell
Cc: Lane, Myke; Meador, Tasha; Fields, Vanessa
Subject: Williams clean up Cox Canyon #3C

Brandon,

We will be ready to start the clean up on the Cox Canyon #3C by next Tuesday. Let me know if you have any questions.

Thanks,

Johnny Stinson
Gen. Manager/ Adobe Contractors
Office: (505)632-1486
Mobile: (505)320-6076
johnny@adobecontractorsinc.com

Submit 3 Copies To Appropriate District Office
District I
1625 N. French Dr., Hobbs, NM 88240
District II
1301 W. Grand Ave., Artesia, NM 88210
District III
1000 Rio Brazos Rd., Aztec, NM 87410
District IV
1220 S. St. Francis Dr., Santa Fe, NM 87505

State of New Mexico
Energy, Minerals and Natural Resources

OIL CONSERVATION DIVISION
1220 South St. Francis Dr.
Santa Fe, NM 87505

Form C-103
May 27, 2004

SUNDRY NOTICES AND REPORTS ON WELLS (DO NOT USE THIS FORM FOR PROPOSALS TO DRILL OR TO DEEPEN OR PLUG BACK TO A DIFFERENT RESERVOIR. USE "APPLICATION FOR PERMIT" (FORM C-101) FOR SUCH PROPOSALS.)		WELL API NO. <u>30-045-32864</u>
1. Type of Well: Oil Well Gas Well <input checked="" type="checkbox"/> Other		5. Indicate Type of Lease Federal
2. Name of Operator Williams Production Company		6. State Oil & Gas Lease No. NM 03189
3. Address of Operator P.O. Box 316, Ignacio, CO 81137		7. Lease Name or Unit Agreement Name Cox Canyon Unit
4. Well Location Unit Letter <u>N</u> <u>180</u> feet from the <u>South</u> line and <u>1,745</u> feet from the <u>West</u> line Section <u>9</u> Township <u>32N</u> Range <u>11W</u> NMPM County <u>San Juan</u>		8. Well Number <u>#3C</u>
11. Elevation (Show whether DR, RKB, RT, GR, etc.) <u>6625' GR</u>		9. OGRID Number <u>120782</u>
Pit or Below-grade Tank Application <input checked="" type="checkbox"/> or Closure		
Pit type <u>Drilling</u> Depth to Groundwater <u>110-180'</u> Distance from nearest fresh water well <u>>3,000'</u> Distance from nearest surface water <u>1,600'</u>		
Pit Liner Thickness <u>12</u> mil Below-Grade Tank: Volume <u>10,971</u> bbls; Construction Material: <u>Native</u>		

12. Check Appropriate Box to Indicate Nature of Notice, Report or Other Data

NOTICE OF INTENTION TO:		SUBSEQUENT REPORT OF:	
PERFORM REMEDIAL WORK <input type="checkbox"/>	PLUG AND ABANDON <input type="checkbox"/>	REMEDIAL WORK <input type="checkbox"/>	ALTERING CASING <input type="checkbox"/>
TEMPORARILY ABANDON <input type="checkbox"/>	CHANGE PLANS <input type="checkbox"/>	COMMENCE DRILLING OPNS. <input type="checkbox"/>	P AND A <input type="checkbox"/>
PULL OR ALTER CASING <input type="checkbox"/>	MULTIPLE COMPL <input type="checkbox"/>	CASING/CEMENT JOB <input type="checkbox"/>	
OTHER: <input type="checkbox"/>		OTHER: <input type="checkbox"/>	

13. Describe proposed or completed operations. (Clearly state all pertinent details, and give pertinent dates, including estimated date of starting any proposed work). SEE RULE 1103. For Multiple Completions: Attach wellbore diagram of proposed completion or recompletion.

I hereby certify that the information above is true and complete to the best of my knowledge and belief. I further certify that any pit or below-grade tank will be constructed and closed according to NMOCD guidelines ☒ X, a general permit ☐ or an (attached) alternative OCD-approved plan ☐.

SIGNATURE Don Hamilton TITLE Agent DATE January 20, 2005

Type or print name Don Hamilton E-mail address: starpoinet@etv.net Telephone No. (970) 739-0513
For State Use Only

APPROVED BY: [Signature] TITLE PROPERTY OIL & GAS INSPECTOR, DIST. #3 DATE NOV 28 2005



envirotech
Analytical Laboratory

**EPA METHOD 8015 Modified
Nonhalogenated Volatile Organics
Total Petroleum Hydrocarbons**

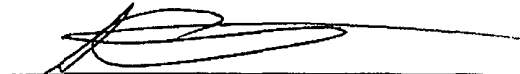
Client:	WPX	Project #:	04108-0136
Sample ID:	Reserve Pit	Date Reported:	10-18-10
Laboratory Number:	56175	Date Sampled:	10-11-10
Chain of Custody No:	10523	Date Received:	10-13-10
Sample Matrix:	Soil	Date Extracted:	10-13-10
Preservative:		Date Analyzed:	10-15-10
Condition:	Intact	Analysis Requested:	8015 TPH

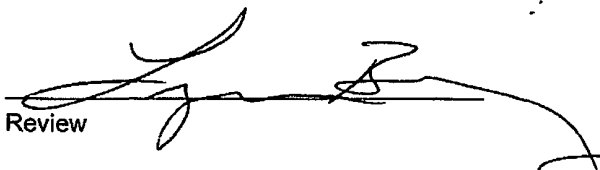
Parameter	Concentration (mg/Kg)	Det. Limit (mg/Kg)
Gasoline Range (C5 - C10)	ND	0.2
Diesel Range (C10 - C28)	ND	0.1
Total Petroleum Hydrocarbons	ND	

ND - Parameter not detected at the stated detection limit.

References: Method 8015B, Nonhalogenated Volatile Organics, Test Methods for Evaluating Solid Waste, SW-846, USEPA, December 1996.

Comments: **Cox Canyon #3C**


Analyst


Review

EPA Method 8015 Modified
Nonhalogenated Volatile Organics
Total Petroleum Hydrocarbons

Quality Assurance Report

Client:	QA/QC	Project #:	N/A
Sample ID:	10-15-10 QA/QC	Date Reported:	10-18-10
Laboratory Number:	56175	Date Sampled:	N/A
Sample Matrix:	Methylene Chloride	Date Received:	N/A
Preservative:	N/A	Date Analyzed:	10-15-10
Condition:	N/A	Analysis Requested:	TPH

	Lab Date	Lab RF	C-Cal RF	% Difference	Accept Range
Gasoline Range C5 - C10	10-15-10	9.9960E+002	1.0000E+003	0.04%	0 - 15%
Diesel Range C10 - C28	10-15-10	9.9960E+002	1.0000E+003	0.04%	0 - 15%

Blank Conc. (mg/L - mg/Kg)	Concentration	Detection Limit
Gasoline Range C5 - C10	ND	0.2
Diesel Range C10 - C28	ND	0.1

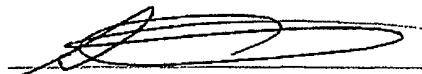
Duplicate Conc. (mg/Kg)	Sample	Duplicate	% Difference	Accept Range
Gasoline Range C5 - C10	ND	ND	0.0%	0 - 30%
Diesel Range C10 - C28	ND	ND	0.0%	0 - 30%

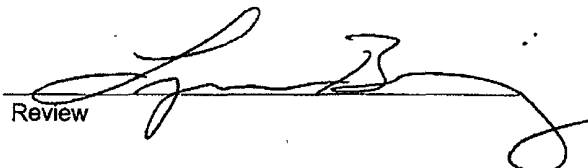
Spike Conc. (mg/Kg)	Sample	Spike Added	Spike Result	% Recovery	Accept Range
Gasoline Range C5 - C10	ND	250	301	121%	75 - 125%
Diesel Range C10 - C28	ND	250	299	120%	75 - 125%

ND - Parameter not detected at the stated detection limit.

References: Method 8015B, Nonhalogenated Volatile Organics, Test Methods for Evaluating Solid Waste, SW-846, USEPA, December 1996.

Comments: QA/QC for Samples 56161-56162, 56169-56170, 56175


 Analyst


 Review

Client:	WPX	Project #:	04108-0136
Sample ID:	Reserve Pit	Date Reported:	10-18-10
Laboratory Number:	56175	Date Sampled:	10-11-10
Chain of Custody:	10523	Date Received:	10-13-10
Sample Matrix:	Soil	Date Analyzed:	10-15-10
Preservative:		Date Extracted:	10-13-10
Condition:	Intact	Analysis Requested:	BTEX
		Dilution:	10

Parameter	Concentration (ug/Kg)	Det. Limit (ug/Kg)
Benzene	ND	0.9
Toluene	2.0	1.0
Ethylbenzene	ND	1.0
p,m-Xylene	1.2	1.2
o-Xylene	3.8	0.9
Total BTEX	7.0	


ND - Parameter not detected at the stated detection limit.

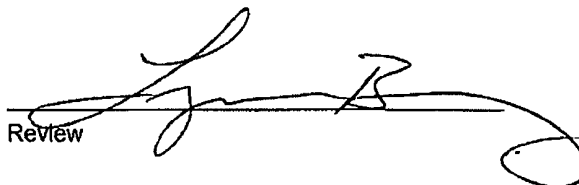
Surrogate Recoveries:	Parameter	Percent Recovery
	Fluorobenzene	97.3 %
	1,4-difluorobenzene	100 %
	Bromochlorobenzene	101 %

References: Method 5030B, Purge-and-Trap, Test Methods for Evaluating Solid Waste, SW-846, USEPA, December 1996.

Method 8021B, Aromatic Volatile Organics, Test Methods for Evaluating Solid Waste, SW-846, USEPA, December 1996.

Comments: Cox Canyon #3C


 Analyst


 Review

Client:	N/A	Project #:	N/A
Sample ID:	1015BBLK QA/QC	Date Reported:	10-18-10
Laboratory Number:	56161	Date Sampled:	N/A
Sample Matrix:	Soil	Date Received:	N/A
Preservative:	N/A	Date Analyzed:	10-15-10
Condition:	N/A	Analysis:	BTEX
		Dilution:	10

Calibration and Detection Limits (ug/L)	I-Cal RF	C-Cal RF	%Diff	Blank Conc	Detect Limit
		Accept Range 0 - 15%			
Benzene	4.2758E+005	4.2844E+005	0.2%	ND	0.1
Toluene	5.4569E+005	5.4678E+005	0.2%	ND	0.1
Ethylbenzene	4.9768E+005	4.9868E+005	0.2%	ND	0.1
p,m-Xylene	1.1859E+006	1.1883E+006	0.2%	ND	0.1
o-Xylene	4.5154E+005	4.5244E+005	0.2%	ND	0.1

Duplicate Conc. (ug/Kg)	Sample	Duplicate	%Diff	Accept Range	Detect Limit
Benzene	ND	ND	0.0%	0 - 30%	0.9
Toluene	4.0	3.6	10.0%	0 - 30%	1.0
Ethylbenzene	ND	ND	0.0%	0 - 30%	1.0
p,m-Xylene	4.1	3.5	14.6%	0 - 30%	1.2
o-Xylene	1.8	1.8	0.0%	0 - 30%	0.9

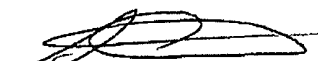
Spike Conc. (ug/Kg)	Sample	Amount Spiked	Spiked Sample	%Recovery	Accept Range
Benzene	ND	500	532	106%	39 - 150
Toluene	4.0	500	535	106%	46 - 148
Ethylbenzene	ND	500	538	108%	32 - 160
p,m-Xylene	4.1	1000	1,080	108%	46 - 148
o-Xylene	1.8	500	542	108%	46 - 148

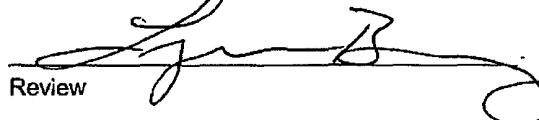
ND - Parameter not detected at the stated detection limit.

Dilution: Spike and spiked sample concentration represent a dilution proportional to sample dilution.

References: Method 5030B, Purge-and-Trap, Test Methods for Evaluating Solid Waste, SW-846, USEPA, December 1996.
 Method 8021B, Aromatic and Halogenated Volatiles by Gas Chromatography Using Photoionization and/or Electrolytic Conductivity Detectors, SW-846, USEPA December 1996

Comments: QA/QC for Samples 56161-56162, 56165, 56169-56170, 56175


 Analyst


 Review



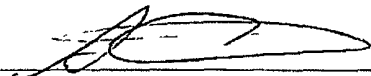
Client:	WPX	Project #:	04108-0136
Sample ID:	Reserve Pit	Date Reported:	10-13-10
Laboratory Number:	56175	Date Sampled:	10-11-10
Chain of Custody No:	10523	Date Received:	10-13-10
Sample Matrix:	Soil	Date Extracted:	10-13-10
Preservative:		Date Analyzed:	10-13-10
Condition:	Intact	Analysis Needed:	TPH-418.1

Parameter	Concentration (mg/kg)	Det. Limit (mg/kg)
Total Petroleum Hydrocarbons	31.5	14.5


ND = Parameter not detected at the stated detection limit.

References: Method 418.1, Petroleum Hydrocarbons, Total Recoverable, Chemical Analysis of Water and Waste, USEPA Storet No. 4551, 1978.

Comments: **Cox Canyon #3C**



Analyst



Review



envirotech
Analytical Laboratory

**EPA METHOD 418.1
TOTAL PETROLEUM
HYDROCARBONS
QUALITY ASSURANCE REPORT**

Client:	QA/QC	Project #:	N/A
Sample ID:	QA/QC	Date Reported:	10-13-10
Laboratory Number:	10-13-TPH.QA/QC 56166	Date Sampled:	N/A
Sample Matrix:	Freon-113	Date Analyzed:	10-13-10
Preservative:	N/A	Date Extracted:	10-13-10
Condition:	N/A	Analysis Needed:	TPH

Calibration	I-Cal Date	C-Cal Date	I-Cal RF:	C-Cal RF:	% Difference	Accept. Range
	10-05-10	10-13-10	1,640	1,670	1.8%	+/- 10%

Blank Conc. (mg/Kg)	Concentration	Detection Limit
TPH	ND	14.5

Duplicate Conc. (mg/Kg)	Sample	Duplicate	% Difference	Accept. Range
TPH	22.3	23.7	6.3%	+/- 30%

Spike Conc. (mg/Kg)	Sample	Spike Added	Spike Result	% Recovery	Accept. Range
TPH	22.3	2,000	1,710	84.6%	80 - 120%

ND = Parameter not detected at the stated detection limit.

References: Method 418.1, Petroleum Hydrocarbons, Total Recoverable, Chemical Analysis of Water and Waste, USEPA Storet No. 4551, 1978.

Comments: QA/QC for Samples 56166-56170, 56175



Analyst



Review



Client:	WPX	Project #:	04108-0136
Sample ID:	Reserve Pit	Date Reported:	10-14-10
Lab ID#:	56175	Date Sampled:	10-11-10
Sample Matrix:	Soil	Date Received:	10-13-10
Preservative:		Date Analyzed:	10-14-10
Condition:	Intact	Chain of Custody:	10523

Parameter

Concentration (mg/Kg)

Total Chloride

25

Reference: U.S.E.P.A., 4500B, "Methods for Chemical Analysis of Water and Wastes", 1983.
Standard Methods For The Examination of Water And Waste Water", 18th ed., 1992.

Comments: **Cox Canyon #3C**

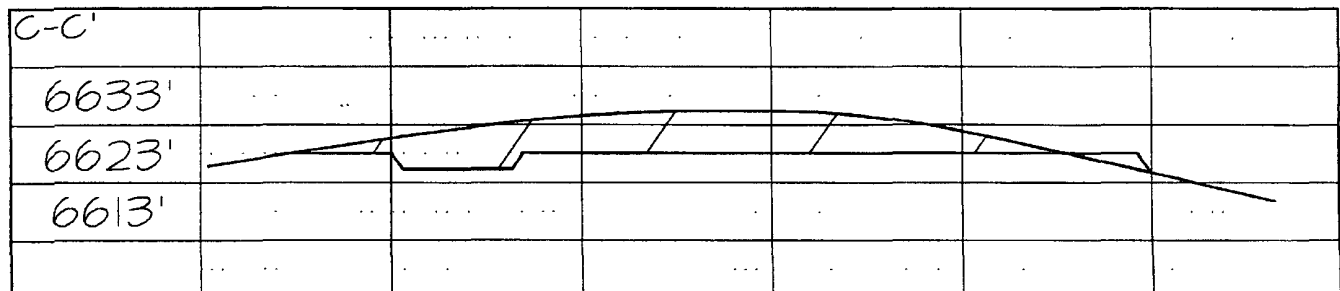
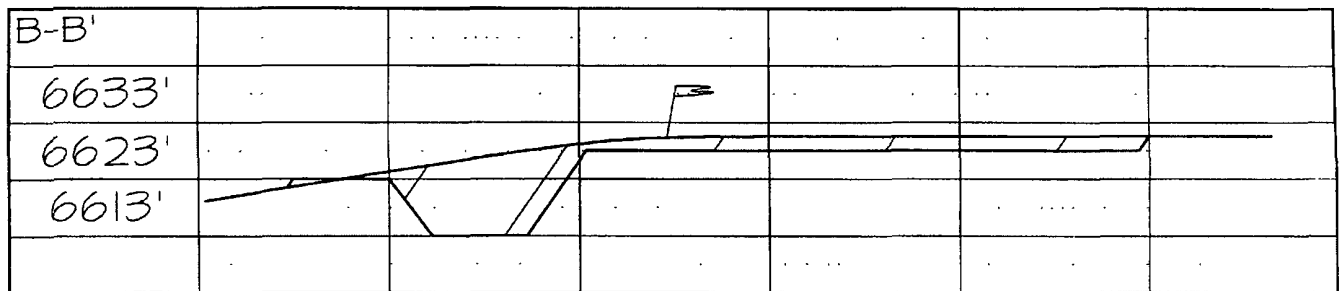
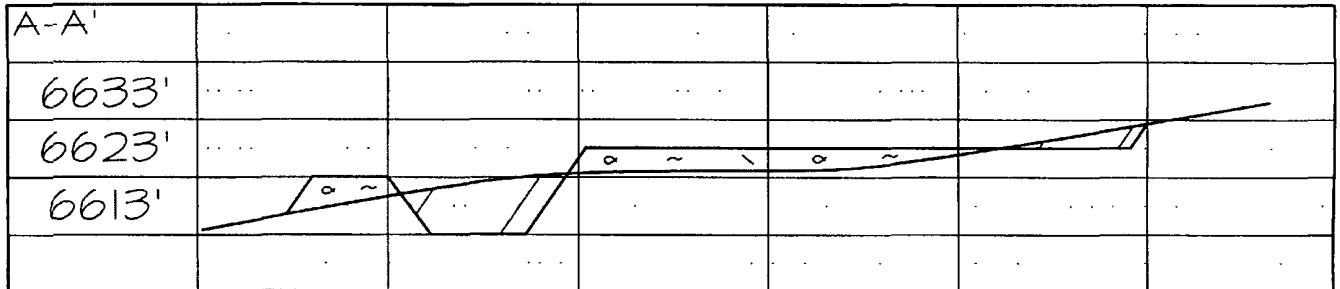
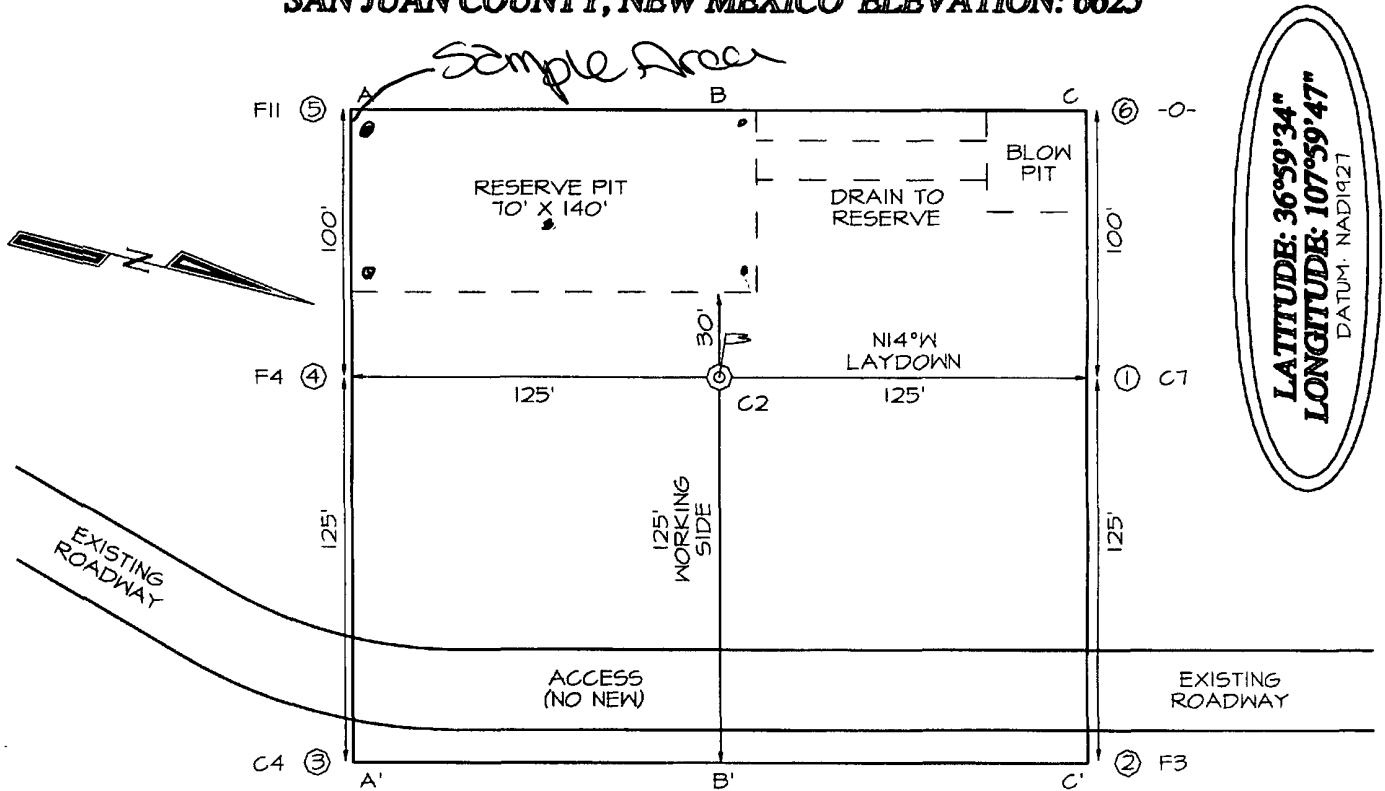
Analyst

Review

10523

ACCENT Printing • Form 28-0807

WILLIAMS PRODUCTION COMPANY COX CANYON UNIT #3C
180' FSL & 1745' FWL, SECTION 9, T32N, R11W, NMPM
SAN JUAN COUNTY, NEW MEXICO ELEVATION: 6625'



Exploration & Production
San Juan Basin Operations
720 So. Main / PO Box 640
Aztec, NM 87410
505-634-4200 / 505-634-4205 fax



Temporary Pit Inspection

FACILITY INFORMATION

Facility Name: CC #3C	API #:
------------------------------	---------------

Pit Type: X <input type="checkbox"/> Drilling <input type="checkbox"/> Workover <input type="checkbox"/> Cavitation	Inspection: <input type="checkbox"/> Daily (Rig) X <input type="checkbox"/> Weekly (Tech)
---	--

Pit Liner intact (no visible tears)	X <input type="checkbox"/> Yes <input type="checkbox"/> No If No, Report to EH&S immediately	Date / Time Reported to EH&S:
Pit Properly Fenced (no fence on rig side if on site)	X <input type="checkbox"/> Yes <input type="checkbox"/> No <input type="checkbox"/> Not Required (if site fully fenced)	
Pit Slopes intact	X <input type="checkbox"/> Yes <input type="checkbox"/> No	
Adequate freeboard (liquid level 2 <u>vertical</u> feet from berm top)	X <input type="checkbox"/> Yes <input type="checkbox"/> No <input type="checkbox"/> Not Applicable	
Does pit have oil or sheen on it?	<input type="checkbox"/> Yes <input checked="" type="checkbox"/> No	
Flare Pit free of liquids	X <input type="checkbox"/> Yes <input type="checkbox"/> No <input type="checkbox"/> Not Applicable	
Comments:		
Inspector Signature:		
Printed Name: Samantha Ivie		
Title: Field Tech II		
Date: 8/9/10 Phone: 505-486-3003		

Record Retention: Submit with Closure
File: EH&S Well Files

Exploration & Production
San Juan Basin Operations
720 So. Main / PO Box 640
Aztec, NM 87410
505-634-4200 / 505-634-4205 fax



Temporary Pit Inspection

FACILITY INFORMATION

Facility Name: CC #3C	API #:
------------------------------	---------------

Pit Type: X <input type="checkbox"/> Drilling <input type="checkbox"/> Workover <input type="checkbox"/> Cavitation	Inspection: <input type="checkbox"/> Daily (Rig) X <input type="checkbox"/> Weekly (Tech)
---	--

Pit Liner intact (no visible tears)	X <input type="checkbox"/> Yes <input type="checkbox"/> No If No, Report to EH&S immediately	Date / Time Reported to EH&S:
Pit Properly Fenced (no fence on rig side if on site)	X <input type="checkbox"/> Yes <input type="checkbox"/> No <input type="checkbox"/> Not Required (if site fully fenced)	
Pit Slopes intact	X <input type="checkbox"/> Yes <input type="checkbox"/> No	
Adequate freeboard (liquid level 2 <u>vertical</u> feet from berm top)	X <input type="checkbox"/> Yes <input type="checkbox"/> No <input type="checkbox"/> Not Applicable	
Does pit have oil or sheen on it?	<input type="checkbox"/> Yes <input checked="" type="checkbox"/> No	
Flare Pit free of liquids	X <input type="checkbox"/> Yes <input type="checkbox"/> No <input type="checkbox"/> Not Applicable	
Comments:		
Inspector Signature:		
Printed Name: Samantha Ivie		
Title: Field Tech I		
Date: 4/9/10 Phone: 505-486-3003		

Record Retention: Submit with Closure
File: EH&S Well Files

Exploration & Production
San Juan Basin Operations
720 So. Main / PO Box 640
Aztec, NM 87410
505-634-4200 / 505-634-4205 fax



Temporary Pit Inspection

FACILITY INFORMATION

Facility Name: CC #3C	API #:
------------------------------	---------------

Pit Type: <input checked="" type="checkbox"/> Drilling <input type="checkbox"/> Workover <input type="checkbox"/> Cavitation	Inspection: <input type="checkbox"/> Daily (Rig) <input checked="" type="checkbox"/> Weekly (Tech)
---	---

Pit Liner intact (no visible tears)	<input checked="" type="checkbox"/> Yes <input type="checkbox"/> No If No, Report to EH&S immediately	Date / Time Reported to EH&S:
Pit Properly Fenced (no fence on rig side if on site)	<input checked="" type="checkbox"/> Yes <input type="checkbox"/> No <input type="checkbox"/> Not Required (if site fully fenced)	
Pit Slopes intact	<input checked="" type="checkbox"/> Yes <input type="checkbox"/> No	
Adequate freeboard (liquid level 2 <u>vertical</u> feet from berm top)	<input checked="" type="checkbox"/> Yes <input type="checkbox"/> No <input type="checkbox"/> Not Applicable	
Does pit have oil or sheen on it?	<input type="checkbox"/> Yes <input checked="" type="checkbox"/> No	
Flare Pit free of liquids	<input checked="" type="checkbox"/> Yes <input type="checkbox"/> No <input type="checkbox"/> Not Applicable	
Comments:		
Inspector Signature:		
Printed Name: Samantha Ivie		
Title: Field Tech I		
Date: 3/31/10 Phone: 505-486-3003		

Record Retention: Submit with Closure
File: EH&S Well Files

Exploration & Production
San Juan Basin Operations
720 So. Main / PO Box 640
Aztec, NM 87410
505-634-4200 / 505-634-4205 fax



Temporary Pit Inspection

FACILITY INFORMATION

Facility Name: CC #3C	API #:
------------------------------	---------------

Pit Type: X <input type="checkbox"/> Drilling <input type="checkbox"/> Workover <input type="checkbox"/> Cavitation	Inspection: <input type="checkbox"/> Daily (Rig) X <input type="checkbox"/> Weekly (Tech)
---	--

Pit Liner intact (no visible tears)	X <input type="checkbox"/> Yes <input type="checkbox"/> No If No, Report to EH&S immediately	Date / Time Reported to EH&S:
Pit Properly Fenced (no fence on rig side if on site)	X <input type="checkbox"/> Yes <input type="checkbox"/> No <input type="checkbox"/> Not Required (if site fully fenced)	
Pit Slopes intact	X <input type="checkbox"/> Yes <input type="checkbox"/> No	
Adequate freeboard (liquid level 2 <u>vertical</u> feet from berm top)	X <input type="checkbox"/> Yes <input type="checkbox"/> No <input type="checkbox"/> Not Applicable	
Does pit have oil or sheen on it?	<input type="checkbox"/> Yes <input checked="" type="checkbox"/> No	
Flare Pit free of liquids	X <input type="checkbox"/> Yes <input type="checkbox"/> No <input type="checkbox"/> Not Applicable	
Comments:		
Inspector Signature:		
Printed Name: Samantha Ivie		
Title: Field Tech II		
Date: 5/10/10 Phone: 505-486-3003		

Record Retention: Submit with Closure
File: EH&S Well Files

Exploration & Production
San Juan Basin Operations
720 So. Main / PO Box 640
Aztec, NM 87410
505-634-4200 / 505-634-4205 fax



Temporary Pit Inspection

FACILITY INFORMATION

Facility Name: CC #3C	API #:
-----------------------	--------

Pit Type: <input checked="" type="checkbox"/> Drilling <input type="checkbox"/> Workover <input type="checkbox"/> Cavitation	Inspection: <input type="checkbox"/> Daily (Rig) <input checked="" type="checkbox"/> Weekly (Tech)
---	--

Pit Liner intact (no visible tears)	<input checked="" type="checkbox"/> Yes <input type="checkbox"/> No If No, Report to EH&S immediately	Date / Time Reported to EH&S:
Pit Properly Fenced (no fence on rig side if on site)	<input checked="" type="checkbox"/> Yes <input type="checkbox"/> No <input type="checkbox"/> Not Required (if site fully fenced)	
Pit Slopes intact	<input checked="" type="checkbox"/> Yes <input type="checkbox"/> No	
Adequate freeboard (liquid level 2 vertical feet from berm top)	<input checked="" type="checkbox"/> Yes <input type="checkbox"/> No <input type="checkbox"/> Not Applicable	
Does pit have oil or sheen on it?	<input type="checkbox"/> Yes <input checked="" type="checkbox"/> No	
Flare Pit free of liquids	<input checked="" type="checkbox"/> Yes <input type="checkbox"/> No <input type="checkbox"/> Not Applicable	
Comments:		
Inspector Signature:		
Printed Name: Samantha Ivie		
Title: Field Tech II		
Date: 5/17/10 Phone: 505-486-3003		

Record Retention: Submit with Closure
File: EH&S Well Files

Exploration & Production
San Juan Basin Operations
720 So. Main / PO Box 640
Aztec, NM 87410
505-634-4200 / 505-634-4205 fax



Temporary Pit Inspection

FACILITY INFORMATION

Facility Name: CC #3C	API #:
------------------------------	---------------

Pit Type: <input checked="" type="checkbox"/> Drilling <input type="checkbox"/> Workover <input type="checkbox"/> Cavitation	Inspection: <input type="checkbox"/> Daily (Rig) <input checked="" type="checkbox"/> Weekly (Tech)
---	---

Pit Liner intact (no visible tears)	X <input type="checkbox"/> Yes <input type="checkbox"/> No If No, Report to EH&S immediately	Date / Time Reported to EH&S:
Pit Properly Fenced (no fence on rig side if on site)	X <input type="checkbox"/> Yes <input type="checkbox"/> No <input type="checkbox"/> Not Required (if site fully fenced)	
Pit Slopes intact	X <input type="checkbox"/> Yes <input type="checkbox"/> No	
Adequate freeboard (liquid level 2 vertical feet from berm top)	X <input type="checkbox"/> Yes <input type="checkbox"/> No <input type="checkbox"/> Not Applicable	
Does pit have oil or sheen on it?	<input type="checkbox"/> Yes <input checked="" type="checkbox"/> No	
Flare Pit free of liquids	X <input type="checkbox"/> Yes <input type="checkbox"/> No <input type="checkbox"/> Not Applicable	
Comments:		
Inspector Signature:		
Printed Name: Samantha Ivie		
Title: Field Tech II		
Date: 5/24/10 Phone: 505-486-3003		

Record Retention: Submit with Closure
File: EH&S Well Files

Exploration & Production
San Juan Basin Operations
720 So. Main / PO Box 640
Aztec, NM 87410
505-634-4200 / 505-634-4205 fax



Temporary Pit Inspection

FACILITY INFORMATION

Facility Name: CC #3C	API #:
-----------------------	--------

Pit Type: X <input type="checkbox"/> Drilling <input type="checkbox"/> Workover <input type="checkbox"/> Cavitation	Inspection: <input type="checkbox"/> Daily (Rig) X <input type="checkbox"/> Weekly (Tech)
--	---

Pit Liner intact (no visible tears)	X <input type="checkbox"/> Yes <input type="checkbox"/> No If No, Report to EH&S immediately	Date / Time Reported to EH&S:
Pit Properly Fenced (no fence on rig side if on site)	X <input type="checkbox"/> Yes <input type="checkbox"/> No <input type="checkbox"/> Not Required (if site fully fenced)	
Pit Slopes intact	X <input type="checkbox"/> Yes <input type="checkbox"/> No	
Adequate freeboard (liquid level 2 vertical feet from berm top)	X <input type="checkbox"/> Yes <input type="checkbox"/> No <input type="checkbox"/> Not Applicable	
Does pit have oil or sheen on it?	<input type="checkbox"/> Yes <input checked="" type="checkbox"/> No	
Flare Pit free of liquids	X <input type="checkbox"/> Yes <input type="checkbox"/> No <input type="checkbox"/> Not Applicable	
Comments:		
Inspector Signature:		
Printed Name: Samantha Ivie		
Title: Field Tech II		
Date: 6/7/10 Phone: 505-486-3003		

Record Retention: Submit with Closure
File: EH&S Well Files

Exploration & Production
San Juan Basin Operations
720 So. Main / PO Box 640
Aztec, NM 87410
505-634-4200 / 505-634-4205 fax



Temporary Pit Inspection

FACILITY INFORMATION

Facility Name: CC #3C	API #:
------------------------------	---------------

Pit Type: X <input type="checkbox"/> Drilling <input type="checkbox"/> Workover <input type="checkbox"/> Cavitation	Inspection: <input type="checkbox"/> Daily (Rig) X <input type="checkbox"/> Weekly (Tech)
---	--

Pit Liner intact (no visible tears)	X <input type="checkbox"/> Yes <input type="checkbox"/> No If No, Report to EH&S immediately	Date / Time Reported to EH&S:
Pit Properly Fenced (no fence on rig side if on site)	X <input type="checkbox"/> Yes <input type="checkbox"/> No <input type="checkbox"/> Not Required (if site fully fenced)	
Pit Slopes intact	X <input type="checkbox"/> Yes <input type="checkbox"/> No	
Adequate freeboard (liquid level 2 <u>vertical</u> feet from berm top)	X <input type="checkbox"/> Yes <input type="checkbox"/> No <input type="checkbox"/> Not Applicable	
Does pit have oil or sheen on it?	<input type="checkbox"/> Yes <input checked="" type="checkbox"/> No	
Flare Pit free of liquids	X <input type="checkbox"/> Yes <input type="checkbox"/> No <input type="checkbox"/> Not Applicable	
Comments:		
Inspector Signature:		
Printed Name: Samantha Ivie		
Title: Field Tech II		
Date: 6/14/10 Phone: 505-486-3003		

Record Retention: Submit with Closure
File: EH&S Well Files

Exploration & Production
San Juan Basin Operations
720 So. Main / PO Box 640
Aztec, NM 87410
505-634-4200 / 505-634-4205 fax



Temporary Pit Inspection

FACILITY INFORMATION

Facility Name: CC #3C	API #:
------------------------------	---------------

Pit Type: <input checked="" type="checkbox"/> Drilling <input type="checkbox"/> Workover <input type="checkbox"/> Cavitation	Inspection: <input type="checkbox"/> Daily (Rig) <input checked="" type="checkbox"/> Weekly (Tech)
---	---

Pit Liner intact (no visible tears)	<input checked="" type="checkbox"/> Yes <input type="checkbox"/> No If No, Report to EH&S immediately	Date / Time Reported to EH&S:
Pit Properly Fenced (no fence on rig side if on site)	<input checked="" type="checkbox"/> Yes <input type="checkbox"/> No <input type="checkbox"/> Not Required (if site fully fenced)	
Pit Slopes intact	<input checked="" type="checkbox"/> Yes <input type="checkbox"/> No	
Adequate freeboard (liquid level 2 <u>vertical</u> feet from berm top)	<input checked="" type="checkbox"/> Yes <input type="checkbox"/> No <input type="checkbox"/> Not Applicable	
Does pit have oil or sheen on it?	<input type="checkbox"/> Yes <input checked="" type="checkbox"/> No	
Flare Pit free of liquids	<input checked="" type="checkbox"/> Yes <input type="checkbox"/> No <input type="checkbox"/> Not Applicable	
Comments:		
Inspector Signature:		
Printed Name: Samantha Ivie		
Title: Field Tech II		
Date: 6/25/10 Phone: 505-486-3003		

Record Retention: Submit with Closure
File: EH&S Well Files

Exploration & Production
San Juan Basin Operations
720 So. Main / PO Box 640
Aztec, NM 87410
505-634-4200 / 505-634-4205 fax



Temporary Pit Inspection

FACILITY INFORMATION

Facility Name: CC #3C	API #:
------------------------------	---------------

Pit Type: X <input type="checkbox"/> Drilling <input type="checkbox"/> Workover <input type="checkbox"/> Cavitation	Inspection: <input type="checkbox"/> Daily (Rig) X <input type="checkbox"/> Weekly (Tech)
---	--

Pit Liner intact (no visible tears)	X <input type="checkbox"/> Yes <input type="checkbox"/> No If No, Report to EH&S immediately	Date / Time Reported to EH&S:
Pit Properly Fenced (no fence on rig side if on site)	X <input type="checkbox"/> Yes <input type="checkbox"/> No <input type="checkbox"/> Not Required (if site fully fenced)	
Pit Slopes intact	X <input type="checkbox"/> Yes <input type="checkbox"/> No	
Adequate freeboard (liquid level 2 <u>vertical</u> feet from berm top)	X <input type="checkbox"/> Yes <input type="checkbox"/> No <input type="checkbox"/> Not Applicable	
Does pit have oil or sheen on it?	<input type="checkbox"/> Yes <input checked="" type="checkbox"/> No	
Flare Pit free of liquids	X <input type="checkbox"/> Yes <input type="checkbox"/> No <input type="checkbox"/> Not Applicable	
Comments:		
Inspector Signature:		
Printed Name: Samantha Ivie		
Title: Field Tech II		
Date: 7/13/10 Phone: 505-486-3003		

Record Retention: Submit with Closure
File EH&S Well Files

Exploration & Production
San Juan Basin Operations
720 So. Main / PO Box 640
Aztec, NM 87410
505-634-4200 / 505-634-4205 fax



Temporary Pit Inspection

FACILITY INFORMATION

Facility Name: CC #3C	API #:
------------------------------	---------------

Pit Type: X <input type="checkbox"/> Drilling <input type="checkbox"/> Workover <input type="checkbox"/> Cavitation	Inspection: <input type="checkbox"/> Daily (Rig) X <input type="checkbox"/> Weekly (Tech)
---	--

Pit Liner intact (no visible tears)	X <input type="checkbox"/> Yes <input type="checkbox"/> No If No, Report to EH&S immediately	Date / Time Reported to EH&S:
Pit Properly Fenced (no fence on rig side if on site)	X <input type="checkbox"/> Yes <input type="checkbox"/> No <input type="checkbox"/> Not Required (if site fully fenced)	
Pit Slopes intact	X <input type="checkbox"/> Yes <input type="checkbox"/> No	
Adequate freeboard (liquid level 2 <u>vertical</u> feet from berm top)	X <input type="checkbox"/> Yes <input type="checkbox"/> No <input type="checkbox"/> Not Applicable	
Does pit have oil or sheen on it?	<input type="checkbox"/> Yes <input checked="" type="checkbox"/> No	
Flare Pit free of liquids	X <input type="checkbox"/> Yes <input type="checkbox"/> No <input type="checkbox"/> Not Applicable	
Comments:		
Inspector Signature:		
Printed Name: Samantha Ivie		
Title: Field Tech II		
Date: 7/19/10 Phone: 505-486-3003		

Record Retention: Submit with Closure
File: EH&S Well Files

Exploration & Production
San Juan Basin Operations
720 So. Main / PO Box 640
Aztec, NM 87410
505-634-4200 / 505-634-4205 fax



Temporary Pit Inspection

FACILITY INFORMATION

Facility Name: CC #3C	API #:
------------------------------	---------------

Pit Type: X <input type="checkbox"/> Drilling <input type="checkbox"/> Workover <input type="checkbox"/> Cavitation	Inspection: <input type="checkbox"/> Daily (Rig) X <input type="checkbox"/> Weekly (Tech)
---	--

Pit Liner intact (no visible tears)	X <input type="checkbox"/> Yes <input type="checkbox"/> No If No, Report to EH&S immediately	Date / Time Reported to EH&S:
Pit Properly Fenced (no fence on rig side if on site)	X <input type="checkbox"/> Yes <input type="checkbox"/> No <input type="checkbox"/> Not Required (if site fully fenced)	
Pit Slopes intact	X <input type="checkbox"/> Yes <input type="checkbox"/> No	
Adequate freeboard (liquid level 2 <u>vertical</u> feet from berm top)	X <input type="checkbox"/> Yes <input type="checkbox"/> No <input type="checkbox"/> Not Applicable	
Does pit have oil or sheen on it?	<input type="checkbox"/> Yes <input checked="" type="checkbox"/> No	
Flare Pit free of liquids	X <input type="checkbox"/> Yes <input type="checkbox"/> No <input type="checkbox"/> Not Applicable	
Comments:		
Inspector Signature:		
Printed Name: Samantha Ivie		
Title: Field Tech II		
Date: 8/9/10 Phone: 505-486-3003		

Record Retention: Submit with Closure
File: EH&S Well Files

UNITED STATES
DEPARTMENT OF INTERIOR
BUREAU OF LAND MANAGEMENT

FORM APPROVED
Budget Bureau No 1004-0135
Expires March 31, 1993

SUNDRY NOTICE AND REPORTS ON WELLS

Do not use this form for proposals to drill or to deepen or reentry to a different reservoir Use "APPLICATION TO DRILL" for permit for such proposals

SUBMIT IN TRIPLICATE		5	Lease Designation and Serial No NM-03189
		6	If Indian, Allottee or Tribe Name N/A
		7	If Unit or CA, Agreement Designation Cox Canyon
1	Type of Well Oil Well <input type="checkbox"/> Gas Well <input checked="" type="checkbox"/> Other <input type="checkbox"/>	8	Well Name and No Cox Canyon Unit #3C
2	Name of Operator WILLIAMS PRODUCTION COMPANY	9	API Well No 30-045-32864
3	Address and Telephone No PO BOX 640 Aztec, NM 87410-0640 632-4222	10	Field and Pool, or Exploratory Area Blanco MV
4	Location of Well (Footage, Sec , T , R , M , or Survey Description) Surface 180' FSL & 1745' FWL Sec 9, T32N, R11W	11	County or Parish, State San Juan, NM

CHECK APPROPRIATE BOX(s) TO INDICATE NATURE OF NOTICE, REPORT, OR OTHER DATA

TYPE OF SUBMISSION	TYPE OF ACTION
Notice of Intent	Abandonment
X Subsequent Report	Recompletion
Final Abandonment	Plugging Back
	Casing Repair
	Altering Casing
	X Other <u>COMPLETION</u>
	Change of Plans
	New Construction
	Non-Routine Fracturing
	Water Shut-Off
	Conversion to Injection
	Dispose Water
	(Note Report results of multiple completion on Well Completion or Recompletion Report and Log form)

13 Describe Proposed or Completed Operations (Clearly state all pertinent details, and give pertinent dates, including estimated date of starting any proposed work If well is directionally drilled, give subsurface locations and measured and true vertical depths for all markers and zones pertinent to this work)*

3-5-2010 – RU BWWC and run CBL, TOC @ 4116'

3-5-2010 – MIRU AWS #656 to prep for frac

3-9-2010 – Test production csg to 1500 psi for 30 min with no leak off DO cement & FC to PBTD @ 6054'

3-12-2010 – Perf 1st stage Mesaverde, 5598' – 5912', with 71, 0 34" holes

3-15-2010 – Frac 1st stage Mesaverde with 75,300# 20/40 BASF Set CIBP @ 5588' Perf 2nd stage Mesaverde, 5306' – 5578', with 47, 0 34" holes Frac 2nd stage Mesaverde with 83,200# 20/40 BASF Set CIBP @ 5280' Perf 3rd stage Mesaverde, 4852' – 5260', with 51, 0 34" holes Frac 3rd stage Mesaverde with 82,100# 20/40 BASF

3-17-2010 – DO CIBP @ 5280'

14 I hereby certify that the foregoing is true and correct

Signed _____
Larry Higgins

Title Drilling COM Date 04/2/10

(This space for Federal or State office use)

Approved by _____ Title _____ Date _____

Conditions of approval, if any

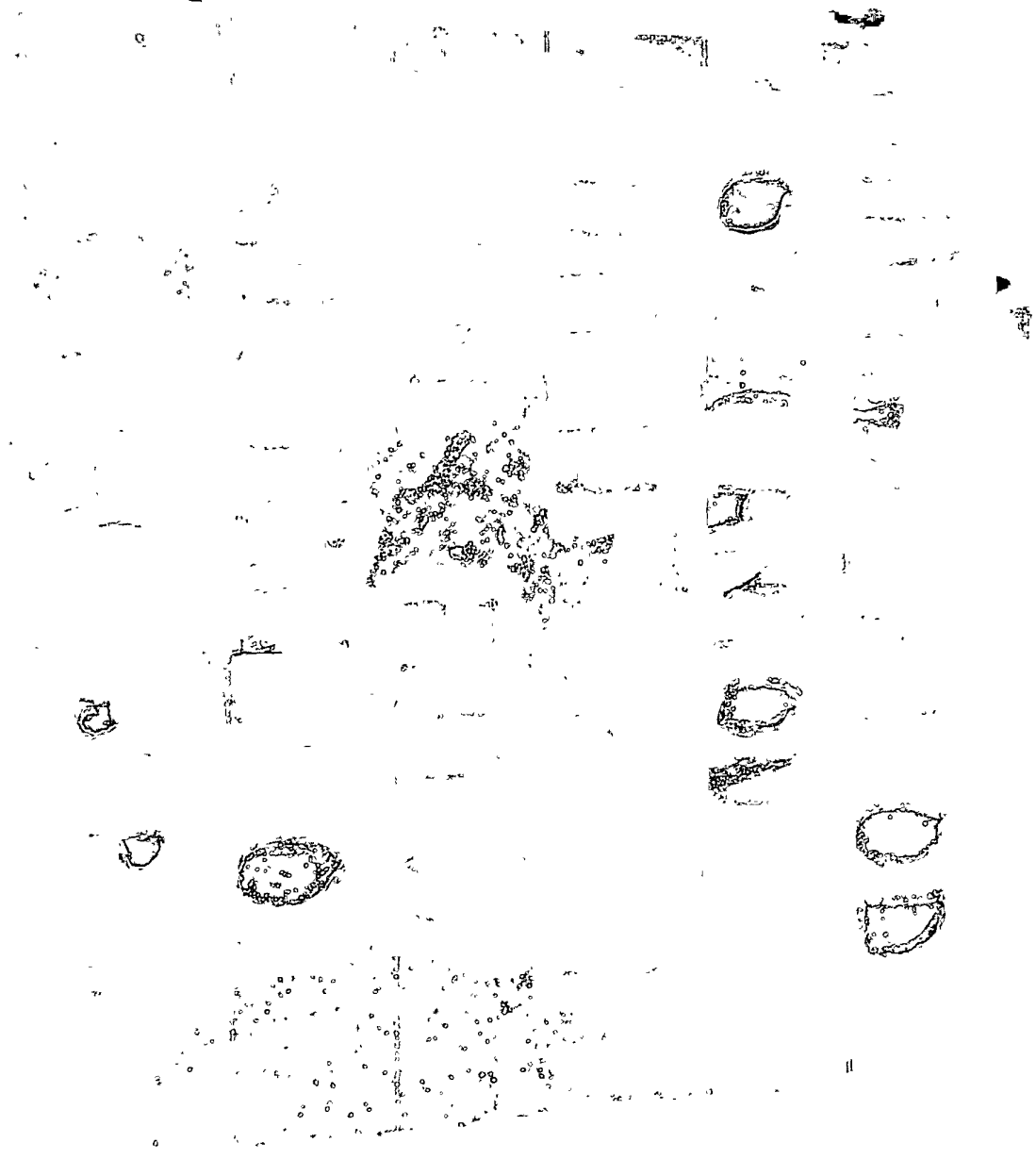
Title 18 U S C Section 1001, makes it a crime for any person knowingly and willfully to make to any department or agency of the United States any false, fictitious or fraudulent statements or representations as to any matter within its jurisdiction

WILLIAMS PERIOD
BOX COMPANY
UNITED STATES
INTERNATIONAL
SANTANA CO
IN BRACE BUBAL

Cox Canyon #003









Exploration & Production
PO Box 640
Aztec, NM 87410
505/634-4219
505/634-4205 fax



Transmittal

To: Brandon Powell
NMOCD
1000 Rio Brazos Road
Aztec, New Mexico 87410

From: Tasha Meador
San Juan- Permitting Technician
505-634-4241
tasha.meador@williams.com

Date:

Re: Supplemental Submittal

Temporary Pit Closure report: NMOCD Permit # 7392

Enclosed and per your direction, please find our supplemental submittal for the referenced temporary pit closure report.

Please advise if additional information is required. Thank you for your time and consideration. Please call or contact me if there are any questions.

Respectfully resubmitted,

Tasha Meador
Williams Exploration & Production
721 S Main Aztec, NM
Office: 505-634-4200
Direct: 505-634-4241
Fax: 505-634-4205
tasha.meador@williams.com

Encl: * This well is listed as the
1 Cox Canyon #3 on your spreadsheet
however, it is actually Cox Canyon #003C

Submit To Appropriate District Office Two Copies District I 1625 N French Dr Hobbs, NM 88240 District II 1301 W Grand Avenue, Artesia NM 88210 District III 1000 Rio Brazos Rd Aztec, NM 87410 District IV 1220 S St Francis Dr Santa Fe, NM 87505	State of New Mexico Energy, Minerals and Natural Resources Oil Conservation Division 1220 South St. Francis Dr. Santa Fe, NM 87505	Form C-105 July 17, 2008								
		1 WELL API NO. 30-045-32864								
		2 Type of Lease <input type="checkbox"/> STATE <input type="checkbox"/> FEE <input checked="" type="checkbox"/> FED/INDIAN								
		3 State Oil & Gas Lease No NM-03189								
WELL COMPLETION OR RECOMPLETION REPORT AND LOG										
4 Reason for filing <input type="checkbox"/> COMPLETION REPORT (Fill in boxes #1 through #31 for State and Fee wells only) <input checked="" type="checkbox"/> C-144 CLOSURE ATTACHMENT (Fill in boxes #1 through #9, #15 Date Rig Released and #32 and/or #33, attach this and the plat to the C-144 closure report in accordance with 19 15 17 13 K NMAC)		5 Lease Name or Unit Agreement Name Cox Canyon								
		6 Well Number Cox Canyon #003C								
7 Type of Completion <input checked="" type="checkbox"/> NEW WELL <input type="checkbox"/> WORKOVER <input type="checkbox"/> DEEPENING <input type="checkbox"/> PLUGBACK <input type="checkbox"/> DIFFERENT RESERVOIR <input type="checkbox"/> OTHER										
8 Name of Operator WILLIAMS PRODUCTION, LLC		9 OGRID 120782								
10 Address of Operator P O BOX 640 AZTEC, NM 87410		11 Pool name or Wildcat								
12 Location	Unit Ltr	Section	Township	Range	Lot	Feet from the	N/S Line	Feet from the	E/W Line	County
Surface:										
BH:										
13 Date Spudded	14 Date T D Reached	15 Date Rig Released 03/29/2010		16 Date Completed (Ready to Produce)			17 Elevations (DF and RKB, RT, GR, etc)			
18 Total Measured Depth of Well		19 Plug Back Measured Depth		20 Was Directional Survey Made?			21 Type Electric and Other Logs Run			
22 Producing Interval(s), of this completion - Top, Bottom, Name										
23 CASING RECORD (Report all strings set in well)										
CASING SIZE		WEIGHT LB /FT		DEPTH SET		HOLE SIZE		CEMENTING RECORD		AMOUNT PULLED
24 LINER RECORD						25 TUBING RECORD				
SIZE	TOP	BOTTOM	SACKS CEMENT	SCREEN	SIZE	DEPTH SET	PACKER SET			
2 1/2	11' 0"									
2 1/2	11' 0"									
2 1/2	11' 0"									
2 1/2	11' 0"									
2 1/2	11' 0"									
26 Perforation record (interval, size, and number)					27 ACID, SHOT, FRACTURE, CEMENT, SQUEEZE, ETC					
					DEPTH INTERVAL		AMOUNT AND KIND MATERIAL USED			
28 PRODUCTION										
Date First Production		Production Method (Flowing, gas lift, pumping - Size and type pump)					Well Status (Prod or Shut-in)			
Date of Test	Hours Tested	Choke Size	Prod'n For Test Period	Oil - Bbl	Gas - MCF	Water - Bbl	Gas - Oil Ratio			
Flow Tubing Press	Casing Pressure	Calculated 24-Hour Rate	Oil - Bbl	Gas - MCF	Water - Bbl	Oil Gravity - API - (Corr)				
29 Disposition of Gas (Sold, used for fuel, vented, etc)							30 Test Witnessed By			
31 List Attachments										
32 If a temporary pit was used at the well, attach a plat with the location of the temporary pit										
33 If an on-site burial was used at the well, report the exact location of the on-site burial										
Latitude 36 992682 Longitude 107 997163 NAD 1927 1983										
I hereby certify that the information shown on both sides of this form is true and complete to the best of my knowledge and belief										
Tasha Meador		Printed Name								
Signature <u>Tasha Meador</u>		Title		Permit Technician		Date		8/29/11		
E-mail Address: tasha.meador@williams.com										

District I
PO Box 1980, Hobbs, NM 88241-1980

District II
PO Drawer DD, Artesia, NM 88211-0719

District III
1000 Rio Brazos Rd., Aztec, NM 87410

District IV
PO Box 2088, Santa Fe, NM 87504-2088

State of New Mexico
Energy, Minerals & Natural Resources Department

OIL CONSERVATION DIVISION
PO Box 2088
Santa Fe, NM 87504-2088

Form C-102
Revised February 21, 1994
Instructions on back
Submit to Appropriate District Office
State Lease - 4 Copies
Fee Lease - 3 Copies

☐ AMENDED REPORT

WELL LOCATION AND ACREAGE DEDICATION PLAT

*API Number		*Pool Code 72319 / 71599	*Pool Name BLANCO MESAVERDE / BASIN DAKOTA
*Property Code	*Property Name COX CANYON UNIT		*Well Number 3C
*GRID No. 120782	*Operator Name WILLIAMS PRODUCTION COMPANY		*Elevation 6625'

¹⁰ Surface Location

UL or lot no.	Section	Township	Range	Lot Idn	Feet from the	North/South line	Feet from the	East/West line	County
N	9	32N	11W		180	SOUTH	1745	WEST	SAN JUAN

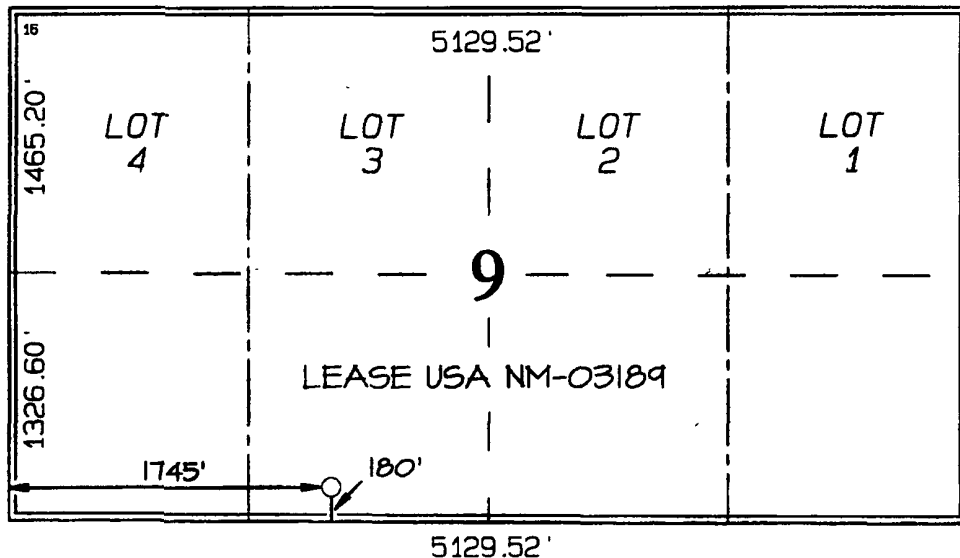
¹¹ Bottom Hole Location If Different From Surface

UL or lot no.	Section	Township	Range	Lot Idn	Feet from the	North/South line	Feet from the	East/West line	County

¹² Dedicated Acres 336.40 Acres - Entire Section	¹³ Joint or Infill	¹⁴ Consolidation Code	¹⁵ Order No.
--	-------------------------------	----------------------------------	-------------------------

NO ALLOWABLE WILL BE ASSIGNED TO THIS COMPLETION UNTIL ALL INTERESTS HAVE BEEN CONSOLIDATED OR A NON-STANDARD UNIT HAS BEEN APPROVED BY THE DIVISION

COLORADO / NEW MEXICO STATE-LINE BOUNDARY



¹⁷ OPERATOR CERTIFICATION

I hereby certify that the information contained herein is true and complete to the best of my knowledge and belief

Tasha Meader
Signature

Tasha Meader
Printed Name

Permit Tech
Title

8129111
Date

¹⁸ SURVEYOR CERTIFICATION

I hereby certify that the well location shown on this plat was plotted from field notes of actual surveys made by me or under my supervision, and that the same is true and correct to the best of my belief.

Date Revised: DECEMBER 10, 2005
Survey Date: NOVEMBER 30, 2004

Signature and Seal of Professional Surveyor



JASON C. EDWARDS
Certificate Number 15269