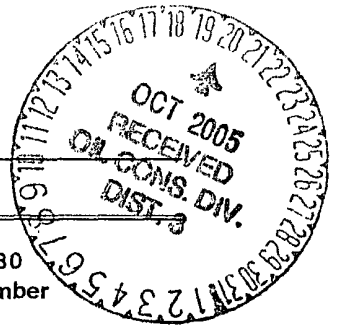


UNITED STATES
DEPARTMENT OF THE INTERIOR
BUREAU OF LAND MANAGEMENT

APPLICATION FOR PERMIT TO DRILL, DEEPEN, OR PLUG BACK



1a. Type of Work
DRILL

2005 AUG 5 AM 9 41

5. Lease Number
NMSF-080430
Unit Reporting Number

1b. Type of Well
GAS

RECEIVED
070 FARMINGTON NM

6. If Indian, All. or Tribe

2. Operator
BURLINGTON
RESOURCES Oil & Gas Company

7. Unit Agreement Name
San Juan 28-6 Unit

3. Address & Phone No. of Operator
PO Box 4289, Farmington, NM 87499
(505) 326-9700

8. Farm or Lease Name
9. Well Number
#160P

4. Location of Well
Unit L (NWSW) 1806' FSL, 660' FWL

Latitude 36° 37.8006'N
Longitude 107° 30.7816'W

10. Field, Pool, Wildcat
Blanco Mesaverde/Basin Dakota
11. Sec., Twn, Rge, Mer. (NMPM)
Sec. 30, T28N, R06W
API # 30-039- 29617

14. Distance in Miles from Nearest Town
32.3 miles to the Blanco Post Office

12. County
Rio Arriba
13. State
NM

15. Distance from Proposed Location to Nearest Property or Lease Line
660'

16. Acres in Lease

17. Acres Assigned to Well
DK Lot 3, NESW 65.78
Sec. 19 Lots 3 & 4 E2SW; Sec. 30 Lots 1 & 2 E2NW 262.99
MV Lots 3 & 4 E2SW 131.58; Lots 1 & 2 E2NW 131.54

OK B-2948 tract 7

18. Distance from Proposed Location to Nearest Well, Drlg, Compl, or Applied for on this Lease
868' - San Juan 28-6 Unit #411

19. Proposed Depth
7774'

20. Rotary or Cable Tools
Rotary

21. Elevations (DF, FT, GR, Etc.)
6579' GL

22. Approx. Date Work will Start

23. Proposed Casing and Cementing Program
See Operations Plan attached

24. Authorized by: Amanda Sandaval
Regulatory Compliance Assistant II

8-5-05
Date

PERMIT NO.

APPROVAL DATE

APPROVED BY

TITLE

DATE

Archaeological Report attached

Threatened and Endangered Species Report attached

NOTE This format is issued in lieu of U.S. BLM Form 3160-3

Title 18 U.S.C. Section 1001, makes it a crime for any person knowingly and willfully to make to any department or agency of the United States any false, fictitious or fraudulent statements or presentations as to any matter within its jurisdiction.

NMOC

DISTRICT I
1625 N. French Dr., Hobbs, N.M. 88240

DISTRICT II
311 South First, Artesia, N.M. 88210

DISTRICT III
1000 Rio Bronco Rd., Aztec, N.M. 87410

DISTRICT IV
2040 South Pacheco, Santa Fe, NM 87505

State of New Mexico
Energy, Minerals & Natural Resources Department

Form C-102
Revised August 15, 2000

Submit to Appropriate District Office
State Lease - 4 Copies
Fee Lease - 3 Copies

OIL CONSERVATION DIVISION

2040 South Pacheco

Santa Fe, NM 87505

2005 AUG 5 AM 9 41 ☐ AMENDED REPORT

WELL LOCATION AND ACREAGE DEDICATION/PLAT

API Number 30-039-	Pool Code 72319/71599	Pool Name Blanco Mesaverde/Basin Dakota
Property Code 7462	Property Name SAN JUAN 28-6 UNIT	Well Number 160P
GRID No. 14538	Operator Name BURLINGTON RESOURCES OIL AND GAS COMPANY LP	Elevation 6579'

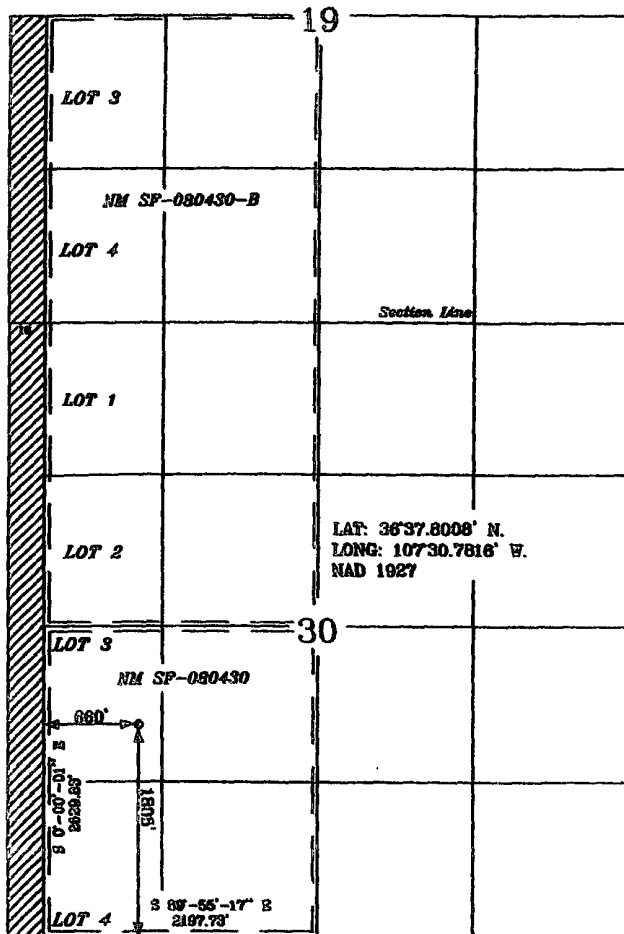
10 Surface Location

UL or lot no.	Section	Township	Range	Lot Idn	Feet from the	North/South line	Feet from the	East/West line	County
L	30	28-N	6-W		1805'	SOUTH	660'	WEST	RIO ARriba

11 Bottom Hole Location If Different From Surface

UL or lot no.	Section	Township	Range	Lot Idn	Feet from the	North/South line	Feet from the	East/West line	County
Dedicated Acres DK-Lt 3, NESW; Sec 19 Lt 3, 4, E2SW Sec 30, Lt 1, 2, E2NW - MV = 143.12 ac.					Joint or Infill 328.77 ac.		Consolidation Code		Order No.

NO ALLOWABLE WILL BE ASSIGNED TO THIS COMPLETION UNTIL ALL INTERESTS HAVE BEEN CONSOLIDATED
OR A NON-STANDARD UNIT HAS BEEN APPROVED BY THE DIVISION



17 OPERATOR CERTIFICATION

I hereby certify that the information contained herein is true and complete to the best of my knowledge and belief

Signature
Joni Clark
Printed Name
Sr. Regulatory Specialist
Title
Date
6-6-05

18 SURVEYOR CERTIFICATION

I hereby certify that the well location shown on this plat was plotted from field notes of actual surveys made by me or under my supervision, and that the same is true and correct to the best of my belief.

Date of Survey
5-28-05

Signature and Seal of Professional Surveyor

15703
Certificate Number
15703

OPERATIONS PLAN

Well Name: San Juan 28-6 Unit #160P

Location: 1805' FSL, 660' FWL, Sec 30, T-28-N, R-6-W
Rio Arriba County, NM

Latitude 36° 37.8006'N, Longitude 107° 30.7816'W

Formation: Blanco Mesaverde/Basin Dakota

Total Depth: 7774'

Logging Program: See San Juan 28-6 Unit Master Operations Plan

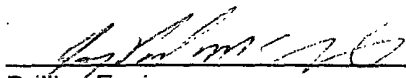
Mud Program: See San Juan 28-6 Unit Master Operations Plan

Casing Program (as listed, the equivalent, or better):

Hole Size	Depth Interval	Csg	Wt.	Grade	Cement	
12 1/4	0' - 120	9.625"	32.3#	H-40	113	cu.ft
8 3/4	0' - 3526	7"	20.0#	J-55	789	cu.ft
6 1/4	0' - 7774	4.5"	10.5/11.6#	J-55	578	cu.ft

Tubing Program: See San Juan 28-6 Unit Master Operations Plan

- * The Mesaverde and Dakota formations will be completed and commingled.
- * The east half of Section 34 is dedicated to the Mesaverde and the Dakota formation in this well.
- * Gas is dedicated.



Drilling Engineer

6/27/05

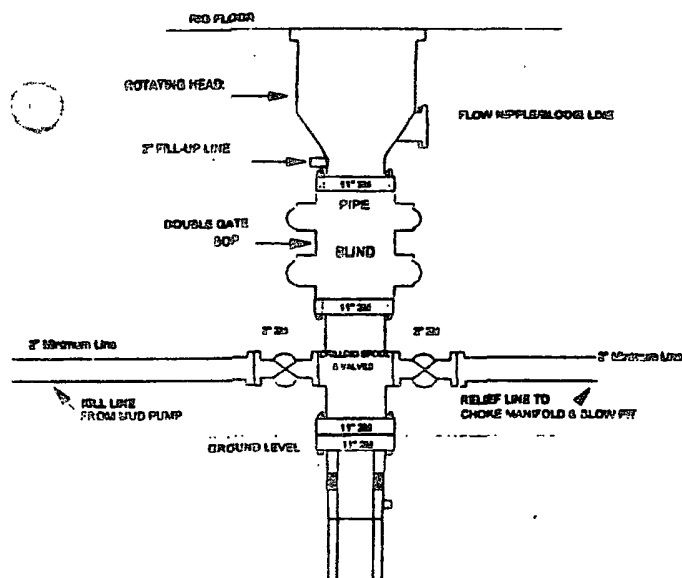
Date

*Assumption

Lewis 100

Burlington Resources

Drilling Rig 2000 psi System



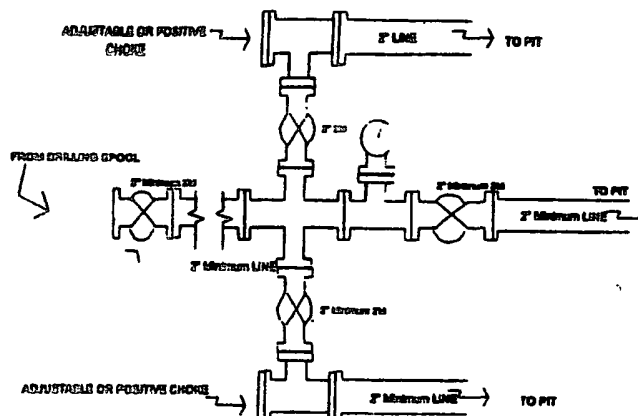
BOP installation from Surface Casing Point to Total Depth. 11\"/>

Figure #1

4-20-01

Burlington Resources

Drilling Rig Choke Manifold Configuration 2000 psi System



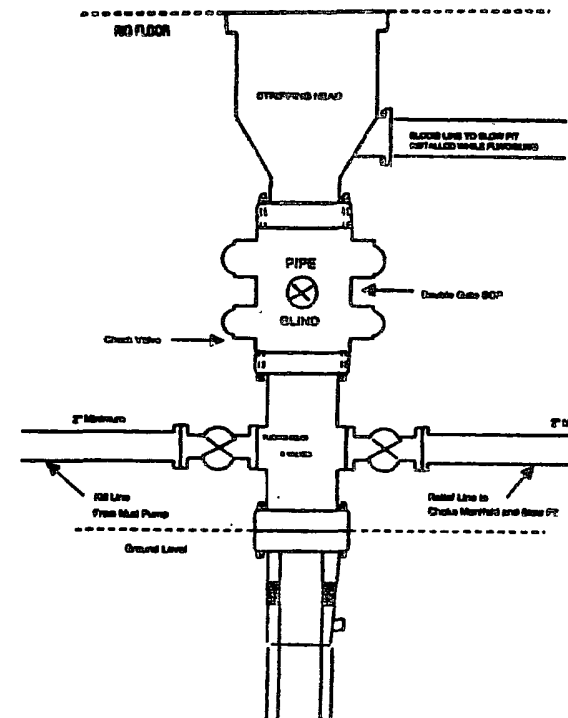
Choke manifold installation from Surface Casing Point to Total Depth. 2,000psi working pressure equipment with two chokes.

Figure #3

4-20-01

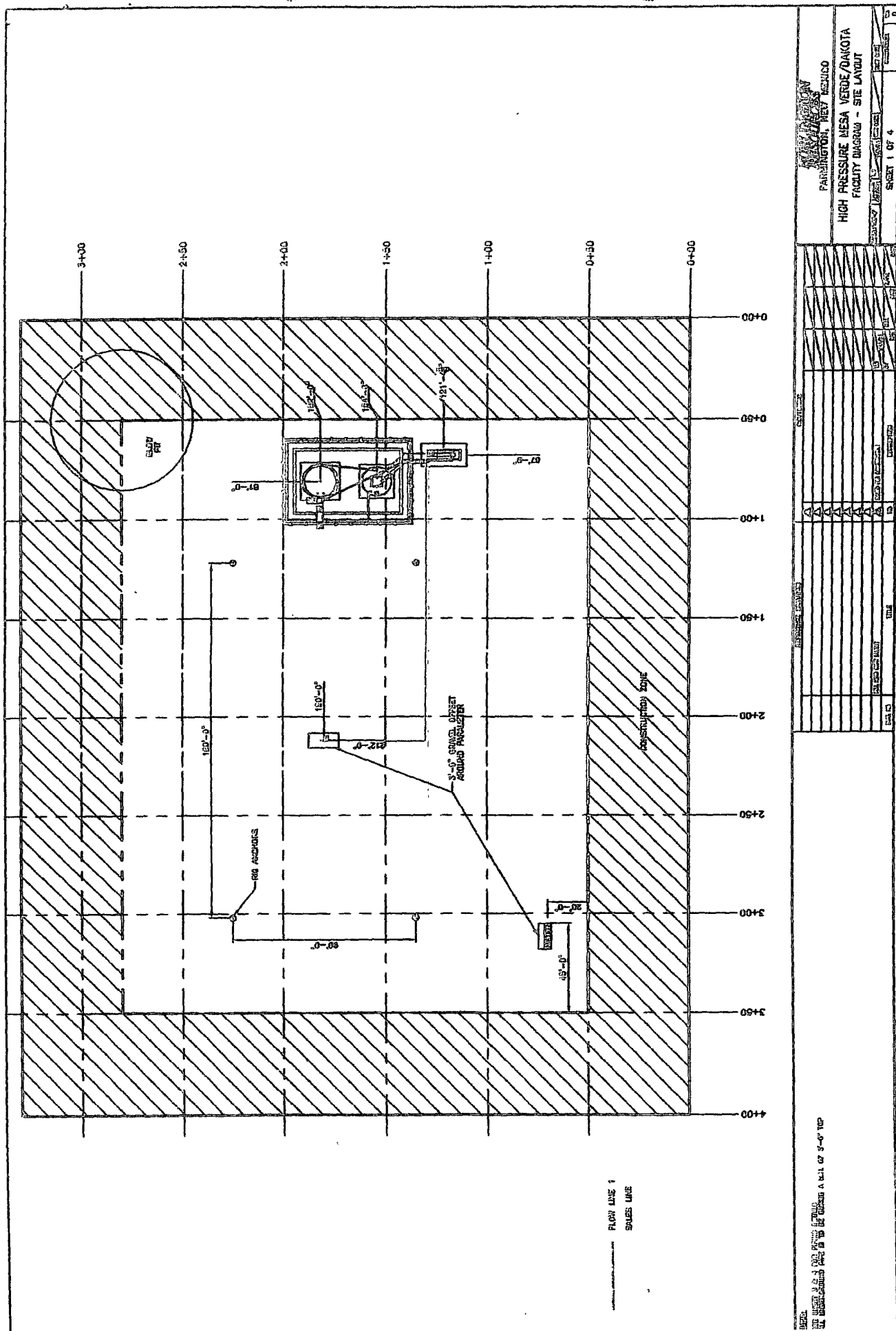
Burlington Resources

Completion/Workover Rig BOP Configuration 2,000 psi System

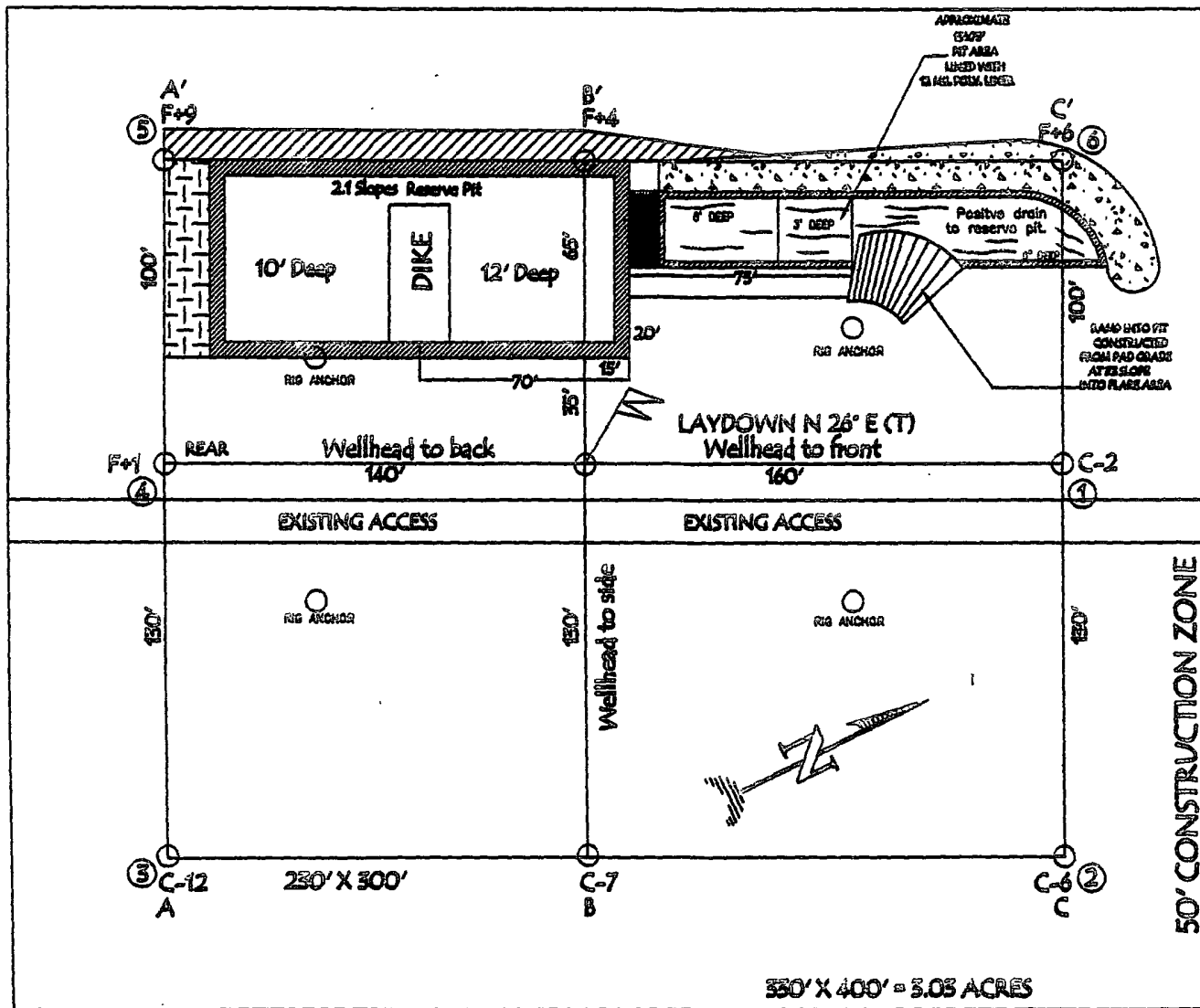


Minimum BOP installation for all Completion/Workover Operations. 7-1/16\"/>

Figure #2



BURLINGTON RESOURCES OIL & GAS COMPANY LP
SAN JUAN 28-6 UNIT #160P, 1805' FSL & 660' FWL
SECTION 30, T-28-N, R-6-W, NMPM, RIO ARriba COUNTY, NM
GROUND ELEVATION: 6579', DATE: MAY 12, 2005



NOTE: VECTOR SURVEYS IS NOT LIABLE FOR UNDERGROUND UTILITIES OR PIPELINES. CONTRACTOR SHOULD CALL ONE-CALL FOR LOCATION OF ANY MARKED OR UNMARKED BURIED PIPELINES OR CABLES ON WELL PAD AND OR ACCESS ROAD AT LEAST TWO (2) WORKING DAYS PRIOR TO CONSTRUCTION.

LATITUDE: 36° 37.8008' LONGITUDE: 107° 30.7816' NAD27

Directions from the Post Office
in Blanco, NM
to
Burlington Resources Oil & Gas Company LP
SAN JUAN 28-6 UNIT #160P
1805' FSL & 660' FWL,
Section 30, T28N, R6W, N.M.P.M., Rio Arriba County,
New Mexico

From the Post Office in Blanco, NM
Take Highway 64 East for 22.8 miles

turn right (southwesterly) for 1.96 miles,
turn right (southwesterly) for 1.30 miles,
to the top of snake hill,
turn right (westerly) for 3.0 miles,
turn left (southerly) for 3.1
stay right (southwesterly) @ y-intersection
for 0.1 miles to the staked location on access road.