

UNITED STATES
DEPARTMENT OF THE INTERIOR
BUREAU OF LAND MANAGEMENT

APPLICATION FOR PERMIT TO DRILL, DEEPEN, OR PLUG BACK

2005 FEB 16 AM 10 56

1a. Type of Work DRILL	5. Lease Number NMSF-079514 Unit Reporting Number 891001650C	
1b. Type of Well GAS	6. If Indian, All. or Tribe	
2. Operator BURLINGTON RESOURCES OIL & GAS COMPANY L.P. CONS. DIV.	7. Unit Agreement Name San Juan 29-7 Unit	
3. Address & Phone No. of Operator PO Box 4289, Farmington, NM 87499 (505) 326-9700	8. Farm or Lease Name San Juan 29-7 Unit 9. Well Number 507S	
4. Location of Well 1630' FSL, 960' FEL Latitude 36° 43.3731, Longitude 107° 30.9578	10. Field, Pool, Wildcat I Basin Fruitland Coal 11. Sec., Twn, Rge, Mer. (NMPM) Sec. 13, T-29-N, R-7-W API # 30-039-29467	
14. Distance in Miles from Nearest Town 22 miles from Blanco, New Mexico	12. County Rio Arriba	13. State NM
15. Distance from Proposed Location to Nearest Property or Lease Line 960'	17. Acres Assigned to Well 320 E/2	
16. Acres in Lease	18. Distance from Proposed Location to Nearest Well, Drig, Compl, or Applied for on this Lease 22'	
19. Proposed Depth 3410'	20. Rotary or Cable Tools Rotary	
21. Elevations (DF, FT, GR, Etc.) 6458' GR	22. Approx. Date Work will Start	
23. Proposed Casing and Cementing Program See Operations Plan attached		
24. Authorized by: <u>Nancy Olthmans</u> Senior Staff Specialist	<u>10-15-04</u> Date	

PERMIT NO. _____ APPROVAL DATE _____
APPROVED BY Wayne Townsend TITLE Acting AFM DATE 3-3-05

Archaeological Report attached

Threatened and Endangered Species Report submitted for the San Juan 29-7 Unit #33A

NOTE: This format is issued in lieu of U.S. BLM Form 3160-3

Title 18 U.S.C. Section 1001, makes it a crime for any person knowingly and willfully to make to any department or agency of the United States any false, fictitious or fraudulent statements or presentations as to any matter within its jurisdiction.

DRILLING OPERATIONS AUTHORIZED ARE
SUBJECT TO COMPLIANCE WITH ATTACHED
"GENERAL REQUIREMENTS".

This action is subject to technical and
procedural review pursuant to 43 CFR 3165.3
and appeal pursuant to 43 CFR 3165.4

NMOCD

DISTRICT II
811 South First, Artesia, N.M. 88210

DISTRICT III
1000 Rio Brazos Rd., Aztec, N.M. 87410

DISTRICT IV
2040 South Pacheco, Santa Fe, NM 87505

OIL CONSERVATION DIVISION

2040 South Pacheco
Santa Fe, NM 87505

Submit to Appropriate District Office
State Lease - 4 Copies
Fee Lease - 3 Copies

2005 FEB 16 AM 10:56 AMENDED REPORT

WELL LOCATION AND ACREAGE DEDICATION PLAT

*API Number 30-039-29467		*Pool Code 71629	*Pool Name 070 FARMINGTON NM Basin Fruitland Coal
*Property Code 7465	*Property Name SAN JUAN 29-7 UNIT		*Well Number 507S
*OGRID No. 14538	*Operator Name BURLINGTON RESOURCES OIL AND GAS COMPANY LP		*Elevation 6458'

¹⁰ Surface Location

UL or lot no.	Section	Township	Range	Lot Idn	Feet from the	North/South line	Feet from the	East/West line	County
1	13	29-N	7-W		1630'	SOUTH	960'	EAST	RIO ARRIBA

¹¹ Bottom Hole Location If Different From Surface

UL or lot no.	Section	Township	Range	Lot Idn	Feet from the	North/South line	Feet from the	East/West line	County
20 Dedicated Acres FC - E/320			21 Joint or Infill		24 Consolidation Code		22 Order No.		

NO ALLOWABLE WILL BE ASSIGNED TO THIS COMPLETION UNTIL ALL INTERESTS HAVE BEEN CONSOLIDATED
OR A NON-STANDARD UNIT HAS BEEN APPROVED BY THE DIVISION

16

MAR 2005
OIL CONS. DIV.
DIST. 2

USA SF-079514

LAT: 36°43.3731' N
LONG: 107°30.9578' W
NAD 1927

960'

N 00-00-57 E
2638.84'

USA SF-078423

N 89-51-45 W
2651.73'

LABATO, JUAN I ET UX

1630'

12

SOENS, ADOLPH ET UX
MCCARTY, CHAS W
MCCARTY, C W
SOENS, A ET UX

17 OPERATOR CERTIFICATION

I hereby certify that the information contained herein is true and complete to the best of my knowledge and belief.

Nancy Oltmanns
Signature
Nancy Oltmanns
Printed Name
Senior Staff Specialist
Title
10-15-04
Date

18 SURVEYOR CERTIFICATION

I hereby certify that the well location shown on this plat was plotted from field notes of actual surveys made by me or under my supervision, and that the same is true and correct to the best of my belief.

Date of Survey 11-1-03

Signature and Seal of Professional Surveyor

Certificate Number 15703

Office

Energy, Minerals and Natural Resources

May 27, 2004

District I

1625 N. French Dr., Hobbs, NM 88240

District II

1301 W. Grand Ave., Artesia, NM 88210

District III

1000 Rio Brazos Rd., Aztec, NM 87410

District IV

1220 S. St. Francis Dr., Santa Fe, NM 87505

OIL CONSERVATION DIVISION

1220 South St. Francis Dr.

Santa Fe, NM 87505

WELL API NO.

30-039-

5. Indicate Type of Lease

STATE ☐FEE ☐

6. State Oil & Gas Lease No.

Federal Lease NMSF-079514

7. Lease Name or Unit Agreement Name

San Juan 29-7 Unit

8. Well Number

507S

9. OGRID Number

14538

10. Pool name or Wildcat

Basin Fruitland Coal

SUNDRY NOTICES AND REPORTS ON WELLS
(DO NOT USE THIS FORM FOR PROPOSALS TO DRILL OR TO DEEPEN OR PLUG BACK TO A
DIFFERENT RESERVOIR. USE "APPLICATION FOR PERMIT" (FORM C-101) FOR SUCH
PROPOSALS.)

1. Type of Well:

Oil Well ☐Gas Well ☒

Other

2. Name of Operator

BURLINGTON RESOURCES OIL & GAS COMPANY LP

3. Address of Operator

3401 E. 30TH STREET, FARMINGTON, NM 87402

4. Well Location

Unit Letter I : 1630' feet from the South line and 960' feet from the East line
Section 13 Township 29N Range 7W NMPM County Rio Arriba

11. Elevation (Show whether DR, RKB, RT, GR, etc.)

Pit or Below-grade Tank Application

☐ or Closure ☐

Pit type New Drill Depth to Groundwater >100' Distance from nearest fresh water well >1000' Distance from nearest surface water >1000'

Pit Liner Thickness: na mil Below-Grade Tank: Volume bbls; Construction Material

12. Check Appropriate Box to Indicate Nature of Notice, Report or Other Data

NOTICE OF INTENTION TO:

PERFORM REMEDIAL WORK ☐TEMPORARILY ABANDON ☐PULL OR ALTER CASING ☐PLUG AND ABANDON ☐CHANGE PLANS ☐MULTIPLE COMPL ☐

SUBSEQUENT REPORT OF:

REMEDIAL WORK ☐COMMENCE DRILLING OPNS. ☐CASING/CEMENT JOB ☐ALTERING CASING ☐P AND A ☐

OTHER:

New Drill ☒OTHER: ☐

13. Describe proposed or completed operations. (Clearly state all pertinent details, and give pertinent dates, including estimated date of starting any proposed work). SEE RULE 1103. For Multiple Completions: Attach wellbore diagram of proposed completion or recompletion.

Burlington Resources proposes to construct a new drilling pit and an associated blow/flare pit. Based on Burlington's interpretation of the Ecosphere's risk ranking criteria, the new drilling pit and blow/flare pit will be an unlined pit as detailed in Burlington's Revised Drilling / Workover Pit Construction / Operation Procedures dated November 11, 2004 on file at the NMOCD office. A portion of the blow/flare pit will be designed to manage fluids, and that portion will be unlined, as per the risk ranking criteria. Burlington Resources anticipates closing these pits according to the Drilling / Workover Pit Closure Procedure dated August 2, 2004 on file at the NMOCD office.

I hereby certify that the information above is true and complete to the best of my knowledge and belief. I further certify that any pit or below-grade tank has been/will be constructed or closed according to NMOCD guidelines ☐, a general permit ☒ or an (attached) alternative OCD-approved plan ☐.

SIGNATURE Nancy Oltmanns TITLE Senior Staff Regulatory Specialist DATE 1/21/2004

Type or print name

Nancy Oltmanns

E-mail address:

noltmanns@br-inc.com

Telephone No.

505-326-9891

For State Use Only

APPROVED BY

TITLE

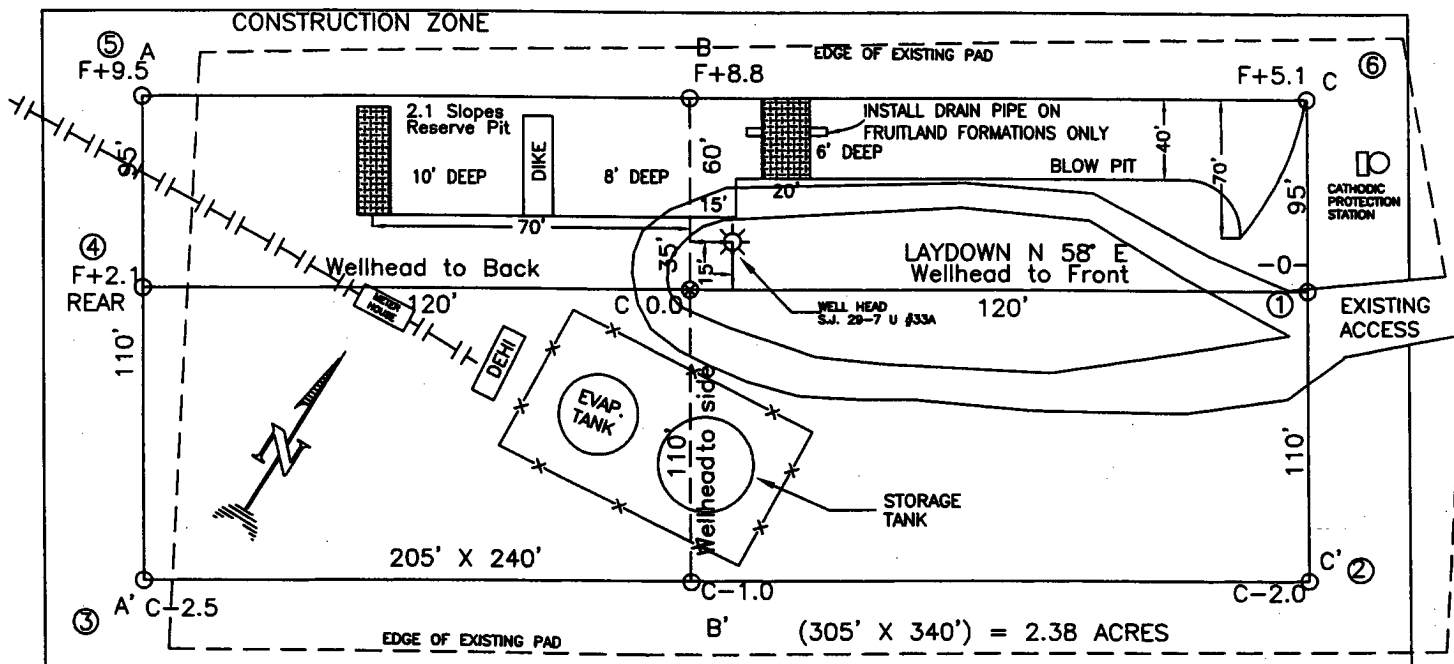
DATE

Conditions of Approval (if any):

DEPUTY OIL & GAS INSPECTOR, DIST. 5

MAR - 7 2005

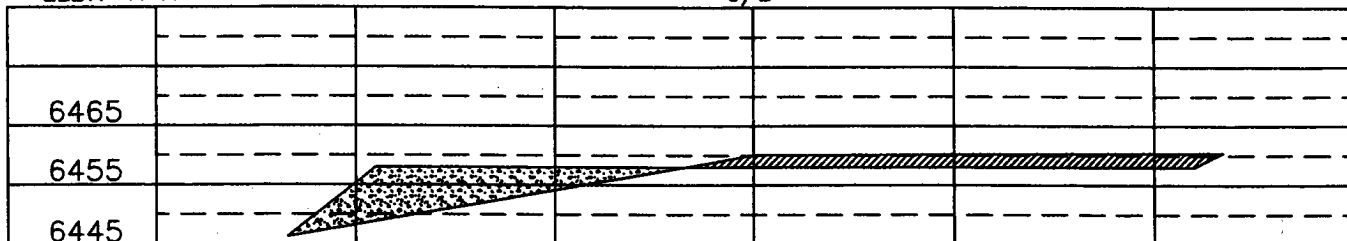
BURLINGTON RESOURCES OIL & GAS COMPANY LP
SAN JUAN 29-7 UNIT #507S, 1630' FSL 960' FEL
SECTION 13, T-29-N, R-7-W, N.M.P.M., RIO ARriba COUNTY, NEW MEXICO
GROUND ELEVATION: 6458', DATE: OCTOBER 14, 2003



RESERVE PIT DIKE: TO BE 8' ABOVE DEEP SIDE (OVERFLOW - 3' WIDE AND 1' ABOVE SHALLOW SIDE).
 BLOW PIT: OVERFLOW PIPE HALFWAY BETWEEN TOP AND BOTTOM AND TO EXTEND OVER PLASTIC LINER AND INTO BLOW PIT.

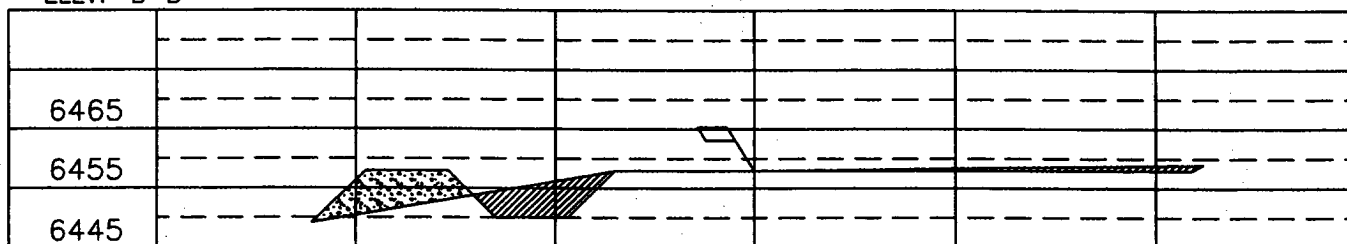
ELEV. A-A'

C/L

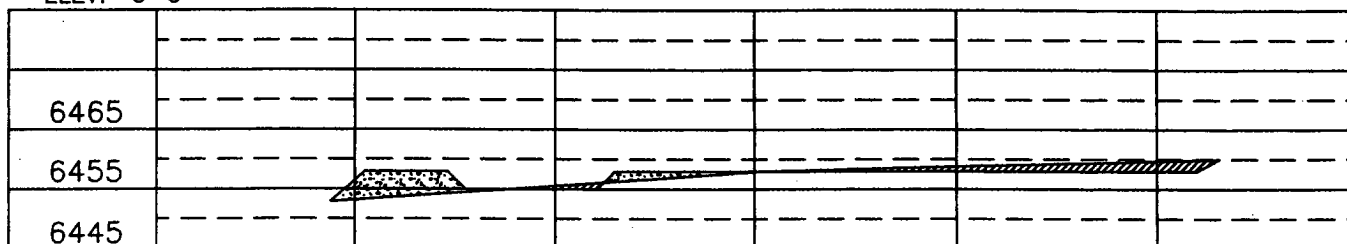


ELEV. B-B'

C/L



ELEV. C-C'



NOTE: VECTOR SURVEYS IS NOT LIABLE FOR UNDERGROUND UTILITIES OR PIPELINES.
 CONTRACTOR SHOULD CALL ONE-CALL FOR LOCATION OF ANY MARKED OR UNMARKED BURIED PIPELINES OR CABLES
 ON WELL PAD AND OR ACCESS ROAD AT LEAST TWO (2) WORKING DAYS PRIOR TO CONSTRUCTION.

OPERATIONS PLAN

Well Name: San Juan 29-7 Unit #507S
Location: 1630' FSL, 960' FEL, Section 13, T-29-N, R-7-W
Latitude 36° 43.3731, Longitude 107° 30.9578
Rio Arriba County, NM
Formation: Basin Fruitland Coal
Elevation: 6458' GR

Formation:	Top	Bottom	Contents
Surface	San Jose	2363'	
Ojo Alamo	2363'	2545'	aquifer
Kirtland	2545'	3116'	gas
Fruitland	3116'		gas
Intermediate casing	3066'		
Top of Coal	3116'		
Base of Coal	3325'		
Pictured Cliffs	3327'		
Total Depth	3410'		

Logging Program:
Open hole - none
Mud log - TD to 3066'

Coring Program: none

Mud Program:

<u>Interval</u>	<u>Type</u>	<u>Weight</u>	<u>Vis.</u>	<u>Fluid Loss</u>
0- 120'	Spud/Air/Air Mist	8.4-9.0	40-50	no control
120-3066'	Non-dispersed	8.4-9.0	30-60	no control
3066-3410'	Air/Mist			no control

Casing Program (as listed, the equivalent, or better):

<u>Hole Size</u>	<u>Depth Interval</u>	<u>Csg.Size</u>	<u>Wt.</u>	<u>Grade</u>
12 1/4"	0' - 120'	9 5/8"	32.3#	H-40
8 3/4"	0' - 3066'	7"	20.0#	J-55
6 1/4"	3066' - 3410'	open hole		

Alternate Casing Program (as listed, the equivalent, or better):

<u>Hole Size</u>	<u>Depth Interval</u>	<u>Csg.Size</u>	<u>Wt.</u>	<u>Grade</u>
12 1/4"	0' - 120'	9 5/8"	32.3#	H-40
8 3/4"	0' - 3066'	7"	20.0#	J-55
6 1/4"	3066' - 3410'	5 1/2"	15.5#	J-55

Tubing Program:

0' - 3410'	2 3/8"	4.7#	J-55
------------	--------	------	------

Float Equipment: 9 5/8" surface casing - saw tooth guide shoe. Centralizers will be run in accordance with Onshore Order #2.

7" intermediate casing - guide shoe and self-fill float collar. Standard centralizers run every other joint above shoe. Two turbolizing type centralizers - one below and one into the base of the Ojo Alamo @ 2545'. Standard centralizers thereafter every fourth joint up to the base of the surface pipe.

Wellhead Equipment: 9 5/8" x 7" x 2 3/8" x 11" 2000 psi xmas tree assembly.

Cementing:

9 5/8" surface casing -

Pre-Set Drilled Cement with 23 sx Type I, II cement with 20% flyash mixed at 14.5 ppg, 1.61 cu ft per sack yield. (37 cu ft of slurry, bring cement to surface) Wait on cement for 24 hours for pre-set holes before pressure testing or drilling out from under surface.

Conventionally Drilled:

Cement with 88 sx Type III cement with 0.25 pps Celloflake, 3% calcium chloride (113 cu ft of slurry, 200% excess, bring cement to surface) Wait on cement for 8 hrs for conventionally set holes before pressure testing or drilling out from under surface.

Wait on cement until cement establishes 250 psi at 60 degrees compressive strength prior to nipple up of BOP.

7" intermediate casing - lead w/268 sacks Premium Lite cement with 3% calcium chloride, 0.25 pps Celloflake, 5 pps LCM-1, 0.4% fluid loss, 0.4% sodium metasilicate. Tail with 90 sacks Type III cement with 1% calcium chloride, 0.25 pps Celloflake, 0.2% fluid loss (696 cu.ft., 50% excess to circulate to surface).

5 1/2" liner - will not be cemented if run.

Note: If open hole logs are run, cement volumes will be based on 25% excess over caliper volumes.

BOP and tests:

Surface to intermediate TD - 11" 2000 psi (minimum) double gate BOP stack (Reference Figure #1). Prior to drilling out surface casing, test BOPE to 600 psi for 30 min.

Intermediate TD to Total Depth - 7 1/6" 2000 psi (minimum) completion BOP stack (Reference Figure #2). Prior to drilling out intermediate casing, test BOPE and casing to 1500 psi for 30 minutes.

From surface to 7" TD - a choke manifold will be installed in accordance with Onshore Order No. 2 (Reference Figure #3). When the cavitation completion rig drills the production hole, the completion rig configuration will be used (Reference Figure #4). ~~no choke manifold will be used on cavitation rig operations.~~

Pipe rams will be actuated at least once each day and blind rams actuated once each trip to test proper functioning. An upper kelly cock valve with handle and drill string safety valves to fit each drill string will be maintained and available on the rig floor.

Additional information:

- The Fruitland Coal formation will be completed.
- Anticipated pore pressure for the Fruitland is 500 psi.
- This gas is dedicated.
- The east half of Section 13 is dedicated to this well.

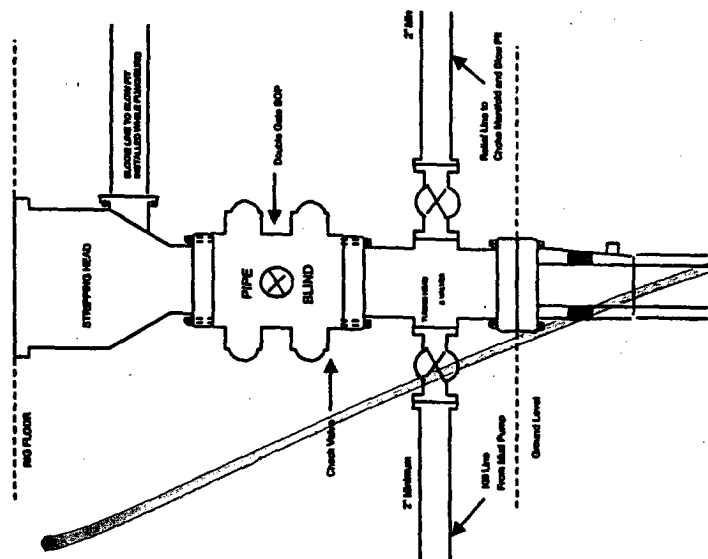
Drilling Engineer:

Robert B. Teller

Date:

10/31/04

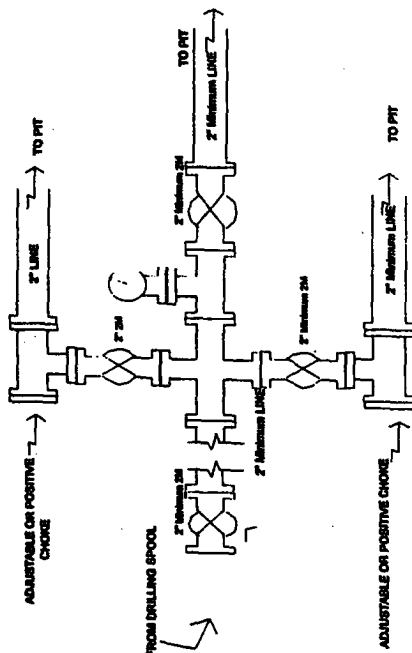
Completion/Workover Rig
BOP Configuration
2,000 psi System



Minimum BOP installation for all Completion/Workover Operations. 7-1/16" bore, 2000 psi minimum working pressure double gate BOP to be equipped with blind and pipe rams. A stripping head to be installed on the top of the BOP. All BOP equipment is 2000 psi working pressure or greater excluding 500 psi stripping head.

Figure #2

Drilling Rig
Choke Manifold Configuration
2000 psi System

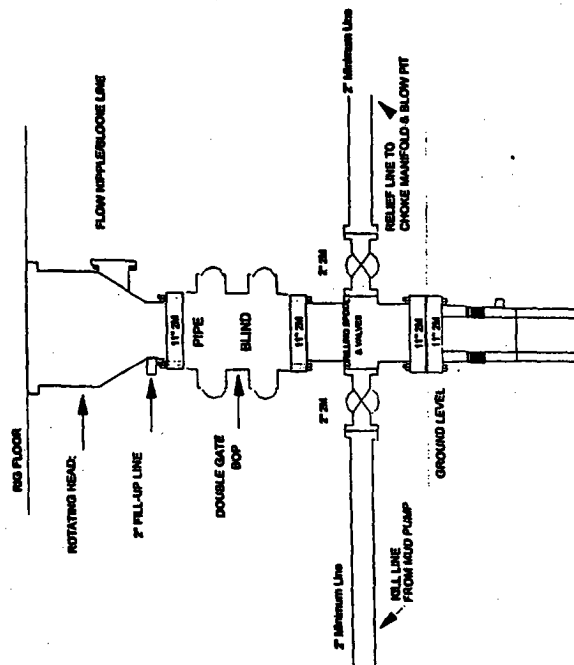


Choke manifold installation from Surface Casing Point to Total Depth. 2,000psi working pressure equipment with two chokes.

Figure #3

4-20-01

Drilling Rig
2000 psi System



BOP installation from Surface Casing Point to Total Depth. 11" Bore 10" Nominal, 2000 psi working pressure double gate BOP to be equipped with blind and pipe rams. A stripping head on top of ram preventers. All BOP equipment is 2,000 psi working pressure

4-20-01

Figure #1

BURLINGTON

RESOURCES

FIGURE #4

Cavitation Rig
BOP Configuration
2,000 psi Minimum System

