

District I
1625 N. French Dr., Hobbs, NM 88240
District II
1301 W. Grand Avenue, Artesia, NM 88210
District III
1000 Rio Brazos Road, Aztec, NM 87410
District IV
1220 S. St. Francis Dr., Santa Fe, NM 87505

State of New Mexico
Energy Minerals and Natural Resources

Form C-101
May 27, 2004

Oil Conservation Division
1220 South St. Francis Dr.
Santa Fe, NM 87505

Submit to appropriate District Office

☐ AMENDED REPORT

APPLICATION FOR PERMIT TO DRILL, RE-ENTER, DEEPEN, PLUGBACK, OR ADD A ZONE

¹ Operator Name and Address Basin Minerals Operating Company, c/o Walsh Engineering 7415 E. Main St., Farmington, NM 87402		² OGRID Number 233083
³ Property Code 34694	⁴ Property Name Atlantic A	⁵ Well No. 6B
⁹ Proposed Pool 1 Blanco Mesa Verde		¹⁰ Proposed Pool 2

7 Surface Location

UL or lot no.	Section	Township	Range	Lot Idn	Feet from the	North/South line	Feet from the	East/West line	County
F	26	31N	10W		1810'	North	2475'	West	San Juan

8 Proposed Bottom Hole Location If Different From Surface

UL or lot no.	Section	Township	Range	Lot Idn	Feet from the	North/South line	Feet from the	East/West line	County

Additional Well Information

¹¹ Work Type Code N	¹² Well Type Code G	¹³ Cable/Rotary R	¹⁴ Lease Type Code P	¹⁵ Ground Level Elevation 6281'
¹⁶ Multiple N	¹⁷ Proposed Depth 5800 +/-	¹⁸ Formation Mesa Verde	¹⁹ Contractor	²⁰ Spud Date
Depth to Groundwater >50'		Distance from nearest fresh water well >1000'		Distance from nearest surface water >1000'
Pit: Liner: Synthetic <input checked="" type="checkbox"/> 12 mils thick Clay <input type="checkbox"/> Pit Volume: 3500 bbls Drilling Method: Closed-Loop System <input type="checkbox"/> Fresh Water <input checked="" type="checkbox"/> Brine <input type="checkbox"/> Diesel/Oil-based <input type="checkbox"/> Gas/Air <input checked="" type="checkbox"/>				

21 Proposed Casing and Cement Program

Hole Size	Casing Size	Casing weight/foot	Setting Depth	Sacks of Cement	Estimated TOC
12-1/4"	9-5/8"	36.0#	200' +/-	110 sx (130 cu.ft.)	Surface
8-3/4"	7"	20.0#	3400' +/-	836 & 165 cuft	Surface
6-1/4"	4-1/2"	10.5#	5800' +/-	248 & 196 cu.ft.	3300'

²² Describe the proposed program. If this application is to DEEPEN or PLUG BACK, give the data on the present productive zone and proposed new productive zone. Describe the blowout prevention program, if any. Use additional sheets if necessary.

Basin Minerals Operating Company, proposes to drill a vertical well at the above described location and test the Mesa Verde formation. A 12-1/4" surface hole will be drilled to 200' where 9-5/8", 36# casing will be set and cemented to surface with 130 Cu.ft. of neat cement. After WOC a 2000 psi double ram or annular preventer will be installed and pressure tested to 1000 psi. An 8-3/4" hole will be drilled drilled with fresh water mud. 7", 20# casing will be set and cemented to surface with 836 cu.ft. of CI "B" with 2% SMS and 203 cu.ft. of CI "B" cement. A 6-1/4" hole will be drilled to approximately 5800' with air or air/mist. Induction and density logs will be run at TD. 4-1/2", 10.5# casing liner will be run from TD to 100' above the intermediate casing shoe and cement circulated with 248 cu.ft. of Premium Lite with additives and 198 cu.ft of Premium Lite with additives. The Mesa Verde formation will be selectively perforated and completed. The well will be connected to El Paso Field Services gathering system.

²³ I hereby certify that the information given above is true and complete to the best of my knowledge and belief. I further certify that the drilling pit will be constructed according to NMOC guidelines ☒, a general permit ☐, or an (attached) alternative OCD-approved plan ☐.

Printed name: Paul C. Thompson, P.E.

Title: Agent

E-mail Address: paul@walsheng.net

Date: 3/8/05

Phone: (505) 327-4892

OIL CONSERVATION DIVISION

Approved by:

Title: **SENIOR OIL & GAS INSPECTOR, DIST. 4**

Approval Date: **MAR 10 2005** Expiration Date: **MAR 10 2006**

Conditions of Approval Attached ☐

District I
PO Box 1980, Hobbs, NM 88241-1980

District II
PO Drawer DD, Artesia, NM 88211-0719

District III
1000 Rio Brazos Rd., Aztec, NM 87410

District IV
PO Box 2088, Santa Fe, NM 87504-2088

State of New Mexico
Energy, Minerals & Natural Resources Department

OIL CONSERVATION DIVISION
PO Box 2088
Santa Fe, NM 87504-2088

Form C-102
Revised February 21, 1994
Instructions on back
Submit to Appropriate District Office
State Lease - 4 Copies
Fee Lease - 3 Copies

☐ AMENDED REPORT

WELL LOCATION AND ACREAGE DEDICATION PLAT

*API Number 30045-32957		*Pool Code 72319	*Pool Name BLANCO MESAVERDE
*Property Code 34694	*Property Name ATLANTIC A		*Well Number 6B
*OGRID No. 233083	*Operator Name BASIN MINERALS Operating Company		*Elevation 6281'

¹⁰ Surface Location

UL or lot no.	Section	Township	Range	Lot Idn	Feet from the	North/South line	Feet from the	East/West line	County
F	26	31N	10W		1810	NORTH	2475	WEST	SAN JUAN

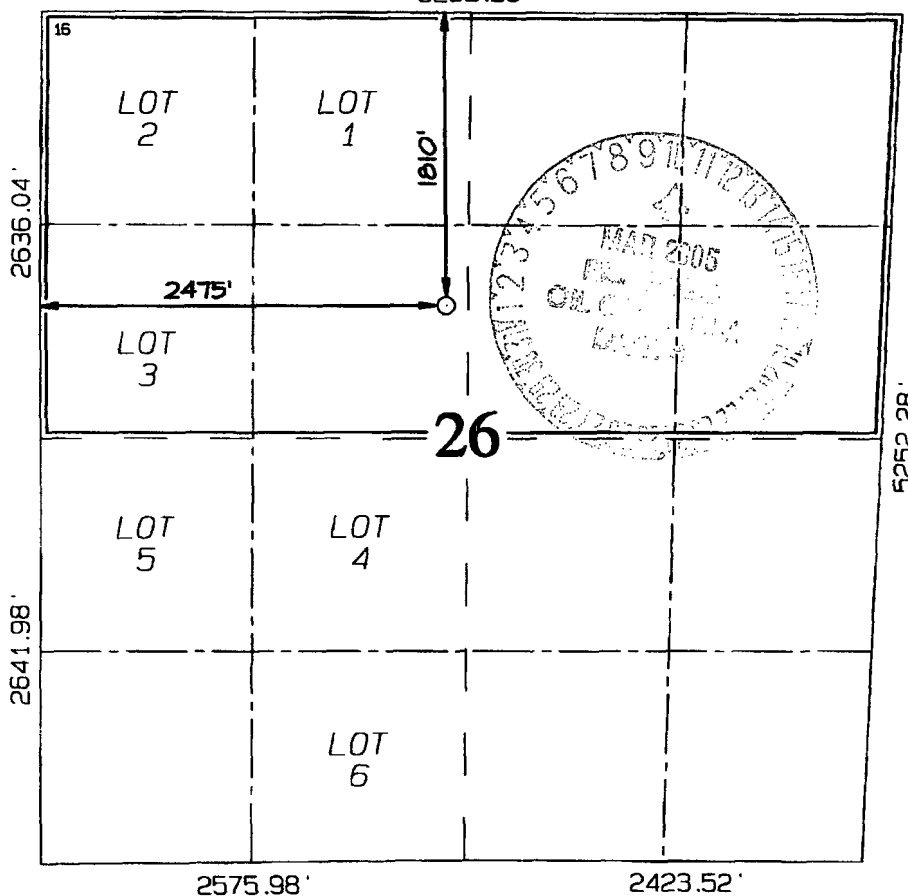
¹¹ Bottom Hole Location If Different From Surface

UL or lot no.	Section	Township	Range	Lot Idn	Feet from the	North/South line	Feet from the	East/West line	County

¹² Dedicated Acres 318.60 Acres - (N/2)	¹³ Joint or Infill	¹⁴ Consolidation Code	¹⁵ Order No.
---	-------------------------------	----------------------------------	-------------------------

NO ALLOWABLE WILL BE ASSIGNED TO THIS COMPLETION UNTIL ALL INTERESTS HAVE BEEN CONSOLIDATED OR A NON-STANDARD UNIT HAS BEEN APPROVED BY THE DIVISION

5252.28'



¹⁷ OPERATOR CERTIFICATION

I hereby certify that the information contained herein is true and complete to the best of my knowledge and belief

Paul C. Thompson
Signature
Paul C. Thompson
Printed Name
Agent
Title
9/9/03
Date

¹⁸ SURVEYOR CERTIFICATION

I hereby certify that the well location shown on this plat was plotted from field notes of actual surveys made by me or under my supervision, and that the same is true and correct to the best of my belief.

Date of Survey: JULY 24, 2003

Signature and Seal of Professional Surveyor



JASON C. EDWARDS
Certificate Number 15269