

UNITED STATES  
DEPARTMENT OF THE INTERIOR  
BUREAU OF LAND MANAGEMENT

Sundry Notices and Reports on Wells

1. Type of Well  
GAS

2. Name of Operator  
**BURLINGTON**  
RESOURCES OIL & GAS COMPANY LP

3. Address & Phone No. of Operator  
PO Box 4289, Farmington, NM 87499 (505) 326-9700

4. Location of Well, Footage, Sec., T, R, M  
1150' FSL, 1150' FWL, Sec. 19, T-27-N, R-5-W, NMPM

5. Lease Number  
NMSF-079392

6. If Indian, All. or  
Tribe Name

7. Unit Agreement Name

San Juan 27-5 Unit  
8. Well Name & Number  
San Juan 27-5 U #133  
9. API Well No.  
30-039-20402  
10. Field and Pool  
Blanco MV/Basin DK  
11. County and State  
Rio Arriba Co, NM

12. CHECK APPROPRIATE BOX TO INDICATE NATURE OF NOTICE, REPORT, OTHER DATA

Type of Submission

☒ Notice of Intent  
☐ Subsequent Report  
☐ Final Abandonment

Type of Action

☐ Abandonment  
☒ Recompletion  
☐ Plugging Back  
☐ Casing Repair  
☒ Altering Casing  
☒ Other - Commingle  
☐ Change of Plans  
☐ New Construction  
☐ Non-Routine Fracturing  
☐ Water Shut off  
☐ Conversion to Injection

13. Describe Proposed or Completed Operations

It is intended to recomplate the subject well to the Mesaverde formation according to the procedure below and the attached wellbore diagram. The well will then be down hole commingled. A down hole commingle application will be submitted for approval.

Move in, rig up. Trip out of hole with tubing. Trip in hole, set cast iron bridge plug at 7224'. Run cement bond log. Pressure test casing to 3500 psi for 15 minutes. Perforate and fracture stimulate the Point Lookout, Menefee and Cliff House formations. Set cast iron bridge plug at approximately 4600'. Shoot 1 squeeze hole at approximately 4330'. Set cement retainer at approximately 4300'. Circulate 50 sacks of Type III (1.39 yield, 14.5 ppg) cement below retainer. Wait on cement. Run cement bond log. Perforate and fracture stimulate the Lewis formation. Flow back well. Mill out retainer, frac plugs and cast iron bridge plug over Dakota. Clean out as required. Land tubing. Rig down, move off. Return well to production.

CONDITIONS OF APPROVAL  
Adhere to previously issued stipulations.

14. I hereby certify that the foregoing is true and correct.

Signed Nancy Olthmann Title Senior Staff Specialist Date 3/9/05

(This space for Federal or State Office use)

APPROVED BY Jim Loh Title Petr. Eng Date 3/12/05  
CONDITION OF APPROVAL, if any:

Title 18 U.S.C. Section 1001, makes it a crime for any person knowingly and willfully to make any department or agency of the United States any false, fictitious or fraudulent statements or representations as to any matter within its jurisdiction.

NMOC

**District I**

1625 N. French Dr., Hobbs, NM 88240

**District II**

1301 W. Grand Ave., Artesia, NM 88210

**District III**

1000 Rio Brazos Rd., Aztec, NM 87410

**District IV**1220 S. St Francis Dr., Santa Fe, NM  
87505

State of New Mexico  
Energy, Minerals and Natural Resources  
Oil Conservation Division  
1220 S. St Francis Dr.  
Santa Fe, NM 87505

Form C-102

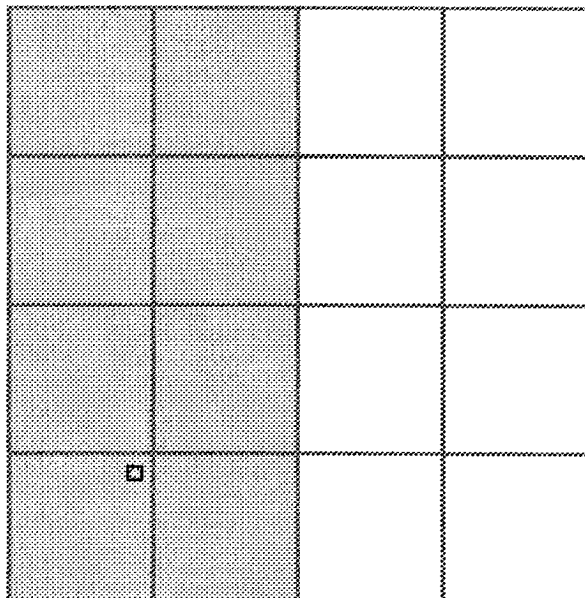
Permit 7970

**WELL LOCATION AND ACREAGE DEDICATION PLAT**

API Number 30-039-20402	Pool Name BLANCO-MESAVERDE (PRORATED GAS)	Pool Code 72319
Property Code 7454	Property Name SAN JUAN 27 5 UNIT	Well No. 133
OGRID No. 14538	Operator Name BURLINGTON RESOURCES OIL & GAS CO	Elevation 6348

**Surface And Bottom Hole Location**

UL or Lot M	Section 19	Township 27N	Range 05W	Lot Idn	Feet From 1150	N/S Line S	Feet From 1150	E/W Line W	County Rio Arriba
Dedicated Acres 321.76		Joint or Infill		Consolidation Code		Order No.			

**OPERATOR CERTIFICATION**

*I hereby certify that the information contained herein is true and complete to the best of my knowledge and belief.*

Electronically Signed By: *Nancy Oltmanns*

Title: Senior Staff Regulatory Specialist

Date: 3/9/05

**SURVEYOR CERTIFICATION**

*I hereby certify that the well location shown on this plat was plotted from field notes of actual surveys made by me or under my supervision, and that the same is true and correct to the best of my belief.*

Surveyed By: David Vilven

Date of Survey: 03/24/1971

Certificate Number: 1760

# San Juan 27-5 Unit #133

1150' FSL , 1150' FWL  
Unit M, Section 19, T27N, R05W  
Rio Arriba County, NM

LAT:

LONG:

GL = 6,348'

KB= 6,352'

## Current Wellbore Diagram

### Surface Casing:

9-5/8" 32.3# H-40  
Set @ 236'  
TOC @ circ to surf  
235 sx, circ to surf

### Intermediate Casing:

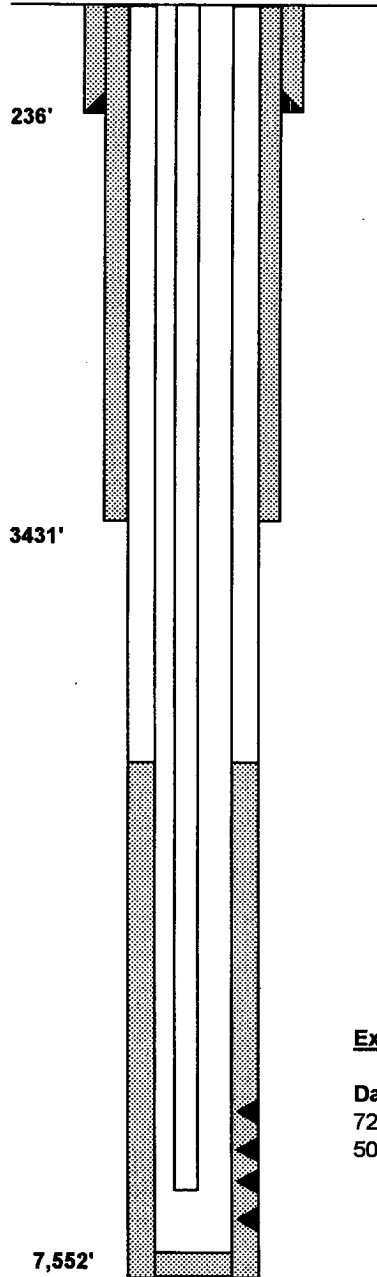
7" 20# J-55  
Set @ 3,431'  
TOC @ 2,048'  
125 sx

### Tubing:

1-1/2"  
Set @ 7477

### Production Casing:

4-1/2" 10.5# J-55  
Set @ 7,552'  
TOC @ 4619'



Mesa Verde 4,690'  
Point Lookout 5,163'  
Gallup 6,388'  
Greenhorn 7,168'  
Graneros 7,225'  
Two Wells 7,341'

### Existing Stimulation:

Dakota  
7274' - 7474'  
50,000# sand, 49,900 gal slickwater

PBTD= 7,536'  
TD= 7,552'