

**UNITED STATES
DEPARTMENT OF THE INTERIOR
BUREAU OF LAND MANAGEMENT**

RECEIVED**SEP 27 2011**

Sundry Notices and Reports on Wells

Farmington Field Office
Bureau of Land Management1. Type of Well
GAS

2. Name of Operator

ConocoPhillips

3. Address & Phone No. of Operator

PO Box 4289, Farmington, NM 87499 (505) 326-9700

4. Location of Well, Footage, Sec., T, R, M

Unit L (NWSW), 1739' FNL & 861' FWL, Section 28, T24N, R3W, NMPM

5. Lease Number
SF-0789146. If Indian, All. or
Tribe Name7. Unit Agreement Name
Lindrith B Unit8. Well Name & Number
Lindrith B Unit 2

9. API Well No.

30-039-22138

10. Field and Pool
Lindrith Gallup-Dakota, West11. County and State
Rio Arriba, NM**12. CHECK APPROPRIATE BOX TO INDICATE NATURE OF NOTICE, REPORT, OTHER DATA**

Type of Submission

Type of Action

☒

Notice of Intent

☐

Abandonment

☐

Change of Plans

☒

Other -

Payadd

☐

Subsequent Report

☐

Recompletion

☐

New Construction

☐

Final Abandonment

☐

Plugging

☐

Non-Routine Fracturing

☐

Casing Repair

☐

Water Shut off

☐

Altering Casing

☐

Conversion to Injection

13. Describe Proposed or Completed Operations

ConocoPhillips Company requests permission to add Gallup pay to the subject well per the attached procedure and current wellbore schematic.

Submit CBL to Agencies for review before Remedial work

14. I hereby certify that the foregoing is true and correct.

Signed Crystal Tafoya Crystal TafoyaTitle Staff Regulatory TechnicianDate 9/27/11

(This space for Federal or State Office use)

APPROVED BY Original Signed: Stephen Mason

Title _____

Date _____

SEP 27 2011

CONDITION OF APPROVAL, if any:

Title 18 U S C Section 1001, makes it a crime for any person knowingly and willfully to make any department or agency of the United States any false, fictitious or fraudulent statements or representations as to any matter within its jurisdiction

MMOCD A

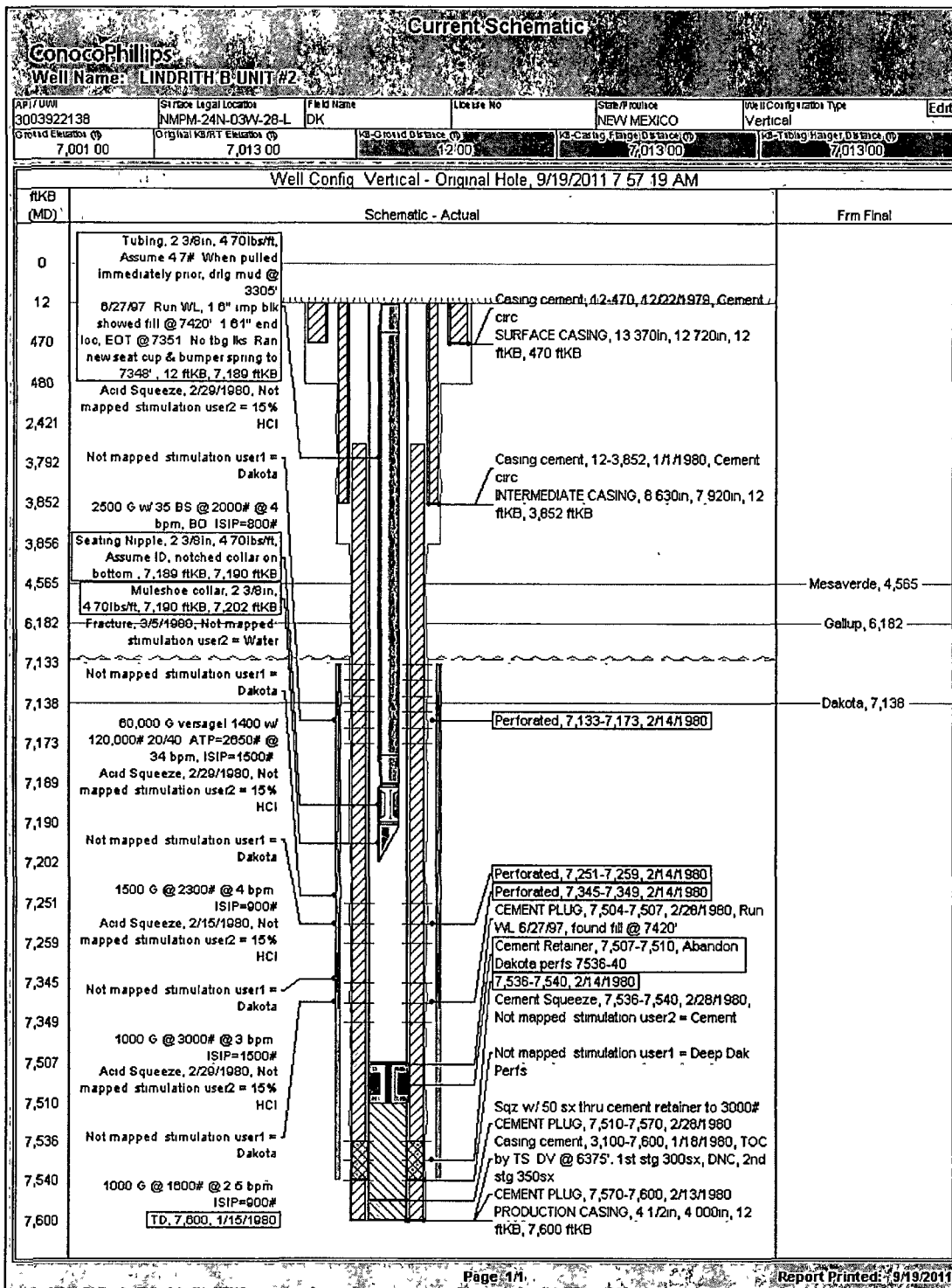
LINDRITH B Unit #2

**Unit L, Section 28, Township 24N, Range 03W
Rio Arriba Co., NM
API#: 3003922138**

**Gallup Payadd Sundry
Revised
9/19/11**

Procedure:

1. MIRU service rig. TOOH with current tubing string.
2. MIRU wireline unit. RIH with a gauge ring for 4-1/2" 11.60#/ft casing. POOH
3. RIH with a 4-1/2" CBP and set at +/- 7090'. POOH
4. Pressure test the casing to 600psi.
5. MIRU wireline, run a GR/CCL/CBL log from 7000' to surface. The CBL will be used to determine an accurate TOC and the GR will be used to determine formation tops. Remedial cement work will be completed as needed.
6. Perforate and fracture stimulate the Gallup formation.
7. Open well to flow back frac on clean-up.
8. Set a CBP over the Gallup formation.
9. RIH with mill and drill out the plug over the Gallup.
10. Obtain a Gallup flowrate up the annulus on a 1/2" choke to the atmosphere and collect a gas sample.
11. RIH with mill, drill out plug @ 7090'.
12. Cleanout to PBTD @ 7504'. Land production tubing and obtain a commingled flowrate up the annulus on a 1/2" choke to the atmosphere.
13. Release service rig and turn over to production.



District I1625 N French Dr , Hobbs, NM 88240
Phone (575) 393-6161 Fax (575) 393-0720**District II**811 S First St , Artesia, NM 88210
Phone (575) 748-1283 Fax (575) 748-9720**District III**1000 Rio Brazos Rd , Aztec, NM 87410
Phone (505) 334-6178 Fax (505) 334-6170**District IV**1220 S St Francis Dr , Santa Fe, NM 87505
Phone (505) 476-3470 Fax (505) 476-3462**State of New Mexico**
Energy, Minerals and Natural Resources**Oil Conservation Division****1220 S. St Francis Dr.****Santa Fe, NM 87505**Form C-102
August 1, 2011

Permit 138403

RCVD OCT 11 '11
OIL CONS. DIV.**DIST. 3****WELL LOCATION AND ACREAGE DEDICATION PLAT**

| | | |
|-------------------------------------|---|---|
| 1 API Number 30-039-22138 | 2 Pool Code 39189 | 3 Pool Name LINDRITH GALLUP-DAKOTA, WEST |
| 4 Property Code 31778 | 5 Property Name LINDRITH B UNIT | 6 Well No 002 |
| 7 OGRID No 217817 | 8 Operator Name CONOCOPHILLIPS COMPANY | 9 Elevation 7001 |

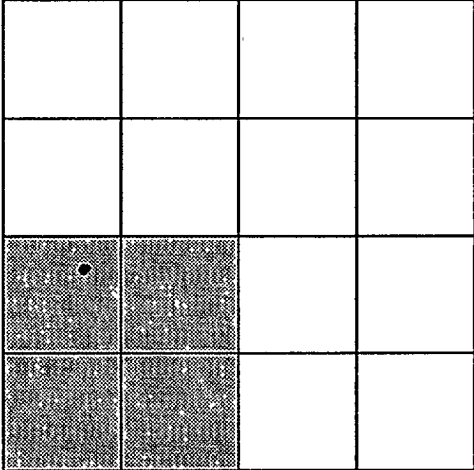
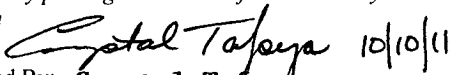
10. Surface Location

| | | | | | | | | | |
|----------|---------|----------|-------|---------|-----------|----------|-----------|----------|------------|
| UL - Lot | Section | Township | Range | Lot Idn | Feet From | N/S Line | Feet From | E/W Line | County |
| L | 28 | 24N | 03W | | 1739 | N | 861 | W | RIO ARRIBA |

11. Bottom Hole Location If Different From Surface

| | | | | | | | | | |
|------------------------------|---------|--------------------|-------|-----------------------|-----------|-------------|-----------|----------|--------|
| UL - Lot | Section | Township | Range | Lot Idn | Feet From | N/S Line | Feet From | E/W Line | County |
| 12 Dedicated Acres 160 00 | | 13 Joint or Infill | | 14 Consolidation Code | | 15 Order No | | | |

NO ALLOWABLE WILL BE ASSIGNED TO THIS COMPLETION UNTIL ALL INTERESTS HAVE BEEN CONSOLIDATED OR A NON-STANDARD UNIT HAS BEEN APPROVED BY THE DIVISION

| | |
|---|--|
|  | OPERATOR CERTIFICATION <i>I hereby certify that the information contained herein is true and complete to the best of my knowledge and belief, and that this organization either owns a working interest or unleased mineral interest in the land including the proposed bottom hole location(s) or has a right to drill this well at this location pursuant to a contract with an owner of such a mineral or working interest, or to a voluntary pooling agreement or a compulsory pooling order heretofore entered by the division</i>  E-Signed By: Crystal Tafuya Title Staff Regulatory Tech. Date 10/10/2011 |
| | SURVEYOR CERTIFICATION <i>I hereby certify that the well location shown on this plat was plotted from field notes of actual surveys made by me or under my supervision, and that the same is true and correct to the best of my belief</i> Surveyed By: H.A. Carson, Jr. Date of Survey: 7/11/1979 Certificate Number: 5063 |