

District I
1625 N. French Dr., Hobbs, NM 88240
District II
1301 W. Grand Avenue, Artesia, NM 88210
District III
1000 Rio Brazos Road, Aztec, NM 87410
District IV
1220 S. St. Francis Dr., Santa Fe, NM 87505

State of New Mexico
Energy Minerals and Natural Resources
Department
Oil Conservation Division
1220 South St. Francis Dr.
Santa Fe, NM 87505
Part of Devon Clean-up Program

Form C-144
July 21, 2008

For temporary pits, closed-loop systems, and below-grade tanks, submit to the appropriate NMOCD District Office.
For permanent pits and exceptions submit to the Santa Fe Environmental Bureau office and provide a copy to the appropriate NMOCD District Office.

593

**Pit, Closed-Loop System, Below-Grade Tank, or
Proposed Alternative Method Permit or Closure Plan Application**

Type of action: ☐ Permit of a pit, closed-loop system, below-grade tank, or proposed alternative method
☒ Closure of a pit, closed-loop system, below-grade tank, or proposed alternative method
☐ Modification to an existing permit
☐ Closure plan only submitted for an existing permitted or non-permitted pit, closed-loop system, below-grade tank, or proposed alternative method

Instructions: Please submit one application (Form C-144) per individual pit, closed-loop system, below-grade tank or alternative request

Please be advised that approval of this request does not relieve the operator of liability should operations result in pollution of surface water, ground water or the environment. Nor does approval relieve the operator of its responsibility to comply with any other applicable governmental authority's rules, regulations or ordinances.

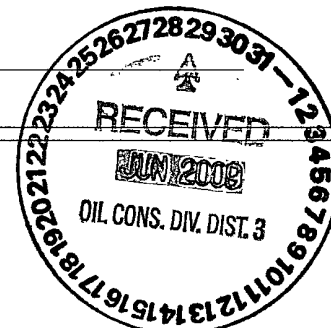
1.
Operator: DEVON ENERGY PRODUCTION COMPANY, L.P. OGRID #: 6137
Address: c/o Mike Pippin LLC, 3104 N. Sullivan, Farmington, NM 87401
Facility or well name: NEBU #256H
API Number: 30-045-34685 OCD Permit Number: _____
U/L or Qtr/Qtr B Section 34 Township 31-N Range 07-W County: San Juan
Center of Proposed Design: Latitude 36.86195 Longitude -107.55837 NAD: ☐ 1927 ☒ 1983
Surface Owner: ☒ Federal ☐ State ☐ Private ☐ Tribal Trust or Indian Allotment

2.
☒ **Pit:** Subsection F or G of 19.15.17.11 NMAC
Temporary: ☒ Drilling ☐ Workover
☐ Permanent ☐ Emergency ☐ Cavitation ☐ P&A
☒ Lined ☐ Unlined Liner type: Thickness 12 mil ☒ LLDPE ☐ HDPE ☐ PVC ☐ Other _____
☒ String-Reinforced
Liner Seams: ☐ Welded ☐ Factory ☐ Other _____ Volume: 12,857 bbl Dimensions: L 120' x W 75' x D 10'

3.
☐ **Closed-loop System:** Subsection H of 19.15.17.11 NMAC
Type of Operation: ☐ P&A ☐ Drilling a new well ☐ Workover or Drilling (Applies to activities which require prior approval of a permit or notice of intent)
☐ Drying Pad ☐ Above Ground Steel Tanks ☐ Haul-off Bins ☐ Other _____
☐ Lined ☐ Unlined Liner type: Thickness _____ mil ☐ LLDPE ☐ HDPE ☐ PVC ☐ Other _____
Liner Seams: ☐ Welded ☐ Factory ☐ Other _____

4.
☐ **Below-grade tank:** Subsection I of 19.15.17.11 NMAC
Volume: _____ bbl Type of fluid: _____
Tank Construction material: _____
☐ Secondary containment with leak detection ☐ Visible sidewalls, liner, 6-inch lift and automatic overflow shut-off
☐ Visible sidewalls and liner ☐ Visible sidewalls only ☐ Other _____
Liner type: Thickness _____ mil ☐ HDPE ☐ PVC ☐ Other _____

5.
☐ **Alternative Method:**
Submittal of an exception request is required. Exceptions must be submitted to the Santa Fe Environmental Bureau office for consideration of approval.



23

6.

Fencing: Subsection D of 19.15.17.11 NMAC (*Applies to permanent pits, temporary pits, and below-grade tanks*)

- ☐ Chain link, six feet in height, two strands of barbed wire at top (*Required if located within 1000 feet of a permanent residence, school, hospital, institution or church*)
- ☐ Four foot height, four strands of barbed wire evenly spaced between one and four feet
- ☐ Alternate. Please specify _____

7.

Netting: Subsection E of 19.15.17.11 NMAC (*Applies to permanent pits and permanent open top tanks*)

- ☐ Screen ☐ Netting ☐ Other _____
- ☐ Monthly inspections (If netting or screening is not physically feasible)

8.

Signs: Subsection C of 19.15.17.11 NMAC

- ☐ 12"x 24", 2" lettering, providing Operator's name, site location, and emergency telephone numbers
- ☐ Signed in compliance with 19.15.3.103 NMAC

9.

Administrative Approvals and Exceptions:

Justifications and/or demonstrations of equivalency are required. Please refer to 19.15.17 NMAC for guidance.

Please check a box if one or more of the following is requested, if not leave blank:

- ☐ Administrative approval(s): Requests must be submitted to the appropriate division district or the Santa Fe Environmental Bureau office for consideration of approval.
- ☐ Exception(s): Requests must be submitted to the Santa Fe Environmental Bureau office for consideration of approval.

10.

Siting Criteria (regarding permitting): 19.15.17.10 NMAC

Instructions: The applicant must demonstrate compliance for each siting criteria below in the application. Recommendations of acceptable source material are provided below. Requests regarding changes to certain siting criteria may require administrative approval from the appropriate district office or may be considered an exception which must be submitted to the Santa Fe Environmental Bureau office for consideration of approval. Applicant must attach justification for request. Please refer to 19.15.17.10 NMAC for guidance. Siting criteria does not apply to drying pads or above-grade tanks associated with a closed-loop system.

Ground water is less than 50 feet below the bottom of the temporary pit, permanent pit, or below-grade tank. - NM Office of the State Engineer - iWATERS database search; USGS; Data obtained from nearby wells	<input type="checkbox"/> Yes <input type="checkbox"/> No
Within 300 feet of a continuously flowing watercourse, or 200 feet of any other significant watercourse or lakebed, sinkhole, or playa lake (measured from the ordinary high-water mark). - Topographic map; Visual inspection (certification) of the proposed site	<input type="checkbox"/> Yes <input type="checkbox"/> No
Within 300 feet from a permanent residence, school, hospital, institution, or church in existence at the time of initial application. (Applies to temporary, emergency, or cavitation pits and below-grade tanks) - Visual inspection (certification) of the proposed site; Aerial photo; Satellite image	<input type="checkbox"/> Yes <input type="checkbox"/> No <input type="checkbox"/> NA
Within 1000 feet from a permanent residence, school, hospital, institution, or church in existence at the time of initial application. (Applies to permanent pits) - Visual inspection (certification) of the proposed site; Aerial photo; Satellite image	<input type="checkbox"/> Yes <input type="checkbox"/> No <input type="checkbox"/> NA
Within 500 horizontal feet of a private, domestic fresh water well or spring that less than five households use for domestic or stock watering purposes, or within 1000 horizontal feet of any other fresh water well or spring, in existence at the time of initial application. - NM Office of the State Engineer - iWATERS database search; Visual inspection (certification) of the proposed site	<input type="checkbox"/> Yes <input type="checkbox"/> No
Within incorporated municipal boundaries or within a defined municipal fresh water well field covered under a municipal ordinance adopted pursuant to NMSA 1978, Section 3-27-3, as amended. - Written confirmation or verification from the municipality; Written approval obtained from the municipality	<input type="checkbox"/> Yes <input type="checkbox"/> No
Within 500 feet of a wetland. - US Fish and Wildlife Wetland Identification map; Topographic map; Visual inspection (certification) of the proposed site	<input type="checkbox"/> Yes <input type="checkbox"/> No
Within the area overlying a subsurface mine. - Written confirmation or verification or map from the NM EMNRD-Mining and Mineral Division	<input type="checkbox"/> Yes <input type="checkbox"/> No
Within an unstable area. - Engineering measures incorporated into the design; NM Bureau of Geology & Mineral Resources; USGS; NM Geological Society; Topographic map	<input type="checkbox"/> Yes <input type="checkbox"/> No
Within a 100-year floodplain. - FEMA map	<input type="checkbox"/> Yes <input type="checkbox"/> No

11.

Temporary Pits, Emergency Pits, and Below-grade Tanks Permit Application Attachment Checklist: Subsection B of 19.15.17.9 NMAC**Instructions:** Each of the following items must be attached to the application. Please indicate, by a check mark in the box, that the documents are attached.

- ☐ Hydrogeologic Report (Below-grade Tanks) - based upon the requirements of Paragraph (4) of Subsection B of 19.15.17.9 NMAC
☐ Hydrogeologic Data (Temporary and Emergency Pits) - based upon the requirements of Paragraph (2) of Subsection B of 19.15.17.9 NMAC
☐ Siting Criteria Compliance Demonstrations - based upon the appropriate requirements of 19.15.17.10 NMAC
☐ Design Plan - based upon the appropriate requirements of 19.15.17.11 NMAC
☐ Operating and Maintenance Plan - based upon the appropriate requirements of 19.15.17.12 NMAC
☐ Closure Plan (Please complete Boxes 14 through 18, if applicable) - based upon the appropriate requirements of Subsection C of 19.15.17.9 NMAC and 19.15.17.13 NMAC
☐ Previously Approved Design (attach copy of design) API Number: _____ or Permit Number: _____

12.

Closed-loop Systems Permit Application Attachment Checklist: Subsection B of 19.15.17.9 NMAC**Instructions:** Each of the following items must be attached to the application. Please indicate, by a check mark in the box, that the documents are attached.

- ☐ Geologic and Hydrogeologic Data (only for on-site closure) - based upon the requirements of Paragraph (3) of Subsection B of 19.15.17.9
☐ Siting Criteria Compliance Demonstrations (only for on-site closure) - based upon the appropriate requirements of 19.15.17.10 NMAC
☐ Design Plan - based upon the appropriate requirements of 19.15.17.11 NMAC
☐ Operating and Maintenance Plan - based upon the appropriate requirements of 19.15.17.12 NMAC
☐ Closure Plan (Please complete Boxes 14 through 18, if applicable) - based upon the appropriate requirements of Subsection C of 19.15.17.9 NMAC and 19.15.17.13 NMAC
☐ Previously Approved Design (attach copy of design) API Number: _____
☐ Previously Approved Operating and Maintenance Plan API Number: _____ (Applies only to closed-loop system that use above ground steel tanks or haul-off bins and propose to implement waste removal for closure)

13.

Permanent Pits Permit Application Checklist: Subsection B of 19.15.17.9 NMAC**Instructions:** Each of the following items must be attached to the application. Please indicate, by a check mark in the box, that the documents are attached.

- ☐ Hydrogeologic Report - based upon the requirements of Paragraph (1) of Subsection B of 19.15.17.9 NMAC
☐ Siting Criteria Compliance Demonstrations - based upon the appropriate requirements of 19.15.17.10 NMAC
☐ Climatological Factors Assessment
☐ Certified Engineering Design Plans - based upon the appropriate requirements of 19.15.17.11 NMAC
☐ Dike Protection and Structural Integrity Design - based upon the appropriate requirements of 19.15.17.11 NMAC
☐ Leak Detection Design - based upon the appropriate requirements of 19.15.17.11 NMAC
☐ Liner Specifications and Compatibility Assessment - based upon the appropriate requirements of 19.15.17.11 NMAC
☐ Quality Control/Quality Assurance Construction and Installation Plan
☐ Operating and Maintenance Plan - based upon the appropriate requirements of 19.15.17.12 NMAC
☐ Freeboard and Overtopping Prevention Plan - based upon the appropriate requirements of 19.15.17.11 NMAC
☐ Nuisance or Hazardous Odors, including H₂S, Prevention Plan
☐ Emergency Response Plan
☐ Oil Field Waste Stream Characterization
☐ Monitoring and Inspection Plan
☐ Erosion Control Plan
☐ Closure Plan - based upon the appropriate requirements of Subsection C of 19.15.17.9 NMAC and 19.15.17.13 NMAC

14.

Proposed Closure: 19.15.17.13 NMAC**Instructions:** Please complete the applicable boxes, Boxes 14 through 18, in regards to the proposed closure plan.

- Type: ☐ Drilling ☐ Workover ☐ Emergency ☐ Cavitation ☐ P&A ☐ Permanent Pit ☐ Below-grade Tank ☐ Closed-loop System
☐ Alternative
 Proposed Closure Method: ☐ Waste Excavation and Removal
☐ Waste Removal (Closed-loop systems only)
☐ On-site Closure Method (Only for temporary pits and closed-loop systems)
☐ In-place Burial ☐ On-site Trench Burial
☐ Alternative Closure Method (Exceptions must be submitted to the Santa Fe Environmental Bureau for consideration)

15.

Waste Excavation and Removal Closure Plan Checklist: (19.15.17.13 NMAC) **Instructions:** Each of the following items must be attached to the closure plan. Please indicate, by a check mark in the box, that the documents are attached.

- ☐ Protocols and Procedures - based upon the appropriate requirements of 19.15.17.13 NMAC
☐ Confirmation Sampling Plan (if applicable) - based upon the appropriate requirements of Subsection F of 19.15.17.13 NMAC
☐ Disposal Facility Name and Permit Number (for liquids, drilling fluids and drill cuttings)
☐ Soil Backfill and Cover Design Specifications - based upon the appropriate requirements of Subsection H of 19.15.17.13 NMAC
☐ Re-vegetation Plan - based upon the appropriate requirements of Subsection I of 19.15.17.13 NMAC
☐ Site Reclamation Plan - based upon the appropriate requirements of Subsection G of 19.15.17.13 NMAC

16.

Waste Removal Closure For Closed-loop Systems That Utilize Above Ground Steel Tanks or Haul-off Bins Only: (19.15.17.13.D NMAC)

Instructions: Please identify the facility or facilities for the disposal of liquids, drilling fluids and drill cuttings. Use attachment if more than two facilities are required.

Disposal Facility Name: _____ Disposal Facility Permit Number: _____

Disposal Facility Name: _____ Disposal Facility Permit Number: _____

Will any of the proposed closed-loop system operations and associated activities occur on or in areas that *will not* be used for future service and operations?

☐ Yes (If yes, please provide the information below) ☐ No

Required for impacted areas which will not be used for future service and operations:

☐ Soil Backfill and Cover Design Specifications - based upon the appropriate requirements of Subsection H of 19.15.17.13 NMAC

☐ Re-vegetation Plan - based upon the appropriate requirements of Subsection I of 19.15.17.13 NMAC

☐ Site Reclamation Plan - based upon the appropriate requirements of Subsection G of 19.15.17.13 NMAC

17.

Siting Criteria (regarding on-site closure methods only): 19.15.17.10 NMAC

Instructions: Each siting criteria requires a demonstration of compliance in the closure plan. Recommendations of acceptable source material are provided below. Requests regarding changes to certain siting criteria may require administrative approval from the appropriate district office or may be considered an exception which must be submitted to the Santa Fe Environmental Bureau office for consideration of approval. Justifications and/or demonstrations of equivalency are required. Please refer to 19.15.17.10 NMAC for guidance.

Ground water is less than 50 feet below the bottom of the buried waste. - NM Office of the State Engineer - iWATERS database search; USGS; Data obtained from nearby wells	<input type="checkbox"/> Yes <input type="checkbox"/> No <input type="checkbox"/> NA
Ground water is between 50 and 100 feet below the bottom of the buried waste - NM Office of the State Engineer - iWATERS database search; USGS; Data obtained from nearby wells	<input type="checkbox"/> Yes <input type="checkbox"/> No <input type="checkbox"/> NA
Ground water is more than 100 feet below the bottom of the buried waste. - NM Office of the State Engineer - iWATERS database search; USGS; Data obtained from nearby wells	<input type="checkbox"/> Yes <input type="checkbox"/> No <input type="checkbox"/> NA
Within 300 feet of a continuously flowing watercourse, or 200 feet of any other significant watercourse or lakebed, sinkhole, or playa lake (measured from the ordinary high-water mark). - Topographic map; Visual inspection (certification) of the proposed site	<input type="checkbox"/> Yes <input type="checkbox"/> No
Within 300 feet from a permanent residence, school, hospital, institution, or church in existence at the time of initial application. - Visual inspection (certification) of the proposed site; Aerial photo; Satellite image	<input type="checkbox"/> Yes <input type="checkbox"/> No
Within 500 horizontal feet of a private, domestic fresh water well or spring that less than five households use for domestic or stock watering purposes, or within 1000 horizontal feet of any other fresh water well or spring, in existence at the time of initial application. - NM Office of the State Engineer - iWATERS database; Visual inspection (certification) of the proposed site	<input type="checkbox"/> Yes <input type="checkbox"/> No
Within incorporated municipal boundaries or within a defined municipal fresh water well field covered under a municipal ordinance adopted pursuant to NMSA 1978, Section 3-27-3, as amended. - Written confirmation or verification from the municipality; Written approval obtained from the municipality	<input type="checkbox"/> Yes <input type="checkbox"/> No
Within 500 feet of a wetland. - US Fish and Wildlife Wetland Identification map; Topographic map; Visual inspection (certification) of the proposed site	<input type="checkbox"/> Yes <input type="checkbox"/> No
Within the area overlying a subsurface mine. - Written confirmation or verification or map from the NM EMNRD-Mining and Mineral Division	<input type="checkbox"/> Yes <input type="checkbox"/> No
Within an unstable area. - Engineering measures incorporated into the design; NM Bureau of Geology & Mineral Resources; USGS; NM Geological Society; Topographic map	<input type="checkbox"/> Yes <input type="checkbox"/> No
Within a 100-year floodplain. - FEMA map	<input type="checkbox"/> Yes <input type="checkbox"/> No

18.

On-Site Closure Plan Checklist: (19.15.17.13 NMAC) **Instructions:** Each of the following items must be attached to the closure plan. Please indicate, by a check mark in the box, that the documents are attached.

- ☐ Siting Criteria Compliance Demonstrations - based upon the appropriate requirements of 19.15.17.10 NMAC
- ☐ Proof of Surface Owner Notice - based upon the appropriate requirements of Subsection F of 19.15.17.13 NMAC
- ☐ Construction/Design Plan of Burial Trench (if applicable) based upon the appropriate requirements of 19.15.17.11 NMAC
- ☐ Construction/Design Plan of Temporary Pit (for in-place burial of a drying pad) - based upon the appropriate requirements of 19.15.17.11 NMAC
- ☐ Protocols and Procedures - based upon the appropriate requirements of 19.15.17.13 NMAC
- ☐ Confirmation Sampling Plan (if applicable) - based upon the appropriate requirements of Subsection F of 19.15.17.13 NMAC
- ☐ Waste Material Sampling Plan - based upon the appropriate requirements of Subsection F of 19.15.17.13 NMAC
- ☐ Disposal Facility Name and Permit Number (for liquids, drilling fluids and drill cuttings or in case on-site closure standards cannot be achieved)
- ☐ Soil Cover Design - based upon the appropriate requirements of Subsection H of 19.15.17.13 NMAC
- ☐ Re-vegetation Plan - based upon the appropriate requirements of Subsection I of 19.15.17.13 NMAC
- ☐ Site Reclamation Plan - based upon the appropriate requirements of Subsection G of 19.15.17.13 NMAC

19.

Operator Application Certification:

I hereby certify that the information submitted with this application is true, accurate and complete to the best of my knowledge and belief.

Name (Print): _____ Title: _____

Signature: _____ Date: _____

e-mail address: _____ Telephone: _____

20.

OCD Approval: ☐ Permit Application (including closure plan) ☒ Closure Plan (only) ☐ OCD Conditions (see attachment)

OCD Representative Signature: Jonathan D. Kelly Approval Date: 11/01/2011

Title: Compliance Officer OCD Permit Number: _____

21.

Closure Report (required within 60 days of closure completion): Subsection K of 19.15.17.13 NMAC

Instructions: Operators are required to obtain an approved closure plan prior to implementing any closure activities and submitting the closure report. The closure report is required to be submitted to the division within 60 days of the completion of the closure activities. Please do not complete this section of the form until an approved closure plan has been obtained and the closure activities have been completed.

☒ Closure Completion Date: 11/14/08

22.

Closure Method:

☐ Waste Excavation and Removal ☒ On-Site Closure Method ☐ Alternative Closure Method ☐ Waste Removal (Closed-loop systems only)
☐ If different from approved plan, please explain.

23.

Closure Report Regarding Waste Removal Closure For Closed-loop Systems That Utilize Above Ground Steel Tanks or Haul-off Bins Only:

Instructions: Please identify the facility or facilities for where the liquids, drilling fluids and drill cuttings were disposed. Use attachment if more than two facilities were utilized.

Disposal Facility Name: _____ Disposal Facility Permit Number: _____

Disposal Facility Name: _____ Disposal Facility Permit Number: _____

Were the closed-loop system operations and associated activities performed on or in areas that *will not* be used for future service and operations?

☐ Yes (If yes, please demonstrate compliance to the items below) ☐ No

Required for impacted areas which will not be used for future service and operations:

- ☐ Site Reclamation (Photo Documentation)
☐ Soil Backfilling and Cover Installation
☐ Re-vegetation Application Rates and Seeding Technique

24.

Closure Report Attachment Checklist: *Instructions: Each of the following items must be attached to the closure report. Please indicate, by a check mark in the box, that the documents are attached.*

- ☒ Proof of Closure Notice (surface owner and division)
☒ Proof of Deed Notice (required for on-site closure)
☒ Plot Plan (for on-site closures and temporary pits)
☐ Confirmation Sampling Analytical Results (if applicable)
☒ Waste Material Sampling Analytical Results (required for on-site closure)
☒ Disposal Facility Name and Permit Number
☒ Soil Backfilling and Cover Installation
☒ Re-vegetation Application Rates and Seeding Technique
☒ Site Reclamation (Photo Documentation)

On-site Closure Location: Latitude N36.86195 Longitude W-107.55837 NAD: ☐ 1927 ☒ 1983

25.

Operator Closure Certification:

I hereby certify that the information and attachments submitted with this closure report is true, accurate and complete to the best of my knowledge and belief. I also certify that the closure complies with all applicable closure requirements and conditions specified in the approved closure plan.

Name (Print): Mike Pippin Title: Petroleum Engineer

Signature: M. Pippin Date: June 22, 2009

e-mail address: mike@pippinllc.com Telephone: 505-327-4573

DEVON ENERGY
PIT CLOSURE NEBU #256H

Block #24, Box #4

The attached analytical data was taken by Blagg Engineering & analyzed by Envirotech Laboratories and passed all the State criteria.

Block #24, Box #6

All liquids were hauled to one of the following company disposal wells:

Middle Mesa SWD #2	SWD-441
Middle Mesa SWD #1	SWD-365
Simms Mesa SWD #1	SWD-339
Pump Mesa SWD #1	SWD-366

Block #24, Box #7

The liner was removed above "mud level" after stabilization. Pit contents were mixed with clean soil. After solidification and testing, the pit was backfilled with compacted, non-waste containing, soil. The pit was filled with clean excavated dirt and covered with 1 foot of top soil.

Block #24, Box #8

The area where the temporary drilling pit has been buried in place was seeded on 11/15/08 with 60 lbs of BLM seed mix for precipitation less than 10". The total acreage was 3 acres. The seed rate was 20 lbs PLS/acre for mechanical and 35 lbs PLS/acre for hand/broadcast and Harrow.

<div>Submit To Appropriate District Office Two Copies District I 1625 N. French Dr , Hobbs, NM 88240 District II 1301 W. Grand Avenue, Artesia, NM 88210 District III 1000 Rio Brazos Rd , Aztec, NM 87410 District IV 1220 S St Francis Dr., Santa Fe, NM 87505</div>		<div>State of New Mexico Energy, Minerals and Natural Resources Oil Conservation Division 1220 South St. Francis Dr. Santa Fe, NM 87505</div>		<div>Form C-105 July 17, 2008</div>						
		1. WELL API NO. 30-045-34685								
		2. Type of Lease <input type="checkbox"/> STATE <input type="checkbox"/> FEE <input checked="" type="checkbox"/> FED/INDIAN								
		3. State Oil & Gas Lease No								
WELL COMPLETION OR RECOMPLETION REPORT AND LOG										
4. Reason for filing: <input type="checkbox"/> COMPLETION REPORT (Fill in boxes #1 through #31 for State and Fee wells only) <input checked="" type="checkbox"/> C-144 CLOSURE ATTACHMENT (Fill in boxes #1 through #9, #15 Date Rig Released and #32 and/or #33; attach this and the plat to the C-144 closure report in accordance with 19.15.17.13.K NMAC)				5. Lease Name or Unit Agreement Name Northeast Blanco Unit						
				6. Well Number: 256H						
7. Type of Completion: <input checked="" type="checkbox"/> NEW WELL <input type="checkbox"/> WORKOVER <input type="checkbox"/> DEEPENING <input type="checkbox"/> PLUGBACK <input type="checkbox"/> DIFFERENT RESERVOIR <input type="checkbox"/> OTHER										
8 Name of Operator: Devon Energy Production Company, L.P.				9. OGRID: 06137						
10. Address of Operator:				11. Pool name or Wildcat:						
12.Location	Unit Ltr	Section	Township	Range	Lot	Feet from the	N/S Line	Feet from the	E/W Line	County
13. Date Spudded		14. Date T.D. Reached		15. Date Drilling Rig Released 9/25/08		16. Date Completed (Ready to Produce		17. Elevations (DF and RKB, RT, GR, etc.):		
18. Total Measured Depth of Well			19 Plug Back Measured Depth			20. Was Directional Survey Made?		21. Type Electric and Other Logs Run		
22 Producing Interval(s), of this completion - Top, Bottom, Name										
23. CASING RECORD (Report all strings set in well)										
CASING SIZE		WEIGHT LB./FT.		DEPTH SET		HOLE SIZE		CEMENTING RECORD		AMOUNT PULLED
24. LINER RECORD						25. TUBING RECORD				
SIZE	TOP		BOTTOM		SACKS CEMENT	SCREEN	SIZE	DEPTH SET		PACKER SET
26.						27. ACID, SHOT, FRACTURE, CEMENT, SQUEEZE, ETC.				
						DEPTH INTERVAL		AMOUNT AND KIND MATERIAL USED		
PRODUCTION										
Date First Production		Production Method (Flowing, gas lift, pumping - Size and type pump)				Well Status (Prod. or Shut-in)				
Date of Test	Hours Tested	Choke Size	Prod'n For	Oil - Bbl	Gas - MCF	Water - Bbl.	Gas - Oil Ratio			
Flow Tubing Press.	Casing Pressure	Calculated 24-Hour Rate	Oil - Bbl.	Gas - MCF	Water - Bbl.	Oil Gravity - API - (Corr.)				
29. Disposition of Gas (Sold, used for fuel, vented, etc.)						30. Test Witnessed By:				
31. List Attachments										
32. If a temporary pit was used at the well, attach a plat with the location of the temporary pit.										
33. If an on-site burial was used at the well, report the exact location of the on-site burial:										
Latitude 36.86195						Longitude -107.55837		NAD 1927 1983 <input checked="" type="checkbox"/>		
I hereby certify that the information shown on both sides of this form is true and complete to the best of my knowledge and belief										
Signature		Printed Name		Mike Pippin		Title: Petroleum Engineer		Date: 6/22/09		
E-mail Address: mike@pippinllc.com										

Castro, Melisa

From: Castro, Melisa
Sent: Friday, August 15, 2008 10:39 AM
To: BLM Land Notification
Subject: NEBU 256H Temproary Pit Closure Notification
Attachments: Pit Closure Plan.doc

Devon Energy Corporation
20 North Broadway
Oklahoma City, OK 73102-8260

405 552 7917 Phone
www.devonenergy.com

August 15, 2008

IN RE: NEBU 256H
API # 30-045-34685
NW NE 550' FEL & 2,565' FEL
Sec. 34, T31N, R7W
San Juan County, New Mexico

VIA EMAIL:

Dear Mr. Kelly,

This submittal is pursuant to Rule 19.15.17.13 requiring operators to notify the surface owners of an on-site burial of a temporary pit. Devon Energy Production Company, L.P. is herby providing written documentation of our intention to close the temporary pit associated with the aforementioned location by means of in place on-site burial.

Please feel free to contact me with any questions or require further information. My contact information is listed below.

Respectfully,

Melisa S. Castro
Devon Energy Production Company, L.P.
Senior Staff Operations Technician
405-323-3184 - Cell.
405-323-1357 - Fax
Melisa.Castro@devonenergy.com

8/15/2008

DEVON ENERGY PRODUCTION COMPANY, L.P.

NEBU # 256H

Survey Location of Reserve Pit On-Site Burial Marker.

Within the N½ of Sec.34, T31N, R7W, N.M.P.M.,
San Juan County, New Mexico

27 26
34 35

Existing Field Road

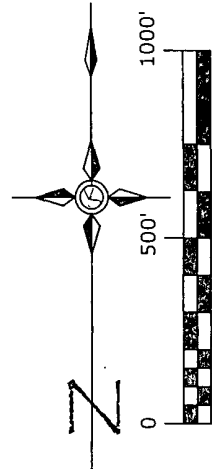
N½N½NE¼ Sec. 34
BLM

Existing Wellhead
NEBU # 256H
550' F/NL 2565' F/EL

DEVON ENERGY PROD CO. L.P.
NEBU # 256H

UNIT B SEC.34 T31N R7W NMPM
ON SITE BURIAL LOCATION

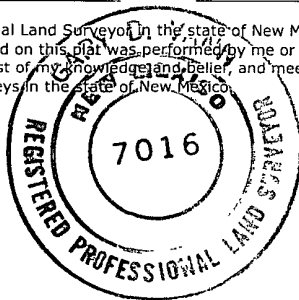
Lat: 36.86195°
Long: 107.55837° (83)



34

I, Gary D. Vann, a registered professional Land Surveyor in the state of New Mexico, hereby certify that the survey represented on this plat was performed by me or under my supervision, is true and correct to the best of my knowledge and belief, and meets the minimum standards for unclassified surveys in the state of New Mexico.

G. D. Vann
Gary D. Vann
Registered P.L.S. # 7016
State of New Mexico



State of New Mexico
County of San Juan

This instrument was acknowledged before me this 3 day of March, 2009 by Gary D. Vann.

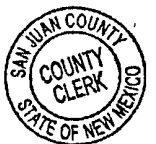


Lila Benfield
Notary Public
State of New Mexico
My Commission Expires 10-25-2010



200902966 03/03/2009 02:30 PM
1 of 1 B1489 P780 R \$9.00

San Juan County, NM DEBBIE HOLMES



LE

DEVON ENERGY
PRODUCTION COMPANY, L.P.

Date Surveyed: February 4, 2009	Revision Date:	Scale: 1" = 500'
------------------------------------	----------------	---------------------

Basis of Bearing: GPS Observations
Geodetic Bearing (True North)

VANN SURVEYS
P. O. Box 1306
Farmington, NM 87499

District I
1625 N. French Dr., Hobbs, NM 88240
District II
1301 W. Grand Avenue, Artesia, NM 88210
District III
1000 Rio Brazos Rd., Aztec, NM 87410
District IV
1220 S. St. Francis Dr., Santa Fe, NM 87505

State of New Mexico
Energy, Minerals & Natural Resources Department
OIL CONSERVATION DIVISION
1220 South St. Francis Dr.
Santa Fe, NM 87505

Form C-102
Revised October 12, 2005
Submit to Appropriate District Office
State Lease - 4 Copies
Fee Lease - 3 Copies

AS DRILLED

☐ AMENDED REPORT

WELL LOCATION AND ACREAGE DEDICATION PLAT

¹ API Number 30-045-34685	² Pool Code 80690	³ Pool Name So. Los Pinos Frt/Sand Pictured Cliffs
⁴ Property Code 19641	⁵ Property Name Northeast Blanco Unit	⁶ Well Number 256H
⁷ OGRID No. 06137	⁸ Operator Name Devon Energy Production Company, L.P.	⁹ Elevation 6344' GL

¹⁰ Surface Location

UL or lot no.	Section	Township	Range	Lot Idn	Feet from the	North/South line	Feet from the	East/West line	County
B	34	31-N	7-W		550'	NORTH	2565'	EAST	San Juan

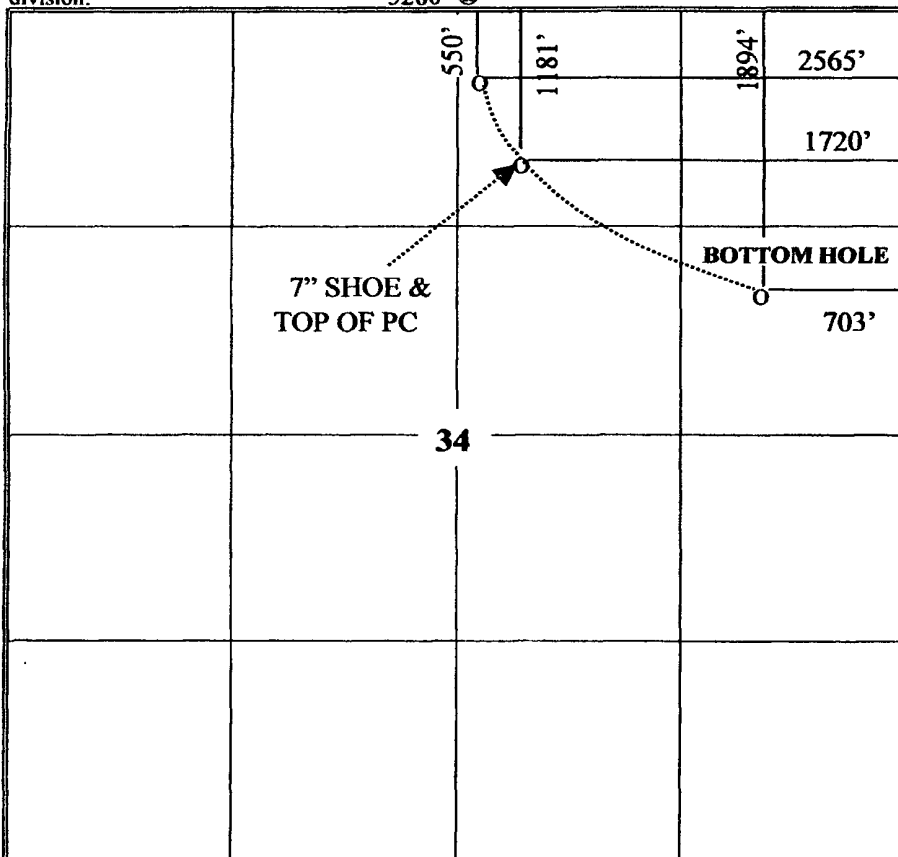
¹¹ Bottom Hole Location If Different From Surface

UL or lot no.	Section	Township	Range	Lot Idn	Feet from the	North/South line	Feet from the	East/West line	County
H	34	31-N	7-W		1894'	NORTH	703'	EAST	San Juan

¹² Dedicated Acres NE/4-160	¹³ Joint or Infill	¹⁴ Consolidation Code	¹⁵ Order No.
---	-------------------------------	----------------------------------	-------------------------

No allowable will be assigned to this completion until all interests have been consolidated or a non-standard unit has been approved by the division.

5280' @



¹⁷ OPERATOR CERTIFICATION

I hereby certify that the information contained herein is true and complete to the best of my knowledge and belief, and that this organization either owns a working interest or unleased mineral interest in the land including the proposed bottom hole location or has a right to drill this well at this location pursuant to a contract with an owner of such a mineral or working interest, or to a voluntary pooling agreement or a compulsory pooling order heretofore entered by the division.

Signature: Mike Pippin Date: 11/18/08

Mike Pippin
Printed Name

RCVD DEC 19 '08
OIL CONS. DIV.

¹⁸ SURVEYOR CERTIFICATION

I hereby certify that the well location shown on this plat was plotted from field notes of actual surveys made by me or under my supervision, and that the same is true and correct to the best of my belief.

4/14/04

Date of Survey

Signature and Seal of Professional Surveyor:

Gary D. Mann

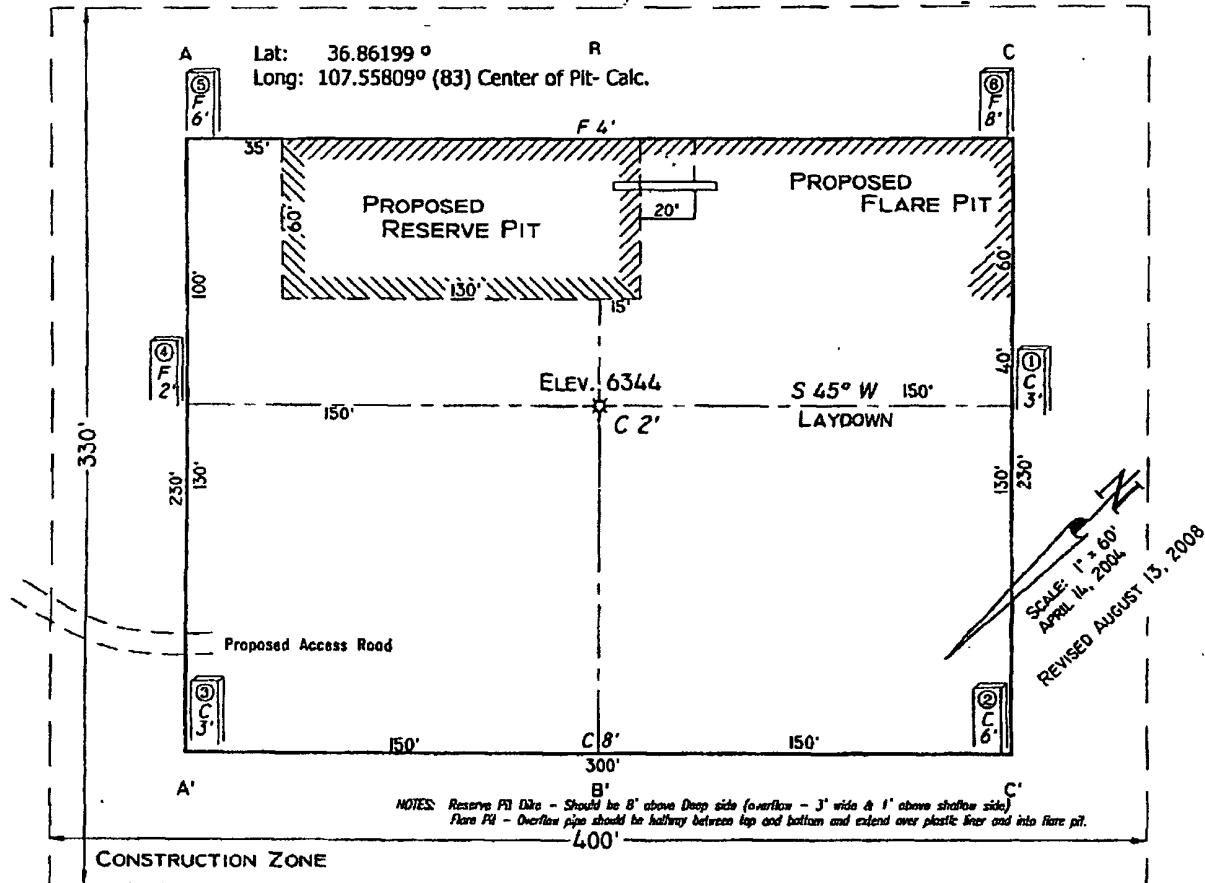
7016

Certificate Number

5280' (R)

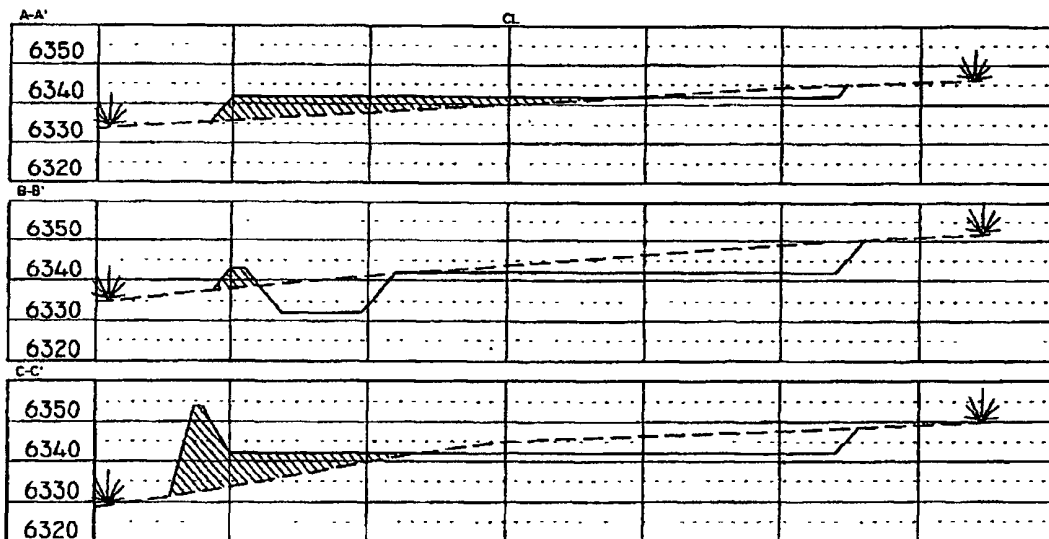
PAD LAYOUT PLAN & PROFILE
DEVON ENERGY PRODUCTION COMPANY, L.P.
NEBU # 256 H
 550'F/NL 2565' F/EL
 SEC. 34, T31N, R7W, NMPM
 SAN JUAN COUNTY, NEW MEXICO

Lat: 36.86174° (83)
 Long: 107.55806°



Area of Construction Zone - 330'x400' or 101 acres, more or less.

SCALE: 1"=60'-HORIZ.
 1"=60'-VERT.



VANN SURVEYS
 P. O. Box 1306
 Farmington, NM

08/14/2008 12:23PM (GMT-05:00)

CHAIN OF CUSTODY RECORD

5729

Client: BLAGG/DEVON		Project Name / Location: RESERVE PIT SAMPLING				ANALYSIS / PARAMETERS																																													
Client Address:		Sampler Name: J. Blagg				<table border="1"> <tr> <th>TPH (Method 8015)</th> <th>BTEX (Method 8021)</th> <th>VOC (Method 8260)</th> <th>RCRA 8 Metals</th> <th>Cation / Anion</th> <th>PCl</th> <th>TCLP with H/P</th> <th>PAH</th> <th>TPH (418.1)</th> <th>CHLORIDE</th> <th></th> <th></th> <th></th> <th></th> <th>Sample Cool</th> <th>Sample Intact</th> </tr> <tr> <td>X</td> <td>X</td> <td></td> <td></td> <td></td> <td></td> <td></td> <td></td> <td>X</td> <td>X</td> <td></td> <td></td> <td></td> <td></td> <td>✓</td> <td>✓</td> </tr> </table>														TPH (Method 8015)	BTEX (Method 8021)	VOC (Method 8260)	RCRA 8 Metals	Cation / Anion	PCl	TCLP with H/P	PAH	TPH (418.1)	CHLORIDE					Sample Cool	Sample Intact	X	X							X	X					✓	✓
TPH (Method 8015)	BTEX (Method 8021)	VOC (Method 8260)	RCRA 8 Metals	Cation / Anion	PCl															TCLP with H/P	PAH	TPH (418.1)	CHLORIDE					Sample Cool	Sample Intact																						
X	X							X	X					✓	✓																																				
Client Phone No.:		Client No.: 94034-010																																																	
Sample No./ Identification	Sample Date	Sample Time	Lab No.	Sample Matrix	No./Volume of Containers	Preservative HgCl ₂ HCl																																													
NEBU 251H 5-PC Comp	11/7/02	1030	48102	Soil Solid Sludge Aqueous	1-403				X	X						X	X									✓	✓																								
				Soil Solid Sludge Aqueous																																															
NEBU 255H 5-PC Comp	"	1145	48103	Soil Solid Sludge Aqueous	"				X	X						X	X									✓	✓																								
				Soil Solid Sludge Aqueous																																															
NEBU 256H 5-PC Comp	"	1315	48104	Soil Solid Sludge Aqueous	"				X	X						X	X									✓	✓																								
				Soil Solid Sludge Aqueous																																															
				Soil Solid Sludge Aqueous																																															
				Soil Solid Sludge Aqueous																																															
				Soil Solid Sludge Aqueous																																															
				Soil Solid Sludge Aqueous																																															
				Soil Solid Sludge Aqueous																																															
Relinquished by: (Signature) <i>Jeff Blagg</i>					Date 11/7/02	Time 1527	Received by: (Signature) <i>Christopher W. Welter</i>					Date 11/11/02	Time 1527																																						
Relinquished by: (Signature)							Received by: (Signature)																																												
Relinquished by: (Signature)							Received by: (Signature)																																												

ENVIROTECH INC.

5796 U.S. Highway 64 • Farmington, NM 87401 • Tel 505-632-0615

Client:	Blagg/Devon	Project #:	94034-0010
Sample ID:	NEBU 256H 5-pt Comp	Date Reported:	11-17-08
Laboratory Number:	48104	Date Sampled:	11-07-08
Chain of Custody:	5729	Date Received:	11-11-08
Sample Matrix:	Soil	Date Analyzed:	11-13-08
Preservative:	Cool	Date Extracted:	11-12-08
Condition:	Intact	Analysis Requested:	BTEX

Parameter	Concentration (ug/Kg)	Det. Limit (ug/Kg)
Benzene	ND	0.9
Toluene	8.5	1.0
Ethylbenzene	5.2	1.0
p,m-Xylene	67.2	1.2
o-Xylene	30.6	0.9
Total BTEX	112	

ND - Parameter not detected at the stated detection limit.

Surrogate Recoveries:	Parameter	Percent Recovery
	Fluorobenzene	97.0 %
	1,4-difluorobenzene	97.0 %
	Bromochlorobenzene	97.0 %

References: Method 5030B, Purge-and-Trap, Test Methods for Evaluating Solid Waste, SW-846, USEPA, December 1996.

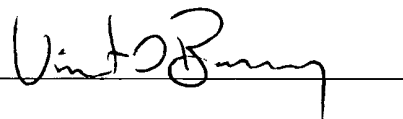
Method 8021B, Aromatic Volatile Organics, Test Methods for Evaluating Solid Waste, SW-846, USEPA, December 1996.

Comments: Reserve Pit Sampling

Analyst



Review



Client:	Blagg/Devon	Project #:	94034-0010
Sample ID:	NEBU 256H 5-pt Comp	Date Reported:	11-17-08
Laboratory Number:	48104	Date Sampled:	11-07-08
Chain of Custody No:	5729	Date Received:	11-11-08
Sample Matrix:	Soil	Date Extracted:	11-12-08
Preservative:	Cool	Date Analyzed:	11-13-08
Condition:	Intact	Analysis Requested:	8015 TPH

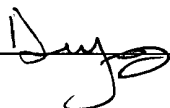
Parameter	Concentration (mg/Kg)	Det. Limit (mg/Kg)
Gasoline Range (C5 - C10)	1.4	0.2
Diesel Range (C10 - C28)	414	0.1
Total Petroleum Hydrocarbons	415	0.2

ND - Parameter not detected at the stated detection limit.

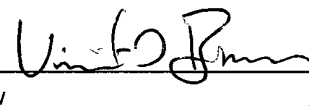
References: Method 8015B, Nonhalogenated Volatile Organics, Test Methods for Evaluating Solid Waste, SW-846, USEPA, December 1996

Comments: **Reserve Pit Sampling**

Analyst



Review



Client:	Blagg/Devon	Project #:	94034-0010
Sample ID:	NEBU 256H 5-pt Comp	Date Reported:	11-14-08
Laboratory Number:	48104	Date Sampled:	11-07-08
Chain of Custody No:	5729	Date Received:	11-11-08
Sample Matrix:	Soil	Date Extracted:	11-12-08
Preservative:	Cool	Date Analyzed:	11-12-08
Condition:	Intact	Analysis Needed:	TPH-418.1

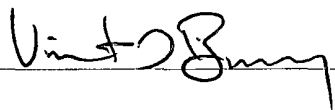
Parameter	Concentration (mg/kg)	Det. Limit (mg/kg)
Total Petroleum Hydrocarbons	534	5.0

ND = Parameter not detected at the stated detection limit.

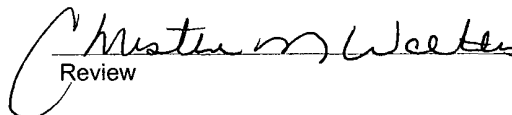
References: Method 418.1, Petroleum Hydrocarbons, Total Recoverable, Chemical Analysis of Water and Waste, USEPA Storet No. 4551, 1978.

Comments: **Reserve Pit Sampling.**

Analyst



Review

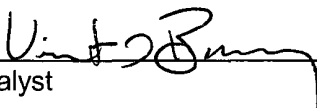


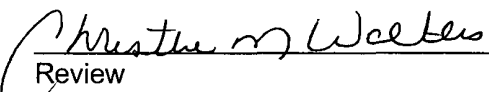
Client:	Blagg/Devon	Project #:	94034-0010
Sample ID:	NEBU 256H 5-pt Comp	Date Reported:	11-14-08
Lab ID#:	48104	Date Sampled:	11-07-08
Sample Matrix:	Soil	Date Received:	11-11-08
Preservative:	Cool	Date Analyzed:	11-13-08
Condition:	Intact	Chain of Custody:	5729

Parameter	Concentration (mg/Kg)
Total Chloride	405

Reference: U.S.E.P.A., 4500B, "Methods for Chemical Analysis of Water and Wastes", 1983.
Standard Methods For The Examination of Water And Waste Water", 18th ed., 1992.

Comments: **Reserve Pit Sampling.**


Analyst


Review

Client:	N/A	Project #:	N/A
Sample ID:	11-13-BT QA/QC	Date Reported:	11-17-08
Laboratory Number:	48066	Date Sampled:	N/A
Sample Matrix:	Soil	Date Received:	N/A
Preservative:	N/A	Date Analyzed:	11-13-08
Condition:	N/A	Analysis:	BTEX

Calibration and Detection Limits (ug/L)	I-Cal RF	C-Cal RF	%Diff	Blank Conc	Detect Limit
		Accept Range 0 - 15%			
Benzene	4.5983E+007	4.6075E+007	0.2%	ND	0.1
Toluene	3.6221E+007	3.6294E+007	0.2%	ND	0.1
Ethylbenzene	2.7170E+007	2.7225E+007	0.2%	ND	0.1
p,m-Xylene	5.8434E+007	5.8551E+007	0.2%	ND	0.1
o-Xylene	2.6565E+007	2.6618E+007	0.2%	ND	0.1

Duplicate Conc. (ug/Kg)	Sample	Duplicate	%Diff	Accept Range	Detect Limit
Benzene	1.0	1.1	10.0%	0 - 30%	0.9
Toluene	4.4	4.5	2.3%	0 - 30%	1.0
Ethylbenzene	2.0	1.9	5.0%	0 - 30%	1.0
p,m-Xylene	4.2	4.0	4.8%	0 - 30%	1.2
o-Xylene	2.8	3.0	7.1%	0 - 30%	0.9

Spike Conc. (ug/Kg)	Sample	Amount Spiked	Spiked Sample	% Recovery	Accept Range
Benzene	1.0	50.0	50.0	98.0%	39 - 150
Toluene	4.4	50.0	52.1	95.8%	46 - 148
Ethylbenzene	2.0	50.0	50.0	96.2%	32 - 160
p,m-Xylene	4.2	100	101	97.0%	46 - 148
o-Xylene	2.8	50.0	49.8	94.3%	46 - 148

ND - Parameter not detected at the stated detection limit.

References: Method 5030B, Purge-and-Trap, Test Methods for Evaluating Solid Waste, SW-846, USEPA, December 1996.
Method 8021B, Aromatic and Halogenated Volatiles by Gas Chromatography Using Photoionization and/or Electrolytic Conductivity Detectors, SW-846, USEPA December 1996.

Comments: QA/QC for Samples 48066 - 48069, 48097 - 48099, and 48102 - 48104.

Analyst

Review

Quality Assurance Report

Client:	QA/QC	Project #:	N/A
Sample ID:	11-13-08 QA/QC	Date Reported:	11-17-08
Laboratory Number:	48066	Date Sampled:	N/A
Sample Matrix:	Methylene Chloride	Date Received:	N/A
Preservative:	N/A	Date Analyzed:	11-13-08
Condition:	N/A	Analysis Requested:	TPH

	I-Cal Date	I-Cal RF	C-Cal RF	% Difference	Accept Range
Gasoline Range C5 - C10	05-07-07	1.0082E+003	1.0086E+003	0.04%	0 - 15%
Diesel Range C10 - C28	05-07-07	9.9575E+002	9.9615E+002	0.04%	0 - 15%

Blank Conc. (mg/L - mg/Kg)	Concentration	Detection Limit
Gasoline Range C5 - C10	ND	0.2
Diesel Range C10 - C28	ND	0.1
Total Petroleum Hydrocarbons	ND	0.2

Duplicate Conc. (mg/Kg)	Sample	Duplicate	% Difference	Accept Range
Gasoline Range C5 - C10	ND	ND	0.0%	0 - 30%
Diesel Range C10 - C28	ND	ND	0.0%	0 - 30%

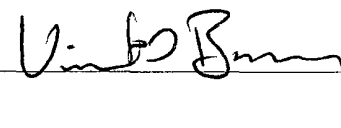
Spike Conc. (mg/Kg)	Sample	Spike Added	Spike Result	% Recovery	Accept Range
Gasoline Range C5 - C10	ND	250	252	101%	75 - 125%
Diesel Range C10 - C28	ND	250	247	98.8%	75 - 125%

ND - Parameter not detected at the stated detection limit.

References: Method 8015B, Nonhalogenated Volatile Organics, Test Methods for Evaluating Solid Waste, SW-846, USEPA, December 1996.

Comments: QA/QC for Sample 48066 - 48069, 48098, and 48102 - 48105.

Analyst 

Review 

Client:	QA/QC	Project #:	N/A
Sample ID:	QA/QC	Date Reported:	11-14-08
Laboratory Number:	11-12-TPH.QA/QC 48102	Date Sampled:	N/A
Sample Matrix:	Freon-113	Date Analyzed:	11-07-08
Preservative:	N/A	Date Extracted:	11-11-08
Condition:	N/A	Analysis Needed:	TPH

Calibration	I-Cal Date	C-Cal Date	I-Cal RF	C-Cal RF	% Difference	Accept Range
	11-03-08	11-07-08	1,420	1,520	7.0%	+/- 10%

Blank Conc. (mg/Kg)	Concentration	Detection Limit
TPH	ND	9.1

Duplicate Conc. (mg/Kg)	Sample	Duplicate	% Difference	Accept Range
TPH	73.9	86.4	16.9%	+/- 30%

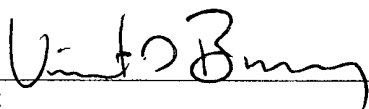
Spike Conc. (mg/Kg)	Sample	Spike Added	Spike Result	% Recovery	Accept Range
TPH	73.9	2,000	1,820	87.8%	80 - 120%

ND = Parameter not detected at the stated detection limit.

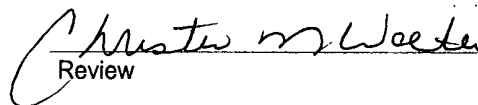
References: Method 418.1, Petroleum Hydrocarbons, Total Recoverable, Chemical Analysis of Water and Waste, USEPA Storet No. 4551, 1978.

Comments: QA/QC for Samples 48102 - 48104.

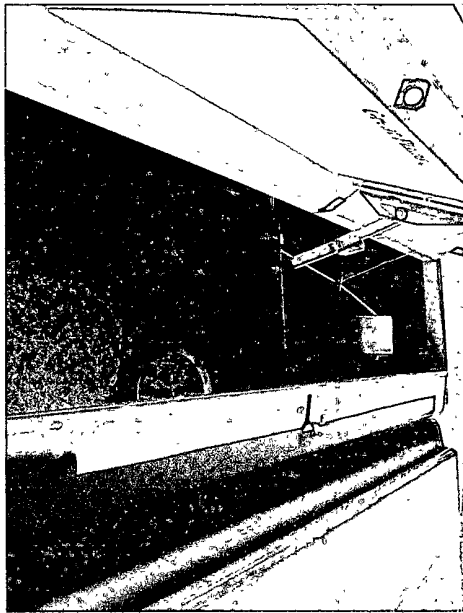
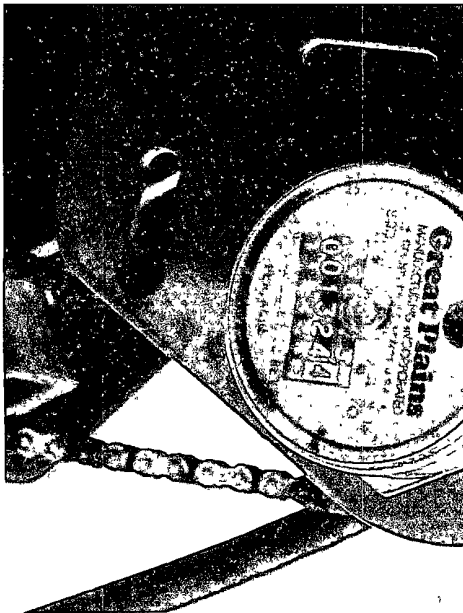
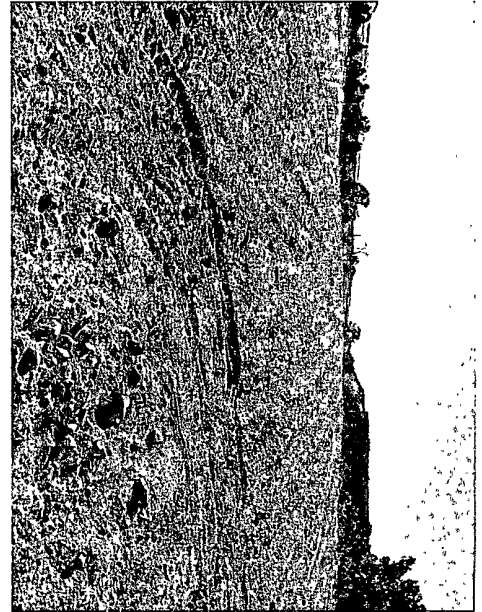
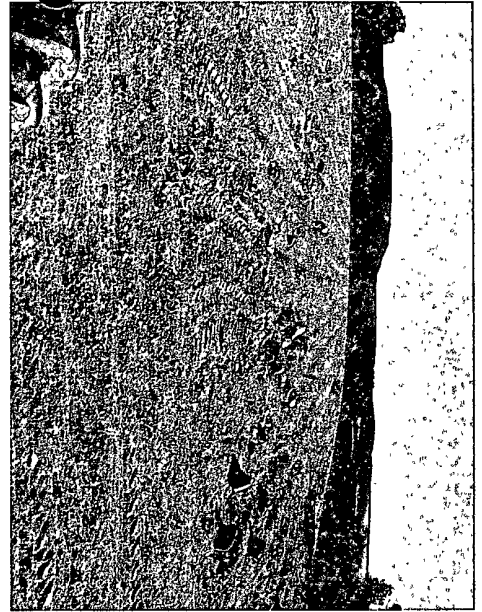
Analyst

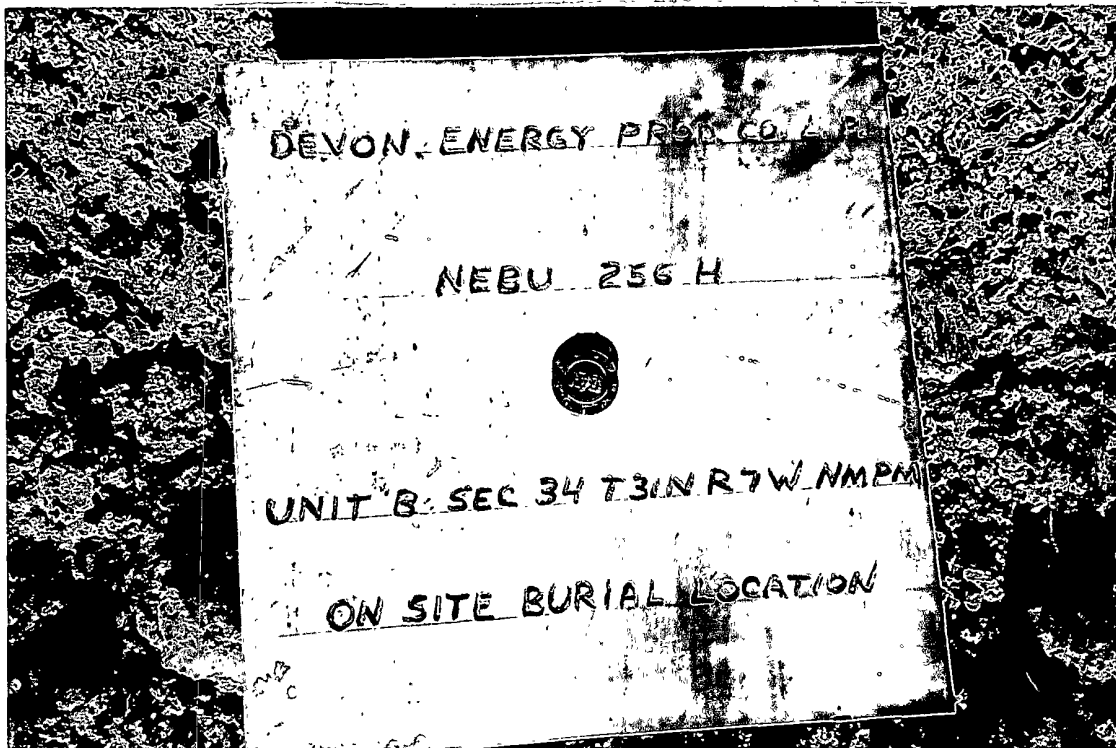


Review



ST Seeding and Tractor P.O. Box 551 Bloomfield, NM 87413 Ph: 505.793.0364





DEVON ENERGY PRODUCTION COMPANY, L.P.

Mike Pippin

3104 N. Sullivan Avenue

Farmington, NM 87401

505-327-4573 (phone) mike@pippinllc.com

October 27, 2011

NMOCD

c/o Jonathan Kelly

1000 Rio Brazos Rd.

Aztec, NM 87410

RE: Pit Closure Packages from 2008 and 2009, Form C-144
Northeast Blanco Unit

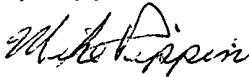
Dear Mr. Kelly,

I have reviewed the list of Northeast Blanco Unit wells you sent me on 10/26/11. As you indicated, many of the pit closure packages from 2008 and 2009 on these wells did not include proof that notice was given to the NMOCD within one week of the drilling pit closure, nor did they include proof of the pit inspections. Although we believe that both the notices and the pit inspections occurred, this was an oversight that the proof was not included in the pit closure packages. Unfortunately, this data is no longer available.

In the future, Devon will include proof of drilling pit closure notice and pit inspection logs in all drilling pit closure packages.

Please contact me at 505-327-4573 should you have any questions.

Very truly yours,



Mike Pippin PE
Petroleum Engineer

SOUD OCT 31 '11

OIL CONS. DIV.

DIST. 2