

RECEIVED

Form 3160-5
(February 2005)UNITED STATES
DEPARTMENT OF THE INTERIOR
BUREAU OF LAND MANAGEMENT

SEP 06 2011

Farmington Field Office
Bureau of Land ManagementFORM APPROVED
OMB No. 1004-0137
Expires: March 31, 2007**SUNDRY NOTICES AND REPORTS ON WELLS**
Do not use this form for proposals to drill or to re-enter an abandoned well. Use Form 3160-3 (APD) for such proposals.**SUBMIT IN TRIPLICATE – Other instructions on page 2.**

1 Type of Well

☐ Oil Well ☒ Gas Well ☐ Other5 Lease Serial No.
NM-03189

6. If Indian, Allottee or Tribe Name

7. If Unit of CA/Agreement, Name and/or No.
Cox Canyon8. Well Name and No.
Cox Canyon #149. API Well No.
30-045-2149010 Field and Pool or Exploratory Area
Pictured Cliffs11. Country or Parish, State
San Juan, NM

2 Name of Operator

Williams Production Company, LLC

3a Address

PO Box 640 Aztec, NM 87410

3b. Phone No. (include area code)

505-634-4206

4. Location of Well (Footage, Sec., T., R., M., or Survey Description)

1425' FSL and 1740' FWL NE/4 SW/4 Sec 21(K), T32N, R11W

12. CHECK THE APPROPRIATE BOX(ES) TO INDICATE NATURE OF NOTICE, REPORT OR OTHER DATA

TYPE OF SUBMISSION	TYPE OF ACTION			
<input type="checkbox"/> Notice of Intent	<input type="checkbox"/> Acidize	<input type="checkbox"/> Deepen	<input type="checkbox"/> Production (Start/Resume)	<input type="checkbox"/> Water Shut-Off
<input checked="" type="checkbox"/> Subsequent Report	<input type="checkbox"/> Alter Casing	<input type="checkbox"/> Fracture Treat	<input type="checkbox"/> Reclamation	<input type="checkbox"/> Well Integrity
<input type="checkbox"/> Final Abandonment Notice	<input type="checkbox"/> Casing Repair	<input type="checkbox"/> New Construction	<input type="checkbox"/> Recomplete	<input type="checkbox"/> Other _____
	<input type="checkbox"/> Change Plans	<input checked="" type="checkbox"/> Plug and Abandon	<input type="checkbox"/> Temporarily Abandon	
	<input type="checkbox"/> Convert to Injection	<input type="checkbox"/> Plug Back	<input type="checkbox"/> Water Disposal	

13. Describe Proposed or Completed Operation: Clearly state all pertinent details, including estimated starting date of any proposed work and approximate duration thereof. If the proposal is to deepen directionally or recomplate horizontally, give subsurface locations and measured and true vertical depths of all pertinent markers and zones. Attach the Bond under which the work will be performed or provide the Bond No. on file with BLM/BIA. Required subsequent reports must be filed within 30 days following completion of the involved operations. If the operation results in a multiple completion or recomplate in a new interval, a Form 3160-4 must be filed once testing has been completed. Final Abandonment Notices must be filed only after all requirements, including reclamation, have been completed and the operator has determined that the site is ready for final inspection.)

Williams Production plugged and abandoned the Cox Canyon #14 per attached Plug and Abandonment Report and WBD.

RCVD SEP 9 '11
OIL CONS. DIV.

DIST. 3

File amended report for tag for plug #1

14 I hereby certify that the foregoing is true and correct

Name (Printed/Typed)

Ben Mitchell

Title Regulatory Specialist

Signature

Date 9/1/2011

THIS SPACE FOR FEDERAL OR STATE OFFICE USE

Approved by

Title

Date

Conditions of approval, if any, are attached. Approval of this notice does not warrant or certify that the applicant holds legal or equitable title to those rights in the subject lease which would entitle the applicant to conduct operations thereon.

Office

Title 18 U.S.C. Section 1001 and Title 43 U.S.C. Section 1212, make it a crime for any person knowingly and willfully to make to any department or agency of the United States any false, fictitious or fraudulent statements or representations as to any matter within its jurisdiction

(Instructions on page 2)

ACCEPTED FOR RECORD

SEP 07 2011

NMOC

FARMINGTON FIELD OFFICE

A-PLUS WELL SERVICE, INC.

P.O. BOX 1979
Farmington, New Mexico 87499
505-325-2627 * fax: 505-325-1211

Williams Production Company, LLC
Cox Canyon #14

August 10, 2011
Page 1 of 2

1450' FSL & 1740' FWL, Section 21, T-32-N, R-11-W
San Juan County, NM
Lease Number: NM-03189
API #30-045-21490

Plug and Abandonment Report

Notified NMOCD and BLM on 8/02/11

Plug and Abandonment Summary:

- 8/03/11 Rode equipment to location. LO/TO meter run. Check well pressures: tubing 20 PSI and casing 12 PSI. MOL and RU. Build berm along east side of location with shovels as decided in SPCC discussion. Blow well down to pit. ND wellhead. Strip on and NU BOP; test. TOH and tally 108 joints 1-1/4" IJ tubing, 3613'. SI well. SDFD.
- 8/04/11 Open up well and blow down 20 PSI casing pressure. Procedure change approved by Jamie Joe, BLM. Round trip 2.25 gauge ring to 3525'. PU and RIW with 2-7/8" PlugWell CIBP; set at 3516'. Load casing with 17 bbls of water and circulate well clean with additional 20 bbls of water. Attempt to pressure test casing, leak 1 bpm at 450 PSI.
Plug #1 with CIBP at 3516', spot 14 sxs Class B cement (16.52 cf) inside casing above BP to 3008' to cover the Pictured Cliffs and Fruitland intervals.
TOH with tubing. SI well and AWOC. TIH and tag cement at 3095'. PU to 3067'. Establish circulation out casing with 4 bbls of water. Attempt to circulate hole clean with 22 bbls of water. Circulate 3/4 bbls of wet cement to pit. TIH with tubing to 3000'. SI well. SDFD.
- 8/05/11 Open up well; tubing and casing on a vacuum. TIH and tag cement at 3168'. TOH with tubing. ND BOP. ND casing head. PU on 2-7/8" casing pulling 40K; tubing hanger had no movement. Tie rig to pull on one line. PU on casing and unseat tubing hanger. PU as much as 70K, unable to pull tubing hanger above casing head. Calculate 2-7/8" casing stuck at 235'. S. Mason and J. Joe, BLM, approved procedure change. NU casing. NU BOP. Load casing with 4.5 bbls of water. Establish rate 1 bpm at 450 PSI. Perforate 3 squeeze holes at 1982'. RIH with 2-7/8" PlugWell CR; set at 1954'. RIH with tubing and sting into CR. Establish rate 1.5 bpm at 700 PSI.
Plug #2 with CR at 1954, mix and pump 94 sxs Class B cement (110.92 cf), squeeze 86 sxs below CR and leave 8 sxs above CR to 1667' to cover the Kirtland and Ojo Alamo tops. TOH and LD tubing with stinger. SI well. SDFD.
- 8/08/11 Open up well; no pressure. TIH and tag cement at 1528'. Load casing with 3.5 bbls of water. Attempt to pressure test casing; leak 1/2 bpm at 450 PSI. TOH with tubing. Perforate 3 squeeze holes 608'. Establish rate into squeeze holes 1/2 bpm at 450 PSI. RIH with 2-7/8" PlugWell CR and set at 584'. Establish rate into squeeze holes 1 bpm at 700 PSI.
Plug #3 with CR at 584', mix and pump 32 sxs Class B cement (37.76 cf) with 2% CaCl₂, squeeze 27 sxs below CR and leave 5 sxs above to 403' to cover the Nacimiento top. TOH and LD tubing. SI well and WOC. RIH and tag cement at 430'. Perforate 3 squeeze holes at 204'. Establish rate 3 bpm at 300 PSI. Pump additional 15 bbls of water to establish circulation out bradenhead valve.

A-PLUS WELL SERVICE, INC.

P.O. BOX 1979

Farmington, New Mexico 87499

505-325-2627 * fax: 505-325-1211

Williams Production Company, LLC
Cox Canyon #14

August 10, 2011
Page 2 of 2

Plug and Abandonment Summary Cont'd:

Plug #4 mix and pump 68 sxs Class B cement (80.24 cf) down 2-7/8" casing from 204' to surface, circulate good cement out bradenhead valve.
SI well and WOC. SDFD.

8/09/11 Open up well; no pressure. TIH and tag cement at 150'.
Plug #4a mix and pump 10 sxs Class B cement (11.8 cf) from 150' to surface, circulate good cement out casing valve.
TOH and LD tubing. ND BOP. Dig out wellhead. Monitor Atmosphere. Issue Hot Work Permit. Cut off wellhead. Found cement at surface.
Plug #5 spot 17 sxs Class B cement (20.06 cf) to top off casing and annulus, then install P&A marker. Remove LO/TO. RD and MOL.

Jamie Joe, BLM representative, was on location.

COX CANYON UNIT #14 PICTURED CLIFFS

Spud Date 06/10/74
Completed 07/11/74
1st Delivery 12/03/74
P&Aed 8/9/2011

Location:

1425' FSL and 1740' FWL
NE/4 SW/4 Sec 21(K), T32N, R11W
San Juan, New Mexico
Elevation: 6866' GR
API # 30-045-21490

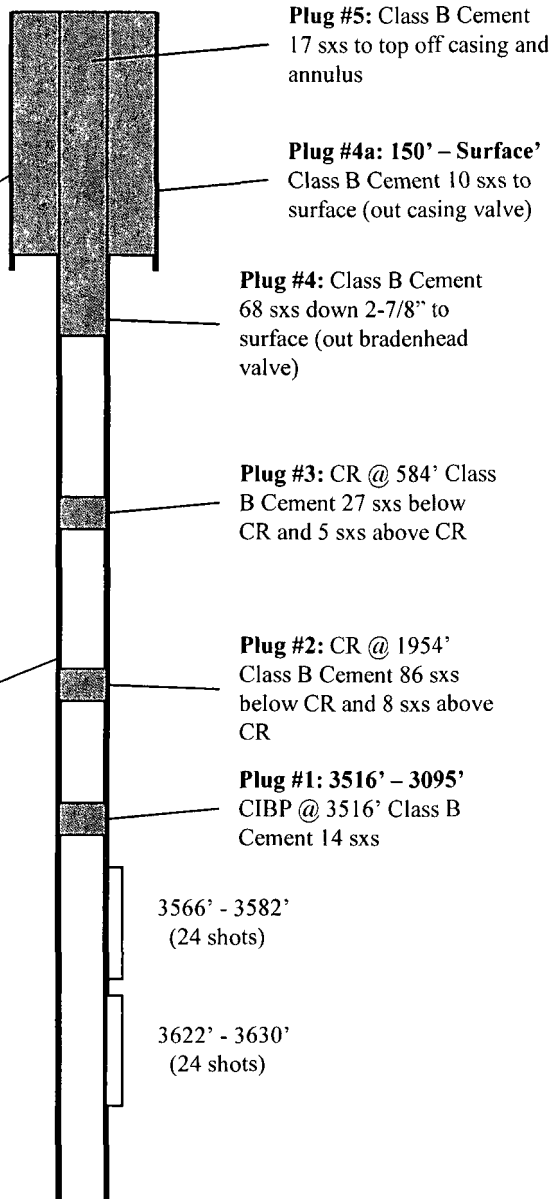
3 jts 8-5/8", 24#, J-55 csg @ 152'

Top	Depth
Ojo Alamo	2460'
Kirtland	2700'
Fruitland	3340'
Pictured Cliffs	3558'

133 jts of 2-7/8", 6.4#, H-40 & J-55 production
csg @ 3712'

Stimulated 07/11/74

250 gal 15% HCl. Fraced w/
30,000# 10/20 sand and 29,200 gal
water.



PBSD @ 3706'
TD @ 3712'

Hole Size	Casing	Cement	Top of Cmt
12-3/4"	8-5/8", 24#	100 sx	Surface
6-1/2"	2-7/8", 6.4#	175 sx	3550'