

## District I

1625 N French Dr, Hobbs, NM 88240

## District II

1301 W Grand Ave, Artesia, NM 88210

## District III

1000 Rio Brazos Rd, Aztec, NM 87410

## District IV

1220 S St Francis Dr, Santa Fe, NM 87505

State of New Mexico  
Energy Minerals and Natural ResourcesDepartment  
Oil Conservation Division  
1220 South St. Francis Dr.  
Santa Fe, NM 87505

Form C-144

July 21, 2008

For temporary pits, closed-loop systems, and below-grade tanks, submit to the appropriate NMOCD District Office

For permanent pits and exceptions submit to the Santa Fe Environmental Bureau office and provide a copy to the appropriate NMOCD District Office

Pit, Closed-Loop System, Below-Grade Tank, or  
Proposed Alternative Method Permit or Closure Plan Application

- Type of action:
- ☐ Permit of a pit, closed-loop system, below-grade tank, or proposed alternative method
- ☒ Closure of a pit, closed-loop system, below-grade tank, or proposed alternative method
- ☐ Modification to an existing permit
- ☐ Closure plan only submitted for an existing permitted or non-permitted pit, closed-loop system, below-grade tank, or proposed alternative method

RCVD NOV 29 '11

OIL CONS. DIV.

DIST. 3

**Instructions: Please submit one application (Form C-144) per individual pit, closed-loop system, below-grade tank or alternative request**

Please be advised that approval of this request does not relieve the operator of liability should operations result in pollution of surface water, ground water or the environment. Nor does approval relieve the operator of its responsibility to comply with any other applicable governmental authority's rules, regulations or ordinances.

1

Operator: **Burlington Resources Oil & Gas Company, LP** OGRID#: **14538**

Address: **P.O. Box 4289, Farmington, NM 87499**

Facility or well name: **SAN JUAN 29-7 UNIT 84B**

API Number: **30-039-30868** OCD Permit Number: \_\_\_\_\_

U/L or Qtr/Qtr: **A(NE/NE)** Section: **1** Township: **29N** Range: **7W** County: **Rio Arriba**

Center of Proposed Design: Latitude: **36.759072** °N Longitude: **107.516866** °W NAD: ☐ 1927 ☒ 1983

Surface Owner: ☒ Federal ☐ State ☐ Private ☐ Tribal Trust or Indian Allotment

2

☒ **Pit:** Subsection F or G of 19.15.17.11 NMAC

Temporary: ☒ Drilling ☐ Workover

☐ Permanent ☐ Emergency ☐ Cavitation ☐ P&A

☒ Lined ☐ Unlined Liner type: Thickness **20** mil ☒ LLDPE ☐ HDPE ☐ PVC ☐ Other \_\_\_\_\_

☒ String-Reinforced

Liner Seams: ☒ Welded ☒ Factory ☐ Other \_\_\_\_\_ Volume: **7700** bbl Dimensions L **120'** x W **55'** x D **12'**

3

☐ **Closed-loop System:** Subsection H of 19.15.17.11 NMAC

Type of Operation: ☐ P&A ☐ Drilling a new well ☐ Workover or Drilling (Applies to activities which require prior approval of a permit or notice of intent)

☐ Drying Pad ☐ Above Ground Steel Tanks ☐ Haul-off Bins ☐ Other \_\_\_\_\_

☐ Lined ☐ Unlined Liner type: Thickness \_\_\_\_\_ mil ☐ LLDPE ☐ HDPE ☐ PVD ☐ Other \_\_\_\_\_

Liner Seams: ☐ Welded ☐ Factory ☐ Other \_\_\_\_\_

4

☐ **Below-grade tank:** Subsection I of 19.15.17.11 NMAC

Volume: \_\_\_\_\_ bbl Type of fluid: \_\_\_\_\_

Tank Construction material: \_\_\_\_\_

☐ Secondary containment with leak detection ☐ Visible sidewalls, liner, 6-inch lift and automatic overflow shut-off

☐ Visible sidewalls and liner ☐ Visible sidewalls only ☐ Other \_\_\_\_\_

Liner Type: Thickness \_\_\_\_\_ mil ☐ HDPE ☐ PVC ☐ Other \_\_\_\_\_

5

☐ **Alternative Method:**

Submittal of an exception request is required. Exceptions must be submitted to the Santa Fe Environmental Bureau office for consideration of approval

6

**Fencing:** Subsection D of 19.15.17.11 NMAC (*Applies to permanent pit, temporary pits, and below-grade tanks*)

- ☐ Chain link, six feet in height, two strands of barbed wire at top (*Required if located within 1000 feet of a permanent residence, school, hospital, institution or church*)
- ☐ Four foot height, four strands of barbed wire evenly spaced between one and four feet
- ☐ Alternate. Please specify \_\_\_\_\_

7

**Netting:** Subsection E of 19.15.17.11 NMAC (*Applies to permanent pits and permanent open top tanks*)

- ☐ Screen ☐ Netting ☐ Other \_\_\_\_\_
- ☐ Monthly inspections (*If netting or screening is not physically feasible*)

8

**Signs:** Subsection C of 19.15.17.11 NMAC

- ☐ 12" X 24", 2" lettering, providing Operator's name, site location, and emergency telephone numbers
- ☒ Signed in compliance with 19.15.3.103 NMAC

9

**Administrative Approvals and Exceptions:**

Justifications and/or demonstrations of equivalency are required. Please refer to 19.15.17 NMAC for guidance.

*Please check a box if one or more of the following is requested, if not leave blank:*

- ☐ Administrative approval(s): Requests must be submitted to the appropriate division district of the Santa Fe Environmental Bureau office for consideration of approval. (Fencing/BGT Liner)
- ☐ Exception(s): Requests must be submitted to the Santa Fe Environmental Bureau office for consideration of approval.

10

**Siting Criteria (regarding permitting) 19.15.17.10 NMAC**

*Instructions: The applicant must demonstrate compliance for each siting criteria below in the application. Recommendations of acceptable source material are provided below. Requests regarding changes to certain siting criteria may require administrative approval from the appropriate district office or may be considered an exception which must be submitted to the Santa Fe Environmental Bureau Office for consideration of approval. Applicant must attach justification for request. Please refer to 19.15.17.10 NMAC for guidance. Siting criteria does not apply to drying pads or above grade-tanks associated with a closed-loop system.*

**Ground water is less than 50 feet below the bottom of the temporary pit, permanent pit, or below-grade tank.**

- NM Office of the State Engineer - iWATERS database search; USGS; Data obtained from nearby wells

☐ Yes ☐ No

**Within 300 feet of a continuously flowing watercourse, or 200 feet of any other watercourse, lakebed, sinkhole, or playa lake (measured from the ordinary high-water mark).**

- Topographic map; Visual inspection (certification) of the proposed site

☐ Yes ☐ No

**Within 300 feet from a permanent residence, school, hospital, institution, or church in existence at the time of initial application.**

(*Applies to temporary, emergency, or cavitation pits and below-grade tanks*)

- Visual inspection (certification) of the proposed site; Aerial photo; Satellite image

☐ Yes ☐ No

☐ NA

**Within 1000 feet from a permanent residence, school, hospital, institution, or church in existence at the time of initial application.**

(*Applied to permanent pits*)

- Visual inspection (certification) of the proposed site; Aerial photo; Satellite image

☐ Yes ☐ No

☐ NA

**Within 500 horizontal feet of a private, domestic fresh water well or spring that less than five households use for domestic or stock watering purposes, or within 1000 horizontal feet of any other fresh water well or spring, in existence at the time of initial application.**

- NM Office of the State Engineer - iWATERS database search; Visual inspection (certification) of the proposed site.

☐ Yes ☐ No

**Within incorporated municipal boundaries or within a defined municipal fresh water well field covered under a municipal ordinance adopted pursuant to NMSA 1978, Section 3-27-3, as amended**

- Written confirmation or verification from the municipality; Written approval obtained from the municipality

☐ Yes ☐ No

**Within 500 feet of a wetland.**

- US Fish and Wildlife Wetland Identification map; Topographic map; Visual inspection (certification) of the proposed site

☐ Yes ☐ No

**Within the area overlying a subsurface mine.**

- Written confirmation or verification or map from the NM EMNRD - Mining and Mineral Division

☐ Yes ☐ No

**Within an unstable area.**

- Engineering measures incorporated into the design; NM Bureau of Geology & Mineral Resources; USGS; NM Geological Society; Topographic map

☐ Yes ☐ No

**Within a 100-year floodplain**

- FEMA map

☐ Yes ☐ No

11

**Temporary Pits, Emergency Pits and Below-grade Tanks Permit Application Attachment Checklist** Subsection B of 19.15.17.9 NMAC  
*Instructions: Each of the following items must be attached to the application. Please indicate, by a check mark in the box, that the documents are attached*

- ☐ Hydrogeologic Report (Below-grade Tanks) - based upon the requirements of Paragraph (4) of Subsection B of 19.15.17.9 NMAC
- ☐ Hydrogeologic Data (Temporary and Emergency Pits) - based upon the requirements of Paragraph (2) of Subsection B of 19.15.17.9 NMAC
- ☐ Siting Criteria Compliance Demonstrations - based upon the appropriate requirements of 19.15.17.10 NMAC
- ☐ Design Plan - based upon the appropriate requirements of 19.15.17.11 NMAC
- ☐ Operating and Maintenance Plan - based upon the appropriate requirements of 19.15.17.12 NMAC
- ☐ Closure Plan (Please complete Boxes 14 through 18, if applicable) - based upon the appropriate requirements of Subsection C of 19.15.17.9 NMAC and 19.15.17.13 NMAC
- ☐ Previously Approved Design (attach copy of design)      API \_\_\_\_\_ or Permit \_\_\_\_\_

12

**Closed-loop Systems Permit Application Attachment Checklist:** Subsection B of 19.15.17.9 NMAC

*Instructions: Each of the following items must be attached to the application. Please indicate, by a check mark in the box, that the documents are attached.*

- ☐ Geologic and Hydrogeologic Data (only for on-site closure) - based upon the requirements of Paragraph (3) of Subsection B of 19.15.17.9 NMAC
- ☐ Siting Criteria Compliance Demonstrations (only for on-site closure) - based upon the appropriate requirements of 19.15.17.10 NMAC
- ☐ Design Plan - based upon the appropriate requirements of 19.15.17.11 NMAC
- ☐ Operating and Maintenance Plan - based upon the appropriate requirements of 19.15.17.12 NMAC
- ☐ Closure Plan (Please complete Boxes 14 through 18, if applicable) - based upon the appropriate requirements of Subsection C of 19.15.17.9 NMAC and 19.15.17.13 NMAC
- ☐ Previously Approved Design (attach copy of design)      API \_\_\_\_\_
- ☐ Previously Approved Operating and Maintenance Plan      API \_\_\_\_\_

13

**Permanent Pits Permit Application Checklist:** Subsection B of 19.15.17.9 NMAC

*Instructions: Each of the following items must be attached to the application. Please indicate, by a check mark in the box, that the documents are attached.*

- ☐ Hydrogeologic Report - based upon the requirements of Paragraph (1) of Subsection B of 19.15.17.9 NMAC
- ☐ Siting Criteria Compliance Demonstrations - based upon the appropriate requirements of 19.15.17.10 NMAC
- ☐ Climatological Factors Assessment
- ☐ Certified Engineering Design Plans - based upon the appropriate requirements of 19.15.17.11 NMAC
- ☐ Dike Protection and Structural Integrity Design: based upon the appropriate requirements of 19.15.17.11 NMAC
- ☐ Leak Detection Design - based upon the appropriate requirements of 19.15.17.11 NMAC
- ☐ Liner Specifications and Compatibility Assessment - based upon the appropriate requirements of 19.15.17.11 NMAC
- ☐ Quality Control/Quality Assurance Construction and Installation Plan
- ☐ Operating and Maintenance Plan - based upon the appropriate requirements of 19.15.17.12 NMAC
- ☐ Freeboard and Overtopping Prevention Plan - based upon the appropriate requirements of 19.15.17.11 NMAC
- ☐ Nuisance or Hazardous Odors, including H<sub>2</sub>S, Prevention Plan
- ☐ Emergency Response Plan
- ☐ Oil Field Waste Stream Characterization
- ☐ Monitoring and Inspection Plan
- ☐ Erosion Control Plan
- ☐ Closure Plan - based upon the appropriate requirements of Subsection C of 19.15.17.9 NMAC and 19.15.17.13 NMAC

14

**Proposed Closure:** 19.15.17.13 NMAC

*Instructions: Please complete the applicable boxes, Boxes 14 through 18, in regards to the proposed closure plan.*

Type: ☐ Drilling ☐ Workover ☐ Emergency ☐ Cavitation ☐ P&A ☐ Permanent Pit ☐ Below-grade Tank ☐ Closed-loop System  
☐ Alternative

Proposed Closure Method: ☐ Waste Excavation and Removal  
☐ Waste Removal (Closed-loop systems only)  
☐ On-site Closure Method (only for temporary pits and closed-loop systems)  
☐ In-place Burial ☐ On-site Trench  
☐ Alternative Closure Method (Exceptions must be submitted to the Santa Fe Environmental Bureau for consideration)

15

**Waste Excavation and Removal Closure Plan Checklist** (19.15.17.13 NMAC) *Instructions: Each of the following items must be attached to the closure plan. Please indicate, by a check mark in the box, that the documents are attached.*

- ☐ Protocols and Procedures - based upon the appropriate requirements of 19.15.17.13 NMAC
- ☐ Confirmation Sampling Plan (if applicable) - based upon the appropriate requirements of Subsection F of 19.15.17.13 NMAC
- ☐ Disposal Facility Name and Permit Number (for liquids, drilling fluids and drill cuttings)
- ☐ Soil Backfill and Cover Design Specifications - based upon the appropriate requirements of Subsection H of 19.15.17.13 NMAC
- ☐ Re-vegetation Plan - based upon the appropriate requirements of Subsection I of 19.15.17.13 NMAC
- ☐ Site Reclamation Plan - based upon the appropriate requirements of Subsection G of 19.15.17.13 NMAC

**Waste Removal Closure For Closed-loop Systems That Utilize Above Ground Steel Tanks or Haul-off Bins Only:** (19.15.17.13.D NMAC)

*Instructions: Please identify the facility or facilities for the disposal of liquids, drilling fluids and drill cuttings. Use attachment if more than two facilities are required.*

Disposal Facility Name: \_\_\_\_\_ Disposal Facility Permit #: \_\_\_\_\_

Disposal Facility Name: \_\_\_\_\_ Disposal Facility Permit #: \_\_\_\_\_

Will any of the proposed closed-loop system operations and associated activities occur on or in areas that *will not* be used for future service and

☐ Yes (If yes, please provide the information) ☐ No

*Required for impacted areas which will not be used for future service and operations*

☐ Soil Backfill and Cover Design Specification - based upon the appropriate requirements of Subsection H of 19.15.17.13 NMAC

☐ Re-vegetation Plan - based upon the appropriate requirements of Subsection I of 19.15.17.13 NMAC

☐ Site Reclamation Plan - based upon the appropriate requirements of Subsection G of 19.15.17.13 NMAC

**Siting Criteria (Regarding on-site closure methods only):** 19.15.17.10 NMAC

*Instructions: Each siting criteria requires a demonstration of compliance in the closure plan. Recommendations of acceptable source material are provided below. Requests regarding changes to certain siting criteria may require administrative approval from the appropriate district office or may be considered an exception which must be submitted to the Santa Fe Environmental Bureau office for consideration of approval. Justifications and/or demonstrations of equivalency are required. Please refer to 19.15.17.10 NMAC for guidance.*

Ground water is less than 50 feet below the bottom of the buried waste.

- NM Office of the State Engineer - iWATERS database search; USGS; Data obtained from nearby wells

☐ Yes ☐ No

☐ N/A

Ground water is between 50 and 100 feet below the bottom of the buried waste

- NM Office of the State Engineer - iWATERS database search; USGS; Data obtained from nearby wells

☐ Yes ☐ No

☐ N/A

Ground water is more than 100 feet below the bottom of the buried waste.

- NM Office of the State Engineer - iWATERS database search; USGS; Data obtained from nearby wells

☐ Yes ☐ No

☐ N/A

Within 300 feet of a continuously flowing watercourse, or 200 feet of any other significant watercourse or lakebed, sinkhole, or playa lake (measured from the ordinary high-water mark).

- Topographic map; Visual inspection (certification) of the proposed site

☐ Yes ☐ No

Within 300 feet from a permanent residence, school, hospital, institution, or church in existence at the time of initial application.

- Visual inspection (certification) of the proposed site; Aerial photo, satellite image

☐ Yes ☐ No

☐ Yes ☐ No

Within 500 horizontal feet of a private, domestic fresh water well or spring that less than five households use for domestic or stock watering purposes, or within 1000 horizontal feet of any other fresh water well or spring, in existence at the time of the initial application

- NM Office of the State Engineer - iWATERS database; Visual inspection (certification) of the proposed site

☐ Yes ☐ No

Within incorporated municipal boundaries or within a defined municipal fresh water well field covered under a municipal ordinance adopted pursuant to NMSA 1978, Section 3-27-3, as amended.

- Written confirmation or verification from the municipality; Written approval obtained from the municipality

☐ Yes ☐ No

Within 500 feet of a wetland

- US Fish and Wildlife Wetland Identification map, Topographic map, Visual inspection (certification) of the proposed site

☐ Yes ☐ No

Within the area overlying a subsurface mine.

- Written confirmation or verification or map from the NM EMNRD-Mining and Mineral Division

☐ Yes ☐ No

Within an unstable area.

- Engineering measures incorporated into the design, NM Bureau of Geology & Mineral Resources, USGS; NM Geological Society; Topographic map

☐ Yes ☐ No

Within a 100-year floodplain.

- FEMA map

☐ Yes ☐ No

**On-Site Closure Plan Checklist:** (19.15.17.13 NMAC) *Instructions: Each of the following items must be attached to the closure plan. Please indicate, by a check mark in the box, that the documents are attached.*

☐ Siting Criteria Compliance Demonstrations - based upon the appropriate requirements of 19.15.17.10 NMAC

☐ Proof of Surface Owner Notice - based upon the appropriate requirements of Subsection F of 19.15.17.13 NMAC

☐ Construction/Design Plan of Burial Trench (if applicable) based upon the appropriate requirements of 19.15.17.11 NMAC

☐ Construction/Design Plan of Temporary Pit (for in place burial of a drying pad) - based upon the appropriate requirements of 19.15.17.11 NMAC

☐ Protocols and Procedures - based upon the appropriate requirements of 19.15.17.13 NMAC

☐ Confirmation Sampling Plan (if applicable) - based upon the appropriate requirements of Subsection F of 19.15.17.13 NMAC

☐ Waste Material Sampling Plan - based upon the appropriate requirements of Subsection F of 19.15.17.13 NMAC

☐ Disposal Facility Name and Permit Number (for liquids, drilling fluids and drill cuttings or in case on-site closure standards cannot be achieved)

☐ Soil Cover Design - based upon the appropriate requirements of Subsection H of 19.15.17.13 NMAC

☐ Re-vegetation Plan - based upon the appropriate requirements of Subsection I of 19.15.17.13 NMAC

☐ Site Reclamation Plan - based upon the appropriate requirements of Subsection G of 19.15.17.13 NMAC

19

**Operator Application Certification:**

I hereby certify that the information submitted with this application is true, accurate and complete to the best of my knowledge and belief

Name (Print): \_\_\_\_\_ Title: \_\_\_\_\_  
 Signature: \_\_\_\_\_ Date: \_\_\_\_\_  
 e-mail address: \_\_\_\_\_ Telephone: \_\_\_\_\_

20

**OCD Approval:** ☐ Permit Application (including closure plan) ☒ Closure Plan (only) ☐ OCD Conditions (see attachment)

**OCD Representative Signature:** Jonathan D. Kelly **Approval Date:** 11/30/2011  
**Title:** Compliance Officer **OCD Permit Number:** \_\_\_\_\_

21

**Closure Report (required within 60 days of closure completion):** Subsection K of 19 15 17 13 NMAC

*Instructions: Operators are required to obtain an approved closure plan prior to implementing any closure activities and submitting the closure report. The closure report is required to be submitted to the division within 60 days of the completion of the closure activities. Please do not complete this section of the form until an approved closure plan has been obtained and the closure activities have been completed.*

☒ **Closure Completion Date:** August 3, 2011

22

**Closure Method:**

☒ Waste Excavation and Removal ☐ On-site Closure Method ☐ Alternative Closure Method ☐ Waste Removal (Closed-loop systems only)  
☐ If different from approved plan, please explain

23

**Closure Report Regarding Waste Removal Closure For Closed-loop Systems That Utilize Above Ground Steel Tanks or Haul-off Bins Only:**

*Instructions: Please identify the facility or facilities for where the liquids, drilling fluids and drill cuttings were disposed. Use attachment if more than two facilities were utilized.*

Disposal Facility Name: Envirotech / JFJ Landfarm % IEI Disposal Facility Permit Number NM-01-0011 / NM -01-0010B  
 Disposal Facility Name: Basin Disposal Facility Disposal Facility Permit Number: NM-01-005

Were the closed-loop system operations and associated activities performed on or in areas that *will not* be used for future service and operations?

☒ Yes (If yes, please demonstrate compliance to the items below) ☐ No

*Required for impacted areas which will not be used for future service and operations.*

☒ Site Reclamation (Photo Documentation)  
☒ Soil Backfilling and Cover Installation  
☒ Re-vegetation Application Rates and Seeding Technique

24

**Closure Report Attachment Checklist:** *Instructions: Each of the following items must be attached to the closure report. Please indicate, by a check mark in the box, that the documents are attached.*

☐ Proof of Closure Notice (surface owner and division)  
☐ Proof of Deed Notice (required for on-site closure)  
☒ Plot Plan (for on-site closures and temporary pits)  
☒ Confirmation Sampling Analytical Results (if applicable)  
☒ Waste Material Sampling Analytical Results (if applicable)  
☒ Disposal Facility Name and Permit Number  
☒ Soil Backfilling and Cover Installation  
☒ Re-vegetation Application Rates and Seeding Technique  
☒ Site Reclamation (Photo Documentation)

On-site Closure Location. Latitude: \_\_\_\_\_ °N Longitude: \_\_\_\_\_ °W NAD ☐ 1927 ☐ 1983

25

**Operator Closure Certification:**

*I hereby certify that the information and attachments submitted with this closure report is true, accurate and complete to the best of my knowledge and belief. I also certify that the closure complies with all applicable closure requirements and conditions specified in the approved closure plan.*

Name (Print): Jamie Goodwin Title: Regulatory Tech.  
 Signature: Jamie Goodwin Date: 11/22/11  
 e-mail address: jamie.l.goodwin@conocophillips.com Telephone: 505-326-9784

**Burlington Resources Oil Gas Company, LP**  
**San Juan Basin**  
**Closure Report**

**Lease Name: SAN JUAN 29-7 UNIT 84B**

**API No.: 30-039-30868**

In accordance with Rule 19.15.17.13 NMAC the following information describes the closure of the temporary pit referenced above. All proper documentation regarding closure activities is being included with the C-144. The temporary pit for this location was constructed and location drilled before June 16, 2008 (effective date for Rule 19.15.17). While closure of the temporary pit did fall within the rule some dates for submittals are after the rig release date.

- Details on Capping and Covering, where applicable. **(See report)**
- Plot Plan (Pit Diagram) **(Included as an attachment)**
- Inspection Reports **(Included as an attachment)**
- Sampling Results **(Included as an attachment)**
- C-105 **(Included as an attachment)**
- C-141 **(Included as an attachment)**
- Copy of Deed Notice will be filed with County Clerk **(Not required on Federal, State, or Tribal land as stated by FAQ dated October 30, 2008)**

**General Plan:**

1. All free standing liquids will be removed at the start of the pit closure process from the pit and disposed of in a division-approved facility or recycle, reuse or reclaim the liquids in a manner that the appropriate division district office approves.

**All recovered liquids were disposed of at Basin Disposal (Permit #NM-01-005) any sludge or soil required to be removed to facilitate closure was hauled to Envirotech Land Farm (Permit #NM-01-011) and JFJ Landfarm % IEI (Permit #NM-01-0010B).**

2. The surface owner shall be notified of BR's closing of the temporary pit as per the approved closure plan using certified mail, return receipt requested.

**The closure process notification to the landowner was sent via email. (See Attached)(Well located on Federal Land, certified mail is not required for Federal Land per BLM/OCD MOU.)**

3. Within 6 months of the Rig Off status occurring BR will ensure that temporary pits are closed, re-contoured, and reseeded.

**Provision 4 of the closure plan requirements were not met due to rig move off date as noted on C-105 which was prior to pit rule change. Burlington will ensure compliance with this rule in the future.**

4. Notice of Closure will be given to the Aztec Division office between 72 hours and one week of closure via email, or verbally. The notification of closure will include the following:
  - i. Operator's name
  - ii. Location by Unit Letter, Section, Township, and Range. Well name and API number.

**Notification is attached.**

5. All contents of the temporary pit including the liner will be excavated and hauled to the Envirotech Land Farm located 16 miles south of Bloomfield on Angel Peak Road, CR 7175. Permit #NM-01-0011.

**Liner of temporary pit and pit contents was excavated and hauled to Envirotech Land Farm (Permit #NM-01-0011). Care was taken to remove "ALL" of the liner i.e., edges of liner entrenched or buried.**

6. A five point composite sample will be taken of the pit using sampling tools and all samples tested per Subsection B of 19.15.17.13(B)(1)(b). In the event that the criteria are not met, all contents will be handled per Subparagraph (a) of Paragraph (1) of Subsection B of 19.15.17.13 i.e., Dig and haul.

**A five point composite sample was taken from the soil beneath the pit to conclude if a release had occurred using sampling tools and all samples tested per Subsection B of 19.15.17.13(B)(1)(b). (Sample results attached).**

Components	Tests Method	Limit (mg/Kg)	Results
Benzene	EPA SW-846 8021B or 8260B	0.2	1.4 ug/kg
BTEX	EPA SW-846 8021B or 8260B	50	68.5 ug/kg
TPH	EPA SW-846 418.1	2500	114mg/kg
GRO/DRO	EPA SW-846 8015M	500	4.7 mg/Kg
Chlorides	EPA 300.1	1000/500	600 mg/L

7. Upon testing standards being passed, the pit area will be backfilled with compacted, non-waste containing, earthen material. The cover shall include one foot of suitable material to establish vegetation at the site, or the background thickness of topsoil, whichever is greater.

**The pit area passed testing standards. The pit area was then backfilled with compacted, non-waste containing, earthen material. The cover included one foot of suitable material to establish vegetation at the site.**

8. Re-contouring of location will match fit, shape, line, form and texture of the surrounding. Re-shaping will include drainage control, prevent ponding, and prevent erosion. Natural drainages will be unimpeded and water bars and/or silt traps will be place in areas where needed to prevent erosion on a large scale. Final re-contour shall have a uniform appearance with smooth surface, fitting the natural landscape.

**The pit area was re-contoured to match fit, shape, line, form and texture of the surrounding area. Re-shaping included drainage control, to prevent ponding and erosion. Natural drainages were unimpeded and water bars and/or silt traps were placed in areas where needed to prevent erosion on a large scale. Final re-contour has a uniform appearance with smooth surface, fitting the natural landscape.**

9. Notification will be sent to OCD when the reclaimed area is seeded.

**Provision 13 was accomplished through complying with BLM seeding requirements as allowed by the BLM/OCD MOU.**

10. BR shall seed the disturbed areas the first growing season after the operator closes the pit. Seeding will be accomplished via drilling on the contour whenever practical or by other division-approved methods. BLM or Forest Service stipulated seed mixes will used on federal lands. Vegetative cover will equal 70% of the native perennial vegetative cover (un-impacted) consisting of at least three native plant species, including at least one grass, but not including noxious weeds, and maintain that cover through two successive growing seasons. Repeat seeding or planting will be continued until successful vegetative growth occurs.

**Provision 14 was accomplished through complying with BLM seeding requirements as allowed by the BLM/OCD MOU.**

11. The temporary pit will be located with a steel marker, no less than four inches in diameter, cemented in a hole three feet deep in the center of the onsite burial upon the abandonment of all the wells on the pad. The marker will be flush with the ground to allow access of the active well pad and for safety concerns. The marker will include a threaded collar to be used for future abandonment. The top of the marker will contain a welded steel 12" square plate that indicates the onsite burial of the temporary pit. The plate will be easily removable and a four foot tall riser will be threaded into the top of the collar marker and welded around the base with the operator's information at the time of all wells on the pad are abandoned. The operator's information will include the following: Operator Name, Lease Name, Well Name and number, Unit Number, Section, Township, Range and an indicator that the marker is an onsite burial location.

**The temporary pit was excavated and no on-site burial marker was required.**



**Busse, Dollie L.**

---

**From:** Busse, Dollie L.  
**Sent:** Wednesday, December 02, 2009 8:29 AM  
**To:** Mark\_Kelly@blm.gov  
**Cc:** Jaramillo, Marie E; Sessions, Tamra D; Tafoya, Crystal  
**Subject:** Surface Owner Notification

The following locations will have a temporary pit closed on-site:

Newberry 8B  
Mansfield 2M  
Gobernador Com 100  
San Juan 29-7 Unit 84B  
Newberry A 4N  
San Juan 30-6 Unit 35B  
San Juan 30-6 Unit 40N  
San Juan 32-8 Unit 22B

Please let me know if you have any questions or need additional information.

Thank you,

**Dollie L. Busse**  
ConocoPhillips Company-SJBU  
Regulatory  
Staff Regulatory Tech  
505-324-6104  
505-599-4062 (fax)  
[Dollie.L.Busse@conocophillips.com](mailto:Dollie.L.Busse@conocophillips.com)

*"Before someone's tomorrow has been taken away, cherish those you love, appreciate them today"*

DISTRICT I  
1625 N. French Dr., Hobbs, N.M. 88240

DISTRICT II  
1301 West Grand Avenue, Artesia, N.M. 88210

DISTRICT III  
1000 Rio Brazos Rd., Aztec, N.M. 87410

DISTRICT IV  
1220 S. St. Francis Dr., Santa Fe, NM 87505

State of New Mexico  
Energy, Minerals & Natural Resources Department

OIL CONSERVATION DIVISION  
1220 South St. Francis Dr.  
Santa Fe, NM 87505

Form C-102  
Revised October 12, 2005

Submit to Appropriate District Office  
State Lease - 4 Copies  
Fee Lease - 3 Copies

☐ AMENDED REPORT

### WELL LOCATION AND ACREAGE DEDICATION PLAT

<sup>1</sup> API Number	<sup>2</sup> Pool Code	<sup>3</sup> Pool Name BASIN DAKOTA/BLANCO MESAVERDE
<sup>4</sup> Property Code	<sup>5</sup> Property Name SAN JUAN 29 - 7 UNIT	<sup>6</sup> Well Number 84B
<sup>7</sup> GRID No.	<sup>8</sup> Operator Name BURLINGTON RESOURCES OIL & GAS COMPANY LP	<sup>9</sup> Elevation 6834'

#### <sup>10</sup> Surface Location

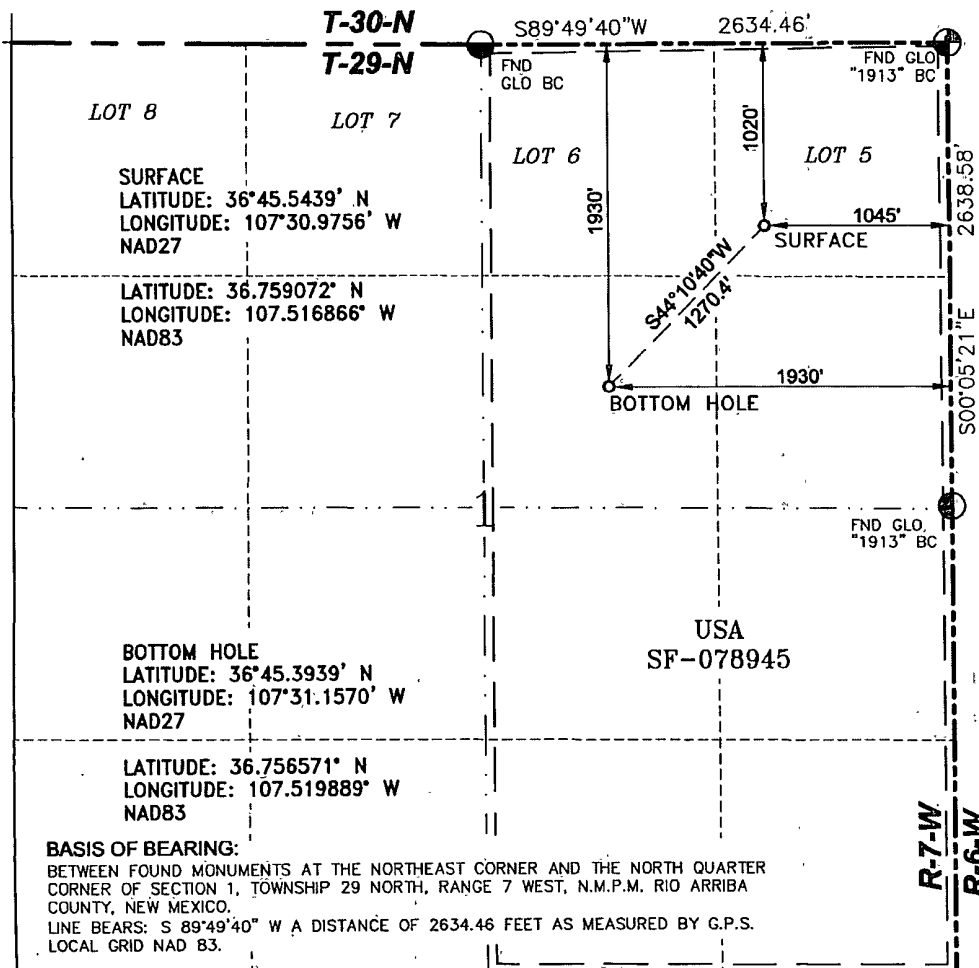
UL or lot no.	Section	Township	Range	Lot Idn	Feet from the	North/South line	Feet from the	East/West line	County
A	1	29-N	7-W		1020	NORTH	1045	EAST	RIO ARRIBA

#### <sup>11</sup> Bottom Hole Location If Different From Surface

UL or lot no.	Section	Township	Range	Lot Idn	Feet from the	North/South line	Feet from the	East/West line	County
G	1	29-N	7-W		1930	NORTH	1930	EAST	RIO ARRIBA
<sup>12</sup> Dedicated Acres DK 319.52 ACRES E/2 MV 319.52 ACRES E/2			<sup>13</sup> Joint or Infill		<sup>14</sup> Consolidation Code		<sup>15</sup> Order No.		

NO ALLOWABLE WILL BE ASSIGNED TO THIS COMPLETION UNTIL ALL INTERESTS HAVE BEEN CONSOLIDATED  
OR A NON-STANDARD UNIT HAS BEEN APPROVED BY THE DIVISION

16



#### 17 OPERATOR CERTIFICATION

I hereby certify that the information contained herein is true and complete to the best of my knowledge and belief, and that this organization either owns a working interest or unleased mineral interest in the land including the proposed bottom hole location or has a right to drill this well at this location pursuant to a contract with an owner of such a mineral or a working interest, or to a voluntary pooling agreement or a compulsory pooling order heretofore entered by the division.

Signature

Printed Name

#### 18 SURVEYOR CERTIFICATION

I hereby certify that the well location shown on this plat was plotted from field notes of actual surveys made by me or under my supervision, and that the same is true and correct to the best of my belief.

AUGUST 14, 2009  
Date of Survey

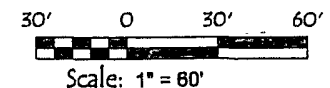
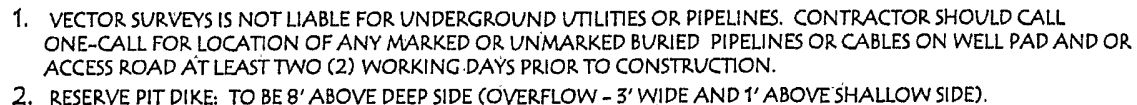
Signature and Seal of



GLEN W. RUSSELL  
Certificate Number

15703

SAN JUAN 29-7 UNIT #84B, 1020' FNL & 1045' FEL  
SECTION 1, T-29-N, R-7-W, NMPM, RIO ARriba COUNTY, NM  
GROUND ELEVATION: 6834', DATE: JUNE 9, 2009



District I  
1625 N French Dr , Hobbs, NM 88240  
District II  
1301 W. Grand Avenue, Artesia, NM 88210  
District III  
1000 Rio Brazos Road, Aztec, NM 87410  
District IV  
1220 S St. Francis Dr , Santa Fe, NM 87505

State of New Mexico  
Energy Minerals and Natural Resources  
Oil Conservation Division  
1220 South St. Francis Dr.  
Santa Fe, NM 87505

Form C-141  
Revised October 10, 2003

Submit 2 Copies to appropriate  
District Office in accordance  
with Rule 116 on back  
side of form

### Release Notification and Corrective Action

#### OPERATOR

☐ Initial Report ☒ Final Report

Name of Company <b>BURLINGTON RESOURCES OIL &amp; GAS COMPANY LP</b>	Contact <b>Jamie Goodwin</b>
Address <b>3401 East 30<sup>th</sup> St, Farmington, NM</b>	Telephone No. <b>(505) 326-9784</b>
Facility Name: <b>SAN JUAN 29-7 UNIT 84B</b>	Facility Type: <b>Gas Well</b>

Surface Owner <b>BLM</b>	Mineral Owner <b>FEDERAL</b>	Lease No. <b>SF - 078945</b>
--------------------------	------------------------------	------------------------------

#### LOCATION OF RELEASE

Unit Letter <b>A</b>	Section <b>1</b>	Township <b>29N</b>	Range <b>7W</b>	Feet from the	North/South Line	Feet from the	East/West Line	County <b>RIO ARRIBA</b>
-------------------------	---------------------	------------------------	--------------------	---------------	------------------	---------------	----------------	-----------------------------

Latitude **36.759072** Longitude **107.516866**

#### NATURE OF RELEASE

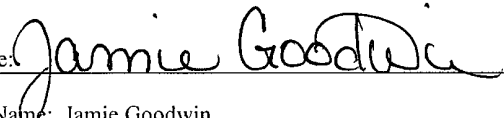
Type of Release <b>Pit Closure Summary</b>	Volume of Release <b>N/A</b>	Volume Recovered <b>N/A</b>
Source of Release <b>N/A</b>	Date and Hour of Occurrence <b>N/A</b>	Date and Hour of Discovery <b>N/A</b>
Was Immediate Notice Given? <input type="checkbox"/> Yes <input type="checkbox"/> No <input checked="" type="checkbox"/> Not Required	If YES, To Whom? <b>N/A</b>	
By Whom? <b>N/A</b>	Date and Hour <b>N/A</b>	
Was a Watercourse Reached? <b>N/A</b> <input type="checkbox"/> Yes <input type="checkbox"/> No	If YES, Volume Impacting the Watercourse. <b>N/A</b>	

If a Watercourse was Impacted, Describe Fully.\*  
**N/A**

Describe Cause of Problem and Remedial Action Taken.\*  
**N/A**

Describe Area Affected and Cleanup Action Taken.\*  
**N/A**

I hereby certify that the information given above is true and complete to the best of my knowledge and understand that pursuant to NMOCD rules and regulations all operators are required to report and/or file certain release notifications and perform corrective actions for releases which may endanger public health or the environment. The acceptance of a C-141 report by the NMOCD marked as "Final Report" does not relieve the operator of liability should their operations have failed to adequately investigate and remediate contamination that pose a threat to ground water, surface water, human health or the environment. In addition, NMOCD acceptance of a C-141 report does not relieve the operator of responsibility for compliance with any other federal, state, or local laws and/or regulations.

Signature: 	<b>OIL CONSERVATION DIVISION</b>	
Printed Name: <b>Jamie Goodwin</b>	Approved by District Supervisor:	
Title: <b>Regulatory Tech</b>	Approval Date:	Expiration Date:
E-mail Address: <b>jamie.l.goodwin@conocophillips.com</b>	Conditions of Approval:	Attached <input type="checkbox"/>
Date: <b>11/22/11</b> Phone: <b>(505) 326-9784</b>		

\* Attach Additional Sheets If Necessary



**envirotech**  
Analytical Laboratory

**EPA METHOD 8015 Modified  
Nonhalogenated Volatile Organics  
Total Petroleum Hydrocarbons**

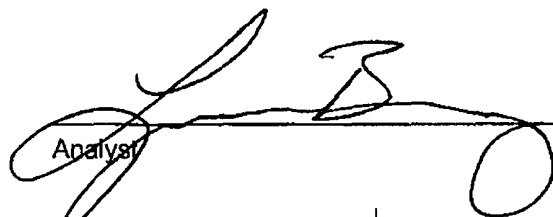
Client:	ConocoPhillips	Project #:	96052-1706
Sample ID:	Back Ground	Date Reported:	06-22-11
Laboratory Number:	58602	Sampled:	06-21-11
Chain of Custody No:	11969	Date Received:	06-21-11
Sample Matrix:	Soil	Date Extracted:	06-21-11
Preservative:	Cool	Date Analyzed:	06-22-11
Condition:	Intact	Analysis Requested:	8015 TPH

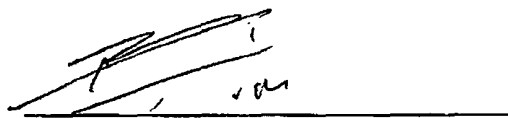
Parameter	Concentration (mg/Kg)	Det. Limit (mg/Kg)
Gasoline Range (C5 - C10)	ND	0.2
Diesel Range (C10 - C28)	ND	0.1
Total Petroleum Hydrocarbons	ND	

ND - Parameter not detected at the stated detection limit.

References: Method 8015B, Nonhalogenated Volatile Organics, Test Methods for Evaluating Solid Waste, SW-846, USEPA, December 1996.

Comments: **S.J. 29-7 # Unit 84B**

  
Analyst

  
Review

**EPA METHOD 8015 Modified  
Nonhalogenated Volatile Organics  
Total Petroleum Hydrocarbons**

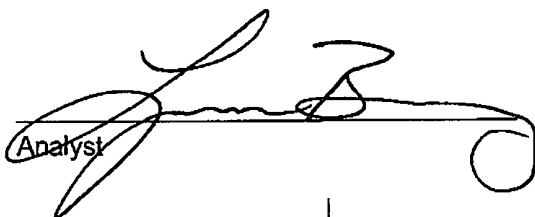
Client:	ConocoPhillips	Project #:	96052-1966
Sample ID:	Reserve Pit	Date Reported:	06-22-11
Laboratory Number:	58603	Sampled:	06-21-11
Chain of Custody No:	11969	Date Received:	06-21-11
Sample Matrix:	Soil	Date Extracted:	06-22-11
Preservative:	Cool	Date Analyzed:	06-22-11
Condition:	Intact	Analysis Requested:	8015 TPH

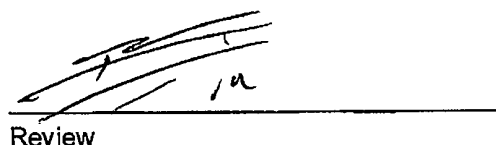
Parameter	Concentration (mg/Kg)	Det. Limit (mg/Kg)
Gasoline Range (C5 - C10)	ND	0.2
Diesel Range (C10 - C28)	4.7	0.1
Total Petroleum Hydrocarbons	4.7	

ND - Parameter not detected at the stated detection limit.

References: Method 8015B, Nonhalogenated Volatile Organics, Test Methods for Evaluating Solid Waste, SW-846, USEPA, December 1996.

Comments: **S.J. 29-7 # Unit 84B**

  
Analyst

  
Review

**EPA Method 8015 Modified  
 Nonhalogenated Volatile Organics  
 Total Petroleum Hydrocarbons**

**Quality Assurance Report**

Client:	QA/QC	Project #:	N/A
Sample ID:	06-22-11 QA/QC	Date Reported:	06-22-11
Laboratory Number:	58602	Date Sampled:	N/A
Sample Matrix:	Methylene Chloride	Date Received:	N/A
Preservative:	N/A	Date Analyzed:	06-22-11
Condition:	N/A	Analysis Requested:	TPH

	I-Cal Date	I-Cal RF	C-Cal RF	% Difference	Accept. Range
Gasoline Range C5 - C10	06/22/11	9.996E+02	1.000E+03	0.04%	0 - 15%
Diesel Range C10 - C28	06/22/11	9.996E+02	1.000E+03	0.04%	0 - 15%

Blank Conc. (mg/L - mg/Kg)	Concentration	Detection Limit
Gasoline Range C5 - C10	4.0	0.2
Diesel Range C10 - C28	2.3	0.1

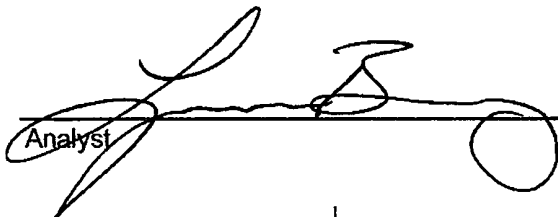
Duplicate Conc. (mg/Kg)	Sample	Duplicate	% Difference	Range
Gasoline Range C5 - C10	ND	ND	0.00%	0 - 30%
Diesel Range C10 - C28	ND	ND	0.00%	0 - 30%

Spike Conc. (mg/Kg)	Sample	Spike Added	Spike Result	% Recovery	Accept. Range
Gasoline Range C5 - C10	ND	250	242	96.7%	75 - 125%
Diesel Range C10 - C28	ND	250	250	100%	75 - 125%

ND - Parameter not detected at the stated detection limit.

References: Method 8015B, Nonhalogenated Volatile Organics, Test Methods for Evaluating Solid Waste,  
 SW-846, USEPA, December 1996.

Comments: QA/QC for Samples 58602-58603, 58608-58610

  
 Analyst

  
 Review



Client:	ConocoPhillips	Project #:	96052-1706
Sample ID:	Back Ground	Date Reported:	06-22-11
Laboratory Number:	58602	Date Sampled:	06-21-11
Chain of Custody:	11969	Date Received:	06-21-11
Sample Matrix:	Soil	Date Analyzed:	06-22-11
Preservative:	Cool	Date Extracted:	06-21-11
Condition:	Intact	Analysis Requested:	BTEX
		Dilution:	10

Parameter	Concentration (ug/Kg)	Det. Limit (ug/Kg)
Benzene	ND	0.9
Toluene	ND	1.0
Ethylbenzene	ND	1.0
p,m-Xylene	ND	1.2
o-Xylene	ND	0.9
Total BTEX	ND	

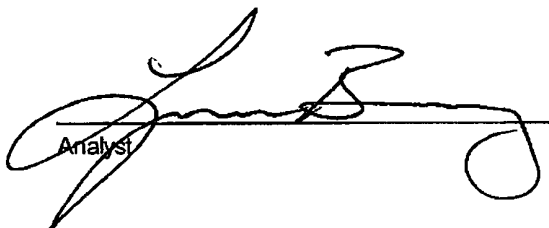
ND - Parameter not detected at the stated detection limit.

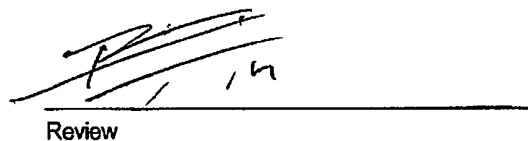
Surrogate Recoveries:	Parameter	Percent Recovery
	Fluorobenzene	86.4 %
	1,4-difluorobenzene	94.0 %
	Bromochlorobenzene	95.4 %

References: Method 5030B, Purge-and-Trap, Test Methods for Evaluating Solid Waste, SW-846, USEPA, December 1996.

Method 8021B, Aromatic Volatile Organics, Test Methods for Evaluating Solid Waste, SW-846, USEPA, December 1996.

Comments: S.J. 29-7 # Unit 84B

  
Analyst

  
Review





Client:	ConocoPhillips	Project #:	96052-1706
Sample ID:	Reserve Pit	Date Reported:	06-22-11
Laboratory Number:	58603	Date Sampled:	06-21-11
Chain of Custody:	11969	Date Received:	06-21-11
Sample Matrix:	Soil	Date Analyzed:	06-22-11
Preservative:	Cool	Date Extracted:	06-21-11
Condition:	Intact	Analysis Requested:	BTEX
		Dilution:	10

Parameter	Concentration (ug/Kg)	Det. Limit (ug/Kg)
Benzene	1.4	0.9
Toluene	17.3	1.0
Ethylbenzene	2.7	1.0
p,m-Xylene	35.9	1.2
o-Xylene	11.2	0.9
Total BTEX	68.5	

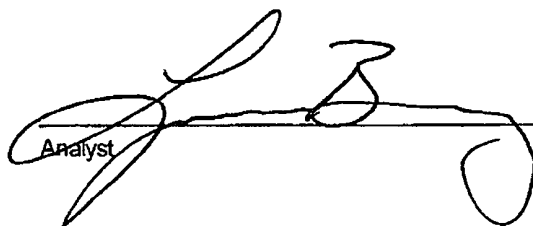
ND - Parameter not detected at the stated detection limit.


Surrogate Recoveries:	Parameter	Percent Recovery
	Fluorobenzene	81.1 %
	1,4-difluorobenzene	83.0 %
	Bromochlorobenzene	93.0 %

References: Method 5030B, Purge-and-Trap, Test Methods for Evaluating Solid Waste, SW-846, USEPA, December 1996.

Method 8021B, Aromatic Volatile Organics, Test Methods for Evaluating Solid Waste, SW-846, USEPA, December 1996.

Comments: S.J. 29-7 # Unit 84B

Analyst 

  
Review



Client:	N/A	Project #:	N/A
Sample ID:	0622BBLK QA/QC	Date Reported:	06-22-11
Laboratory Number:	58602	Date Sampled:	N/A
Sample Matrix:	Soil	Date Received:	N/A
Preservative:	N/A	Date Analyzed:	06-22-11
Condition:	N/A	Analysis:	BTEX
		Dilution:	10

Calibration and Detection Limits (ug/L)	I-Cal RF	C-Cal RF	%Diff	Blank Conc	Detect. Limit
		Accept. Range 0 - 15%			
Benzene	4.4023E+006	4.4111E+006	0.2%	ND	0.1
Toluene	4.5294E+006	4.5385E+006	0.2%	ND	0.1
Ethylbenzene	4.0161E+006	4.0242E+006	0.2%	ND	0.1
p,m-Xylene	1.1143E+007	1.1165E+007	0.2%	ND	0.1
o-Xylene	3.9094E+006	3.9173E+006	0.2%	ND	0.1

Duplicate Conc. (ug/Kg)	Sample	Duplicate	%Diff	Accept Range	Detect. Limit
Benzene	ND	ND	0.0%	0 - 30%	0.9
Toluene	ND	ND	0.0%	0 - 30%	1.0
Ethylbenzene	ND	ND	0.0%	0 - 30%	1.0
p,m-Xylene	ND	ND	0.0%	0 - 30%	1.2
o-Xylene	ND	ND	0.0%	0 - 30%	0.9

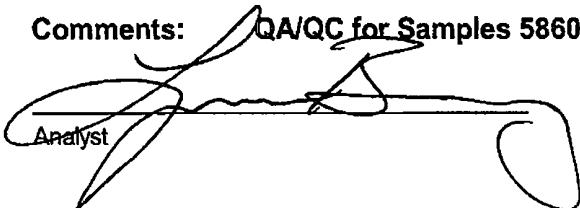
Spike Conc. (ug/Kg)	Sample	Amount Spiked	Spiked Sample	% Recovery	Accept Range
Benzene	ND	500	504	101%	39 - 150
Toluene	ND	500	505	101%	46 - 148
Ethylbenzene	ND	500	501	100%	32 - 160
p,m-Xylene	ND	1000	1,000	100%	46 - 148
o-Xylene	ND	500	503	101%	46 - 148

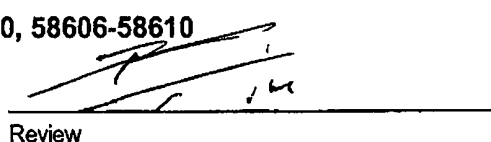
ND - Parameter not detected at the stated detection limit.

Dilution: Spike and spiked sample concentration represent a dilution proportional to sample dilution.

References: Method 5030B, Purge-and-Trap, Test Methods for Evaluating Solid Waste, SW-846, USEPA, December 1996.  
Method 8021B, Aromatic and Halogenated Volatiles by Gas Chromatography Using Photoionization and/or Electrolytic Conductivity Detectors, SW-846, USEPA December 1996.

Comments: QA/QC for Samples 58602-58603, 58600, 58606-58610

Analyst 

Review 



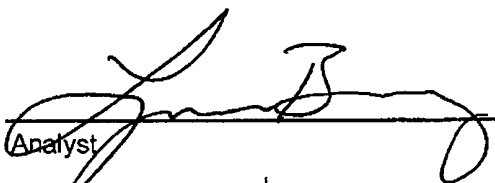
Client:	ConocoPhillips	Project #:	96052-1706
Sample ID:	Back Ground	Date Reported:	06/22/11
Laboratory Number:	58602	Date Sampled:	06/21/11
Chain of Custody No:	11969	Date Received:	06/21/11
Sample Matrix:	Soil	Date Extracted:	06/22/11
Preservative:	Cool	Date Analyzed:	06/22/11
Condition:	Intact	Analysis Needed:	TPH-418.1

Parameter	Concentration (mg/kg)	Det. Limit (mg/kg)
Total Petroleum Hydrocarbons	97.3	5.0

ND = Parameter not detected at the stated detection limit.

References: Method 418.1, Petroleum Hydrocarbons, Total Recoverable, Chemical Analysis of Water and Waste, USEPA Storet No. 4551, 1978.

Comments: **San Juan 29-7 # Unit 84B**

  
\_\_\_\_\_  
Analyst

  
\_\_\_\_\_  
Review



Client:	ConocoPhillips	Project #:	96052-1706
Sample ID:	Reserve Pit	Date Reported:	06/22/11
Laboratory Number:	58603	Date Sampled:	06/21/11
Chain of Custody No:	11969	Date Received:	06/21/11
Sample Matrix:	Soil	Date Extracted:	06/22/11
Preservative:	Cool	Date Analyzed:	06/22/11
Condition:	Intact	Analysis Needed:	TPH-418.1


Parameter	Concentration (mg/kg)	Det. Limit (mg/kg)
Total Petroleum Hydrocarbons	114	5.0

ND = Parameter not detected at the stated detection limit.

References: Method 418.1, Petroleum Hydrocarbons, Total Recoverable, Chemical Analysis of Water and Waste, USEPA Storet No. 4551, 1978.

Comments: San Juan 29-7 # Unit 84B

  
Analyst

  
Review



**EPA METHOD 418.1  
TOTAL PETROLEUM HYDROCARBONS  
QUALITY ASSURANCE REPORT**

Client:	QA/QC	Project #:	N/A
Sample ID:	QA/QC	Date Reported:	06/22/11
Laboratory Number:	06-22-TPH.QA/QC 58602	Date Sampled:	N/A
Sample Matrix:	Freon-113	Date Analyzed:	06/22/11
Preservative:	N/A	Date Extracted:	06/22/11
Condition:	N/A	Analysis Needed:	TPH

Calibration	I-Cal Date	C-Cal Date	I-Cal RF:	C-Cal RF:	% Difference	Accept. Range
	06/14/11	06/22/11	1,760	1,670	5.1%	+/- 10%

Blank Conc. (mg/Kg)	Concentration	Detection Limit
TPH	ND	8.5

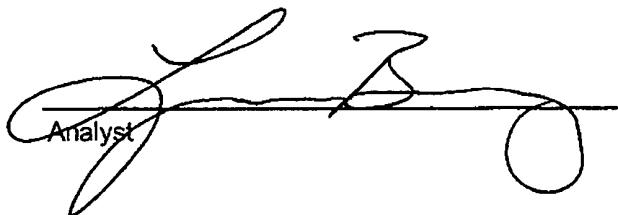
Duplicate Conc. (mg/Kg)	Sample	Duplicate	% Difference	Accept. Range
TPH	97.3	94.5	2.9%	+/- 30%

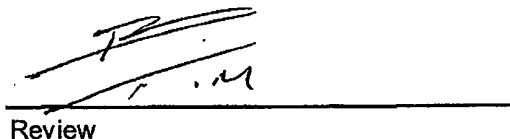
Spike Conc. (mg/Kg)	Sample	Spike Added	Spike Result	% Recovery	Accept Range
TPH	97.3	2,000	1,900	90.6%	80 - 120%

ND = Parameter not detected at the stated detection limit.

References: Method 418.1, Petroleum Hydrocarbons, Total Recoverable, Chemical Analysis of Water and Waste, USEPA Storet No. 4551, 1978.

Comments: QA/QC for Samples 58602-58603

  
Analyst

  
Review



Client:	ConocoPhillips	Project #:	96052-1706
Sample ID:	Back Ground	Date Reported:	06/22/11
Lab ID#:	58602	Date Sampled:	06/21/11
Sample Matrix:	Soil	Date Received:	06/21/11
Preservative:	Cool	Date Analyzed:	06/22/11
Condition:	Intact	Chain of Custody:	11969


Parameter	Concentration (mg/Kg)
-----------	-----------------------


**Total Chloride**

**20**

Reference: U.S.E.P.A., 4500B, "Methods for Chemical Analysis of Water and Wastes", 1983.  
Standard Methods For The Examination of Water And Waste Water", 18th ed., 1992.

Comments: **S.J. 29-7 # Unit 84B**

  
\_\_\_\_\_  
Analyst

  
\_\_\_\_\_  
Review

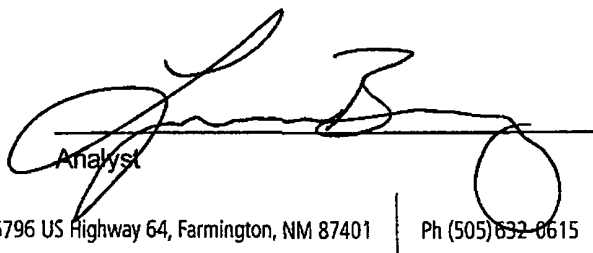
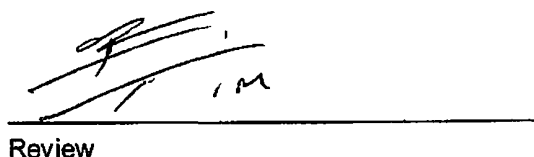
Client:	ConocoPhillips	Project #:	96052-1706
Sample ID:	Reserve Pit	Date Reported:	06/22/11
Lab ID#:	58603	Date Sampled:	06/21/11
Sample Matrix:	Soil	Date Received:	06/21/11
Preservative:	Cool	Date Analyzed:	06/22/11
Condition:	Intact	Chain of Custody:	11969

Parameter	Concentration (mg/Kg)
-----------	-----------------------

**Total Chloride****600**

Reference: U.S.E.P.A., 4500B, "Methods for Chemical Analysis of Water and Wastes", 1983.  
Standard Methods For The Examination of Water And Waste Water", 18th ed., 1992.

Comments: **S.J. 29-7 # Unit 84B**

  
\_\_\_\_\_  
Analyst  
\_\_\_\_\_  
Review

Submit To Appropriate District Office Two Copies District I 1625 N French Dr , Hobbs, NM 88240 District II 1301 W Grand Avenue, Artesia, NM 88210 District III 1000 Rio Brazos Rd , Aztec, NM 87410 District IV 1220 S St Francis Dr , Santa Fe, NM 87505	<b>State of New Mexico</b> <b>Energy, Minerals and Natural Resources</b>  <b>Oil Conservation Division</b> <b>1220 South St. Francis Dr.</b> <b>Santa Fe, NM 87505</b>	<b>Form C-105</b> July 17, 2008								
		1. WELL API NO. <b>30-039-30868</b>								
		2. Type of Lease <input type="checkbox"/> STATE <input type="checkbox"/> FEE <input checked="" type="checkbox"/> FED/INDIAN								
		3. State Oil & Gas Lease No. <b>SF - 078945</b>								
<b>WELL COMPLETION OR RECOMPLETION REPORT AND LOG</b>										
4. Reason for filing:  <input type="checkbox"/> <b>COMPLETION REPORT</b> (Fill in boxes #1 through #31 for State and Fee wells only)  <input checked="" type="checkbox"/> <b>C-144 CLOSURE ATTACHMENT</b> (Fill in boxes #1 through #9, #15 Date Rig Released and #32 and/or #33, attach this and the plat to the C-144 closure report in accordance with 19.15 17.13 K NMAC)		5. Lease Name or Unit Agreement Name <b>SAN JUAN 29-7 UNIT</b>  6. Well Number: <b>84B</b>								
7. Type of Completion. <input checked="" type="checkbox"/> NEW WELL <input type="checkbox"/> WORKOVER <input type="checkbox"/> DEEPENING <input type="checkbox"/> PLUGBACK <input type="checkbox"/> DIFFERENT RESERVOIR <input type="checkbox"/> OTHER										
8. Name of Operator <b>Burlington Resources Oil Gas Company, LP</b>		9. OGRID <b>14538</b>								
10. Address of Operator PO Box 4298, Farmington, NM 87499		11. Pool name or Wildcat								
12. Location	Unit Ltr	Section	Township	Range	Lot	Feet from the	N/S Line	Feet from the	E/W Line	County
Surface:										
BH:										
13. Date Spudded	14. Date T.D. Reached	15. Date Rig Released <b>3/17/2011</b>		16. Date Completed (Ready to Produce)			17. Elevations (DF and RKB, RT, GR, etc )			
18. Total Measured Depth of Well		19. Plug Back Measured Depth		20. Was Directional Survey Made?			21. Type Electric and Other Logs Run			
22. Producing Interval(s), of this completion - Top, Bottom, Name										
<b>23. CASING RECORD (Report all strings set in well)</b>										
CASING SIZE		WEIGHT LB./FT.		DEPTH SET		HOLE SIZE		CEMENTING RECORD		AMOUNT PULLED
24. LINER RECORD						25. TUBING RECORD				
SIZE	TOP	BOTTOM	SACKS CEMENT	SCREEN		SIZE	DEPTH SET	PACKER SET		
26. Perforation record (interval, size, and number)						27. ACID, SHOT, FRACTURE, CEMENT, SQUEEZE, ETC.				
						DEPTH INTERVAL		AMOUNT AND KIND MATERIAL USED		
<b>28. PRODUCTION</b>										
Date First Production		Production Method ( <i>Flowing, gas lift, pumping - Size and type pump</i> )					Well Status ( <i>Prod or Shut-in</i> )			
Date of Test	Hours Tested	Choke Size	Prod'n For Test Period	Oil - Bbl	Gas - MCF	Water - Bbl	Gas - Oil Ratio			
Flow Tubing Press	Casing Pressure	Calculated 24-Hour Rate	Oil - Bbl	Gas - MCF	Water - Bbl	Oil Gravity - API - ( <i>Corr.</i> )				
29. Disposition of Gas ( <i>Sold, used for fuel, vented, etc.</i> )							30. Test Witnessed By			
31. List Attachments										
32. If a temporary pit was used at the well, attach a plat with the location of the temporary pit										
33. If an on-site burial was used at the well, report the exact location of the on-site burial:										
N/A DIG & HAUL                      Latitude    °N    Longitude    °W    NAD <input type="checkbox"/> 1927 <input type="checkbox"/> 1983										
I hereby certify that the information shown on both sides of this form is true and complete to the best of my knowledge and belief Printed Signature                      Name Jamie Goodwin    Title: Regulatory Tech.    Date: 11/22/2011  E-mail Address jamie.l.goodwin@conocophillips.com										



# ConocoPhillips

## Pit Closure Form:

Date: 8/3/11

Well Name: SJ 29-7 848

Footages: 1020 FNL, 1045 FEL Unit Letter: A

Section: 1, T-29 -N, R-7 -W, County: R.A State: NM

Contractor Closing Pit: Ritter

Dig & Haul

Construction Inspector: Norman Faver Date: 8/3/11

Inspector Signature: Norman Faver

Revised 11/4/10

Office Use Only:

Subtask \_\_\_\_\_

DSM \_\_\_\_\_

Folder \_\_\_\_\_

## Goodwin, Jamie L

---

**From:** Payne, Wendy F  
**Sent:** Tuesday, July 19, 2011 12:50 PM  
**To:** (Brandon.Powell@state.nm.us); GRP:SJBU Regulatory; Eli (Cimarron) (eliv@qwestoffice.net); James (Cimarron) (jwood@cimarronsvc.com); Mark Kelly; Randy McKee; Robert Switzer; Sherrie Landon; Bassing, Kendal R.; Berenz (mxberenz@yahoo.com); Chavez Darrell (dchavez0330@yahoo.com); Crawford, Lea A; Elmer Perry; Faver Norman; Fred Martinez; Jared Chavez; Lowe, Terry; McDonald Johnny (jr\_mcdonald@msn.com); Payne, Wendy F; Smith, Mike W; Spearman, Bobby E; Steve McGlasson; Tally, Ethel; Becker, Joey W; Bowker, Terry D; Frost, Ryan M; Goosey, Paul P; Gordon Chenault; Green, Cary J; GRP:SJBU Production Leads; Hockett, Christy R; Johnson, Kirk L; Bassing, Kendal R.; Kennedy, Jim R; Lopez, Richard A; Nelson, Garry D; O'Nan, Mike J.; Peace, James T; Pierce, Richard M; Poulson, Mark E; Schaaphok, Bill, Smith, Randall O; Souther, Tappan G; Spearman, Bobby E; Stamets, Steve A; Thacker, LARRY; Thibodeaux, Gordon A; Work, Jim A; Corey Alfandre; 'isaiah@crossfire-llc.com'; Jerid Cabot (jerid@crossfire-llc.com); Blair, Maxwell O; Blakley, Mac; Farrell, Juanita R; Gillette, Steven L (PAC); Hines, Derek J; Maxwell, Mary Alice; McWilliams, Peggy L; Saiz, Kooper (Finney Land Co.); Seabolt, Elmo F; Thayer, Ashley A; Thompson, Trey E (Finney Land Co.)  
**Cc:** 'JDRITT@aol.com'  
**Subject:** Reclamation Notice: San Juan 29-7 Unit 84B (Area 7 \* Run 707)  
**Importance:** High  
**Attachments:** San Juan 29-7 Unit 84B.pdf

JD Ritter Construction will move a tractor to the **San Juan 29-7 Unit 84B** to start the reclamation process on Monday, July 25, 2011. Please contact Norm Faver (320-0670) if you have questions or need further assistance. **This is a full Dig and Haul of the pit.**



San Juan 29-7 Unit  
84B.pdf (39...

Burlington Resources Well - Network # 10293796 - Activity Code D250 (reclamation) & D260 (pit closure - **DIG & HAUL**) -  
PO:Kaitlw  
Rio Arriba County, NM

### **San Juan 29-7 Unit 84B - BLM surface/BLM minerals**

Onsited: Mike Flaniken 9-8-09  
Twin: San Juan 29-7 Unit 84 (existing)  
1020' FNL, 1045' FEL  
Sec. 1, T29N, R7W  
Unit letter " A "  
BH:SWNE, Sec. 1, T29N, R7W  
Lease # SF-078945  
Latitude: 36° 45' 33" N (NAD 83)  
Longitude: 107° 31' 01" W (NAD 83)  
Elevation: 6834'  
Total Acres Disturbed: 3.03 acres  
Access Road: n/a  
API # 30-039-30868  
Within City Limits: NO  
Pit Lined: **YES**

**NOTE: Arch Monitoring is NOT required on this location.**

**Wendy Payne**

**ConocoPhillips-SJBU**

**505-326-9533**

*Wendy.F.Payne@conocophillips.com*

## Reclamation Form:

Seeding Date: 8/19/2011

**LONGITUDE:** 111° 11'

**Pit Manifold removed** \_\_\_\_\_ **(DATE)**

Construction Inspector: Norman Faver Date: 9/22/2011

Inspector Signature: 

**Office Use Only:**  
Subtask \_\_\_\_\_  
DSM \_\_\_\_\_  
Folder \_\_\_\_\_  
Pictures \_\_\_\_\_  
Revised 11/4/10

# **BURLINGTON**

## **RESOURCES**

**SAN JUAN 29-7 UNIT #84B**

**LATITUDE 36° 45 MIN 33 SEC N (NAD83)**

**LONGITUDE 107° 31 MIN 01 SEC W (NAD 83)**

**UNIT A SEC 1 T29N R07W**

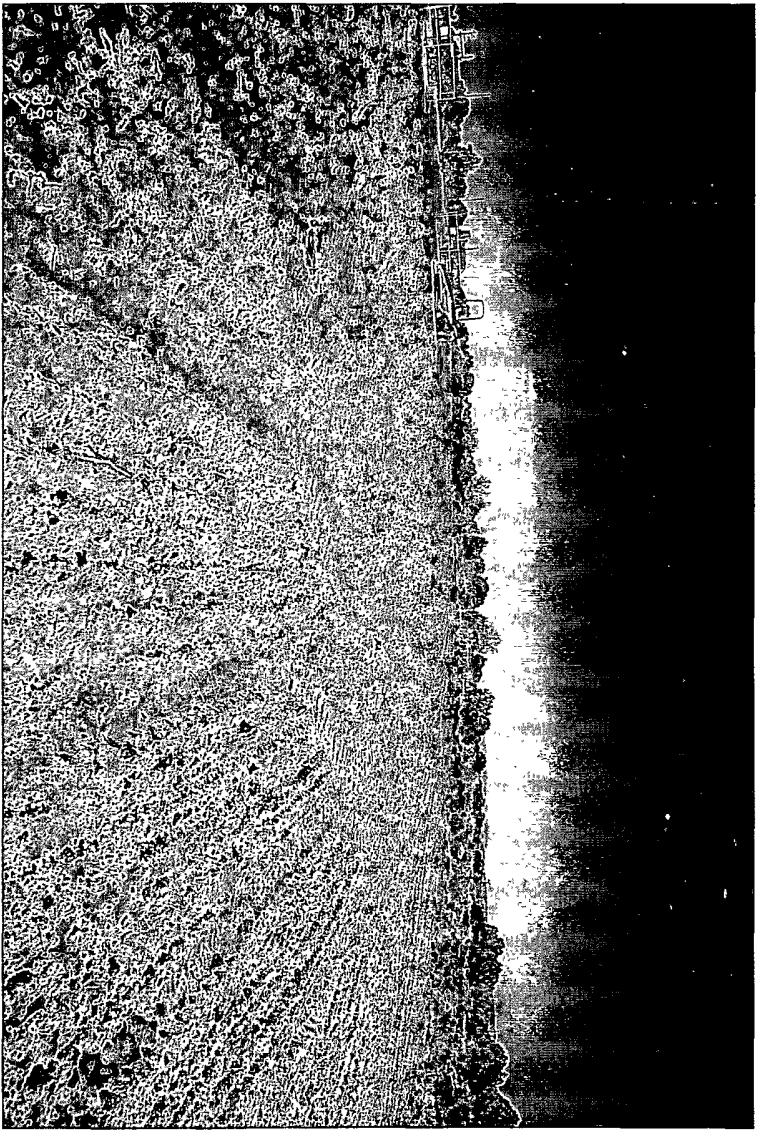
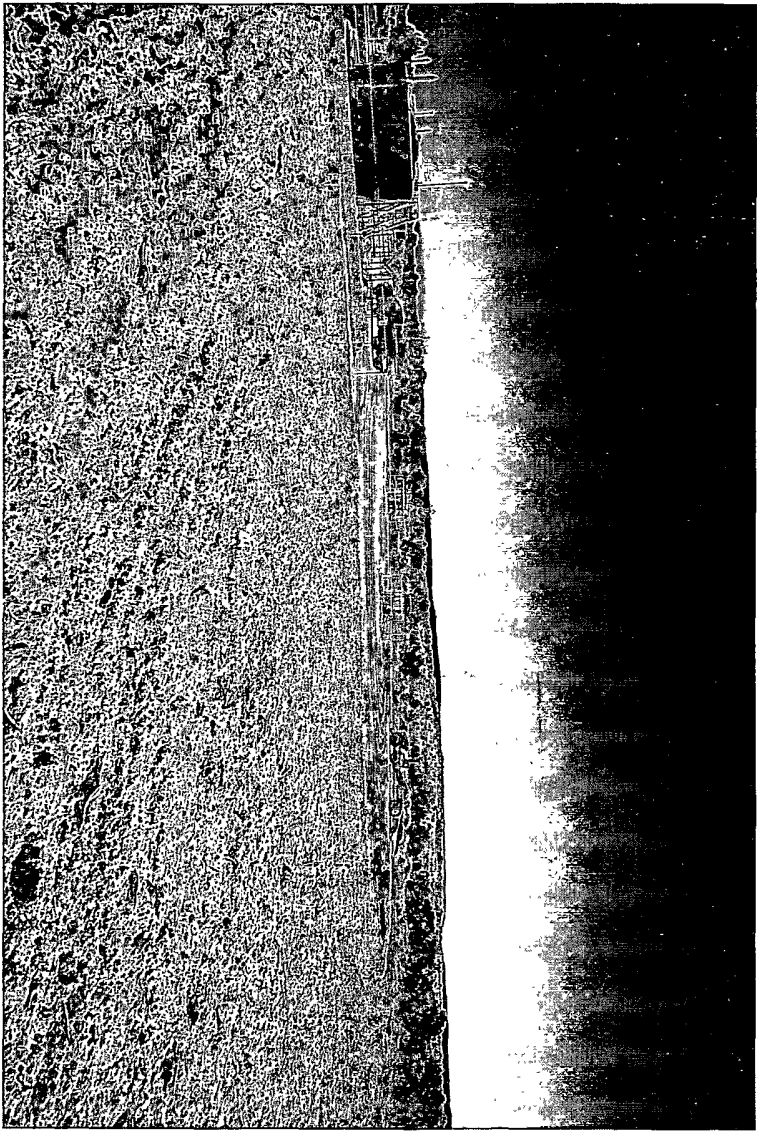
**BH: SWNE SEC 1 T29N R07W**

**1020' FNL 1045' FEL / API#30-039-30868**

**LEASE# SF-078945 ELEV. 6834'**

**RIO ARRIBA COUNTY, NEW MEXICO**

**EMERGENCY CONTACT: 1-505-324-5170**



WELL NAME: San Juan 29-7 Unit 84B		OPEN PIT INSPECTION FORM								ConocoPhillips	
INSPECTOR		Fred Mtz	Fred Mtz	Fred Mtz	Fred Mtz	Fred Mtz	Fred Mtz	Fred Mtz	Fred Mtz	Fred Mtz	Fred Mtz
DATE		03/01/11	03/09/11	03/16/11	03/22/11	03/29/11	04/05/11	04/12/11	05/10/11	05/17/11	
*Please request for pit extension after 26 weeks		Week 1	Week 2	Week 3	Week 4	Week 5	Week 6	Week 7	Week 8	Week 9	
PIT STATUS		<input type="checkbox"/> Drilled <input type="checkbox"/> Completed <input type="checkbox"/> Clean-Up	<input type="checkbox"/> Drilled <input type="checkbox"/> Completed <input type="checkbox"/> Clean-Up	<input type="checkbox"/> Drilled <input type="checkbox"/> Completed <input type="checkbox"/> Clean-Up	<input type="checkbox"/> Drilled <input type="checkbox"/> Completed <input type="checkbox"/> Clean-Up	<input checked="" type="checkbox"/> Drilled <input type="checkbox"/> Completed <input type="checkbox"/> Clean-Up	<input checked="" type="checkbox"/> Drilled <input type="checkbox"/> Completed <input type="checkbox"/> Clean-Up	<input checked="" type="checkbox"/> Drilled <input type="checkbox"/> Completed <input type="checkbox"/> Clean-Up	<input checked="" type="checkbox"/> Drilled <input type="checkbox"/> Completed <input type="checkbox"/> Clean-Up	<input checked="" type="checkbox"/> Drilled <input type="checkbox"/> Completed <input type="checkbox"/> Clean-Up	<input checked="" type="checkbox"/> Drilled <input type="checkbox"/> Completed <input type="checkbox"/> Clean-Up
LOCATION	Is the location marked with the proper flagging? (Const. Zone, poles, pipelines, etc.)	<input type="checkbox"/> Yes <input type="checkbox"/> No	<input type="checkbox"/> Yes <input type="checkbox"/> No	<input type="checkbox"/> Yes <input type="checkbox"/> No	<input checked="" type="checkbox"/> Yes <input type="checkbox"/> No	<input checked="" type="checkbox"/> Yes <input type="checkbox"/> No	<input checked="" type="checkbox"/> Yes <input type="checkbox"/> No	<input checked="" type="checkbox"/> Yes <input type="checkbox"/> No	<input checked="" type="checkbox"/> Yes <input type="checkbox"/> No	<input checked="" type="checkbox"/> Yes <input type="checkbox"/> No	<input checked="" type="checkbox"/> Yes <input type="checkbox"/> No
	Is the temporary well sign on location and visible from access road?	<input type="checkbox"/> Yes <input type="checkbox"/> No	<input type="checkbox"/> Yes <input type="checkbox"/> No	<input type="checkbox"/> Yes <input type="checkbox"/> No	<input checked="" type="checkbox"/> Yes <input type="checkbox"/> No	<input checked="" type="checkbox"/> Yes <input type="checkbox"/> No	<input checked="" type="checkbox"/> Yes <input type="checkbox"/> No	<input checked="" type="checkbox"/> Yes <input type="checkbox"/> No	<input checked="" type="checkbox"/> Yes <input type="checkbox"/> No	<input checked="" type="checkbox"/> Yes <input type="checkbox"/> No	<input checked="" type="checkbox"/> Yes <input type="checkbox"/> No
ENVIRONMENTAL COMPLIANCE	Is the access road in good driving condition? (deep ruts, bladed)	<input type="checkbox"/> Yes <input type="checkbox"/> No	<input type="checkbox"/> Yes <input type="checkbox"/> No	<input type="checkbox"/> Yes <input type="checkbox"/> No	<input checked="" type="checkbox"/> Yes <input type="checkbox"/> No	<input checked="" type="checkbox"/> Yes <input type="checkbox"/> No	<input checked="" type="checkbox"/> Yes <input type="checkbox"/> No	<input checked="" type="checkbox"/> Yes <input type="checkbox"/> No	<input checked="" type="checkbox"/> Yes <input type="checkbox"/> No	<input checked="" type="checkbox"/> Yes <input type="checkbox"/> No	<input checked="" type="checkbox"/> Yes <input type="checkbox"/> No
	Are the culverts free from debris or any object preventing flow?	<input type="checkbox"/> Yes <input type="checkbox"/> No	<input type="checkbox"/> Yes <input type="checkbox"/> No	<input type="checkbox"/> Yes <input type="checkbox"/> No	<input checked="" type="checkbox"/> Yes <input type="checkbox"/> No	<input checked="" type="checkbox"/> Yes <input type="checkbox"/> No	<input checked="" type="checkbox"/> Yes <input type="checkbox"/> No	<input checked="" type="checkbox"/> Yes <input type="checkbox"/> No	<input checked="" type="checkbox"/> Yes <input type="checkbox"/> No	<input checked="" type="checkbox"/> Yes <input type="checkbox"/> No	<input checked="" type="checkbox"/> Yes <input type="checkbox"/> No
	Is the top of the location bladed and in good operating condition?	<input type="checkbox"/> Yes <input type="checkbox"/> No	<input type="checkbox"/> Yes <input type="checkbox"/> No	<input type="checkbox"/> Yes <input type="checkbox"/> No	<input checked="" type="checkbox"/> Yes <input type="checkbox"/> No	<input checked="" type="checkbox"/> Yes <input type="checkbox"/> No	<input checked="" type="checkbox"/> Yes <input type="checkbox"/> No	<input checked="" type="checkbox"/> Yes <input type="checkbox"/> No	<input checked="" type="checkbox"/> Yes <input type="checkbox"/> No	<input checked="" type="checkbox"/> Yes <input type="checkbox"/> No	<input checked="" type="checkbox"/> Yes <input type="checkbox"/> No
	Is the fence stock-proof? (fences tight, barbed wire, fence clips in place)	<input type="checkbox"/> Yes <input type="checkbox"/> No	<input type="checkbox"/> Yes <input type="checkbox"/> No	<input type="checkbox"/> Yes <input type="checkbox"/> No	<input checked="" type="checkbox"/> Yes <input type="checkbox"/> No	<input checked="" type="checkbox"/> Yes <input type="checkbox"/> No	<input checked="" type="checkbox"/> Yes <input type="checkbox"/> No	<input checked="" type="checkbox"/> Yes <input type="checkbox"/> No	<input checked="" type="checkbox"/> Yes <input type="checkbox"/> No	<input checked="" type="checkbox"/> Yes <input type="checkbox"/> No	<input checked="" type="checkbox"/> Yes <input type="checkbox"/> No
	Is the pit liner in good operating condition? (no tears, up-roofing corners, etc.)	<input type="checkbox"/> Yes <input type="checkbox"/> No	<input type="checkbox"/> Yes <input type="checkbox"/> No	<input type="checkbox"/> Yes <input type="checkbox"/> No	<input checked="" type="checkbox"/> Yes <input type="checkbox"/> No	<input checked="" type="checkbox"/> Yes <input type="checkbox"/> No	<input checked="" type="checkbox"/> Yes <input type="checkbox"/> No	<input checked="" type="checkbox"/> Yes <input type="checkbox"/> No	<input checked="" type="checkbox"/> Yes <input type="checkbox"/> No	<input checked="" type="checkbox"/> Yes <input type="checkbox"/> No	<input checked="" type="checkbox"/> Yes <input type="checkbox"/> No
	Is the the location free from trash, oil stains and other materials? (cables, pipe threads, etc.)	<input type="checkbox"/> Yes <input type="checkbox"/> No	<input type="checkbox"/> Yes <input type="checkbox"/> No	<input type="checkbox"/> Yes <input type="checkbox"/> No	<input checked="" type="checkbox"/> Yes <input type="checkbox"/> No	<input type="checkbox"/> Yes <input checked="" type="checkbox"/> No	<input checked="" type="checkbox"/> Yes <input type="checkbox"/> No	<input checked="" type="checkbox"/> Yes <input type="checkbox"/> No	<input checked="" type="checkbox"/> Yes <input type="checkbox"/> No	<input checked="" type="checkbox"/> Yes <input type="checkbox"/> No	<input checked="" type="checkbox"/> Yes <input type="checkbox"/> No
	Does the pit contain two feet of free board? (check the water levels)	<input type="checkbox"/> Yes <input type="checkbox"/> No	<input type="checkbox"/> Yes <input type="checkbox"/> No	<input type="checkbox"/> Yes <input type="checkbox"/> No	<input checked="" type="checkbox"/> Yes <input type="checkbox"/> No	<input checked="" type="checkbox"/> Yes <input type="checkbox"/> No	<input checked="" type="checkbox"/> Yes <input type="checkbox"/> No	<input checked="" type="checkbox"/> Yes <input type="checkbox"/> No	<input checked="" type="checkbox"/> Yes <input type="checkbox"/> No	<input checked="" type="checkbox"/> Yes <input type="checkbox"/> No	<input checked="" type="checkbox"/> Yes <input type="checkbox"/> No
	Is there any standing water on the blow pit?	<input type="checkbox"/> Yes <input type="checkbox"/> No	<input type="checkbox"/> Yes <input type="checkbox"/> No	<input type="checkbox"/> Yes <input type="checkbox"/> No	<input checked="" type="checkbox"/> Yes <input type="checkbox"/> No	<input checked="" type="checkbox"/> Yes <input type="checkbox"/> No	<input checked="" type="checkbox"/> Yes <input type="checkbox"/> No	<input checked="" type="checkbox"/> Yes <input type="checkbox"/> No	<input checked="" type="checkbox"/> Yes <input type="checkbox"/> No	<input checked="" type="checkbox"/> Yes <input type="checkbox"/> No	<input checked="" type="checkbox"/> Yes <input type="checkbox"/> No
	Are the pits free of trash and oil?	<input type="checkbox"/> Yes <input type="checkbox"/> No	<input type="checkbox"/> Yes <input type="checkbox"/> No	<input type="checkbox"/> Yes <input type="checkbox"/> No	<input checked="" type="checkbox"/> Yes <input type="checkbox"/> No	<input checked="" type="checkbox"/> Yes <input type="checkbox"/> No	<input checked="" type="checkbox"/> Yes <input type="checkbox"/> No	<input checked="" type="checkbox"/> Yes <input type="checkbox"/> No	<input checked="" type="checkbox"/> Yes <input type="checkbox"/> No	<input checked="" type="checkbox"/> Yes <input type="checkbox"/> No	<input checked="" type="checkbox"/> Yes <input type="checkbox"/> No
	Are there diversion ditches around the pits for natural drainage?	<input type="checkbox"/> Yes <input type="checkbox"/> No	<input type="checkbox"/> Yes <input type="checkbox"/> No	<input type="checkbox"/> Yes <input type="checkbox"/> No	<input checked="" type="checkbox"/> Yes <input type="checkbox"/> No	<input checked="" type="checkbox"/> Yes <input type="checkbox"/> No	<input checked="" type="checkbox"/> Yes <input type="checkbox"/> No	<input checked="" type="checkbox"/> Yes <input type="checkbox"/> No	<input checked="" type="checkbox"/> Yes <input type="checkbox"/> No	<input checked="" type="checkbox"/> Yes <input type="checkbox"/> No	<input checked="" type="checkbox"/> Yes <input type="checkbox"/> No
	Is there a Manifold on location?	<input type="checkbox"/> Yes <input type="checkbox"/> No	<input type="checkbox"/> Yes <input type="checkbox"/> No	<input type="checkbox"/> Yes <input type="checkbox"/> No	<input checked="" type="checkbox"/> Yes <input type="checkbox"/> No	<input checked="" type="checkbox"/> Yes <input type="checkbox"/> No	<input checked="" type="checkbox"/> Yes <input type="checkbox"/> No	<input checked="" type="checkbox"/> Yes <input type="checkbox"/> No	<input checked="" type="checkbox"/> Yes <input type="checkbox"/> No	<input checked="" type="checkbox"/> Yes <input type="checkbox"/> No	<input checked="" type="checkbox"/> Yes <input type="checkbox"/> No
Is the Manifold free of leaks? Are the hoses in good condition?	<input type="checkbox"/> Yes <input type="checkbox"/> No	<input type="checkbox"/> Yes <input type="checkbox"/> No	<input type="checkbox"/> Yes <input type="checkbox"/> No	<input checked="" type="checkbox"/> Yes <input type="checkbox"/> No	<input checked="" type="checkbox"/> Yes <input type="checkbox"/> No	<input checked="" type="checkbox"/> Yes <input type="checkbox"/> No	<input checked="" type="checkbox"/> Yes <input type="checkbox"/> No	<input checked="" type="checkbox"/> Yes <input type="checkbox"/> No	<input checked="" type="checkbox"/> Yes <input type="checkbox"/> No	<input checked="" type="checkbox"/> Yes <input type="checkbox"/> No	
OC	Was the OCD contacted?	<input type="checkbox"/> Yes <input type="checkbox"/> No	<input type="checkbox"/> Yes <input type="checkbox"/> No	<input type="checkbox"/> Yes <input type="checkbox"/> No	<input type="checkbox"/> Yes <input checked="" type="checkbox"/> No	<input type="checkbox"/> Yes <input checked="" type="checkbox"/> No	<input type="checkbox"/> Yes <input checked="" type="checkbox"/> No	<input type="checkbox"/> Yes <input checked="" type="checkbox"/> No	<input type="checkbox"/> Yes <input checked="" type="checkbox"/> No	<input type="checkbox"/> Yes <input checked="" type="checkbox"/> No	<input type="checkbox"/> Yes <input checked="" type="checkbox"/> No
	PICTURE TAKEN	<input type="checkbox"/> Yes <input type="checkbox"/> No	<input type="checkbox"/> Yes <input type="checkbox"/> No	<input type="checkbox"/> Yes <input type="checkbox"/> No	<input type="checkbox"/> Yes <input checked="" type="checkbox"/> No	<input type="checkbox"/> Yes <input checked="" type="checkbox"/> No	<input type="checkbox"/> Yes <input checked="" type="checkbox"/> No	<input type="checkbox"/> Yes <input checked="" type="checkbox"/> No	<input type="checkbox"/> Yes <input checked="" type="checkbox"/> No	<input type="checkbox"/> Yes <input checked="" type="checkbox"/> No	<input type="checkbox"/> Yes <input checked="" type="checkbox"/> No
	COMMENTS	Aztec 711 on location	Rig on location	Rig on location	Let crew no not to get to close to my fence when cutting ditches.	Contact Flint to fix fence; cleaned trashed out of pit	No repairs		no repairs	no repairs	

WELL NAME: San Juan 29-7 Unit 84B											
INSPECTOR		Fred Mtz	Fred Mtz	Fred Mtz	Fred Mtz	Fred Mtz	F.MTZ	Fred Mtz	Fred Mtz	Fred Mtz	
DATE		05/24/11	05/31/11	06/07/11	06/14/11	06/21/11	06/28/11	07/12/11	07/19/11		
*Please request for pit extension after 26 weeks		Week 10	Week 11	Week 12	Week 13	Week 14	Week 15	Week 16	Week 17	Week 18	
PIT STATUS		<input checked="" type="checkbox"/> Drilled <input type="checkbox"/> Completed <input type="checkbox"/> Clean-Up	<input checked="" type="checkbox"/> Drilled <input type="checkbox"/> Completed <input type="checkbox"/> Clean-Up	<input checked="" type="checkbox"/> Drilled <input checked="" type="checkbox"/> Completed <input type="checkbox"/> Clean-Up	<input checked="" type="checkbox"/> Drilled <input checked="" type="checkbox"/> Completed <input type="checkbox"/> Clean-Up	<input checked="" type="checkbox"/> Drilled <input checked="" type="checkbox"/> Completed <input type="checkbox"/> Clean-Up	<input checked="" type="checkbox"/> Drilled <input checked="" type="checkbox"/> Completed <input type="checkbox"/> Clean-Up	<input type="checkbox"/> Drilled <input type="checkbox"/> Completed <input type="checkbox"/> Clean-Up	<input checked="" type="checkbox"/> Drilled <input checked="" type="checkbox"/> Completed <input type="checkbox"/> Clean-Up	<input type="checkbox"/> Drilled <input type="checkbox"/> Completed <input type="checkbox"/> Clean-Up	<input type="checkbox"/> Drilled <input type="checkbox"/> Completed <input type="checkbox"/> Clean-Up
LOCATION	Is the location marked with the proper flagging? (Const. Zone, poles, pipelines, etc.)	<input type="checkbox"/> Yes <input type="checkbox"/> No	<input type="checkbox"/> Yes <input type="checkbox"/> No	<input checked="" type="checkbox"/> Yes <input type="checkbox"/> No	<input checked="" type="checkbox"/> Yes <input type="checkbox"/> No	<input checked="" type="checkbox"/> Yes <input type="checkbox"/> No	<input checked="" type="checkbox"/> Yes <input type="checkbox"/> No	<input checked="" type="checkbox"/> Yes <input type="checkbox"/> No	<input checked="" type="checkbox"/> Yes <input type="checkbox"/> No	<input type="checkbox"/> Yes <input type="checkbox"/> No	
	Is the temporary well sign on location and visible from access road?	<input type="checkbox"/> Yes <input type="checkbox"/> No	<input type="checkbox"/> Yes <input type="checkbox"/> No	<input checked="" type="checkbox"/> Yes <input type="checkbox"/> No	<input checked="" type="checkbox"/> Yes <input type="checkbox"/> No	<input checked="" type="checkbox"/> Yes <input type="checkbox"/> No	<input checked="" type="checkbox"/> Yes <input type="checkbox"/> No	<input checked="" type="checkbox"/> Yes <input type="checkbox"/> No	<input checked="" type="checkbox"/> Yes <input type="checkbox"/> No	<input type="checkbox"/> Yes <input type="checkbox"/> No	
ENVIRONMENTAL COMPLIANCE	Is the access road in good driving condition? (deep ruts, bladed)	<input type="checkbox"/> Yes <input type="checkbox"/> No	<input type="checkbox"/> Yes <input type="checkbox"/> No	<input checked="" type="checkbox"/> Yes <input type="checkbox"/> No	<input checked="" type="checkbox"/> Yes <input type="checkbox"/> No	<input checked="" type="checkbox"/> Yes <input type="checkbox"/> No	<input type="checkbox"/> Yes <input checked="" type="checkbox"/> No	<input type="checkbox"/> Yes <input checked="" type="checkbox"/> No	<input type="checkbox"/> Yes <input checked="" type="checkbox"/> No	<input type="checkbox"/> Yes <input type="checkbox"/> No	
	Are the culverts free from debris or any object preventing flow?	<input type="checkbox"/> Yes <input type="checkbox"/> No	<input type="checkbox"/> Yes <input type="checkbox"/> No	<input checked="" type="checkbox"/> Yes <input type="checkbox"/> No	<input checked="" type="checkbox"/> Yes <input type="checkbox"/> No	<input checked="" type="checkbox"/> Yes <input type="checkbox"/> No	<input type="checkbox"/> Yes <input type="checkbox"/> No	<input checked="" type="checkbox"/> Yes <input type="checkbox"/> No	<input checked="" type="checkbox"/> Yes <input type="checkbox"/> No	<input type="checkbox"/> Yes <input type="checkbox"/> No	
	Is the top of the location bladed and in good operating condition?	<input type="checkbox"/> Yes <input type="checkbox"/> No	<input type="checkbox"/> Yes <input type="checkbox"/> No	<input checked="" type="checkbox"/> Yes <input type="checkbox"/> No	<input checked="" type="checkbox"/> Yes <input type="checkbox"/> No	<input checked="" type="checkbox"/> Yes <input type="checkbox"/> No	<input checked="" type="checkbox"/> Yes <input type="checkbox"/> No	<input checked="" type="checkbox"/> Yes <input type="checkbox"/> No	<input checked="" type="checkbox"/> Yes <input type="checkbox"/> No	<input type="checkbox"/> Yes <input type="checkbox"/> No	
	Is the fence stock-proof? (fences tight, barbed wire, fence clips in place?)	<input type="checkbox"/> Yes <input type="checkbox"/> No	<input type="checkbox"/> Yes <input type="checkbox"/> No	<input checked="" type="checkbox"/> Yes <input type="checkbox"/> No	<input checked="" type="checkbox"/> Yes <input type="checkbox"/> No	<input checked="" type="checkbox"/> Yes <input type="checkbox"/> No	<input checked="" type="checkbox"/> Yes <input type="checkbox"/> No	<input checked="" type="checkbox"/> Yes <input type="checkbox"/> No	<input checked="" type="checkbox"/> Yes <input type="checkbox"/> No	<input type="checkbox"/> Yes <input type="checkbox"/> No	
	Is the pit liner in good operating condition? (no tears, up-rooting corners, etc.)	<input type="checkbox"/> Yes <input type="checkbox"/> No	<input type="checkbox"/> Yes <input type="checkbox"/> No	<input checked="" type="checkbox"/> Yes <input type="checkbox"/> No	<input checked="" type="checkbox"/> Yes <input type="checkbox"/> No	<input checked="" type="checkbox"/> Yes <input type="checkbox"/> No	<input checked="" type="checkbox"/> Yes <input type="checkbox"/> No	<input checked="" type="checkbox"/> Yes <input type="checkbox"/> No	<input checked="" type="checkbox"/> Yes <input type="checkbox"/> No	<input type="checkbox"/> Yes <input type="checkbox"/> No	
	Is the the location free from trash, oil stains and other materials? (cables, pipe threads, etc.)	<input type="checkbox"/> Yes <input type="checkbox"/> No	<input type="checkbox"/> Yes <input type="checkbox"/> No	<input checked="" type="checkbox"/> Yes <input type="checkbox"/> No	<input checked="" type="checkbox"/> Yes <input type="checkbox"/> No	<input checked="" type="checkbox"/> Yes <input type="checkbox"/> No	<input checked="" type="checkbox"/> Yes <input type="checkbox"/> No	<input checked="" type="checkbox"/> Yes <input type="checkbox"/> No	<input checked="" type="checkbox"/> Yes <input type="checkbox"/> No	<input type="checkbox"/> Yes <input type="checkbox"/> No	
	Does the pit contain two feet of free board? (check the water levels)	<input type="checkbox"/> Yes <input type="checkbox"/> No	<input type="checkbox"/> Yes <input type="checkbox"/> No	<input checked="" type="checkbox"/> Yes <input type="checkbox"/> No	<input checked="" type="checkbox"/> Yes <input type="checkbox"/> No	<input checked="" type="checkbox"/> Yes <input type="checkbox"/> No	<input checked="" type="checkbox"/> Yes <input type="checkbox"/> No	<input type="checkbox"/> Yes <input checked="" type="checkbox"/> No	<input checked="" type="checkbox"/> Yes <input type="checkbox"/> No	<input type="checkbox"/> Yes <input type="checkbox"/> No	
	Is there any standing water on the blow pit?	<input type="checkbox"/> Yes <input type="checkbox"/> No	<input type="checkbox"/> Yes <input type="checkbox"/> No	<input type="checkbox"/> Yes <input checked="" type="checkbox"/> No	<input type="checkbox"/> Yes <input checked="" type="checkbox"/> No	<input type="checkbox"/> Yes <input checked="" type="checkbox"/> No	<input type="checkbox"/> Yes <input checked="" type="checkbox"/> No	<input checked="" type="checkbox"/> Yes <input type="checkbox"/> No	<input type="checkbox"/> Yes <input checked="" type="checkbox"/> No	<input type="checkbox"/> Yes <input type="checkbox"/> No	
	Are the pits free of trash and oil?	<input type="checkbox"/> Yes <input type="checkbox"/> No	<input type="checkbox"/> Yes <input type="checkbox"/> No	<input checked="" type="checkbox"/> Yes <input type="checkbox"/> No	<input checked="" type="checkbox"/> Yes <input type="checkbox"/> No	<input checked="" type="checkbox"/> Yes <input type="checkbox"/> No	<input checked="" type="checkbox"/> Yes <input type="checkbox"/> No	<input checked="" type="checkbox"/> Yes <input type="checkbox"/> No	<input checked="" type="checkbox"/> Yes <input type="checkbox"/> No	<input type="checkbox"/> Yes <input type="checkbox"/> No	
	Are there diversion ditches around the pits for natural drainage?	<input type="checkbox"/> Yes <input type="checkbox"/> No	<input type="checkbox"/> Yes <input type="checkbox"/> No	<input checked="" type="checkbox"/> Yes <input type="checkbox"/> No	<input checked="" type="checkbox"/> Yes <input type="checkbox"/> No	<input checked="" type="checkbox"/> Yes <input type="checkbox"/> No	<input checked="" type="checkbox"/> Yes <input type="checkbox"/> No	<input checked="" type="checkbox"/> Yes <input type="checkbox"/> No	<input checked="" type="checkbox"/> Yes <input type="checkbox"/> No	<input type="checkbox"/> Yes <input type="checkbox"/> No	
	Is there a Manifold on location?	<input type="checkbox"/> Yes <input type="checkbox"/> No	<input type="checkbox"/> Yes <input type="checkbox"/> No	<input checked="" type="checkbox"/> Yes <input type="checkbox"/> No	<input checked="" type="checkbox"/> Yes <input type="checkbox"/> No	<input checked="" type="checkbox"/> Yes <input type="checkbox"/> No	<input checked="" type="checkbox"/> Yes <input type="checkbox"/> No	<input checked="" type="checkbox"/> Yes <input type="checkbox"/> No	<input checked="" type="checkbox"/> Yes <input type="checkbox"/> No	<input type="checkbox"/> Yes <input type="checkbox"/> No	
Is the Manifold free of leaks? Are the hoses in good condition?	<input type="checkbox"/> Yes <input type="checkbox"/> No	<input type="checkbox"/> Yes <input type="checkbox"/> No	<input checked="" type="checkbox"/> Yes <input type="checkbox"/> No	<input checked="" type="checkbox"/> Yes <input type="checkbox"/> No	<input checked="" type="checkbox"/> Yes <input type="checkbox"/> No	<input checked="" type="checkbox"/> Yes <input type="checkbox"/> No	<input checked="" type="checkbox"/> Yes <input type="checkbox"/> No	<input checked="" type="checkbox"/> Yes <input type="checkbox"/> No	<input type="checkbox"/> Yes <input type="checkbox"/> No		
OC	Was the OCD contacted?	<input type="checkbox"/> Yes <input checked="" type="checkbox"/> No	<input type="checkbox"/> Yes <input checked="" type="checkbox"/> No	<input type="checkbox"/> Yes <input checked="" type="checkbox"/> No	<input type="checkbox"/> Yes <input checked="" type="checkbox"/> No	<input type="checkbox"/> Yes <input checked="" type="checkbox"/> No	<input type="checkbox"/> Yes <input checked="" type="checkbox"/> No	<input type="checkbox"/> Yes <input checked="" type="checkbox"/> No	<input type="checkbox"/> Yes <input checked="" type="checkbox"/> No	<input type="checkbox"/> Yes <input type="checkbox"/> No	
	PICTURE TAKEN	<input type="checkbox"/> Yes <input checked="" type="checkbox"/> No	<input type="checkbox"/> Yes <input checked="" type="checkbox"/> No	<input type="checkbox"/> Yes <input checked="" type="checkbox"/> No	<input type="checkbox"/> Yes <input checked="" type="checkbox"/> No	<input type="checkbox"/> Yes <input checked="" type="checkbox"/> No	<input type="checkbox"/> Yes <input checked="" type="checkbox"/> No	<input type="checkbox"/> Yes <input checked="" type="checkbox"/> No	<input type="checkbox"/> Yes <input checked="" type="checkbox"/> No	<input type="checkbox"/> Yes <input type="checkbox"/> No	
	COMMENTS	ing on location	rig on location	no repairs	no repairs	Test Pit No Repairs	NO REPAIRS	Road needs bladed	road needs bladed	being reclaimed	