

UNITED STATES
DEPARTMENT OF THE INTERIOR
BUREAU OF LAND MANAGEMENT

RECEIVED
SUBMITTING
DUPLICATE

(See other instructions on
reverse side)

NOV 22 2011

FORM APPROVED
OMB NO. 1004-0137
Expires: February 28, 1995

WELL COMPLETION OR RECOMPLETION REPORT AND LOG

Farmington Field Office
Bureau of Land Management

1a	TYPE OF WELL	OIL WELL	<input checked="" type="checkbox"/> GAS WELL	DRY	OTHER		
b	TYPE OF COMPLETION	NEW WELL	WORKOVER	DEEPEN	PLUG BACK	DIFF RESVR	<input checked="" type="checkbox"/> OTHER - horizontal reentry
2	NAME OF OPERATOR					WILLIAMS PRODUCTION COMPANY	
3	ADDRESS AND TELEPHONE NO					P O Box 640, Aztec, NM 87410 (505) 333-1808	
4	LOCATION OF WELL (Report location clearly and in accordance with any State requirements)*					10. FIELD AND POOL, OR WILDCAT BASIN FRUITLAND COAL	
SURF: 807' FSL & 1969' FEL BHL: 2337' FSL & 361' FEL					11. SEC. T. R. M. OR BLOCK AND SURVEY OR AREA SEC 21 31N 6W		
					12. COUNTY OR	13. STATE	
					Rio Arriba	New Mexico	
15. DATE SPUDDED 5/2/06	16. DATE T D REACHED existing	17. DATE COMPLETED (READY TO PRODUCE) 11/18/11	14. PERMIT NO	DATE ISSUED	19. ELEVATION CASINGHEAD		
20. TOTAL DEPTH. MD & TVD 5150' MD / 3224' TVD			18. ELEVATIONS (DK. RKB. RT. GR. ETC)* 6376' GR		21. IF MULTICOMP. HOW MANY		
24. PRODUCING INTERVAL(S), OF THIS COMPLETION - TOP, BOTTOM, NAME (MD AND TVD)* BASIN FRUITLAND COAL: 3142'-5142' MD			23. INTERVALS DRILLED BY		25. WAS DIRECTIONAL SURVEY MADE YES		
26. TYPE ELECTRIC AND OTHER LOGS RUN			27. WAS WELL CORED No		28. CASING REPORT (Report all strings set in well)		

CASING SIZE/GRADE	WEIGHT. LB./FT	DEPTH SET (MD)	HOLE SIZE	TOP OF CEMENT. CEMENTING RECORD	AMOUNT PULLED
9-5/8", J-55	36#	321'	12-1/4"	190 SX - SURFACE	22 bbls
7", J-55	23#	3041'	8-3/4"	550 SX - SURFACE	22 bbls
5 1/2", J-80	17#	3225'	6 1/4"		

29. LINER RECORD				30. TUBING RECORD			
SIZE	TOP (MD)	BOTTOM (MD)	SACKS CEMENT*	SCREEN (MD)	SIZE	DEPTH SET (MD)	PACKER SET (MD)
4 1/2"	2675'	5147'	0 SX		2-7/8", 6.5#, J-55	3239'	

31. PERFORATION RECORD (Interval, size, and number)	32. ACID, SHOT, FRACTURE, CEMENT SQUEEZE, ETC
Basin Fruitland Coal: 3142'-5142' (Pre-Perforated Liner, 28, 0.50" dia holes p/ft)	DEPTH INTERVAL (MD)
	3142'-5142'
	Well was not stimulated
	AMOUNT AND KIND OF MATERIAL USED
	RCVD NOV 29 '11
	OIL CONS. DIV.
	DIST. 8

33. PRODUCTION	
DATE OF FIRST PRODUCTION 9/21/06	PRODUCTION METHOD (Flowing, gas lift, pumping-size and type of pump)
DATE OF TEST	TESTED
CHOKE SIZE	PROD'N FOR TEST PERIOD
OIL - BBL	GAS - MCF
WATER - BBL	GAS-OIL RATIO
FLOW TBG PRESS	CASING PRESSURE
CALCULATED 24-HOUR RATE	OIL - BBL
GAS - MCF	WATER - BBL
OIL GRAVITY-API (CORR)	

34. DISPOSITION OF GAS (Sold, used for fuel, vented, etc) non flaring

35. LIST OF ATTACHMENTS SUMMARY OF POROUS ZONES, WELLBORE DIAGRAM, Directional EOW report

36. I hereby certify that the foregoing and attached information is complete and correct as determined from all available records

ACCEPTED FOR RECORD

SIGNED

Heather Riley

TITLE Heather Riley

DATE 11/22/11

NOV 23 2011

NMOCD
A

FARMINGTON FIELD OFFICE
BY Se

ROSA UNIT #260A- ReEntry BASIN FRUITLAND COAL

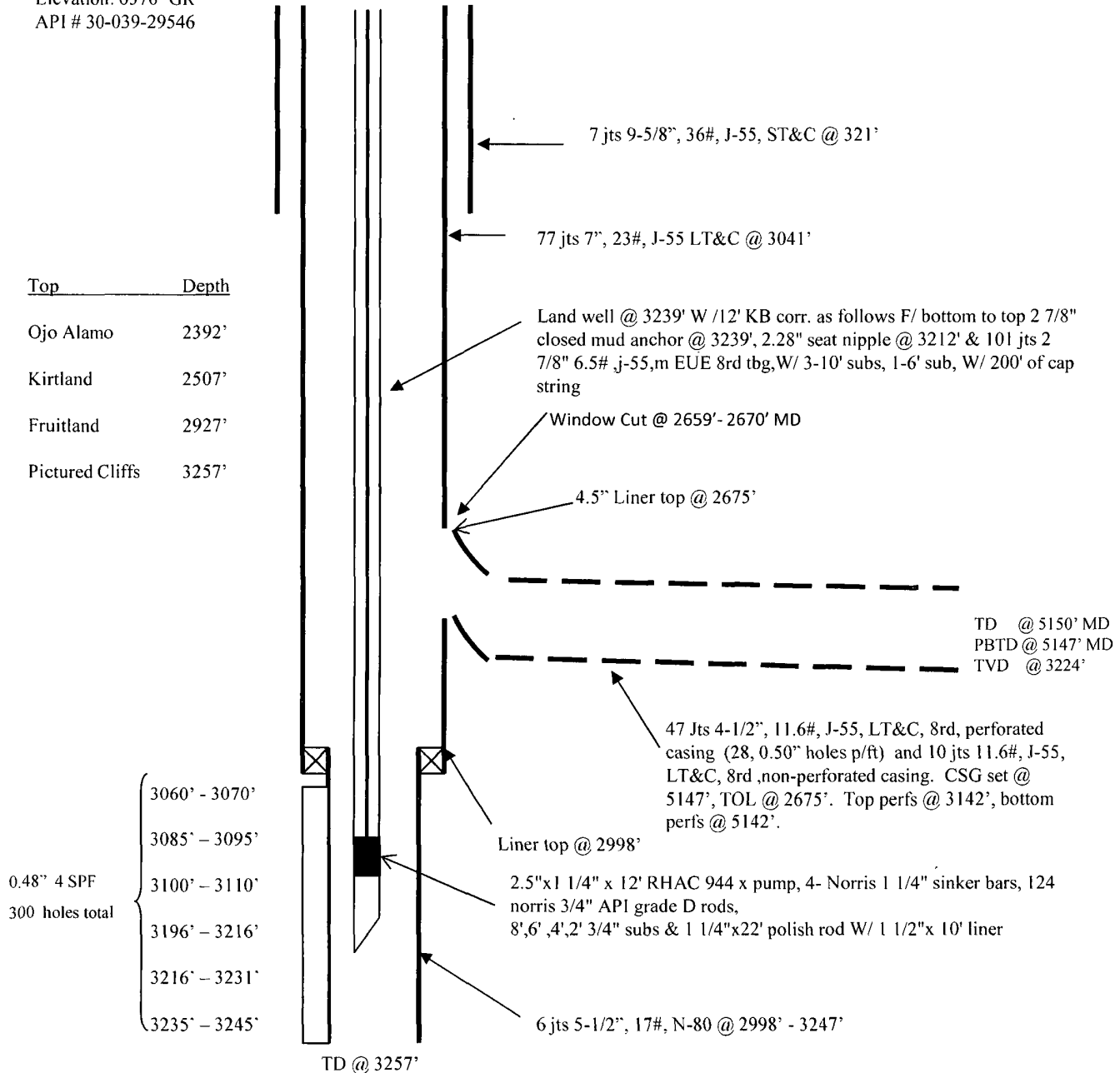
Location:

SHL 807' FSL & 1969' FEL
NE/4 SE/4 Sec 21(I), T31N, R06W
BHL: 2337' FSL & 361' FEL
NE/4 SE/4 Sec 21 (I), T31N, R-06W
Rio Arriba, New Mexico

Spud: 05/02/06
Completed: 07/27/06
1st Delivery: 09/21/06
Horiz re entry: 11/18/11

Elevation: 6376' GR
API # 30-039-29546

Pumping Unit
American 80-119-64



Open hole from 6-1/4" to
9-1/2" from 3052' to
3257'

LH 11/21/11

Hole Size	Casing	Cement	Volume	Top of Cmt
12-1/4"	9-5/8", 36#	190 sx	268 cu. ft.	Surface
8-3/4"	7", 23#	550 sx	1125 cu. ft.	Surface
6-1/4"	4-1/2", 11.6#	Did Not Cmt		