

UNITED STATES  
DEPARTMENT OF THE INTERIOR  
BUREAU OF LAND MANAGEMENT

RCVD NOV 29 '11

Sundry Notices and Reports on Wells

OIL CONS. DIV.

RECEIVED

NOV 21 2011

Farmington Field Office  
Bureau of Land Management

1. Type of Well  
GAS

2. Name of Operator  
**BURLINGTON**  
RESOURCES OIL & GAS COMPANY LP

3. Address & Phone No. of Operator  
PO Box 4289, Farmington, NM 87499 (505) 326-9700

4. Location of Well, Footage, Sec., T, R, M  
Unit I (NESE), 1850' FSL & 790' FEL, Section 19, T28N, R9W, NMPM

5. Lease Number  
NM-01772-A
6. If Indian, All. or  
Tribe **MT. 3**
7. Unit Agreement Name
8. Well Name & Number  
Reid 21E
9. API Well No.  
30-045-25291
10. Field and Pool  
Otero Chacra/Basin DK
11. County and State  
San Juan, NM

12. CHECK APPROPRIATE BOX TO INDICATE NATURE OF NOTICE, REPORT, OTHER DATA

Type of Submission	Type of Action	
<input checked="" type="checkbox"/> Notice of Intent	<input checked="" type="checkbox"/> Abandonment	<input type="checkbox"/> Change of Plans
<input type="checkbox"/> Subsequent Report	<input type="checkbox"/> Recompletion	<input type="checkbox"/> New Construction
<input type="checkbox"/> Final Abandonment	<input type="checkbox"/> Plugging	<input type="checkbox"/> Non-Routine Fracturing
	<input type="checkbox"/> Casing Repair	<input type="checkbox"/> Water Shut off
	<input type="checkbox"/> Altering Casing	<input type="checkbox"/> Conversion to Injection

13. Describe Proposed or Completed Operations

Burlington Resources Oil & Gas Company, LP requests permission to P&A the subject well per the attached procedure, current and proposed wellbore schematic.

Notify NMOCD 24 hrs  
prior to beginning  
operations

14. I hereby certify that the foregoing is true and correct.

Signed Crystal Tafoya Crystal Tafoya Title: Staff Regulatory Technician Date 11/21/11

(This space for Federal or State Office use)

APPROVED BY Original Signed: Stephen Mason Title \_\_\_\_\_ Date NOV 22 2011

CONDITION OF APPROVAL, if any:

Title 18 U.S.C. Section 1001, makes it a crime for any person knowingly and willfully to make any department or agency of the United States any false, fictitious or fraudulent statements or representations as to any matter within its jurisdiction

NMOCD  
A

**ConocoPhillips**  
**REID 21E**  
**Expense - P&A**

Lat 36° 38' 42.792" N

Long 107° 49' 23.628" W

**PROCEDURE**

1. Hold pre-job safety meeting. Comply with all NMOCD, BLM, and COPC safety and environmental regulations. Test rig anchors prior to moving in rig.
2. MIRU work over rig. Check casing, tubing, and bradenhead pressures and record them in Wellview.
3. RU blow lines from casing valves and begin blowing down casing pressure. Kill well with water, as necessary, and at least pump tubing capacity of water down tubing.
4. ND wellhead and NU BOPE. Function test BOP. PU and remove tubing hanger.
5. TOOH with tubing/rods (per pertinent data sheet). LD tubing bailer (if applicable).

Tubing (Short):	Yes	Size:	1.9	Length:	3188
Tubing (Long):	Yes	Size:	1.9	Length:	6540
Packer:	Yes	Size:	N/A	Depth:	3261

If this well has rods or a packer, then modify the work sequence in step #2 as appropriate. Round trip casing scraper through deepest perforation or as deep as possible. **To unset packer, "set at 5,000# on packer, torque to the right & pick up."**

**Packer should come free. If packer is stuck, pull weight above packer & 20,000# shear pin to release packer" (per completion report). LD 1-1/2" tbg.**

**All cement volumes use 100% excess outside pipe and 50' excess inside pipe. The stabilizing wellbore fluid will be 8.3 ppg, sufficient to balance all exposed formation pressures. All cement will be ASTM Type II mixed at 15.6 ppg with a 1.18 cf/sk yield.**

**6. Plug 1 (Dakota, 6292-6392', 17 Sacks Class B Cement)**

RIH w/ CIBP and set @ 6,392'. TIH w/ 2-3/8" tbg. Pressure test tubing to 1000 psi. Load casing with water and attempt to establish circulation. Mix 17 sx Class B cement and spot a balanced plug inside the casing to isolate the Dakota formation top. POOH.

**7. Plug 2 (Gallup, 5472-5572', 47 Sacks Class B Cement)**

Perforate 3 HSC holes at 5,572'. Set a 5-1/2" cement retainer at 5,522'. Establish injection rate into squeeze holes. Mix 47 sx Class B cement. Sqz 30 sx Class B cement into HSC holes and leave 17 sx cement inside casing to isolate the Gallup formation top. POOH.

**8. Plug 3 (Mancos, 4700-4800', 17 Sacks Class B Cement)**

RIH w/ tbg. Mix 17 sx Class B cement and spot a balance plug inside casing to isolate the Mancos top. PUH.

3550 3650

**9. Plug 4 (Mesaverde, 3650-3750', 17 Sacks Class B Cement)**

RIH w/ tbg. Mix 17 sx Class B cement and spot a balance plug inside casing to isolate the Mesaverde top. PUH.

**10. Plug 5 (Chacra, 2890-2990', 17 Sacks Class B Cement)**

RIH and set CIBP @ 2,990'. Pressure test casing. Mix 17 sx Class B cement and spot a balance plug inside casing to isolate the Chacra top. PUH.

**11. Plug 6 (Pictured Cliffs / Fruitland, 1680-2092', 53 Sacks Class B Cement)**

RIH w/ tbg. Mix 53 sx Class B cement and spot a balance plug inside casing to isolate the Fruitland & Pictured Cliffs tops. PUH.

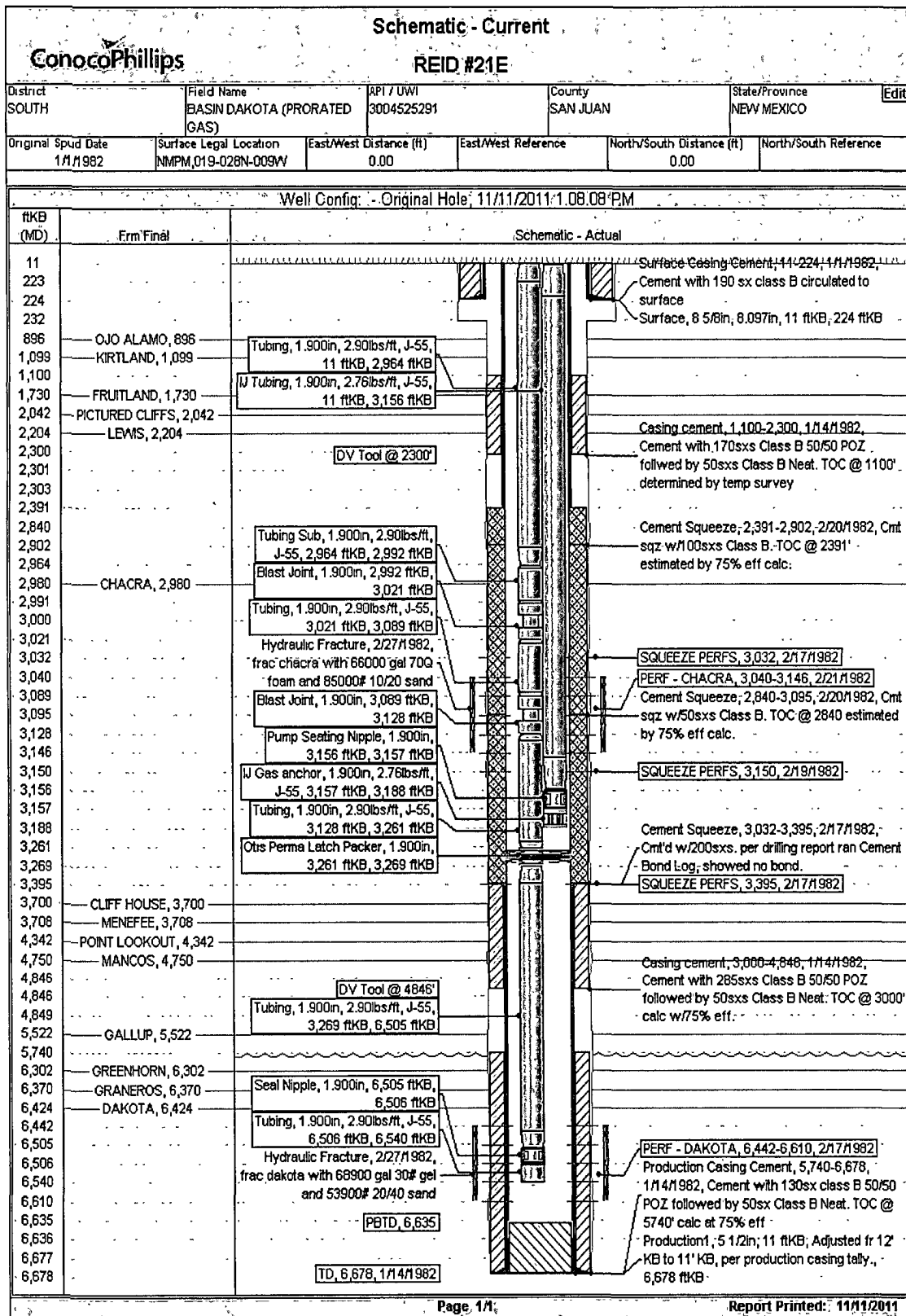
**12. Plug 7 (Kirtland/ Ojo Alamo, 846-1149', 115 Sacks Class B Cement)**

Perforate 3 HSC holes at 1,090. Set a 5-1/2" cement retainer at 1,080'. Establish injection rate into squeeze holes. Mix 115 sx Class B cement. Sqz 75 sx Class B cement into HSC holes and leave 40 sx cement inside casing to isolate the Kirtland & Ojo Alamo formation tops. TOH.

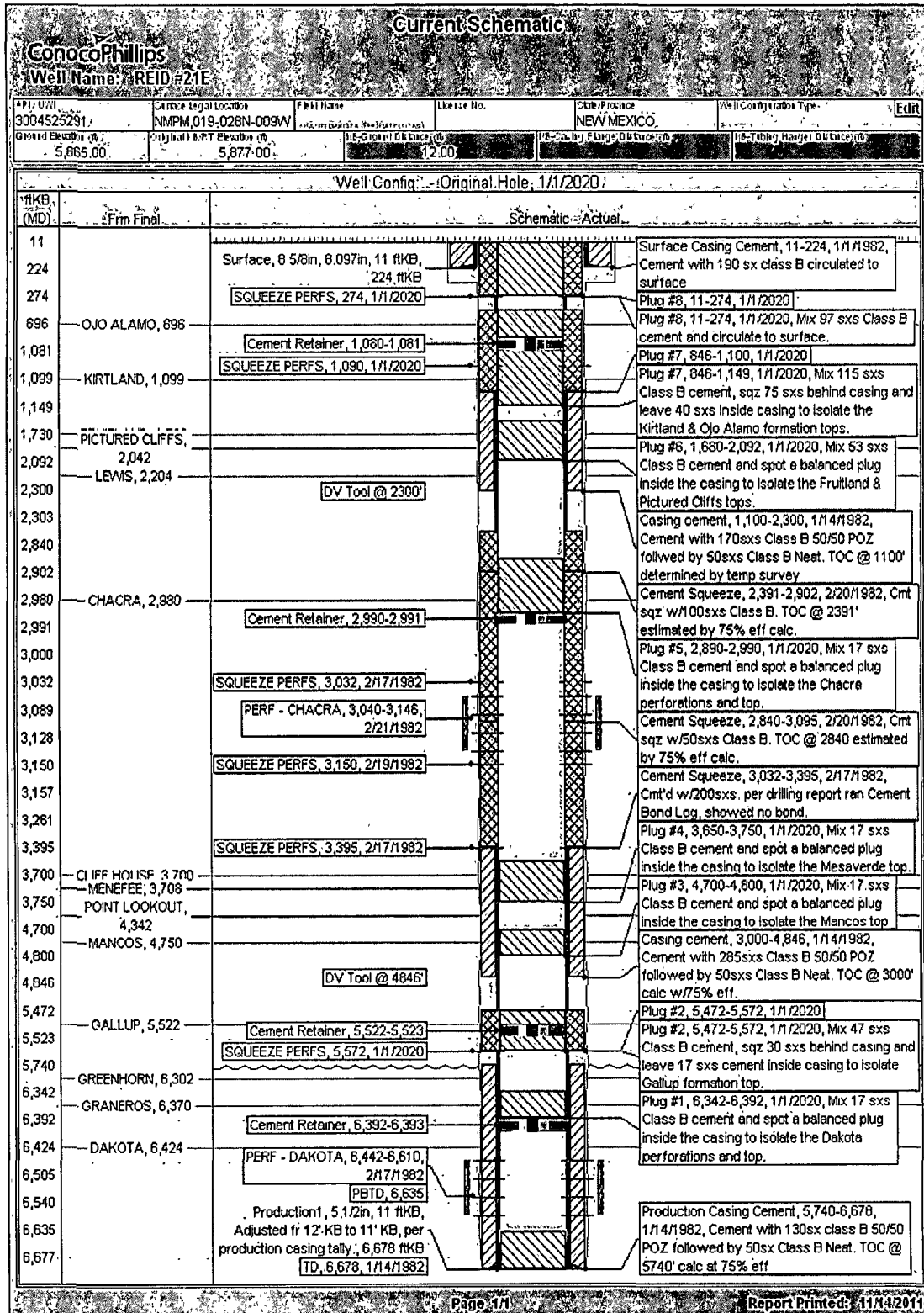
**13. Plug 8 (Surface Shoe, 0-274', 97 Sacks Class B Cement)**

Perforate 3 HSC holes @ 274'. Establish circulation to surface. Mix 97 sxs Class B cement and circulate cement from 274' to surface, once good cement has circulated out intermediate casing valve, close valve and continue to pump cement to fill casing to surface. Shut well in and WOC. Tag cement top and top out cement as necessary.

14. Nipple down BOP and cut off casing below the casing flange. Install P&A marker with cement to comply with regulations. Rig down, move off location, cut off anchors, and restore location.



# P&A Proposed Schematic



**UNITED STATES DEPARTMENT OF THE INTERIOR  
BUREAU OF LAND MANAGEMENT  
FARMINGTON DISTRICT OFFICE  
1235 LA PLATA HIGHWAY  
FARMINGTON, NEW MEXICO 87401**

Attachment to notice of  
Intention to Abandon:

Re: Permanent Abandonment  
Well: 21E Reid

**CONDITIONS OF APPROVAL**

1. Plugging operations authorized are subject to the attached "General Requirements for Permanent Abandonment of Wells on Federal and Indian Lease."
2. Farmington Office is to be notified at least 24 hours before the plugging operations commence (505) 599-8907.
3. The following modifications to your plugging program are to be made:
  - a) Place the Mesaverde plug from 3650' – 3550'.

You are also required to place cement excesses per 4.2 and 4.4 of the attached General Requirements.

Office Hours: 7:45 a.m. to 4:30 p.m.