

District I
1625 N French Dr., Hobbs, NM 88240
District II
1301 W Grand Avenue, Artesia, NM 88210
District III
1000 Rio Brazos Road, Aztec, NM 87410
District IV
1220 S St Francis Dr., Santa Fe, NM 87505

State of New Mexico
Energy Minerals and Natural Resources
Department
Oil Conservation Division
1220 South St. Francis Dr.
Santa Fe, NM 87505

Form C-144
July 21, 2008

For temporary pits, closed-loop systems, and below-grade tanks, submit to the appropriate NMOCD District Office.
For permanent pits and exceptions submit to the Santa Fe Environmental Bureau office and provide a copy to the appropriate NMOCD District Office.

Pit, Closed-Loop System, Below-Grade Tank, or
Proposed Alternative Method Permit or Closure Plan Application

9351
Type of action: ☐ Permit of a pit, closed-loop system, below-grade tank, or proposed alternative method
☒ Closure of a pit, closed-loop system, below-grade tank, or proposed alternative method
☐ Modification to an existing permit
☐ Closure plan only submitted for an existing permitted or non-permitted pit, closed-loop system, below-grade tank, or proposed alternative method

Instructions: Please submit one application (Form C-144) per individual pit, closed-loop system, below-grade tank or alternative request

Please be advised that approval of this request does not relieve the operator of liability should operations result in pollution of surface water, ground water or the environment. Nor does approval relieve the operator of its responsibility to comply with any other applicable governmental authority's rules, regulations or ordinances.

1.
Operator: Williams Operating Co, LLC OGRID #: 120782
Address: PO Box 640 / 721 S Main Aztec, NM 87410
Facility or well name: Rosa Unit #148C
API Number: 30-039-30196 OCD Permit Number: _____
U/L or Qtr/Qtr N Section 2 Township 31N Range 6W County: Rio Arriba
Center of Proposed Design: Latitude 36.92372N Longitude -107.43621W NAD: ☐ 1927 ☒ 1983
Surface Owner: ☐ Federal ☒ State ☐ Private ☐ Tribal Trust or Indian Allotment

2
☒ **Pit:** Subsection F or G of 19.15.17.11 NMAC
Temporary: ☒ Drilling ☒ Workover
☐ Permanent ☐ Emergency ☐ Cavitation ☐ P&A
☐ Lined ☒ Unlined Liner type: Thickness _____ mil ☐ LLDPE ☐ HDPE ☐ PVC ☐ Other _____
☐ String-Reinforced
Liner Seams: ☐ Welded ☒ Factory ☐ Other _____ Volume: 20,000 bbl Dimensions: L 140' x W 70' x D 12'

RCVD DEC 22 '11
OIL CONS. DIV.
DIST. 3

3.
☐ **Closed-loop System:** Subsection H of 19.15.17.11 NMAC
Type of Operation: ☐ P&A ☐ Drilling a new well ☐ Workover or Drilling (Applies to activities which require prior approval of a permit or notice of intent)
☐ Drying Pad ☐ Above Ground Steel Tanks ☐ Haul-off Bins ☐ Other _____
☐ Lined ☐ Unlined Liner type: Thickness _____ mil ☐ LLDPE ☐ HDPE ☐ PVC ☐ Other _____
Liner Seams: ☐ Welded ☐ Factory ☐ Other _____

4.
☐ **Below-grade tank:** Subsection I of 19.15.17.11 NMAC
Volume: _____ bbl Type of fluid: _____
Tank Construction material: _____
☐ Secondary containment with leak detection ☐ Visible sidewalls, liner, 6-inch lift and automatic overflow shut-off
☐ Visible sidewalls and liner ☐ Visible sidewalls only ☐ Other _____
Liner type: Thickness _____ mil ☐ HDPE ☐ PVC ☐ Other _____

5.
☐ **Alternative Method:**
Submittal of an exception request is required. Exceptions must be submitted to the Santa Fe Environmental Bureau office for consideration of approval.

6.

Fencing: Subsection D of 19.15.17.11 NMAC (*Applies to permanent pits, temporary pits, and below-grade tanks*)

- ☐ Chain link, six feet in height, two strands of barbed wire at top (*Required if located within 1000 feet of a permanent residence, school, hospital, institution or church*)
- ☐ Four foot height, four strands of barbed wire evenly spaced between one and four feet
- ☐ Alternate. Please specify _____

7.

Netting: Subsection E of 19.15.17.11 NMAC (*Applies to permanent pits and permanent open top tanks*)

- ☐ Screen ☐ Netting ☐ Other _____
- ☒ Monthly inspections (If netting or screening is not physically feasible)

8.

Signs: Subsection C of 19.15.17.11 NMAC

- ☐ 12"x 24", 2" lettering, providing Operator's name, site location, and emergency telephone numbers
- ☒ Signed in compliance with 19.15.3.103 NMAC

9.

Administrative Approvals and Exceptions:

Justifications and/or demonstrations of equivalency are required. Please refer to 19.15.17 NMAC for guidance.

Please check a box if one or more of the following is requested, if not leave blank:

- ☒ Administrative approval(s): Requests must be submitted to the appropriate division district or the Santa Fe Environmental Bureau office for consideration of approval.
- ☐ Exception(s): Requests must be submitted to the Santa Fe Environmental Bureau office for consideration of approval.

10.

Siting Criteria (regarding permitting): 19.15.17.10 NMAC

Instructions: The applicant must demonstrate compliance for each siting criteria below in the application. Recommendations of acceptable source material are provided below. Requests regarding changes to certain siting criteria may require administrative approval from the appropriate district office or may be considered an exception which must be submitted to the Santa Fe Environmental Bureau office for consideration of approval. Applicant must attach justification for request. Please refer to 19.15.17.10 NMAC for guidance. Siting criteria does not apply to drying pads or above-grade tanks associated with a closed-loop system.

Ground water is less than 50 feet below the bottom of the temporary pit, permanent pit, or below-grade tank. - NM Office of the State Engineer - iWATERS database search; USGS; Data obtained from nearby wells	<input type="checkbox"/> Yes <input checked="" type="checkbox"/> No
Within 300 feet of a continuously flowing watercourse, or 200 feet of any other significant watercourse or lakebed, sinkhole, or playa lake (measured from the ordinary high-water mark). - Topographic map; Visual inspection (certification) of the proposed site	<input type="checkbox"/> Yes <input checked="" type="checkbox"/> No
Within 300 feet from a permanent residence, school, hospital, institution, or church in existence at the time of initial application. (Applies to temporary, emergency, or cavitation pits and below-grade tanks) - Visual inspection (certification) of the proposed site; Aerial photo; Satellite image	<input type="checkbox"/> Yes <input checked="" type="checkbox"/> No <input type="checkbox"/> NA
Within 1000 feet from a permanent residence, school, hospital, institution, or church in existence at the time of initial application. (Applies to permanent pits) - Visual inspection (certification) of the proposed site; Aerial photo; Satellite image	<input type="checkbox"/> Yes <input type="checkbox"/> No <input checked="" type="checkbox"/> NA
Within 500 horizontal feet of a private, domestic fresh water well or spring that less than five households use for domestic or stock watering purposes, or within 1000 horizontal feet of any other fresh water well or spring, in existence at the time of initial application. - NM Office of the State Engineer - iWATERS database search; Visual inspection (certification) of the proposed site	<input type="checkbox"/> Yes <input checked="" type="checkbox"/> No
Within incorporated municipal boundaries or within a defined municipal fresh water well field covered under a municipal ordinance adopted pursuant to NMSA 1978, Section 3-27-3, as amended. - Written confirmation or verification from the municipality; Written approval obtained from the municipality	<input type="checkbox"/> Yes <input checked="" type="checkbox"/> No
Within 500 feet of a wetland. - US Fish and Wildlife Wetland Identification map; Topographic map; Visual inspection (certification) of the proposed site	<input type="checkbox"/> Yes <input checked="" type="checkbox"/> No
Within the area overlying a subsurface mine. - Written confirmation or verification or map from the NM EMNRD-Mining and Mineral Division	<input type="checkbox"/> Yes <input checked="" type="checkbox"/> No
Within an unstable area. - Engineering measures incorporated into the design; NM Bureau of Geology & Mineral Resources, USGS; NM Geological Society; Topographic map	<input type="checkbox"/> Yes <input checked="" type="checkbox"/> No
Within a 100-year floodplain. - FEMA map	<input type="checkbox"/> Yes <input checked="" type="checkbox"/> No

11.

Temporary Pits, Emergency Pits, and Below-grade Tanks Permit Application Attachment Checklist: Subsection B of 19.15.17.9 NMAC**Instructions:** Each of the following items must be attached to the application. Please indicate, by a check mark in the box, that the documents are attached.

- ☒ Hydrogeologic Report (Below-grade Tanks) - based upon the requirements of Paragraph (4) of Subsection B of 19.15.17.9 NMAC
- ☒ Hydrogeologic Data (Temporary and Emergency Pits) - based upon the requirements of Paragraph (2) of Subsection B of 19.15.17.9 NMAC
- ☒ Siting Criteria Compliance Demonstrations - based upon the appropriate requirements of 19.15.17.10 NMAC
- ☒ Design Plan - based upon the appropriate requirements of 19.15.17.11 NMAC
- ☒ Operating and Maintenance Plan - based upon the appropriate requirements of 19.15.17.12 NMAC
- ☒ Closure Plan (Please complete Boxes 14 through 18, if applicable) - based upon the appropriate requirements of Subsection C of 19.15.17.9 NMAC and 19.15.17.13 NMAC

☐ Previously Approved Design (attach copy of design) API Number: _____ or Permit Number: _____

12.

Closed-loop Systems Permit Application Attachment Checklist: Subsection B of 19.15.17.9 NMAC**Instructions:** Each of the following items must be attached to the application. Please indicate, by a check mark in the box, that the documents are attached.

- ☐ Geologic and Hydrogeologic Data (only for on-site closure) - based upon the requirements of Paragraph (3) of Subsection B of 19.15.17.9
- ☐ Siting Criteria Compliance Demonstrations (only for on-site closure) - based upon the appropriate requirements of 19.15.17.10 NMAC
- ☐ Design Plan - based upon the appropriate requirements of 19.15.17.11 NMAC
- ☐ Operating and Maintenance Plan - based upon the appropriate requirements of 19.15.17.12 NMAC
- ☐ Closure Plan (Please complete Boxes 14 through 18, if applicable) - based upon the appropriate requirements of Subsection C of 19.15.17.9 NMAC and 19.15.17.13 NMAC

☐ Previously Approved Design (attach copy of design) API Number: _____

☐ Previously Approved Operating and Maintenance Plan API Number: _____ (Applies only to closed-loop system that use above ground steel tanks or haul-off bins and propose to implement waste removal for closure)

13.

Permanent Pits Permit Application Checklist: Subsection B of 19.15.17.9 NMAC**Instructions:** Each of the following items must be attached to the application. Please indicate, by a check mark in the box, that the documents are attached.

- ☐ Hydrogeologic Report - based upon the requirements of Paragraph (1) of Subsection B of 19.15.17.9 NMAC
- ☐ Siting Criteria Compliance Demonstrations - based upon the appropriate requirements of 19.15.17.10 NMAC
- ☐ Climatological Factors Assessment
- ☐ Certified Engineering Design Plans - based upon the appropriate requirements of 19.15.17.11 NMAC
- ☐ Dike Protection and Structural Integrity Design - based upon the appropriate requirements of 19.15.17.11 NMAC
- ☐ Leak Detection Design - based upon the appropriate requirements of 19.15.17.11 NMAC
- ☐ Liner Specifications and Compatibility Assessment - based upon the appropriate requirements of 19.15.17.11 NMAC
- ☐ Quality Control/Quality Assurance Construction and Installation Plan
- ☐ Operating and Maintenance Plan - based upon the appropriate requirements of 19.15.17.12 NMAC
- ☐ Freeboard and Overtopping Prevention Plan - based upon the appropriate requirements of 19.15.17.11 NMAC
- ☐ Nuisance or Hazardous Odors, including H₂S, Prevention Plan
- ☐ Emergency Response Plan
- ☐ Oil Field Waste Stream Characterization
- ☐ Monitoring and Inspection Plan
- ☐ Erosion Control Plan
- ☐ Closure Plan - based upon the appropriate requirements of Subsection C of 19.15.17.9 NMAC and 19.15.17.13 NMAC

14.

Proposed Closure: 19.15.17.13 NMAC**Instructions:** Please complete the applicable boxes, Boxes 14 through 18, in regards to the proposed closure plan.

Type: ☒ Drilling ☐ Workover ☐ Emergency ☐ Cavitation ☐ P&A ☐ Permanent Pit ☐ Below-grade Tank ☐ Closed-loop System

☐ Alternative

Proposed Closure Method: ☐ Waste Excavation and Removal

☐ Waste Removal (Closed-loop systems only)

☒ On-site Closure Method (Only for temporary pits and closed-loop systems)

☒ In-place Burial ☐ On-site Trench Burial

☐ Alternative Closure Method (Exceptions must be submitted to the Santa Fe Environmental Bureau for consideration)

15.

Waste Excavation and Removal Closure Plan Checklist: (19.15.17.13 NMAC) **Instructions:** Each of the following items must be attached to the closure plan. Please indicate, by a check mark in the box, that the documents are attached.

- ☐ Protocols and Procedures - based upon the appropriate requirements of 19.15.17.13 NMAC
- ☐ Confirmation Sampling Plan (if applicable) - based upon the appropriate requirements of Subsection F of 19.15.17.13 NMAC
- ☐ Disposal Facility Name and Permit Number (for liquids, drilling fluids and drill cuttings)
- ☐ Soil Backfill and Cover Design Specifications - based upon the appropriate requirements of Subsection H of 19.15.17.13 NMAC
- ☐ Re-vegetation Plan - based upon the appropriate requirements of Subsection I of 19.15.17.13 NMAC
- ☐ Site Reclamation Plan - based upon the appropriate requirements of Subsection G of 19.15.17.13 NMAC

16.

Waste Removal Closure For Closed-loop Systems That Utilize Above Ground Steel Tanks or Haul-off Bins Only: (19.15.17.13.D NMAC)

Instructions: Please identify the facility or facilities for the disposal of liquids, drilling fluids and drill cuttings. Use attachment if more than two facilities are required.

Disposal Facility Name: _____ Disposal Facility Permit Number: _____

Disposal Facility Name: _____ Disposal Facility Permit Number: _____

Will any of the proposed closed-loop system operations and associated activities occur on or in areas that *will not* be used for future service and operations?

☐ Yes (If yes, please provide the information below) ☐ No

Required for impacted areas which will not be used for future service and operations.

☐ Soil Backfill and Cover Design Specifications - based upon the appropriate requirements of Subsection H of 19.15.17.13 NMAC

☐ Re-vegetation Plan - based upon the appropriate requirements of Subsection I of 19.15.17.13 NMAC

☐ Site Reclamation Plan - based upon the appropriate requirements of Subsection G of 19.15.17.13 NMAC

17.

Siting Criteria (regarding on-site closure methods only): 19.15.17.10 NMAC

Instructions: Each siting criteria requires a demonstration of compliance in the closure plan. Recommendations of acceptable source material are provided below. Requests regarding changes to certain siting criteria may require administrative approval from the appropriate district office or may be considered an exception which must be submitted to the Santa Fe Environmental Bureau office for consideration of approval. Justifications and/or demonstrations of equivalency are required. Please refer to 19.15.17.10 NMAC for guidance.

Ground water is less than 50 feet below the bottom of the buried waste.

- NM Office of the State Engineer - iWATERS database search; USGS; Data obtained from nearby wells

☐ Yes ☒ No
☐ NA

Ground water is between 50 and 100 feet below the bottom of the buried waste

- NM Office of the State Engineer - iWATERS database search; USGS; Data obtained from nearby wells

☐ Yes ☒ No
☐ NA

Ground water is more than 100 feet below the bottom of the buried waste.

- NM Office of the State Engineer - iWATERS database search; USGS; Data obtained from nearby wells

☒ Yes ☐ No
☐ NA

Within 300 feet of a continuously flowing watercourse, or 200 feet of any other significant watercourse or lakebed, sinkhole, or playa lake (measured from the ordinary high-water mark).

- Topographic map, Visual inspection (certification) of the proposed site

☐ Yes ☒ No

Within 300 feet from a permanent residence, school, hospital, institution, or church in existence at the time of initial application.

- Visual inspection (certification) of the proposed site; Aerial photo; Satellite image

☐ Yes ☒ No

Within 500 horizontal feet of a private, domestic fresh water well or spring that less than five households use for domestic or stock watering purposes, or within 1000 horizontal feet of any other fresh water well or spring, in existence at the time of initial application.

- NM Office of the State Engineer - iWATERS database; Visual inspection (certification) of the proposed site

☐ Yes ☒ No

Within incorporated municipal boundaries or within a defined municipal fresh water well field covered under a municipal ordinance adopted pursuant to NMSA 1978, Section 3-27-3, as amended.

- Written confirmation or verification from the municipality; Written approval obtained from the municipality

☐ Yes ☒ No

Within 500 feet of a wetland.

- US Fish and Wildlife Wetland Identification map; Topographic map; Visual inspection (certification) of the proposed site

☐ Yes ☒ No

Within the area overlying a subsurface mine.

- Written confirmation or verification or map from the NM EMNRD-Mining and Mineral Division

☐ Yes ☒ No

Within an unstable area.

- Engineering measures incorporated into the design, NM Bureau of Geology & Mineral Resources; USGS; NM Geological Society, Topographic map

☐ Yes ☒ No

Within a 100-year floodplain.

- FEMA map

☐ Yes ☒ No

18.

On-Site Closure Plan Checklist: (19.15.17.13 NMAC) **Instructions:** Each of the following items must be attached to the closure plan. Please indicate, by a check mark in the box, that the documents are attached.

☒ Siting Criteria Compliance Demonstrations - based upon the appropriate requirements of 19.15.17.10 NMAC

☒ Proof of Surface Owner Notice - based upon the appropriate requirements of Subsection F of 19.15.17.13 NMAC

☐ Construction/Design Plan of Burial Trench (if applicable) based upon the appropriate requirements of 19.15.17.11 NMAC

☒ Construction/Design Plan of Temporary Pit (for in-place burial of a drying pad) - based upon the appropriate requirements of 19.15.17.11 NMAC

☒ Protocols and Procedures - based upon the appropriate requirements of 19.15.17.13 NMAC

☒ Confirmation Sampling Plan (if applicable) - based upon the appropriate requirements of Subsection F of 19.15.17.13 NMAC

☒ Waste Material Sampling Plan - based upon the appropriate requirements of Subsection F of 19.15.17.13 NMAC

☒ Disposal Facility Name and Permit Number (for liquids, drilling fluids and drill cuttings or in case on-site closure standards cannot be achieved)

☒ Soil Cover Design - based upon the appropriate requirements of Subsection H of 19.15.17.13 NMAC

☒ Re-vegetation Plan - based upon the appropriate requirements of Subsection I of 19.15.17.13 NMAC

☒ Site Reclamation Plan - based upon the appropriate requirements of Subsection G of 19.15.17.13 NMAC

19.

Operator Application Certification:

I hereby certify that the information submitted with this application is true, accurate and complete to the best of my knowledge and belief.

Name (Print): _____ Title: _____

Signature: _____ Date: _____

e-mail address: _____ Telephone: _____

20.

OCD Approval: ☐ Permit Application (including closure plan) ☒ Closure Plan (only) ☐ OCD Conditions (see attachment)

OCD Representative Signature: Jonathan D. Kelly Approval Date: 12/23/2011

Title: Compliance Officer OCD Permit Number: _____

21.

Closure Report (required within 60 days of closure completion): Subsection K of 19.15.17.13 NMAC

Instructions: Operators are required to obtain an approved closure plan prior to implementing any closure activities and submitting the closure report. The closure report is required to be submitted to the division within 60 days of the completion of the closure activities. Please do not complete this section of the form until an approved closure plan has been obtained and the closure activities have been completed.

☒ Closure Completion Date: 11/18/2011

22.

Closure Method:

☐ Waste Excavation and Removal ☒ On-Site Closure Method ☐ Alternative Closure Method ☐ Waste Removal (Closed-loop systems only)
☐ If different from approved plan, please explain.

23.

Closure Report Regarding Waste Removal Closure For Closed-loop Systems That Utilize Above Ground Steel Tanks or Haul-off Bins Only:

Instructions: Please identify the facility or facilities for where the liquids, drilling fluids and drill cuttings were disposed. Use attachment if more than two facilities were utilized.

Disposal Facility Name: _____ Disposal Facility Permit Number: _____

Disposal Facility Name: _____ Disposal Facility Permit Number: _____

Were the closed-loop system operations and associated activities performed on or in areas that *will not* be used for future service and operations?

☐ Yes (If yes, please demonstrate compliance to the items below) ☐ No

Required for impacted areas which will not be used for future service and operations.

- ☐ Site Reclamation (Photo Documentation)
☐ Soil Backfilling and Cover Installation
☐ Re-vegetation Application Rates and Seeding Technique

24.

Closure Report Attachment Checklist: *Instructions: Each of the following items must be attached to the closure report. Please indicate, by a check mark in the box, that the documents are attached.*

- ☒ Proof of Closure Notice (surface owner and division)
☐ Proof of Deed Notice (required for on-site closure)
☒ Plot Plan (for on-site closures and temporary pits)
☐ Confirmation Sampling Analytical Results (if applicable)
☒ Waste Material Sampling Analytical Results (required for on-site closure)
☒ Disposal Facility Name and Permit Number
☒ Soil Backfilling and Cover Installation
☒ Re-vegetation Application Rates and Seeding Technique
☒ Site Reclamation (Photo Documentation)

On-site Closure Location: Latitude 36.92372 Longitude -107.43621 NAD: ☐ 1927 ☒ 1983

19.

Operator Closure Certification:

I hereby certify that the information submitted with this application is true, accurate and complete to the best of my knowledge and belief.

Name (Print): Ben Mitchell Title: Regulatory Specialist

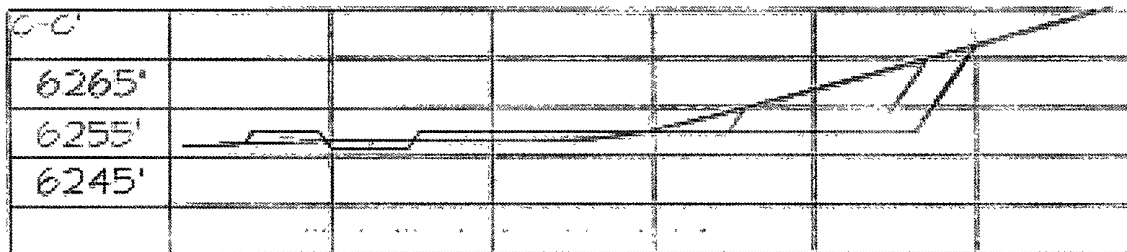
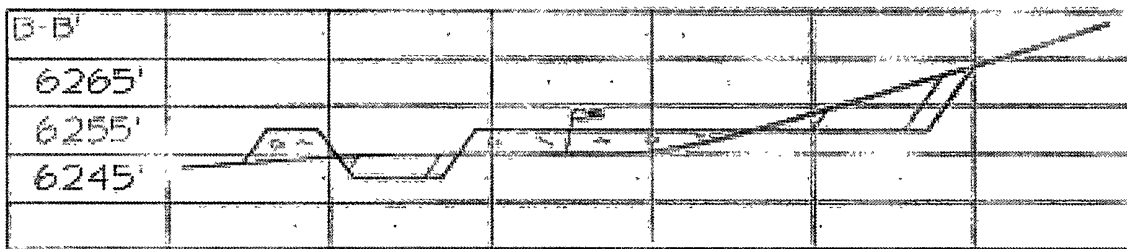
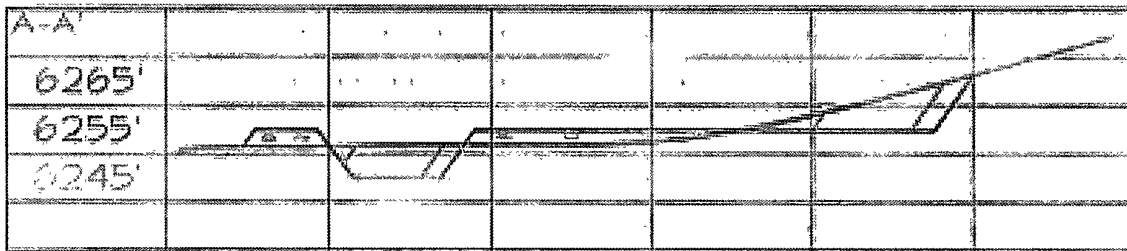
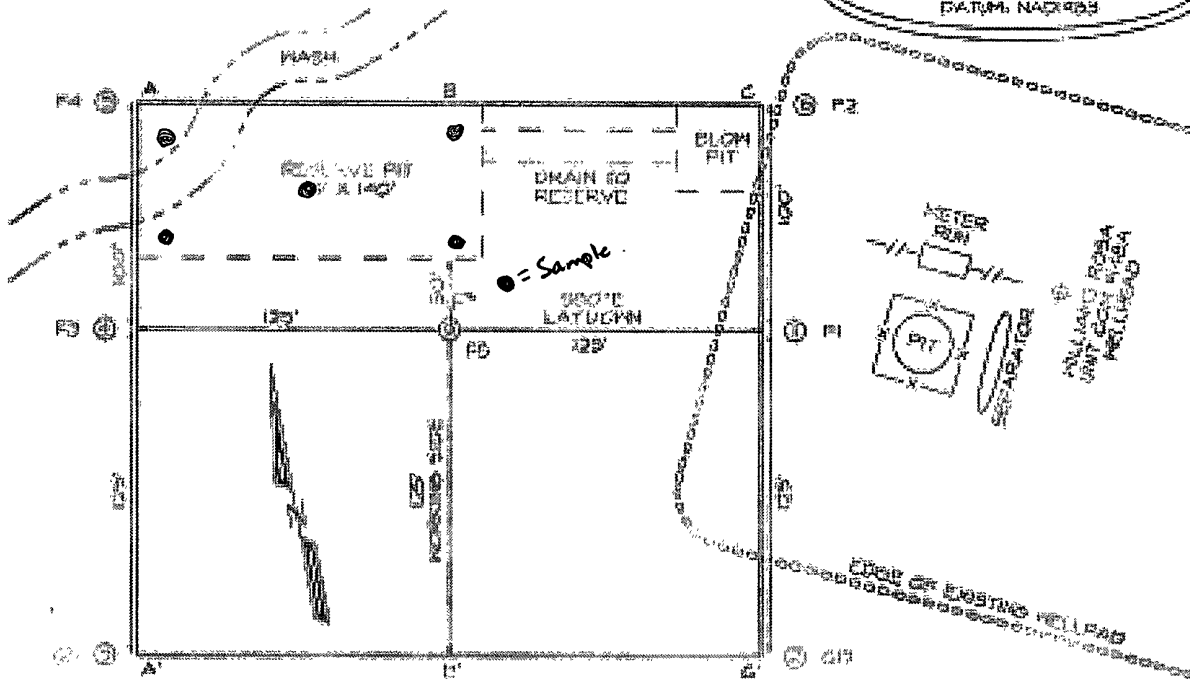
Signature: Ben Mitchell Date: 12/21/2011

e-mail address: ben.mitchell@williams.com Telephone: 505-333-1806

Williams Production Co., LLC
San Juan Basin: New Mexico Assets

WILLIAMS PRODUCTION COMPANY ROSA UNIT COM #148C
840' FSL & 1465' FWL, SECTION 2, T91N, R6W, NMPM
RIO ARriba COUNTY, NEW MEXICO ELEVATION: 6250'

LATITUDE: 36.92372° N
LONGITUDE: 107.43621° W
 DATUM: NAD83



FILED: 5/2/27

SHEET 2 OF 3

WILLIAMS PRODUCTION CO., LLC

DESIGNED BY: [illegible]

DATE: 5/2/27

Temporary Pit In-place Closure Report
Drilling/Completion and Workover
(Groundwater >100 feet bgs)

Well: (Rosa Unit #148C)
API No: 30-039-30196
Location: N-S2-T31N-R06W, NMPM

In accordance with Rule 19.15.17.13 NMAC, the following plan describes the general in-place closure requirements of temporary pits on Williams Production Co, LLC (WPX) locations in the San Juan Basin of New Mexico. This is WPX's standard procedure for all temporary pits to be utilized for the drilling, completion and/or workovers of oil and gas wells operated by WPX. For those temporary pits which do not conform to this standard closure plan, a separate well/pit specific closure plan will be developed and utilized.

All closure activities will include proper documentation and will be submitted to OCD within 60 days of the pit closure on a Closure Report using Division Form C-144. The Report will include the following:

- Details on Capping and Covering, where applicable
- Plot Plan (Pit Diagram)
- Inspection reports
- Sampling Results
- Division Form C-105: WELL COMPLETION OR RECOMPLETION REPORT AND LOG
- Copy of Deed Notice filed with the County Clerk (format to meet County requirements)
A deed notice is not required on state, federal or tribal land according to NMOCD FAQ dated October 30, 2008 and posted on the NMOCD website.

General Plan Requirements:

1. All free standing liquids will be removed from the pit at the start of the closure process. Liquids will be removed in a manner that the appropriate District Office approves including; recycled, reused, reclaimed, evaporated, and/or disposed of in a Division-approved facility. Once all free liquids are removed, the sludge will be stabilized by one of the following methods depending on equipment availability: blending with clean stockpiled soils or dewatering using a Bowl Decanter Centrifuge then blending with clean stockpiled soils.

To the extent practical, free liquids were pulled from the reserve pit following the completion rigoff. Haul dates were 9/14/2011 (SWD #002 API # 30-039-3081 Order – SWD-1236

2. The preferred method of closure for all temporary pits will be on-site closure by in-place burial, provided all the criteria in 19.15.17.13.B are met.

On-site burial plan for this location was approved by the Aztec District Office on 10/23/2008

3. The surface owner shall be notified of WPX's proposed closure plan using a means that provides proof of notice (i.e. certified mail/return receipt requested)

Williams notified the SMA of its intent to use a temporary pit and onsite burial in the Surface Use Plan in the well APD. The SMA was notified by email see attached. No return receipt required per BLM:FFO/NMOCD MOU dated 5/4/09.

4. Within six months of the "rig-off" status occurring WPX will ensure that the temporary pit is covered, recontoured and reseeded in progress.

Drill rig-off 8/1/2011). Request for transfer to completion rig submitted 8/4/2011 to OCD Aztec District Office, Completion rig-off 9/7/2011 Pit covered 11/18/2011. Pit area along with unused portions of well pad to be interim reclaimed in accordance with Surface Management Agency requirements in APD-COAs and per BLM:FFO/NMOCD MOU dated 5/4/09.

5. Notice of Closure will be given to the Aztec District office between 72 hours and one week of the scheduled closure via email or phone. The notification of closure will include the following:

- a. Operators Name (WPX)
- b. Well Name and API Number
- c. Location (USTR)

The Aztec District Office of NMOCD was notified by email using a format acceptable to the District. Copies of the notification from Abode Contractors on 11/8/2011) is attached.

6. The pit liner shall be removed above "mud level" after stabilization. Removal of the liner will consist of manually or mechanically cutting the liner at the mud level and removing all remaining liner. Care will be taken to remove "all" of the liner (i.e. anchored material). All excessive liner will be disposed of at a

licensed disposal facility (probably San Juan Regional Landfill operated by Waste Management under NMED Permit SWM-052426).

The liner to the temporary pit was removed above the "mud level" once stabilized. Removal of the liner consisted of manually cutting the liner and removing all remaining liner material above the "mud level" including the anchor material. All excessive liner was disposed of at the San Juan Regional Landfill operated by Waste Management under NMED Permit SWM-052426.

7. Solidification of the remaining pit contents shall be achieved by mixing non-waste containing, earthen material. The solidification process will be accomplished use a combination of natural drying and mechanical mixing. Pit contents will be mixed with non-waste, earthen material to a consistency that is deemed safe and stable. The mixing ratio shall not exceed 3 parts non-waste to 1 part pit contents.

Following removal of free liquids, the pit contents were mixed with non-waste containing, earthen material in order to achieve appropriate solidification and a consistency that was deemed safe and stable. The solidification process was accomplished using a combination of natural drying, and mechanically mixing using a dozer and trackhoe. The mixing ration was approximately 2.5-3 parts native soil to 1 part pit contents. Solidification was completed 11/18/2011

8. A five-point composite sample will be taken of the pit using sampling tools and all samples tested per 19.15.17.13(B)(1)(b) NMAC. In the event that the criteria are not met (See Table 1), all contents will be handled per 19.15.17.13(B)(1)(a) (i.e. dig and haul to a Division-approved facility). Approval to haul will be requested of the Aztec District office prior to initiation.

A five-point composite sampling was taken of the pit area using sampling tools and the sample was tested per 19.15.17.13(B)(1)(b) NMAC. Results are shown in Table 1 and lab reports are attached.

Table 1: Closure Criteria for Temporary Pits in Non-sensitive Areas with Groundwater >100 bgs.

Components	Testing Methods	Limits (mg/Kg)	Pit (mg/Kg)
Benzene	EPA SW-846 Method 8021B or 8260B	0.2	.0301
BTEX	EPA SW-846 Method 8021B or 8260B	50	.0839
TPH	EPA SW-846 Method 418.1	2500	281
GRO/DRO	EPA SW-846 Method 8015M (GRO/DRO)	500	ND
Chlorides	EPA SW-846 Method 300.1	500	210

9. Upon completion of solidification and testing, the pit area will be backfilled with non-waste earthen material compacted to native conditions to enable effective revegetation for successful evapotranspiration. A minimum of four feet of cover including replacement of one foot of suitable material to establish vegetation, or the background thickness of topsoil, whichever is greater.

Upon completion of solidification and testing, the pit area was backfilled with non-waste earthen material compacted to native conditions. A minimum of four feet of cover to the extent practical was achieved and the cover included just over a foot of topsoil suitable to establish vegetation.

10. Following cover, the site will be recontoured to meet the Surface Management Agency or surface owner requirements. Re-contouring will attempt to match fit, shape, line form, and texture of the surrounding geography. Re-shaping will include drainage control, prevent ponding, and minimize erosion. Natural drainages will be unimpeded and stormwater Best Management Practices (BMPs) will be used to aid in soil stabilization and protection surface water quality.

Following cover, Williams reestablished drainage and contours to approximately match previous topography meeting the Conditions of Approval in the APD and the direction offered by a BLM/USFS inspector. Cover and re-contouring were completed 11/18/2011

11. Notification will be sent to the Aztec District office when the reclaimed area is seeded.

Williams will comply with Surface Management Agency reseeding requirements in the COAs of the APD for the referenced well, per BLM:FFO/NMOCD MOU dated 5/4/09.

12. WPX shall seed the disturbed areas the first growing season after the pit is covered. Seeding will be accomplished via drilling on the contour whenever practical, or by other Division-approved methods. Vegetative cover will equal 70% of the native perennial vegetative cover (un-impacted) consisting of at least three native plant species, including at least one grass, but not including noxious weeds, and maintained that cover through two successive growing seasons. Repeat seeding or planting will be continued until successful vegetative growth occurs. Note: WPX assumes the seeding stipulations including mix and seeding methods specified by the Surface Management Agency (BLM, BOR, USFS, Tribal, etc.) or Land owner as part of a surface use agreement or APD are Division-approved methods unless notified by the Division of their unacceptability.

Williams will comply with Surface Management Agency reseeding requirements in the COAs of the APD for the referenced well, per BLM:FFO/NMOCD MOU dated 5/4/09.

13. The temporary pit will be located with a steel marker, no less than four inches in diameter, cemented in a hole three feet deep in the center of the on site burial upon the abandonment of all wells on the

pad. The marker will be flush with the ground to allow access of the active well pad and for safety concerns. The marker will include a threaded collar to be used for future abandonment. The top of the marker will contain a welded steel 12" square plate that indicates the on site burial of the temporary pit. The plate will be easily removable and a four-foot tall riser will be threaded into the top of the collar marker and welded around the base with the operations information at the time of all wells on the pad abandoned. The information will include Operator Name, Lease Name, Well Name, and number, USTR, and an indicator that the marker is an onsite pit burial location.

The temporary pit was located with a steel marker meeting the above listed specifications. The marker has the following information welded for future reference: Williams Production, S2-T31N-R06W-N, "In -PLace Burial" (photo attached). Steel marker set 12/4/2011

**EPA METHOD 8015 Modified
Nonhalogenated Volatile Organics
Total Petroleum Hydrocarbons**

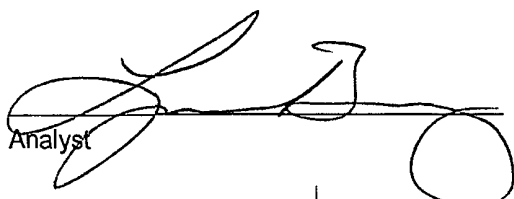
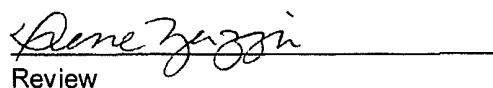
Client:	WPX	Project #:	04108-0136
Sample ID:	Reserve Pit	Date Reported:	11-21-11
Laboratory Number:	60322	Date Sampled:	11-14-11
Chain of Custody No:	12949	Date Received:	11-15-11
Sample Matrix:	Soil	Date Extracted:	11-15-11
Preservative:	Cool	Date Analyzed:	11-17-11
Condition:	Intact	Analysis Requested:	8015 TPH

Parameter	Concentration (mg/Kg)	Det. Limit (mg/Kg)
Gasoline Range (C5 - C10)	ND	0.2
Diesel Range (C10 - C28)	ND	0.1
Total Petroleum Hydrocarbons	ND	

ND - Parameter not detected at the stated detection limit.

References: Method 8015B, Nonhalogenated Volatile Organics, Test Methods for Evaluating Solid Waste, SW-846, USEPA, December 1996.

Comments: **Rosa Unit 148C**


Analyst
Review

**EPA Method 8015 Modified
 Nonhalogenated Volatile Organics
 Total Petroleum Hydrocarbons**

Quality Assurance Report

Client:	QA/QC	Project #:	N/A
Sample ID:	11-17-11 QA/QC	Date Reported:	11-21-11
Laboratory Number:	60321	Date Sampled:	N/A
Sample Matrix:	Methylene Chloride	Date Received:	N/A
Preservative:	N/A	Date Analyzed:	11-17-11
Condition:	N/A	Analysis Requested:	TPH

	I-Cal Date	I-Cal RF	C-Cal RF	% Difference	Accept. Range
Gasoline Range C5 - C10	11-17-11	1.007E+03	1.008E+03	0.04%	0 - 15%
Diesel Range C10 - C28	11-17-11	1.013E+03	1.013E+03	0.04%	0 - 15%

Blank Conc. (mg/L - mg/Kg)	Concentration	Detection Limit
Gasoline Range C5 - C10	4.0	0.2
Diesel Range C10 - C28	4.6	0.1


Duplicate Conc. (mg/Kg)	Sample	Duplicate	% Difference	Range
Gasoline Range C5 - C10	ND	ND	0.00%	0 - 30%
Diesel Range C10 - C28	ND	ND	0.00%	0 - 30%

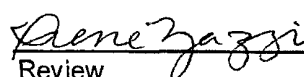
Spike Conc. (mg/Kg)	Sample	Spike Added	Spike Result	% Recovery	Accept. Range
Gasoline Range C5 - C10	ND	250	251	100%	75 - 125%
Diesel Range C10 - C28	ND	250	245	98.2%	75 - 125%

ND - Parameter not detected at the stated detection limit.

References: Method 8015B, Nonhalogenated Volatile Organics, Test Methods for Evaluating Solid Waste,
 SW-846, USEPA, December 1996.

Comments: QA/QC for Samples 60321-60324, 60326-60327 and 60331

Analyst 

Review 

**EPA METHOD 8021
AROMATIC VOLATILE ORGANICS**

Client:	WPX	Project #:	04108-0136
Sample ID:	Reserve Pit	Date Reported:	11-30-11
Laboratory Number:	60322	Date Sampled:	11-14-11
Chain of Custody:	12949	Date Received:	11-15-11
Sample Matrix:	Soil	Date Analyzed:	11-29-11
Preservative:	Cool	Date Extracted:	11-29-11
Condition:	Intact	Analysis Requested:	BTEX
		Dilution:	10

Parameter	Concentration (ug/Kg)	Det. Limit (ug/Kg)
Benzene	30.1	0.9
Toluene	14.3	1.0
Ethylbenzene	4.7	1.0
p,m-Xylene	22.9	1.2
o-Xylene	11.9	0.9
Total BTEX	83.9	

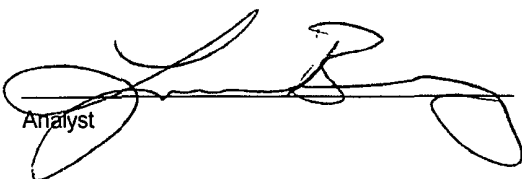
ND - Parameter not detected at the stated detection limit.

Surrogate Recoveries:	Parameter	Percent Recovery
	Fluorobenzene	92.6 %
	1,4-difluorobenzene	103 %
	Bromochlorobenzene	102 %

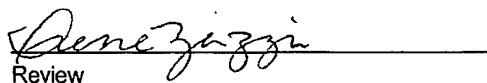
References: Method 5030B, Purge-and-Trap, Test Methods for Evaluating Solid Waste, SW-846, USEPA, December 1996.

Method 8021B, Aromatic Volatile Organics, Test Methods for Evaluating Solid Waste, SW-846, USEPA, December 1996.

Comments: Rosa Unit 148C



Analyst



Review

**EPA METHOD 8021
AROMATIC VOLATILE ORGANICS**

Client:	N/A	Project #:	N/A
Sample ID:	1129BBLK QA/QC	Date Reported:	11-29-11
Laboratory Number:	60435	Date Sampled:	N/A
Sample Matrix:	Soil	Date Received:	N/A
Preservative:	N/A	Date Analyzed:	11-29-11
Condition:	N/A	Analysis:	BTEX
		Dilution:	10

Calibration and Detection Limits (ug/L)	I-Cal RE	C-Cal RE	%Diff	Blank Conc	Detect Limit
			Accept Range 0 - 15%		
Benzene	3.3857E+006	3.3925E+006	0.2%	ND	0.1
Toluene	1.0800E+006	1.0822E+006	0.2%	ND	0.1
Ethylbenzene	7.6745E+005	7.6899E+005	0.2%	ND	0.1
p,m-Xylene	1.6746E+006	1.6779E+006	0.2%	ND	0.1
o-Xylene	6.2429E+005	6.2554E+005	0.2%	ND	0.1

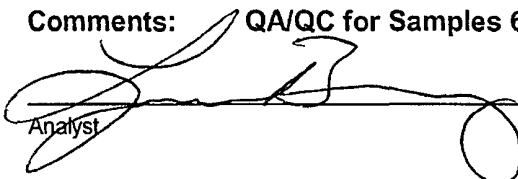
Duplicate Conc: (ug/Kg)	Sample	Duplicate	%Diff	Accept Range	Detect Limit
Benzene	ND	ND	0.0%	0 - 30%	0.9
Toluene	1.7	1.7	0.0%	0 - 30%	1.0
Ethylbenzene	ND	ND	0.0%	0 - 30%	1.0
p,m-Xylene	ND	ND	0.0%	0 - 30%	1.2
o-Xylene	2.6	2.4	7.7%	0 - 30%	0.9

Spike Conc: (ug/Kg)	Sample	Amount Spiked	Spiked Sample	% Recovery	Accept Range
Benzene	ND	500	505	101%	39 - 150
Toluene	1.7	500	538	107%	46 - 148
Ethylbenzene	ND	500	551	110%	32 - 160
p,m-Xylene	ND	1000	1,080	108%	46 - 148
o-Xylene	2.6	500	546	109%	46 - 148

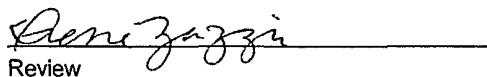
ND - Parameter not detected at the stated detection limit.

Dilution: Spike and spiked sample concentration represent a dilution proportional to sample dilution.

References: Method 5030B, Purge-and-Trap, Test Methods for Evaluating Solid Waste, SW-846, USEPA, December 1996.
Method 8021B, Aromatic and Halogenated Volatiles by Gas Chromatography Using Photoionization and/or Electrolytic Conductivity Detectors, SW-846, USEPA December 1996.

Comments: QA/QC for Samples 60321-60324, 60326-60327, 60435


Analyst



Review



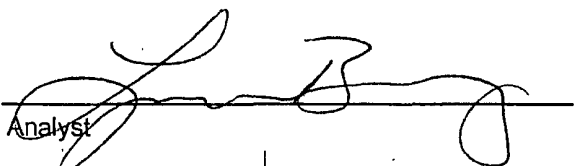
Client:	WPX	Project #:	04108-0136
Sample ID:	Reserve Pit	Date Reported:	11-18-11
Laboratory Number:	60322	Date Sampled:	11-14-11
Chain of Custody No:	12949	Date Received:	11-15-11
Sample Matrix:	Soil	Date Extracted:	11-15-11
Preservative:	Cool	Date Analyzed:	11-15-11
Condition:	Intact	Analysis Needed:	TPH-418.1

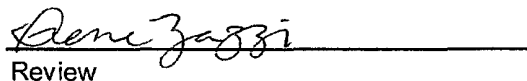
Parameter	Concentration (mg/kg)	Det. Limit (mg/kg)
Total Petroleum Hydrocarbons	281	40.3

ND = Parameter not detected at the stated detection limit.

References: Method 418.1, Petroleum Hydrocarbons, Total Recoverable, Chemical Analysis of Water and Waste, USEPA Storet No. 4551, 1978.

Comments: **Rosa Unit 148C**

Analyst 

Review 



envirotech
Analytical Laboratory

**EPA METHOD 418.1
TOTAL PETROLEUM HYDROCARBONS
QUALITY ASSURANCE REPORT**

Client:	QA/QC	Project #:	N/A
Sample ID:	QA/QC	Date Reported:	11-16-11
Laboratory Number:	11-15-TPH.QA/QC 60301	Date Sampled:	N/A
Sample Matrix:	Freon-113	Date Analyzed:	11-15-11
Preservative:	N/A	Date Extracted:	11-15-11
Condition:	N/A	Analysis Needed:	TPH

Calibration	I-Cal Date	C-Cal Date	I-Cal RF	C-Cal RF	% Difference	Accept Range
	10-18-11	11-15-11	1,800	1,850	2.8%	+/- 10%

Blank Conc. (mg/Kg)	Concentration	Detection Limit
TPH	ND	40.3

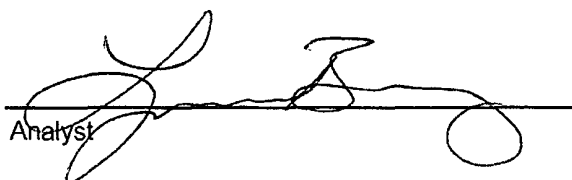
Duplicate Conc. (mg/Kg)	Sample	Duplicate	% Difference	Accept Range
TPH	238	252	6.1%	+/- 30%

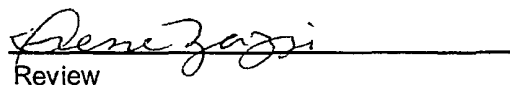
Spike Conc. (mg/Kg)	Sample	Spike Added	Spike Result	% Recovery	Accept Range
TPH	238	2,000	2,450	109%	80 - 120%

ND = Parameter not detected at the stated detection limit.

References: Method 418.1, Petroleum Hydrocarbons, Total Recoverable, Chemical Analysis of Water and Waste, USEPA Storet No. 4551, 1978.

Comments: QA/QC for Samples 60301, 60303, 60321-60324


Analyst


Review

Chloride

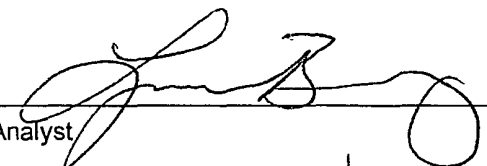
Client:	WPX	Project #:	04108-0136
Sample ID:	Reserve Pit	Date Reported:	11-21-11
Lab ID#:	60322	Date Sampled:	11-14-11
Sample Matrix:	Soil	Date Received:	11-15-11
Preservative:	Cool	Date Analyzed:	11-16-11
Condition:	Intact	Chain of Custody:	12949

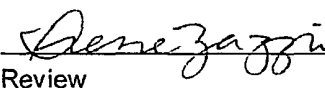
Parameter	Concentration (mg/Kg)
-----------	-----------------------

Total Chloride**210**

Reference: U.S.E.P.A., 4500B, "Methods for Chemical Analysis of Water and Wastes", 1983.
Standard Methods For The Examination of Water And Waste Water", 18th ed., 1992.

Comments: **Rosa Unit 148C**


Analyst


Review

CHAIN OF CUSTODY RECORD

12949

Client: <u>W.P.X.</u>			Project Name / Location: <u>Rose Unit 148C</u>			ANALYSIS / PARAMETERS													
Client Address: <u>Myke Lane</u>			Sampler Name: <u>John Shelby</u>			TPH (Method 8015)	BTEX (Method 8021)	VOC (Method 8260)	RCRA 8 Metals	Cation / Anion	RCI	TCLP with H/P	PAH	TPH (418.1)	CHLORIDE			Sample Cool	Sample Intact
Client Phone No.:			Client No.: <u>04108-0136</u>																
Sample No./ Identification	Sample Date	Sample Time	Lab No.	Sample Matrix	No./Volume of Containers	Preservative													
						HgCl ₂	HCl												
<u>Reserve Pit</u>	<u>11/4/11</u>	<u>10:15 am</u>	<u>60322</u>	<u>Soil Solid</u>	<u>1</u>	<u>4oz</u>												<u>X</u>	<u>X</u>
				Soil Solid															
				Soil Solid															
				Soil Solid															
				Soil Solid															
				Soil Solid															
				Soil Solid															
				Soil Solid															
				Soil Solid															
				Soil Solid															
				Soil Solid															
				Soil Solid															
Relinquished by: (Signature) <u>John Shelby</u>					Date	Time	Received by: (Signature) <u>[Signature]</u>					Date	Time						
Relinquished by: (Signature)							Received by: (Signature)												
Relinquished by: (Signature)							Received by: (Signature)												



envirotech
Analytical Laboratory

5796 US Highway 64 • Farmington, NM 87401 • 505-632-0615 • lab@envirotech-inc.com

District I
1625 N. French Dr., Hobbs, NM 88240

District II
1301 W. Grand Avenue, Artesia, NM 88210

District III
1000 Rio Brazos Rd., Aztec, NM 87410

District IV
1220 S. St. Francis Dr., Santa Fe, NM 87505

State of New Mexico
Energy, Minerals & Natural Resources Department

OIL CONSERVATION DIVISION
1220 South St. Francis Dr.
Santa Fe, NM 87505

Form C-102
Revised October 12, 2005

Instructions on back
Submit to Appropriate District Office
State Lease - 4 Copies
Fee Lease - 3 Copies

☐ AMENDED REPORT

WELL LOCATION AND ACREAGE DEDICATION PLAT

¹ API Number	² Pool Code 72319 / 71599	³ Pool Name BLANCO MESAVERDE / BASIN DAKOTA
⁴ Property Code 17033	⁵ Property Name ROSA UNIT COM	⁶ Well Number 148C
⁷ OGRID No. 120782	⁸ Operator Name WILLIAMS PRODUCTION COMPANY	⁹ Elevation 6250'

¹⁰ Surface Location

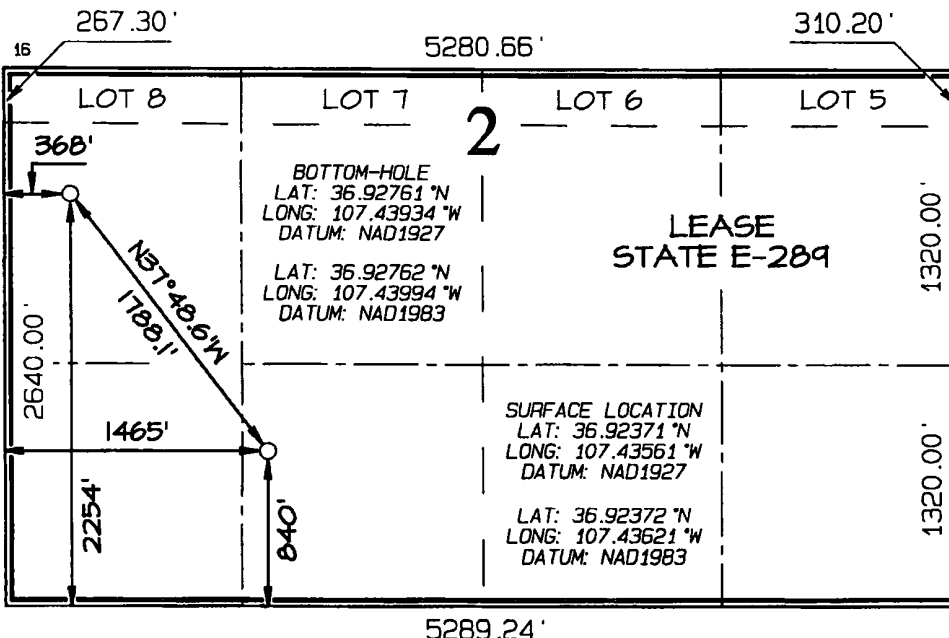
UL or lot no.	Section	Township	Range	Lot Idn	Feet from the	North/South line	Feet from the	East/West line	County
N	2	31N	6W		840	SOUTH	1465	WEST	RIO ARriba

¹¹ Bottom Hole Location If Different From Surface

UL or lot no.	Section	Township	Range	Lot Idn	Feet from the	North/South line	Feet from the	East/West line	County
L	2	31N	6W		2254	SOUTH	368	WEST	RIO ARriba

¹² Dedicated Acres 356.25 Acres - Entire Section	¹³ Joint or Infill	¹⁴ Consolidation Code	¹⁵ Order No.
--	-------------------------------	----------------------------------	-------------------------

NO ALLOWABLE WILL BE ASSIGNED TO THIS COMPLETION UNTIL ALL INTERESTS HAVE BEEN CONSOLIDATED
OR A NON-STANDARD UNIT HAS BEEN APPROVED BY THE DIVISION



¹⁷ OPERATOR CERTIFICATION

I hereby certify that the information contained herein is true and complete to the best of my knowledge and belief, and that this organization either owns a working interest or unleased mineral interest in the land including the proposed bottom-hole location or has a right to drill this well at this location pursuant to a contract with an owner of such a mineral or working interest, or to a voluntary pooling agreement or a compulsory pooling order heretofore entered by the division.

Signature _____ Date _____

Printed Name _____

¹⁸ SURVEYOR CERTIFICATION

I hereby certify that the well location shown on this plat was plotted from field notes of actual surveys made by me or under my supervision, and that the same is true and correct to the best of my belief.

Date Revised: AUGUST 12, 2011
Date of Survey: APRIL 26, 2006

Signature and Seal of Professional Surveyor



JASON C. EDWARDS
Certificate Number 15269

Meador, Tasha

From: johnny@adobecontractorsinc.com
Sent: Tuesday, November 08, 2011 2:31 PM
To: Brandon Powell
Cc: Meador, Tasha; Granillo, Lacey; Lepich, Mark; glenn@adobecontractorsinc.com
Subject: Williams clean ups Rosa Unit #148C and 217A

Brandon,

We will be ready to start backfilling the pits on the Rosa Unit #148C and 217A by the end of the week. Please let me know if you have any questions.

Thank you,

Johnny Stinson
Gen. Manager/ Adobe Contractors
Office: (505)632-1486
Mobile: (505)320-6076
johnny@adobecontractorsinc.com

Meador, Tasha

From: johnny@adobecontractorsinc.com
Sent: Tuesday, November 08, 2011 2:33 PM
To: Bill Liess; Mark Kelly; Randy Mckee; Robert Switzer; Sherrie Landon
Cc: Meador, Tasha; Granillo, Lacey
Subject: Williams Clen ups Rosa Unit #148C and 217A

We will be ready to start backfilling the pits on the Rosa Unit #148C and 217A by the end of the week. Please let me know if you have any questions.

Thank you,

Johnny Stinson
Gen. Manager/ Adobe Contractors
Office: (505)632-1486
Mobile: (505)320-6076
johnny@adobecontractorsinc.com

Submit To Appropriate District Office Two Copies <u>District I</u> 1625 N. French Dr., Hobbs, NM 88240 <u>District II</u> 1301 W Grand Avenue, Artesia, NM 88210 <u>District III</u> 1000 Rio Brazos Rd., Aztec, NM 87410 <u>District IV</u> 1220 S. St Francis Dr., Santa Fe, NM 87505	State of New Mexico Energy, Minerals and Natural Resources Oil Conservation Division 1220 South St. Francis Dr. Santa Fe, NM 87505	Form C-105 July 17, 2008								
		1. WELL API NO. 30-039-30196								
		2. Type of Lease <input type="checkbox"/> STATE <input type="checkbox"/> FEE <input checked="" type="checkbox"/> FED/INDIAN								
		3. State Oil & Gas Lease No. SF-078767								
WELL COMPLETION OR RECOMPLETION REPORT AND LOG										
4. Reason for filing: <input type="checkbox"/> COMPLETION REPORT (Fill in boxes #1 through #31 for State and Fee wells only) <input checked="" type="checkbox"/> C-144 CLOSURE ATTACHMENT (Fill in boxes #1 through #9, #15 Date Rig Released and #32 and/or #33; attach this and the plat to the C-144 closure report in accordance with 19.15 17 13 K NMAC)		5. Lease Name or Unit Agreement Name Rosa								
		6. Well Number Rosa Unit #148C								
7. Type of Completion: <input checked="" type="checkbox"/> NEW WELL <input type="checkbox"/> WORKOVER <input type="checkbox"/> DEEPENING <input type="checkbox"/> PLUGBACK <input type="checkbox"/> DIFFERENT RESERVOIR <input type="checkbox"/> OTHER										
8. Name of Operator WILLIAMS PRODUCTION, LLC		9. OGRID 120782								
10. Address of Operator P.O. BOX 640 AZTEC, NM 87410		11. Pool name or Wildcat								
12. Location	Unit Ltr	Section	Township	Range	Lot	Feet from the	N/S Line	Feet from the	E/W Line	County
Surface:										
BH:										
13. Date Spudded	14. Date T.D. Reached	15. Date Rig Released 9/7/2011		16. Date Completed (Ready to Produce)			17. Elevations (DF and RKB, RT, GR, etc.)			
18. Total Measured Depth of Well		19. Plug Back Measured Depth		20. Was Directional Survey Made?			21. Type Electric and Other Logs Run			
22. Producing Interval(s), of this completion - Top, Bottom, Name										
23. CASING RECORD (Report all strings set in well)										
CASING SIZE		WEIGHT LB /FT		DEPTH SET		HOLE SIZE		CEMENTING RECORD		AMOUNT PULLED
24. LINER RECORD						25. TUBING RECORD				
SIZE	TOP	BOTTOM	SACKS CEMENT	SCREEN		SIZE	DEPTH SET	PACKER SET		
26. Perforation record (interval, size, and number)						27. ACID, SHOT, FRACTURE, CEMENT, SQUEEZE, ETC.				
						DEPTH INTERVAL		AMOUNT AND KIND MATERIAL USED		
28. PRODUCTION										
Date First Production		Production Method (Flowing, gas lift, pumping - Size and type pump)					Well Status (Prod or Shut-in)			
Date of Test	Hours Tested	Choke Size	Prod'n For Test Period	Oil - Bbl	Gas - MCF	Water - Bbl.	Gas - Oil Ratio			
Flow Tubing Press	Casing Pressure	Calculated 24-Hour Rate	Oil - Bbl	Gas - MCF	Water - Bbl.	Oil Gravity - API - (Corr.)				
29. Disposition of Gas (Sold, used for fuel, vented, etc.)							30. Test Witnessed By			
31. List Attachments										
32. If a temporary pit was used at the well, attach a plat with the location of the temporary pit.										
33. If an on-site burial was used at the well, report the exact location of the on-site burial:										
Latitude 36.92372 Longitude: 107.43621 NAD 1927 1983										
I hereby certify that the information shown on both sides of this form is true and complete to the best of my knowledge and belief										
Signature <u>Tasha Meador</u> Printed Name <u>Tasha Meador</u> Title <u>Permit Technician</u> Date <u>12/13/11</u> E-mail Address: <u>tasha.meador@williams.com</u>										



TEMPORARY PIT INSPECTION REPORT

Well Name	Rosa Unit 148C Corn	Field Name	Blanco MV/Basin DK	API #	30-039-30196	Report #	1
Location	NESW Sec 2-31N-6W	County	Rio Arriba	State	NM	Rpt Date	7/21/2011

Date	Report Type	Inspector	Liner Intact Y/N	Fenced Y/N	Slopes Intact Y/N	Adequate Freeboard Y/N	Oil Free Y/N	Flare Pit Liquid Free Y/N	Comment
7/21/11	Daily		Y		Y	Y	Y	Y	
7/22/11	Daily		Y	Y	Y	Y	Y	Y	
7/23/11	Daily		Y	Y	Y	Y	Y	Y	
7/24/11	Daily		Y	Y	Y	Y	Y	Y	
7/25/11	Daily		Y	Y	Y	Y	Y	Y	
7/26/11	Daily		Y	Y	Y	Y	Y	Y	
7/27/11	Daily		Y	Y	Y	Y	Y	Y	
7/28/11	Daily		Y	Y	Y	Y	Y	Y	
7/29/11	Daily		Y	Y	Y	Y	Y	Y	
7/30/11	Daily		Y	Y	Y	Y	Y	Y	
7/31/11	Daily		Y	Y	Y	Y	Y	Y	
8/1/11	Daily		Y	Y	Y	Y	Y	Y	
8/5/11	Daily		Y	Y	Y	Y	Y	Y	
8/6/11	Daily		Y	Y	Y	Y	Y	Y	
8/7/11	Daily		Y	Y	Y	Y	Y	Y	
8/9/11	Daily		Y	Y	Y	Y	Y	Y	
8/11/11									
8/20/11	Daily		Y	Y	Y	Y	Y	Y	
8/22/11									
8/23/11	Daily		Y	Y	Y	Y	Y	Y	
8/24/11	Daily		Y	Y	Y	Y	Y	Y	
8/25/11	Daily		Y	Y	Y	Y	Y	Y	
8/26/11	Daily		Y	Y	Y	Y	Y	Y	
8/27/11	Daily		Y	Y	Y	Y	Y	Y	
8/30/11	Daily		Y	Y	Y	Y	Y	Y	
8/31/11	Daily		Y	Y	Y	Y	Y	Y	
9/1/11	Daily		Y	Y	Y	Y	Y	Y	
9/2/11	Daily		Y	Y	Y	Y	Y	Y	
9/3/11	Daily		Y	Y	Y	Y	Y	Y	
9/4/11	Daily		Y	Y	Y	Y	Y	Y	
9/7/11	Daily		Y	Y	Y	Y	Y	Y	
9/14/11	Daily		Y	Y	Y	Y	Y	Y	
7/19/11	Weekly		Y	Y	Y	Y	Y	Y	
8/3/11	Weekly		Y	Y	Y	Y	Y	Y	
8/17/11	Weekly		Y	Y	Y	Y	Y	Y	
8/24/11	Weekly		Y	Y	Y	Y	Y	Y	
9/8/11	Weekly		Y	Y	Y	Y	Y	Y	
9/14/11	Weekly		Y	Y	Y	Y	Y	Y	
9/22/11	Weekly		Y	Y	Y	Y	Y	Y	
9/28/11	Weekly		Y	Y	Y	Y	Y	Y	
10/4/11	Weekly		Y	Y	Y	Y	Y	Y	
10/18/11	Weekly		Y	Y	Y	Y	Y	Y	



Williams Prod. Co.

Rosa Unit #1480

Unit N Sec. 2

T 31 N R 6 W

Rio Arriba Co.

In-Place Burial