

DISTRICT I
 1625 N. French Dr., Hobbs, N.M. 88240

State of New Mexico
 Energy, Minerals & Natural Resources Department

DISTRICT II
 1301 West Grand Avenue, Artesia, N.M. 88210

OIL CONSERVATION DIVISION
 1220 South St. Francis Dr.
 Santa Fe, NM 87505

Submit One Copy To Appropriate
 District Office

DISTRICT III
 1000 Rio Brazos Rd., Aztec, N.M. 87410

AS DRILLED PLAT

AMENDED REPORT

DISTRICT IV
 1220 S. St. Francis Dr., Santa Fe, NM 87505

WELL LOCATION AND ACREAGE DEDICATION PLAT

¹ API Number 30-039-30880	² Pool Code 71599 / 72319	³ Pool Name BASIN DAKOTA/BLANCO MESAVERDE
⁴ Property Code 31739	⁵ Property Name SAN JUAN 28 - 7 UNIT	⁶ Well Number 100N
⁷ GRID No. 217817	⁸ Operator Name CONOCOPHILLIPS COMPANY	⁹ Elevation 6663'

¹⁰ Surface Location

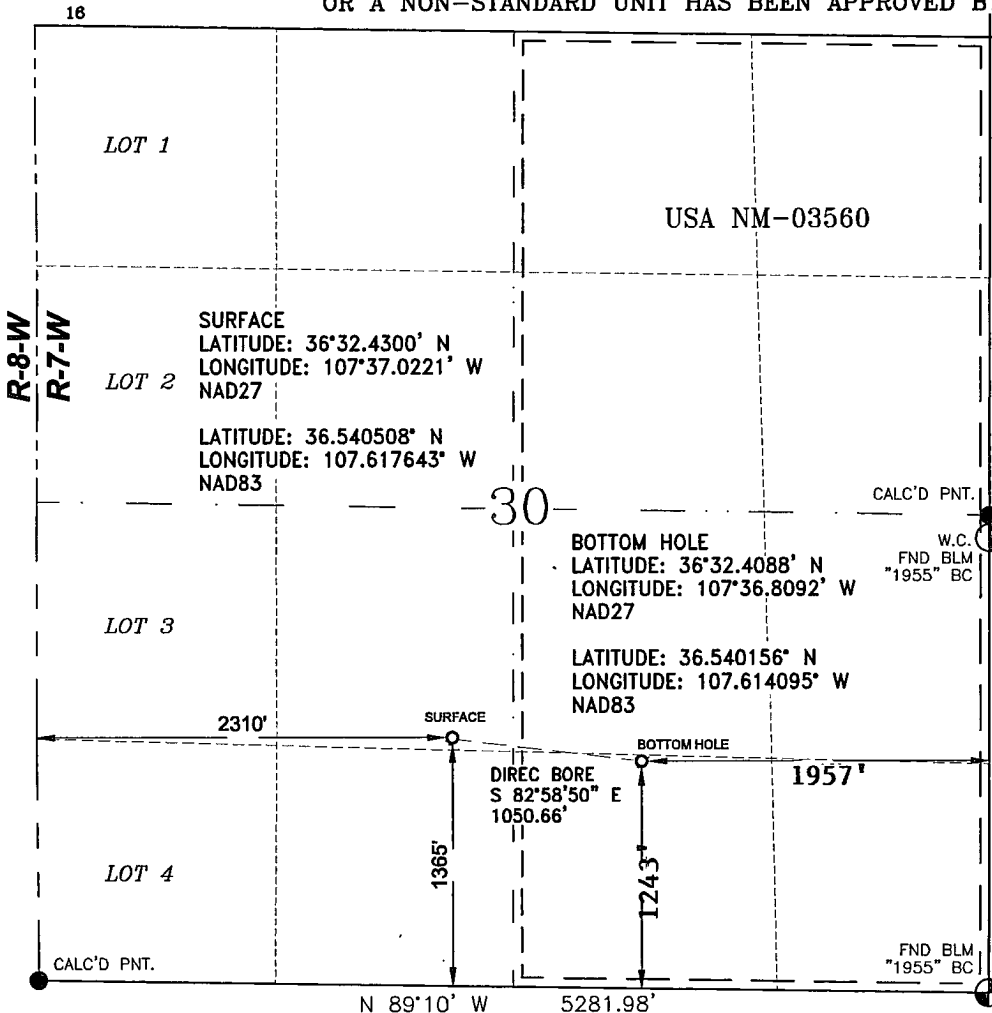
UL or lot no.	Section	Township	Range	Lot Idn	Feet from the	North/South line	Feet from the	East/West line	County
K	30	27-N	7-W		1365	SOUTH	2310	WEST	RIO ARRIBA

¹¹ Bottom Hole Location If Different From Surface

UL or lot no.	Section	Township	Range	Lot Idn	Feet from the	North/South line	Feet from the	East/West line	County
O	30	27-N	7-W		1243'	SOUTH	1957'	EAST	RIO ARRIBA

¹² Dedicated Acres DK 320.00 ACRES E/2 MV 320.00 ACRES E/2	¹³ Joint or Infill	¹⁴ Consolidation Code	¹⁵ Order No.
---	-------------------------------	----------------------------------	-------------------------

NO ALLOWABLE WILL BE ASSIGNED TO THIS COMPLETION UNTIL ALL INTERESTS HAVE BEEN CONSOLIDATED OR A NON-STANDARD UNIT HAS BEEN APPROVED BY THE DIVISION



¹⁷ OPERATOR CERTIFICATION

I hereby certify that the information contained herein is true and complete to the best of my knowledge and belief, and that this organization either owns a working interest or unleased mineral interest in the land including the proposed bottom hole location or has a right to drill this well at this location pursuant to a contract with an owner of such a mineral or a working interest, or to a voluntary pooling agreement or a compulsory pooling order heretofore entered by the division.

Marie E. Jaramillo
 Signature
 Marie E. Jaramillo 12/16/11
 Printed Name

¹⁸ SURVEYOR CERTIFICATION

I hereby certify that the well location shown on this plat was plotted from field notes of actual surveys made by me or under my supervision, and that the same is true and correct to the best of my belief.

10/22/2010
 Date of Survey

Signature and Seal of



GLEN W. RUSSELL
 Certificate Number 15703