

RCVD DEC 27 '11

OIL CONS. DIV.

DIST Form C-102

Revised August 1, 2011

Submit one copy to appropriate

District Office

District I  
1625 N French Dr., Hobbs, NM 88240  
Phone: (575) 393-6161 Fax: (575) 393-0720

District II  
811 S First St., Artesia, NM 88210  
Phone: (575) 748-1283 Fax: (575) 748-9720

District III  
1000 Rio Brazos Road, Aztec, NM 87410  
Phone: (505) 334-6178 Fax: (505) 334-6170

District IV  
1220 S. St. Francis Dr., Santa Fe, NM 87505  
Phone: (505) 476-3460 Fax: (505) 476-3462

State of New Mexico  
Energy, Minerals & Natural Resources Department  
OIL CONSERVATION DIVISION  
1220 South St. Francis Dr.  
Santa Fe, NM 87505

☒ AMENDED REPORT  
**"AS DRILLED"**

## WELL LOCATION AND ACREAGE DEDICATION PLAT

<sup>1</sup> API Number 05-007-06305 30-039-31020	<sup>2</sup> Pool Code 71629	<sup>3</sup> Pool Name Basin Fruitland Coal
<sup>4</sup> Property Code 38469	<sup>5</sup> Property Name NC Ute 23D	<sup>6</sup> Well Number 2H
<sup>7</sup> OGRID No. 216282	<sup>8</sup> Operator Name RED WILLOW PRODUCTION COMPANY	<sup>9</sup> Elevation 6190'

<sup>10</sup> Surface Location

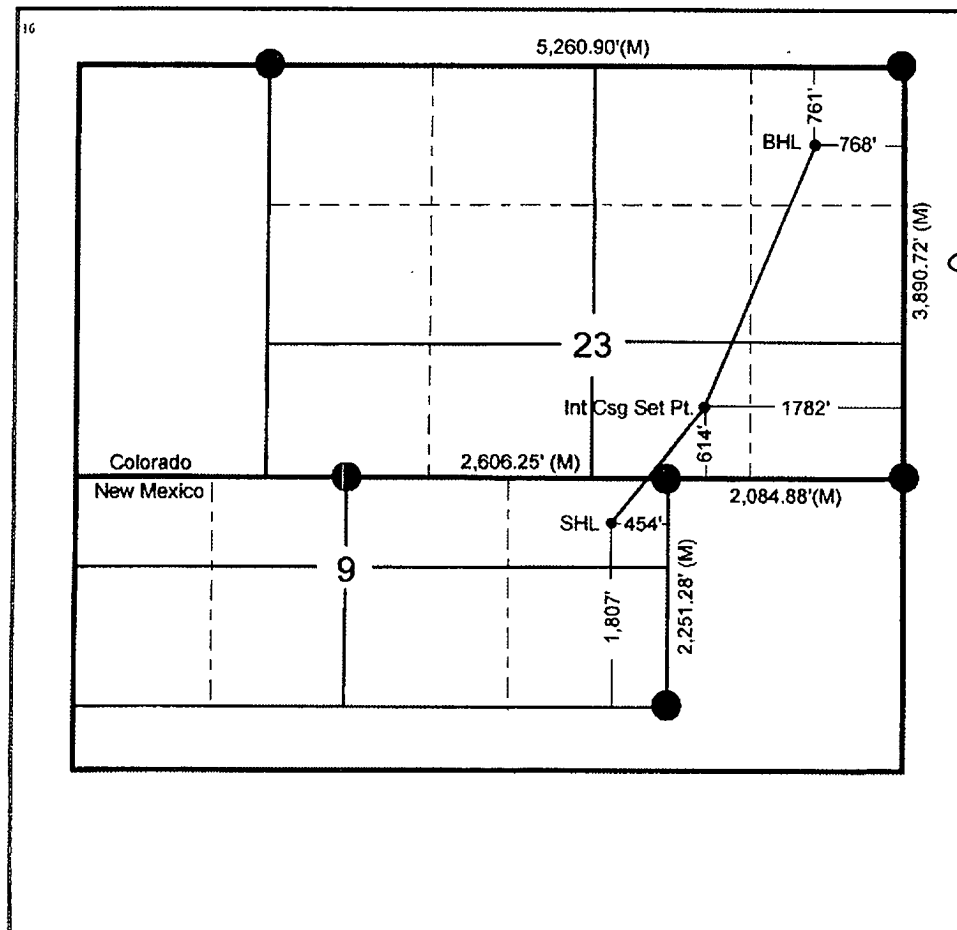
UL or lot no.	Section	Township	Range	Lot Idn	Feet from the	North/South line	Feet from the	East/West line	County
I	9	32N	04W	5	1807'	SOUTH	454'	EAST	Rio Arriba

<sup>11</sup> Bottom Hole Location If Different From Surface

UL or lot no.	Section	Township	Range	Lot Idn	Feet from the	North/South line	Feet from the	East/West line	County
A	23	32N	04W		761'	NORTH	768'	EAST	Archuleta, CO

<sup>12</sup> Dedicated Acres 360 SEC. 23 E/2 E2/W2	<sup>13</sup> Joint or Infill	<sup>14</sup> Consolidation Code	<sup>15</sup> Order No.
--	-------------------------------	----------------------------------	-------------------------

No allowable will be assigned to this completion until all interests have been consolidated or a non-standard unit has been approved by the division.

<sup>17</sup> OPERATOR CERTIFICATION

I hereby certify that the information contained herein is true and complete to the best of my knowledge and belief, and that this organization either owns a working interest or unleased mineral interest in the land including the proposed bottom hole location or has a right to drill this well at this location pursuant to a contract with an owner of such a mineral or working interest, or to a voluntary pooling agreement or a compulsory pooling order heretofore entered by the division.

*Dennis Corkran* 12/12/11  
Signature Date

Dennis Corkran

Printed Name

dcorkran@rwpc.us

E-mail Address

<sup>18</sup> SURVEYOR CERTIFICATION

I hereby certify that the well location shown on this plat was plotted from field notes of actual surveys made by me or under my supervision, and that the same is true and correct to the best of my belief.

Date of Survey

Signature and Seal of Professional Surveyor:

Original survey conducted and recorded by:  
David R. Russell

10201

Certificate Number

A