

**UNITED STATES
DEPARTMENT OF THE INTERIOR
BUREAU OF LAND MANAGEMENT**

Sundry Notices and Reports on Wells

RECEIVED**JAN 23 2012**Farmington Field Office
Bureau of Land Management1. Type of Well
GAS

2. Name of Operator

BURLINGTON

RESOURCES OIL & GAS COMPANY LP

3. Address & Phone No. of Operator

PO Box 4289, Farmington, NM 87499 (505) 326-9700

4. Location of Well, Footage, Sec., T, R, M

Unit H (SENE), 1800' FNL & 1100' FEL, Section 14, T32N, R10W, NMPM

5. Lease Number
SF-0785046. If Indian, All. or
Tribe Name7. Unit Agreement Name
San Juan 32-9 Unit8. Well Name & Number
San Juan 32-9 Unit 62

9. API Well No.

30-045-11450

10. Field and Pool
Blanco Mesaverde11. County and State
San Juan, NM**12. CHECK APPROPRIATE BOX TO INDICATE NATURE OF NOTICE, REPORT, OTHER DATA**

Type of Submission

☒

Notice of Intent

Type of Action

☒

Abandonment

☐ Change of Plans☐ Other -☐

Recompletion

☐ New Construction☐

Subsequent Report

☐

Plugging

☐ Non-Routine Fracturing☐

Final Abandonment

☐

Casing Repair

☐ Water Shut off☐

Final Abandonment

☐

Altering Casing

☐ Conversion to Injection**13. Describe Proposed or Completed Operations**

Burlington Resources Oil & Gas Company, LP requests permission to P&A the subject well per the attached procedure, current and proposed wellbore schematics.

Notify NMOCD 24 hrs
prior to beginning
operations

RCVD JAN 27 '12

OIL CONS. DIV.

DIST. 3

14. I hereby certify that the foregoing is true and correct.Signed Crystal Tafoya Crystal Tafoya

Title: Staff Regulatory Technician

Date 1/23/2012

(This space for Federal or State Office use)

APPROVED BY

Title

Date

JAN 25 2012Original Signed: Stephen Mason
CONDITION OF APPROVAL, if any:

Title 18 U.S.C. Section 1001, makes it a crime for any person knowingly and willfully to make any department or agency of the United States any false, fictitious or fraudulent statements or representations as to any matter within its jurisdiction

NMOCD

A

ConocoPhillips
SAN JUAN 32-9 UNIT 62
Expense - P&A

Lat 36° 59' 13.2" N

Long 107° 50' 49.164" W

PROCEDURE

This project requires a NMOCD C-144 CLEZ Closed-Loop System Permit for the use of an A-Plus steel tank to handle waste fluids circulated from the well and cement wash up.

1. Hold pre-job safety meeting. Comply with all NMOCD, BLM, and COPC safety and environmental regulations. Test rig anchors prior to moving in rig.
2. MIRU work over rig. Check casing, tubing, and bradenhead pressures and record them in Wellview.
3. When an existing primary valve (i.e. casing valve) is to be used, the existing piping should be removed and replaced with the appropriate piping for the intended operation.
4. RU blow lines from casing valves and begin blowing down casing pressure. Kill well with water, as necessary, and at least pump tubing capacity of water down tubing.
5. ND wellhead and NU BOPE. Function test BOP. PU and remove tubing hanger.

6. TOOH with tubing LD tubing bailer (if applicable). Modify the work sequence as appropriate to account for the packer.

Rods:	No	Size:	----	Length:	---
Tubing:	Yes	Size:	2-3/8"	Length:	5897
Packer:	Yes	Size:	4-1/2"	Depth:	5107

7. Round trip casing scraper to top perforation (location at 5668') or as deep as possible.

8. RIH and set 5 1/2" CR at 5618'. Load hole. Pressure test tubing to 1000 psi. Pressure test casing. If casing does not test, spot and tag subsequent plug as necessary. TOH with tubing and stinger. Run CBL to surface (plug depths may change per CBL).

All cement volumes use 100% excess outside pipe and 50' excess inside pipe. The stabilizing wellbore fluid will be 8.3 ppg, sufficient to balance all exposed formation pressures. All cement will be ASTM Type II mixed at 15.6 ppg with a 1.18 cf/sk yield.

Please note that Plug 4 will require 231 sx of cement.

9. Plug 1 (Mesa Verde Perfs and Top, 5408-5618', 30 Sacks Class B Cement)

TIH open ended with tubing to CR @5618'. Load casing and circulate well clean. Mix 30 sx Class B cement and spot above CR to isolate the Mesa Verde perfs & formation top. PUH.

4264 4164

10. Plug 2 (Chacra Top, ~~4639-4739~~ 4164', 17 Sacks Class B Cement)

Mix 17 sxs of Class B cement and spot a balanced plug to cover the Chacra formation top. PUH.

11. Plug 3 (Pictured Cliffs Top, Liner Top, and Intermediate Shoe, 3423-3858', 109 Sacks Class B Cement)

Mix 98 sxs of Class B cement and spot a balanced plug to cover the Pictured Cliffs formation top and Liner top. POOH.

3146 3046

12. Plug 4 (Fruitland Top, ~~Ojo Alamo Top & Kirtland Top, 2568-2940~~ 2940', 201 Sacks Class B Cement)

Perforate 2 holes at 2940'. Establish rate into squeeze holes. RIH and set 7 5/8" CR at 2890'. Mix 201 sxs Class B cement, squeeze 136 sxs behind casing and leave 95 sxs inside casing to isolate the Fruitland formation Top, Ojo Alamo formation Top & Kirtland formation Top. POOH.

Kirtland plug (Ojo Alamo not present) 1918 - 1818 inside annulus 7 5/8" CR

13. Plug 5 (Nacimiento Top, ~~1745-1845~~ 1845', 71 Sacks Class B Cement)

Perforate 2 holes at 1845'. Establish rate into squeeze holes. RIH and set 7 5/8" CR at 1765'. Mix 71 sxs Class B cement, squeeze 37 sxs behind casing and leave 34 sxs inside casing to isolate the Nacimiento Top. POOH.

14 Plug 6 (Surface Shoe, 0-221', 125 Sacks Class B Cement)

Perforate 2 holes at 221'. Establish circulation out bradenhead with water and circulate the BH annulus clean. Mix 125 sxs Class B cement and pump down production casing to circulate good cement out bradenhead.

15. Nipple down BOP and cut off casing below the casing flange. Install P&A marker with cement to comply with regulations. Rig down, move off location, cut off anchors, and restore location.

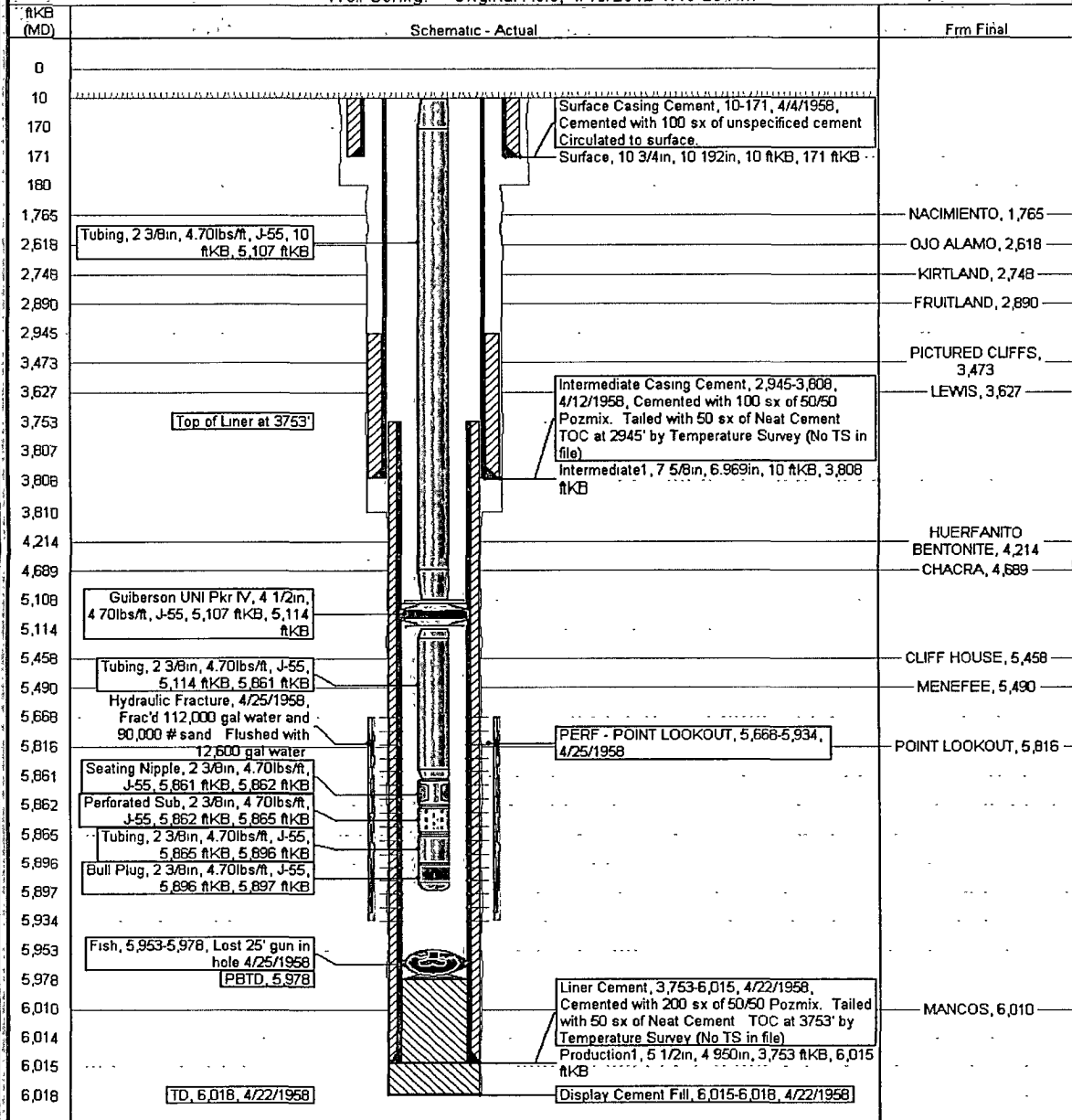
Current Schematic

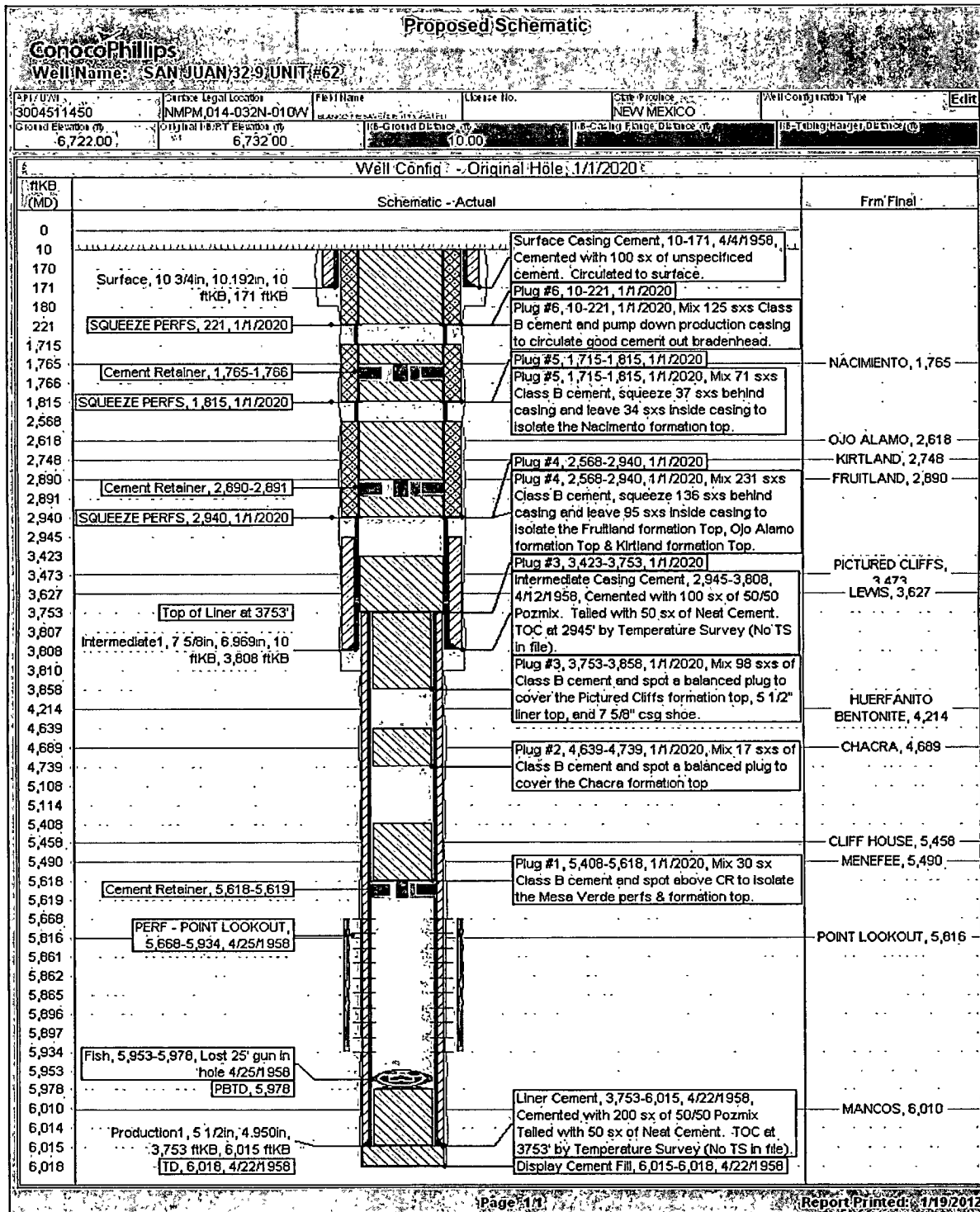
ConocoPhillips

Well Name: SAN JUAN 32-9 UNIT #62

API / UWI	Surface Legal Location	Field Name	License No.	State/Province	Well Configuration Type	Edit
3004511450	NMPM,014-032N-010W	BLANCO MESA VERDE (PROBATION) OAS		NEW MEXICO		
Ground Elevation (ft)	Original KB/RT Elevation (ft)	KB Ground Distance (ft)	KB Casing/Flange Distance (ft)	KB Tubing/Hanger Distance (ft)		
6,722.00	6,732.00	10.00				

Well Config. - Original Hole, 1/19/2012 1:46:26 PM





**UNITED STATES DEPARTMENT OF THE INTERIOR
BUREAU OF LAND MANAGEMENT
FARMINGTON DISTRICT OFFICE
1235 LA PLATA HIGHWAY
FARMINGTON, NEW MEXICO 87401**

Attachment to notice of
Intention to Abandon:

Re: Permanent Abandonment
Well: 62 San Juan 32-9 Unit

CONDITIONS OF APPROVAL

1. Plugging operations authorized are subject to the attached "General Requirements for Permanent Abandonment of Wells on Federal and Indian Lease."
2. Farmington Office is to be notified at least 24 hours before the plugging operations commence (505) 599-8907.
3. The following modifications to your plugging program are to be made:
 - a) Place the Chacra plug from 4264' – 4164'.
 - b) Place the Fruitland plug from 3140' – 3040'.
 - c) Place the Kirtland plug from 1918' – 1818' inside and outside the 7 5/8" casing.
 - d) Place the Nacimiento plug from 711' – 611' inside and outside the 7 5/8" casing.

Note: Ojo Alamo is not present or recognizable on logs in this well.

You are also required to place cement excesses per 4.2 and 4.4 of the attached General Requirements.

Office Hours: 7:45 a.m. to 4:30 p.m.