

**UNITED STATES
DEPARTMENT OF THE INTERIOR
BUREAU OF LAND MANAGEMENT**

RECEIVED**JAN 10 2012**

Sundry Notices and Reports on Wells

Farmington Field Office
Bureau of Land Management

- | | |
|--|---|
| <p>1. Type of Well
GAS</p> <p>2. Name of Operator
BURLINGTON
RESOURCES OIL & GAS COMPANY LP</p> <p>3. Address & Phone No. of Operator

PO Box 4289, Farmington, NM 87499 (505) 326-9700</p> <p>4. Location of Well, Footage, Sec., T, R, M

Unit G (SWNE), 1500' FNL & 1800' FEL, Section 27, T26N, R6W, NMPM</p> | <p>5. Lease Number
SF-079266</p> <p>6. If Indian, All. or Tribe Name</p> <p>7. Unit Agreement Name</p> <p>8. Well Name & Number
Vaughn 19</p> <p>9. API Well No.

30-039-20505</p> <p>10. Field and Pool
South Blanco PC/Otero CH</p> <p>11. County and State
Rio Arriba, NM</p> |
|--|---|

12. CHECK APPROPRIATE BOX TO INDICATE NATURE OF NOTICE, REPORT, OTHER DATA

Type of Submission	Type of Action	
<input checked="" type="checkbox"/> Notice of Intent	<input type="checkbox"/> Abandonment	<input type="checkbox"/> Change of Plans
<input type="checkbox"/> Subsequent Report	<input type="checkbox"/> Recompletion	<input type="checkbox"/> New Construction
<input type="checkbox"/> Final Abandonment	<input type="checkbox"/> Plugging	<input type="checkbox"/> Non-Routine Fracturing
	<input type="checkbox"/> Casing Repair	<input type="checkbox"/> Water Shut off
	<input type="checkbox"/> Altering Casing	<input type="checkbox"/> Conversion to Injection

☒ Other - ☐ Plugback CH

RCVD JAN 19 '12

OIL CONS. DIV.

DIST. 3

13. Describe Proposed or Completed Operations

Burlington Resources requests permission to plugback the Chacra formation in the subject well per the attached procedure, current and proposed wellbore schematics.

**SEE ATTACHED FOR
CONDITIONS OF APPROVAL**

14. I hereby certify that the foregoing is true and correct.

Signed Crystal Tafoya Crystal Tafoya Title: Staff Regulatory Technician Date 1/10/2012

(This space for Federal or State Office use)

APPROVED BY Petr Eng. Title Petr Eng. Date 1/13/12

CONDITION OF APPROVAL, if any:

Title 18 U.S.C. Section 1001, makes it a crime for any person knowingly and willfully to make any department or agency of the United States any false, fictitious or fraudulent statements or representations as to any matter within its jurisdiction

NMOCD

ConocoPhillips
VAUGHN 19
Expense - P&A

Lat 36° 27' 38.952" N

Long 107° 27' 6.804" W

PROCEDURE

NMOCD MUST BE CONTACTED 35 HOURS IN ADVANCE.

All cement volumes use 130% excess inside pipe. The stabilizing wellbore fluid will be 8.3 ppg, sufficient to balance all exposed formation pressures. All cement will be Class B, mixed at 15.6 ppg with a 1.18 cf/sx yield.

The project requires the Operator to obtain an approved NMOCD C-144 CLEX Closed-Loop System Permit for the use of an A-Plus steel tank to handle waste fluids circulated from the well and cement wash up.

1. Prepare blow pit. Comply with all NMOCD, BLM, and Operator safety regulations. Conduct safety meeting for all personnel on location. NU relief line. Blow down well and kill with water as necessary. ND wellhead and install valve.

2. When an existing primary valve (i.e. casing valve) is to be used, the existing piping should be removed and replaced with the appropriate piping for the intended operation.

3. Open bradenhead valve. Establish rate down 2 7/8" casing with 20 bbls water, record pump rate and pressure. Monitor pressure on PC side for communication. If communication is apparent, contact production engineer. Monitor bradenhead for flow. If no flow or blow, then pump 30 - 7/8" RCN balls and additional water and monitor pressure, rate and volumes pumped, to confirm perforations are taking water and there is not a casing leak. If the bradenhead flows water or there are other indications of a casing leak, then MO and RU pulling unit to use 1-1/4" IJ tubing workstring to plug this well.

4. Blow down pressure on wellhead and temporarily allow well to flow back to unseat RCN balls. Run junk basket and retrieve RCN balls. Count the retrieved balls to ensure sufficient injectivity for cementing operations. If necessary, run the junk basket a second time.

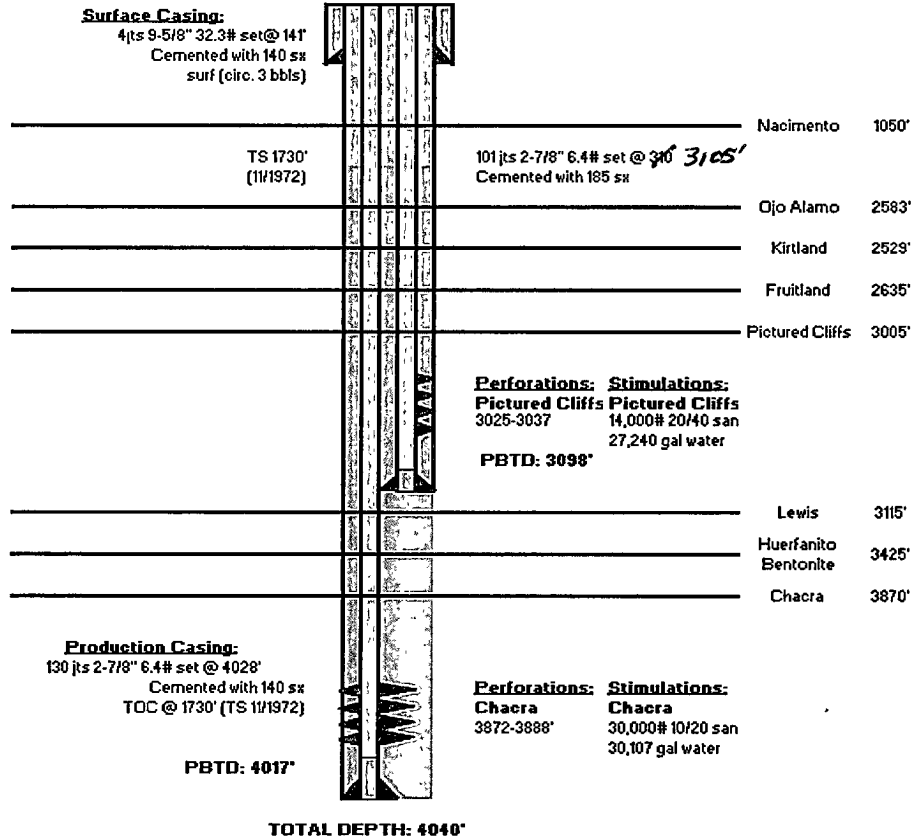
5. Plug #1 (Chacra perforations and Pictured Cliffs, Fruitland, Kirtland, Ojo Alamo tops, 4017' - Surface')

Establish rate into CH perforations with water. Mix and pump total of 144 sxs cement (long plug, 30% excess) and bullhead down the 2.875" casing: first pump 8 sx cement, then drop 30 - 7/8" RCN balls, then pump 136 sxs cement and do not displace. Double valve and shut in well. WOC.

6. Tag cement. Fill remaining wellbore with cement to surface, as needed.

7. ND BOPE & NU wellhead. RDMO.

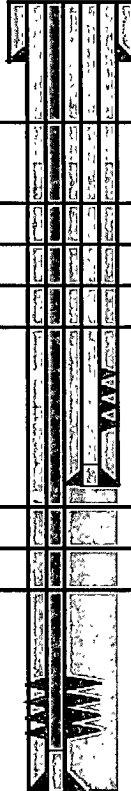
Current wellbore as of 5/19/2011



Proposed wellbore

Surface Casing:

4jts 8-5/8" 32.3# set @ 141'
Cemented with 140 sx
surf (circ. 3 bbls)



TS 1730'
(11/1972)

101jts 2-7/8" 6.4# set @ 310
Cemented with 185 sx

Nacimiento 1050'

Ojo Alamo 2583'

Kirtland 2529'

Fruitland 2635'

Pictured Cliffs 3005'

Plug 1:

Mix and pump 144 sx cement
plugging Chacra perforations
to surface.

Perforations: **Stimulations:**
Pictured Cliffs **Pictured Cliffs**
3025-3037 14,000# 20/40 san
27,240 gal water

PBTD: 3098'

Lewis 3115'

Huerfano 3425'

Bentonite

Chacra 3870'

Production Casing:

130jts 2-7/8" 6.4# set @ 4028'
Cemented with 140 sx
TOC @ 1730' (TS 11/1972)

Perforations: **Stimulations:**
Chacra **Chacra**
3872-3888' 30,000# 10/20 san
30,107 gal water

PBTD: 4017'

TOTAL DEPTH: 4040'

BLM CONDITIONS OF APPROVAL

Plugback Operations:

- 1. A properly functioning BOP and related equipment must be installed prior to commencing casing repair, workover and/or recompletion operations.**
- 2. This well is in a Seasonal Closure Area, adhere to closure stipulations from May 1 thru July 15.**

SURFACE USE OPERATIONS:

The failure of operator to comply with these requirements may result in assessments or penalties pursuant to 43 CFR 3163.1 or 3163.2. A copy of these conditions of approval shall be present on location during construction, drilling and reclamation activity.

STANDARD STIPULATIONS: All surface areas disturbed during work-over activities and not in use for production activities will be reseeded. This should occur in the first 90 days after completion of work-over activities.

SPECIAL STIPULATIONS:

- 1. Pits will be fenced during work-over operation.**
- 2. All disturbance will be kept on existing pad.**
- 3. All pits will be pulled and closed immediately upon completion of the work-over activities.**
- 4. Pits will be lined with an impervious material at least 12 mils thick.**