

**UNITED STATES
DEPARTMENT OF THE INTERIOR
BUREAU OF LAND MANAGEMENT**

RECEIVED**JAN 27 2012**

Sundry Notices and Reports on Wells

Farmington Field Office
Bureau of Land Management

Lease Number
NM-0138616. If Indian, All. or
Tribe Name

7. Unit Agreement Name

1. Type of Well
GAS

2. Name of Operator

BURLINGTON
RESOURCES OIL & GAS COMPANY LP

3. Address & Phone No. of Operator

PO Box 4289, Farmington, NM 87499 (505) 326-9700

8. Well Name & Number
Grambling A 3A

9. API Well No.

30-045-26411

4. Location of Well, Footage, Sec., T, R, M

Surface: Unit D (NWNW), 1100' FNL & 820' FWL, Section 28, T28N, R8W, NMPM

10. Field and Pool
Blanco MV / Otero Chacra /
Basin FC11. County and State
San Juan, NM**12. CHECK APPROPRIATE BOX TO INDICATE NATURE OF NOTICE, REPORT, OTHER DATA**

Type of Submission

Type of Action

☒ Notice of Intent☐ Abandonment☐ Change of Plans☒ Other -☐ Subsequent Report☒ Recompletion☐ New Construction☐ Final Abandonment☐ Plugging☐ Non-Routine Fracturing☐ Casing Repair☐ Water Shut off☐ Altering Casing☐ Conversion to Injection**13. Describe Proposed or Completed Operations**

Burlington Resources would like to recompleate the Fruitland Coal formation per the attached procedure and wellbore schematic. Fruitland Coal plat is also attached. A C-107A will be filed as soon as possible to DHC.

14. I hereby certify that the foregoing is true and correct.

OIL CONS. DIV.

DIST. 3

Signed

Dollie L. Busse

Title Staff Regulatory Technician

Date 1-27-12

(This space for Federal or State Office use)

APPROVED BY Original Signed: Stephen Mason TitleDate **JAN 30 2012**

CONDITION OF APPROVAL, if any:

Title 18 U.S.C. Section 1001, makes it a crime for any person knowingly and willfully to make any department or agency of the United States any false, fictitious or fraudulent statements or representations as to any matter within its jurisdiction

NMOC

A

PC

Grambling A #3A

**Unit D, Section 28, Township 28N, Range 8W
San Juan County, NM
API#: 3004526411**

**Fruitland Coal Recompletion Sundry
Revised
1/13/2012**

Procedure:

1. MIRU service rig. TOOH with 2-3/8" tubing string.
2. MIRU wireline unit. RIH with a gauge ring for 4-1/2" 10.5# casing. POOH. RIH with a composite bridge plug and set at +/- 2600'
3. MIRU wireline to run a GR/CCL/CBL log from 2550' to surface. The CBL will be used to determine an accurate TOC. The GR will be used to locate formation tops and will help determine if remedial cement work will be needed.
4. Perforate and frac the Fruitland Coal.
5. Open well to flow back frac on clean-up.
6. RIH with tubing / mill assembly. Clean out to the plug.
7. Flowtest FC up the annulus on a 1/2" choke to atmosphere.
8. Once test is complete RIH and drill out the plug @ 2550' with air / mist.
9. TIH and cleanout to PBTD @ 4795'. Land production tubing and obtain a commingled flowrate up the annulus on a 1/2" choke.
10. Release service rig and turn over commingled well to production.

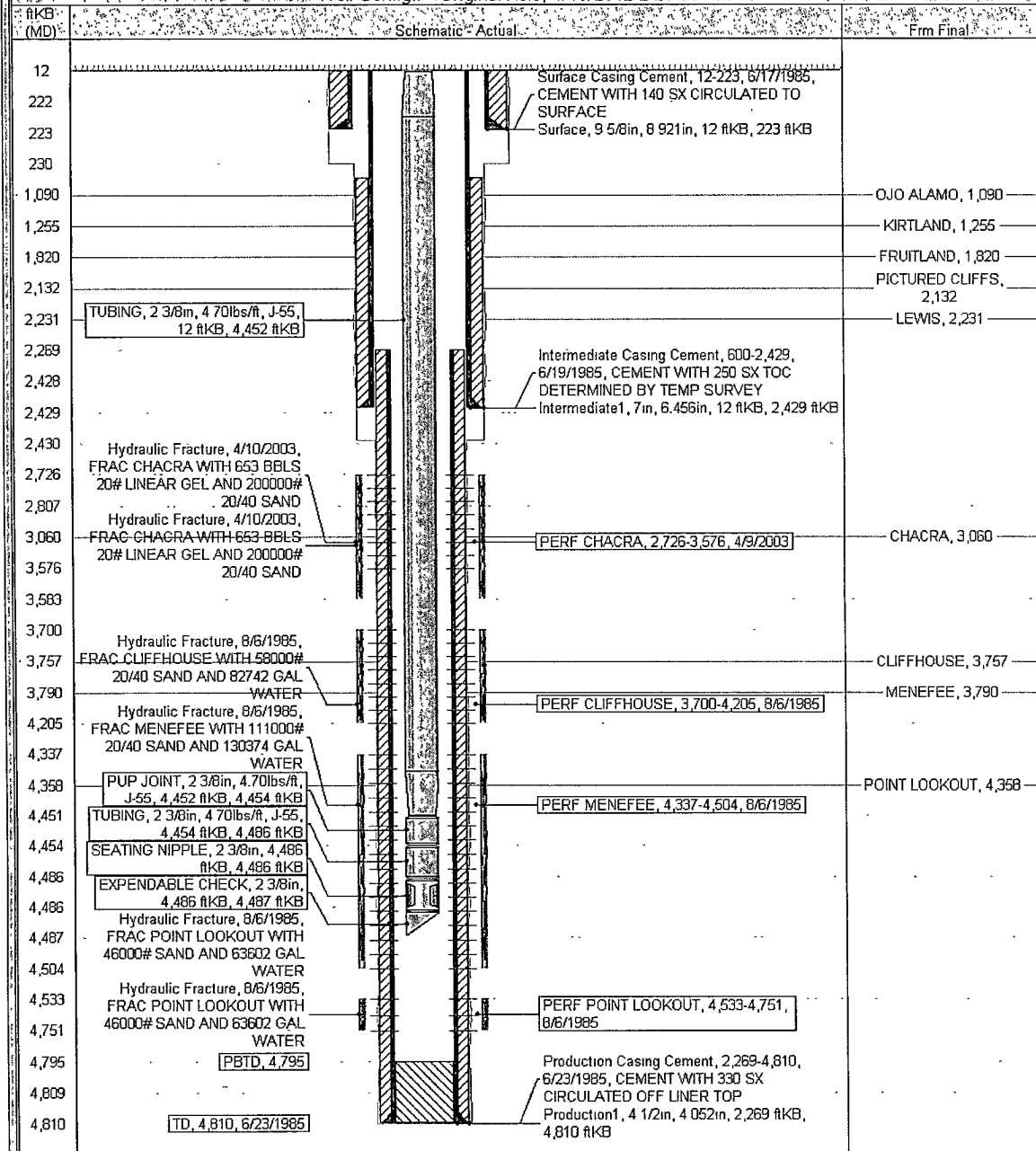
Current Schematic

ConocoPhillips

Well Name: GRAMBLING A #3A

API / UWI	Surface Legal Location	Field Name	License No.	State/Province	Well Configuration Type	Edit
3004526411	NMPM 028-028N-008W	ELANCO MESA VERDE (P/N) RATER OMS		NEW MEXICO		
Ground Elevation (ft)	Original KB/RT Elevation (ft)	KB-Ground Distance (ft)	KB-Casing Flange Distance (ft)	KB-Tubing Hanger Distance (ft)		
5,755.00	5,767.00	12.00	5,767.00	5,767.00		

Well Config - Original Hole: 1/13/2012 2:23:31 PM



District I
1625 N. French Dr., Hobbs, NM 88240
Phone:(575) 393-6161 Fax:(575) 393-0720
District II
811 S. First St., Artesia, NM 88210
Phone:(575) 748-1283 Fax:(575) 748-9720
District III
1000 Rio Brazos Rd., Aztec, NM 87410
Phone:(505) 334-6178 Fax:(505) 334-6170
District IV
1220 S. St Francis Dr., Santa Fe, NM 87505
Phone:(505) 476-3470 Fax:(505) 476-3462

State of New Mexico
Energy, Minerals and Natural Resources
Oil Conservation Division
1220 S. St Francis Dr.
Santa Fe, NM 87505

Form C-102
August 1, 2011
Permit 143340

WELL LOCATION AND ACREAGE DEDICATION PLAT

1. API Number 30-045-26411	2. Pool Code 71629	3. Pool Name BASIN FRUITLAND COAL (GAS)
4. Property Code 7055	5. Property Name GRAMBLING A	6. Well No. 003A
7. OGRID No. 14538	8. Operator Name BURLINGTON RESOURCES OIL & GAS COMPANY LP	9. Elevation 5755

10. Surface Location

UL - Lot D	Section 28	Township 28N	Range 08W	Lot Idn	Feet From 1100	N/S Line N	Feet From 820	E/W Line W	County SAN JUAN
---------------	---------------	-----------------	--------------	---------	-------------------	---------------	------------------	---------------	--------------------

11. Bottom Hole Location If Different From Surface

UL - Lot	Section	Township	Range	Lot Idn	Feet From	N/S Line	Feet From	E/W Line	County
12. Dedicated Acres 320.00		13. Joint or Infill		14. Consolidation Code		15. Order No.			

NO ALLOWABLE WILL BE ASSIGNED TO THIS COMPLETION UNTIL ALL INTERESTS HAVE BEEN CONSOLIDATED OR A NON-STANDARD UNIT HAS BEEN APPROVED BY THE DIVISION

	OPERATOR CERTIFICATION	
	<p><i>I hereby certify that the information contained herein is true and complete to the best of my knowledge and belief, and that this organization either owns a working interest or unleased mineral interest in the land including the proposed bottom hole location(s) or has a right to drill this well at this location pursuant to a contract with an owner of such a mineral or working interest, or to a voluntary pooling agreement or a compulsory pooling order heretofore entered by the division.</i></p>	
	<p>E-Signed By: <i>Dallie J. Busse</i> Title: Staff Regulatory Technician Date: 1/20/12</p>	
	SURVEYOR CERTIFICATION	
<p><i>I hereby certify that the well location shown on this plat was plotted from field notes of actual surveys made by me or under my supervision, and that the same is true and correct to the best of my belief.</i></p>		
<p>Surveyed By: Fred Kerr Date of Survey: 7/29/1980 Certificate Number:</p>		