

**UNITED STATES  
DEPARTMENT OF THE INTERIOR  
BUREAU OF LAND MANAGEMENT**

**RECEIVED****JAN 23 2012**

Sundry Notices and Reports on Wells

Farmington Field Office  
Bureau of Land Management

1. **Type of Well**  
GAS

6. **Lease Number**  
SF-079012  
**If Indian, All. or  
Tribe Name**

2. **Name of Operator**

7. **Unit Agreement Name**  
San Juan 31-6 Unit

**ConocoPhillips**

3. **Address & Phone No. of Operator**

8. **Well Name & Number**  
San Juan 31-6 Unit 4R

PO Box 4289, Farmington, NM 87499 (505) 326-9700

9. **API Well No.**

30-039-30593

4. **Location of Well, Footage, Sec., T, R, M**

10. **Field and Pool**  
Blanco MV/Basin DK/  
Basin Mancos

Surface: Unit G (SWNE), 2165' FNL & 1815' FEL, Section 4, T30N, R6W, NMPM

11. **County and State**  
Rio Arriba, NM

**12. CHECK APPROPRIATE BOX TO INDICATE NATURE OF NOTICE, REPORT, OTHER DATA****Type of Submission****Type of Action**

☒ Notice of Intent

☐ Abandonment

☐ Change of Plans

☒ Other - Add Mancos

☐ Subsequent Report

☐ Recompletion

☐ New Construction

**RCVD JAN 30 '12**

☐ Final Abandonment

☐ Plugging

☐ Non-Routine Fracturing

**OIL CONS. DIV.**

☐ Casing Repair

☐ Water Shut off

☐ Altering Casing

☐ Conversion to Injection

**DIST. 3**

**13. Describe Proposed or Completed Operations**

ConocoPhillips would also like to complete the Basin Mancos formations and trimingle production on this well (DK/MV/Mancos). Attached is a new plat that includes the Basin Mancos and C107A will be submitted and approval received before the well is commingled.

**BLM'S APPROVAL OR ACCEPTANCE OF THIS  
ACTION DOES NOT RELIEVE THE LESSEE AND  
OPERATOR FROM OBTAINING ANY OTHER  
AUTHORIZATION REQUIRED FOR OPERATIONS  
ON FEDERAL AND INDIAN LANDS**

**14. I hereby certify that the foregoing is true and correct.**

Signed

*Arleen Kellywood*

Arleen Kellywood

Title Staff Regulatory TechnicianDate 1/23/12

(This space for Federal or State Office use)

APPROVED BY Troy L. SalvorsTitle Petroleum EngineerDate 1/26/2012

CONDITION OF APPROVAL, if any:

Title 18 U S C Section 1001, makes it a crime for any person knowingly and willfully to make any department or agency of the United States any false, fictitious or fraudulent statements or representations as to any matter within its jurisdiction

**CONDITIONS OF APPROVAL**

Adhere to previously issued stipulations.

**AMOC***fc*

DISTRICT I  
1625 N. French Dr., Hobbs, N.M. 88240

DISTRICT II  
1301 West Grand Avenue, Artesia, N.M. 88210

DISTRICT III  
1000 Rio Brazos Rd., Aztec, N.M. 87410

DISTRICT IV  
1220 S. St. Francis Dr., Santa Fe, NM 87505

State of New Mexico  
Energy, Minerals & Natural Resources Department

OIL CONSERVATION DIVISION

1220 South St. Francis Dr.  
Santa Fe, NM 87505

Form C-102  
Revised October 12, 2005

Submit to Appropriate District Office  
State Lease - 4 Copies  
Fee Lease - 3 Copies

JAN 23 2012

☒ AMENDED REPORT

WELL LOCATION AND ACREAGE DEDICATION PLAT

<sup>1</sup> API Number 30-039-30593	<sup>2</sup> Pool Code 71599/72319/97232	<sup>3</sup> Pool Name BASIN DAKOTA/BLANCO MESAVERDE/BASIN MANCOS
<sup>4</sup> Property Code 31328	<sup>5</sup> Property Name SAN JUAN 31-6 UNIT	<sup>6</sup> Well Number 4R
<sup>7</sup> GRID No. 217817	<sup>8</sup> Operator Name CONOCOPHILLIPS COMPANY	<sup>9</sup> Elevation 6439'

<sup>10</sup> Surface Location

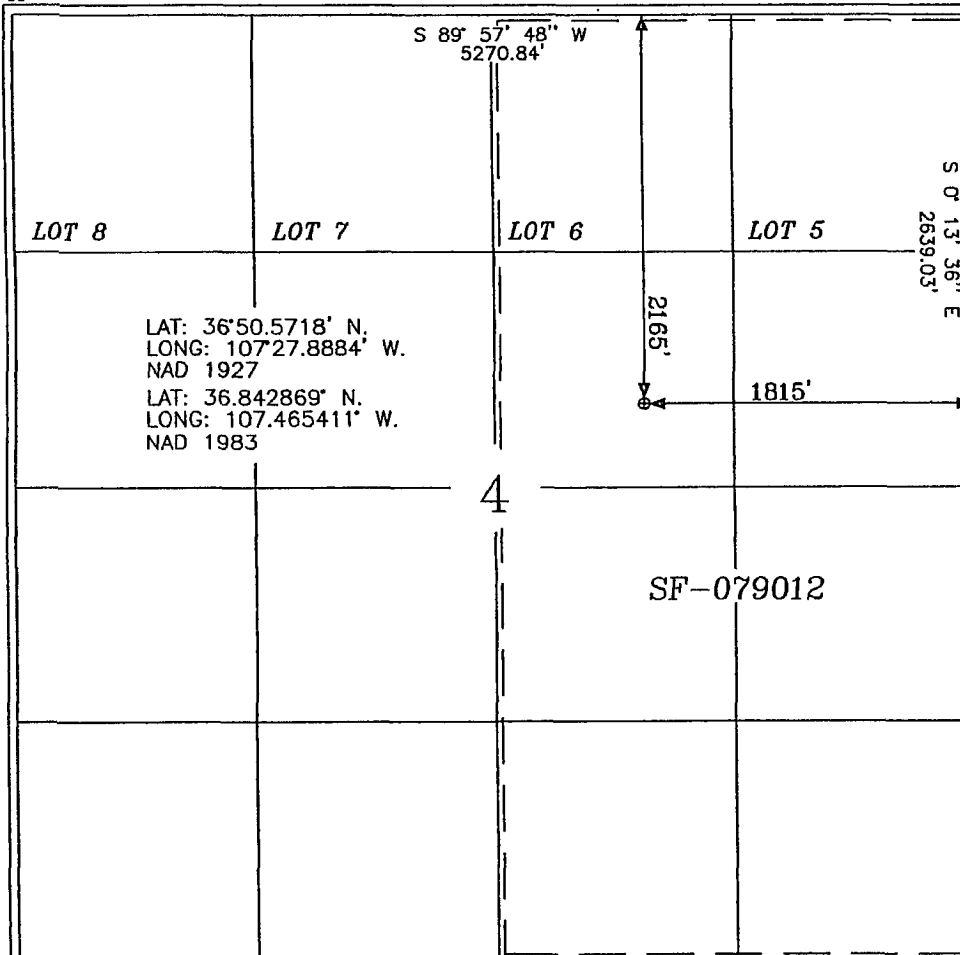
UL or lot no.	Section	Township	Range	Lot Idn	Feet from the	North/South line	Feet from the	East/West line	County
G	4	30-N	6-W		2165'	NORTH	1815'	EAST	RIO ARRIBA

<sup>11</sup> Bottom Hole Location If Different From Surface

UL or lot no.	Section	Township	Range	Lot Idn	Feet from the	North/South line	Feet from the	East/West line	County
<sup>12</sup> Dedicated Acres MC 320 E/2 DK 320.0 ACRES E/2 MV 320.0 ACRES E/2					<sup>13</sup> Joint or Infill	<sup>14</sup> Consolidation Code	<sup>15</sup> Order No.		

NO ALLOWABLE WILL BE ASSIGNED TO THIS COMPLETION UNTIL ALL INTERESTS HAVE BEEN CONSOLIDATED  
OR A NON-STANDARD UNIT HAS BEEN APPROVED BY THE DIVISION

16



<sup>17</sup> OPERATOR CERTIFICATION

I hereby certify that the information contained herein is true and complete to the best of my knowledge and belief, and that this organization either owns a working interest or unleased mineral interest in the land including the proposed bottom hole location or has a right to drill this well at this location pursuant to a contract with an owner of such a mineral or a working interest, or to a voluntary pooling agreement or a compulsory pooling order heretofore entered by the division.

*Arleen Kellywood* 1/23/12  
Signature  
Arleen Kellywood  
Printed Name

<sup>18</sup> SURVEYOR CERTIFICATION

I hereby certify that the well location shown on this plat was plotted from field notes of actual surveys made by me or under my supervision, and that the same is true and correct to the best of my belief.

3-70-028  
Date of Survey  
Signature and Seal of Professional Surveyor  
Certificate Number 15703

