

UNITED STATES  
DEPARTMENT OF THE INTERIOR  
BUREAU OF LAND MANAGEMENT

APPLICATION FOR PERMIT TO DRILL, DEEPEN, OR PLUG BACK

1a. Type of Work DRILL	2005 FEB 14 AM 8 53 RECEIVED 070 FARMINGTON NM	5. Lease Number NMSF-077842 Unit Reporting Number
1b. Type of Well GAS		6. If Indian, All. or Tribe
2. Operator <b>BURLINGTON</b> RESOURCES OIL & GAS COMPANY LP		7. Unit Agreement Name San Juan 29-7 Unit
3. Address & Phone No. of Operator PO Box 4289, Farmington, NM 87499 (505) 326-9700		8. Farm or Lease Name San Juan 29-7 Unit 9. Well Number 194
4. Location of Well 1600' FNL, 1910' FWL  Latitude 36° 43.7164, Longitude 107° 33.6121		10. Field, Pool, Wildcat Basin Fruitland Coal/ Blanco Pictured Cliffs 11. Sec., Twn, Rge, Mer. (NMPM) F Sec. 15, T-29-N, R-7-W API # 30-039-29459
14. Distance in Miles from Nearest Town 17 miles from Blanco	12. County Rio Arriba	13. State NM
15. Distance from Proposed Location to Nearest Property or Lease Line 1600'		
16. Acres in Lease	17. Acres Assigned to Well FC - 320 W/2 PC - 160	
18. Distance from Proposed Location to Nearest Well, Drig, Compl, or Applied for on this Lease 76'		
19. Proposed Depth 3234'	20. Rotary or Cable Tools Rotary	
21. Elevations (DF, FT, GR, Etc.) 6212' GR	22. Approx. Date Work will Start	
23. Proposed Casing and Cementing Program See Operations Plan attached		
24. Authorized by: <i>Nancy Oltmann</i> Senior Staff Regulatory Specialist		2-10-05 Date

PERMIT NO.

APPROVAL DATE

APPROVED BY *[Signature]*

TITLE *AFM*

DATE *3-23-05*

Archaeological Report attached

Threatened and Endangered Species Report attached

NOTE: This format is issued in lieu of U.S. BLM Form 3160-3

Title 18 U.S.C. Section 1001, makes it a crime for any person knowingly and willfully to make to any department or agency of the United States any false, fictitious or fraudulent statements or presentations as to any matter within its jurisdiction.

No HPA notification required under Order R-8768F

DRILLING OPERATIONS AUTHORIZED AND  
SUBJECT TO COMPLIANCE WITH ATTACHED  
"GENERAL REQUIREMENTS".

NMOCED

This action is subject to technical and  
procedural review pursuant to 43 CFR 3165.3  
and appeal pursuant to 43 CFR 3165.4

DISTRICT I  
1825 N. French Dr., Hobbs, N.M. 88240

DISTRICT II  
811 South First, Artesia, N.M. 88210

DISTRICT III  
1000 Rio Brazos Rd., Aztec, N.M. 87410

DISTRICT IV  
2040 South Pacheco, Santa Fe, NM 87505

State of New Mexico  
Energy, Minerals & Natural Resources Department

Form C-102  
Revised August 15, 2000

Submit to Appropriate District Office  
State Lease - 4 Copies  
Fee Lease - 3 Copies

OIL CONSERVATION DIVISION

2040 South Pacheco  
Santa Fe, NM 87505

2005 FEB 14 AM 8 53 ☐ AMENDED REPORT

WELL LOCATION AND ACREAGE DEDICATION PLAT

<sup>1</sup> API Number 30--039- <b>29459</b>	<sup>2</sup> Pool Code 72359 /71629	<sup>3</sup> Pool Name 070 FARMINGTON NM Blanco Pictured Cliffs/ Basin Fruitland Coal
<sup>4</sup> Property Code 7465	<sup>5</sup> Property Name SAN JUAN 29-7 UNIT	<sup>6</sup> Well Number 194
<sup>7</sup> OGRID No. 14538	<sup>8</sup> Operator Name BURLINGTON RESOURCES OIL AND GAS COMPANY LP	<sup>9</sup> Elevation 6212'

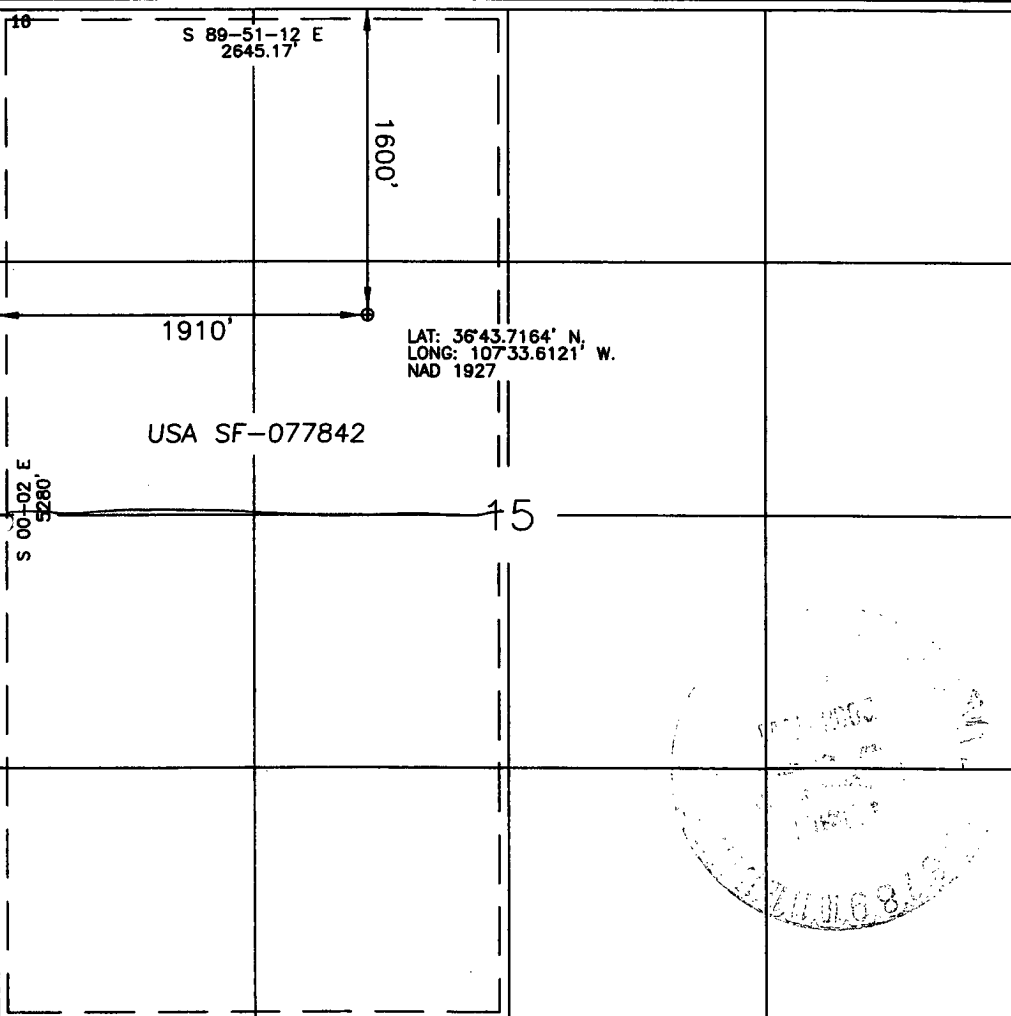
<sup>10</sup> Surface Location

UL or lot no.	Section	Township	Range	Lot Idn	Feet from the	North/South line	Feet from the	East/West line	County
F	15	29-N	7-W		1600'	NORTH	1910'	WEST	RIO ARRIBA

<sup>11</sup> Bottom Hole Location If Different From Surface

UL or lot no.	Section	Township	Range	Lot Idn	Feet from the	North/South line	Feet from the	East/West line	County
F									
<sup>12</sup> Dedicated Acres FC - W/320 PC - 160			<sup>13</sup> Joint or Infill		<sup>14</sup> Consolidation Code 160 acres for density purposes for the Pictured Cliffs 320 acres for revenue purposes for the Pictured Cliffs		<sup>15</sup> Order No.		

NO ALLOWABLE WILL BE ASSIGNED TO THIS COMPLETION UNTIL ALL INTERESTS HAVE BEEN CONSOLIDATED  
OR A NON-STANDARD UNIT HAS BEEN APPROVED BY THE DIVISION



<sup>17</sup> OPERATOR CERTIFICATION

I hereby certify that the information contained herein is true and complete to the best of my knowledge and belief

Patsy Clugston  
Signature  
Patsy Clugston  
Printed Name  
Sr. Regulatory Specialist  
Title  
12-10-04  
Date

<sup>18</sup> SURVEYOR CERTIFICATION

I hereby certify that the well location shown on this plat was plotted from field notes of actual surveys made by me or under my supervision, and that the same is true and correct to the best of my belief.

11-29-04  
Date of Survey  
Glen W. Russell  
Signature and Seal of Professional Surveyor  
15703  
Certificate Number

District I

1625 N. French Dr., Hobbs, NM 88240

District II

1301 W. Grand Ave., Artesia, NM 88210

District III

1000 Rio Brazos Rd., Aztec, NM 87410

District IV

1220 S. St. Francis Dr., Santa Fe, NM 87505

Energy, Minerals and Natural Resources

OIL CONSERVATION DIVISION

1220 South St. Francis Dr.

Santa Fe, NM 87505

May 27, 2004

<p><b>SUNDY NOTICES AND REPORTS ON WELLS</b> (DO NOT USE THIS FORM FOR PROPOSALS TO DRILL OR TO DEEPEN OR PLUG BACK TO A DIFFERENT RESERVOIR. USE "APPLICATION FOR PERMIT" (FORM C-101) FOR SUCH PROPOSALS.)</p>		<p>WELL API NO. <b>30-039-</b></p>
<p>1. Type of Well: Oil Well <input type="checkbox"/> Gas Well <input checked="" type="checkbox"/> Other</p>		<p>5. Indicate Type of Lease STATE <input type="checkbox"/> FEE <input type="checkbox"/></p>
<p>2. Name of Operator <b>BURLINGTON RESOURCES OIL &amp; GAS COMPANY LP</b></p>		<p>6. State Oil &amp; Gas Lease No. Federal Lease NMSF-077842</p>
<p>3. Address of Operator <b>3401 E. 30TH STREET, FARMINGTON, NM 87402</b></p>		<p>7. Lease Name or Unit Agreement Name <b>San Juan 29-7 Unit</b></p>
<p>4. Well Location Unit Letter <b>F</b> : <b>1600'</b> feet from the <b>North</b> line and <b>1910'</b> feet from the <b>West</b> line Section <b>15</b> Township <b>29N</b> Range <b>7W</b> NMPM County <b>Rio Arriba</b></p>		<p>8. Well Number <b>194</b></p>
<p>11. Elevation (Show whether DR, RKB, RT, GR, etc.)</p>		<p>9. OGRID Number <b>14538</b></p>
<p>Pit or Below-grade Tank Application <input type="checkbox"/> or Closure <input type="checkbox"/></p>		<p>10. Pool name or Wildcat <b>Basin Fruitland Coal/Blanco Pictured Cliffs</b></p>
<p>Pit type <b>New Drill</b> Depth to Groundwater <b>&gt;100'</b> Distance from nearest fresh water well <b>&lt;1000'</b> Distance from nearest surface water <b>&lt;1000'</b></p>		
<p>Pit Liner Thickness: <b>12</b> mil Below-Grade Tank: Volume <b>bbls;</b> Construction Material</p>		

12. Check Appropriate Box to Indicate Nature of Notice, Report or Other Data

NOTICE OF INTENTION TO:

PERFORM REMEDIAL WORK ☐ PLUG AND ABANDON ☐  
TEMPORARILY ABANDON ☐ CHANGE PLANS ☐  
PULL OR ALTER CASING ☐ MULTIPLE COMPL ☐

OTHER: **New Drill** ☒

SUBSEQUENT REPORT OF:

REMEDIAL WORK ☐ ALTERING CASING ☐  
COMMENCE DRILLING OPNS. ☐ P AND A ☐  
CASING/CEMENT JOB ☐

OTHER: ☐

13. Describe proposed or completed operations. (Clearly state all pertinent details, and give pertinent dates, including estimated date of starting any proposed work). SEE RULE 1103. For Multiple Completions: Attach wellbore diagram of proposed completion or recompletion.

Burlington Resources proposes to construct a new drilling pit and an associated vent/flare pit. Based on Burlington's interpretation of the Ecosphere's risk ranking criteria, the new drilling pit will be a lined pit as detailed in Burlington's Revised Drilling / Workover Pit Construction / Operation Procedures dated November 11, 2004 on file at the NMOCD office. A portion of the vent/flare pit will be designed to manage fluids and that portion will be lined as per the risk ranking criteria. Burlington Resources anticipates closing these pits according to the Drilling / Workover Pit Closure Procedure dated August 2, 2004 on file at the NMOCD office.

I hereby certify that the information above is true and complete to the best of my knowledge and belief. I further certify that any pit or below-grade tank has been/will be constructed or closed according to NMOCD guidelines ☐, a general permit ☒ or an (attached) alternative OCD-approved plan ☐.

SIGNATURE Nancy Oltmanns TITLE Senior Staff Regulatory Specialist DATE 1/18/2004

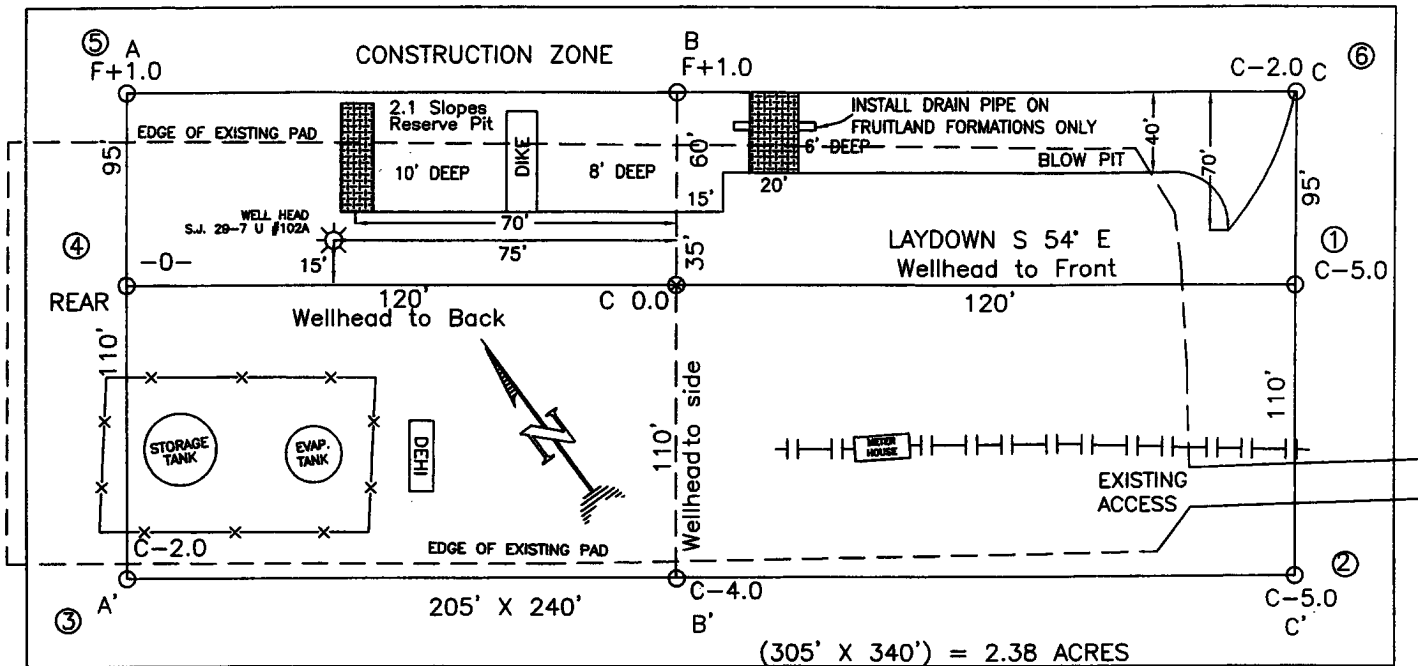
Type or print name Nancy Oltmanns E-mail address: noltmanns@br-inc.com Telephone No. 505-326-9891

For State Use Only

APPROVED BY [Signature] TITLE DEPUTY OIL & GAS INSPECTOR, DIST. 28 DATE MAR 24 2005

Conditions of Approval (if any)

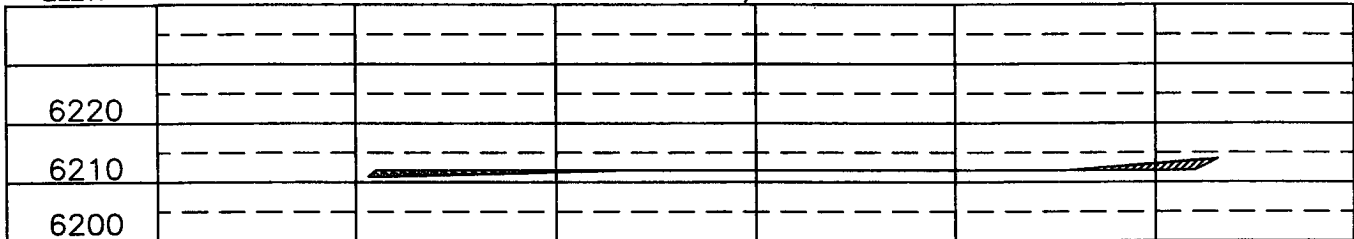
**BURLINGTON RESOURCES OIL & GAS COMPANY LP**  
**SAN JUAN 29-7 UNIT #194, 1600' FNL 1910' FWL**  
**SECTION 15, T-29-N, R-7-W, N.M.P.M., RIO ARriba COUNTY, NEW MEXICO**  
**GROUND ELEVATION: 6212', DATE: NOVEMBER 19, 2004**



RESERVE PIT DIKE: TO BE 8' ABOVE DEEP SIDE (OVERFLOW - 3' WIDE AND 1' ABOVE SHALLOW SIDE).  
 BLOW PIT: OVERFLOW PIPE HALFWAY BETWEEN TOP AND BOTTOM AND TO EXTEND OVER PLASTIC LINER AND INTO BLOW PIT.

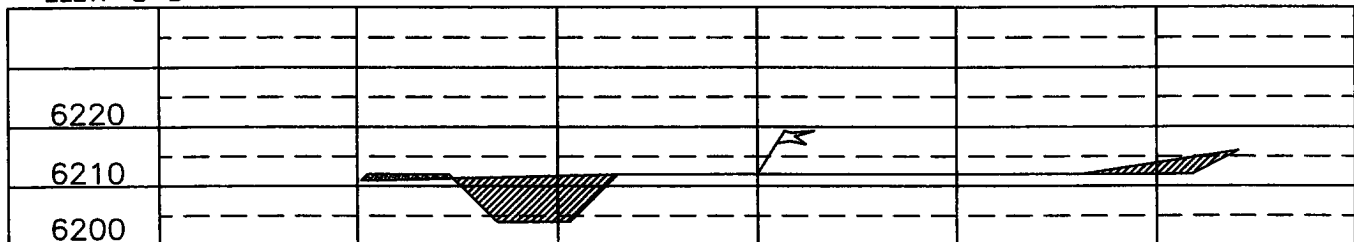
ELEV. A-A'

C/L

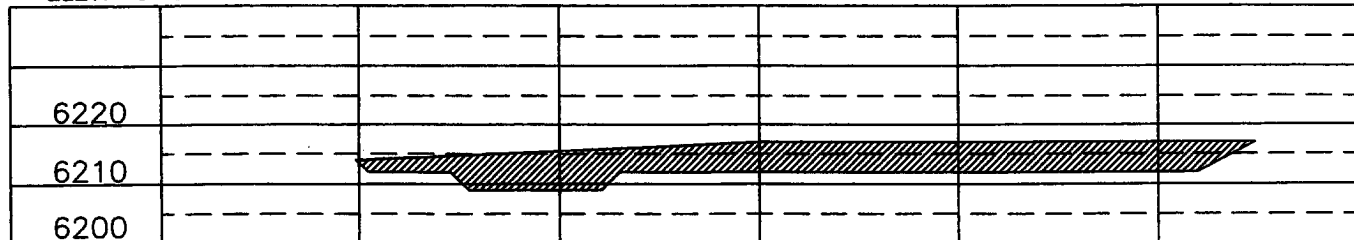


ELEV. B-B'

C/L



ELEV. C-C'



NOTE: VECTOR SURVEYS IS NOT LIABLE FOR UNDERGROUND UTILITIES OR PIPELINES.  
 CONTRACTOR SHOULD CALL ONE-CALL FOR LOCATION OF ANY MARKED OR UNMARKED BURIED PIPELINES OR CABLES  
 ON WELL PAD AND OR ACCESS ROAD AT LEAST TWO (2) WORKING DAYS PRIOR TO CONSTRUCTION.

### OPERATIONS PLAN

**Well Name:** San Juan 29-7 Unit #194  
**Location:** 1600'FNL, 1910'FWL, Section 15, T-29-N, R-7-W  
Rio Arriba County, New Mexico  
Latitude 36° 43.7164'N, Longitude 107° 33.6121'W  
**Formation:** Basin Fruitland Coal/Blanco Pictured Cliffs  
**Elevation:** 6212' GL

<b>Formation:</b>	<b>Top</b>	<b>Bottom</b>	<b>Contents</b>
Surface	San Jose	2103'	
Ojo Alamo	2103'	2226'	aquifer
Kirtland	2226'	2818'	gas
Fruitland Coal	2818'	3029'	gas
Base of Fruitland Coal	3029'	3034'	gas
Pictured Cliffs	3034'		gas
Total Depth	3234'		

**Logging Program:**

Open hole - None  
cased hole - CBL-CCL-GR TD to surface

**Coring Program:** None

**Mud Program:**

<u>Interval</u>	<u>Type</u>	<u>Weight</u>	<u>Vis.</u>	<u>Fluid Loss</u>
0- 120'	Spud <i>air bit must</i>	8.4-9.0	40-50	no control
120-3234'	FW/LSND	8.4-9.0	32-45	no control

**Casing Program (as listed, equivalent, or better):**

<u>Hole Size</u>	<u>Depth Interval</u>	<u>Csg.Size</u>	<u>Wt.</u>	<u>Grade</u>
8 3/4"	0 - 120'	7"	20.0#	J-55
6 1/4"	0 - 3234'	4 1/2"	10.5#	J-55

**Tubing Program:**

0' -3234'	2 3/8"	4.7#	J-55
-----------	--------	------	------

**Float Equipment:** 7" surface casing - guide shoe. Centralizers will be run in accordance with Onshore Order #2.

4 1/2" production casing - float shoe and float collar on bottom.  
Standard centralizers run every third joint above shoe to the base of the Ojo Alamo @ 2226'. Two turbolizing type centralizers - one below and one into the base of the Ojo Alamo @ 2226'. Standard centralizers thereafter every fourth joint up to the base of the surface pipe.

**Wellhead Equipment:** 7" x 4 1/2" x 2 3/8" 2000 psi screw on independent wellhead.

**Cementing:**

7" surface casing pre-set drilled- cement with 11 sxs Type I, II cement with 20% flyash mixed at 14.5 ppg, 1.61 cu ft per sack yield. (18 cu.ft of slurry to bring cement to surface). Wait on cement for 24 hours for pre-set holes before pressure testing or drilling out from under surface.

7" surface casing conventionally drilled - cement with 43 sxs Type III cement with 0.25 pps Celloflake, 3% calcium chloride. (54 cu ft-200% excess, bring cement to surface). Wait on cement appropriate time until cement achieves 250 psi compressive strength at 60 degrees F. prior to nipple up of BOPE. Wait on cement for 8 hrs for conventionally set holes before pressure testing or drilling out from under surface.

4 1/2" production casing - Lead w/175 sx Premium Lite cement w/3% calcium chloride, 0.25 pps celloflake, 5 pps LCM-1, 0.4% fluid loss, 0.4% sodium metasilicate. Tail w/90 sx Type III cement w/1% calcium chloride, 0.25 pps celloflake, and 0.2% fluid loss (497 cu.ft. of slurry, 50% excess to circulate to surface).

Note: If open hole logs are run, cement volumes will be based on 25% excess over caliper volumes.

**BOP and tests:**

Surface to TD - 11" 2000 psi (minimum double gate BOP stack (Reference Figure #1). Prior to drilling out surface casing, test BOPE and casing to 600 psi/30 min.

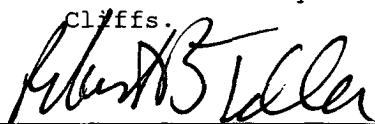
Completion - 6" 2000 psi (minimum) double gate BOP stack (Reference Figure #2). Prior to completion operations, test BOPE and casing to 2000 psi/15 min.

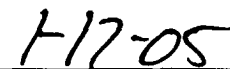
From surface to TD - choke manifold (Reference Figure #3).

Pipe rams will be actuated at least once each day and blind rams actuated once each trip to test proper functioning. An upper kelly cock valve with handle and drill string safety valves to fit each drill string will be maintained and available on the rig floor.

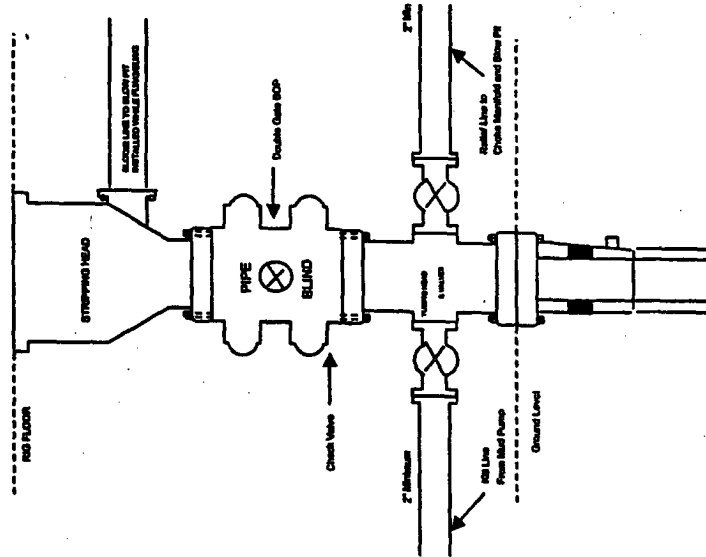
**Additional information:**

- \* The Basin Fruitland Coal and Pictured Cliffs formation will be completed and commingled.
- \* Anticipated pore pressure for the Pictured Cliffs is 500 psi.
- \* This gas is dedicated.
- \* West half of Section 15 is dedicated to the Fruitland Coal and the northwest quarter of Section 15 is dedicated to the Pictured Cliffs.

  
Drilling Engineer

  
Date

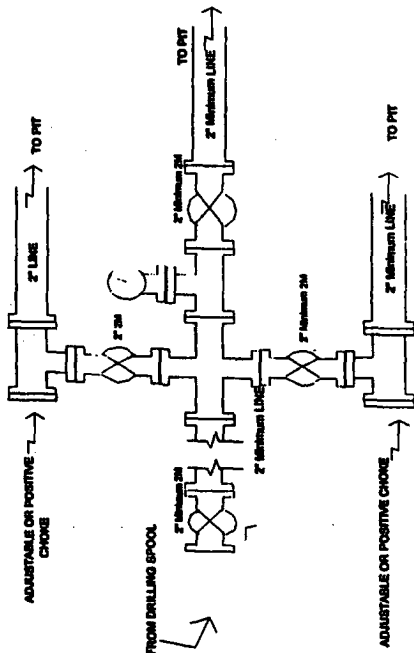
Completion/Workover Rig  
BOP Configuration  
2,000 psi System



Minimum BOP Installation for all Completion/Workover Operations. 7-1/16" bore, 2000 psi minimum working pressure double gate BOP to be equipped with blind and pipe rams. A stripping head to be installed on the top of the BOP. All BOP equipment is 2000 psi working pressure or greater excluding 500 psi stripping head.

Figure #2

Drilling Rig  
Choke Manifold Configuration  
2000 psi System

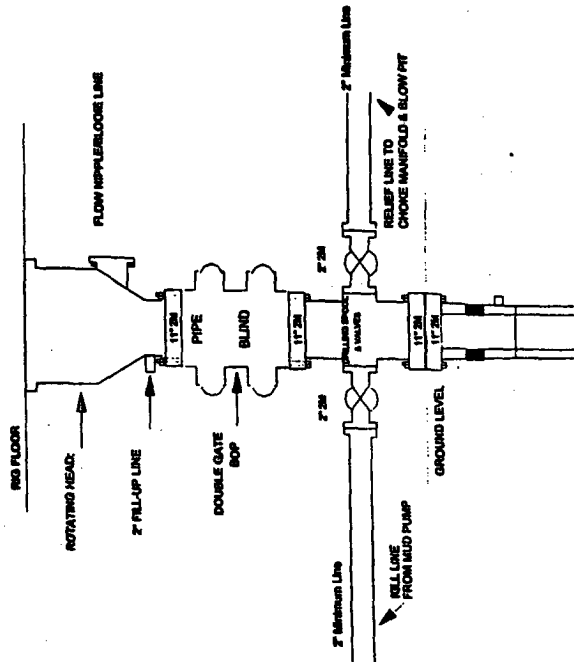


Choke manifold installation from Surface Casing Point to Total Depth. 2,000psi working pressure equipment with two chokes.

Figure #3

4-20-01

Drilling Rig  
2000 psi System



BOP Installation from Surface Casing Point to Total Depth. 11" Bore 10" Nominal, 2000 psi working pressure double gate BOP to be equipped with blind rams and pipe rams. A 500 psi casing head on top of ram preventers. All BOP equipment is 2,000 psi working pressure

4-20-01

Figure #1