

UNITED STATES
DEPARTMENT OF THE INTERIOR
BUREAU OF LAND MANAGEMENT

RECEIVED

FEB 29 2012

Sundry Notices and Reports on Wells

Farmington Field Office
Bureau of Land Management Case Number
SF-079294

1. Type of Well
GAS

6. If Indian, All. or
Tribe Name

2. Name of Operator

ConocoPhillips

7. Unit Agreement Name
San Juan 28-7 Unit

3. Address & Phone No. of Operator

PO Box 4289, Farmington, NM 87499 (505) 326-9700

8. Well Name & Number
San Juan 28-7 Unit 11

9. API Well No.

30-039-07263

4. Location of Well, Footage, Sec., T, R, M

Unit B (NWNE), 1100' FNL & 1190' FEL, Section 36, T28N, R7W, NMPM

10. Field and Pool
Basin FC / Blanco PC

11. County and State
Rio Arriba, NM

12. CHECK APPROPRIATE BOX TO INDICATE NATURE OF NOTICE, REPORT, OTHER DATA

Type of Submission

Type of Action

☒ Notice of Intent

☒ Abandonment

☐ Change of Plans

☐ Other -

☐ Subsequent Report

☐ Recompletion

☐ New Construction

☐ Plugging

☐ Non-Routine Fracturing

☐ Final Abandonment

☐ Casing Repair

☐ Water Shut off

☐ Altering Casing

☐ Conversion to Injection

13. Describe Proposed or Completed Operations

ConocoPhillips requests permission to P&A the subject well per the attached procedure, current and proposed wellbore schematics.

* File a copy of the referenced 2001 CBL to agencies for review prior to cementing

RCVD MAR 7 '12

OIL CONS. DIV.

DIST. 3

14. I hereby certify that the foregoing is true and correct.

Notify NMOCD 24 hrs
prior to beginning
operations

Signed Dollie L. Busse Dollie L. Busse Title Staff Regulatory Technician Date 2/29/12

(This space for Federal or State Office use)

APPROVED BY Original Signed: Stephen Mason Title _____ Date MAR 05 2012

CONDITION OF APPROVAL, if any:

Title 18 U.S.C. Section 1001, makes it a crime for any person knowingly and willfully to make any department or agency of the United States any false, fictitious or fraudulent statements or representations as to any matter within its jurisdiction.

NMOCD

A

OK

PLUG AND ABANDONMENT PROCEDURE

February 13, 2012

SJ 28-7 #11

Basin Fruitland Coal

1100' FNL, 1190' FEL, Section 36, T28N, R7W, Rio Arriba County, New Mexico

API 30-039-07263 / Long 107°31'9.552 W / Lat: 36°37'19.391 N

Note: All cement volumes use 100% excess outside pipe and 50' excess inside. The stabilizing wellbore fluid will be 8.3 ppg, sufficient to balance all exposed formation pressures. All cement will be Class B, mixed at 15.6 ppg with a 1.18 cf/sx yield.

1. This project requires a NMOCD C-144 CLEZ Closed-Loop System Permit for the use of an A-Plus steel tank to handle waste fluids circulated from the well and cement wash up.
2. Install and test location rig anchors. Comply with all NMOCD, BLM, and Operator safety regulations. MOL and RU daylight pulling unit. Conduct safety meeting for all personnel on location. Record casing, tubing and bradenhead pressures. NU relief line and blow down well. Kill well with water as necessary and at least pump tubing capacity of water down the tubing. ND wellhead and NU BOP. Function test BOP.
3. Rods: Yes ☐, No ☒, Unknown ☐.
Tubing: Yes ☒, No ☐, Unknown ☐, Size 2-3/8", Length 3398'.
Packer: Yes ☐, No ☒, Unknown ☐, Type .
If this well has rods or a packer, then modify the work sequence in step #2 as appropriate. Round trip 7" gauge ring or casing scraper to 3745' (existing CIBP) or as deep as possible.

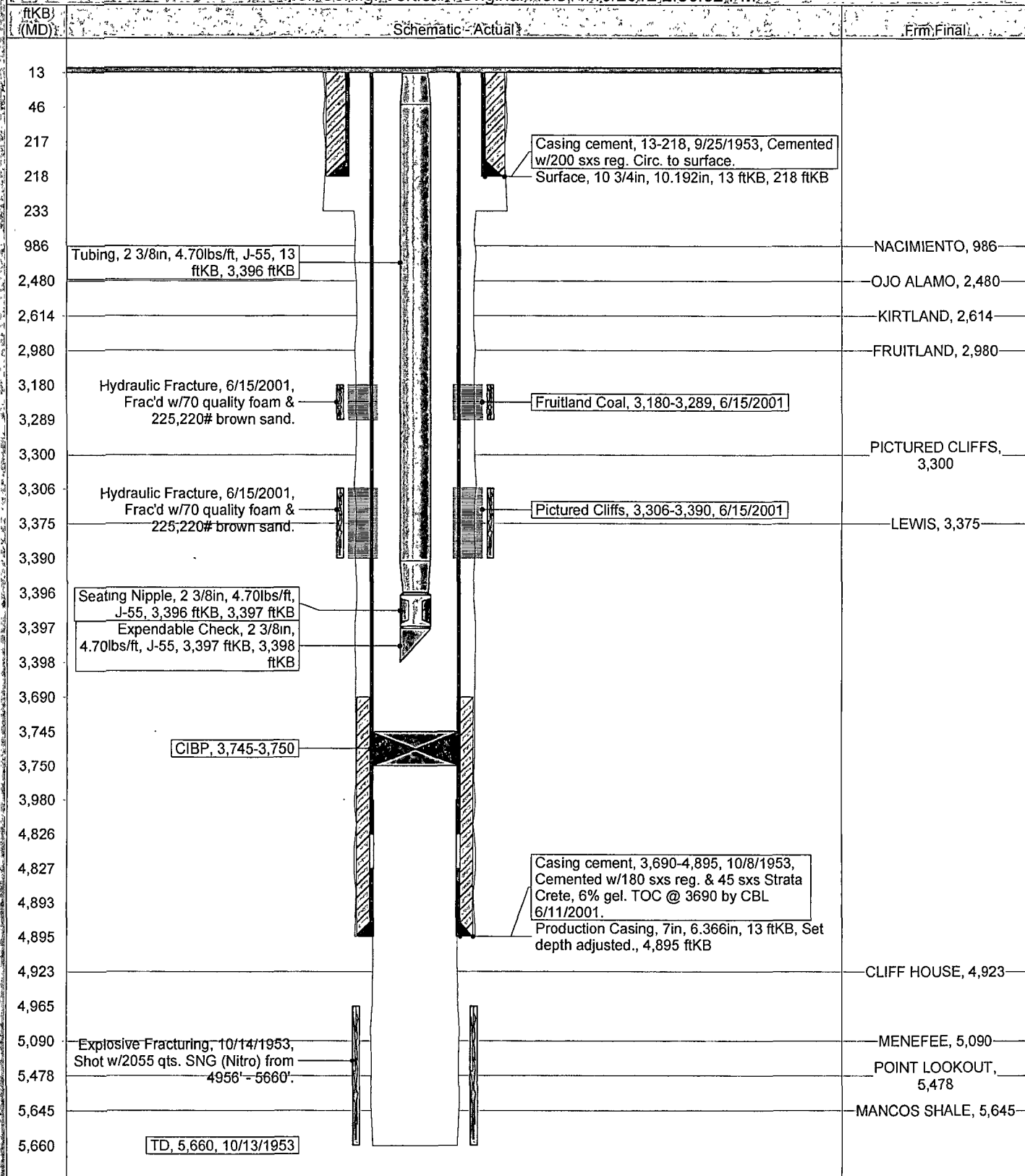
NOTE: BLM requires a CBL log to be run on all wells where the cement did not circulate to surface or where a T.S. or CBL log was not previously run. This procedure is prepared with the understanding that it may be modified based on the TOC from the CBL.

4. **Plug #1 (Mesaverde interval, 3745' – 3645'):** TIH and tag existing CIBP at 3745'. **Note: this CIBP was set in 2001 to plug and abandon the Mesaverde interval.** Mix 29 sxs Class B cement and spot a balanced plug inside the casing above the CIBP to isolate the Mesaverde interval.
5. **Plug #2 (Pictured Cliffs and Fruitland Coal interval, 3390' – 2854'):** Note: well is a strong water producer. TIH and set 7" cement retainer at 3130'; prior to setting the CR, pump 15 bbls of water down the tubing to clear coal fines. Pressure test tubing to 1000 PSI. Load casing with water and circulate well clean. Pressure test casing. Sting into retainer and establish rate into perforations. **Note: there is no cement outside the casing where perforated.** Mix 214 sxs Class B cement, squeeze 104 sxs outside 7" casing (long plug, 30% excess) and leave 110 sxs inside casing above and below CR. TOH.
6. **Plug #3 (Kirtland and Ojo Alamo tops, 2668' – 2430'):** Perforate 3 squeeze holes at 2668'. Establish injection rate into squeeze holes if casing tested. Set 7" cement retainer at 2618'. Sting into CR and establish injection rate into squeeze holes. Mix and pump 125 sxs Class B cement, squeeze 71 sxs outside casing and leave 54 sxs inside casing to cover the Kirtland and Ojo Alamo tops. TOH and LD tubing.

- 1232 1132 1232
7. **Plug #4 (Nacimiento top, 1036' – 936')**: Perforate 3 squeeze holes at 1036'. Establish injection rate into squeeze holes if casing tested. Set 7" cement retainer at 936'. Sting into CR and establish injection rate into squeeze holes. Mix 59 sxs Class B cement, squeeze 30 sxs outside casing and leave 29 sxs inside casing to cover the Nacimiento top. TOH and LD tubing.
 8. **Plug #5 (10.75" surface casing shoe, 268' - Surface)**: Perforate 3 squeeze holes at 268'. Establish circulation out bradenhead with water and circulate the BH annulus clean. Mix approximately 125 sxs Class B cement and pump down the 7" casing to circulate good cement out bradenhead. Shut in well and WOC.
 9. ND BOP and cut off wellhead below surface casing flange. Install P&A marker with cement to comply with regulations. RD, MOL and cut off anchors. Restore location per BLM stipulations.

API / UWI 3003907263	Surface Legal Location NMPM-28N-07W-36-A	Field Name FC/PC COM	License No	State/Province NEW MEXICO	Well Configuration Type Vertical
Ground Elevation (ft) 6,610.00	Original KB/RT Elevation (ft) 6,623.00	KB-Ground Distance (ft) 13.00	KB-Casing Flange Distance (ft) 13.00	KB-Tubing Hanger Distance (ft) 13.00	

Well Config: Vertical - Original Hole: 1/19/2012 2:38:02 PM



SJ 28-7 #11

Proposed P&A

Basin Fruitland Coal

1100' FNL & 1190' FEL, Section 36, T-28-N, R-7-W, Rio Arriba County, NM

Lat: N _____ / Long: W _____ / API #30-039-07263

Today's Date: 2/13/12

Spud: 9/23/53

MV Completed: 10/21/53

PC Completed: 6/22/01

Elevation: 6610' GI

13-3/4" hole

Nacimiento @ 986'

Ojo Alamo @ 2480'

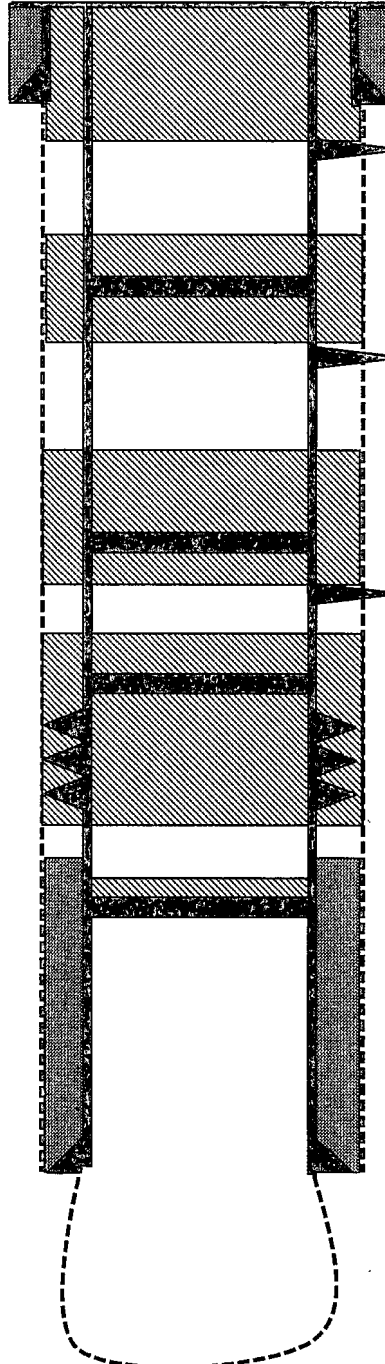
Kirtland @ 2618'

Fruitland @ 2904'

Pictured Cliffs @ 3300'

Mesaverde @ 4923'

9" hole



Plug #5: 268' - 0'
Class B cement, 125 sxs

10.75" 33#, H-40 Casing set @ 218'
Cmt with 200 sxs (Circulated to Surface)

Perforate @ 268'

Cement retainer @ 986'

Plug #4: 1036' - 936'
Class B cement, 59 sxs:
29 inside and 30 outside

Perforate @ 1036'

Cement retainer @ 2618'

Plug #3: 2668' - 2430'
Class B cement, 125 sxs:
71 outside and 54 inside

Perforate @ 2668'

Cement retainer @ 3130'

Fruitland Coal Perforations:
3180' - 3390'

Plug #2: 3390' - 2854'
Class B cement, 214 sxs:
110 inside and 104
outside (long outside plug
30% excess)

TOC at 3690' (CBL, 2001)

Set CIBP @ 3745' (2001)

Plug #1: 3745' - 3645'
Class B cement, 29 sxs

7", 23#, J-55 Casing set @ 4885'
Cement with 225 sxs

Mesaverde Open Hole Interval:
4965' - 5660'

TD 5560'
PBTD 3745'

**UNITED STATES DEPARTMENT OF THE INTERIOR
BUREAU OF LAND MANAGEMENT
FARMINGTON DISTRICT OFFICE
1235 LA PLATA HIGHWAY
FARMINGTON, NEW MEXICO 87401**

Attachment to notice of
Intention to Abandon:

Re: Permanent Abandonment
Well: 11 San Juan 28-7 Unit

CONDITIONS OF APPROVAL

1. Plugging operations authorized are subject to the attached "General Requirements for Permanent Abandonment of Wells on Federal and Indian Lease."
2. Farmington Office is to be notified at least 24 hours before the plugging operations commence (505) 599-8907.
3. The following modifications to your plugging program are to be made:
 - a) Place the Nacimiento plug from 1232' – 1132' inside and outside the 7" casing.

You are also required to place cement excesses per 4.2 and 4.4 of the attached General Requirements.

Office Hours: 7:45 a.m. to 4:30 p.m.