

RECEIVED

UNITED STATES
DEPARTMENT OF THE INTERIOR
BUREAU OF LAND MANAGEMENT

MAR 12 2012

Sundry Notices and Reports on Wells

Farmington Field Office
Bureau of Land Management

1. Type of Well
GAS

2. Name of Operator

BURLINGTON

RESOURCES OIL & GAS COMPANY LP

3. Address & Phone No. of Operator

PO Box 4289, Farmington, NM 87499 (505) 326-9700

4. Location of Well, Footage, Sec., T, R, M

Unit D (NWNW), 1140' FNL & 800' FWL, Section 18, T27N, R5W, NMPM

5. Lease Number
SF-079391

6. If Indian, All. or
Tribe Name

7. Unit Agreement Name
San Juan 27-5 Unit

8. Well Name & Number
San Juan 27-5 Unit 186

9. API Well No.
30-039-20821

10. Field and Pool
S. Blanco Pictured Cliffs

11. County and State
Rio Arriba, NM

12. CHECK APPROPRIATE BOX TO INDICATE NATURE OF NOTICE, REPORT, OTHER DATA

Type of Submission

☒ Notice of Intent☐ Subsequent Report☐ Final Abandonment

Type of Action

☒ Abandonment☐ Recompletion☐ Plugging☐ Casing Repair☐ Altering Casing☐ Change of Plans☐ New Construction☐ Non-Routine Fracturing☐ Water Shut off☐ Conversion to Injection☐ Other -

13. Describe Proposed or Completed Operations

Burlington Resources requests permission to P&A the subject well per the attached procedure, current and proposed wellbore schematics.

RCVD MAR 19 '12
OIL CONS. DIV.

Notify NMOCD 24 hrs
prior to beginning
operations

DIST. 3

14. I hereby certify that the foregoing is true and correct.

Signed

Dollie L. Busse

Title Staff Regulatory Technician

Date 3/12/12

(This space for Federal or State Office use)

APPROVED BY Original Signed: Stephen Mason Title

Date MAR 13 2012

CONDITION OF APPROVAL, if any:

Title 18 U.S.C. Section 1001, makes it a crime for any person knowingly and willfully to make any department or agency of the United States any false, fictitious or fraudulent statements or representations as to any matter within its jurisdiction.

NMOCD

AV

ConocoPhillips
SAN JUAN 27-5 UNIT 186
Expense - P&A

Lat 36° 34' 42.42" N

Long 107° 24' 22.464" W

PROCEDURE

This project requires a NMOCD C-144 CLEZ Closed-Loop System Permit for the use of an A-Plus steel tank to handle waste fluids circulated from the well and cement wash up.

1. Hold pre-job safety meeting. Comply with all NMOCD, BLM, and COPC safety and environmental regulations. Test rig anchors prior to moving in rig.
2. MIRU coil tubing unit. Check casing, tubing, and bradenhead pressures and record them in Wellview.
3. When an existing primary valve (i.e. casing valve) is to be used, the existing piping should be removed and replaced with the appropriate piping for the intended operation.
4. RU blow lines from casing valves and begin blowing down casing pressure. Kill well with water, as necessary, and at least pump tubing capacity of water down tubing.
5. Rig up coil tubing unit.
6. Pull coiled tubing with coiled tubing unit. (per pertinent data sheet). Rig down and move off coiled tubing unit.

Rods:	No	Size:		Length:	
Tubing:	Yes	Size:	1-3/4"	Length:	3208'
Packer:	No	Size:		Depth:	

7. MIRU P&A rig. ND wellhead and NU BOP. Function test BOP. PU workstring and round trip 2-7/8" casing scraper through deepest perforation or as deep as possible.

All cement volumes use 100% excess outside pipe and 50' excess inside pipe. The stabilizing wellbore fluid will be 8.3 ppg, sufficient to balance all exposed formation pressures. All cement will be ASTM Type II mixed at 15.6 ppg with a 1.18 cf/sk yield.

8. Plug 1 (Pictured Cliffs perforations, Fruitland Coal top, Kirtland top, and Ojo Alamo, 2420-3156', 23 Sacks Class B Cement)

TIH with tubing and set 2-7/8" cement retainer at 3156'. Load casing and circulate well clean. Pressure test tubing to 1000 PSI. Pressure test casing to 800#. If casing does not test, then spot or tag subsequent plugs as appropriate. Mix 23 sxs Class B cement and spot above cement retainer to isolate the PC perforations, Fruitland Coal top, Kirtland top and Ojo Alamo top. POOH

9. Plug 2 (Nacimiento top, ~~1421-1221'~~^{1300 1200}, 39 Sacks Class B Cement)

Perforate 2 squeeze holes at ~~1221'~~^{1200'}. Set 2-7/8" cement retainer at ~~1271'~~^{1200'}. TIH with tubing and sting into cement retainer. Establish rate into squeeze holes. Mix 39 sxs Class B cement. Squeeze 35 sxs cement outside the casing and leave 4 sxs in the casing to cover the Nacimiento Top. POOH

10. Plug 3 (Surface Shoe, 0-171', 71 Sacks Class B Cement)

Perforate 2 squeeze holes at 171'. Establish circulation out bradenhead with water and circulate bradenhead annulus clean. Mix 71 sxs class B cement and pump down production casing to circulate good cement out bradenhead. Shut in well and WOC.

11. Nipple down BOP and cut off casing below the casing flange. Install P&A marker with cement to comply with regulations. Rig down, move off location, cut off anchors, and restore location.

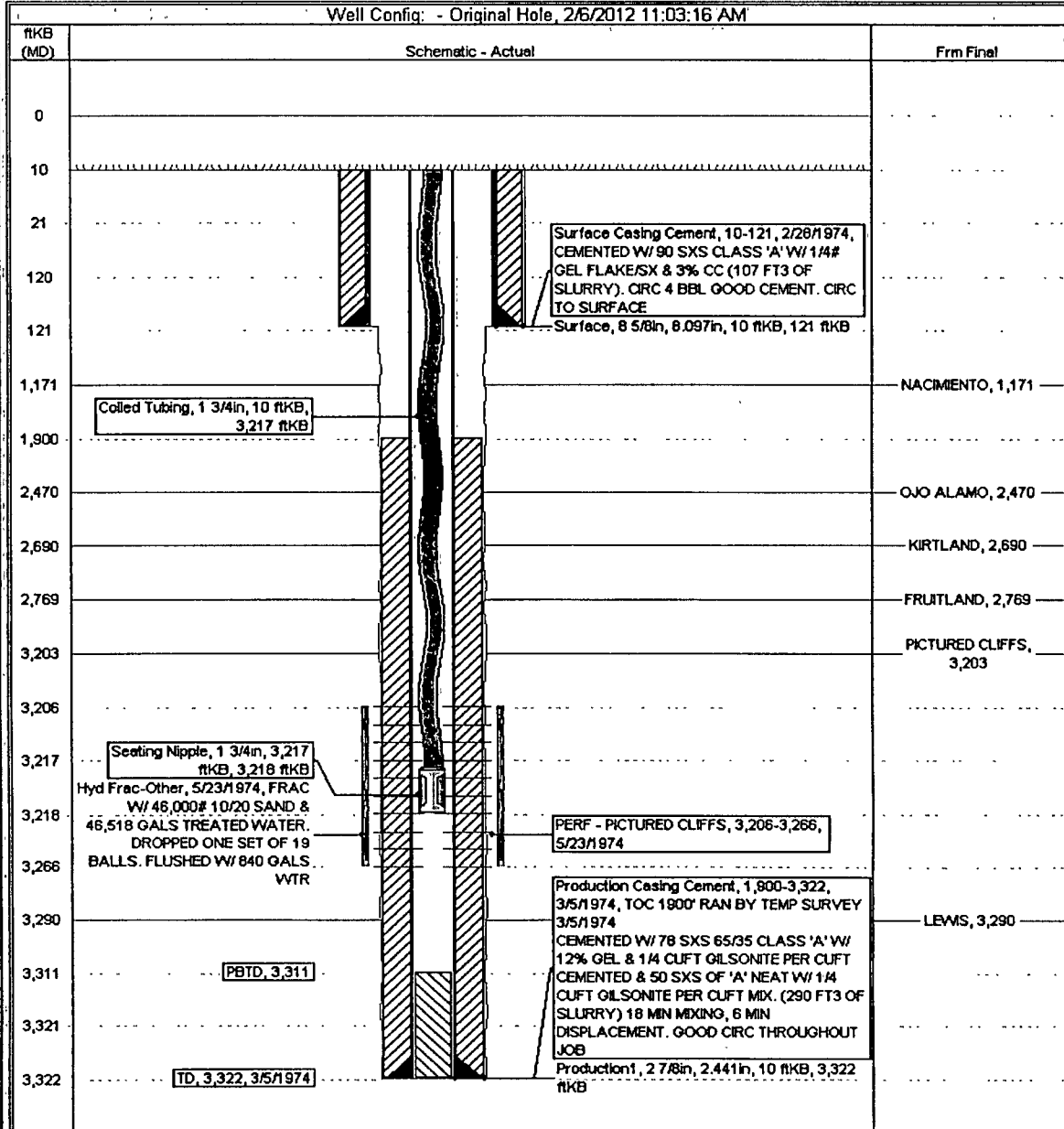
Current Schematic

ConocoPhillips

Well Name: SAN JUAN 27.5 UNIT #186

API Unit	Surface Legal Location	Field Name	License No.	State/Province	Unit Configuration Type	Edit
3003920821	NMPM,018-027N-005W	BLANCO P.C. SOUTH GAS		NEW MEXICO		
Ground Elevation (m)	Original K&RT Elevation (m)	K&RT Ground Distance (m)	K&RT Casing Length Distance (m)	K&RT Tubing Hanger Distance (m)		
6,417.00	6,427.00	10.00	6,427.00	6,427.00		

Well Config: - Original Hole, 2/6/2012 11:03:16 AM



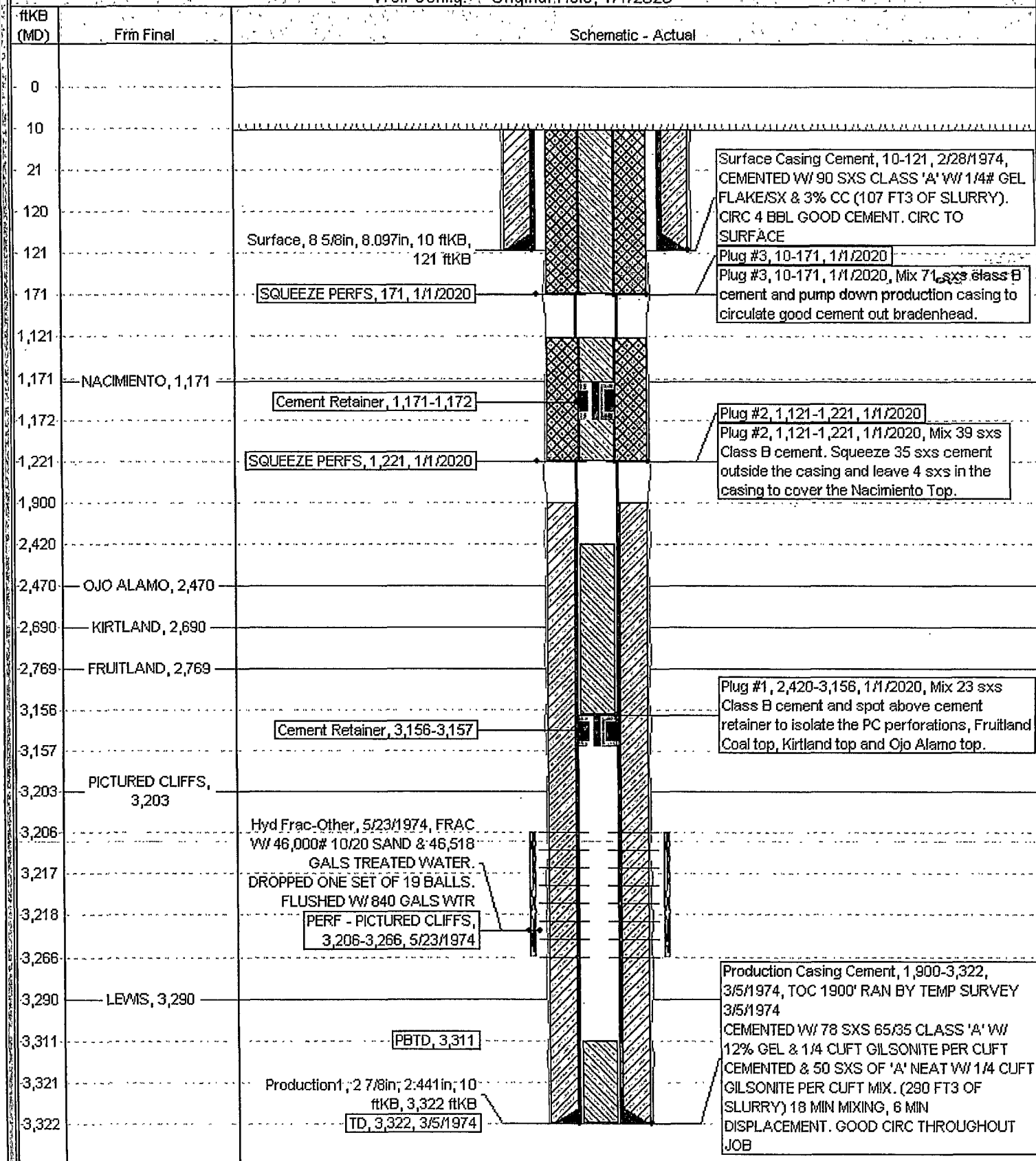
Proposed Schematic

ConocoPhillips

Well Name: SAN JUAN 27.5 UNIT #186

API UWI 3003920821	Surface Legal Location NMPM,018-027N-005W	Field Name BLANCO P.C. SOUTH (GAS)	License No.	State/Province NEW MEXICO	Well Configuration Type Edit
Ground Elevation (ft) 6,417.00	Original KB/RT Elevation (ft) 6,427.00	116-Grnd Distance (ft) 10.00	116-Casing/Flange Distance (ft) 6,427.00	116-Tubing Hanger Distance (ft) 6,427.00	

Well Config: - Original Hole, 1/1/2020



**UNITED STATES DEPARTMENT OF THE INTERIOR
BUREAU OF LAND MANAGEMENT
FARMINGTON DISTRICT OFFICE
1235 LA PLATA HIGHWAY
FARMINGTON, NEW MEXICO 87401**

Attachment to notice of
Intention to Abandon:

Re: Permanent Abandonment
Well: 186 San Juan 27-5 Unit

CONDITIONS OF APPROVAL

1. Plugging operations authorized are subject to the attached "General Requirements for Permanent Abandonment of Wells on Federal and Indian Lease."
2. Farmington Office is to be notified at least 24 hours before the plugging operations commence (505) 599-8907.
3. The following modifications to your plugging program are to be made:
 - a) Place the Nacimiento plug from 1300' – 1200' inside and outside the 2 7/8" casing.

You are also required to place cement excesses per 4.2 and 4.4 of the attached General Requirements.

Office Hours: 7:45 a.m. to 4:30 p.m.