

UNITED STATES
DEPARTMENT OF THE INTERIOR
BUREAU OF LAND MANAGEMENT

RECEIVED

MAR 22 2012

Sundry Notices and Reports on Wells

RECEIVED
B.L.M. - MAILROOM

2012 MAR 28 PM 2:06

Farmington Field Office
Bureau of Land Management

1. Type of Well
GAS

5. Lease Number
NM-01614

6. If Indian, All. or
Tribe Name

7. Unit Agreement Name

2. Name of Operator

BURLINGTON

RESOURCES OIL & GAS COMPANY LP

8. Well Name & Number
Thompson 13

3. Address & Phone No. of Operator

PO Box 4289, Farmington, NM 87499 (505) 326-9700

9. API Well No.

30-045-20509

4. Location of Well, Footage, Sec., T, R, M

Unit F (SENW), 1800' FNL & 1800' FWL, Section 28, T31N, R12W, NMPM

10. Field and Pool
Basin FC / Flora Vista Sand

11. County and State
San Juan, NM

12. CHECK APPROPRIATE BOX TO INDICATE NATURE OF NOTICE, REPORT, OTHER DATA

Type of Submission

☒ Notice of Intent☐ Subsequent Report☐ Final Abandonment

Type of Action

☒ Abandonment☐ Recompletion☐ Plugging☐ Casing Repair☐ Altering Casing☐ Change of Plans☐ New Construction☐ Non-Routine Fracturing☐ Water Shut off☐ Conversion to Injection☐ Other -

13. Describe Proposed or Completed Operations

Burlington Resources requests permission to P&A the subject well per the attached procedure, current and proposed wellbore schematics.

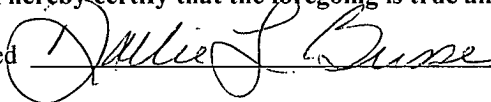
RCVD MAR 29 '12

OIL CONS. DIV.

DIST. 3

14. I hereby certify that the foregoing is true and correct.

Signed



Dollie L. Busse

Title Staff Regulatory Technician

Date 3/22/12

(This space for Federal or State Office use)

APPROVED BY Original Signed: Stephen Mason

Title

Date

MAR 26 2012

CONDITION OF APPROVAL, if any:

Title 18 U.S.C. Section 1001, makes it a crime for any person knowingly and willfully to make any department or agency of the United States any false, fictitious or fraudulent statements or representations as to any matter within its jurisdiction

NMOCD A

ConocoPhillips
THOMPSON 13
Expense - P&A

Lat 36° 52' 21.576" N

Long 108° 6' 21.456" W

PROCEDURE

Note: This project requires a NMOCD C-144 CLEZ Closed-Loop System Permit for the use of an A-Plus steel tank to handle waste fluids circulated from the well and cement wash up. All cement volumes use 100% excess outside pipe and 50' excess inside pipe. The stabilizing wellbore fluid will be 8.3 ppg, sufficient to balance all exposed formation pressures. All cement will be ASTM Type II mixed at 15.6 ppg with a 1.18 cf/sk yield.

1. Hold pre-job safety meeting. Comply with all NMOCD, BLM, and COPC safety and environmental regulations. Test rig anchors prior to moving in rig.
2. MIRU workover rig. Check casing, tubing, and bradenhead pressures and record them in Wellview.
3. When an existing primary valve (i.e. casing valve) is to be used, the existing piping should be removed and replaced with the appropriate piping for the intended operation.
4. RU blow lines from casing valves and begin blowing down casing pressure. Kill well with water, as necessary.
5. LD rods. ND wellhead and NU BOPE.

Tubing: Yes
Rods: Yes

Size: 2 3/8"
Size: 3/4"

Length: 2502'
Length: 2477'

6. Tag up and TOOH.

7. PU mill and bit sub for 4 1/2", 9.5#, J-55 casing and RIH to CO to PBTD (2525'). If scale is encountered, spot acid as necessary. TOOH. LD mill & bit sub.

8. RIH and set CR for 4 1/2", 9.5#, J-55 casing at 2,223'. Pressure test casing to 560 psi. If casing does not test, notify Regulatory team (320-5919) before proceeding. Spot and tag subsequent plugs as appropriate.

9. Plug #1 (Fruitland Coal and Pictured Cliffs perforations, 2,223' - ~~2,423'~~ ²⁰⁷²):

Pressure test tubing to 1000psi. Load casing with water and attempt to establish circulation. Mix ~~12~~ ¹² sx Class B cement and spot inside casing above CR to isolate the Fruitland Coal perforations. PUH.

10. Plug #2 (Fruitland Coal formation top, ~~1,923'~~ ^{1,923'} - ~~1,823'~~):

Mix ~~12~~ ¹² sx Class B cement and spot a balanced cement plug inside casing to isolate the Fruitland Coal formation top. POOH.

11. Plug #3 (Ojo Alamo and Kirtland formation tops, ~~1,055'~~ ^{823'} - ~~800'~~):

Perforate 3 HSC holes at ~~1,055'~~ ^{823'}. Establish rate into squeeze holes. RIH and set CR for 4 1/2" 9.5# J-55 at ~~1,005'~~ ^{823'}. Mix 66 sx Class B cement, squeeze 46 sx behind casing and leave 20 sx Class B cement inside casing to isolate the Ojo Alamo and Kirtland formation tops. POOH.

12. Plug #4 (Surface Casing Shoe and Surface plug, 162' - Surface):

Connect the pump line to the bradenhead valve and attempt to pressure test the BH annulus to 300 PSI; note the volume to load. If the BH annulus holds pressure, then establish circulation out casing valve with water. Mix 16 sx Class B cement and spot a balanced cement plug inside casing from 162' to surface, to isolate the Surface casing shoe and Surface plug, circulate good cement out casing valve. TOH and LD tubing. Shut in well and WOC. If the BH annulus does not test, then perforate at the appropriate depth and attempt to circulate cement to surface filling casing from 162' and the annulus from the squeeze holes to surface. Shut well in and WOC.

13. Nipple down BOP and cut off casing below the casing flange. Install P&A marker with cement to comply with regulations. Rig down, move off location, cut off anchors, and restore location.

RECEIVED
B.L. - MAIL ROOM
2012 MAR 28 PM 2:06
STATE OFFICE
SANTA FE, NEW MEXICO

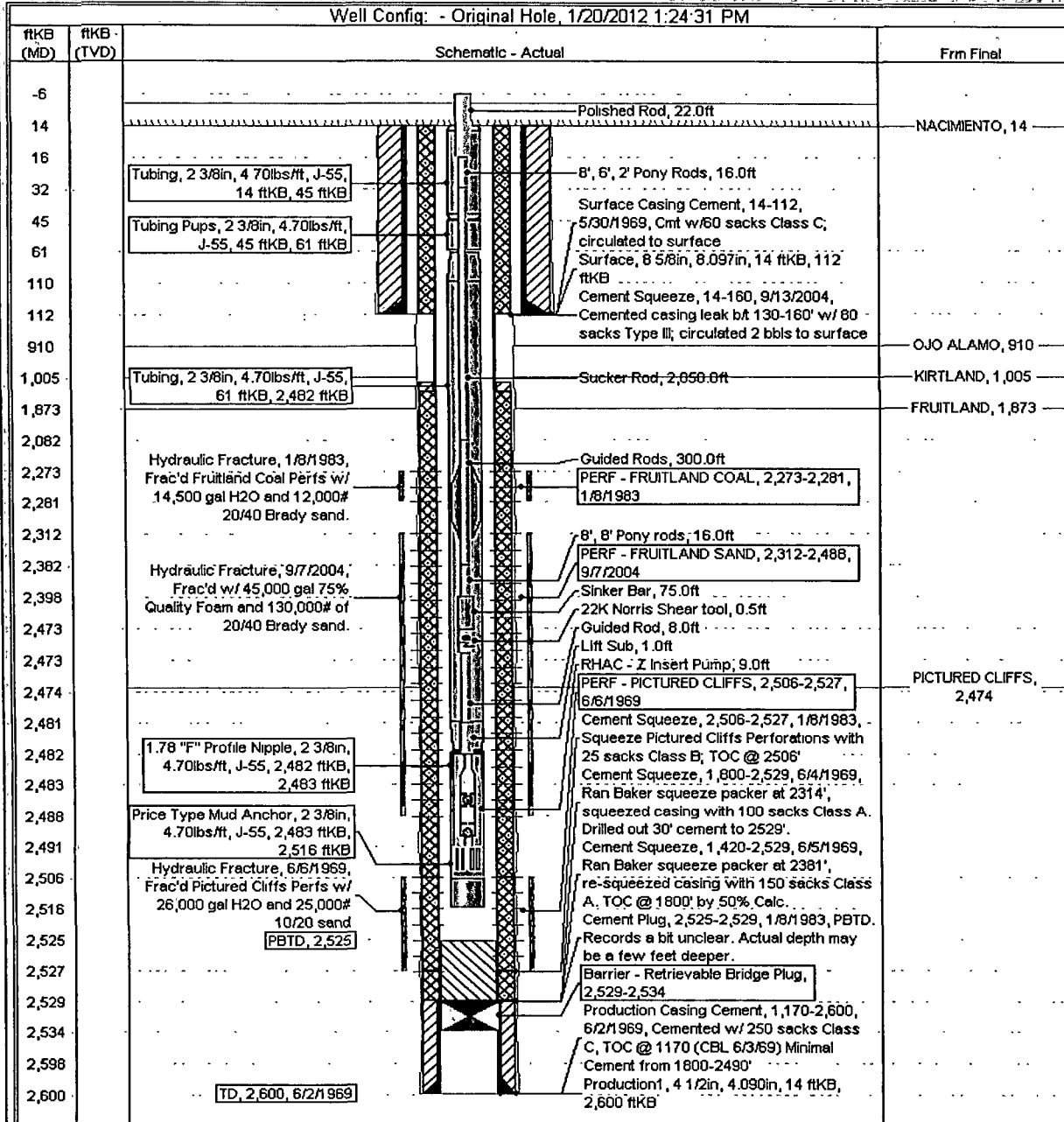
Current Schematic

ConocoPhillips

Well Name: THOMPSON #13

API/UVI#	3004520509	State Legal Location	NMPM,028-031N-012W	Field Name	FLORA VISTA FRUITLAND COAL	License No		State/Province	NEW MEXICO	Well Configuration Type	Edit
Grilled Elevation (ft)	6,120.00	Original KB/RT Elevation (ft)	6,134.00	KB-Grilled Distance (ft)	14.00	KB-Casing Flange Distance (ft)	6,134.00	KB-Tubing Hanger Distance (ft)	6,134.00		

Well Config: - Original Hole, 1/20/2012 1:24:31 PM



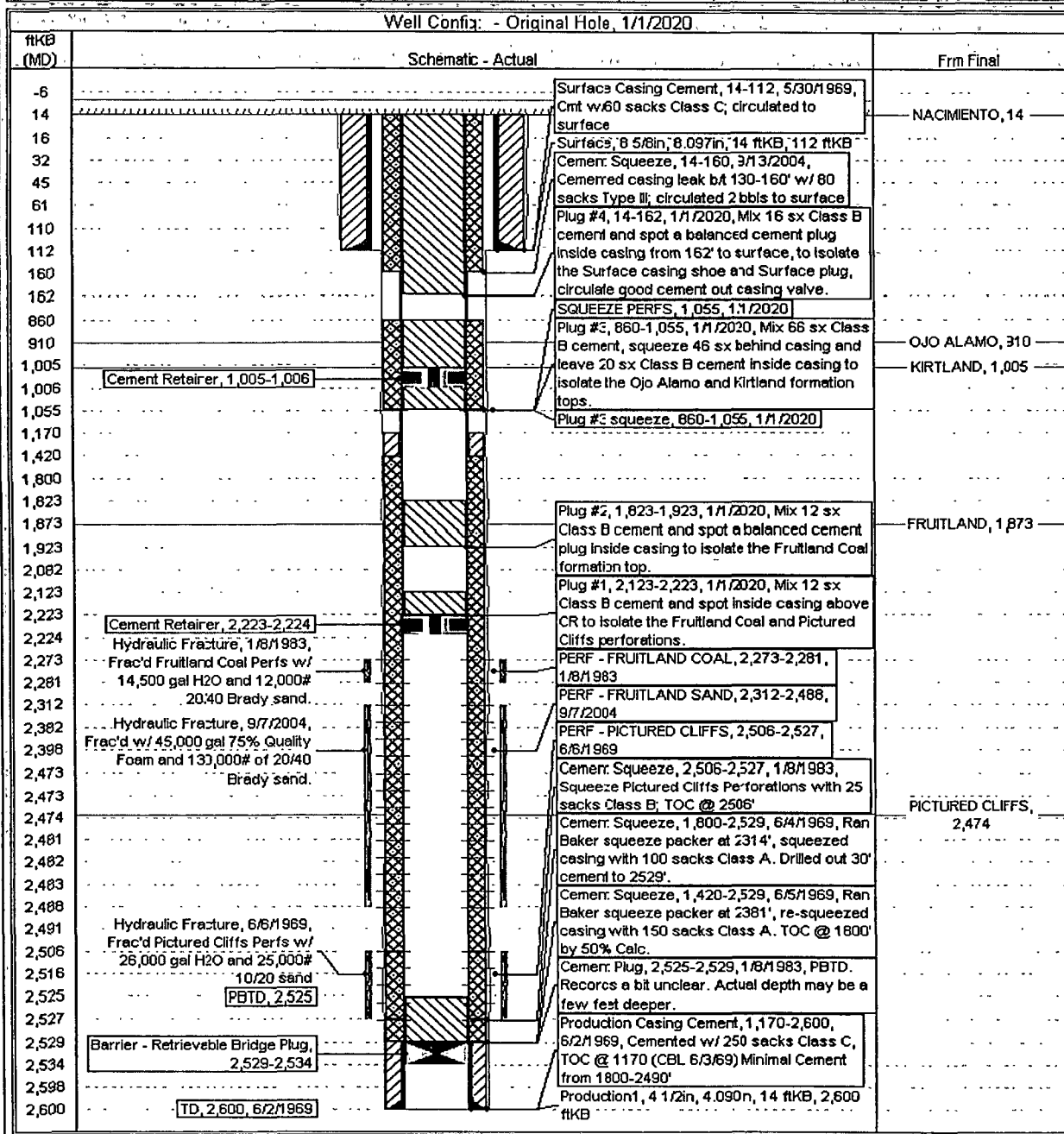
RECEIVED
B.L.M.-MAILROOM
2012 MAR 28 PM 2:00
STATE OFFICE
SANTA FE, NEW MEXICO

ConocoPhillips

Well Name: THOMPSON #13

Proposed Schematic

API/UN#	Surface Legal Location	Field Name	License No.	State/Province	Well Configuration Type	Edit
3004520509	NMFM,028-031N-012W	FLORA VISTA FRUITLAND GAS		NEW MEXICO		
Ground Elevation (ft)	Original S.P.T. Elevation (ft)	115-Ground DE Elevation (ft)	115-Casing Plug DE Elevation (ft)	115-Taglog Hanger DE Elevation (ft)		
6,120.00	6,134.00	14.00	6,134.00	6,134.00		



RECEIVED
B.L.M. - MAIL
2012 MAR 28 PM
STATE OFFICE
SANTA FE, NEW MEXICO

UNITED STATES DEPARTMENT OF THE INTERIOR
BUREAU OF LAND MANAGEMENT
FARMINGTON DISTRICT OFFICE
6251 COLLEGE BLVD.
FARMINGTON, NEW MEXICO 87402

Attachment to notice of
Intention to Abandon:

Re: Permanent Abandonment
Well: 13 Thompson

CONDITIONS OF APPROVAL

1. Plugging operations authorized are subject to the attached "General Requirements for Permanent Abandonment of Wells on Federal and Indian Lease."
2. Farmington Office is to be notified at least 24 hours before the plugging operations commence (505) 564-7750.
3. The following modifications to your plugging program are to be made:
 - a) Bring the top of the Pictured Cliffs/Fruitland plug to 2072'.
 - b) Place the Kirtland/Ojo Alamo plug from 890' – 731' inside and outside the 4 ½" casing.

You are also required to place cement excesses per 4.2 and 4.4 of the attached General Requirements.

Office Hours: 7:45 a.m. to 4:30 p.m.

RECEIVED
B.L.M.-MAILROOM
2012 MAR 28 PM 2:00
STATE OFFICE
SANTA FE, NEW MEXICO