

RECEIVED

**UNITED STATES
DEPARTMENT OF THE INTERIOR
BUREAU OF LAND MANAGEMENT**

MAR 28 2012

Sundry Notices and Reports on Wells

Farmington Field Office
Bureau of Land Management

1. **Type of Well**
GAS

2. **Name of Operator****BURLINGTON****RESOURCES OIL & GAS COMPANY LP**3. **Address & Phone No. of Operator**

PO Box 4289, Farmington, NM 87499 (505) 326-9700

4. **Location of Well, Footage, Sec., T, R, M**

Unit K (NESW), 1600' FSL & 1560' FWL, Section 3, T31N, R12W, NMPM

5. **Lease Number**
NMSF-0776486. **If Indian, All. or
Tribe Name**7. **Unit Agreement Name**8. **Well Name & Number**
Davis 11E9. **API Well No.**

30-045-23981

10. **Field and Pool**
Basin Dakota11. **County and State**
San Juan, NM**12. CHECK APPROPRIATE BOX TO INDICATE NATURE OF NOTICE, REPORT, OTHER DATA****Type of Submission**☒

Notice of Intent

Type of Action☒

Abandonment

☐ Change of Plans☐ Other --☐ Recompletion☐ New Construction☐ Subsequent Report☐ Plugging☐ Non-Routine Fracturing☐ Final Abandonment☐ Casing Repair☐ Water Shut off☐ Altering Casing☐ Conversion to Injection**13. Describe Proposed or Completed Operations**

Burlington Resources requests permission to P&A the subject well per the attached procedure, current and proposed wellbore schematics

RCVD APR 6 '12**OIL CONS. DIV.****DIST. 3****14. I hereby certify that the foregoing is true and correct.**Signed Crystal Tafoya Crystal TafoyaTitle: Staff Regulatory TechnicianDate 3/27/12

(This space for Federal or State Office use)

APPROVED BY Original Signed: Stephen Mason Title _____Date APR 04 2012

CONDITION OF APPROVAL, if any:

Title 18 U.S.C. Section 1001, makes it a crime for any person knowingly and willfully to make any department or agency of the United States any false, fictitious or fraudulent statements or representations as to any matter within its jurisdiction

NMOC

ConocoPhillips
DAVIS 11E
Expense - P&A

Lat 36° 55' 29.388" N

Long 108° 5' 8.7" W

PROCEDURE

Note: There are tools stuck downhole @ 7336', set locking three-slip stop before pulling tubing.

Note: This project requires a NMOCD C-144 CLEZ Closed-Loop System Permit for the use of an A-Plus steel tank to handle waste fluids circulated from the well and cement wash up. All cement volumes use 100% excess outside pipe and 50' excess inside pipe. The stabilizing wellbore fluid will be 8.3 ppg, sufficient to balance all exposed formation pressures. All cement will be ASTM Type II mixed at 15.6 ppg with a 1.18 cf/sk yield.

1. Hold pre-job safety meeting. Comply with all NMOCD, BLM, and COPC safety and environmental regulations. Test rig anchors prior to moving in rig.
2. MIRU work over rig Check casing, tubing, and bradenhead pressures and record them in Wellview.
3. When an existing primary valve (i.e. casing valve) is to be used, the existing piping should be removed and replaced with the appropriate piping for the intended operation.
4. RU blow lines from casing valves and begin blowing down casing pressure. Kill well with water, as necessary, and at least pump tubing capacity of water down tubing.
5. ND wellhead and NU BOPE. Function test BOP. PU and remove tubing hanger.
6. TOOH with tubing/rods (per pertinent data sheet). LD tubing bailer (if applicable).

Tubing: Yes **Size:** 2-3/8" **Length:** 7326'

7. Plug 1 (Dakota perms and formation top, 7012-7112', 12 Sacks Class B Cement)

PU CR for 4 1/2" 10.5# K-55 casing and RIH set at 7112'. Pressure test tubing to 1000 psi. Load casing with water and attempt to establish circulation. Mix 12 sx Class B cement and spot inside casing above CR to isolate the Dakota perforations and formation top. PUH.

8. Plug 2 (Gallup formation top, 6290-6390', 12 Sacks Class B Cement)

Mix 12 sx Class B cement and spot a balanced cement plug inside casing to isolate the Gallup formation top. PUH.

9. Plug 3 (Intermediate casing shoe and liner top, 4730-4970', 34 Sacks Class B Cement)

Mix 34 sx Class B cement and spot a balanced cement plug inside casing to isolate the intermediate casing shoe and liner top. PUH.

10. Plug 4 (Mesa Verde formation top, 4238-4338', 29 Sacks Class B Cement)

Mix 29 sx Class B cement and spot a balanced cement plug inside casing to isolate the Mesa Verde formation top PUH.

11. Plug 5 (Pictured Cliffs formation top, ~~2550-2650'~~ 29 Sacks Class B Cement)

Mix 29 sx Class B cement and spot a balanced cement plug inside casing to isolate the Pictured Cliffs formation top. PUH.

12. Plug 6 (Ojo Alamo, Kirtland, and Fruitland formation tops, ~~1471-2027'~~ 114 Sacks Class B Cement)

Mix 114 sx Class B cement and spot a balanced cement plug inside casing to isolate the Ojo Alamo, Kirtland, and Fruitland formation top. POOH.

13. Plug 7 (Surface casing shoe and surface plug, 0-283', 128 Sacks Class B Cement)

Perforate 3 HSC holes at 283'. Establish circulation out bradenhead with water and circulate BH annulus clean Mix 128 sx Class B cement and pump down production casing to circulate good cement out bradenhead. TOH and LD tubing. Shut in well and WOC.

14. Nipple down BOP and cut off casing below the casing flange. Install P&A marker with cement to comply with regulations. Rig down, move off location, cut off anchors, and restore location.

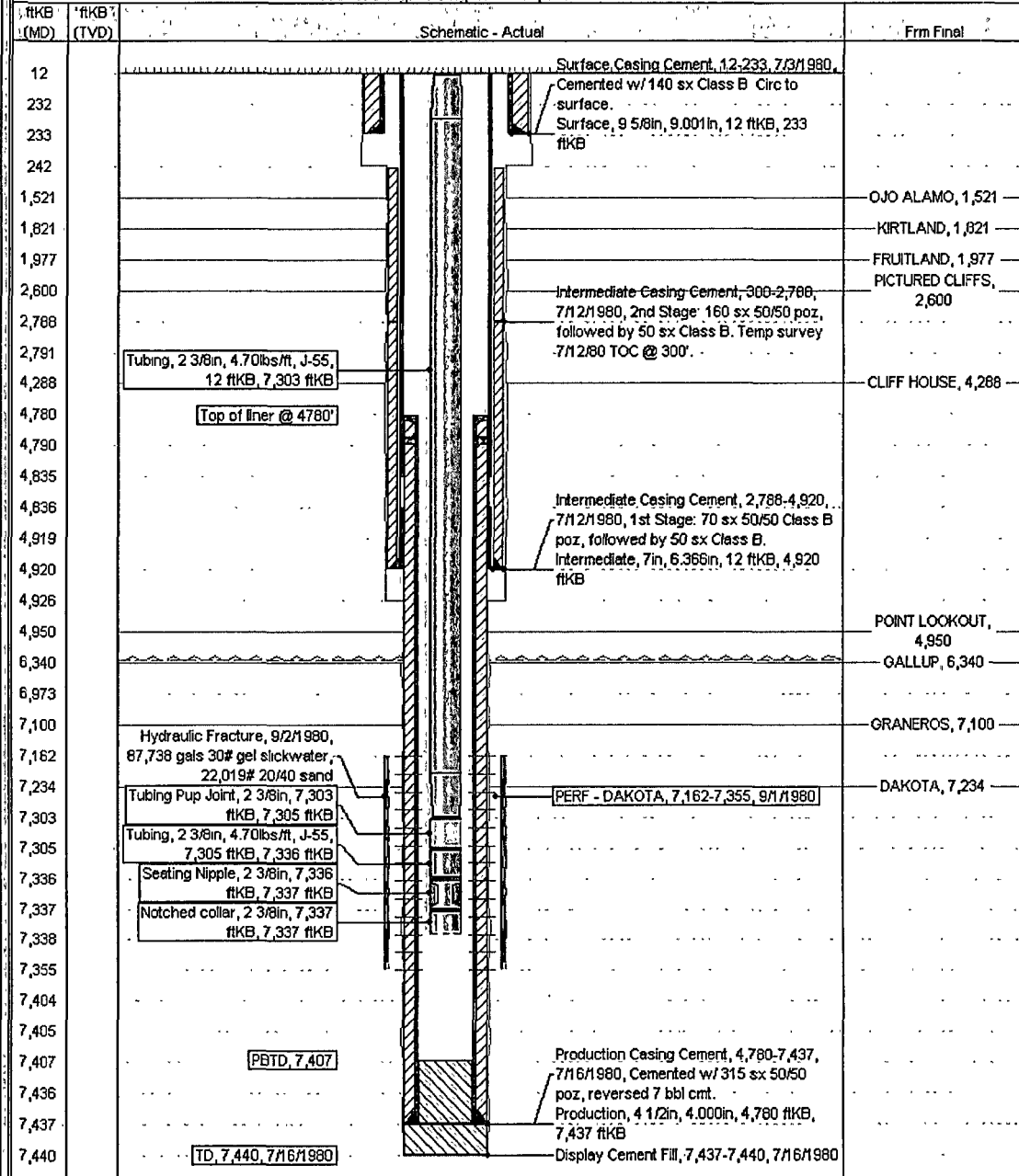
Current Schematic

ConocoPhillips

Well Name: DAVIS #11E

API/UVI 3004523981	Surface Legal Location NMPM.003-031N-012W	Field Name BASIN DAVID (PRODUCED GAS)	License No.	State/Province NEW MEXICO	Well Configuration Type Edit
Ground Elevation (ft) 6,198.00	Original KB/RT Elevation (ft) 6,210.00	KB-Grind Depth (ft) 12.00	KB-Casing Depth (ft) 6,210.00	KB-Tubing Hanger Depth (ft) 6,210.00	

Well Config: Original Hole, 3/12/2012 8:07:59 AM



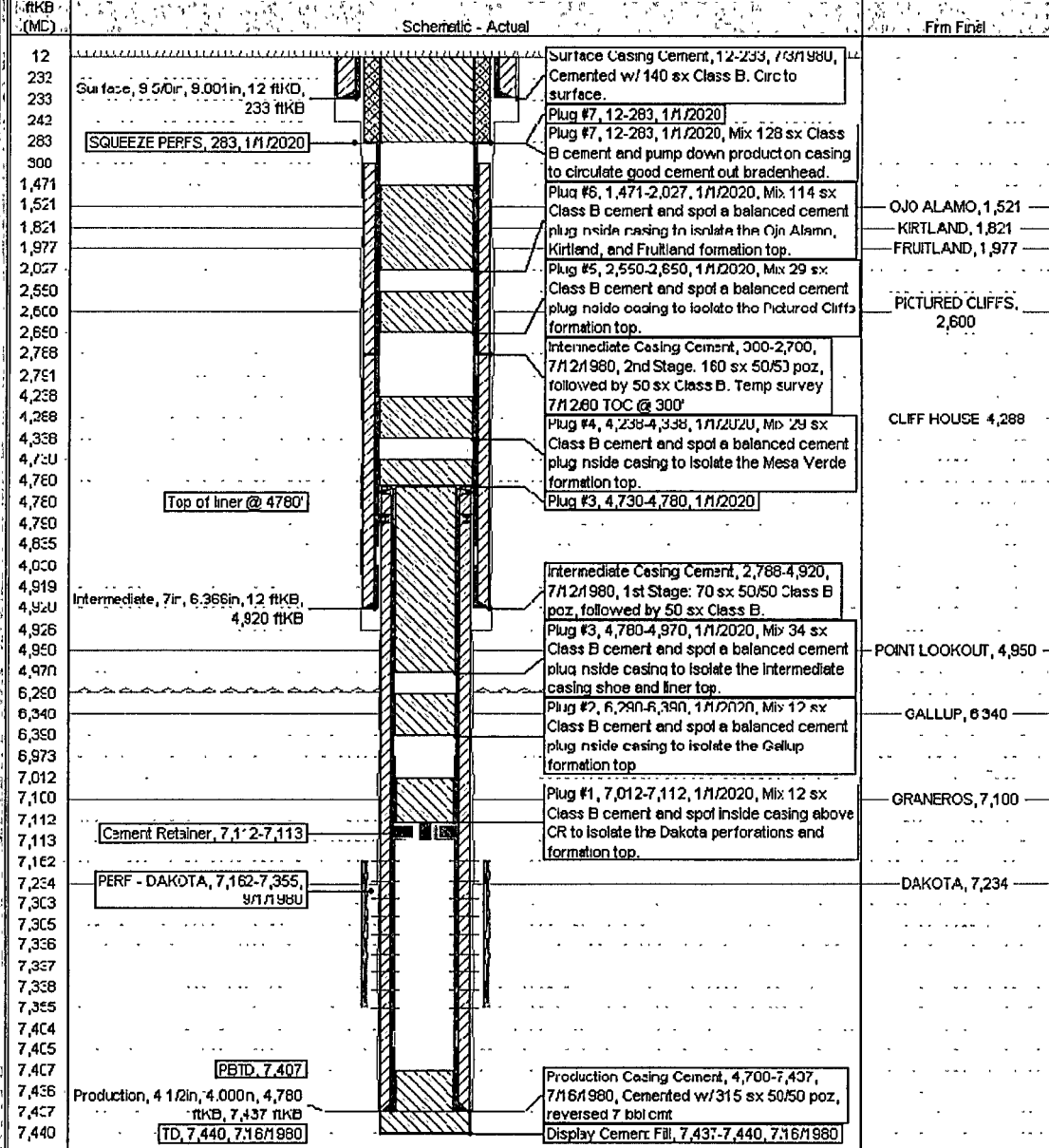
Current Schematic - Version 3

ConocoPhillips

Well Name: DAVIS #11E

API/USRI 3004523981	Surface legal location NMPM, 003-331N-012W	Field Name RAGBRAI, FA, 11/1/1980	License No. NEW MEXICO	State/Province NEW MEXICO	Well Configuration type Edn
Ground Elevation (ft) 6,198.00	Original BPT Elevation (ft) 6,210.00	IE-Casing Elevation (ft) 6,210.00	IE-Casing Elevation (ft) 6,210.00	IE-Casing Elevation (ft) 6,210.00	IE-Casing Elevation (ft) 6,210.00

Well Config - Original Hole, 1/1/2020



**UNITED STATES DEPARTMENT OF THE INTERIOR
BUREAU OF LAND MANAGEMENT
FARMINGTON DISTRICT OFFICE
6251 COLLEGE BLVD.
FARMINGTON, NEW MEXICO 87402**

Attachment to notice of
Intention to Abandon:

Re: Permanent Abandonment
Well: 11E Davis

CONDITIONS OF APPROVAL

1. Plugging operations authorized are subject to the attached "General Requirements for Permanent Abandonment of Wells on Federal and Indian Lease."

2. Farmington Office is to be notified at least 24 hours before the plugging operations commence (505) 564-7750.

3. The following modifications to your plugging program are to be made:

a) Place a cement plug from 3421' – 3321' to cover the Chacra top.

b) Place the Fruitland plug from 2412' – 2312'.

c) Place the Kirtland plug from 925' – 825' inside and outside the 7" casing.

Note: the Sundry Notice dated July 17, 1980 reports the top of cement @ 1200'.

You are also required to place cement excesses per 4.2 and 4.4 of the attached General Requirements.

Office Hours: 7:45 a.m. to 4:30 p.m.