

RECEIVED

submitted in lieu of Form 3160-5

UNITED STATES
DEPARTMENT OF THE INTERIOR
BUREAU OF LAND MANAGEMENT

MAR 28 2012

Farmington Field Office
Bureau of Land Management

Sundry Notices and Reports on Wells

1. Type of Well
GAS

2. Name of Operator
BURLINGTON
RESOURCES OIL & GAS COMPANY LP

3. Address & Phone No. of Operator

PO Box 4289, Farmington, NM 87499 (505) 326-9700

4. Location of Well, Footage, Sec., T, R, M

Unit F (SENW), 1695' FNL & 1820' FWL, Section 14, T29N, R12W, NMPM

5. Lease Number
NMSF-065557-A
6. If Indian, All. or
Tribe Name

7. Unit Agreement Name

8. Well Name & Number
Cornell 4R

9. API Well No.

30-045-30844

10. Field and Pool
Fulcher Kutz PC/Basin FC

11. County and State
San Juan, NM

12. CHECK APPROPRIATE BOX TO INDICATE NATURE OF NOTICE, REPORT, OTHER DATA

Type of Submission
☒ Notice of Intent

☐ Subsequent Report

☐ Final Abandonment

Type of Action
☒ Abandonment

☐ Recompletion

☐ Plugging

☐ Casing Repair

☐ Altering Casing

☐ Change of Plans

☐ New Construction

☐ Non-Routine Fracturing

☐ Water Shut off

☐ Conversion to Injection

☐ Other -

13. Describe Proposed or Completed Operations

Burlington Resources requests permission to P&A the subject well per the attached procedure, current and proposed wellbore schematics.

RCVD APR 5 '12

OIL CONS. DIV.

DIST. 3

14. I hereby certify that the foregoing is true and correct.

Signed Crystal Tafoya Crystal Tafoya

Title: Staff Regulatory Technician

Date 3/27/12

(This space for Federal or State Office use)

APPROVED BY Original Signed: Stephen Mason Title

Date APR 03 2012

CONDITION OF APPROVAL, if any:

Title 18 U.S.C. Section 1001, makes it a crime for any person knowingly and willfully to make any department or agency of the United States any false, fictitious or fraudulent statements or representations as to any matter within its jurisdiction

NMOC

ConocoPhillips
CORNELL 4R
Expense - P&A

Lat 36° 43' 43.032" N

Long 108° 4' 14.628" W

PROCEDURE

This project requires a NMOCD C-144 CLEZ Closed-Loop System Permit for the use of an A-Plus steel tank to handle waste fluids circulated from the well and cement wash up.

1. Hold pre-job safety meeting. Comply with all NMOCD, BLM, and COPC safety and environmental regulations. Test rig anchors prior to moving in rig.
2. MIRU work over rig. Check casing, tubing, and bradenhead pressures and record them in Wellview.
3. When an existing primary valve (i.e. casing valve) is to be used, the existing piping should be removed and replaced with the appropriate piping for the intended operation.
4. RU blow lines from casing valves and begin blowing down casing pressure. Kill well with water, as necessary.
5. TOOH with rods per pertinent data sheet. Kill well with water, as necessary, and at least pump tubing capacity of water down tubing.
6. ND wellhead and NU BOPE. Function test BOP. PU and remove tubing hanger.
7. TOOH with tubing (per pertinent data sheet).

| | | | | | |
|----------------|-----|--------------|--------|----------------|-------|
| Rods: | Yes | Size: | 1-1/4" | Length: | 1802' |
| Tubing: | Yes | Size: | 2-3/8" | Length: | 1808' |
| Packer: | No | Size: | | Depth: | |

If this well has rods or a packer, then modify the work sequence in step #2 as appropriate. Round trip casing scraper through deepest perforation or as deep as possible. **A CBL has been run and is on file for this well.**

All cement volumes use 100% excess outside pipe and 50' excess inside pipe. The stabilizing wellbore fluid will be 8.3 ppg, sufficient to balance all exposed formation pressures. All cement will be ASTM Type II mixed at 15.6 ppg with a 1.18 cf/sk yield.

8. Plug 1 (PC & Fruitland Coal, 1328-1428', 12 Sacks Class B Cement)

TIH and set 4-1/2" cement retainer at 1428'. Load hole with water and circulate well clean. Pressure test tubing to 1000#. Pressure test casing to 800#. If the casing does not test, then spot or tag subsequent plugs as appropriate. Mix 12 sxs Class B cement and spot inside the casing above the CR to isolate the Pictured Cliffs and Fruitland Coal intervals. PUH with tubing.

9. Plug 2 (Ojo Alamo & Kirtland, 318-579', 24 Sacks Class B Cement)

Mix 24 sxs of Class B cement and spot a balanced plug to cover the Ojo Alamo and Kirtland formation tops. PUH.

10. Plug 3 (Surface Shoe, 0-158', 16 Sacks Class B Cement)

Attempt to pressure test the bradenhead annulus to 300 PSI; note the volume to load. If the BH annulus holds pressure, then establish circulation out casing valve with water. Mix 16 sxs Class B cement and spot a balanced plug from 158' to surface, circulate good cement out casing valve. TOH and LD tubing. Shut well in and WOC. If the BH annulus does not test, then perforate at the appropriate depth and attempt to circulate cement to surface filling the casing from 158' and the annulus from the squeeze holes to surface. Shut in well and WOC.

11. Nipple down BOP and cut off casing below the casing flange. Install P&A marker with cement to comply with regulations. Rig down, move off location, cut off anchors, and restore location.

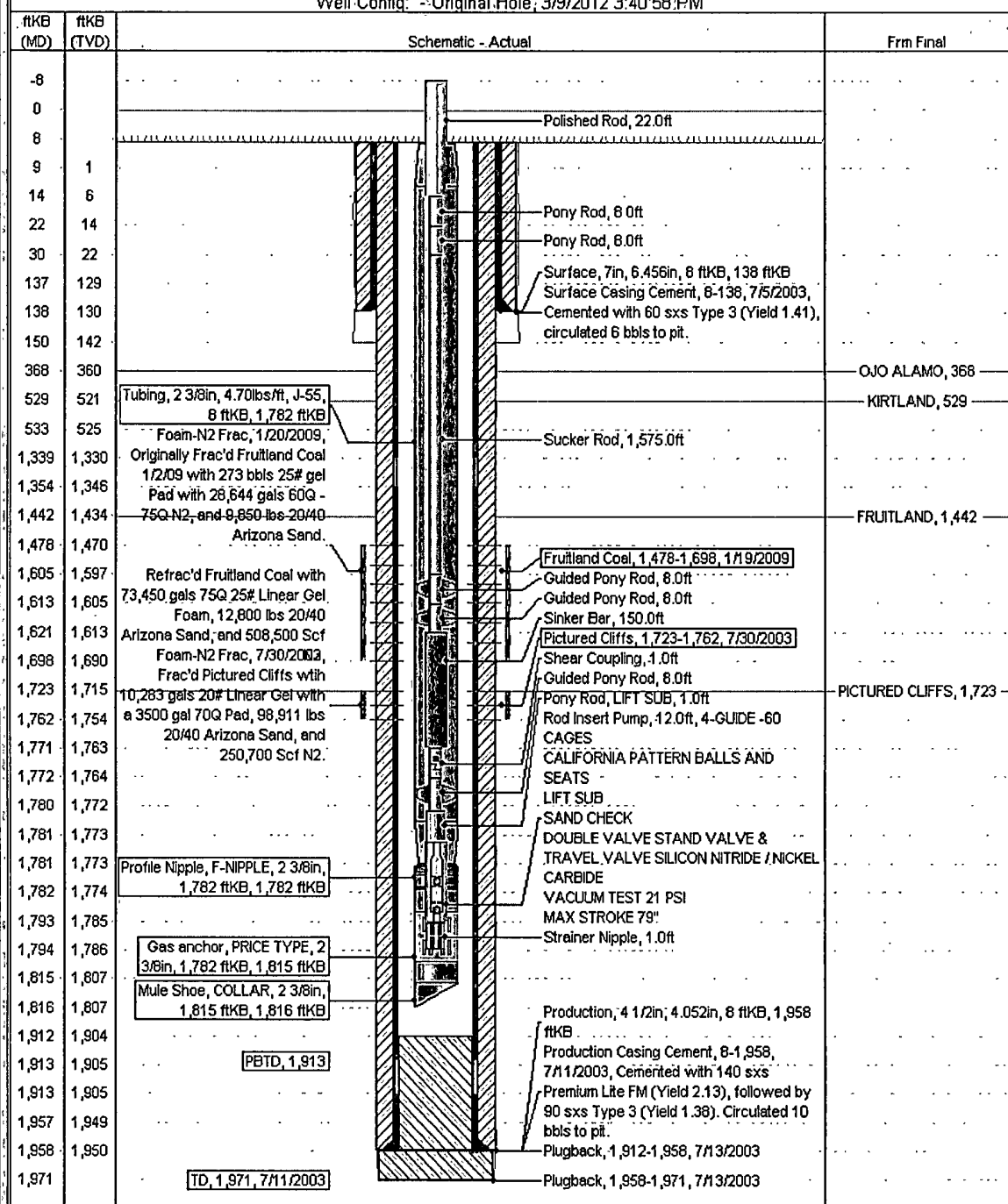
Current Schematic

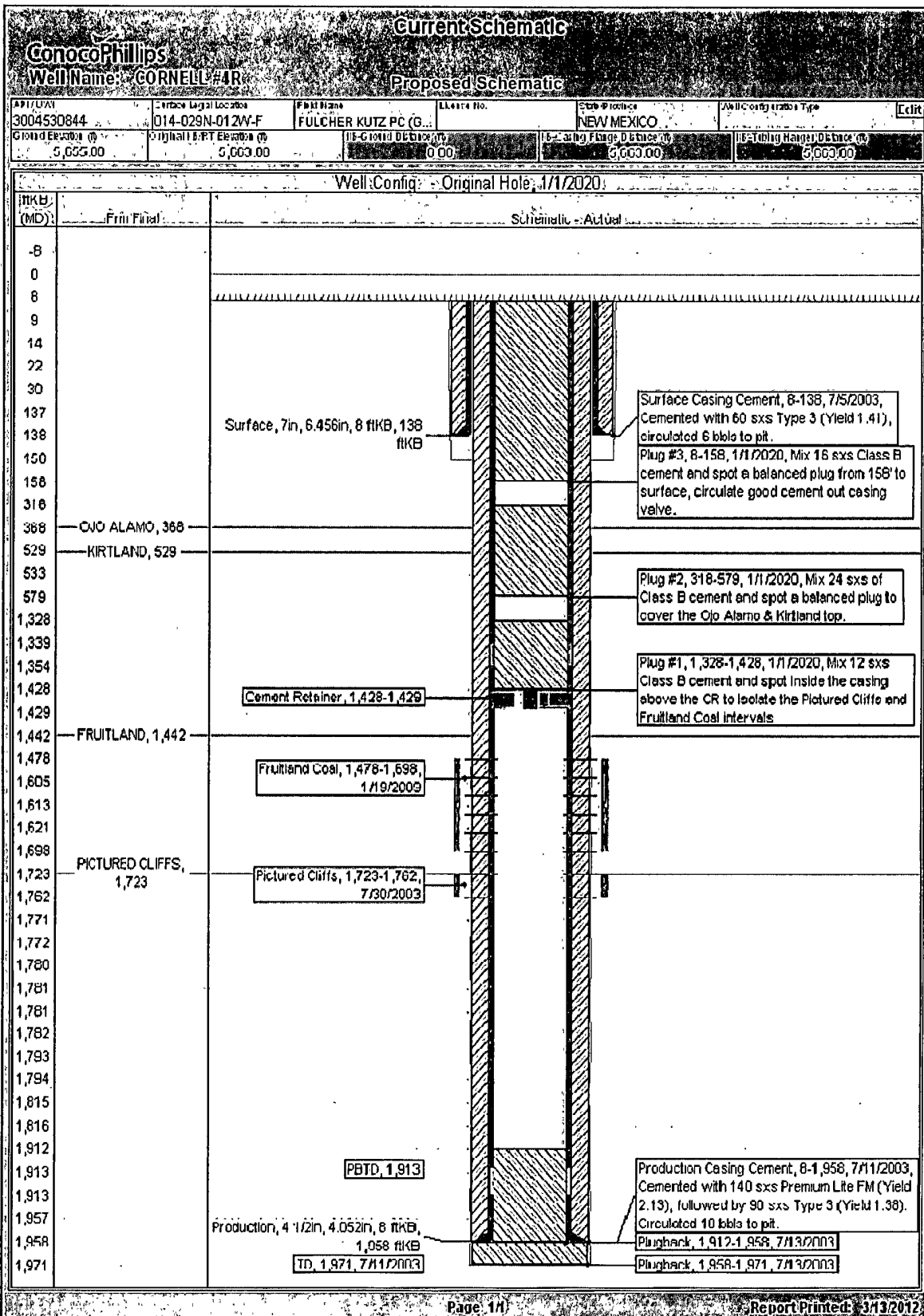
ConocoPhillips

Well Name: CORNELL #4R

| | | | | | | |
|----------------------------------|---|-------------------------------------|---|--|-------------------------|------|
| API/ UOM 3004530844 | Surface Legal Location 014-029N-012W-F | Field Name FULCHER KUTZ-PC (G... | License No. | State/ Province NEW MEXICO | Well Configuration Type | Edit |
| Gross Elevation (ft) 5,655.00 | Original K&RT Elevation (ft) 5,663.00 | K&RT Gross Distance (ft) 8.00 | K&RT Casing/ Flange Distance (ft) 5,663.00 | K&RT Tubing Hanger Distance (ft) 5,663.00 | | |

Well Config: --Original Hole, 3/9/2012 3:40:58 PM





**UNITED STATES DEPARTMENT OF THE INTERIOR
BUREAU OF LAND MANAGEMENT
FARMINGTON DISTRICT OFFICE
6251 COLLEGE BLVD.
FARMINGTON, NEW MEXICO 87402**

Attachment to notice of
Intention to Abandon:

Re: Permanent Abandonment
Well: 4R Cornell

CONDITIONS OF APPROVAL

1. Plugging operations authorized are subject to the attached "General Requirements for Permanent Abandonment of Wells on Federal and Indian Lease."
2. Farmington Office is to be notified at least 24 hours before the plugging operations commence (505) 564-7750.
3. The following modifications to your plugging program are to be made:
 - a) Place the Surface plug from 188' to surface.

You are also required to place cement excesses per 4.2 and 4.4 of the attached General Requirements.

Office Hours: 7:45 a.m. to 4:30 p.m.