

District I  
1625 N French Dr , Hobbs, NM 88240  
District II  
1301 W Grand Avenue, Artesia, NM 88210  
District III  
1000 Rio Brazos Road, Aztec, NM 87410  
District IV  
1220 S St Francis Dr , Santa Fe, NM 87505

State of New Mexico  
Energy Minerals and Natural Resources

Oil Conservation Division  
1220 South St. Francis Dr.  
Santa Fe, NM 87505

Form C-141  
Revised October 10, 2003

Submit 2 Copies to appropriate  
District Office in accordance  
with Rule 116 on back  
side of form

Release Notification and Corrective Action

30-045-27765 OPERATOR ☐ Initial Report ☒ Final Report

Name of Company <b>ConocoPhillips Company</b>	Contact <b>Shelly Cook-Cowden</b>
Address <b>3401 E. 30<sup>th</sup> St., Farmington, NM 87402</b>	Telephone No. <b>505-324-5140</b>
Facility Name <b>State Com 31-8 Unit #2</b>	Facility Type <b>Gas well API 3004527765</b>

Surface Owner <b>State</b>	Mineral Owner <b>State</b>	Lease No.
----------------------------	----------------------------	-----------

LOCATION OF RELEASE

Unit Letter M	Section 02	Township 31N	Range 08W	Feet from the 1225'	North/South Line SOUTH	Feet from the 1015'	East/West Line WEST	County San Juan
------------------	---------------	-----------------	--------------	------------------------	---------------------------	------------------------	------------------------	--------------------

Latitude 36.92193 ° N Longitude-107.64999 ° W

RCVD MAR 21 '12  
OIL CONS. DIV.  
DIST. 3

NATURE OF RELEASE

Type of Release <b>Produced Water</b>	Volume of Release. <b>22 BBL</b>	Volume Recovered. <b>50BBL</b>
Source of Release: <b>Water Tank</b>	Date and Hour of Occurrence: <b>Unknown</b>	Date and Hour of Discovery: <b>1/6/12 @ 2:00PM</b>
Was Immediate Notice Given? <input type="checkbox"/> Yes <input type="checkbox"/> No <input checked="" type="checkbox"/> Not Required	If YES, To Whom?	
By Whom?	Date and Hour	
Was a Watercourse Reached? <input type="checkbox"/> Yes <input checked="" type="checkbox"/> No	If YES, Volume Impacting the Watercourse.	
If a Watercourse was Impacted, Describe Fully *		
Describe Cause of Problem and Remedial Action Taken. *Water tank leaked due to a hole in the tank which released ~ 22BBL. The area had additional storm water/melt/runoff that was also removed form the bermed area. The Well was shut in and the tank replaced		
Describe Area Affected and Cleanup Action Taken. *All the fluid remained within the berm ~ 50BBL was recovered which included residual melt/run-off. <b>Excavation and confirmation sampling occurred. Analytical results were below the regulatory standards set forth in the NMOCD Guidelines for Remediation of Leaks, Spills and Releases; therefore no further action is needed.</b>		
I hereby certify that the information given above is true and complete to the best of my knowledge and understand that pursuant to NMOCD rules and regulations all operators are required to report and/or file certain release notifications and perform corrective actions for releases which may endanger public health or the environment. The acceptance of a C-141 report by the NMOCD marked as "Final Report" does not relieve the operator of liability should their operations have failed to adequately investigate and remediate contamination that pose a threat to ground water, surface water, human health or the environment In addition, NMOCD acceptance of a C-141 report does not relieve the operator of responsibility for compliance with any other federal, state, or local laws and/or regulations.		

Signature. <i>Shelly Cook-Cowden</i>		<b>OIL CONSERVATION DIVISION</b>	
Printed Name: <b>Shelly Cook-Cowden</b>		Approved by District Supervisor: <i>Jonathan D. Kelly</i>	
Title. <b>Field Environmental Specialist</b>		Approval Date: <b>3/21/2012</b> Expiration Date:	
E-mail Address: <b>Shelly.g.Cook-Cowden@ConocoPhillips.com</b>		Conditions of Approval:	
Date <b>February 10, 2012</b> Phone: <b>505-324-5140</b>		Attached <input type="checkbox"/>	

\* Attach Additional Sheets If Necessary

NJK1208154651



Animas Environmental Services, LLC

[www.animasenvironmental.com](http://www.animasenvironmental.com)

February 8, 2012

Shelly Cook-Cowden  
ConocoPhillips  
3401 East 30<sup>th</sup> Street, Office #490  
Farmington, NM 87402

624 E. Comanche  
Farmington, NM 87401  
505-564-2281

Durango, Colorado  
970-403-3274

**RE: Release Assessment Report for the State Com 31-8 #2  
San Juan County, New Mexico**

Dear Ms. Cook-Cowden:

On January 31, 2012, Animas Environmental Services, LLC (AES) completed confirmation soil sampling associated with a 22.7 barrel (bbl) release of produced water from a 500 bbl storage tank at the State Com 31-8 #2, located in San Juan County, New Mexico. Note that ConocoPhillips (CoP) recovered a total of 50.6 bbls of water due to snow melt accumulation within the secondary containment area.

---

## 1.0 Site Information

### 1.1 Location

Location - SW¼ SW¼, Section 2, T31N, R8W, San Juan County, New Mexico

Latitude/Longitude - N36.92186 and W107.65080, respectively

Surface Owner – State of New Mexico

Figure 1 - Topographic Site Location Map

Figure 2 - Sample Locations and Results, January 2012

### 1.2 NMOCD Ranking

Prior to site work, the New Mexico Oil Conservation Division (NMOCD) database was reviewed, and no records for the State Com 31-8 #2, or nearby well locations with similar surface elevations, were found to assist in determining NMOCD ranking. One report, dated March 8, 2004, for a produced water spill was reviewed, but no ranking information was included. Additionally, the New Mexico Office of the State Engineer (NMOSE) database was reviewed for nearby private domestic water wells, and no nearby water well records were located.

Once on-site, AES personnel assessed the NMOCD ranking criteria using topographical interpretation, Global Position System (GPS) elevation readings, and visual reconnaissance. Based on an elevation differential between the State Com 31-8 #2

(6,595 feet above mean sea level (amsl)) and the base of Negro Canyon (6,096 feet amsl), groundwater is estimated to be at least 500 feet below ground surface (bgs). Distance to the nearest surface water body, Negro Canyon (Navajo Reservoir), is approximately 3,000 feet southeast of the location. No domestic or private water sources were identified within 1,000 feet of the location. Therefore, the location was assigned an NMOCD ranking of zero.

### 1.3 Release Assessment

AES was initially contacted by Shelly Cook-Cowden of CoP on January 30, 2012, and on January 31, 2012, Ross Kennemer of AES completed the confirmation soil sampling. No CoP representatives were on-site during the field work, which included collecting a 5-point composite sample of produced water impacted soil within the storage tank secondary containment area. Discrete sample locations, which were used to make the composite, are shown on Figure 2.

---

## 2.0 Soil Sampling

A de-contaminated stainless steel sampling trowel was used to collect five discrete soil samples from the surface of the impacted soil, and the soil samples were then thoroughly mixed within a sampling bag. One composite sample was collected from the combined sample volume and field-screened for volatile organic compounds (VOCs) and total petroleum hydrocarbon (TPH). Field-screening for VOC vapors was conducted with a photo-ionization detector (PID) organic vapor meter (OVM). The TPH sample was analyzed per USEPA Method 418.1 using a Buck Scientific Model HC-404 Total Hydrocarbon Analyzer Infrared Spectrometer (Buck). Soil sample results are presented below in Table 1, and sample locations are included on Figure 2.

Table 1. Soil OVM and TPH Field Screening Analytical Results  
State Com 31-8 #2 Release Assessment, January 2012

<i>Sample ID</i>	<i>Date Sampled</i>	<i>Sample Depth (ft bgs)</i>	<i>OVM Reading (ppm)</i>	<i>Field TPH (mg/kg)</i>
<i>NMOCD Action Level</i>			<i>100</i>	<i>5,000</i>
C-1 5-Point Composite	01/31/12	Surface	0.1	209

---

### 3.0 Conclusions and Recommendations

AES completed confirmation soil sampling associated with an 22.7 bbl release of produced water from a 500 bbl storage tank at the State Com 31-8 #2 on January 31, 2012. Based on visual observations, the spill was fully contained within the secondary containment berm surrounding the three produced water storage tanks. Some standing water, which could be from snow melt, and water saturated soils were observed in the southern half of the secondary containment area.

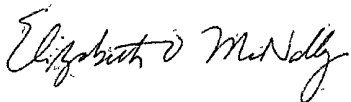
VOC and TPH field-screening results were below applicable NMOCD action levels and indicate that there were no petroleum hydrocarbon impacts resulting from the produced water release. No additional soil sampling or mitigation activities are recommended.

If you have any questions about this report or site conditions, please do not hesitate to contact me at (505) 564-2281.

Sincerely,



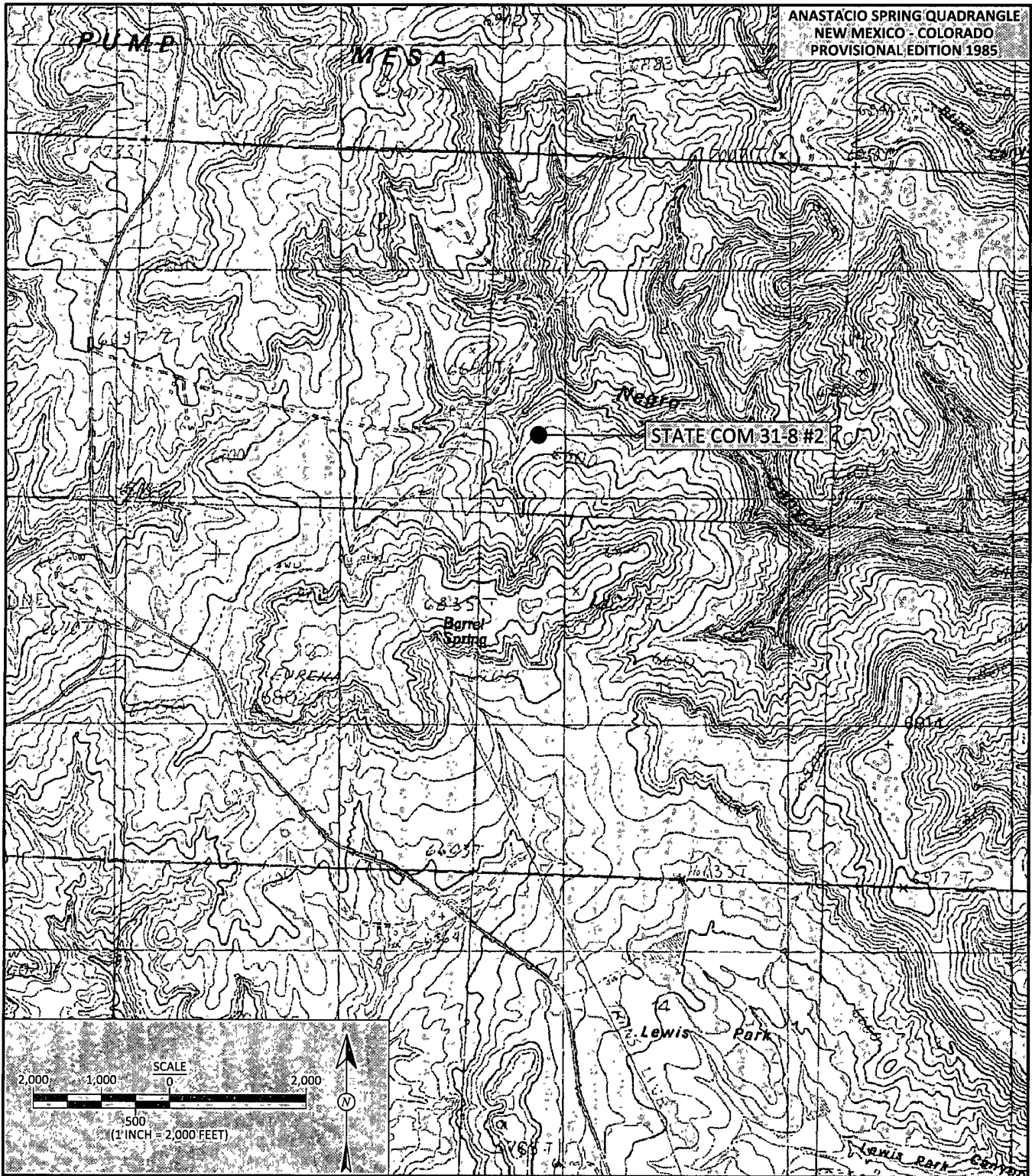
Ross Kennemer  
Sr. Project Manager



Elizabeth McNally, PE

#### Attachments:

- Figure 1. Topographic Site Location Map
- Figure 2. Sample Locations and Results, January 2012
- AES Field Screening Report State Com 31-8 #2 020212



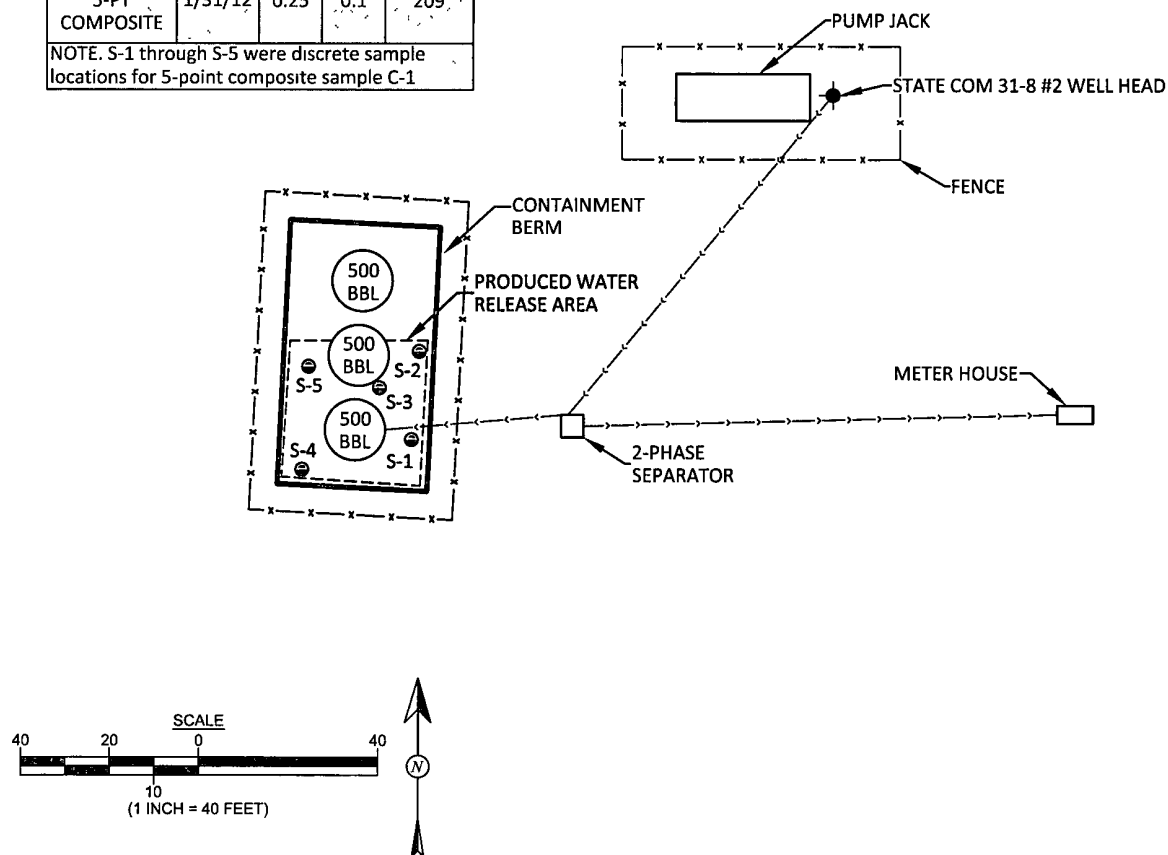
<b>DRAWN BY:</b> C. Lameman	<b>DATE DRAWN:</b> February 1, 2012
<b>REVISIONS BY:</b> C. Lameman	<b>DATE REVISED:</b> February 1, 2012
<b>CHECKED BY:</b> R. Kennemer	<b>DATE CHECKED:</b> February 1, 2012
<b>APPROVED BY:</b> E. McNally	<b>DATE APPROVED:</b> February 1, 2012

**FIGURE 1**

**TOPOGRAPHIC SITE LOCATION MAP**  
 ConocoPhillips  
 STATE COM 31-8 #2  
 SAN JUAN COUNTY, NEW MEXICO  
 SW¼, SW¼, SECTION 2, T31N, R8W  
 N36.92186°, W107.65080°

LEGEND	
●	SAMPLE LOCATIONS

SOIL SAMPLE RESULTS				
Sample ID	Date	Depth (ft)	OVM PID (ppm)	Field TPH 418.1 (mg/kg)
C-1 5-PT COMPOSITE	1/31/12	0.25	0.1	209
NOTE. S-1 through S-5 were discrete sample locations for 5-point composite sample C-1				



Animas Environmental Services, LLC

<b>DRAWN BY:</b> C. Lameman	<b>DATE DRAWN:</b> February 1, 2012
<b>REVISIONS BY:</b> C. Lameman	<b>DATE REVISED:</b> February 1, 2012
<b>CHECKED BY:</b> R. Kennemer	<b>DATE CHECKED:</b> February 1, 2012
<b>APPROVED BY:</b> E McNally	<b>DATE APPROVED:</b> February 8, 2012

**FIGURE 2**

**SAMPLE LOCATIONS AND RESULTS**  
 JANUARY 2012  
 ConocoPhillips  
 STATE COM 31-8 #2  
 SAN JUAN COUNTY, NEW MEXICO  
 SW¼, SW¼, SECTION 2, T31N, R8W  
 N36.92186°, W107.65080°

# AES Field Screening Report



Animas Environmental Services, LLC

www.animasenvironmental.com

624 E. Comanche  
Farmington, NM 87401  
505-564-2281

Durango, Colorado  
970-403-3274

Client: ConocoPhillips

Project Location: State Com 31-8 #2

Date: 2/2/2012

Matrix: Soil

Sample ID	Collection Date	Time of Sample Collection	Sample Location	OVM (ppm)	Field Chloride (mg/kg)	Field TPH Analysis Time	Field TPH* (mg/kg)	TPH PQL (mg/kg)	DF	TPH Analysts Initials
C-1	1/31/2012	15:15	5 pt composite on surface	0.1	NA	2/2/2012 @ 12:36:00 PM	209	20.0	1	TCR

PQL Practical Quantitation Limit  
ND Not Detected at the Reporting Limit  
DF Dilution Factor  
NA Not Analyzed

\*Field TPH concentrations recorded may be below PQL.

Field Chloride - Quantab Chloride Titrators or Drop Count Titration with Silver Nitrate

Total Petroleum Hydrocarbons - USEPA 418.1

Analyst:

*Jami Ross*