

District I
1625 N French Dr, Hobbs, NM 88240
District II
1301 W Grand Avenue, Artesia, NM 88210
District III
1000 Rio Brazos Road, Aztec, NM 87410
District IV
1220 S St Francis Dr, Santa Fe, NM 87505

State of New Mexico
Energy Minerals and Natural Resources
Department
Oil Conservation Division
1220 South St. Francis Dr.
Santa Fe, NM 87505

Form C-144
July 21, 2008

For temporary pits, closed-loop systems, and below-grade tanks, submit to the appropriate NMOCD District Office
For permanent pits and exceptions submit to the Santa Fe Environmental Bureau office and provide a copy to the appropriate NMOCD District Office.

Pit, Closed-Loop System, Below-Grade Tank, or
Proposed Alternative Method Permit or Closure Plan Application

8350 Type of action: ☒ Permit of a pit, closed-loop system, below-grade tank, or proposed alternative method
☐ Closure of a pit, closed-loop system, below-grade tank, or proposed alternative method
☐ Modification to an existing permit
☐ Closure plan only submitted for an existing permitted or non-permitted pit, closed-loop system, below-grade tank, or proposed alternative method

Instructions: Please submit one application (Form C-144) per individual pit, closed-loop system, below-grade tank or alternative request

Please be advised that approval of this request does not relieve the operator of liability should operations result in pollution of surface water, ground water or the environment. Nor does approval relieve the operator of its responsibility to comply with any other applicable governmental authority's rules, regulations or ordinances.

1.
Operator McElvain Oil & Gas Properties, Inc. OGRID # 22044
Address 1050 17th Street, Suite 1800, Denver, CO 80265
Facility or well name Brown Federal #2
API Number: 30-059-30875 OCD Permit Number: _____
U/L or Qtr/Qtr L Section 9 Township 32N Range 10W County San Juan
Center of Proposed Design: Latitude 36.99828 N Longitude -107.89269 W NAD: ☒ 1927 ☐ 1983
Surface Owner: ☒ Federal ☐ State ☐ Private ☐ Tribal Trust or Indian Allotment

2.
☐ **Pit:** Subsection F or G of 19 15 17 11 NMAC
Temporary: ☐ Drilling ☐ Workover
☐ Permanent ☐ Emergency ☐ Cavitation ☐ P&A
☐ Lined ☐ Unlined Liner type: Thickness _____ mil ☐ LLDPE ☐ HDPE ☐ PVC ☐ Other _____
☐ String-Reinforced
Liner Seams: ☐ Welded ☐ Factory ☐ Other _____ Volume _____ bbl Dimensions: L _____ x W _____ x D _____

3.
☐ **Closed-loop System:** Subsection H of 19.15.17 11 NMAC
Type of Operation ☐ P&A ☐ Drilling a new well ☐ Workover or Drilling (Applies to activities which require prior approval of a permit or notice of intent)
☐ Drying Pad ☐ Above Ground Steel Tanks ☐ Haul-off Bins ☐ Other _____
☐ Lined ☐ Unlined Liner type Thickness _____ mil ☐ LLDPE ☐ HDPE ☐ PVC ☐ Other _____
Liner Seams. ☐ Welded ☐ Factory ☐ Other _____

4.
☒ **Below-grade tank:** Subsection I of 19.15.17 11 NMAC
Volume 95 45 bbl Type of fluid Oil & Water
Tank Construction material Steel
☒ Secondary containment with leak detection ☐ Visible sidewalls, liner, 6-inch lift and automatic overflow shut-off
☐ Visible sidewalls and liner ☒ Visible sidewalls only ☐ Other _____
Liner type: Thickness _____ mil ☐ HDPE ☐ PVC ☐ Other _____

5.
☐ **Alternative Method:**
Submittal of an exception request is required Exceptions must be submitted to the Santa Fe Environmental Bureau office for consideration of approval



6.

Fencing: Subsection D of 19.15.17.11 NMAC (*Applies to permanent pits, temporary pits, and below-grade tanks*)

- ☐ Chain link, six feet in height, two strands of barbed wire at top (*Required if located within 1000 feet of a permanent residence, school, hospital, institution or church*)
- ☐ Four foot height, four strands of barbed wire evenly spaced between one and four feet
- ☒ Alternate. Please specify 6' Chain Link

7.

Netting: Subsection E of 19.15 17.11 NMAC (*Applies to permanent pits and permanent open top tanks*)

- ☐ Screen ☐ Netting ☒ Other Expanded Metal
- ☐ Monthly inspections (If netting or screening is not physically feasible)

8.

Signs: Subsection C of 19.15 17 11 NMAC

- ☐ 12"x 24", 2" lettering, providing Operator's name, site location, and emergency telephone numbers
- ☒ Signed in compliance with 19 15 3 103 NMAC

9.

Administrative Approvals and Exceptions:

Justifications and/or demonstrations of equivalency are required. Please refer to 19 15.17 NMAC for guidance.

Please check a box if one or more of the following is requested, if not leave blank:

- ☐ Administrative approval(s) Requests must be submitted to the appropriate division district or the Santa Fe Environmental Bureau office for consideration of approval
- ☐ Exception(s) Requests must be submitted to the Santa Fe Environmental Bureau office for consideration of approval

10.

Siting Criteria (regarding permitting): 19 15.17.10 NMAC

Instructions: The applicant must demonstrate compliance for each siting criteria below in the application. Recommendations of acceptable source material are provided below. Requests regarding changes to certain siting criteria may require administrative approval from the appropriate district office or may be considered an exception which must be submitted to the Santa Fe Environmental Bureau office for consideration of approval. Applicant must attach justification for request. Please refer to 19.15.17.10 NMAC for guidance. Siting criteria does not apply to drying pads or above-grade tanks associated with a closed-loop system.

Ground water is less than 50 feet below the bottom of the temporary pit, permanent pit, or below-grade tank.	<input type="checkbox"/> Yes <input checked="" type="checkbox"/> No
- NM Office of the State Engineer - iWATERS database search, USGS, Data obtained from nearby wells	
Within 300 feet of a continuously flowing watercourse, or 200 feet of any other significant watercourse or lakebed, sinkhole, or playa lake (measured from the ordinary high-water mark).	<input type="checkbox"/> Yes <input checked="" type="checkbox"/> No
- Topographic map. Visual inspection (certification) of the proposed site	
Within 300 feet from a permanent residence, school, hospital, institution, or church in existence at the time of initial application. (<i>Applies to temporary, emergency, or cavitation pits and below-grade tanks</i>)	<input type="checkbox"/> Yes <input type="checkbox"/> No
- Visual inspection (certification) of the proposed site, Aerial photo; Satellite image	<input checked="" type="checkbox"/> NA
Within 1000 feet from a permanent residence, school, hospital, institution, or church in existence at the time of initial application. (<i>Applies to permanent pits</i>)	<input type="checkbox"/> Yes <input type="checkbox"/> No
- Visual inspection (certification) of the proposed site, Aerial photo, Satellite image	<input checked="" type="checkbox"/> NA
Within 500 horizontal feet of a private, domestic fresh water well or spring that less than five households use for domestic or stock watering purposes, or within 1000 horizontal feet of any other fresh water well or spring, in existence at the time of initial application.	<input type="checkbox"/> Yes <input checked="" type="checkbox"/> No
- NM Office of the State Engineer - iWATERS database search, Visual inspection (certification) of the proposed site	
Within incorporated municipal boundaries or within a defined municipal fresh water well field covered under a municipal ordinance adopted pursuant to NMSA 1978, Section 3-27-3, as amended	<input type="checkbox"/> Yes <input checked="" type="checkbox"/> No
- Written confirmation or verification from the municipality, Written approval obtained from the municipality	
Within 500 feet of a wetland	<input type="checkbox"/> Yes <input checked="" type="checkbox"/> No
- US Fish and Wildlife Wetland Identification map, Topographic map; Visual inspection (certification) of the proposed site	
Within the area overlying a subsurface mine.	<input type="checkbox"/> Yes <input checked="" type="checkbox"/> No
- Written confirmation or verification or map from the NM EMNRD-Mining and Mineral Division	
Within an unstable area	<input type="checkbox"/> Yes <input checked="" type="checkbox"/> No
- Engineering measures incorporated into the design; NM Bureau of Geology & Mineral Resources, USGS; NM Geological Society, Topographic map	
Within a 100-year floodplain.	<input type="checkbox"/> Yes <input checked="" type="checkbox"/> No
- FEMA map	

11.

Temporary Pits, Emergency Pits, and Below-grade Tanks Permit Application Attachment Checklist: Subsection B of 19.15.17.9 NMAC**Instructions:** Each of the following items must be attached to the application. Please indicate, by a check mark in the box, that the documents are attached.

- ☐ Hydrogeologic Report (Below-grade Tanks) - based upon the requirements of Paragraph (4) of Subsection B of 19.15.17.9 NMAC
- ☐ Hydrogeologic Data (Temporary and Emergency Pits) - based upon the requirements of Paragraph (2) of Subsection B of 19.15.17.9 NMAC
- ☐ Siting Criteria Compliance Demonstrations - based upon the appropriate requirements of 19.15.17.10 NMAC
- ☐ Design Plan - based upon the appropriate requirements of 19.15.17.11 NMAC
- ☐ Operating and Maintenance Plan - based upon the appropriate requirements of 19.15.17.12 NMAC
- ☐ Closure Plan (Please complete Boxes 14 through 18, if applicable) - based upon the appropriate requirements of Subsection C of 19.15.17.9 NMAC and 19.15.17.13 NMAC

☐ Previously Approved Design (attach copy of design) API Number: _____ or Permit Number _____

12.

Closed-loop Systems Permit Application Attachment Checklist: Subsection B of 19.15.17.9 NMAC**Instructions:** Each of the following items must be attached to the application. Please indicate, by a check mark in the box, that the documents are attached.

- ☐ Geologic and Hydrogeologic Data (only for on-site closure) - based upon the requirements of Paragraph (3) of Subsection B of 19.15.17.9 NMAC
- ☐ Siting Criteria Compliance Demonstrations (only for on-site closure) - based upon the appropriate requirements of 19.15.17.10 NMAC
- ☐ Design Plan - based upon the appropriate requirements of 19.15.17.11 NMAC
- ☐ Operating and Maintenance Plan - based upon the appropriate requirements of 19.15.17.12 NMAC
- ☐ Closure Plan (Please complete Boxes 14 through 18, if applicable) - based upon the appropriate requirements of Subsection C of 19.15.17.9 NMAC and 19.15.17.13 NMAC

☐ Previously Approved Design (attach copy of design) API Number: _____

☐ Previously Approved Operating and Maintenance Plan API Number: _____ (Applies only to closed-loop system that use above ground steel tanks or haul-off bins and propose to implement waste removal for closure)

13.

Permanent Pits Permit Application Checklist: Subsection B of 19.15.17.9 NMAC**Instructions:** Each of the following items must be attached to the application. Please indicate, by a check mark in the box, that the documents are attached.

- ☐ Hydrogeologic Report - based upon the requirements of Paragraph (1) of Subsection B of 19.15.17.9 NMAC
- ☐ Siting Criteria Compliance Demonstrations - based upon the appropriate requirements of 19.15.17.10 NMAC
- ☐ Climatological Factors Assessment
- ☐ Certified Engineering Design Plans - based upon the appropriate requirements of 19.15.17.11 NMAC
- ☐ Dike Protection and Structural Integrity Design - based upon the appropriate requirements of 19.15.17.11 NMAC
- ☐ Leak Detection Design - based upon the appropriate requirements of 19.15.17.11 NMAC
- ☐ Liner Specifications and Compatibility Assessment - based upon the appropriate requirements of 19.15.17.11 NMAC
- ☐ Quality Control/Quality Assurance Construction and Installation Plan
- ☐ Operating and Maintenance Plan - based upon the appropriate requirements of 19.15.17.12 NMAC
- ☐ Freeboard and Overtopping Prevention Plan - based upon the appropriate requirements of 19.15.17.11 NMAC
- ☐ Nuisance or Hazardous Odors, including H₂S, Prevention Plan
- ☐ Emergency Response Plan
- ☐ Oil Field Waste Stream Characterization
- ☐ Monitoring and Inspection Plan
- ☐ Erosion Control Plan
- ☐ Closure Plan - based upon the appropriate requirements of Subsection C of 19.15.17.9 NMAC and 19.15.17.13 NMAC

14.

Proposed Closure: 19.15.17.13 NMAC**Instructions:** Please complete the applicable boxes, Boxes 14 through 18, in regards to the proposed closure plan.

Type: ☐ Drilling ☐ Workover ☐ Emergency ☐ Cavitation ☐ P&A ☐ Permanent Pit ☐ Below-grade Tank ☐ Closed-loop System

☐ Alternative

Proposed Closure Method: ☐ Waste Excavation and Removal

☐ Waste Removal (Closed-loop systems only)

☐ On-site Closure Method (Only for temporary pits and closed-loop systems)

☐ In-place Burial ☐ On-site Trench Burial

☐ Alternative Closure Method (Exceptions must be submitted to the Santa Fe Environmental Bureau for consideration)

15.

Waste Excavation and Removal Closure Plan Checklist: (19.15.17.13 NMAC) **Instructions:** Each of the following items must be attached to the closure plan. Please indicate, by a check mark in the box, that the documents are attached.

- ☐ Protocols and Procedures - based upon the appropriate requirements of 19.15.17.13 NMAC
- ☐ Confirmation Sampling Plan (if applicable) - based upon the appropriate requirements of Subsection F of 19.15.17.13 NMAC
- ☐ Disposal Facility Name and Permit Number (for liquids, drilling fluids and drill cuttings)
- ☐ Soil Backfill and Cover Design Specifications - based upon the appropriate requirements of Subsection H of 19.15.17.13 NMAC
- ☐ Re-vegetation Plan - based upon the appropriate requirements of Subsection I of 19.15.17.13 NMAC
- ☐ Site Reclamation Plan - based upon the appropriate requirements of Subsection G of 19.15.17.13 NMAC

16.

Waste Removal Closure For Closed-loop Systems That Utilize Above Ground Steel Tanks or Haul-off Bins Only: (19.15.17.13.D NMAC)

Instructions: Please identify the facility or facilities for the disposal of liquids, drilling fluids and drill cuttings. Use attachment if more than two facilities are required.

Disposal Facility Name: _____ Disposal Facility Permit Number _____

Disposal Facility Name: _____ Disposal Facility Permit Number _____

Will any of the proposed closed-loop system operations and associated activities occur on or in areas that *will not* be used for future service and operations?

☐ Yes (If yes, please provide the information below) ☐ No

Required for impacted areas which will not be used for future service and operations

☐ Soil Backfill and Cover Design Specifications - based upon the appropriate requirements of Subsection H of 19.15.17.13 NMAC

☐ Re-vegetation Plan - based upon the appropriate requirements of Subsection I of 19.15.17.13 NMAC

☐ Site Reclamation Plan - based upon the appropriate requirements of Subsection G of 19.15.17.13 NMAC

17.

Siting Criteria (regarding on-site closure methods only): 19.15.17.10 NMAC

Instructions: Each siting criteria requires a demonstration of compliance in the closure plan. Recommendations of acceptable source material are provided below. Requests regarding changes to certain siting criteria may require administrative approval from the appropriate district office or may be considered an exception which must be submitted to the Santa Fe Environmental Bureau office for consideration of approval. Justifications and/or demonstrations of equivalency are required. Please refer to 19.15.17.10 NMAC for guidance.

Ground water is less than 50 feet below the bottom of the buried waste.

- NM Office of the State Engineer - iWATERS database search; USGS; Data obtained from nearby wells

☐ Yes ☐ No

☐ NA

Ground water is between 50 and 100 feet below the bottom of the buried waste

- NM Office of the State Engineer - iWATERS database search; USGS; Data obtained from nearby wells

☐ Yes ☐ No

☐ NA

Ground water is more than 100 feet below the bottom of the buried waste.

- NM Office of the State Engineer - iWATERS database search; USGS; Data obtained from nearby wells

☐ Yes ☐ No

☐ NA

Within 300 feet of a continuously flowing watercourse, or 200 feet of any other significant watercourse or lakebed, sinkhole, or playa lake (measured from the ordinary high-water mark).

- Topographic map, Visual inspection (certification) of the proposed site

☐ Yes ☐ No

Within 300 feet from a permanent residence, school, hospital, institution, or church in existence at the time of initial application.

- Visual inspection (certification) of the proposed site, Aerial photo; Satellite image

☐ Yes ☐ No

Within 500 horizontal feet of a private, domestic fresh water well or spring that less than five households use for domestic or stock watering purposes, or within 1000 horizontal feet of any other fresh water well or spring, in existence at the time of initial application

- NM Office of the State Engineer - iWATERS database, Visual inspection (certification) of the proposed site

☐ Yes ☐ No

Within incorporated municipal boundaries or within a defined municipal fresh water well field covered under a municipal ordinance adopted pursuant to NMSA 1978, Section 3-27-3, as amended

- Written confirmation or verification from the municipality; Written approval obtained from the municipality

☐ Yes ☐ No

Within 500 feet of a wetland

- US Fish and Wildlife Wetland Identification map; Topographic map; Visual inspection (certification) of the proposed site

☐ Yes ☐ No

Within the area overlying a subsurface mine

- Written confirmation or verification or map from the NM EMNRD-Mining and Mineral Division

☐ Yes ☐ No

Within an unstable area

- Engineering measures incorporated into the design, NM Bureau of Geology & Mineral Resources; USGS, NM Geological Society, Topographic map

☐ Yes ☐ No

Within a 100-year floodplain

- FEMA map

☐ Yes ☐ No

18.

On-Site Closure Plan Checklist: (19.15.17.13 NMAC) **Instructions:** Each of the following items must be attached to the closure plan. Please indicate, by a check mark in the box, that the documents are attached.

☐ Siting Criteria Compliance Demonstrations - based upon the appropriate requirements of 19.15.17.10 NMAC

☐ Proof of Surface Owner Notice - based upon the appropriate requirements of Subsection F of 19.15.17.13 NMAC

☐ Construction/Design Plan of Burial Trench (if applicable) based upon the appropriate requirements of 19.15.17.11 NMAC

☐ Construction/Design Plan of Temporary Pit (for in-place burial of a drying pad) - based upon the appropriate requirements of 19.15.17.11 NMAC

☐ Protocols and Procedures - based upon the appropriate requirements of 19.15.17.13 NMAC

☐ Confirmation Sampling Plan (if applicable) - based upon the appropriate requirements of Subsection F of 19.15.17.13 NMAC

☐ Waste Material Sampling Plan - based upon the appropriate requirements of Subsection F of 19.15.17.13 NMAC

☐ Disposal Facility Name and Permit Number (for liquids, drilling fluids and drill cuttings or in case on-site closure standards cannot be achieved)

☐ Soil Cover Design - based upon the appropriate requirements of Subsection H of 19.15.17.13 NMAC

☐ Re-vegetation Plan - based upon the appropriate requirements of Subsection I of 19.15.17.13 NMAC

☐ Site Reclamation Plan - based upon the appropriate requirements of Subsection G of 19.15.17.13 NMAC

19

Operator Application Certification:

I hereby certify that the information submitted with this application is true, accurate and complete to the best of my knowledge and belief.

Name (Print): Deborah K Powell

Title: Engineering Tech Supervisor

Signature

Deborah K Powell

Date:

9-3-08

e-mail address: DebbyP@McElvain.com

Telephone: 303-893-0933

20

OCD Approval: ☒ Permit Application (including closure plan) ☒ Closure Plan (only) ☒ OCD Conditions (see attachment)

OCD Representative Signature:

Jonathan W. Kelly

Approval Date:

4/25/2012

Title:

Compliance Officer

OCD Permit Number:

21

Closure Report (required within 60 days of closure completion): Subsection K of 19.15 17.13 NMAC

Instructions: Operators are required to obtain an approved closure plan prior to implementing any closure activities and submitting the closure report. The closure report is required to be submitted to the division within 60 days of the completion of the closure activities. Please do not complete this section of the form until an approved closure plan has been obtained and the closure activities have been completed.

☐ Closure Completion Date: _____

22

Closure Method:

☐ Waste Excavation and Removal ☐ On-Site Closure Method ☐ Alternative Closure Method ☐ Waste Removal (Closed-loop systems only)
☐ If different from approved plan, please explain

23.

Closure Report Regarding Waste Removal Closure For Closed-loop Systems That Utilize Above Ground Steel Tanks or Haul-off Bins Only:

Instructions: Please identify the facility or facilities for where the liquids, drilling fluids and drill cuttings were disposed. Use attachment if more than two facilities were utilized.

Disposal Facility Name: _____

Disposal Facility Permit Number: _____

Disposal Facility Name: _____

Disposal Facility Permit Number: _____

Were the closed-loop system operations and associated activities performed on or in areas that *will not* be used for future service and operations?

☐ Yes (If yes, please demonstrate compliance to the items below) ☐ No

Required for impacted areas which will not be used for future service and operations

- ☐ Site Reclamation (Photo Documentation)
☐ Soil Backfilling and Cover Installation
☐ Re-vegetation Application Rates and Seeding Technique

24.

Closure Report Attachment Checklist: *Instructions: Each of the following items must be attached to the closure report. Please indicate, by a check mark in the box, that the documents are attached.*

- ☐ Proof of Closure Notice (surface owner and division)
☐ Proof of Deed Notice (required for on-site closure)
☐ Plot Plan (for on-site closures and temporary pits)
☐ Confirmation Sampling Analytical Results (if applicable)
☐ Waste Material Sampling Analytical Results (required for on-site closure)
☐ Disposal Facility Name and Permit Number
☐ Soil Backfilling and Cover Installation
☐ Re-vegetation Application Rates and Seeding Technique
☐ Site Reclamation (Photo Documentation)

On-site Closure Location Latitude _____ Longitude _____ NAD ☐ 1927 ☐ 1983

25.

Operator Closure Certification:

I hereby certify that the information and attachments submitted with this closure report is true, accurate and complete to the best of my knowledge and belief. I also certify that the closure complies with all applicable closure requirements and conditions specified in the approved closure plan.

Name (Print): _____

Title: _____

Signature: _____

Date: _____

e-mail address: _____

Telephone: _____

District I
PO Box 1980 Hobbs, NM 88241-1980

District II
PO Drawer 00, Artesia, NM 88211-0719

District III
1000 Rio Brazos Rd Aztec, NM 87410

District IV
PO Box 2066 Santa Fe, NM 87504-2088

State of New Mexico
Energy, Minerals & Natural Resources Dept

OIL CONSERVATION DIVISION
PO Box 2088
Santa Fe, NM 87504-2088

Form O-11
Revised February 21, 1995
Instructions on back
Submit to Appropriate District Office
State Lease - 4 Copies
Fee Lease - 3 Copies

☐ AMENDED REPORT

WELL LOCATION AND ACREAGE DEDICATION PLAT

API Number		Pool Code 71599	Pool Name BASIN DAKOTA
Property Code 20969	Property Name BROWN		Well Number 2
GRID No 22044	Operator Name McELVAIN OIL & GAS PROPERTIES		Elevation 6755

10 Surface Location

UL or lot no L	Section 9	Township 32N	Range 10W	Lot 10 8	Feet from the 2100	North/South line SOUTH	Feet from the 830	East/West line WEST	County SAN JUAN
-------------------	--------------	-----------------	--------------	-------------	-----------------------	---------------------------	----------------------	------------------------	--------------------

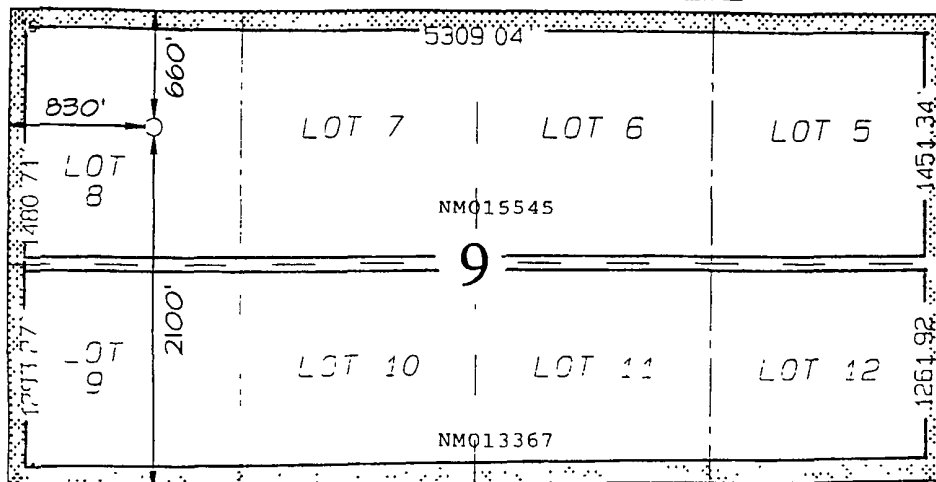
11 Bottom Hole Location If Different From Surface

UL or lot no	Section	Township	Range	Lot 10	Feet from the	North/South line	Feet from the	East/West line	County
--------------	---------	----------	-------	--------	---------------	------------------	---------------	----------------	--------

12 Dedicated Acres 334.06	13 Joint or Infill Y	14 Consolidation Code C	15 Order No
------------------------------	-------------------------	----------------------------	-------------

NO ALLOWABLE WILL BE ASSIGNED TO THIS COMPLETION UNTIL ALL INTERESTS HAVE BEEN CONSOLIDATED
OR A NON-STANDARD UNIT HAS BEEN APPROVED BY THE DIVISION

COLORADO / NEW MEXICO STATE-LINE



5303 76

17 OPERATOR CERTIFICATION

I hereby certify that the information
contained herein is true and complete
to the best of my knowledge and belief

R.E. Fielder

Signature

R.E. Fielder

Printed Name

Agent

Title

October 10, 2001

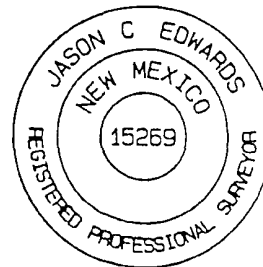
Date

18 SURVEYOR CERTIFICATION

I hereby certify that the well location
shown on this plat was plotted from the
notes of actual surveys made by me or under
my supervision and that the same is true
and correct to the best of my belief

Survey Date SEPTEMBER 14, 2001

Signature and Seal of Professional Surveyor



JASON C. EDWARDS

Certificate Number 15269

New Mexico Office of the State Engineer
POD Reports and Downloads

Township: Range: Sections:

NAD27 X: Y: Zone: Search Radius:

County: Basin: Number Suffix

Owner Name (First) (Last) ☐ Non-Domestic ☐ Domestic ☒ All

WATER COLUMN REPORT 08/15/2008

(quarters are 1=NW 2=NE 3=SW 4=SE)
 (quarters are biggest to smallest)

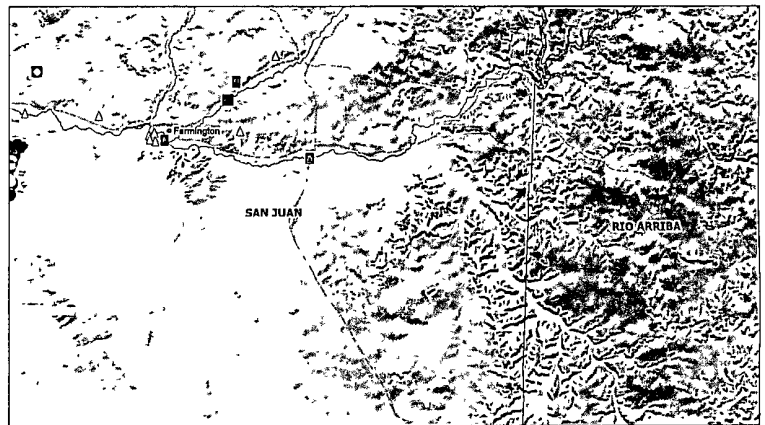
POD Number	Tws	Rng	Sec	q	q	q	Zone	X	Y	Depth Well	Depth Water	Water Column (in feet)
<u>SJ_01424</u>	32N	10W	10							164	94	70
<u>SJ_00528</u>	32N	10W	10	1	1	2				240	100	140
<u>SJ_00263</u>	32N	10W	10	3	2	2				108	50	58
<u>SJ_01177</u>	32N	10W	10	3	4					83	38	45
<u>SJ_01688</u>	32N	10W	10	4	3	3				23	6	17
<u>SJ_01153</u>	32N	10W	15	1						100	47	53
<u>SJ_03078</u>	32N	10W	15	1	2	2				21	18	3
<u>SJ_03527</u>	32N	10W	15	1	4	1				80		
<u>SJ_01290</u>	32N	10W	15	3						105	20	85
<u>SJ_02845</u>	32N	10W	15	3	2	3				11	5	6
<u>SJ_01157</u>	32N	10W	15	4	2							

Record Count: 11

San Juan Mines, Mills And Quarries Web Map

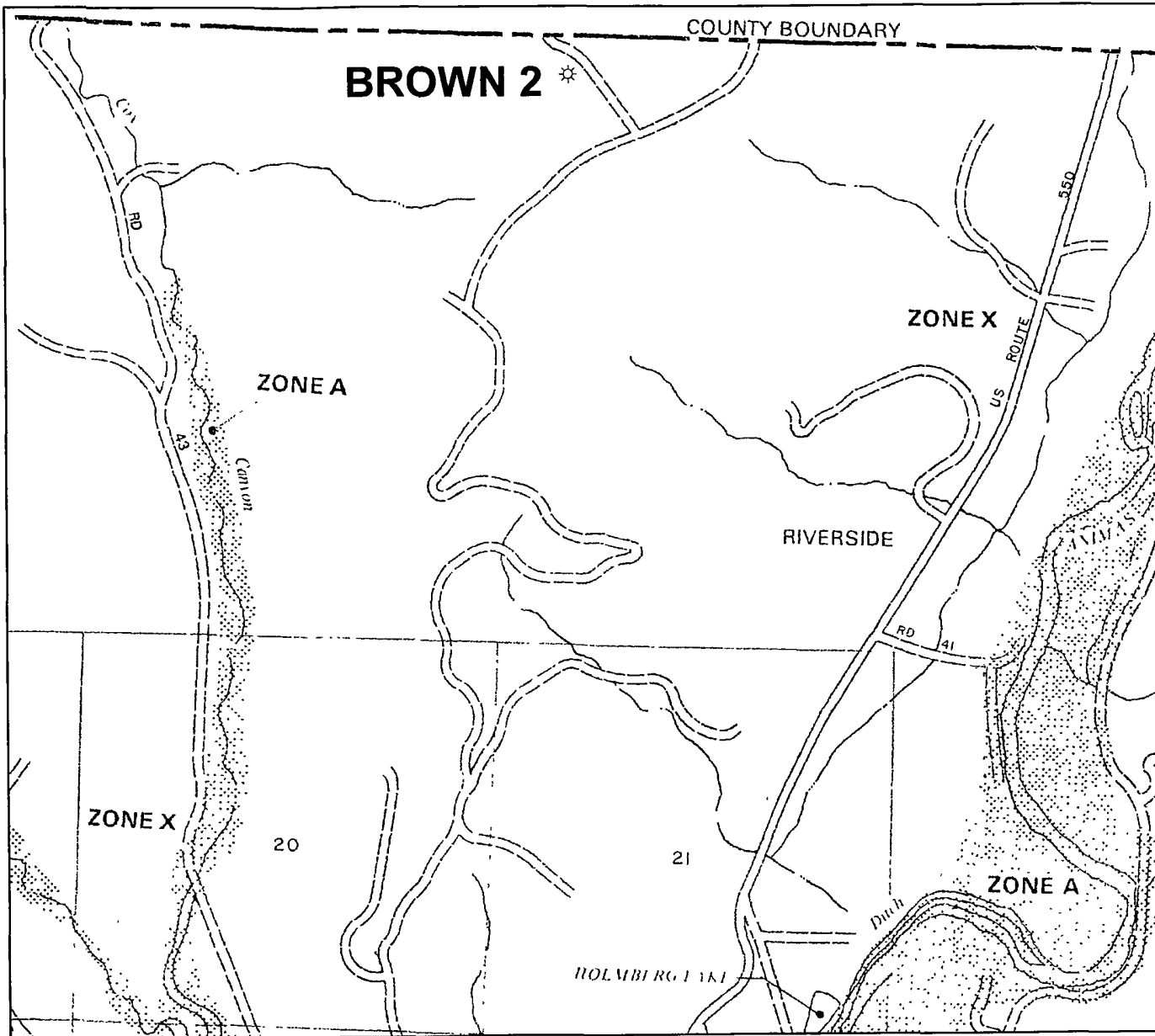
Mines, Mills & Quarries Commodity Groups

-  **Aggregate & Stone Mines**
-  **Coal Mines**
-  **Industrial Minerals Mines**
-  **Industrial Minerals Mills**
-  **Metal Mines and Mill Concentrate**
-  **Potash Mines & Refineries**
-  **Smelters & Refinery Ops.**
-  **Uranium Mines**

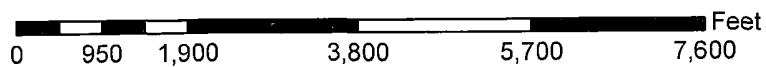


SCALE 1 : 1,065,032





1:24,000



NATIONAL FLOOD INSURANCE PROGRAM

FIRM
FLOOD INSURANCE RATE MAP

SAN JUAN COUNTY,
NEW MEXICO
UNINCORPORATED AREAS

PANEL 150 OF 1450

(SEE MAP INDEX FOR PANELS NOT PRINTED)



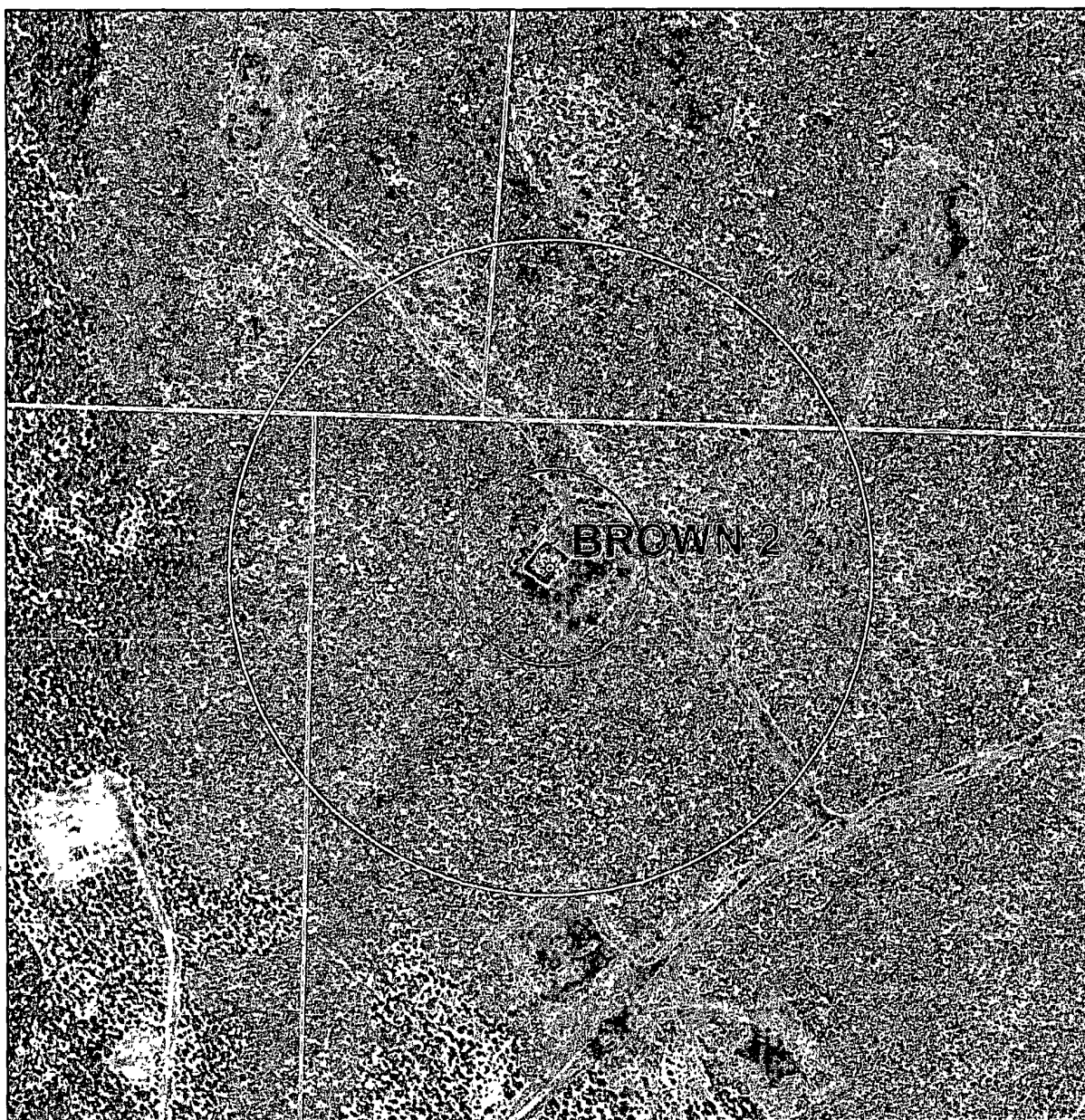
PANEL LOCATION

COMMUNITY-PANEL NUMBER
350064 0150

EFFECTIVE DATE:
AUGUST 4, 1988



Federal Emergency Management Agency



1:6,000

0 265 530 1,060 1,590 2,120 Feet

Legend



McElvain Well & 300' Radius

McElvain Well & 1000' Radius selection

Aerial Source: NM Resource Geographic Information System
Program made available by the University of New Mexico
and the State of New Mexico 2005-2006 vintage Digital
Orthophoto Quarter-Quadrangles were derived from
the New Mexico Statewide Orthophotography Project.
Source imagery flown at 35,000' above average ground.

San Juan Basin
New Mexico
Township 32N 10W
Section 9

Siting Criteria Compliance Demonstrations

The Brown #2 well is not located in an unstable area. The location is not over a mine and is not on the side of a hill. The location of the excavated pit material is not located within 300' of any continuously flowing watercourse or 200' from any other water course.

McElvain Oil & Gas Properties, Inc.
San Juan Basin
Below Grade Tank Design and Construction

In accordance with Rule 19.15.17 NMAC the following describes the as-built construction of the Below Grade Tank on the McElvain Oil & Gas Properties, Inc (MOG) Brown #2 well located in the NWSW of Sec 9, T32N, 10W.

As-built Installation:

1. The existing tank pit consists of an approximate 15 foot by 5 foot earth walled hole into which a 12 foot by 5 foot double bottom, single wall 95 bbl tank with leak detection is installed.
2. The tank walls are open for visual inspection to identify the occurrence of leaks.
3. There is an expanded metal covering on the top of the below grade tank.
4. The tank pit is surrounded by a 30ft X 30ft X 2ft berm that is contained within a 50 ft X 140 ft berm that encloses the tank battery to prevent overflow or surface water run-on.
5. A general location sign is displayed on site.
6. The pit tank is fenced with 4 foot field fence with a top rail.

McElvain Oil & Gas Properties, Inc.
San Juan Basin
Below Grade Tank Maintenance and Operating Plan

In accordance with Rule 19.15.17 NMAC the following describes the below grade tank operation and maintenance plan for the McElvain Oil & Gas Properties, Inc (MOG) on the Brown #2 well located in the NWSW of Sec 9, T32N, 10W.

General Plan:

1. MOG shall operate and maintain the below grade tank to contain liquids and solids and prevent contamination of fresh water to protect the public health and environment.
2. MOG shall not allow a below grade tank to overflow or allow surface water run-on to enter the below grade tank.
3. MOG shall continuously remove any visible or measurable layer of oil from the fluid surface of a below grade tank in an effort to prevent significant accumulation of oil over time.
4. MOG shall inspect the below grade tank monthly and maintain a written record of each inspection for five years.
5. MOG shall maintain adequate freeboard to prevent overtopping of the below grade tank.

McElvain Oil & Gas Properties, Inc.
San Juan Basin
Closure Plan

In accordance with Rule 19.15.17.1 NMAC the following procedure describes the closure plan for the McElvain Oil & Gas Properties, Inc (MOG) below grade tank on the Big Brown #2 well located in the NWSW of Sec 9, T32N, 10W.

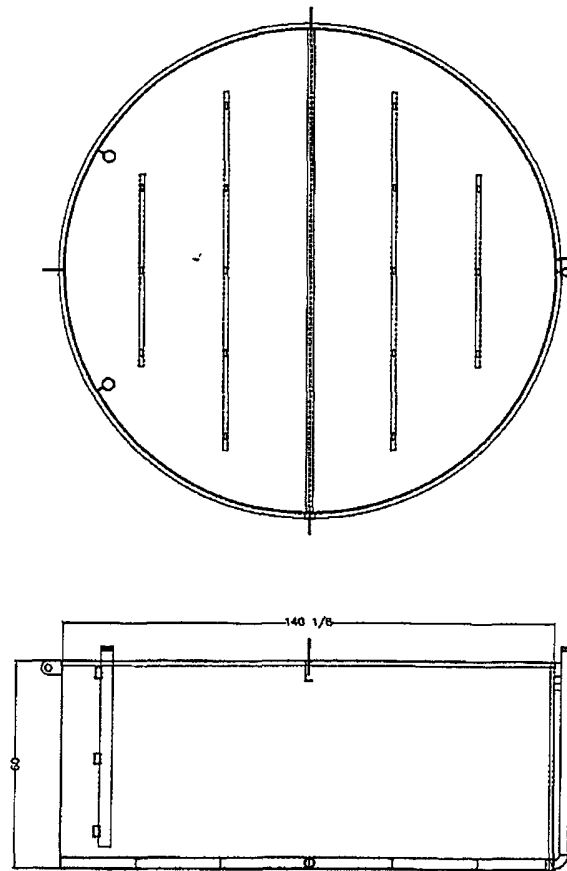
Closure Requirements:

1. MOG shall close the below grade tank within the time periods provided in 19.15.17.13 NMAC or by an earlier date that the division requires because of imminent danger to fresh water, public health, or the environment.
2. MOG shall close an existing below grade tank that does not meet the requirements of Paragraph (1) through (4) of Subsection I of 19.15.17.11 NMAC or is not included in Paragraph (5) of Subsection I of 19.15.17.11 NMAC within five years after June 16, 2008 if not retrofitted to comply with Paragraphs (1) through (4) of Subsection I of 19.15.17.11 NMAC.
3. MOG shall close a permitted below grade tank within 60 days of cessation of the below ground tank's operation or as required by the transitional provisions of Subsection B of 19.15.17.17 NMAC in accordance with a closure plan that the appropriate division district office approves. The closure report will be filed on C-144.
4. All liquids will be removed from the temporary permit prior to closure and the liquids disposed of in a division approved facility.
5. MOG shall remove the below grade tank and dispose of it in a division approved facility or recycle, reuse, or reclaim it in a manner that the appropriate division district office approves.
6. MOG will remove any on-site equipment associated with the below grade tank unless the equipment is required for some other purpose.
7. MOG shall test the soils beneath the below grade tank to determine whether a release has occurred. MOG shall collect a five point composite sample and individual grab samples from any area that is wet, discolored, or showing other evidence of a release. The samples will be analyzed for BTEX, TPH, and chlorides to demonstrate that the benzene concentration as determined by EPA SW-846 methods 8021B or 8260B or other EPA method that the division approves, does not exceed 50 mg/kg; the TPH concentration as determined by EPA method 418.1 or other EPA method that the division approves does not exceed 100 mg/kg; and the chloride concentration as determined by EPA

method 300.1 or other EPA method that the division approves does not exceed 250 mg/kg or the background concentration, whichever is greater. MOG shall notify the division of its results on form C-141.

8. If MOG or the division determines that a release has occurred, then MOG shall comply with 19.15.3.116 NMAC and 19.15.1.19 NMAC as appropriate.
9. If contamination is confirmed by field sampling. MOG will follow the Guidelines For Remediation Of Leaks, Spills, and Releases NMOC August 1993 when remediating identified contaminants.
10. If the sampling program demonstrates that a release has not occurred or that any release does not exceed the concentrations specified in Paragraph (4) of Subsection E of 19.15.17.13 NMAC, then MOG shall backfill the excavation with compacted, non-waste containing, earthen material; construct a division-prescribed soil cover; re-contour, and re-vegetate the site.
11. Notice of closure will be given to the Aztec Division office between 72 hours and one week of closure via email or verbally. The notification of closure will include the following:
 - Operator's name
 - Location by Unit Letter, Section Township, and Range.
 - Well name and API number
12. All closure activities will include proper documentation and be available for review upon request and will be submitted to OCD within 60 days of closure of the blow grade tank. The closure report will be filed on C-144 and incorporate the following:
 - Details on capping and covering where applicable
 - Inspection reports
 - Sampling results
13. The site will be re-contoured to match the surrounding area. Natural drainages will be unimpeded and erosion control will be utilized where necessary.
14. MOG shall seed the disturbed areas the first growing season with a division approved seed mixture after pit closure. Seeding will be accomplished by drilling on the contour whenever possible or by other division approved methods. Repeat seeding or planting will be continued until successful vegetative growth occurs.
15. A minimum of four feet of cover shall be achieved and the cover shall include one foot of suitable material to establish vegetation at the site, or the thickness of the topsoil native to the area , whichever is greater.

16. The surface owner shall be notified of MOG's closing of the below grade tank as per the approved closure plan using certified mail with return receipt requested.



		ALL INFORMATION CONTAINED IN THIS DRAWING, WHETHER PATENTABLE OR NON-PATENTABLE IS OF A PROPRIETARY NATURE AND IS THE SOLE PROPERTY OF PESCO, INC. REPRODUCTION OR ANY OTHER USE WITHOUT THE EXPRESSED WRITTEN CONSENT OF PESCO, INC. IS STRICTLY PROHIBITED.	
		12" X 3' 65 EBL DOUBLE BOTTOM PIT TANK	
SHEET NUMBER: 11 FILE NUMBER: 11 PROJECT NUMBER: 11 DATE: 8-11-00	SCALE: 1/16" DRAWN BY: BUCKLES CHECKED BY: 0130-D CUSTOMER:		

Brown #2

McElvain Oil & Gas Properties, Inc.

Hydrogeological Report For

Brown #2

Surface Formation:

San Jose Formation

Regional and Local Geology

The Tertiary San Jose Formation is a fluvial and alluvial deposit of Eocene age and is the youngest bedrock unit of the Tertiary in the San Juan Basin (Baltz, 1967). The San Jose is the surface formation in most of the central basin, to the eastern margin of the basin. Where it is buried, it is unconformably overlain by Quaternary sediments. It rests on an erosional surface over the Tertiary Nacimiento Formation south of the Colorado-New Mexico state line, and lies over the Cretaceous-Tertiary Animas north of the state line (Fassett, 1974). The San Jose has been differentially eroded, deeply in places, and has produced a varied to rugged physiography and a thickness range of less than 200' in the south to nearly 2700' in the eastern part of the basin (Stone et al., 1983).

The San Jose has been subdivided into four members (Baltz, 1967) for the eastern region of the basin but they are not easily discernable in this area. Instead, the San Jose exhibits a (sometimes inter-tonguing) sandy, muddy, sandy, muddy sequence in ascending order where the sandy zones are consolidated and can be considered an aquifer in some areas. The sandy zones are conglomeratic sandstone with numerous thin beds of clay, shale and mudstone. They were deposited in fluvial and alluvial environments. Overlying each of the two sandy members are sandy- to silty-mudstones containing thin lenses of poorly consolidated sandstone, claystone, and an abundance of swelling clays (Stone et al., 1983). The muddy zones act as a confinement layer over each sand zone.

Hydraulic Properties

Tertiary and Quaternary hydrologic properties, regional flow patterns and water quality do not vary significantly from unit to unit. Where pumping levels and drilling depths are economically feasible and where water quality is suitable, the San Jose, Nacimiento and Animas Formations are a source of water for public-supply, commercial, private-domestic and livestock use. Water in the San Jose, Nacimiento and Animas Formations occurs under both water table and artesian conditions. Recharge to the aquifers is from infiltration of precipitation and stream flow on outcrops, and from vertical upward leakage of water from underlying strata (Levings et al., 1990). Rates of such leakage, however, are very low except in areas of intense fracturing (Stone et al., 1983).

The sandier zones of the San Jose Formation are less interconnected in the eastern-most portion of the basin than in the area of this well; and therefore, would be more laterally extensive (fewer limited compartments). Stone et al. (1983) reported that one of the sandier zones to the east may yield 30 to 60 gallons per minute, with specific capacity of 0.23 gpm per foot of drawdown at 1 hour of pumping. The zone will yield water suitable for livestock and industrial use. Stone et al. (1983) also reported that the aquifers of Tertiary rocks yield water that is characteristically high in ions of sodium and sulfate. The removal of iron may be required.

Hydrology & Conclusion

A records search of the NM Office of the State Engineer iWaters database was conducted around the area centered on the section in which lies the Brown #2 well location, 32N 10W section 9 New Mexico. All but one water wells identified were drilled in the flood plain of the Animas River (1.5 miles to the east and 870' lower in elevation than the Brown #2) allowing shallow drilling depths and minimal depths to water. The one well drilled on the gentle portion of the slope away from the river recorded a depth to water at 100'. This well is located approximately 650' lower in elevation than the Brown #2. It can therefore be concluded that the depth to water at the Brown #2 location is well over 100'.

References

Baltz, E.H., 1967, Stratigraphy and Regional Tectonic Implications of Part of Upper Cretaceous Rocks, East-Central San Juan Basin, New Mexico, USGS Professional Paper 552, 101p.

Fassett, J.E., 1974, Cretaceous and Tertiary Rocks of the Eastern San Juan Basin, in Guidebook of Ghost Ranch, Central-Northern New Mexico, New Mexico Geological Society, 25th Field Conference, 404p.

Levings, G.W., Craig, S.D., Dam, W.L., Kernodle, J.M., and Thorn, C.R., 1990, Hydrogeology of the San Jose, Nacimiento, and Animas Formations in the San Juan Structural Basin, New Mexico, Colorado, Arizona, and Utah, USGS Hydrologic Investigations Atlas HA-720-A, 2 sheets

Scholle, P.A., 2003, Geologic Map of New Mexico 1:500,000, NM Bureau of Geology and Mineral Resources, published in cooperation with the USGS, 2 sheets.

Stone, W.J., Lyford, F.P., Frenzel, P.F., Mizell, N.H., and Padgett, E.T., 1983, Hydrogeology and water resources of San Juan Basin, New Mexico, New Mexico Bureau of Mines and Mineral Resources, Hydrologic Report 6, 70p.

BGT Closure Sampling Required by NMOCD

Components	Method	Limit
Benzene	EPA SW-846 8021B or 8260B	0.2 mg/Kg
BTEX	EPA SW-846 8021B or 8260B	50 mg/Kg
TPH	EPA SW-846 418.1	100 mg/Kg
Chlorides	EPA 300.1	250 mg/Kg