

RECEIVED

Form 3160-5
(August 2007)

UNITED STATES
DEPARTMENT OF THE INTERIOR
BUREAU OF LAND MANAGEMENT

MAY 01 2012

FORM APPROVED
OMB No 1004-0137
Expires July 31, 2010

Farmington Field Office
Bureau of Land Management

Lease Serial No. **SF-078020**

SUNDRY NOTICES AND REPORTS ON WELLS
Do not use this form for proposals to drill or to re-enter an abandoned well. Use Form 3160-3 (APD) for such proposals.

SUBMIT IN TRIPLICATE - Other instructions on page 2.

1. Type of Well

☐ Oil Well

☒ Gas Well

☐ Other

2. Name of Operator

Burlington Resources Oil & Gas Company LP

3a. Address

PO Box 4289, Farmington, NM 87499

3b. Phone No. (include area code)

(505) 326-9700

4. Location of Well (Footage, Sec., T., R., M., or Survey Description)

Unit B (NWNE), 1025' FNL & 1840' FEL, Sec. 1, T25N, R10W

7. If Unit of CA/Agreement, Name and/or No.

Huerfano Unit

8. Well Name and No.

Huerfano Unit 190

9. API Well No.

30-045-20419

10. Field and Pool or Exploratory Area

Basin Dakota

11. Country or Parish, State

San Juan, New Mexico

12. CHECK THE APPROPRIATE BOX(ES) TO INDICATE NATURE OF NOTICE, REPORT OR OTHER DATA

TYPE OF SUBMISSION

TYPE OF ACTION

☒ Notice of Intent

☐ Subsequent Report

☐ Final Abandonment Notice

☐ Acidize

☐ Alter Casing

☐ Casing Repair

☐ Change Plans

☐ Convert to Injection

☐ Deepen

☐ Fracture Treat

☐ New Construction

☒ Plug and Abandon

☐ Plug Back

☐ Production (Start/Resume)

☐ Reclamation

☐ Recomplete

☐ Temporarily Abandon

☐ Water Disposal

☐ Water Shut-Off

☐ Well Integrity

☐ Other

13. Describe Proposed or Completed Operation: Clearly state all pertinent details, including estimated starting date of any proposed work and approximate duration thereof. If the proposal is to deepen directionally or recompleat horizontally, give subsurface locations and measured and true vertical depths of all pertinent markers and zones. Attach the bond under which the work will be performed or provide the Bond No. on file with BLM/BIA. Required subsequent reports must be filed within 30 days following completion of the involved operations. If the operation results in a multiple completion or recompleat in a new interval, a Form 3160-4 must be filed once Testing has been completed. Final Abandonment Notices must be filed only after all requirements, including reclamation, have been completed and the operator has determined that the site is ready for final inspection.)

Burlington Resources requests permission to P&A the subject well per the attached procedure, current and proposed wellbore schematics.

RCVD MAY 7 '12
OIL CONS. DIV.
DIST. 3

**Notify NMOCD 24 hrs
prior to beginning
operations**

14. I hereby certify that the foregoing is true and correct. Name (Printed/Typed)

Crystal Tafoya

Staff Regulatory Technician

Title

Signature

Crystal Tafoya

Date

5/1/2012

THIS SPACE FOR FEDERAL OR STATE OFFICE USE

Approved by

Original Signed: Stephen Mason

Title

Date

MAY 03 2012

Conditions of approval, if any, are attached. Approval of this notice does not warrant or certify that the applicant holds legal or equitable title to those rights in the subject lease which would entitle the applicant to conduct operations thereon.

Office

Title 18 U.S.C. Section 1001 and Title 43 U.S.C. Section 1212, make it a crime for any person knowingly and willfully to make to any department or agency of the United States any false, fictitious or fraudulent statements or representations as to any matter within its jurisdiction.

(Instruction on page 2)

NMOCD

ABANDONMENT PROCEDURE

January 12, 2011

Huerfano 190 (DK)

Basin Dakota
1025' FNL & 1840' FEL, Spot B, Section 01 -T 025N - R 010W
San Juan County, New Mexico / API 3004520419
Lat 36° 26' 4.56" N/ Long 107° 50' 39.588" W

Note: All cement volumes use 100% excess outside pipe and 50' excess inside. The stabilizing wellbore fluid will be 8.3 ppg, sufficient to balance all exposed formation pressures. All cement will be Class B, mixed at 15.6 ppg with a 1.18 cf/sx yield.

1. This project requires a NMOCD C-144 CLEZ Closed-Loop System Permit for the use of an A-Plus steel tank to handle waste fluids circulated from the well and cement wash up.
2. Install and test location rig anchors. Comply with all NMOCD, BLM, and Operator safety regulations. MOL and RU daylight pulling unit. Conduct safety meeting for all personnel on location. Record casing, tubing and bradenhead pressures. NU relief line and blow down well. Kill well with water as necessary and at least pump tubing capacity of water down the tubing. ND wellhead and NU BOP. Function test BOP.

3. Rods: Yes X, No , Unknown .
Tubing: Yes X, No , Unknown Size , Length 6731'.
Packer: Yes X, No , Unknown Type Baker model R-3.

If this well has rods or a packer, then modify the work sequence in step #2 as appropriate.

TOH and visually inspect tubing.

4. **Plug #1 (Dakota Perforations: 6592' – 6492'):** RIH and set 4 ½" CIBP at 6592'. Run gauge ring and **RUN CBL log!** Load casing with water and circulate well clean. Pressure test tubing to 1000#. If casing does not test, then spot or tag subsequent plugs as appropriate. Mix 12 sxs of Class B cement to cover Dakota perforations. TOH and LD tubing.
5. **Plug #2 (Gallup formation: 5665' - 5765'):** Perforate 3 squeeze holes at 5765'. TIN and set CR at 5117'. Establish a rate into the squeeze holes. Mix 51 Class B cement, squeeze 39 sxs outside of 4 ½" casing and 12 sxs inside casing to cover Gallup top. TOH and LD tubing.
6. **Plug #3 (Mesa Verde formations: ^{3122 3022}3680-³¹²²3780'):** Perforate 3 squeeze holes at ~~3780'~~³¹²². TIH and set CR ~~3730'~~³¹²². Establish rate into the squeeze holes. Mix 51 Class B cement, squeeze 39 sxs outside of 4 ½" casing and 12 sxs inside casing to cover the Mesa Verde top. PUH.
7. **Plug #4 (Pictured Cliff and Fruitland Coal tops: 2210' - 1767'):** Mix 38 sxs Class B cement and spot a balance plug inside the casing to cover to cover PC and FC tops. TOH and LD tubing.
8. **Plug #5 (Kirtland and Ojo Alamo Tops: 1470' – 1163'):** Perforate 3 holes at 1470'. RIH and set 4-1/2" cement retainer at 1420'. Establish rate into squeeze holes. Mix 147 sxs Class B cement and squeeze 199 sxs behind the casing, and 28 sxs inside casing to cover Kirtland and Ojo Alamo top. TOH and LD tubing.

9. **Plug #6 (8-5/8" casing shoe to surface: 282' – surface):** Perforate 3 squeeze holes at 282'. Establish circulation out bradenhead with water and circulate the BH annulus clean. Mix 90 sxs Class B cement to squeeze 68 behind casing and 21 sxs inside casing. POH.
10. ND BOP and cut off wellhead below surface casing flange. Install P&A marker with cement to comply with regulations. RD, MOL and cut off anchors. Restore location per BLM stipulations.

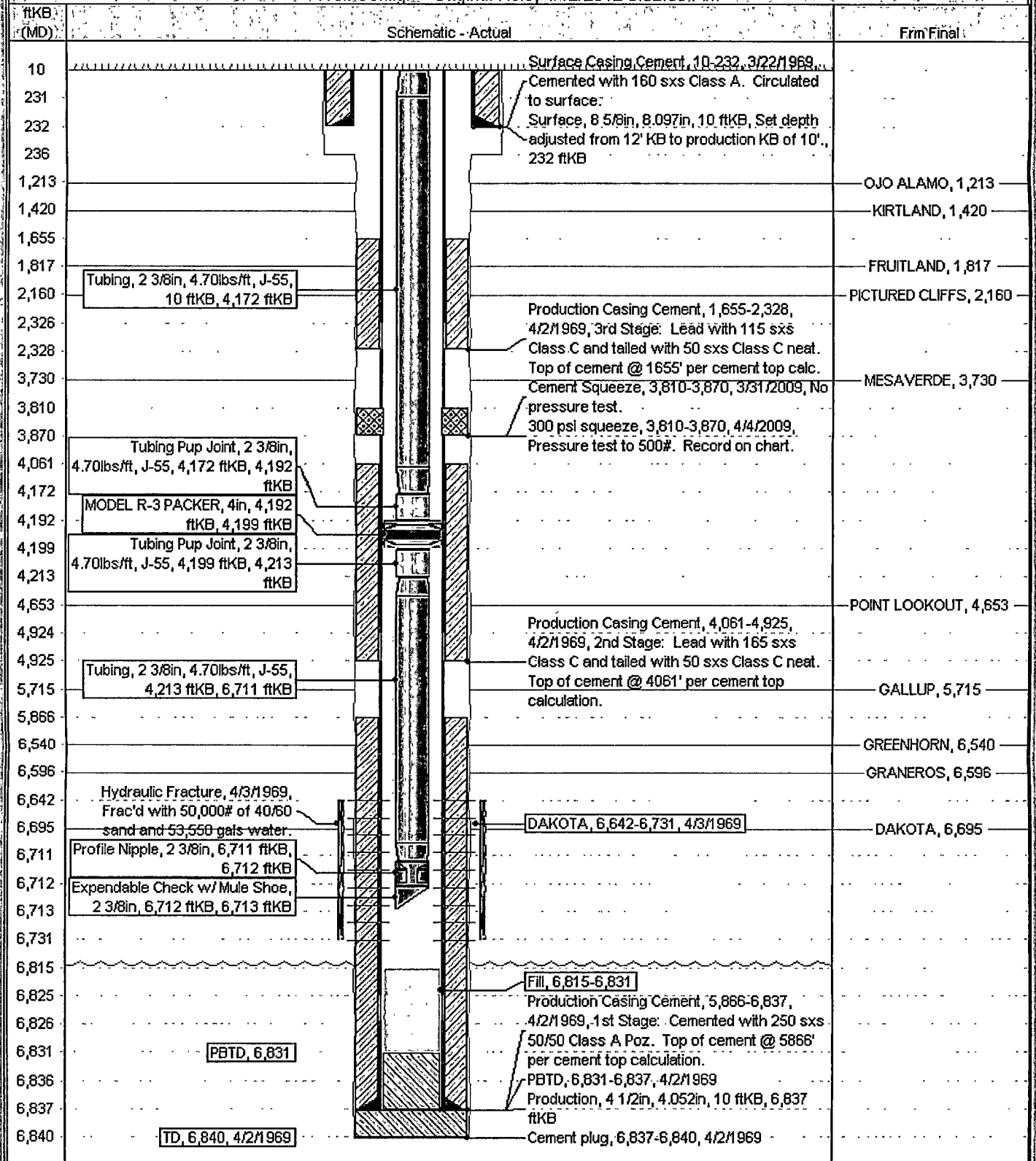
Current Schematic

ConocoPhillips

Well Name: HUERFANO UNIT #190

API/ UWI 3004520419	Surface Legal Location NMPM,001-025N-010W	Field Name DASH DAKOTA (PROPOSED CAS)	License No.	State/Province NEW MEXICO	Well Configuration Type	Edit
Gross Elevation (ft) 6,798.00	Original KB/RT Elevation (ft) 6,808.00	KB-Gross Distance (ft) 10.00	KB-Casing/Range Distance (ft)	KB-Tubing/Hanger Distance (ft)		

Well Config.: - Original Hole, 4/12/2012 8:32:00 AM



PROPOSED SCHEDULE

ConocoPhillips

Well Name: HUERFANO UNIT #190

API/ UWI	Surface Legal Location	Field Name	License No.	State/Province	Well Configuration Type	Edit
3004520419	NMPM,001-025N-010W	BASIN DAKOTA (PRODUCED GAS)		NEW MEXICO		
Ground Elevation (ft)	Original KB/RT Elevation (ft)	KB-Grind Distance (ft)	KB-Casing Flange Distance (ft)	KB-Tubing Hanger Distance (ft)		
6,798.00	6,808.00	10.00				

Well Config: - Original Hole, 1/1/2012

ftKB (MD)	Schematic - Actual	From Final
10	Surface Casing Cement, 10-232, 3/22/1969	
231	Cemented with 160 sxs Class A. Circulated to surface.	
232	Surface, 8 5/8in, 8.097in, 10 ftKB, Set depth adjusted from 12' KB to production KB of 10'.	
236		
282		
1,163		
1,213	Cement Plug #6 (P&A), 10-282, 1/1/2012, 21 sxs Class B	OJO ALAMO, 1,213
1,420	Cement Squeeze Plug #6 (P&A), 10-282, 1/1/2012, 71 sxs Class B	KIRTLAND, 1,420
1,421	Cement Retainer for (pl #5), 1,420-1,421	
1,470	Cement Plug #5 (P&A), 1,163-1,470, 1/1/2012, 99 sxs Class B	
1,655	Cement Squeeze Plug #5 (P&A), 1,163-1,470, 1/1/2012	FRUITLAND, 1,817
1,767		
1,817	Cement Plug #4 (P&A), 1,767-2,210, 1/1/2012, 12 sxs Class B	PICTURED CLIFFS, 2,160
2,160		
2,210	Production Casing Cement, 1,655-2,328, 4/2/1969, 3rd Stage: Lead with 115 sxs Class C and tailed with 50 sxs Class C neat.	
2,326	Top of cement @ 1655' per cement top calc.	
2,328	Cement Retainer for (pl #3), 3,730-3,731	MESAVERDE, 3,730
3,680	Cement Plug #3 (P&A), 3,680-3,780, 1/1/2012, 12 sxs Class B	
3,730	Cement Squeeze Plug #2 (P&A), 3,680-3,780, 1/1/2012	
3,731	Cement Squeeze, 3,810-3,870, 3/31/2009, No pressure test.	POINT LOOKOUT, 4,653
3,780	300 psi squeeze, 3,810-3,870, 4/4/2009, Pressure test to 500#. Record on chart.	
3,810	Production Casing Cement, 4,061-4,925, 4/2/1969, 2nd Stage: Lead with 165 sxs Class C and tailed with 50 sxs Class C neat.	GALLUP, 5,715
3,870	Top of cement @ 4061' per cement top calculation.	
4,061	Cement Retainer for (pl #2), 5,715-5,718	
4,653	Cement Plug #2 (P&A), 5,665-5,765, 1/1/2012, 30 sxs Class 39	GREENHORN, 6,540
4,924	Cement Squeeze Plug #2 (P&A), 5,665-5,765, 1/1/2012, 12 sxs Class B	GRANEROS, 6,596
4,925	Cement Plug #1 (P&A), 6,492-6,592, 1/1/2012, 12 sxs Class B	
5,665		
5,715		
5,718		
5,765		
5,866		
6,492		
6,540		
6,592		
6,596		
6,642		
6,677		
6,680	Hydraulic Fracture, 4/3/1969, Frac'd with 50,000# of 40/60 sand and 53,550 gals water.	DAKOTA, 6,695
6,695	DAKOTA, 6,642-6,731, 4/3/1969	
6,711		
6,712		
6,713		
6,731	Production Casing Cement, 5,866-6,837, 4/2/1969, 1st Stage: Cemented with 250 sxs 50/50 Class A Poz. Top of cement @ 5866' per cement top calculation.	
6,825	PBTD, 6,831-6,837, 4/2/1969	
6,826	Production, 4 1/2in, 4 052in, 10 ftKB, 6,837 ftKB	
6,831		
6,836		
6,837		
6,840	Cement plug, 6,837-6,840, 4/2/1969	

**UNITED STATES DEPARTMENT OF THE INTERIOR
BUREAU OF LAND MANAGEMENT
FARMINGTON DISTRICT OFFICE
6251 COLLEGE BLVD.
FARMINGTON, NEW MEXICO 87402**

Attachment to notice of
Intention to Abandon:

Re: Permanent Abandonment
Well: 190 Huerfano Unit

CONDITIONS OF APPROVAL

1. Plugging operations authorized are subject to the attached "General Requirements for Permanent Abandonment of Wells on Federal and Indian Lease."
2. Farmington Office is to be notified at least 24 hours before the plugging operations commence (505) 564-7750.
3. The following modifications to your plugging program are to be made:
 - a) Place the Mesaverde plug from 3122' – 3022' inside and outside the 4 ½" casing.

You are also required to place cement excesses per 4.2 and 4.4 of the attached General Requirements.

Office Hours: 7:45 a.m. to 4:30 p.m.