

District I
1625 N French Dr., Hobbs, NM 88240
District II
1301 W Grand Avenue, Artesia, NM 88210
District III
1000 Rio Brazos Road, Aztec, NM 87410
District IV
1220 S St Francis Dr., Santa Fe, NM 87505

State of New Mexico
Energy Minerals and Natural Resources
Department
Oil Conservation Division
1220 South St. Francis Dr.
Santa Fe, NM 87505

Form C-144
July 21, 2008

For temporary pits, closed-loop systems, and below-grade tanks, submit to the appropriate NMOCD District Office.
For permanent pits and exceptions submit to the Santa Fe Environmental Bureau office and provide a copy to the appropriate NMOCD District Office.

4757

**Pit, Closed-Loop System, Below-Grade Tank, or
Proposed Alternative Method Permit or Closure Plan Application**

- Type of action: ☒ Permit of a pit, closed-loop system, below-grade tank, or proposed alternative method
☐ Closure of a pit, closed-loop system, below-grade tank, or proposed alternative method
☐ Modification to an existing permit
☐ Closure plan only submitted for an existing permitted or non-permitted pit, closed-loop system, below-grade tank, or proposed alternative method

Instructions: Please submit one application (Form C-144) per individual pit, closed-loop system, below-grade tank or alternative request

Please be advised that approval of this request does not relieve the operator of liability should operations result in pollution of surface water, ground water or the environment. Nor does approval relieve the operator of its responsibility to comply with any other applicable governmental authority's rules, regulations or ordinances.

1.
Operator: EnerVest Operating, LLC OGRID #: 143199
Address: 1001 Fannin St. Ste 800 Houston, Texas 77002
Facility or well name: Jicarilla Apache Tribal 151 #2
API Number: 30-039-20087 OCD Permit Number: _____
U/L or Qtr/Qtr A Section 10 Township 26N Range 05W County: Rio Arriba
Center of Proposed Design: Latitude 36.505631 Longitude -107.340972 NAD: ☐ 1927 ☒ 1983
Surface Owner: ☐ Federal ☐ State ☐ Private ☒ Tribal Trust or Indian Allotment

2.
☐ **Pit:** Subsection F or G of 19.15.17.11 NMAC
Temporary: ☐ Drilling ☐ Workover
☐ Permanent ☐ Emergency ☐ Cavitation ☐ P&A
☐ Lined ☐ Unlined Liner type: Thickness _____ mil ☐ LLDPE ☐ HDPE ☐ PVC ☐ Other _____
☐ String-Reinforced
Liner Seams: ☐ Welded ☐ Factory ☐ Other _____ Volume: _____ bbl Dimensions: L _____ x W _____ x D _____



3.
☐ **Closed-loop System:** Subsection H of 19.15.17.11 NMAC
Type of Operation: ☐ P&A ☐ Drilling a new well ☐ Workover or Drilling (Applies to activities which require prior approval of a permit or notice of intent)
☐ Drying Pad ☐ Above Ground Steel Tanks ☐ Haul-off Bins ☐ Other _____
☐ Lined ☐ Unlined Liner type: Thickness _____ mil ☐ LLDPE ☐ HDPE ☐ PVC ☐ Other _____
Liner Seams: ☐ Welded ☐ Factory ☐ Other _____

4.
☒ **Below-grade tank:** Subsection I of 19.15.17.11 NMAC
Volume: 95 bbl Type of fluid: Primarily produced water w/ compressor skid precipitation & incidental lubricating oil
Tank Construction material: Steel w/ expanded metal cover
☐ Secondary containment with leak detection ☐ Visible sidewalls, liner, 6-inch lift and automatic overflow shut-off
☐ Visible sidewalls and liner ☐ Visible sidewalls only ☒ Other _____ electronic monitoring _____
Liner type: Thickness _____ mil ☐ HDPE ☐ PVC ☐ Other _____

5.
☐ **Alternative Method:**
Submittal of an exception request is required. Exceptions must be submitted to the Santa Fe Environmental Bureau office for consideration of approval.

6.
Fencing: Subsection D of 19.15.17.11 NMAC (*Applies to permanent pits, temporary pits, and below-grade tanks*)
☐ Chain link, six feet in height, two strands of barbed wire at top (*Required if located within 1000 feet of a permanent residence, school, hospital, institution or church*)
☐ Four foot height, four strands of barbed wire evenly spaced between one and four feet
☒ Alternate. Please specify 42" Hog-wire fence with 2 strands barbed-wire on top

7.
Netting: Subsection E of 19.15.17.11 NMAC (*Applies to permanent pits and permanent open top tanks*)
☒ Screen ☐ Netting ☐ Other _____
☐ Monthly inspections (If netting or screening is not physically feasible)

8.
Signs: Subsection C of 19.15.17.11 NMAC
☐ 12"x 24", 2" lettering, providing Operator's name, site location, and emergency telephone numbers
☒ Signed in compliance with 19.15.3.103 NMAC

9.
Administrative Approvals and Exceptions:
Justifications and/or demonstrations of equivalency are required. Please refer to 19.15.17 NMAC for guidance.
Please check a box if one or more of the following is requested, if not leave blank:
☒ Administrative approval(s): Requests must be submitted to the appropriate division district or the Santa Fe Environmental Bureau office for consideration of approval.
☐ Exception(s): Requests must be submitted to the Santa Fe Environmental Bureau office for consideration of approval.

10.
Siting Criteria (regarding permitting): 19.15.17.10 NMAC
Instructions: *The applicant must demonstrate compliance for each siting criteria below in the application. Recommendations of acceptable source material are provided below. Requests regarding changes to certain siting criteria may require administrative approval from the appropriate district office or may be considered an exception which must be submitted to the Santa Fe Environmental Bureau office for consideration of approval. Applicant must attach justification for request. Please refer to 19.15.17.10 NMAC for guidance. Siting criteria does not apply to drying pads or above-grade tanks associated with a closed-loop system.*

Ground water is less than 50 feet below the bottom of the temporary pit, permanent pit, or below-grade tank. - NM Office of the State Engineer - iWATERS database search; USGS; Data obtained from nearby wells	<input type="checkbox"/> Yes <input checked="" type="checkbox"/> No
Within 300 feet of a continuously flowing watercourse, or 200 feet of any other significant watercourse or lakebed, sinkhole, or playa lake (measured from the ordinary high-water mark). - Topographic map; Visual inspection (certification) of the proposed site	<input type="checkbox"/> Yes <input checked="" type="checkbox"/> No
Within 300 feet from a permanent residence, school, hospital, institution, or church in existence at the time of initial application. (<i>Applies to temporary, emergency, or cavitation pits and below-grade tanks</i>) - Visual inspection (certification) of the proposed site; Aerial photo; Satellite image	<input type="checkbox"/> Yes <input checked="" type="checkbox"/> No <input type="checkbox"/> NA
Within 1000 feet from a permanent residence, school, hospital, institution, or church in existence at the time of initial application. (<i>Applies to permanent pits</i>) - Visual inspection (certification) of the proposed site; Aerial photo; Satellite image	<input type="checkbox"/> Yes <input checked="" type="checkbox"/> No <input type="checkbox"/> NA
Within 500 horizontal feet of a private, domestic fresh water well or spring that less than five households use for domestic or stock watering purposes, or within 1000 horizontal feet of any other fresh water well or spring, in existence at the time of initial application. - NM Office of the State Engineer - iWATERS database search; Visual inspection (certification) of the proposed site	<input type="checkbox"/> Yes <input checked="" type="checkbox"/> No
Within incorporated municipal boundaries or within a defined municipal fresh water well field covered under a municipal ordinance adopted pursuant to NMSA 1978, Section 3-27-3, as amended. - Written confirmation or verification from the municipality; Written approval obtained from the municipality	<input type="checkbox"/> Yes <input checked="" type="checkbox"/> No
Within 500 feet of a wetland. - US Fish and Wildlife Wetland Identification map; Topographic map; Visual inspection (certification) of the proposed site	<input type="checkbox"/> Yes <input checked="" type="checkbox"/> No
Within the area overlying a subsurface mine. - Written confirmation or verification or map from the NM EMNRD-Mining and Mineral Division	<input type="checkbox"/> Yes <input checked="" type="checkbox"/> No
Within an unstable area. - Engineering measures incorporated into the design; NM Bureau of Geology & Mineral Resources; USGS; NM Geological Society; Topographic map	<input type="checkbox"/> Yes <input checked="" type="checkbox"/> No
Within a 100-year floodplain. - FEMA map	<input type="checkbox"/> Yes <input checked="" type="checkbox"/> No

11.

Temporary Pits, Emergency Pits, and Below-grade Tanks Permit Application Attachment Checklist: Subsection B of 19.15.17.9 NMAC**Instructions:** Each of the following items must be attached to the application. Please indicate, by a check mark in the box, that the documents are attached.

- ☒ Hydrogeologic Report (Below-grade Tanks) - based upon the requirements of Paragraph (4) of Subsection B of 19.15.17.9 NMAC
- ☐ Hydrogeologic Data (Temporary and Emergency Pits) - based upon the requirements of Paragraph (2) of Subsection B of 19.15.17.9 NMAC
- ☒ Siting Criteria Compliance Demonstrations - based upon the appropriate requirements of 19.15.17.10 NMAC
- ☒ Design Plan - based upon the appropriate requirements of 19.15.17.11 NMAC
- ☒ Operating and Maintenance Plan - based upon the appropriate requirements of 19.15.17.12 NMAC
- ☒ Closure Plan (Please complete Boxes 14 through 18, if applicable) - based upon the appropriate requirements of Subsection C of 19.15.17.9 NMAC and 19.15.17.13 NMAC

☐ Previously Approved Design (attach copy of design) API Number: _____ or Permit Number: _____

12.

Closed-loop Systems Permit Application Attachment Checklist: Subsection B of 19.15.17.9 NMAC**Instructions:** Each of the following items must be attached to the application. Please indicate, by a check mark in the box, that the documents are attached.

- ☐ Geologic and Hydrogeologic Data (only for on-site closure) - based upon the requirements of Paragraph (3) of Subsection B of 19.15.17.9
- ☐ Siting Criteria Compliance Demonstrations (only for on-site closure) - based upon the appropriate requirements of 19.15.17.10 NMAC
- ☐ Design Plan - based upon the appropriate requirements of 19.15.17.11 NMAC
- ☐ Operating and Maintenance Plan - based upon the appropriate requirements of 19.15.17.12 NMAC
- ☐ Closure Plan (Please complete Boxes 14 through 18, if applicable) - based upon the appropriate requirements of Subsection C of 19.15.17.9 NMAC and 19.15.17.13 NMAC

☐ Previously Approved Design (attach copy of design) API Number: _____

☐ Previously Approved Operating and Maintenance Plan API Number: _____ (Applies only to closed-loop system that use above ground steel tanks or haul-off bins and propose to implement waste removal for closure)

13.

Permanent Pits Permit Application Checklist: Subsection B of 19.15.17.9 NMAC**Instructions:** Each of the following items must be attached to the application. Please indicate, by a check mark in the box, that the documents are attached.

- ☐ Hydrogeologic Report - based upon the requirements of Paragraph (1) of Subsection B of 19.15.17.9 NMAC
- ☐ Siting Criteria Compliance Demonstrations - based upon the appropriate requirements of 19.15.17.10 NMAC
- ☐ Climatological Factors Assessment
- ☐ Certified Engineering Design Plans - based upon the appropriate requirements of 19.15.17.11 NMAC
- ☐ Dike Protection and Structural Integrity Design - based upon the appropriate requirements of 19.15.17.11 NMAC
- ☐ Leak Detection Design - based upon the appropriate requirements of 19.15.17.11 NMAC
- ☐ Liner Specifications and Compatibility Assessment - based upon the appropriate requirements of 19.15.17.11 NMAC
- ☐ Quality Control/Quality Assurance Construction and Installation Plan
- ☐ Operating and Maintenance Plan - based upon the appropriate requirements of 19.15.17.12 NMAC
- ☐ Freeboard and Overtopping Prevention Plan - based upon the appropriate requirements of 19.15.17.11 NMAC
- ☐ Nuisance or Hazardous Odors, including H₂S, Prevention Plan
- ☐ Emergency Response Plan
- ☐ Oil Field Waste Stream Characterization
- ☐ Monitoring and Inspection Plan
- ☐ Erosion Control Plan
- ☐ Closure Plan - based upon the appropriate requirements of Subsection C of 19.15.17.9 NMAC and 19.15.17.13 NMAC

14.

Proposed Closure: 19.15.17.13 NMAC**Instructions:** Please complete the applicable boxes, Boxes 14 through 18, in regards to the proposed closure plan.

Type: ☐ Drilling ☐ Workover ☐ Emergency ☐ Cavitation ☐ P&A ☐ Permanent Pit ☒ Below-grade Tank ☐ Closed-loop System

☐ Alternative

Proposed Closure Method: ☒ Waste Excavation and Removal

☐ Waste Removal (Closed-loop systems only)

☐ On-site Closure Method (Only for temporary pits and closed-loop systems)

☐ In-place Burial ☐ On-site Trench Burial

☐ Alternative Closure Method (Exceptions must be submitted to the Santa Fe Environmental Bureau for consideration)

15.

Waste Excavation and Removal Closure Plan Checklist: (19.15.17.13 NMAC) **Instructions:** Each of the following items must be attached to the closure plan. Please indicate, by a check mark in the box, that the documents are attached.

- ☒ Protocols and Procedures - based upon the appropriate requirements of 19.15.17.13 NMAC
- ☒ Confirmation Sampling Plan (if applicable) - based upon the appropriate requirements of Subsection F of 19.15.17.13 NMAC
- ☒ Disposal Facility Name and Permit Number (for liquids, drilling fluids and drill cuttings)
- ☒ Soil Backfill and Cover Design Specifications - based upon the appropriate requirements of Subsection H of 19.15.17.13 NMAC
- ☒ Re-vegetation Plan - based upon the appropriate requirements of Subsection I of 19.15.17.13 NMAC
- ☒ Site Reclamation Plan - based upon the appropriate requirements of Subsection G of 19.15.17.13 NMAC

16. **Waste Removal Closure For Closed-loop Systems That Utilize Above Ground Steel Tanks or Haul-off Bins Only:** (19.15.17.13.D NMAC)
Instructions: Please identify the facility or facilities for the disposal of liquids, drilling fluids and drill cuttings. Use attachment if more than two facilities are required.

Disposal Facility Name: _____ Disposal Facility Permit Number: _____
Disposal Facility Name: _____ Disposal Facility Permit Number: _____

Will any of the proposed closed-loop system operations and associated activities occur on or in areas that *will not* be used for future service and operations?
☐ Yes (If yes, please provide the information below) ☐ No

Required for impacted areas which will not be used for future service and operations.

☐ Soil Backfill and Cover Design Specifications - based upon the appropriate requirements of Subsection H of 19.15.17.13 NMAC
☐ Re-vegetation Plan - based upon the appropriate requirements of Subsection I of 19.15.17.13 NMAC
☐ Site Reclamation Plan - based upon the appropriate requirements of Subsection G of 19.15.17.13 NMAC

17. **Siting Criteria (regarding on-site closure methods only):** 19.15.17.10 NMAC
Instructions: Each siting criteria requires a demonstration of compliance in the closure plan. Recommendations of acceptable source material are provided below. Requests regarding changes to certain siting criteria may require administrative approval from the appropriate district office or may be considered an exception which must be submitted to the Santa Fe Environmental Bureau office for consideration of approval. Justifications and/or demonstrations of equivalency are required. Please refer to 19.15.17.10 NMAC for guidance.

Ground water is less than 50 feet below the bottom of the buried waste. - NM Office of the State Engineer - iWATERS database search; USGS; Data obtained from nearby wells	<input type="checkbox"/> Yes <input type="checkbox"/> No <input type="checkbox"/> NA
Ground water is between 50 and 100 feet below the bottom of the buried waste - NM Office of the State Engineer - iWATERS database search; USGS; Data obtained from nearby wells	<input type="checkbox"/> Yes <input type="checkbox"/> No <input type="checkbox"/> NA
Ground water is more than 100 feet below the bottom of the buried waste. - NM Office of the State Engineer - iWATERS database search; USGS; Data obtained from nearby wells	<input type="checkbox"/> Yes <input type="checkbox"/> No <input type="checkbox"/> NA
Within 300 feet of a continuously flowing watercourse, or 200 feet of any other significant watercourse or lakebed, sinkhole, or playa lake (measured from the ordinary high-water mark). - Topographic map; Visual inspection (certification) of the proposed site	<input type="checkbox"/> Yes <input type="checkbox"/> No
Within 300 feet from a permanent residence, school, hospital, institution, or church in existence at the time of initial application. - Visual inspection (certification) of the proposed site; Aerial photo; Satellite image	<input type="checkbox"/> Yes <input type="checkbox"/> No
Within 500 horizontal feet of a private, domestic fresh water well or spring that less than five households use for domestic or stock watering purposes, or within 1000 horizontal feet of any other fresh water well or spring, in existence at the time of initial application. - NM Office of the State Engineer - iWATERS database; Visual inspection (certification) of the proposed site	<input type="checkbox"/> Yes <input type="checkbox"/> No
Within incorporated municipal boundaries or within a defined municipal fresh water well field covered under a municipal ordinance adopted pursuant to NMSA 1978, Section 3-27-3, as amended. - Written confirmation or verification from the municipality; Written approval obtained from the municipality	<input type="checkbox"/> Yes <input type="checkbox"/> No
Within 500 feet of a wetland. - US Fish and Wildlife Wetland Identification map; Topographic map; Visual inspection (certification) of the proposed site	<input type="checkbox"/> Yes <input type="checkbox"/> No
Within the area overlying a subsurface mine. - Written confirmation or verification or map from the NM EMNRD-Mining and Mineral Division	<input type="checkbox"/> Yes <input type="checkbox"/> No
Within an unstable area. - Engineering measures incorporated into the design; NM Bureau of Geology & Mineral Resources; USGS; NM Geological Society; Topographic map	<input type="checkbox"/> Yes <input type="checkbox"/> No
Within a 100-year floodplain. - FEMA map	<input type="checkbox"/> Yes <input type="checkbox"/> No

18. **On-Site Closure Plan Checklist:** (19.15.17.13 NMAC) **Instructions:** Each of the following items must be attached to the closure plan. Please indicate, by a check mark in the box, that the documents are attached.

☐ Siting Criteria Compliance Demonstrations - based upon the appropriate requirements of 19.15.17.10 NMAC
☐ Proof of Surface Owner Notice - based upon the appropriate requirements of Subsection F of 19.15.17.13 NMAC
☐ Construction/Design Plan of Burial Trench (if applicable) based upon the appropriate requirements of 19.15.17.11 NMAC
☐ Construction/Design Plan of Temporary Pit (for in-place burial of a drying pad) - based upon the appropriate requirements of 19.15.17.11 NMAC
☐ Protocols and Procedures - based upon the appropriate requirements of 19.15.17.13 NMAC
☐ Confirmation Sampling Plan (if applicable) - based upon the appropriate requirements of Subsection F of 19.15.17.13 NMAC
☐ Waste Material Sampling Plan - based upon the appropriate requirements of Subsection F of 19.15.17.13 NMAC
☐ Disposal Facility Name and Permit Number (for liquids, drilling fluids and drill cuttings or in case on-site closure standards cannot be achieved)
☐ Soil Cover Design - based upon the appropriate requirements of Subsection H of 19.15.17.13 NMAC
☐ Re-vegetation Plan - based upon the appropriate requirements of Subsection I of 19.15.17.13 NMAC
☐ Site Reclamation Plan - based upon the appropriate requirements of Subsection G of 19.15.17.13 NMAC

19.

Operator Application Certification:

I hereby certify that the information submitted with this application is true, accurate and complete to the best of my knowledge and belief.

Name (Print): Ronnie L. Young Title: Compliance Supervisor

Signature: Ronnie L. Young Date: 1.12.10

e-mail address: ryoung@enervest.net Telephone: 713-495-6530

20.

OCD Approval: ☒ Permit Application (including closure plan) ☒ Closure Plan (only) ☐ OCD Conditions (see attachment)

OCD Representative Signature: Jonathan Kelly Approval Date: 5/16/2012

Title: Deputy Oil & Gas Inspector, District #3 OCD Permit Number: _____

21.

Closure Report (required within 60 days of closure completion): Subsection K of 19.15.17.13 NMAC

Instructions: Operators are required to obtain an approved closure plan prior to implementing any closure activities and submitting the closure report. The closure report is required to be submitted to the division within 60 days of the completion of the closure activities. Please do not complete this section of the form until an approved closure plan has been obtained and the closure activities have been completed.

☐ Closure Completion Date: _____

22.

Closure Method:

☐ Waste Excavation and Removal ☐ On-Site Closure Method ☐ Alternative Closure Method ☐ Waste Removal (Closed-loop systems only)
☐ If different from approved plan, please explain.

23.

Closure Report Regarding Waste Removal Closure For Closed-loop Systems That Utilize Above Ground Steel Tanks or Haul-off Bins Only:

Instructions: Please identify the facility or facilities for where the liquids, drilling fluids and drill cuttings were disposed. Use attachment if more than two facilities were utilized.

Disposal Facility Name: _____ Disposal Facility Permit Number: _____

Disposal Facility Name: _____ Disposal Facility Permit Number: _____

Were the closed-loop system operations and associated activities performed on or in areas that *will not* be used for future service and operations?

☐ Yes (If yes, please demonstrate compliance to the items below) ☐ No

Required for impacted areas which will not be used for future service and operations:

- ☐ Site Reclamation (Photo Documentation)
☐ Soil Backfilling and Cover Installation
☐ Re-vegetation Application Rates and Seeding Technique

24.

Closure Report Attachment Checklist: Instructions: Each of the following items must be attached to the closure report. Please indicate, by a check mark in the box, that the documents are attached.

- ☐ Proof of Closure Notice (surface owner and division)
☐ Proof of Deed Notice (required for on-site closure)
☐ Plot Plan (for on-site closures and temporary pits)
☐ Confirmation Sampling Analytical Results (if applicable)
☐ Waste Material Sampling Analytical Results (required for on-site closure)
☐ Disposal Facility Name and Permit Number
☐ Soil Backfilling and Cover Installation
☐ Re-vegetation Application Rates and Seeding Technique
☐ Site Reclamation (Photo Documentation)

On-site Closure Location: Latitude _____ Longitude _____ NAD: ☐ 1927 ☐ 1983

25.

Operator Closure Certification:

I hereby certify that the information and attachments submitted with this closure report is true, accurate and complete to the best of my knowledge and belief. I also certify that the closure complies with all applicable closure requirements and conditions specified in the approved closure plan.

Name (Print): _____ Title: _____

Signature: _____ Date: _____

e-mail address: _____ Telephone: _____

Attachment to Form C-144
Below-grade Tank Permit Application

Introduction:

EnerVest Operating, LLC (EV) is submitting this permit application to operate an existing below-grade tank under the authority of 19.15.17 NMAC. The tank is not currently permitted; therefore this document serves as supporting documentation referenced in the attached Form C-144. EV operates coal bed methane production sites in San Juan County, New Mexico. The below-grade tank at this location is used to collect precipitation and residual lubrication oil from the engine skid drain system and produced water from the primary and secondary separators. Produced water from the secondary separator may have small quantities of entrained lubricating oil from the compressor cylinder. In general, emulsified lubricating oil makes up a small percentage of the overall contents of the below-grade tank.

This application is being submitted for the following well site:

Well Name: Jicarilla Apache Tribal 151 #2
API No: 30-039-20087
Location: UL A, Sec 10, 26N, 05W

The supporting documentation contained in this C-144 attachment is organized as follows:

Section I – Sitting Criteria Compliance Demonstration
Section II – Design Plan
Section III – Operating and Maintenance Plan
Section IV – Closure Plan
Section V – Hydrogeology Report

Appendices:

01 – USGS 7.5 Minute Topo Map
02 – Groundwater (water well search)
03 – Aerial Photo
04 – Municipal Boundary Map
05 – U.S. Fish & Wildlife Wetland Identification Map
06 – FEMA 100-year Floodplain map
07 – Mine Map
08 – C-102 Location Plat, Facility Inspection Sheet, Below-Grade Tank Diagram
09 – Karst Map for unstable areas

References

Section I

Sitting Criteria Compliance Demonstration

Jicarilla Apache Tribal 151 #2

API No. 30-039-20087

Sitting Criteria Compliance Demonstration

Criteria as per 19.15.17.10.(A) (1)	In Compliance	Comments
Ground water less than 50' below bottom of tank	Yes	Refer to "Site Hydrology Report" in Section V
Within 300' of continuously flowing watercourse or 200 feet of other significant watercourse, lakebed, sinkhole, or playa lake (measured from ordinary high-water mark)	Yes	Refer to Observed Setting Requirements completed by field personnel in Appendix 08
Within 300 feet of a permanent residence, school, hospital, institution, or church	Yes	Refer to Observed Setting Requirements completed by field personnel in Appendix 08
Within 500 ft of a private, domestic freshwater well or spring or within 1000 ft of freshwater well or spring in existence at time of application	Yes	Refer to Observed Setting Requirements completed by field personnel in Appendix 08
Within incorporated municipal boundary of defined municipal fresh water field	Yes	Refer to Observed Setting Requirements completed by field personnel in Appendix 08
Within 500 feet of a wetland	Yes	Refer to Observed Setting Requirements completed by field personnel in Appendix 08 and USF&W Map in Appendix 5
Within the area overlying a subsurface mine.	Yes	Refer to Observed Setting Requirements completed by field personnel in Appendix 08
Within an unstable area	Yes	Refer to Observed Setting Requirements completed by field personnel in Appendix 08 and Karst Map in Appendix 09
Within a 100-year floodplain	Yes	Refer to Observed Setting Requirements completed by field personnel in Appendix 08 and FEMA Map in Appendix 06

Section II

Design & Construction Plan

EnerVest Operating, LLC (EV)

**BELOW-GRADE TANK
DESIGN AND CONSTRUCTION SPECIFICATIONS**

Rule 19.15.17.11

- C. Enervest Operating is the official operator of record for all wells which have below-grade tanks to be addressed in this specification. All below-grade tanks are located on these leases and will be in full compliance with 19.15.16.8 regarding signage.
- D. EV will ensure a fence shall be constructed and maintained in good repair with gates that are closed and locked when responsible personnel are not on site. EV shall insure that all gates are closed and locked when responsible personnel are not on-site.

If the below-grade tank is located within 1,000 feet of a permanent residence, school, hospital, institution or church, the fence shall be a chain link security fence at least 6 feet in height with at least two strands of barbed wire on top.

If the below-grade tank is not within 1,000 feet of the above mentioned structures, the fence shall constructed to exclude livestock with at least four strands of barbed wire evenly spaced between one foot from the ground and four foot above the ground.

EV is requesting administrative approval to use a 42" Hog wire fence with 2 strands barbed-wire on top in lieu of the required four strand barbed wire fence. This will be supported with iron posting at the corners and 10 – 12 feet apart. EV believes this will offer better protection for wildlife in these tank areas.

- E. EV shall ensure an open top tank is screened with expanded 3/16" metal screen or a fully closed top, both of which are welded on the top of the tank. Such screening will be painted to blend with the below-grade tank. EV believes this is sufficient strength to protect migratory birds or other wildlife.
- I. EV will ensure all below-grade tanks will be constructed of 3/16" steel, resistant to the tank's contents and to damage from sunlight. Based on water production and road condition for access during the winter months there are a choice of three different sizes which could be used:

CAPACITY DIAMETER HEIGHT

125 bbl	15'	4'
120 bbl	12'	6'
100 bbl	12'	5'

This tank will contain liquids and should prevent contamination of fresh water to protect the public health and environment.

The below-grade system will include a excavated area for the tanks which will be dependent upon the size of the tank used:

- 18' x 18' x 4' High Square excavated area
- 18' Diameter x 4' High Circular excavated area
- 18' Diameter x 5' High Circular excavated area

Most of our below-grade tank systems were installed prior to June 16, 2008 and are 16.5' x 16.5' x 4' square excavated area design. As tanks are retro fitted, this will be changed to one of the above. The particular area and well conditions will determine which design best for that particular well. EV will ensure that there will be room to walk around the tank inside the containment area which will better enable our field personnel to inspect for damage to liners or incidental leaks. Please refer to tank diagram under Appendix 8 for details.

All excavated areas will be reinforced with metal walls to prevent collapse. There will be sufficient open area on all sides of the tank to witness any incidental release that may occur. Please refer to tank diagram under Appendix 8.

EV will ensure the base of any excavated area containing a below-grade tank will be level and free of rocks, debris, sharp edges or irregularities to prevent punctures, cracks or indentations of the liner or tank bottom.

EV will ensure that any geomembrane liner used shall consist of 30-mil flexible PVC or 60-mil HDPE liner or equivalent liner material. The liner shall be composed of an impervious, synthetic material that is resistant to petroleum hydrocarbons, salt and acidic and alkaline solutions and shall be resistant to ultraviolet light. The liner shall have a hydraulic conductivity no greater than 1×10^{-9} cm/sec. The liner shall be compatible with EPA SW-846 method 9090A. EV will install the liner in such a manner as to divert any possible leak for visual inspection. EV will demonstrate to the OCD that the liner complies with the specifications within Subparagraph (a) of Paragraph (4) of Section I of 19.156.17.11 NMAC and obtain approval from the division prior to the installation of the new design.

EV will ensure the fluid levels of tanks will be monitored by automatic high level alarms at 24" from the top and shut-off devise at 10 1/2 inches from the top of the tank. The tanks will be also equipped with a manual shut-off valve in the event it is needed. Please see design specification sheet of this system in this section. The majority of our below-grade tanks are within the berm around our tank battery and as so are protected from run-on water. Those outside this berm will be protected with an earthen berm which will extend at least 6" above surface ground level to divert run-on around the tank. The side walls of the excavated

area will extend at least 6" above the ground level to divert run-on water around the tank. Any possible leak will be diverted, on the liner, in such a way can be visually inspected.

EV tank design will be a single walled tank constructed to ensure that the side walls are open for visual inspection for leaks; the bottom will be elevated six inches above the ground surface and will contain a geomembrane liner, as described above, directly on the ground level of the containment area.

Once a below-grade tank which was installed prior to June 16, 2008 does not demonstrate integrity, EV shall promptly repair or remove that below-grade tank and close the tank or install a below-grade tank that is in full compliance with Paragraph 1 thru 4 of Section I of 19.15.17.11 NMAC. EV shall comply with the operational requirements of 19.15.17.12 NMAC. Please refer to tank diagram under Appendix 8 for details

Any single walled below-grade tank installed before June 16, 2008 where any portion of the tank sidewall is below the ground surface and not totally visible shall be closed, retrofited or replaced before June 15, 2013. EV will fully comply with Paragraph 1 thru 4 of Section I of 19.15.17.11 NMAC for all retrofitting or replacement of below-grade tanks.

Table 1A - GSE HD Smooth Geomembrane

TESTED PROPERTY	TEST METHOD	FREQUENCY	MINIMUM		AVERAGE		VALUE	
			30 mil	40 mil	60 mil	80 mil	100 mil	
Thickness, (minimum average) mil (mm)	ASTM D 5199	every roll	30 (0.75)	40 (1.00)	60 (1.50)	80 (2.00)	100 (2.50)	
Lowest individual reading (-10%)			27 (0.69)	36 (0.91)	54 (1.40)	72 (1.80)	90 (2.30)	
Density, g/cm ³	ASTM D 1505	200,000 lb	0.94	0.94	0.94	0.94	0.94	
Tensile Properties (each direction)	ASTM D 6693, Type IV Dumbell, 2 ipm	20,000 lb						
Strength at Break, lb/in-width (N/mm)			120 (21)	152 (26)	243 (42)	327 (57)	410 (71)	
Strength at Yield, lb/in-width (N/mm)			66 (11)	84 (14)	132 (23)	177 (30)	212 (37)	
Elongation at Break, %			700	700	700	700	700	
Elongation at Yield, %			13	13	13	13	13	
	G.L. 2.0 in (51 mm)							
	G.L. 1.3 in (33 mm)							
Tear Resistance, lb (N)	ASTM D 1004	45,000 lb	21 (93)	28 (124)	42 (186)	58 (257)	73 (324)	
Puncture Resistance, lb (N)	ASTM D 4833	45,000 lb	65 (289)	85 (378)	125 (556)	160 (711)	195 (867)	
Carbon Black Content, % (Range)	ASTM D 1 603*/421 8	20,000 lb	2.0 - 3.0	2.0 - 3.0	2.0 - 3.0	2.0 - 3.0	2.0 - 3.0	
Carbon Black Dispersion	ASTM D 5596	45,000 lb	Note ⁽¹⁾	Note ⁽¹⁾	Note ⁽¹⁾	Note ⁽¹⁾	Note ⁽¹⁾	
Notched Constant Tensile Load, hr	ASTM D 5397, Appendix	200,000 lb	1000	1000	1000	1000	1000	
Oxidative Induction Time, min	ASTM D 3895, 200°C; O ₂ , 1 atm	200,000 lb	>140	>140	>140	>140	>140	
TYPICAL ROLL DIMENSIONS								
Roll Length ⁽²⁾ , ft (m)			1,120 (341)	870 (265)	560 (171)	430 (131)	340 (104)	
Roll Width ⁽²⁾ , ft (m)			22.5 (6.9)	22.5 (6.9)	22.5 (6.9)	22.5 (6.9)	22.5 (6.9)	
Roll Area, ft ² (m ²)			25,200 (2,341)	19,575 (1,819)	12,600 (1,171)	9,675 (899)	7,650 (711)	

NOTES:

- * ⁽¹⁾Dispersion only applies to near spherical agglomerates. 9 of 10 views shall be Category 1 or 2. No more than 1 view from Category 3.
- * ⁽²⁾Roll lengths and widths have a tolerance of ± 1%.
- GSE HD is available in rolls weighing approximately 3,900 lb (1,769 kg).
- All GSE geomembranes have dimensional stability of ±2% when tested according to ASTM D 1204 and LTB of <-77° C when tested according to ASTM D 746
- *Modified.

O.R.E. SYSTEMS
P.O. Box 3677
Farmington, NM 87499
(505) 327-2161

Section III

Operation & Maintenance Plan

EnerVest Operating, LLC (EV)

**BELOW-GRADE TANK
OPERATIONAL REQUIREMENTS**

Rule 19.15.17.12

- A. EV will operate and maintain Below-Grade Tanks to insure the integrity of the below-grade tank, liner, liner system or berms to prevent contamination of fresh water and protect public health and the environment.

EV will not discharge or store any hazardous waste material of any kind in any Below-Grade Tank.

Any penetration of the below-grade below the liquid's surface that may occur, EV shall remove all liquid above the damage or leak line within 48 hours of the discovery. EV shall notify the appropriate district office within 48 hours of the discovery and repair the damage or replace the liner or below-grade tank.

EV will insure the metal retaining walls of the below-grade system around each tank will extend at least 6" above ground level or be equipped with a 6" earthen berm in an effort to divert run-on water around the below-grade system.

- D. EV will insure that a below-grade tank constructed and installed prior to June 16, 2008 that does not meet the requirements of 19.15.17.11 NMAC and does not demonstrate integrity or that the below-grade tank develops any conditions as identified in 19.15.17.12 NMAC shall close the existing below-grade tank pursuant to the closure requirements of 19.15.17.13 NMAC and install a below-grade tank that is in full compliance with our approved design. Please see below-grade system diagram in Appendix 8 for details.

EV will insure all Below-grade tanks will be equipped with automatic high-level alarm which sounds at 24" and than shut off devise to insure that flow will shut off at the freeboard height of 10 1/2 inches.

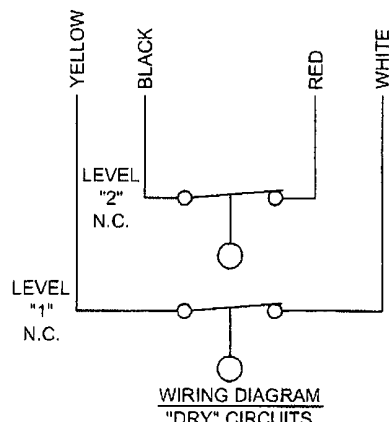
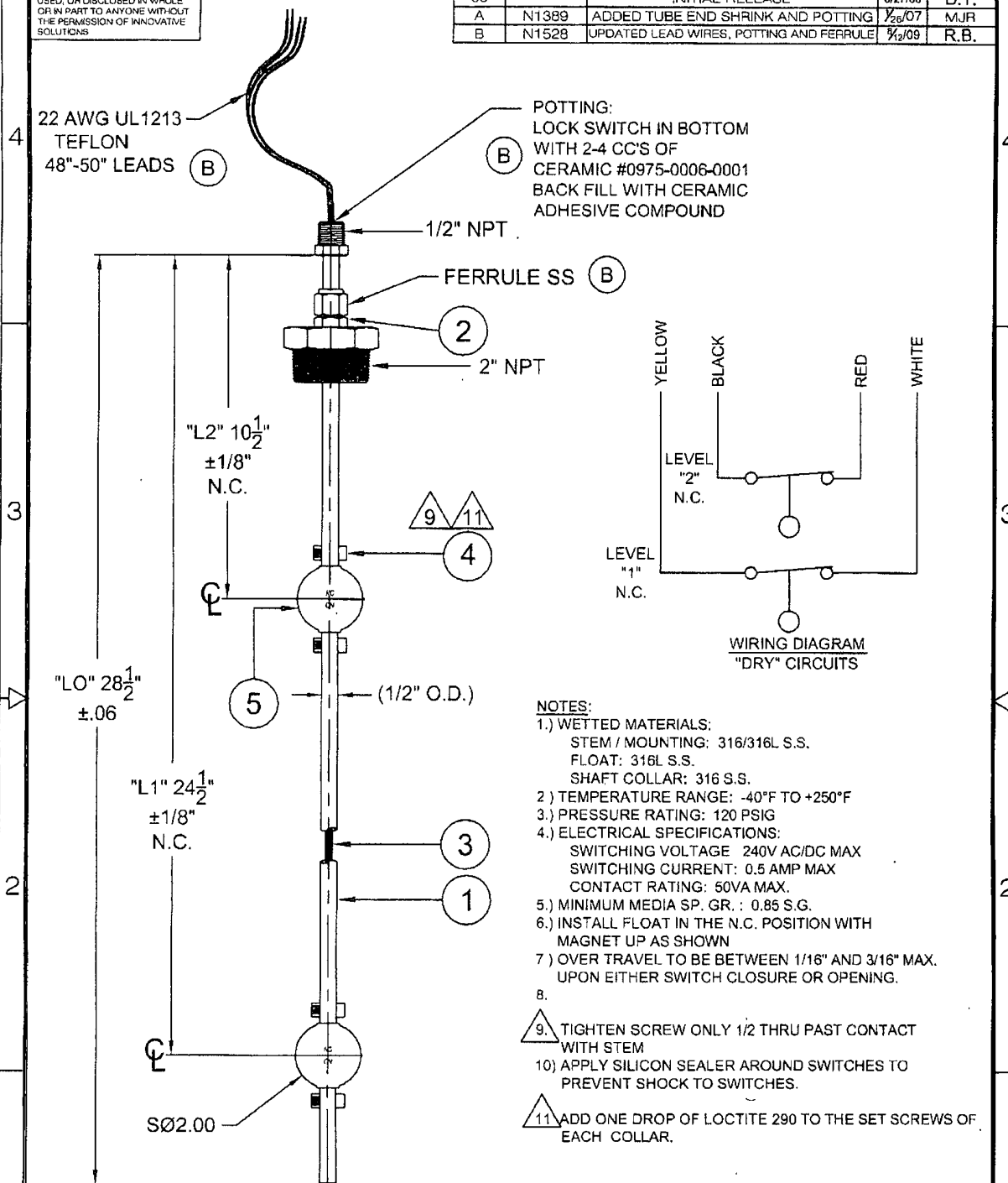
The majority of our below-grade tanks are within the berm around our tank battery and as so are protected from run-on water. Those outside this berm will be protected with an earthen berm which will extend at least 6" above surface ground level to divert run-on around the tank.

EV will remove any visible or measurable layer of oil from the fluid surface of a below-grade tank.

With any below-grade tank, installed before June 16, 2008, that is retrofitted or replaced with another tank, EV will insure that the soil beneath the removed soil is inspected for wet, discolored, or any other evidence of release, with photographic evidence. EV will report the results of all testing to the division on form C-141 and demonstrate to the division whether the evidence of contamination indicates an imminent threat to fresh water, public health, safety or the environment exists. If the division determines that the contamination does not pose an imminent threat to fresh water, public health, safety or the environment, EV shall complete the retrofit or the replacement of the below-grade tank as per our approved design program as indicated in Appendix 8. If EV or the division determines that the contamination poses an imminent threat to fresh water, public health, safety or the environment, then EV shall close the existing below-grade tank pursuant to the closure requirements of 19.17.15.13 NMAC prior to initiating the retrofit or replacement.

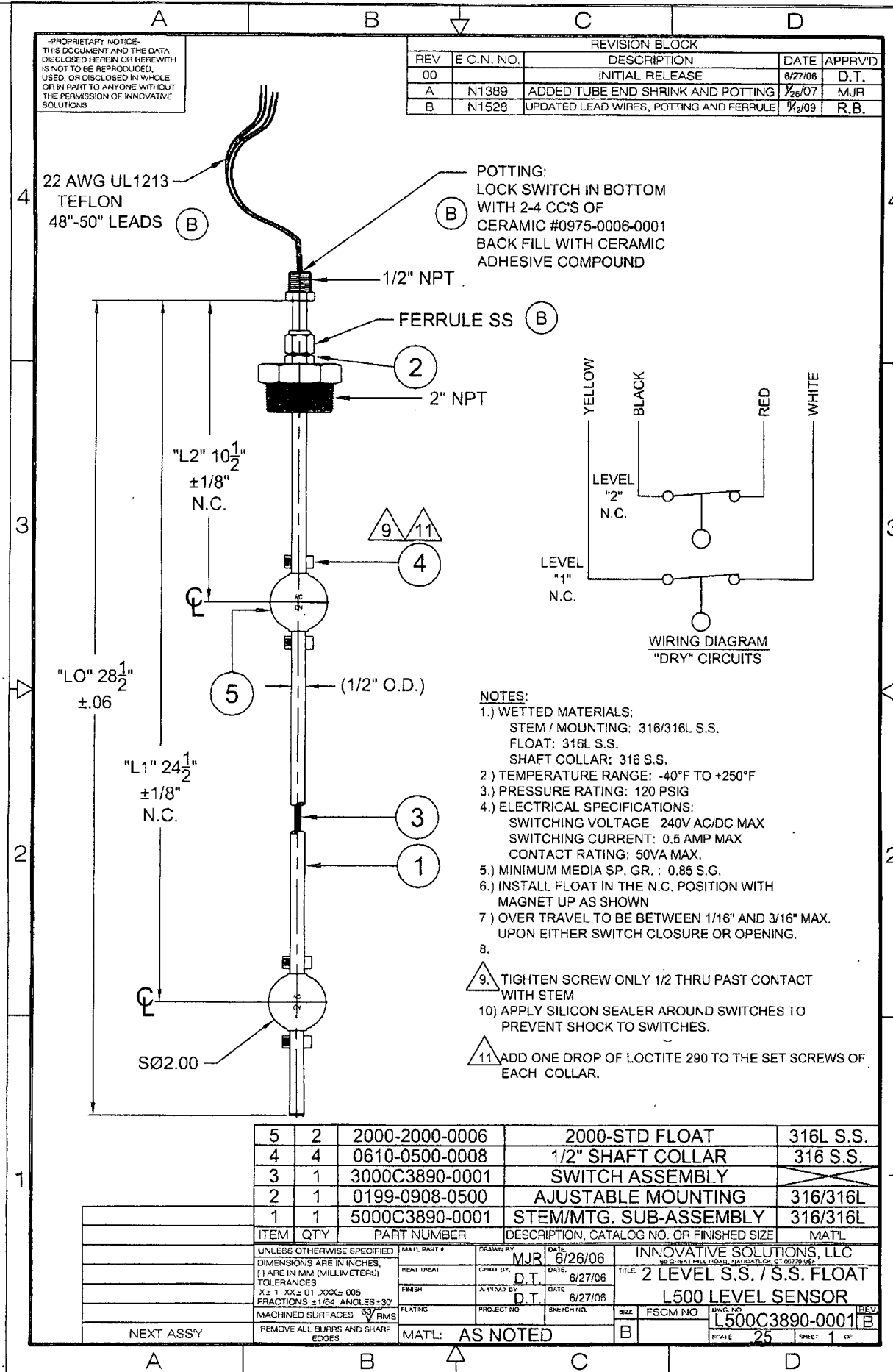
PROPRIETARY NOTICE
THIS DOCUMENT AND THE DATA
DISCLOSED HEREIN OR HEREWITH
IS NOT TO BE REPRODUCED,
USED, OR DISCLOSED IN WHOLE
OR IN PART TO ANYONE WITHOUT
THE PERMISSION OF INNOVATIVE
SOLUTIONS

REVISION BLOCK				
REV	E.C.N. NO.	DESCRIPTION	DATE	APPR'D
00		INITIAL RELEASE	6/27/06	D.T.
A	N1389	ADDED TUBE END SHRINK AND POTTING	7/26/07	MJR
B	N1528	UPDATED LEAD WIRES, POTTING AND FERRULE	7/2/08	R.B.



- NOTES:
- 1.) WETTED MATERIALS:
STEM / MOUNTING: 316/316L S.S.
FLOAT: 316L S.S.
SHAFT COLLAR: 316 S.S.
 - 2.) TEMPERATURE RANGE: -40°F TO +250°F
 - 3.) PRESSURE RATING: 120 PSIG
 - 4.) ELECTRICAL SPECIFICATIONS:
SWITCHING VOLTAGE: 240V AC/DC MAX
SWITCHING CURRENT: 0.5 AMP MAX
CONTACT RATING: 50VA MAX.
 - 5.) MINIMUM MEDIA SP. GR.: 0.85 S.G.
 - 6.) INSTALL FLOAT IN THE N.C. POSITION WITH MAGNET UP AS SHOWN
 - 7.) OVER TRAVEL TO BE BETWEEN 1/16" AND 3/16" MAX. UPON EITHER SWITCH CLOSURE OR OPENING.
 - 8.
 9. TIGHTEN SCREW ONLY 1/2 THRU PAST CONTACT WITH STEM
 - 10) APPLY SILICON SEALER AROUND SWITCHES TO PREVENT SHOCK TO SWITCHES.
 - 11 ADD ONE DROP OF LOCTITE 290 TO THE SET SCREWS OF EACH COLLAR.

5	2	2000-2000-0006	2000-STD FLOAT	316L S.S.
4	4	0610-0500-0008	1/2" SHAFT COLLAR	316 S.S.
3	1	3000C3890-0001	SWITCH ASSEMBLY	
2	1	0199-0908-0500	ADJUSTABLE MOUNTING	316/316L
1	1	5000C3890-0001	STEM/MTG. SUB-ASSEMBLY	316/316L
ITEM	QTY	PART NUMBER	DESCRIPTION, CATALOG NO. OR FINISHED SIZE	MAT'L
UNLESS OTHERWISE SPECIFIED				
DIMENSIONS ARE IN INCHES.				
[] ARE IN MM (MILLIMETERS)				
TOLERANCES				
X ± 1 XX ± 01 XXX ± 005				
FRACTIONS ± 1/64 ANGLES ± 30°				
MACHINED SURFACES RMS				
REMOVE ALL BURRS AND SHARP EDGES				
NEXT ASSY				
MATERIAL: AS NOTED				
DRAWN BY: MJR DATE: 6/26/06				
CHECKED BY: D.T. DATE: 6/27/06				
APPROVED BY: D.T. DATE: 6/27/06				
PROJECT NO. SKETCH NO. SIZE: FSCM NO. DWG. NO. L500C3890-0001				
REVISION 25 SHEET 1 OF 1				



Section IV

Closure Plan

EnerVest Operating, LLC (EV)

**BELOW-GRADE TANK
CLOSURE REQUIREMENTS**

Rule 19.15.17.13

Before June 15, 2013, EV shall close, retrofit, or replace an existing below-grade tank that has not demonstrated integrity.

EV shall close a below-grade tank within the time periods provided in 19.15.17.13 NMAC, or by an earlier date that the division requires because of imminent danger to fresh water, public health or the environment.

- A. EV shall close an existing below-grade tank that does not meet the requirements of Subsection I, paragraphs (1) through (4), of 19.15.17.11 NMAC if not retrofitted to comply with said requirements prior to any sale or change of operator to 19.15.9.9 NMAC.

Any below-grade tank installed prior to June 16, 2008 that is single walled and where any portion of the tank sidewall is below the ground surface and not visible shall equip or retrofit the below-grade tank to comply with paragraphs (1) through (4) of Subsection I of 19.15.17.11 NMAC, or close it, within 5 years after June 16, 2008.

Within 60 days of cessation of the permitted below-grade tanks operation or as required by Subsection B of 19.15.17.17 NMAC, EV shall close the below-grade tank in accordance with a closure plan that the appropriate division district office approves.

- J. Prior to implementing any closure operations EV shall research county tax records to determine the name and address of the surface owner of the properties involved. EV shall notify this surface owner via Certified U.S. Mail, return receipt requested, of their intent to close said below-grade tank.

Upon determination, EV will notify the appropriate district office prior to any closure operations beginning. Such notification shall be at least 72 hours, via U.S. Mail, prior to beginning work but not more than one week prior to beginning work. Such notice shall contain at a minimum the following:

Operators Name
Unit letter, Section, Township, & Range of well
Well name and well number
API Number of well

- E. .All free standing liquids and sludge will be removed at the start of the below-grade tank closure process from the below-grade tank and disposed of in one of the below division-approved facility as indicated below:

TNT Land Farm	Permit # NM-01-0008	Liquids & Sludge
Environtech Land Farm	Permit # NM-01-0011	Solids
AguaMoss	Permit # 247130	Liquids

EV will obtain prior approval from the division to dispose, recycle, reuse, or reclaim the below-grade tanks and provide documentation of the final disposition of the below-grade tank in the closure report.

Existing liners that are removed as a result of closure will be wiped cleaned and disposed of at a solid waste facility listed below in compliance with Subparagraph (M) of Paragraph (I) of Subsection C 19.15.35.8 NMAC..

San Juan Regional Landfill	Permit # SWM 052426 or
“	Special Waster Permit # SWM052433 “sp”

If there is any on-site equipment associated with a below0grade tank, EV shall remove the equipment, unless the equipment is required for some other purpose .

Upon removal of the below-grade tank, EV will take, at a minimum, a five point composite sample from where the tank was sitting. EV shall collect individual grab samples will be taken from any area that is wet, discolored or showing other evidence of a release. All samples will be analyzed for the following:

Components	Test Method	Limits (mg/Kg)
Benzene	EPA SW-846 8021B or 8260B	0.2
BTEX	EPA SW-846 8021B or 8260B	50
TPH	EPA SW-846 418.1	100
Chlorides	EPA 300.1	250 or background, whichever is greater

EV will insure that the results of all sampling shall be reported to the division on approved form C-141. EV understands that the division may require additional delineation upon review of the results.

If sampling demonstrates that concentrations specified above have NOT been exceeded, or that a release has NOT occurred, EV will backfill the excavation with compacted, non-waste containing, earthen material, construct a division prescribed soil cover, and recontour and re-vegetate the site. The division prescribed soil cover, recontouring, and re-vegetation shall comply with 19.15.17.13.

If EV or the division determines that a release has occurred, EV shall fully comply with 19.15.29 NMAC and 19.15.30 NMAC as appropriate.

- G. Once EV has closed a below-grade tank, we shall reclaim the site to a safe and stable condition that blends with the surrounding undisturbed area. When possible, EV will restore the impacted surface area to the condition that existed prior to oil and gas operations by the placement of soil cover.

If the closed area is within the confines of the pad location EV will blend the site to match the pad location as much as possible. Such activities shall prevent erosion, protect fresh water, human health and the environment. EV will obtain written agreement from the surface owner for any alternate re-vegetation proposals and submit to the division for final approval.

- H. The soil cover design will be consistent with the requirements of 19.15.17.13(H)(1) and (3). The soil cover will consist of the background thickness of topsoil or one foot of suitable material to establish vegetation at the site, whichever is greater. The soil cover will be constructed to the site's existing grade and prevent ponding of water and erosion of the cover material.

- I. EV will seed the disturbed areas the first growing season after closing the below grade tank. Seeding will be accomplished via drilling on the contour whenever practical or by other division-approved methods. BLM or Forest Service stipulated seed mixes will be used on federal lands. Vegetative cover will equal 70% of the native perennial vegetative cover (un-impacted) consisting of at least three native plant species, including at least one grass, but not including noxious weeds, and maintain that cover through two successive growing seasons. Repeat seeding or planting will be continued until successful vegetative growth occurs. During the two growing seasons that prove viability, there shall be no artificial irrigation of the vegetation.

EV shall notify the division when it has seeded or planted and when it successfully achieves re-vegetation by U.S. Mail.

- K. Within 60 days of completion of closure operations, EV will file Form C-144, with attachments, outlining the detailed operations of the closing operations. Such attachments shall include, but not be limited to, proof of surface owner and division notifications, confirmation of sampling analysis, disposal facility names and permit numbers, soil backfilling and cover installation, re-vegetation application rates and seeding techniques, and photo documentations.

Section V

Hydrogeology Report

Regional Hydrogeology Report

The San Jose Formation of Eocene age occurs in New Mexico and Colorado, and its outcrop forms the land surface over much of the eastern half of the central San Juan Basin. It overlies the Nacimiento Formation in the area generally south of the Colorado-New Mexico state line and overlies the Animas Formation in the area generally north of the State line.

The San Jose Formation was deposited in various fluvial-type environments. In general, the unit consists of an interbedded sequence of sandstone, siltstone, and variegated shale. Thickness of the San Jose Formation generally increases from west to east, ranging from 200 feet in the west and south to almost 2,700 feet in the center of the structural basin.

Ground water is associated with alluvial and fluvial sandstone aquifers. Therefore the occurrence of ground water is mainly controlled by the distribution of sandstone in the formation. The distribution of such sandstone is the results of original depositional extend plus any post-depositional modifications, namely erosion and structural deformation.

Transmissivity data for the San Jose Formation are minimal. Values of 40 and 120 feet squared per day were determined from two aquifer tests (Stone et al, 1983. table 5). The reported or measured discharge from 46 water wells completed in San Jose Formation ranges from 0.15 to 61 gallons per minute and the median is 5 gallons per minute. Most of the wells provide water for livestock and domestic use.

The San Jose Formation is a very suitable unit for recharge from precipitation because soils that form on the unit are sandy and highly permeable and therefore readily absorb precipitation. However, low annual precipitation, relatively high transpiration and evaporation rates, and deep dissection of the San Jose Formation by the San Juan River and its tributaries all tend to reduce the effective recharge to the unit.

Stone et al., 1983, Hydrogeology and Water Resources of the San Juan Basin, New Mexico; Socorro, New Mexico Bureau of Mines and Mineral Resources Hydrologic Report 6, 70 p.

Site Specific Hydro Geologic Analysis

Jicarilla Apache Tribal 151 #2 API 30-039-20087

The above referenced well is located at UL A, Sec 10, 26N, 05W at an elevation of 7256. Surface casing was set to a depth of 420' or at a depth of 6836'.

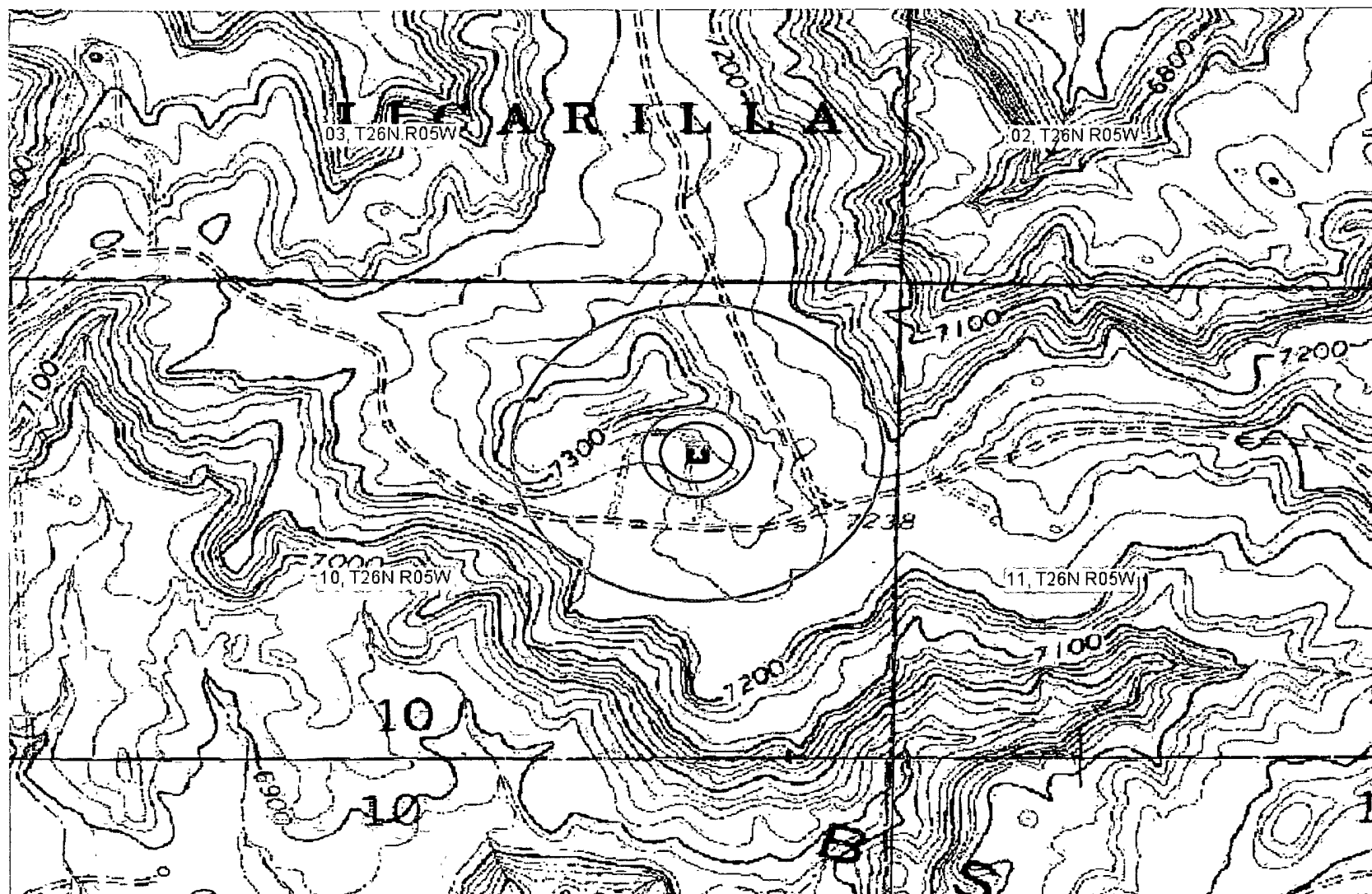
According to the Office of State Engineer, the closest water well drilled was RG 81026 about 2.5 miles North of our location. Drilled to 460 feet at an unknown elevation, it shows water encountered at 180 to 460 feet.

In 1965, Continental Oil drilled their Apache K #5 (30-039-06600) about 450 feet South of our location. It was at an elevation of 7248 with no indication of water being encountered. Surface casing was set at 215 feet which would be at 7033. This would be 197 feet below than our well.

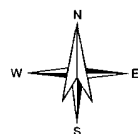
The groundwater at our well site would be greater than 150 feet at a minimum. This should allow ample protection for any groundwater in the area.

Appendix 01

U.S. 7.5 Minute TOPO Map



0 500 1000ft

Petroleum Recovery
Research Center

TOPO - Jicarilla Apache Tribal 151 #2

Figure: 01

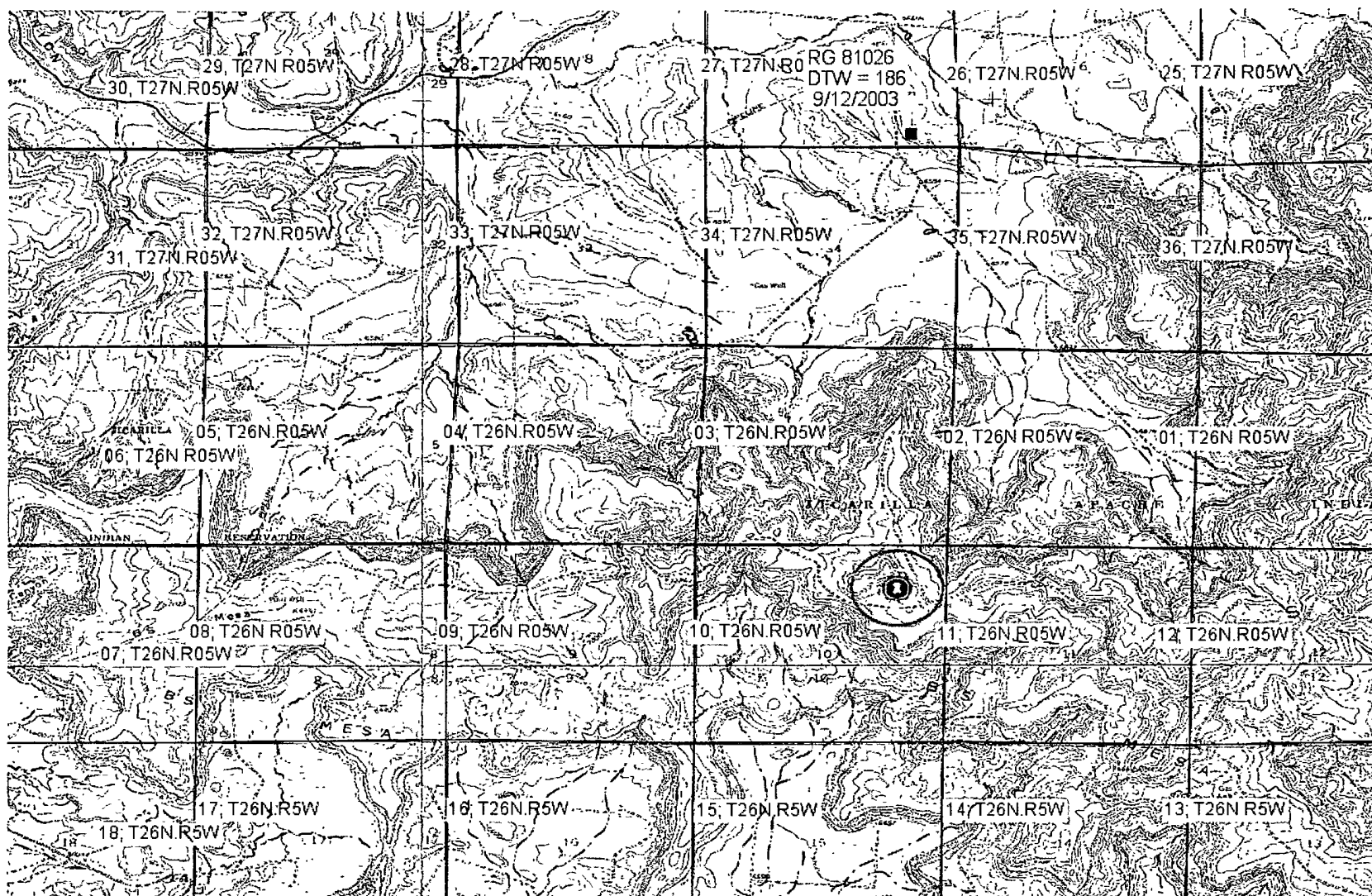
A - Sec 10, 26N, 05W

Dec 30, 2009

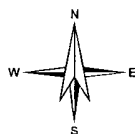
API 30-039-20087

Appendix 02

Ground Water Depth



0 2000 4000ft



Petroleum Recovery
Research Center

OSE Water Wells - Jicarilla Apache Tribal 151 #2

Figure: 02

A - Sec 10, 26N, 05W

Dec 31, 2009

API 30-039-20087



New Mexico Office of the State Engineer

Water Right Summary



WR File Number: RG 81026

Primary Purpose: STK 72-12-1 LIVESTOCK WATERING

Primary Status: PMT PERMIT

Total Acres:

Total Diversion: 3

Owner: BUREAU OF LAND MANAGEMENT

Contact: DALE WIRTH

Documents on File

Doc	File/Act	Status			Transaction Desc.	From/To	Acres	Diversion	Consumptive
		1	2	3					
72121	2003-09-02	PMT	LOG	PRC	RG 81026	T		3	

Point of Diversion

(NAD83 UTM in meters)

Pod Number	Source	Q	Q	Q	6416 4 SecTws Rng	X	Y	Other Location Desc
RG 81026	Shallow	3	4	4	27 27N 05W	290530	4046294*	LIVESTOCK WELL

An () after northing value indicates UTM location was derived from PLSS - see Help

The data is furnished by the NMOSE/ISC and is accepted by the recipient with the expressed understanding that the OSE/ISC make no warranties, expressed or implied, concerning the accuracy, completeness, reliability, usability, or suitability for any particular purpose of the data.



New Mexico Office of the State Engineer

Point of Diversion Summary

(quarters are 1=NW 2=NE 3=SW 4=SE)

(quarters are smallest to largest)

(NAD83 UTM in meters)

POD Number

Q64 Q16 Q4 Sec Tws Rng

X

Y

RG 81026

3 4 4 27 27N 05W

290530 4046294*

Driller License: SUNBELT DRILLING, LLC

Driller Name:

Source: Shallow

Drill Start Date: 09/12/2003

Drill Finish Date: 09/16/2003

Log File Date: 10/01/2003

PCW Received Date:

Pump Type:

Pipe Discharge Size:

Casing Size: 5.00

Estimated Yield: 3

Depth Well: 460 feet

Depth Water: 186 feet

Water Bearing Stratifications: Top Bottom Description

180 195 Sandstone/Gravel/Conglomerate

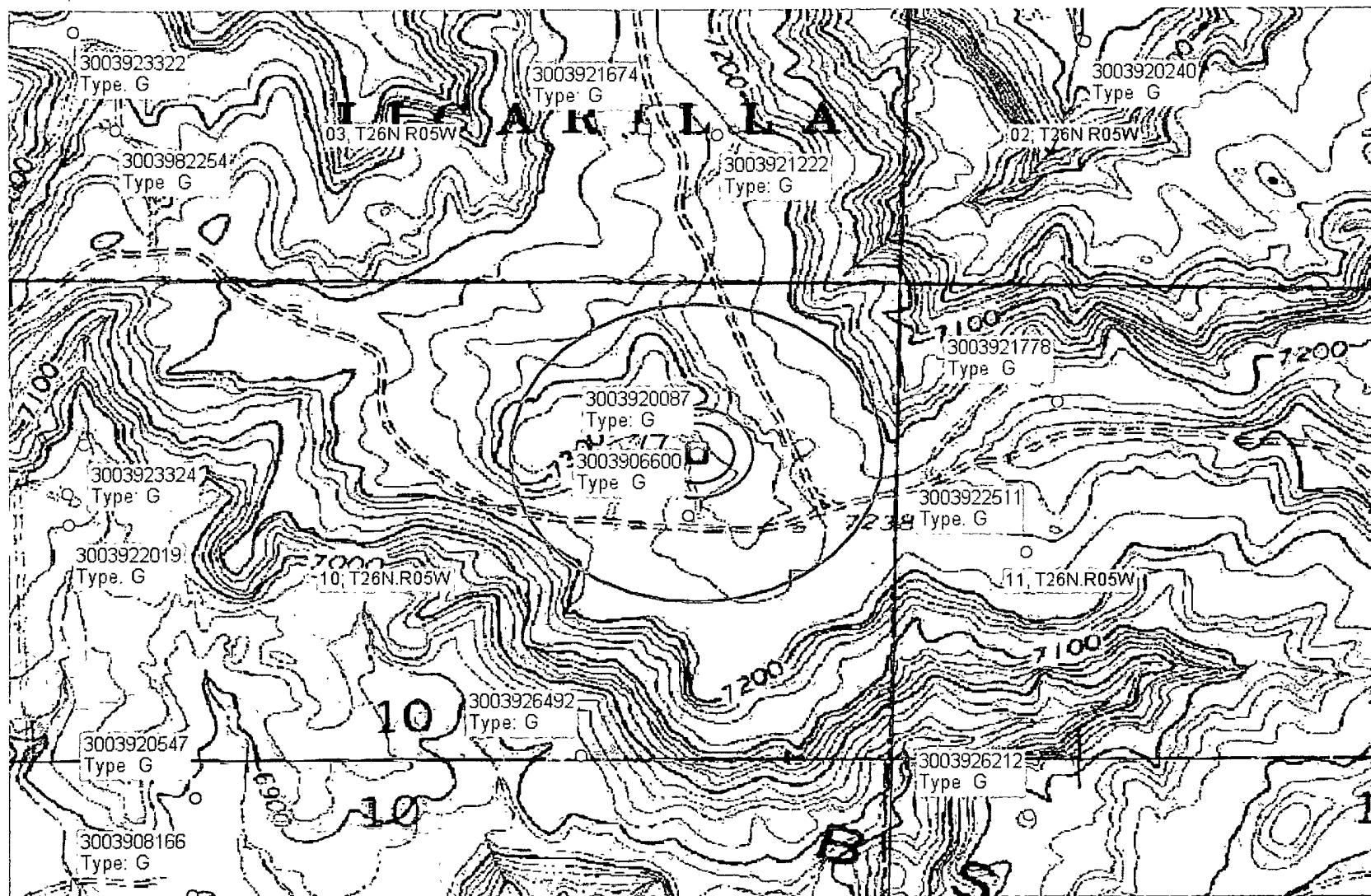
430 460 Sandstone/Gravel/Conglomerate

Casing Perforations: Top Bottom

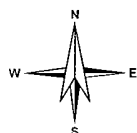
412 452

*UTM location was derived from PLSS - see Help

The data is furnished by the NMOSE/ISC and is accepted by the recipient with the expressed understanding that the OSE/ISC make no warranties, expressed or implied, concerning the accuracy, completeness, reliability, usability, or suitability for any particular purpose of the data.



0 500 1000ft



Petroleum Recovery
Research Center

Offset Gas Wells - Jicarilla Apache Tribal 151 #2

Figure: 2a

A - Sec 10, 26N, 05W

Dec 30, 2009

API 30-039-20087

UNITED STATES
DEPARTMENT OF THE INTERIOR
GEOLOGICAL SURVEYSUBMIT IN TRIPLICATE*
(Other instructions on re-
verse side)Form approved.
Budget Bureau No. 42-R1424.

5. LEASE DESIGNATION AND SERIAL NO.

151

6. IF INDIAN, ALLOTTEE OR TRIBE NAME

Jicarilla Apache

7. UNIT AGREEMENT NAME

AXI Apache "K"

8. FARM OR LEASE NAME

9. WELL NO.

5

10. FIELD AND POOL, OR WILDCAT
36. Blanco Pictured Cliffs
Blanco Mesaverde11. SEC., T., R., M., OR BLK. AND
SURVEY OR AREA

Sec. 10, T26N, R5W - N4PM

14. PERMIT NO.

15. ELEVATIONS (Show whether DF, RT, GR, etc.)

7248' GR, 7260' DF

12. COUNTY OR PARISH

Rio Arriba

13. STATE

New Mexico

16. Check Appropriate Box To Indicate Nature of Notice, Report, or Other Data

NOTICE OF INTENTION TO:

TEST WATER SHUT-OFF

FRACTURE TREAT

SHOOT OR ACIDIZE

REPAIR WELL

(Other)

PULL OR ALTER CASING

MULTIPLE COMPLETE

ABANDON*

CHANGE PLANS

SUBSEQUENT REPORT OF:

WATER SHUT-OFF

FRACTURE TREATMENT

SHOOTING OR ACIDIZING

(Other)

REPAIRING WELL

ALTERING CASING

ABANDONMENT*

Well Completion

(NOTE: Report results of multiple completion on Well
Completion or Recompletion Report and Log form.)

17. DESCRIBE PROPOSED OR COMPLETED OPERATIONS (Clearly state all pertinent details, and give pertinent dates, including estimated date of starting any proposed work. If well is directionally drilled, give subsurface locations and measured and true vertical depths for all markers and zones pertinent to this work.)*

Spudded 7/6/65. Ran 6 jts. 8 5/8" casing to 215' and cemented with 150 sacks regular. Drilled to T.D. 6250'. Ran logs. Set 4 1/2" casing at 6250' and cemented with 350 sacks cement. Point Lookout perfs 6117-29', 6070-74' and 6063-66' fraced with 30,000# sand and 29,400 gallons water with 200# "ADONITE AQUA" additive. Cliff House perfs 5576-84', 5608-18', 5626-36' and 5644-48' fraced with 50,000# sand and 44,100 gallons water with 400# "ADONITE AQUA" additive. Pictured Cliffs perfs 3939-46', 3925-29' and 3877-84' fraced with 35,000# sand, 29,800 gallons water and "ADONITE AQUA" additive. Set Model "D" production packer at 5480' RB. Ran 187 joints 2 3/8" tubing landed in packer. Mesaverde producing through tubing, Pictured Cliffs producing through casing tubing annulus. Completed 8/4/65 from above perfs. SIP Mesaverde 1110#; flowed 2870 MCVD, 3/4" choke, VP 240#. SIP Pictured Cliffs 1070#; flowed 1185 MCVD, 3/4" choke, VP 90#. Shut-in for pipeline connection; Southern Union will be the gas purchaser.

18. I hereby certify that the foregoing is true and correct

SIGNED

ORIGINAL SIGNED BY:
H. D. HALEY

TITLE

District Manager

DATE

9-23-65

(This space for Federal or State office use)

APPROVED BY

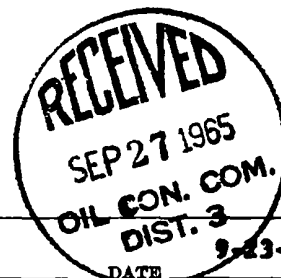
TITLE

DATE

CONDITIONS OF APPROVAL, IF ANY:

*See Instructions on Reverse Side

USGS(3) NMOC(2) DRB Humble HDM



NEW MEXICO OIL CONSERVATION COMMISSION
WELL LOCATION AND ACREAGE DEDICATION PLAT

Form C-102
Supersedes C-128
Effective 1-1-65

All distances must be from the outer boundaries of the Section.

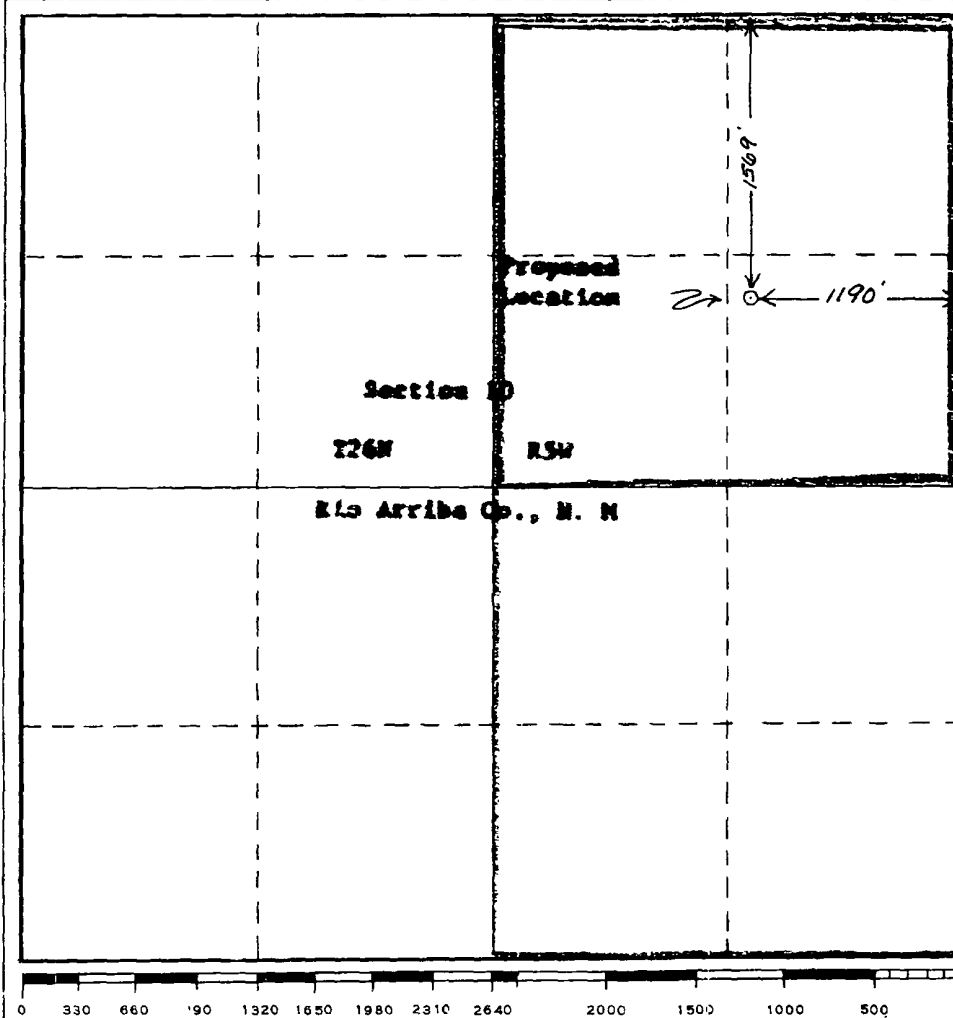
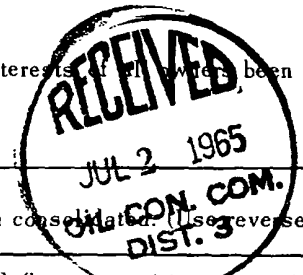
Operator Continental Oil Company			Lease AXI Apache "X"		Well No. 5
Unit Letter A	Section 10	Township 26N	Range 3W	County Rio Arriba	
Actual Footage Location of Well: 1369 feet from the North line and 1190 feet from the East line					
Ground Level Elev. 7243	Fenced Cliffs Manoverda		Pool So. Blanco Fenced Cliffs Blanco Manoverda	Acres 180-AC (East) 320-AC (Blanco)	

1. Outline the acreage dedicated to the subject well by colored pencil or hachure marks on the plat below.
2. If more than one lease is dedicated to the well, outline each and identify the ownership thereof (both as to working interest and royalty).
3. If more than one lease of different ownership is dedicated to the well, have the interests of all owners been consolidated by communitization, unitization, force-pooling, etc?

☐ Yes ☐ No If answer is "yes," type of consolidation _____

If answer is "no," list the owners and tract descriptions which have actually been consolidated. (Use reverse side of this form if necessary.) _____

No allowable will be assigned to the well until all interests have been consolidated (by communitization, unitization, forced-pooling, or otherwise) or until a non-standard unit, eliminating such interests, has been approved by the Commission.



CERTIFICATION

I hereby certify that the information contained herein is true and complete to the best of my knowledge and belief.

Original Signed By:

H. D. HALEY

Name
District Manager
Position
Continental Oil Company
Company
6-29-65
Date

I hereby certify that the well location shown on this plat was plotted from field notes of actual surveys made by me or under my supervision, and that the same is true and correct to the best of my knowledge and belief.

Date Surveyed
June 28, 1965

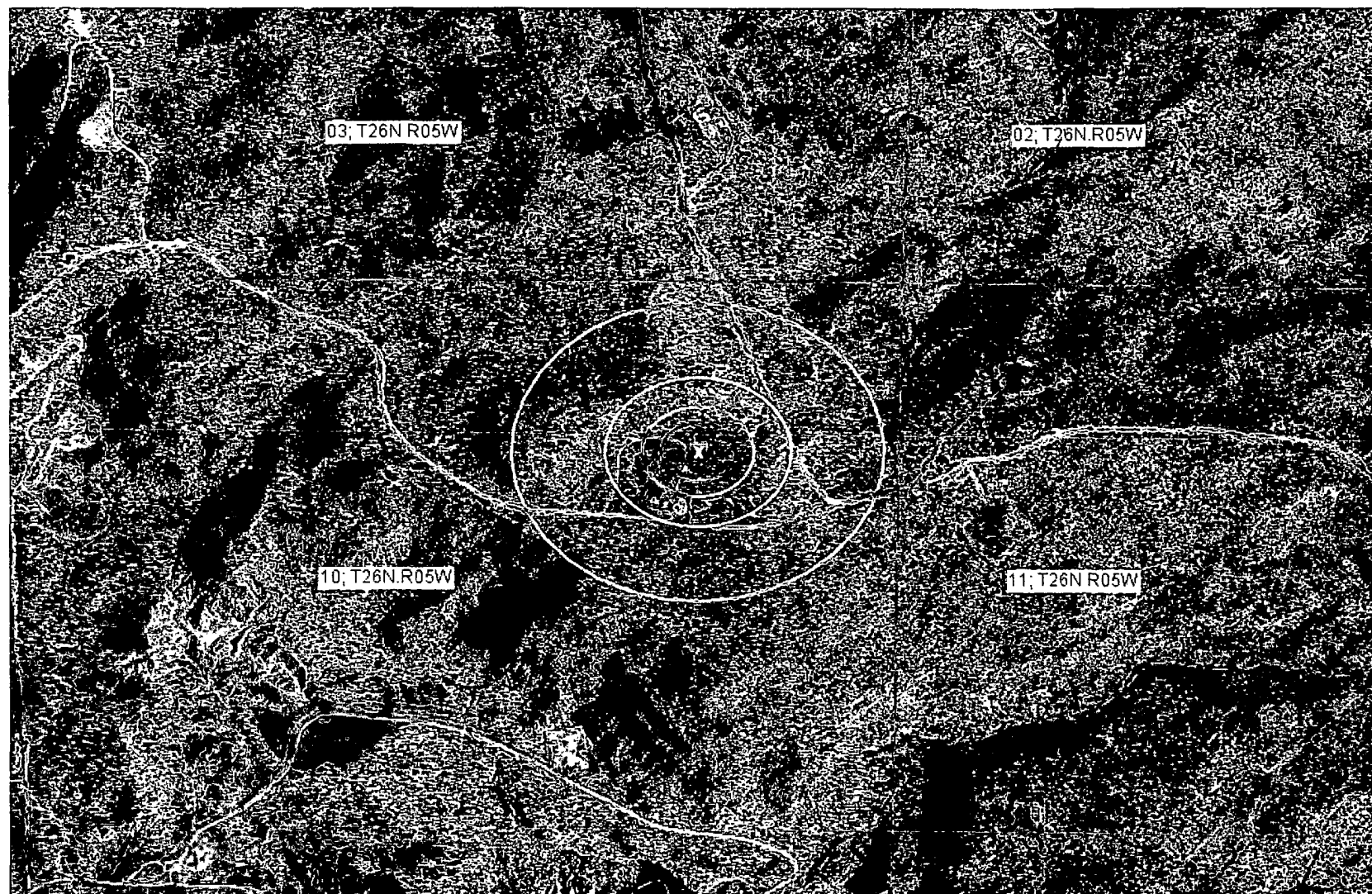
Registered Professional Engineer
and/or Land Surveyor

Certificate No.
N. M. #1905

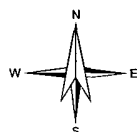
H. D. Haley

Appendix 03

Aerial Photo



0 500 1000ft



Petroleum Recovery
Research Center

Aerial - Jicarilla Apache Tribal 151 #2

Figure: 03

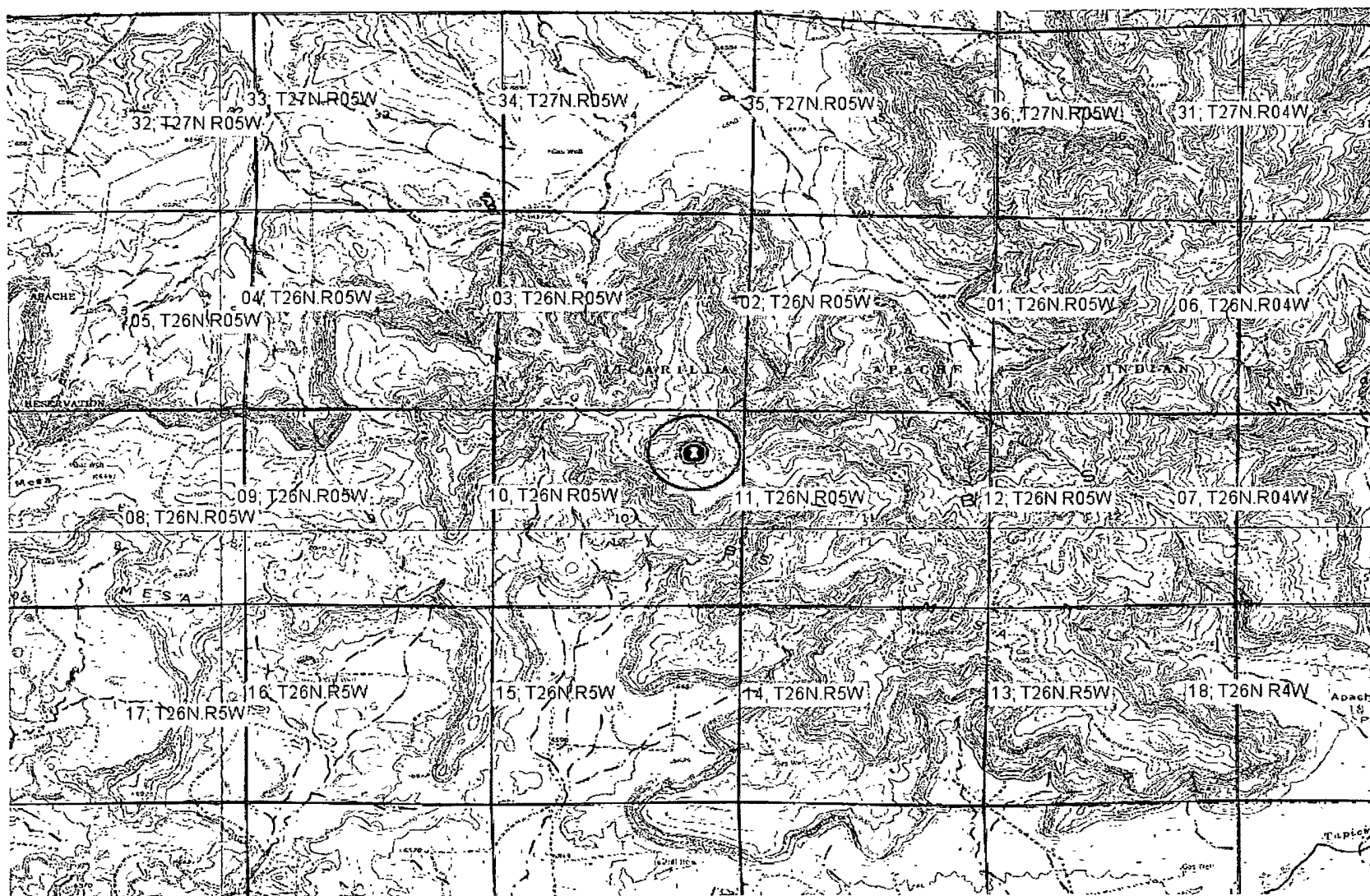
A - Sec 10, 26N, 05W

Dec 31, 2009

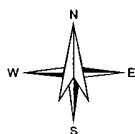
API 30-039-20087

Appendix 04

Municipality Boundary Map



0 2000 4000ft



Petroleum Recovery
Research Center

Municipalities - Jicarilla Apache Tribal 151 #2

Figure: 04

A - Sec 10, 26N, 05W

Dec 31, 2009

API 30-039-20087

Appendix 05

U.S. Fish & Wildlife Wetland Identification Map

Internet Mapping Framework



Legend

Ohio_wet_scan

- 0
- 1
- Out of range

Interstate
Major Roads

- Other Road
- Interstate
- State highway
- US highway

Roads

Cities

USGS Quad Index 24K

Lower 48 Wetland Polygons

- Estuarine and Marine Deepwater
- Estuarine and Marine Wetland
- Freshwater Emergent Wetland
- Freshwater Forested/Shrub Wetland
- Freshwater Pond
- Lake
- Other
- Riverine

Lower 48 Available Wetland Data

Non-Digital
Digital

No Data
Scan

NHD Streams

Counties 100K

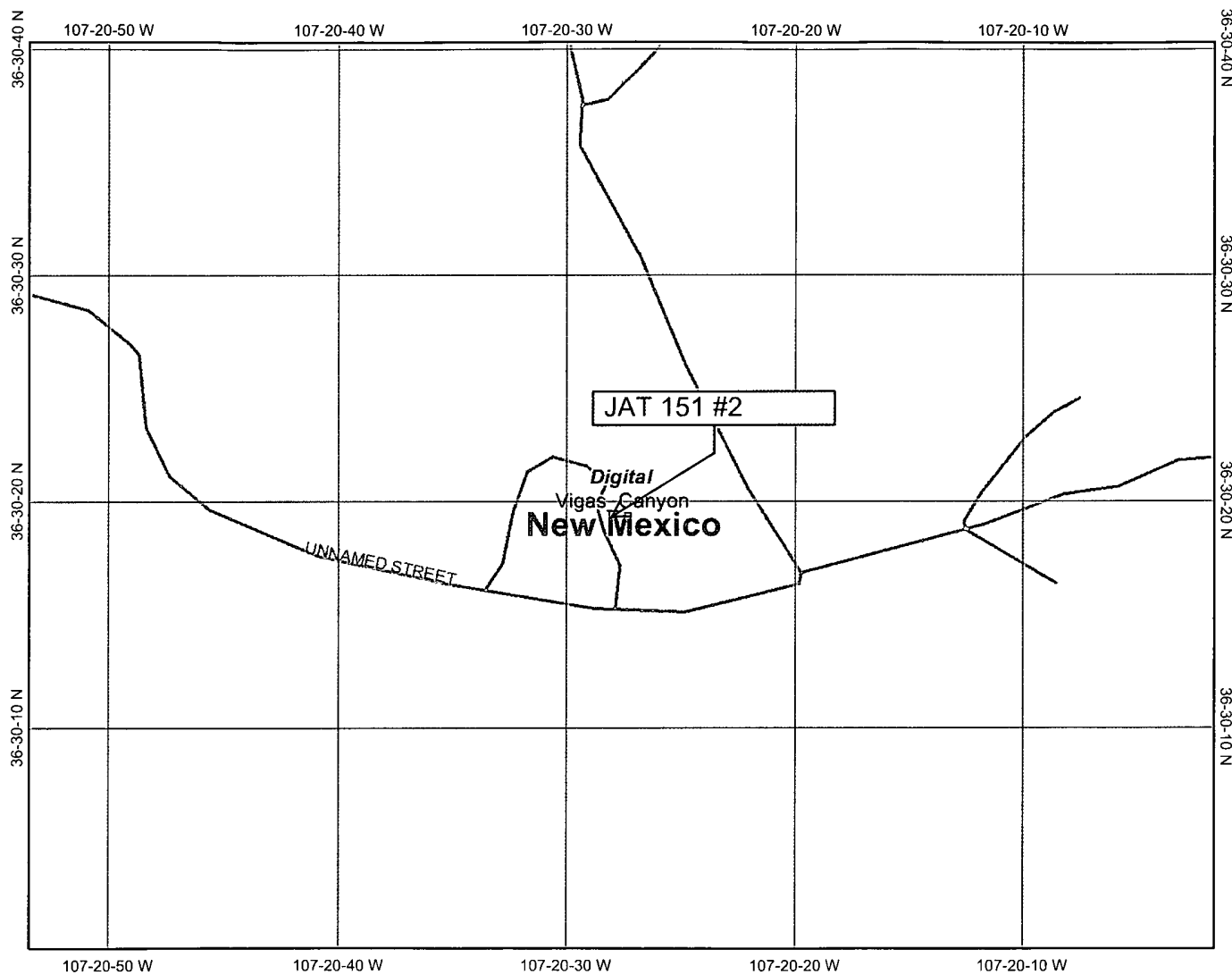
States 100K

South America

North America



Scale: 1:8,659

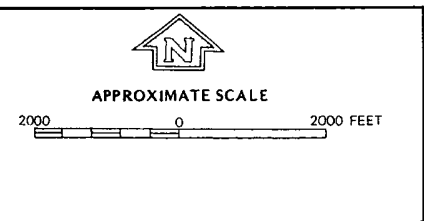
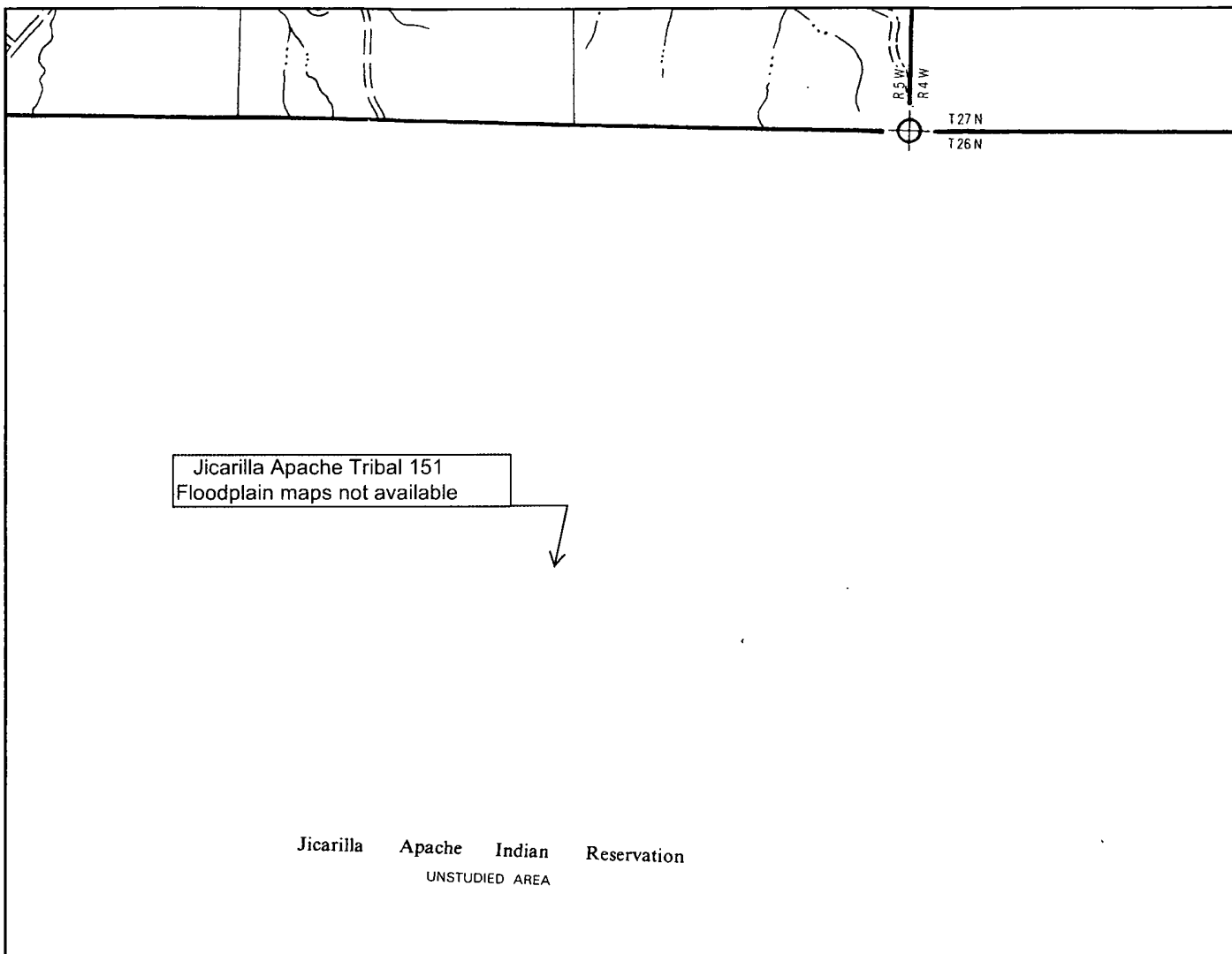


Map center: 36° 30' 20" N, 107° 20' 27" W

This map is a user generated static output from an Internet mapping site and is for general reference only. Data layers that appear on this map may or may not be accurate, current, or otherwise reliable. THIS MAP IS NOT TO BE USED FOR NAVIGATION.

Appendix 06

FEMA 100-year Floodplain Map

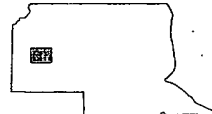


NATIONAL FLOOD INSURANCE PROGRAM

FIRM
FLOOD INSURANCE RATE MAP

**RIO ARriba COUNTY,
NEW MEXICO
UNINCORPORATED AREAS**


PANEL 550 OF 1325
(SEE MAP INDEX FOR PANELS NOT PRINTED)



PANEL LOCATION

COMMUNITY-PANEL NUMBER
350049 0550 B

EFFECTIVE DATE:
JANUARY 5, 1989

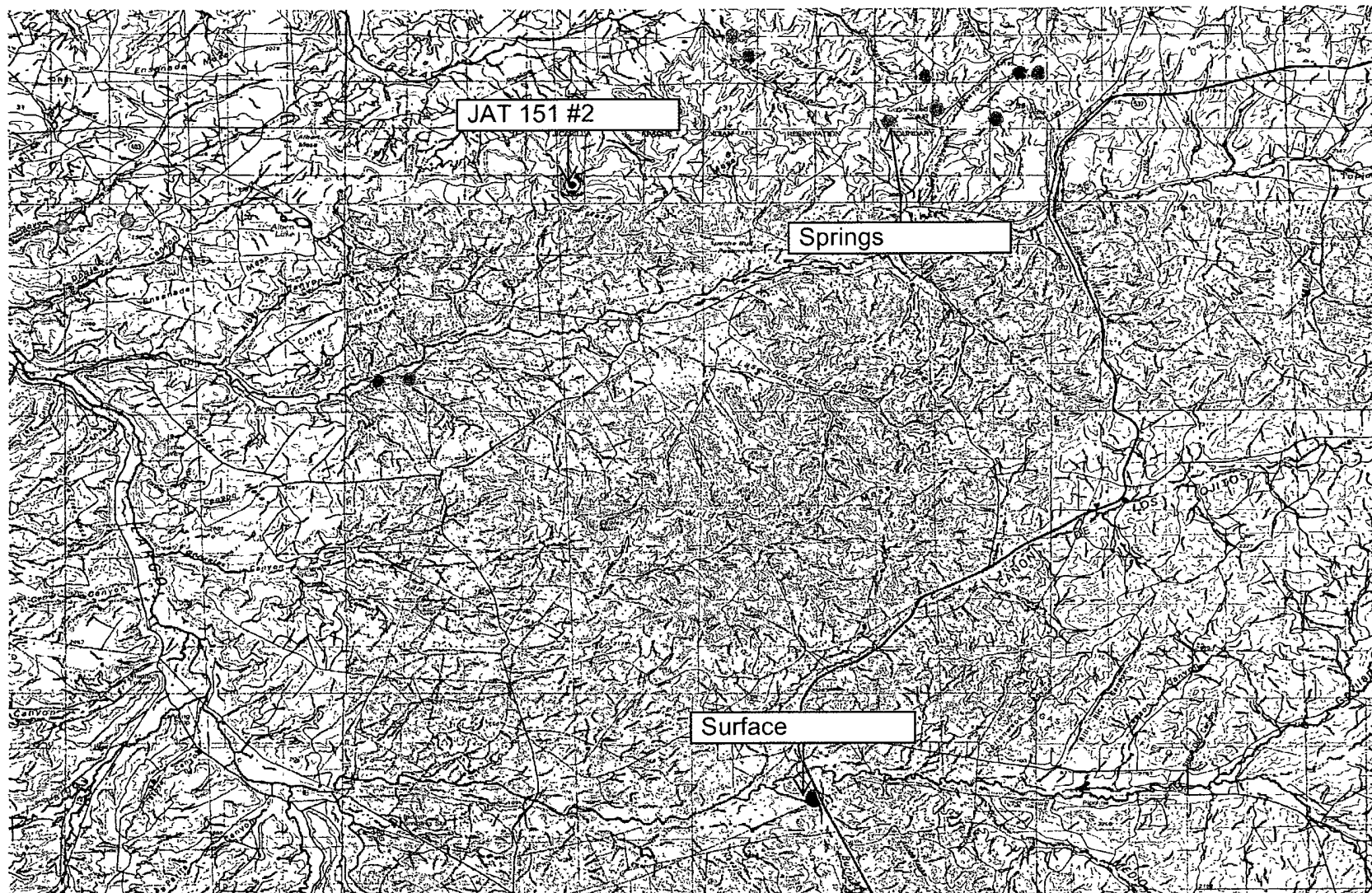


Federal Emergency Management Agency

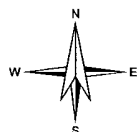
This is an official copy of a portion of the above referenced flood map. It was extracted using F-MIT On-Line. This map does not reflect changes or amendments which may have been made subsequent to the date on the title block. For the latest product information about National Flood Insurance Program flood maps check the FEMA Flood Map Store at www.msc.fema.gov

Appendix 07

Mines, Mills, & Quarries Map



0 2 4mi



Petroleum Recovery
Research Center

Mines, Mills, Quarries - Jicarilla Apache Tribal 151 #2

Figure: 07

A - Sec 10, 26N, 05W

Dec 31, 2009

API 30-039-20087

Appendix 08

**C-102 Location Plat
Facility Inspection Sheet
Below-Grade Tank Diagram**

UNITED STATES
DEPARTMENT OF THE INTERIOR
GEOLOGICAL SURVEY

SUBMIT IN DUPLICATE*

(See other in-
structions on
reverse side)Form approved.
Budget Bureau No. 42-R355.5.

WELL COMPLETION OR RECOMPLETION REPORT AND LOG*

1. TYPE OF WELL: OIL WELL <input type="checkbox"/> GAS WELL <input checked="" type="checkbox"/> DRY <input type="checkbox"/> Other _____		5. LEASE DESIGNATION AND SERIAL NO. Jicarilla Tribal Contract 151	
b. TYPE OF COMPLETION: NEW WELL <input checked="" type="checkbox"/> WORK OVER <input type="checkbox"/> DEEP-EN <input type="checkbox"/> PLUG BACK <input type="checkbox"/> DIFF. RESVR. <input type="checkbox"/> Other _____		6. IF INDIAN, ALLOTTEE OR TRIBE NAME Jicarilla Apache	
2. NAME OF OPERATOR PAN AMERICAN PETROLEUM CORPORATION		7. UNIT AGREEMENT NAME	
3. ADDRESS OF OPERATOR 301 Airport Drive, Farmington, New Mexico 87401		8. FARM OR LEASE NAME Jicarilla Apache Tribal 151	
4. LOCATION OF WELL (Report location clearly and in accordance with any State requirements)* At surface 1150' FWL & 1150' FWL At top prod. interval reported below Same At total depth Same		9. WELL NO.	
14. PERMIT NO.		DATE ISSUED JUL 13 1968	
15. DATE SPUDDED 3-21-68		16. DATE T.D. REACHED 6-15-68	
17. DATE COMPL. (Ready to prod.) 7-3-68		18. ELEVATIONS (DF, REB, RT, GR, ETC.)* GL 7256', 220 7244'	
19. ELEV. CASINGHEAD GL 7256'		10. FIELD AND POOL, OR WILDCAT Santa Barbara	
20. TOTAL DEPTH, MD & TVD 8350'		11. SEC. T. R., M., OR BLOCK AND SURVEY OR AREA NE 1/4 Section 10, T-26-N, R-1-W	
21. PLUG, BACK T.D., MD & TVD 8312'		12. COUNTY OR PARISH Santa Barbara	
22. IF MULTIPLE COMPL., HOW MANY*		13. STATE New Mexico	
23. INTERVALS DRILLED BY 0-70		19. ELEV. CASINGHEAD GL 7256'	
24. PRODUCING INTERVAL(S), OF THIS COMPLETION—TOP, BOTTOM, NAME (MD AND TVD)* Graneros Dakota 8111-8223' Middle Dakota 8223-8295'		25. WAS DIRECTIONAL SURVEY MADE No	
26. TYPE ELECTRIC AND OTHER LOGS RUN Induction Electrical, Gamma Ray & Acoustic Velocity		27. WAS WELL CORED No	
28. CASING RECORD (Report all strings set in well)			
CASING SIZE	WEIGHT, LB./FT.	DEPTH SET (MD)	HOLE SIZE
9-5/8"		430'	13-3/4"
6-1/2"		8350'	7-7/8"
		CEMENTING RECORD	
		400 cu (3 strings with 24 8-3/8" & 4063' int. 600, and 300 & 3rd 1100 cu.)	
		AMOUNT PULLED None	
29. LINER RECORD			
SIZE	TOP (MD)	BOTTOM (MD)	SCREEN (MD)
30. TUBING RECORD			
SIZE	DEPTH SET (MD)	PACKER SET (MD)	
2-3/8"	8303'	None	
31. PERFORATION RECORD (Interval, size and number)			
8226-36' x 4 SPV 8112-23' x 4 SPV			
32. ACID, SHOT, FRACTURE, CEMENT SQUEEZE, ETC.			
DEPTH INTERVAL (MD)		AMOUNT AND KIND OF MATERIAL USED	
8226-36' From		41,370 gal wt. 20,000 20-40 ss.	
40,000 10-20 ss x 2,000 12-20 glass beads			
8112-23' From		35,070 gal wt. 20,000 20-40 ss.	
40,000 10-20 ss x 2,000 12-20 glass beads			
33.* PRODUCTION			
DATE FIRST PRODUCTION		PRODUCTION METHOD (Flowing, gas lift, pumping—size and type of pump)	
		Flowing	
WELL STATUS: (Producing or shut-in) Shut in			
DATE OF TEST	HOURS TESTED	CHOKE SIZE	PROD'N. FOR TEST PERIOD
7-12-68	3	3/4"	
FLOW. TUBING PRESS.	CASING PRESSURE	CALCULATED 24-HOUR RATE	OIL—BBL.
230	911		2720
GAS—MCF		WATER—BBL.	
341		0	
OIL GRAVITY-API (CORR.)			
34. DISPOSITION OF GAS (Sold, used for fuel, vented, etc.)			
Sold to Southern Union Gas Company			
35. LIST OF ATTACHMENTS			
36. I hereby certify that the foregoing and attached information is complete and correct as determined from all available records			
ORIGINAL SIGNED BY G. W. Eaton, Jr.			
SIGNED G. W. Eaton, Jr.		TITLE Area Engineer	
DATE July 17, 1968			

*(See Instructions and Spaces for Additional Data on Reverse Side)

NEW MEXICO OIL CONSERVATION COMMISSION
WELL LOCATION AND ACREAGE DEDICATION PLAT

20087

Form C-102
Supersedes C-128
Effective 1-1-65

All distances must be from the outer boundaries of the Section

Operator PAN AMERICAN PETROLEUM CORPORATION			Lease Jicarilla Apache Tribal 151		Well No. 2
Unit Letter A	Section 10	Township 26 North	Range 5 West	County Rio Arriba	
Actual Footage Location of Well: 1150 feet from the North line and 1150 feet from the East line					
Ground Level Elev.	Producing Formation Dakota	Pool Basin Dakota	Dedicated Acreage: 320 Acres		
Report Later					

1. Outline the acreage dedicated to the subject well by colored pencil or hachure marks on the plat below.
2. If more than one lease is dedicated to the well, outline each and identify the ownership thereof (both as to working interest and royalty).
3. If more than one lease of different ownership is dedicated to the well, have the interests of all owners been consolidated by communitization, unitization, force-pooling, etc?

☐ Yes ☐ No If answer is "yes," type of consolidation _____

If answer is "no," list the owners and tract descriptions which have actually been consolidated. (Use reverse side of this form if necessary.) _____

No allowable will be assigned to the well until all interests have been consolidated (by communitization, unitization, forced-pooling, or otherwise) or until a non-standard unit, eliminating such interests, has been approved by the Commission.

CERTIFICATION

I hereby certify that the information contained herein is true and complete to the best of my knowledge and belief.

Name
G. W. Eaton, Jr.
Position
Area Engineer
Company
PAN AMERICAN PETROLEUM CORP.
Date
March 27, 1968

STATE OF NEW MEXICO
I hereby certify that the well location shown on this plat was plotted from field notes of actual surveys made by me or under my supervision, and that the same are true and correct to the best of my knowledge and belief.
REGISTERED LAND SURVEYOR
3602

Date Surveyed
March 15, 1968
Registered Professional Engineer and/or Land Surveyor

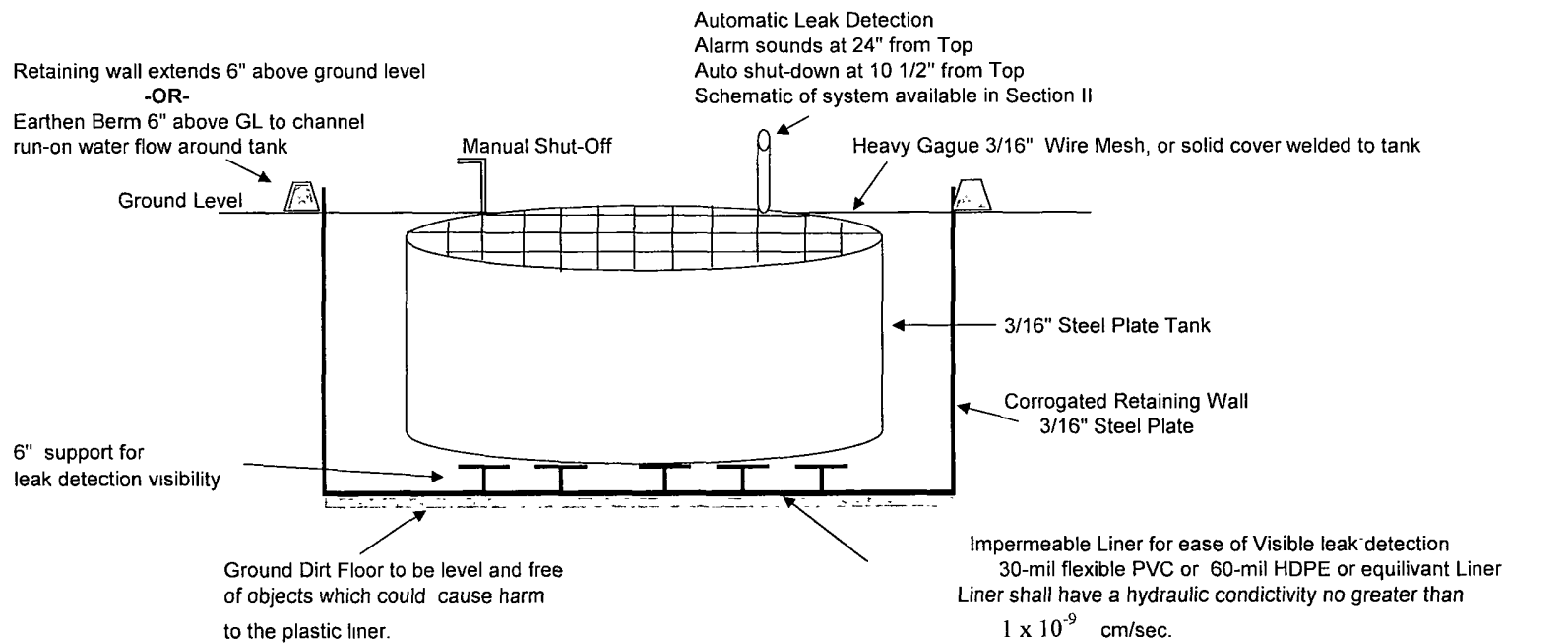
E. J. Cook
Certificate No. **3602**



EnerVest Operating, LLC
Western Division

Below-Grade Tank System

Gravity Fed - Produced Water



Below-Grade System Components

Tank Size		Excavation Areas
Capacity	Dia x Height	
125 Bbl	15' x 4'	18' x 18' x 4' Square
120 Bbl	12' x 6'	18' x 4' Circular
100 Bbl	12' x 5'	18' x 5' Circular

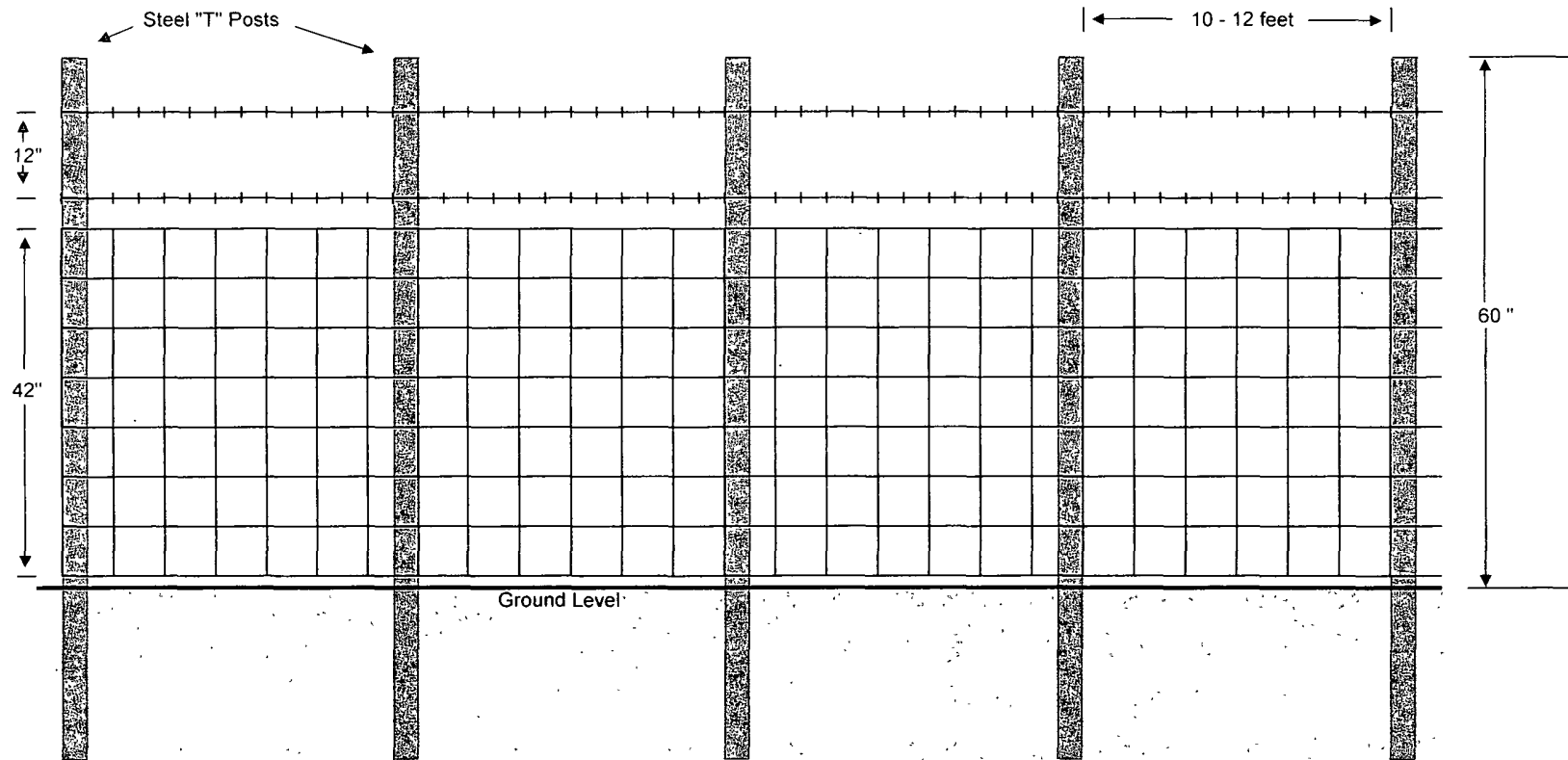
Tank size dependent upon water production & road conditions
Excavation Area size dependent upon tank size

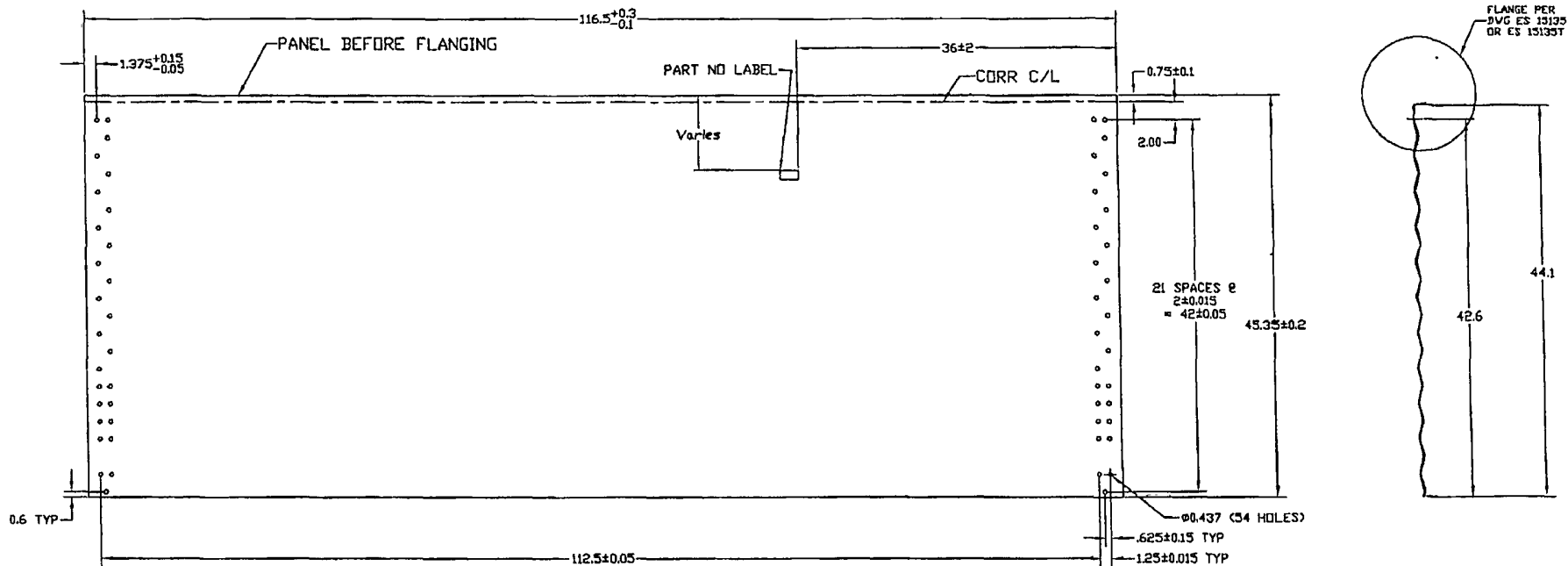
ENERVEST OPERATING, LLC

Proposed Alternative Fencing

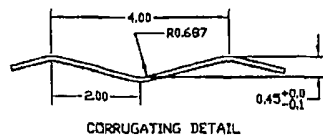
Below-Grade Tank Construction

42" Hogwire Fence with 2 strands barbed-wire on top





44' WALL PANEL BEFORE FLANGING



CORRUGATING DETAIL

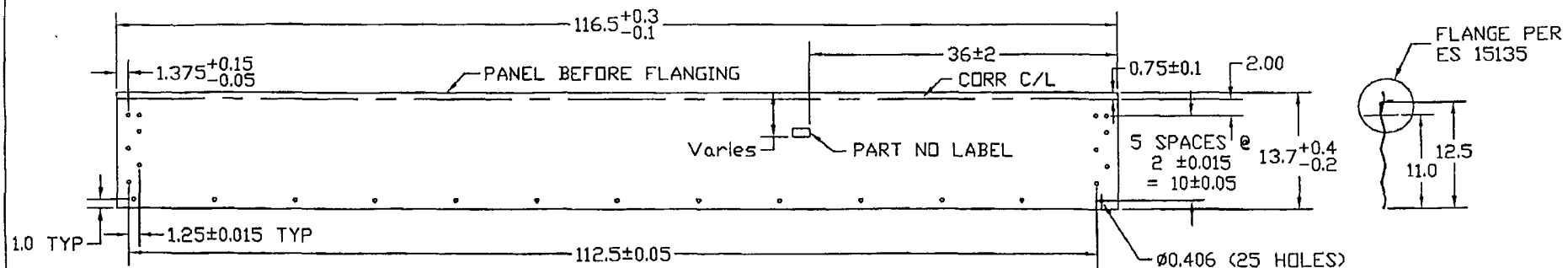
- MANUFACTURING NOTES:
1. CORRUGATION..... SEE DETAIL
 2. HOLE OFF CENTER OF CORR..... ± .05
 3. HOLE BURR MAX..... .01
 4. CUT OFF BURR MAX..... .01
 5. CORNER HOLE TO HOLE DIAGONAL ± .15

MATERIAL SPECIFICATIONS				
THICKNESS		BLANK WIDTH	WALL SHEET PART NO	WEIGHT (lb)
NOMINAL	MINIMUM			
0.066	0.061	46.5	CW4415F	98.5
0.096	0.088	46.3	CW4413F	143.4

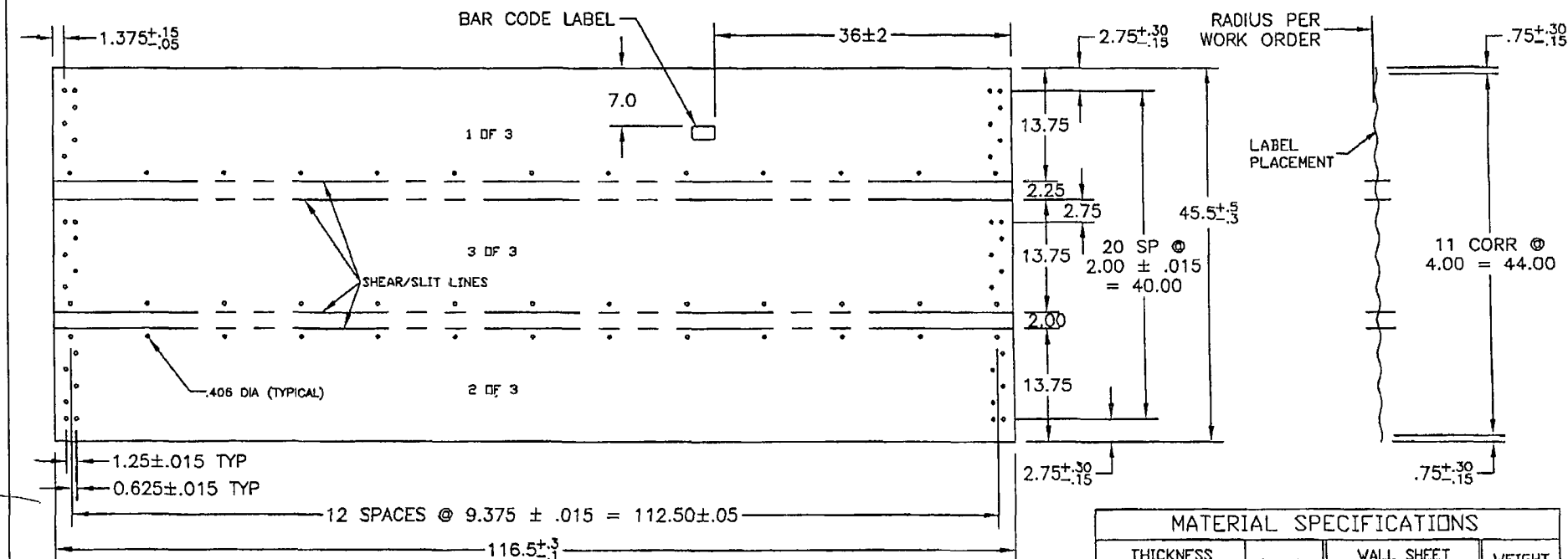
CORRUGATING DETAIL				MATERIAL		BLANK SIZE		SURFACE AREA		WEIGHT (LBS)	
				SEE CHART - ASTM A653 SS GR 30 G115 OIL		46.5 x 116.5				see chart	
				THIS DRAWING IS THE EXCLUSIVE PROPERTY OF WESTEEL AND ALL RIGHTS ARE RESERVED		SCALE		DWN. (Y.M.D.)		LOCATION	
				NO PART OF THIS DRAWING MAY BE USED OR REPRODUCED IN ANY MANNER WHATSOEVER WITHOUT WRITTEN PERMISSION FROM WESTEEL, a Division of JENISYS ENGINEERED PRODUCTS		nts		02.02.19		WINNIPEG	
				DRAWING TITLE		E.C.R.		E.P. NO.		TYPE	
				CONTAINMENT RING 44' WALL PANEL		A6647		02-255		ACAD14	
				CHKD.		SIZE		DRAWING NO.		REV. NO.	
				BA		B		ES 15510		1	
				APPD.		CUSTOMER		PRINTING DATE			
				BA							
				DIMENSIONS SHOWN ARE IMPERIAL							
				UNITS SHOWN IN BRACKETS							
				TOLERANCES UNLESS OTHERWISE NOTED:							
				DIMENSIONS:							
				IMPERIAL (in.) METRIC (mm)							
				.xx ± .1 .x ± .2							
				.xxx ±.03 .x ± 1.0							
				.xxx ±.010 .xxx ± .50							
				ANGULAR ± 1°							
1 01.28.04 LOWERED CLAMP LOCATION 4' A6786 RF BA											
NO DATE REVISION E.C.R. BY CH.											

NO	DATE	REVISION	E.C.R.	BY	CH.
1	01.28.04	LOWERED CLAMP LOCATION 4'	A6786	RF	BA

DIMENSIONS SHOWN ARE IMPERIAL UNITS SHOWN IN BRACKETS	
TOLERANCES (UNLESS OTHERWISE NOTED)	
DIMENSIONS:	
IMPERIAL (in.)	METRIC (mm)
XX ± .1	XX ± 2
XXX ± .03	XXX ± 1.0
XXX ± .010	XXX ± .50
ANGULAR ± 1°	



13 1/2' WALL PANEL LAYOUT BEFORE FLANGING

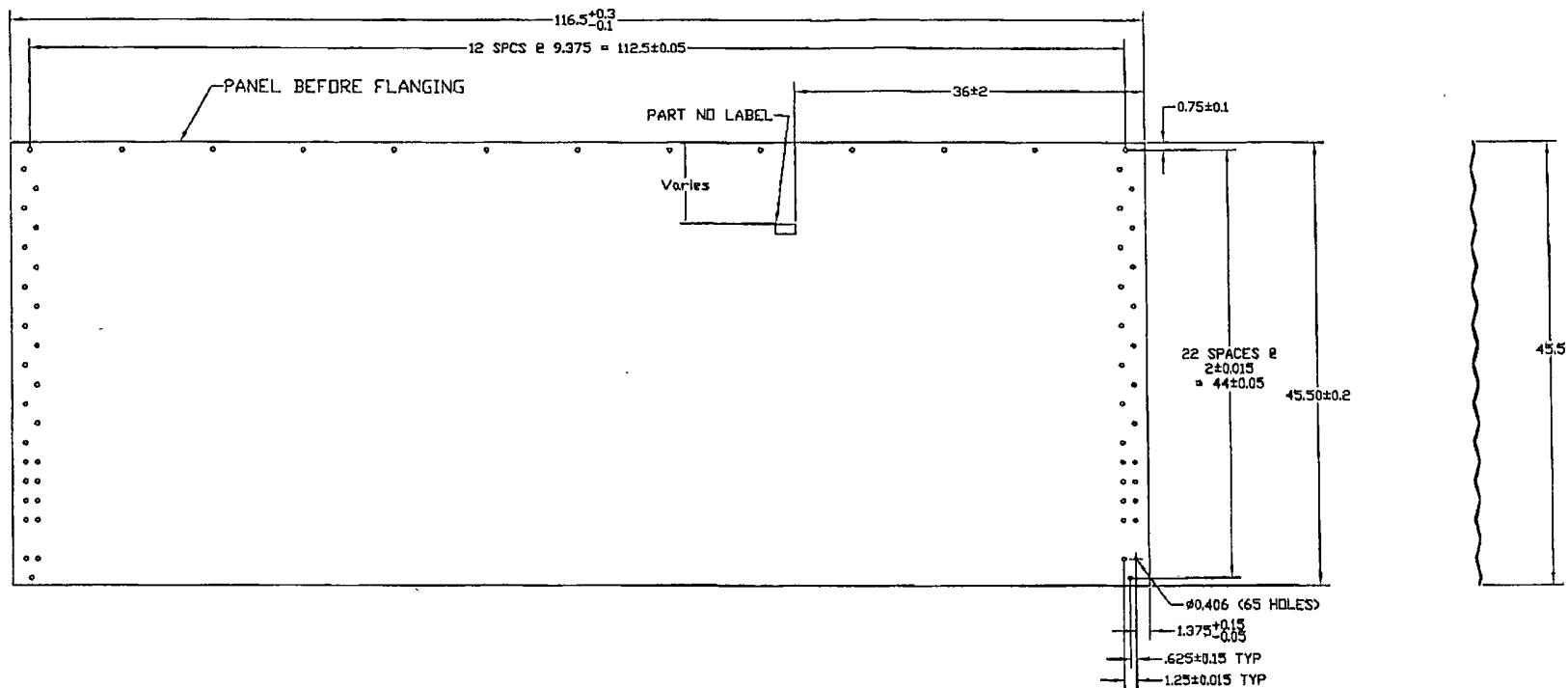


MANUFACTURING VIEW ONLY - TRIPLE PANEL AFTER
CORR & PUNCH, BEFORE SLITTING & FLANGING

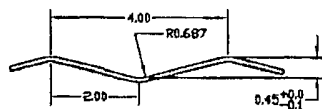
MATERIAL SPECIFICATIONS				
THICKNESS		BLANK WIDTH	WALL SHEET PART NO	WEIGHT (lb)
NOMINAL	MINIMUM			
0.066	0.061	14.75	CW1357F	31.5

					MATERIAL SEE CHART - ASTM A653 SS GR50 G115 OIL		BLANK SIZE 46.5x116.5 (3 pcs)		WEIGHT (LBS.) 31.5							
					DESND. BA	WESTEEL THIS DRAWING IS THE EXCLUSIVE PROPERTY OF WESTEEL AND ALL RIGHTS ARE RESERVED NO PART OF THIS DRAWING MAY BE USED OR REPRODUCED IN ANY MANNER WHATSOEVER WITHOUT WRITTEN PERMISSION FROM Westeel Limited	SCALE N.T.S.		DWN. (Y.M.D.) 2004.11.30		LOCATION WPG					
					DWN. RF		E.C.R. A6834		E.P. NO. 02-255		DWG TYPE A-2000					
					CHKD. BA		DRAWING TITLE 13.5' FULL PANEL - 57' ONLY CONTAINMENT RING									
					APPD. BA		CUSTOMER -		PRINTING DATE (Y.M.D.) -		SIZE A		DRAWING NO. ES 15516		REV. NO. O	
					DIMENSIONS SHOWN ARE IMP MM UNITS SHOWN IN BRACKETS											
					TOLERANCES (UNLESS OTHERWISE NOTED)											
					DIMENSIONS											
					IMPERIAL (in.) METRIC (mm)											
					.X ? .1 X ? 2											
					.XX ? .03 .X ? 1.0											
					.XXX ? .010 .XX ? .50											
					ANGULAR: ± 1°											
NO	DATE	REVISION	E.C.R.	BY	CH											

DIMENSIONS SHOWN ARE IMP MM UNITS SHOWN IN BRACKETS	
TOLERANCES (UNLESS OTHERWISE NOTED)	
DIMENSIONS:	
IMPERIAL (in.)	METRIC (mm)
.X ? .1	X ? 2
.XX ? .03	.X ? 1.0
.XXX ? .010	.XX ? .50
ANGULAR: ± 1°	



44' WALL PANEL AFTER CORRUGATING AND PUNCHING



CORRUGATING DETAIL

MANUFACTURING NOTES:

1. CORRUGATION..... SEE DETAIL
2. HOLE OFF CENTER OF CORR..... ± .05
3. HOLE BURR MAX..... .01
4. CUT OFF BURR MAX..... .01
5. CORNER HOLE TO HOLE DIAGONAL ± .15

MATERIAL SPECIFICATIONS

THICKNESS		BLANK WIDTH	WALL SHEET PART NO	WEIGHT (lb)
NOMINAL	MINIMUM			
0.066	0.061	46.5	CW445715F	97.7
0.139	0.130	46.2	CW445710F	208.5

NO	DATE	REVISION	E.C.R.	BY	CH.

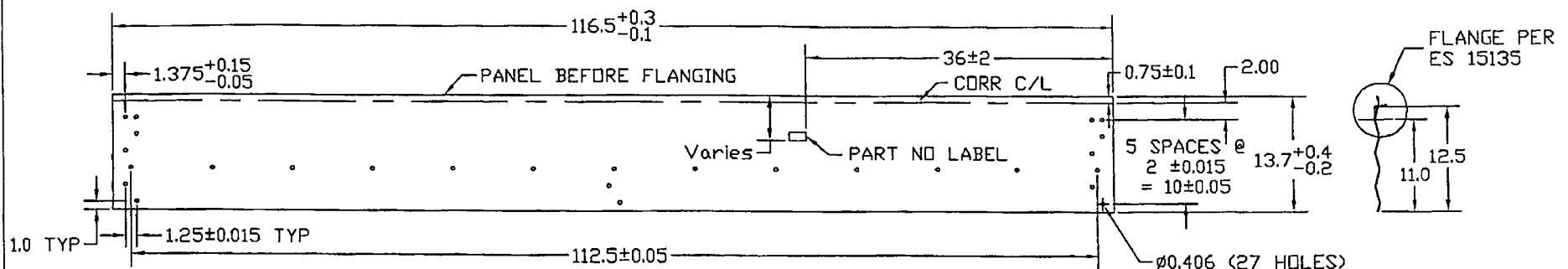
DIMENSIONS SHOWN ARE IMPERIAL
UNITS SHOWN IN BRACKETS

TOLERANCES
(UNLESS OTHERWISE NOTED)

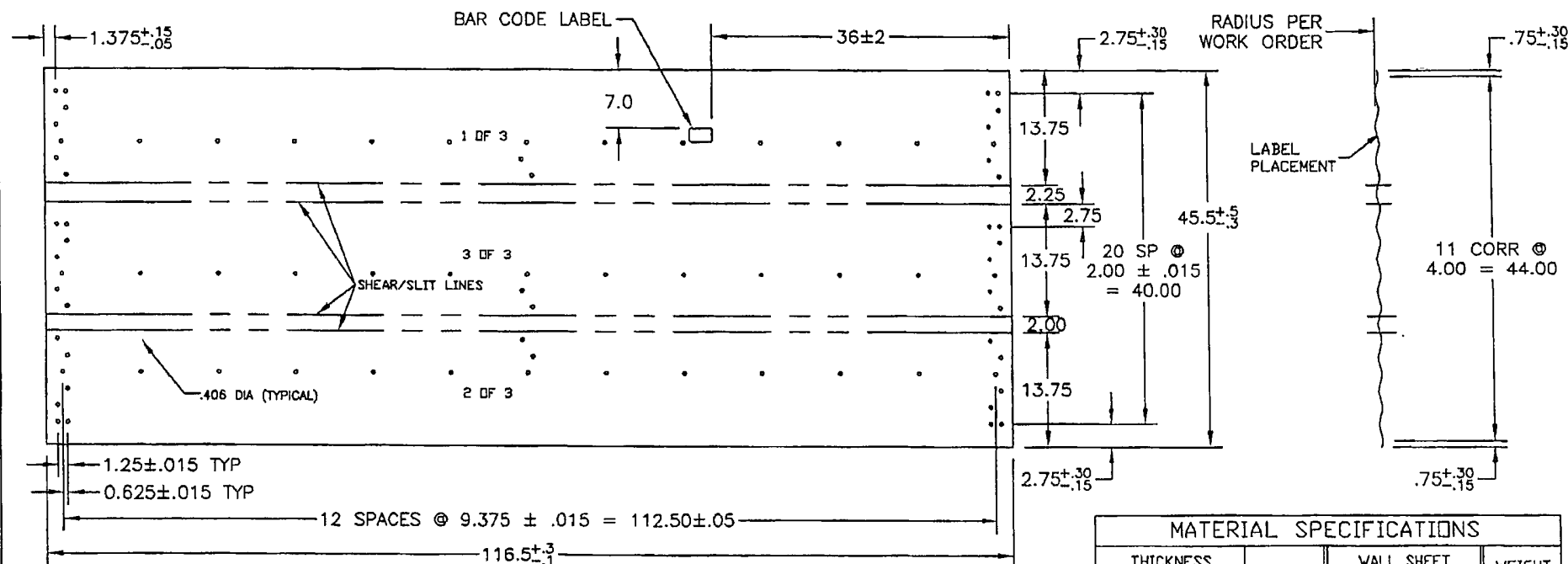
DIMENSIONS:
IMPERIAL (in.) METRIC (mm)
.XX ± .1 .XX ± .2
.XXX ± .03 .XX ± 1.0
.XXX ± .010 .XX ± .50
ANGULAR: ± 1°

MATERIAL SEE CHART - ASTM A653 SS GR 50 G115 OIL		BLANK SIZE 46.5 x 116.5		SURFACE AREA		WEIGHT (LBS) see chart				
DESND. BA		THIS DRAWING IS THE EXCLUSIVE PROPERTY OF WESTEEL AND ALL RIGHTS ARE RESERVED NO PART OF THIS DRAWING MAY BE USED OR REPRODUCED IN ANY MANNER WHATSOEVER WITHOUT WRITTEN PERMISSION FROM WESTEEL, a Division of JENISSY ENGINEERED PRODUCTS		SCALE nts		DVN. (Y.M.D.) 04.12.01		LOCATION WINNIPEG		
DVN. RF				E.C.R. A6834		E.P. NO.		TYPE A-2000		
CHKD. BA		DRAWING TITLE 44' FULL PANEL - 57' ONLY CONTAINMENT RING			SIZE B		DRAWING NO. ES 15518		REV. NO. 0	
APPD. BA		CUSTOMER			PRINTING DATE					

THIS DRAWING IS THE EXCLUSIVE PROPERTY OF WESTEEL
AND ALL RIGHTS ARE RESERVED
NO PART OF THIS DRAWING MAY BE USED OR REPRODUCED IN
ANY MANNER WHATSOEVER WITHOUT WRITTEN PERMISSION FROM
WESTEEL, a Division of JENISYS ENGINEERED PRODUCTS



13 1/2" WALL PANEL LAYOUT BEFORE FLANGING




MANUFACTURING VIEW ONLY - TRIPLE PANEL AFTER
CORR & PUNCH, BEFORE SLITTING & FLANGING

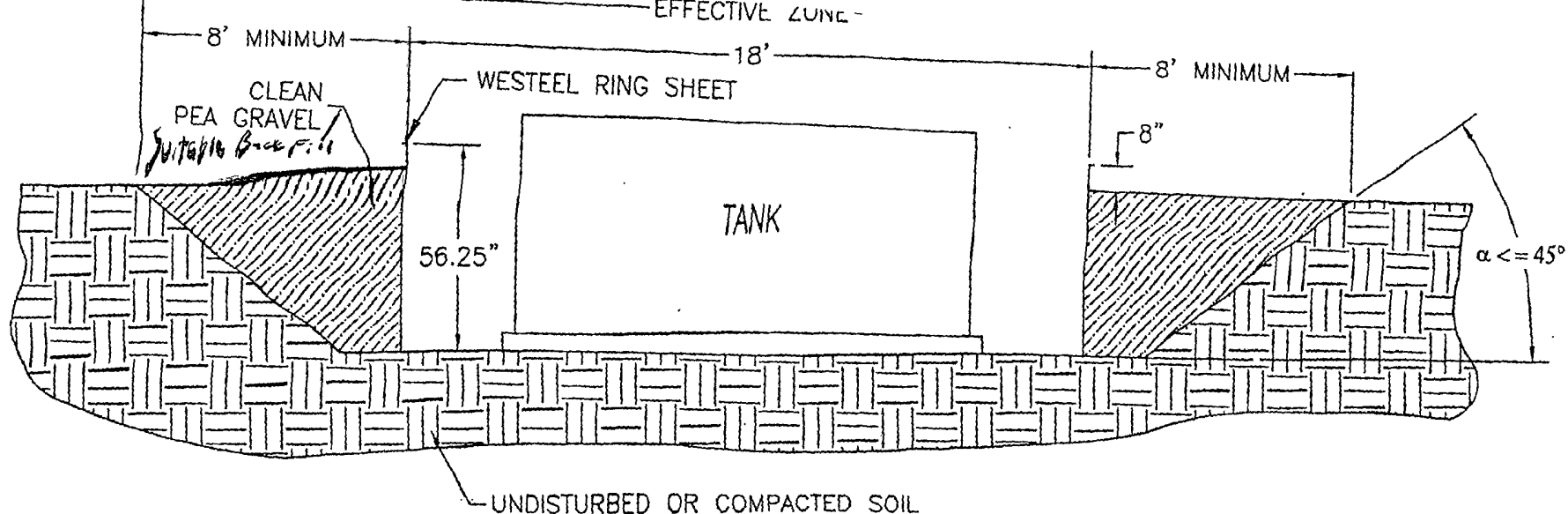
MATERIAL SPECIFICATIONS				
THICKNESS		BLANK WIDTH	WALL SHEET PART NO	WEIGHT (lb)
NOMINAL	MINIMUM			
0.066	0.061	14.75	019419	31.5

				MATERIAL SEE CHART - ASTM A653 SS GR50 G115 OIL		BLANK SIZE 46.5x116.5 (3 pcs)		WEIGHT (LBS) 31.5	
				DESND. BA		SCALE N.T.S.		DWN. (Y.M.D.) 2006.08.08	
				DWN. RF		E.C.R. A6834		E.P. NO. 02-255	
				CHKD. BA		DRAWTITLE 9.5" FULL PANEL - 52.5" ONLY CONTAINMENT RING		DVG TYPE A-2000	
				APPD. BA		CUSTOMER -		PRINTING DATE (Y.M.D.) -	
						SIZE A		DRAWING NO. 019419	
								REV. NO. O	

NO	DATE	REVISION	E.C.R.	BY	CH

DIMENSIONS SHOWN ARE IMP	
MM UNITS SHOWN IN BRACKETS	
TOLERANCES (UNLESS OTHERWISE NOTED)	
DIMENSIONS:	
IMPERIAL (in.)	METRIC (mm)
.X ? .1	X ? 2
.XX ? .03	.X ? 1.0
.XXX ? .010	.XX ? .50
ANGULAR: ± 1°	

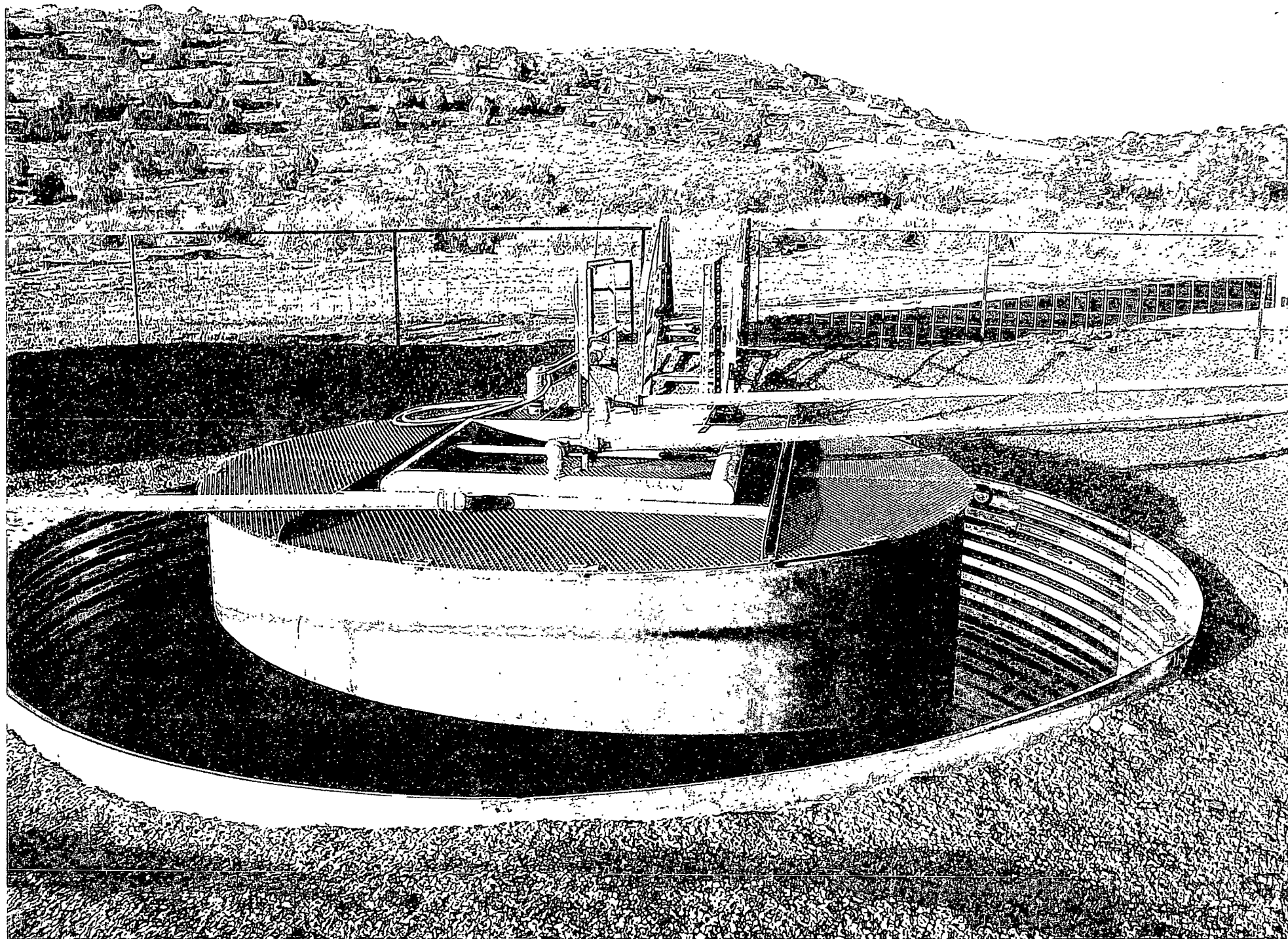
MATERIAL SEE CHART - ASTM A653 SQ GR50 GI15 OIL		BLANK SIZE 46.6x116.5 (2 pcs)		SURFACE AREA		WEIGHT (LBS) 49.4	
DESIGN RM	 THIS DRAWING IS THE EXCLUSIVE PROPERTY OF WESTEEL AND ALL RIGHTS ARE RESERVED. NO PART OF THIS DRAWING MAY BE USED OR REPRODUCED IN ANY MANNER WHATSOEVER WITHOUT WRITTEN PERMISSION FROM WESTEEL, a division of JENIST'S ENGINEERED PRODUCTS.			SCALE n ts	DWN. CYM.DJ 98.08.13	LOCATION WINNIPEG	
DWN. RM				E.C.R. A 6428	E.P. NO. 98-197	TYPE ACAD14	
CHECK YS	DRAWING TITLE CONTAINMENT RING 22" WALL PANEL			SIZE B	DRAWING NO. C10514		REV. NO. 1
APPR. RM	CUSTOMER	PRINTING DATE					

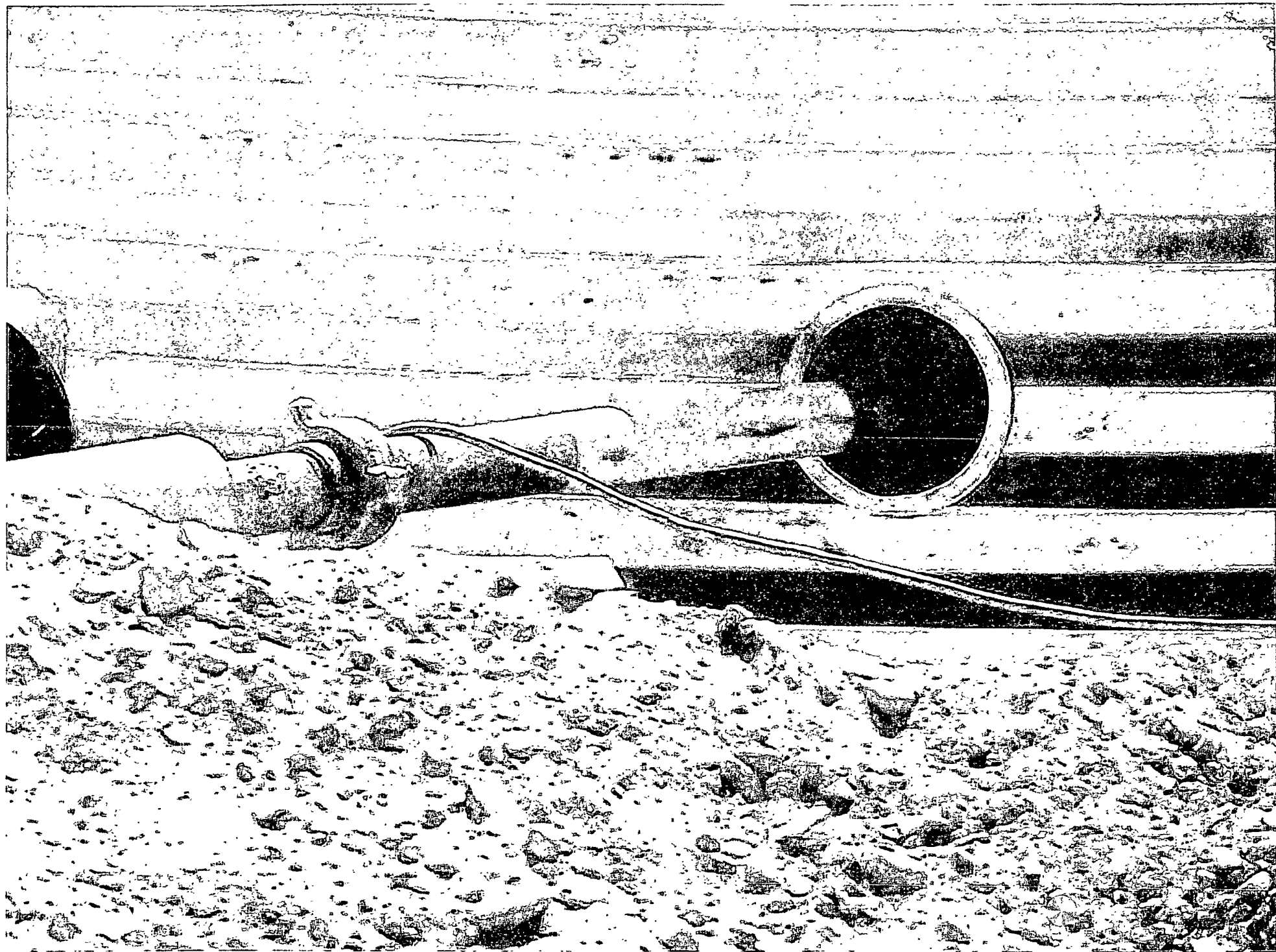


INSTALLATION INSTRUCTIONS & SITE REQUIREMENTS

1. EXCAVATE AS PER ABOVE
2. FOR BEST RESULTS, BACKFILL WITH CLEAN PEA GRAVEL (OR EQUIVALENT FREE FLOWING MATERIAL) EVENLY AROUND THE STRUCTURE, TAKING CARE NOT TO FILL IN ANY ONE AREA VERY HIGH RELATIVE TO OTHER AREAS, SO AS TO MAINTAIN THE STRUCTURE AS ROUND. WORKING AROUND THE STRUCTURE IN APPROXIMATELY 6" LIFTS IS RECOMMENDED. (NOTE: ALTERNATIVE MATERIALS CAN BE USED BUT CARE MUST BE TAKEN TO INSURE THAT THE EXTERNAL PRESSURES ACTING ON THE STRUCTURE REMAIN UNIFORM. IF NATIVE SOIL IS USED AS A BACKFILL MATERIAL, IT SHOULD BE UNIFORM IN CONSISTENCY, AND BE FREE OF LARGE ROCKS OR UNBROKEN CLUMPS, WHICH COULD RESULT IN UNEVEN LOADING).
3. THE COMPLETED STRUCTURE SHOULD EXTEND APPROXIMATELY 8" ABOVE GRADE
4. TO INSURE STRUCTURAL INTEGRITY, UNEVEN EXTERNAL WALL PRESSURE IS TO BE AVOIDED. NO VEHICLES OR OTHER SOURCES OF POINT LOADING SHOULD BE PERMITTED WITHIN THE EFFECTIVE ZONE (AS ILLUSTRATED).
5. WESTEEL IS NOT LIABLE FOR ANY DAMAGES OR INJURIES RESULTING FROM ANY FAILURE DUE TO IMPROPER INSTALLATION, IMPROPER SITE CONDITIONS, OR INADEQUATE MAINTENANCE OF THE SITE.

NOTE: THIS SYSTEM IS NOT DESIGNED FOR THE SECONDARY CONTAINMENT OF LIQUIDS, RATHER, TO ALLOW FOR INSPECTION OF THE TANK.





ENERVEST OPERATING LLC

N - 36.50565

W - 107.34187

Below Grade Tank
Observed Sitting RequirementsLease Name & Well Number 5101 AP. TRIBAL 151-2API No. 3003920087Observed by GROVER VIS. 1Date Observed 9-9-09

MEASURED FROM THE BELOW-GRADE TANK: Yes No If not within limits, explain:

Continuously flowing water course > 300 ft. ☒ ☐ _____Significant Watercourse, lakebed, sinkhole or
playa lake > 200 feet ☒ ☐ _____Permanent Residence > 200 feet ☒ ☐ _____School > 200 feet ☒ ☐ _____Hospital > 200' ☒ ☐ _____Institution or Church > 200' ☒ ☐ _____Private, domestic fresh water well or
spring > 500 feet ☒ ☒ MIS READ QUESTIONAny other fresh water well or spring > 1000 feet ☒ ☒ "Within incorporated municipal boundary of
defined municipal fresh water field ☐ ☒ _____Wetland area > 500 feet ☒ ☒ "Overlying a subsurface mine ☐ ☒ _____

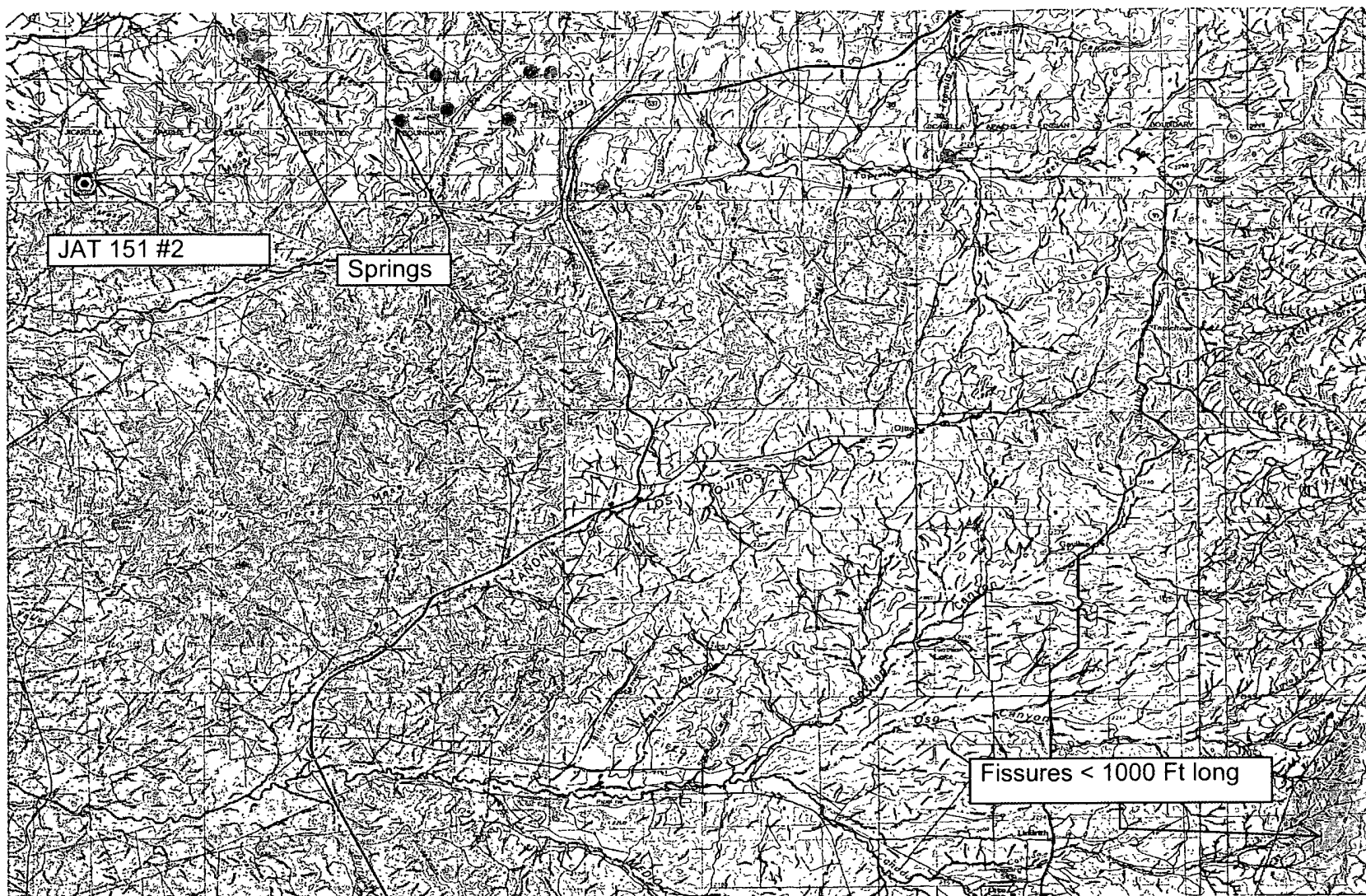
Distance to watercourse or dry wash should be to nearest edge

Please include distance & direction to all waterwells and/or wetland areas

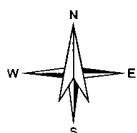
Each Below-Grade Tank needing to be permitted, needs a visual inspection
of the above Criteria as per Rule 19.15.17.10

Appendix 09

Karst Map



0 2 4mi



Petroleum Recovery
Research Center

Karst - Jicarilla Apache Tribal 151 #2

Figure: 09

A - Sec 10, 26N, 05W

Dec 31, 2009

API 30-039-20087

REFERENCES

Wetland Map:

U. S. Fish and Wildlife Service
National Wetlands Inventory
Wetlands Mapper
www.fws.gov/wetlands/data/mapper

Floodplains map:

Federal Emergency Management Agency
National Flood Insurance Program
FIRM (Flood Insurance Rate Map)
Map Service Center
<http://msc.fema.gov/webapp/wcs/stores/servlet/FemaWelcomeView?storeId=10001&catalogId=10001&langId=-1>

Depth to Ground Water: Individual water well documentation.

State of New Mexico
Office of the State Engineer
New Mexico Water Rights Reporting System
http://www.ose.state.nm.us/waters_db_index.html

Subsurface Mines:

EMNRD
Mining & Minerals Division
Mines, Mills & Quarries Commodity Group
<http://www.emnrd.state.nm.us/MMD/index.htm>

Regional Hydrogeology:

Stone et al., 1983, Hydrogeology and Water Resources of the San Juan Basin, New Mexico; Socorro, New Mexico Bureau of Mines and Mineral Resources Hydrologic Report 6, 70 p.

Base Maps:

Petroleum Recovery Research Center
PRRC PitRule Web Mapping Portal
USGS Topo
TerraServer – US
www.pitrule.source3.com
