

District I
1625 N French Dr., Hobbs, NM 88240
District II
1301 W Grand Avenue, Artesia, NM 88210
District III
1000 Rio Brazos Road, Aztec, NM 87410
District IV
1220 S St Francis Dr., Santa Fe, NM 87505

State of New Mexico
Energy Minerals and Natural Resources
Department
Oil Conservation Division
1220 South St. Francis Dr.
Santa Fe, NM 87505

Form C-144
July 21, 2008

For temporary pits, closed-loop systems, and below-grade tanks, submit to the appropriate NMOCD District Office.
For permanent pits and exceptions submit to the Santa Fe Environmental Bureau office and provide a copy to the appropriate NMOCD District Office.

4671

**Pit, Closed-Loop System, Below-Grade Tank, or
Proposed Alternative Method Permit or Closure Plan Application**

- Type of action: ☐ Permit of a pit, closed-loop system, below-grade tank, or proposed alternative method
☐ Closure of a pit, closed-loop system, below-grade tank, or proposed alternative method
☒ Modification to an existing permit
☐ Closure plan only submitted for an existing permitted or non-permitted pit, closed-loop system, below-grade tank, or proposed alternative method

Instructions: Please submit one application (Form C-144) per individual pit, closed-loop system, below-grade tank or alternative request

Please be advised that approval of this request does not relieve the operator of liability should operations result in pollution of surface water, ground water or the environment. Nor does approval relieve the operator of its responsibility to comply with any other applicable governmental authority's rules, regulations or ordinances.

1.
Operator: EnerVest Operating, LLC OGRID #: 143199
Address: 1001 Fannin St. Ste 800 Houston, Texas 77002
Facility or well name: Jicarilla Contract 155 #28
API Number: 30-039-22527 OCD Permit Number: 1044
U/L or Qtr/Qtr D Section 31 Township 26N Range 05W County: Rio Arriba
Center of Proposed Design: Latitude 36.44758 Longitude -107.40695 NAD: ☐ 1927 ☒ 1983
Surface Owner: ☐ Federal ☐ State ☐ Private ☒ Tribal Trust or Indian Allotment

2.
☐ **Pit:** Subsection F or G of 19.15.17.11 NMAC
Temporary: ☐ Drilling ☐ Workover
☐ Permanent ☐ Emergency ☐ Cavitation ☐ P&A
☐ Lined ☐ Unlined Liner type: Thickness _____ mil ☐ LLDPE ☐ HDPE ☐ PVC ☐ Other _____
☐ String-Reinforced
Liner Seams: ☐ Welded ☐ Factory ☐ Other _____ Volume: _____ bbl Dimensions: L _____ x W _____ x D _____

RCVD DEC 28 '09
OIL CONS. DIV.
DIST. 3

3.
☐ **Closed-loop System:** Subsection H of 19.15.17.11 NMAC
Type of Operation: ☐ P&A ☐ Drilling a new well ☐ Workover or Drilling (Applies to activities which require prior approval of a permit or notice of intent)
☐ Drying Pad ☐ Above Ground Steel Tanks ☐ Haul-off Bins ☐ Other _____
☐ Lined ☐ Unlined Liner type: Thickness _____ mil ☐ LLDPE ☐ HDPE ☐ PVC ☐ Other _____
Liner Seams: ☐ Welded ☐ Factory ☐ Other _____

4.
☒ **Below-grade tank:** Subsection I of 19.15.17.11 NMAC
Volume: 95 bbl Type of fluid: Primarily produced water w/ compressor skid precipitation & incidental lubricating oil
Tank Construction material: Steel w/ expanded metal cover
☐ Secondary containment with leak detection ☐ Visible sidewalls, liner, 6-inch lift and automatic overflow shut-off
☐ Visible sidewalls and liner ☒ Visible sidewalls only ☐ Other _____
Liner type: Thickness _____ mil ☐ HDPE ☐ PVC ☐ Other _____

5.
☐ **Alternative Method:**
Submittal of an exception request is required. Exceptions must be submitted to the Santa Fe Environmental Bureau office for consideration of approval.

6.
Fencing: Subsection D of 19.15.17.11 NMAC (*Applies to permanent pits, temporary pits, and below-grade tanks*)
☐ Chain link, six feet in height, two strands of barbed wire at top (*Required if located within 1000 feet of a permanent residence, school, hospital, institution or church*)
☐ Four foot height, four strands of barbed wire evenly spaced between one and four feet
☒ Alternate. Please specify 42" Hog-wire fence with 2 strands barbed-wire on top _____

7.
Netting: Subsection E of 19.15.17.11 NMAC (*Applies to permanent pits and permanent open top tanks*)
☒ Screen ☐ Netting ☐ Other _____
☐ Monthly inspections (If netting or screening is not physically feasible)

8.
Signs: Subsection C of 19.15.17.11 NMAC
☐ 12"x 24", 2" lettering, providing Operator's name, site location, and emergency telephone numbers
☒ Signed in compliance with 19.15.3.103 NMAC

9.
Administrative Approvals and Exceptions:
Justifications and/or demonstrations of equivalency are required. Please refer to 19.15.17 NMAC for guidance.
Please check a box if one or more of the following is requested, if not leave blank:
☒ Administrative approval(s): Requests must be submitted to the appropriate division district or the Santa Fe Environmental Bureau office for consideration of approval.
☐ Exception(s): Requests must be submitted to the Santa Fe Environmental Bureau office for consideration of approval.

10.
Siting Criteria (regarding permitting): 19.15.17.10 NMAC
Instructions: The applicant must demonstrate compliance for each siting criteria below in the application. Recommendations of acceptable source material are provided below. Requests regarding changes to certain siting criteria may require administrative approval from the appropriate district office or may be considered an exception which must be submitted to the Santa Fe Environmental Bureau office for consideration of approval. Applicant must attach justification for request. Please refer to 19.15.17.10 NMAC for guidance. Siting criteria does not apply to drying pads or above-grade tanks associated with a closed-loop system.

Ground water is less than 50 feet below the bottom of the temporary pit, permanent pit, or below-grade tank. - NM Office of the State Engineer - iWATERS database search; USGS; Data obtained from nearby wells	<input type="checkbox"/> Yes <input checked="" type="checkbox"/> No
Within 300 feet of a continuously flowing watercourse, or 200 feet of any other significant watercourse or lakebed, sinkhole, or playa lake (measured from the ordinary high-water mark). - Topographic map; Visual inspection (certification) of the proposed site	<input type="checkbox"/> Yes <input checked="" type="checkbox"/> No
Within 300 feet from a permanent residence, school, hospital, institution, or church in existence at the time of initial application. (Applies to temporary, emergency, or cavitation pits and below-grade tanks) - Visual inspection (certification) of the proposed site; Aerial photo; Satellite image	<input type="checkbox"/> Yes <input checked="" type="checkbox"/> No <input type="checkbox"/> NA
Within 1000 feet from a permanent residence, school, hospital, institution, or church in existence at the time of initial application. (Applies to permanent pits) - Visual inspection (certification) of the proposed site; Aerial photo; Satellite image	<input type="checkbox"/> Yes <input checked="" type="checkbox"/> No <input type="checkbox"/> NA
Within 500 horizontal feet of a private, domestic fresh water well or spring that less than five households use for domestic or stock watering purposes, or within 1000 horizontal feet of any other fresh water well or spring, in existence at the time of initial application. - NM Office of the State Engineer - iWATERS database search; Visual inspection (certification) of the proposed site	<input type="checkbox"/> Yes <input checked="" type="checkbox"/> No
Within incorporated municipal boundaries or within a defined municipal fresh water well field covered under a municipal ordinance adopted pursuant to NMSA 1978, Section 3-27-3, as amended. - Written confirmation or verification from the municipality; Written approval obtained from the municipality	<input type="checkbox"/> Yes <input checked="" type="checkbox"/> No
Within 500 feet of a wetland. - US Fish and Wildlife Wetland Identification map; Topographic map; Visual inspection (certification) of the proposed site	<input type="checkbox"/> Yes <input checked="" type="checkbox"/> No
Within the area overlying a subsurface mine. - Written confirmation or verification or map from the NM EMNRD-Mining and Mineral Division	<input type="checkbox"/> Yes <input checked="" type="checkbox"/> No
Within an unstable area. - Engineering measures incorporated into the design; NM Bureau of Geology & Mineral Resources; USGS; NM Geological Society; Topographic map	<input type="checkbox"/> Yes <input checked="" type="checkbox"/> No
Within a 100-year floodplain. - FEMA map	<input type="checkbox"/> Yes <input checked="" type="checkbox"/> No

11.

Temporary Pits, Emergency Pits, and Below-grade Tanks Permit Application Attachment Checklist: Subsection B of 19.15.17.9 NMAC**Instructions:** Each of the following items must be attached to the application. Please indicate, by a check mark in the box, that the documents are attached.

- ☒ Hydrogeologic Report (Below-grade Tanks) - based upon the requirements of Paragraph (4) of Subsection B of 19.15.17.9 NMAC
- ☐ Hydrogeologic Data (Temporary and Emergency Pits) - based upon the requirements of Paragraph (2) of Subsection B of 19.15.17.9 NMAC
- ☒ Siting Criteria Compliance Demonstrations - based upon the appropriate requirements of 19.15.17.10 NMAC
- ☒ Design Plan - based upon the appropriate requirements of 19.15.17.11 NMAC
- ☒ Operating and Maintenance Plan - based upon the appropriate requirements of 19.15.17.12 NMAC
- ☒ Closure Plan (Please complete Boxes 14 through 18, if applicable) - based upon the appropriate requirements of Subsection C of 19.15.17.9 NMAC and 19.15.17.13 NMAC

☐ Previously Approved Design (attach copy of design) API Number: _____ or Permit Number: _____

12.

Closed-loop Systems Permit Application Attachment Checklist: Subsection B of 19.15.17.9 NMAC**Instructions:** Each of the following items must be attached to the application. Please indicate, by a check mark in the box, that the documents are attached.

- ☐ Geologic and Hydrogeologic Data (only for on-site closure) - based upon the requirements of Paragraph (3) of Subsection B of 19.15.17.9
- ☐ Siting Criteria Compliance Demonstrations (only for on-site closure) - based upon the appropriate requirements of 19.15.17.10 NMAC
- ☐ Design Plan - based upon the appropriate requirements of 19.15.17.11 NMAC
- ☐ Operating and Maintenance Plan - based upon the appropriate requirements of 19.15.17.12 NMAC
- ☐ Closure Plan (Please complete Boxes 14 through 18, if applicable) - based upon the appropriate requirements of Subsection C of 19.15.17.9 NMAC and 19.15.17.13 NMAC

☐ Previously Approved Design (attach copy of design) API Number: _____

☐ Previously Approved Operating and Maintenance Plan API Number: _____ (Applies only to closed-loop system that use above ground steel tanks or haul-off bins and propose to implement waste removal for closure)

13.

Permanent Pits Permit Application Checklist: Subsection B of 19.15.17.9 NMAC**Instructions:** Each of the following items must be attached to the application. Please indicate, by a check mark in the box, that the documents are attached.

- ☐ Hydrogeologic Report - based upon the requirements of Paragraph (1) of Subsection B of 19.15.17.9 NMAC
- ☐ Siting Criteria Compliance Demonstrations - based upon the appropriate requirements of 19.15.17.10 NMAC
- ☐ Climatological Factors Assessment
- ☐ Certified Engineering Design Plans - based upon the appropriate requirements of 19.15.17.11 NMAC
- ☐ Dike Protection and Structural Integrity Design - based upon the appropriate requirements of 19.15.17.11 NMAC
- ☐ Leak Detection Design - based upon the appropriate requirements of 19.15.17.11 NMAC
- ☐ Liner Specifications and Compatibility Assessment - based upon the appropriate requirements of 19.15.17.11 NMAC
- ☐ Quality Control/Quality Assurance Construction and Installation Plan
- ☐ Operating and Maintenance Plan - based upon the appropriate requirements of 19.15.17.12 NMAC
- ☐ Freeboard and Overtopping Prevention Plan - based upon the appropriate requirements of 19.15.17.11 NMAC
- ☐ Nuisance or Hazardous Odors, including H₂S, Prevention Plan
- ☐ Emergency Response Plan
- ☐ Oil Field Waste Stream Characterization
- ☐ Monitoring and Inspection Plan
- ☐ Erosion Control Plan
- ☐ Closure Plan - based upon the appropriate requirements of Subsection C of 19.15.17.9 NMAC and 19.15.17.13 NMAC

14.

Proposed Closure: 19.15.17.13 NMAC**Instructions:** Please complete the applicable boxes, Boxes 14 through 18, in regards to the proposed closure plan.

Type: ☐ Drilling ☐ Workover ☐ Emergency ☐ Cavitation ☐ P&A ☐ Permanent Pit ☒ Below-grade Tank ☐ Closed-loop System

☐ Alternative

Proposed Closure Method: ☒ Waste Excavation and Removal

☐ Waste Removal (Closed-loop systems only)

☐ On-site Closure Method (Only for temporary pits and closed-loop systems)

☐ In-place Burial ☐ On-site Trench Burial

☐ Alternative Closure Method (Exceptions must be submitted to the Santa Fe Environmental Bureau for consideration)

15.

Waste Excavation and Removal Closure Plan Checklist: (19.15.17.13 NMAC) **Instructions:** Each of the following items must be attached to the closure plan. Please indicate, by a check mark in the box, that the documents are attached.

- ☒ Protocols and Procedures - based upon the appropriate requirements of 19.15.17.13 NMAC
- ☒ Confirmation Sampling Plan (if applicable) - based upon the appropriate requirements of Subsection F of 19.15.17.13 NMAC
- ☒ Disposal Facility Name and Permit Number (for liquids, drilling fluids and drill cuttings)
- ☒ Soil Backfill and Cover Design Specifications - based upon the appropriate requirements of Subsection H of 19.15.17.13 NMAC
- ☒ Re-vegetation Plan - based upon the appropriate requirements of Subsection I of 19.15.17.13 NMAC
- ☒ Site Reclamation Plan - based upon the appropriate requirements of Subsection G of 19.15.17.13 NMAC

16.

Waste Removal Closure For Closed-loop Systems That Utilize Above Ground Steel Tanks or Haul-off Bins Only: (19.15.17.13.D NMAC)

Instructions: Please identify the facility or facilities for the disposal of liquids, drilling fluids and drill cuttings. Use attachment if more than two facilities are required.

Disposal Facility Name: _____ Disposal Facility Permit Number: _____

Disposal Facility Name: _____ Disposal Facility Permit Number: _____

Will any of the proposed closed-loop system operations and associated activities occur on or in areas that *will not* be used for future service and operations?

☐ Yes (If yes, please provide the information below) ☐ No

Required for impacted areas which will not be used for future service and operations:

☐ Soil Backfill and Cover Design Specifications - based upon the appropriate requirements of Subsection H of 19.15.17.13 NMAC

☐ Re-vegetation Plan - based upon the appropriate requirements of Subsection I of 19.15.17.13 NMAC

☐ Site Reclamation Plan - based upon the appropriate requirements of Subsection G of 19.15.17.13 NMAC

17.

Siting Criteria (regarding on-site closure methods only): 19.15.17.10 NMAC

Instructions: Each siting criteria requires a demonstration of compliance in the closure plan. Recommendations of acceptable source material are provided below. Requests regarding changes to certain siting criteria may require administrative approval from the appropriate district office or may be considered an exception which must be submitted to the Santa Fe Environmental Bureau office for consideration of approval. Justifications and/or demonstrations of equivalency are required. Please refer to 19.15.17.10 NMAC for guidance.

Ground water is less than 50 feet below the bottom of the buried waste.

- NM Office of the State Engineer - iWATERS database search; USGS; Data obtained from nearby wells

☐ Yes ☐ No

☐ NA

Ground water is between 50 and 100 feet below the bottom of the buried waste

- NM Office of the State Engineer - iWATERS database search; USGS; Data obtained from nearby wells

☐ Yes ☐ No

☐ NA

Ground water is more than 100 feet below the bottom of the buried waste.

- NM Office of the State Engineer - iWATERS database search; USGS; Data obtained from nearby wells

☐ Yes ☐ No

☐ NA

Within 300 feet of a continuously flowing watercourse, or 200 feet of any other significant watercourse or lakebed, sinkhole, or playa lake (measured from the ordinary high-water mark).

- Topographic map; Visual inspection (certification) of the proposed site

☐ Yes ☐ No

Within 300 feet from a permanent residence, school, hospital, institution, or church in existence at the time of initial application.

- Visual inspection (certification) of the proposed site; Aerial photo; Satellite image

☐ Yes ☐ No

Within 500 horizontal feet of a private, domestic fresh water well or spring that less than five households use for domestic or stock watering purposes, or within 1000 horizontal feet of any other fresh water well or spring, in existence at the time of initial application.

- NM Office of the State Engineer - iWATERS database; Visual inspection (certification) of the proposed site

☐ Yes ☐ No

Within incorporated municipal boundaries or within a defined municipal fresh water well field covered under a municipal ordinance adopted pursuant to NMSA 1978, Section 3-27-3, as amended.

- Written confirmation or verification from the municipality; Written approval obtained from the municipality

☐ Yes ☐ No

Within 500 feet of a wetland.

- US Fish and Wildlife Wetland Identification map; Topographic map; Visual inspection (certification) of the proposed site

☐ Yes ☐ No

Within the area overlying a subsurface mine.

- Written confirmation or verification or map from the NM EMNRD-Mining and Mineral Division

☐ Yes ☐ No

Within an unstable area.

- Engineering measures incorporated into the design; NM Bureau of Geology & Mineral Resources; USGS; NM Geological Society; Topographic map

☐ Yes ☐ No

Within a 100-year floodplain.

- FEMA map

☐ Yes ☐ No

18.

On-Site Closure Plan Checklist: (19.15.17.13 NMAC) **Instructions:** Each of the following items must be attached to the closure plan. Please indicate, by a check mark in the box, that the documents are attached.

☐ Siting Criteria Compliance Demonstrations - based upon the appropriate requirements of 19.15.17.10 NMAC

☐ Proof of Surface Owner Notice - based upon the appropriate requirements of Subsection F of 19.15.17.13 NMAC

☐ Construction/Design Plan of Burial Trench (if applicable) based upon the appropriate requirements of 19.15.17.11 NMAC

☐ Construction/Design Plan of Temporary Pit (for in-place burial of a drying pad) - based upon the appropriate requirements of 19.15.17.11 NMAC

☐ Protocols and Procedures - based upon the appropriate requirements of 19.15.17.13 NMAC

☐ Confirmation Sampling Plan (if applicable) - based upon the appropriate requirements of Subsection F of 19.15.17.13 NMAC

☐ Waste Material Sampling Plan - based upon the appropriate requirements of Subsection F of 19.15.17.13 NMAC

☐ Disposal Facility Name and Permit Number (for liquids, drilling fluids and drill cuttings or in case on-site closure standards cannot be achieved)

☐ Soil Cover Design - based upon the appropriate requirements of Subsection H of 19.15.17.13 NMAC

☐ Re-vegetation Plan - based upon the appropriate requirements of Subsection I of 19.15.17.13 NMAC

☐ Site Reclamation Plan - based upon the appropriate requirements of Subsection G of 19.15.17.13 NMAC

19.

Operator Application Certification:

I hereby certify that the information submitted with this application is true, accurate and complete to the best of my knowledge and belief.

Name (Print): Ronnie L. Young Title: Compliance Supervisor

Signature: Ronnie L. Young Date: 12.23.09

e-mail address: ryoung@enervest.net Telephone: 713-495-6530

20.

OCD Approval: ☒ Permit Application (including closure plan) ☐ Closure Plan (only) ☐ OCD Conditions (see attachment)

OCD Representative Signature: Donald D. Kelly Approval Date: 5/16/2012
 Deputy Oil & Gas Inspector,
 Title: District #8 OCD Permit Number: _____

21.

Closure Report (required within 60 days of closure completion): Subsection K of 19.15.17.13 NMAC

Instructions: Operators are required to obtain an approved closure plan prior to implementing any closure activities and submitting the closure report. The closure report is required to be submitted to the division within 60 days of the completion of the closure activities. Please do not complete this section of the form until an approved closure plan has been obtained and the closure activities have been completed.

☐ Closure Completion Date: _____

22.

Closure Method:

☐ Waste Excavation and Removal ☐ On-Site Closure Method ☐ Alternative Closure Method ☐ Waste Removal (Closed-loop systems only)
☐ If different from approved plan, please explain.

23.

Closure Report Regarding Waste Removal Closure For Closed-loop Systems That Utilize Above Ground Steel Tanks or Haul-off Bins Only:

Instructions: Please identify the facility or facilities for where the liquids, drilling fluids and drill cuttings were disposed. Use attachment if more than two facilities were utilized.

Disposal Facility Name: _____ Disposal Facility Permit Number: _____

Disposal Facility Name: _____ Disposal Facility Permit Number: _____

Were the closed-loop system operations and associated activities performed on or in areas that *will not* be used for future service and operations?

☐ Yes (If yes, please demonstrate compliance to the items below) ☐ No

Required for impacted areas which will not be used for future service and operations:

- ☐ Site Reclamation (Photo Documentation)
☐ Soil Backfilling and Cover Installation
☐ Re-vegetation Application Rates and Seeding Technique

24.

Closure Report Attachment Checklist: *Instructions: Each of the following items must be attached to the closure report. Please indicate, by a check mark in the box, that the documents are attached.*

- ☐ Proof of Closure Notice (surface owner and division)
☐ Proof of Deed Notice (required for on-site closure)
☐ Plot Plan (for on-site closures and temporary pits)
☐ Confirmation Sampling Analytical Results (if applicable)
☐ Waste Material Sampling Analytical Results (required for on-site closure)
☐ Disposal Facility Name and Permit Number
☐ Soil Backfilling and Cover Installation
☐ Re-vegetation Application Rates and Seeding Technique
☐ Site Reclamation (Photo Documentation)

On-site Closure Location: Latitude _____ Longitude _____ NAD: ☐ 1927 ☐ 1983

25.

Operator Closure Certification:

I hereby certify that the information and attachments submitted with this closure report is true, accurate and complete to the best of my knowledge and belief. I also certify that the closure complies with all applicable closure requirements and conditions specified in the approved closure plan.

Name (Print): _____ Title: _____

Signature: _____ Date: _____

e-mail address: _____ Telephone: _____

EnerVest Operating, LLC (EV)

**BELOW-GRADE TANK
DESIGN AND CONSTRUCTION SPECIFICATIONS**

Rule 19.15.17.11

- C. Enervest Operating is the official operator of record for all wells which have below-grade tanks to be addressed in this specification. All below-grade tanks are located on these leases and will be in full compliance with 19.15.16.8 regarding signage.
- D. EV will ensure a fence shall be constructed and maintained in good repair with gates that are closed and locked when responsible personnel are not on site. EV shall insure that all gates are closed and locked when responsible personnel are not on-site.

If the below-grade tank is located within 1,000 feet of a permanent residence, school, hospital, institution or church, the fence shall be a chain link security fence at least 6 feet in height with at least two strands of barbed wire on top.

If the below-grade tank is not within 1,000 feet of the above mentioned structures, the fence shall constructed to exclude livestock with at least four strands of barbed wire evenly spaced between one foot from the ground and four foot above the ground.

EV is requesting administrative approval to use a 42" Hog wire fence with 2 strands barbed-wire on top in lieu of the required four strand barbed wire fence. This will be supported with iron posting at the corners and 10 – 12 feet apart. EV believes this will offer better protection for wildlife in these tank areas.

- E. EV shall ensure an open top tank is screened with expanded 3/16" metal screen or a fully closed top, both of which are welded on the top of the tank. Such screening will be painted to blend with the below-grade tank. EV believes this is sufficient strength to protect migratory birds or other wildlife.
- I. EV will ensure all below-grade tanks will be constructed of 3/16" steel, resistant to the tank's contents and to damage from sunlight. Based on water production and road condition for access during the winter months there are a choice of three different sizes which could be used:

CAPACITY	DIAMETER	HEIGHT
125 bbl	15'	4'
120 bbl	12'	6'
100 bbl	12'	5'

This tank will contain liquids and should prevent contamination of fresh water to protect the public health and environment.

The below-grade system will include a excavated area for the tanks which will be dependent upon the size of the tank used:

- 18' x 18' x 4' High Square excavated area
- 18' Diameter x 4' High Circular excavated area
- 18' Diameter x 5' High Circular excavated area

Most of our below-grade tank systems were installed prior to June 16, 2008 and are 16.5' x 16.5' x 4' square excavated area design. As tanks are retro fitted, this will be changed to one of the above. The particular area and well conditions will determine which design best for that particular well. EV will ensure that there will be room to walk around the tank inside the containment area which will better enable our field personnel to inspect for damage to liners or incidental leaks. Please refer to tank diagram under Appendix 8 for details.

All excavated areas will be reinforced with metal walls to prevent collapse. There will be sufficient open area on all sides of the tank to witness any incidental release that may occur. Please refer to tank diagram under Appendix 8.

EV will ensure the base of any excavated area containing a below-grade tank will be level and free of rocks, debris, sharp edges or irregularities to prevent punctures, cracks or indentations of the liner or tank bottom.

EV will ensure that any geomembrane liner used shall consist of 30-mil flexible PVC or 60-mil HDPE liner or equivalent liner material. The liner shall be composed of an impervious, synthetic material that is resistant to petroleum hydrocarbons, salt and acidic and alkaline solutions and shall be resistant to ultraviolet light. The liner shall have a hydraulic conductivity no greater than 1×10^{-9} cm/sec. The liner shall be compatible with EPA SW-846 method 9090A. EV will install the liner in such a manner as to divert any possible leak for visual inspection. EV will demonstrate to the OCD that the liner complies with the specifications within Subparagraph (a) of Paragraph (4) of Section I of 19.156.17.11 NMAC and obtain approval from the division prior to the installation of the new design.

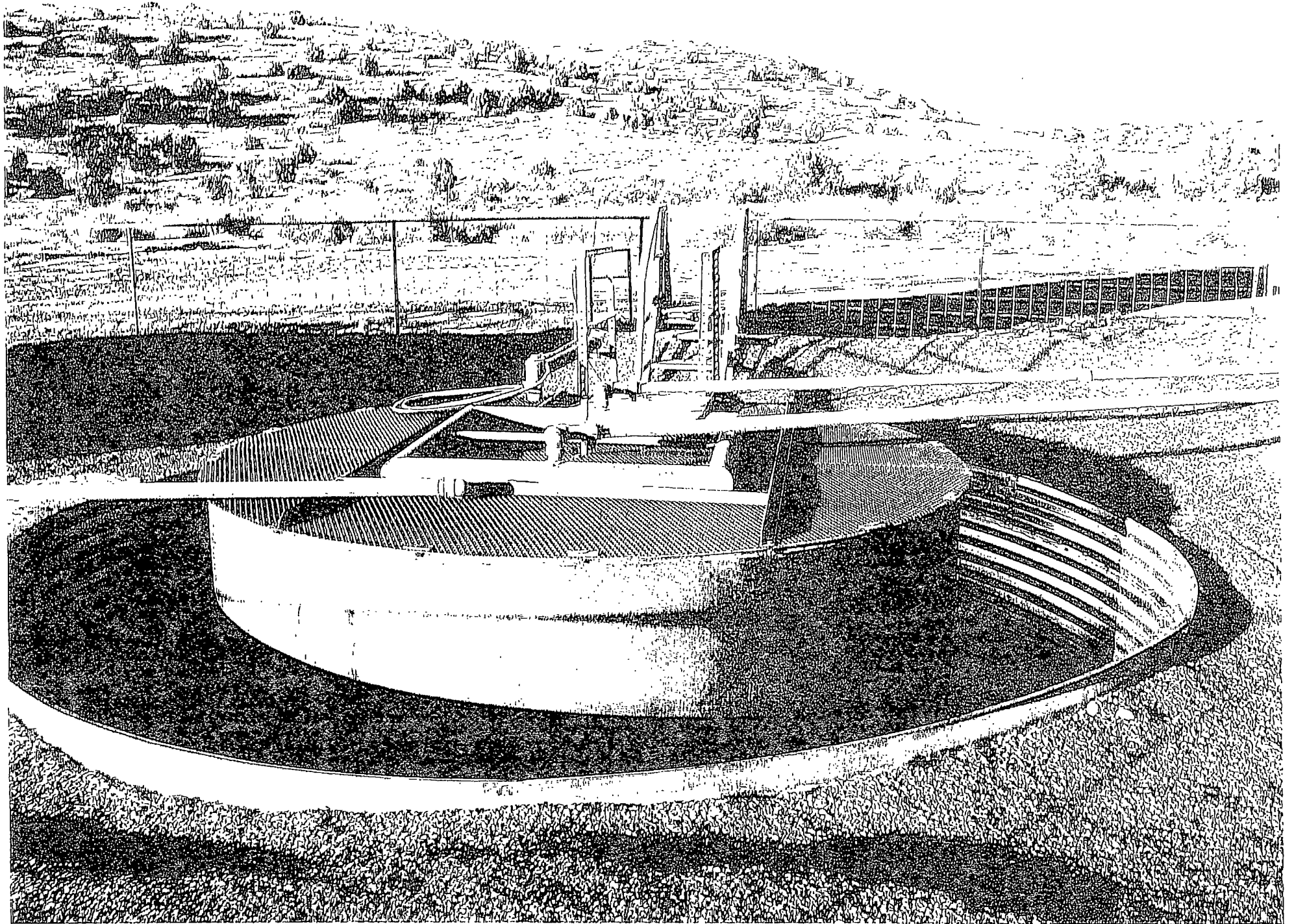
EV will ensure the fluid levels of tanks will be monitored by automatic high level alarms at 24" from the top and shut-off device at 10 1/2 inches from the top of the tank. The tanks will be also equipped with a manual shut-off valve in the event it is needed. Please see design specification sheet of this system in this section. The majority of our below-grade tanks are within the berm around our tank battery and as so are protected from run-on water. Those outside this berm will be protected with an earthen berm which will extend at least 6" above surface ground level to divert run-on around the tank. The side walls of the excavated

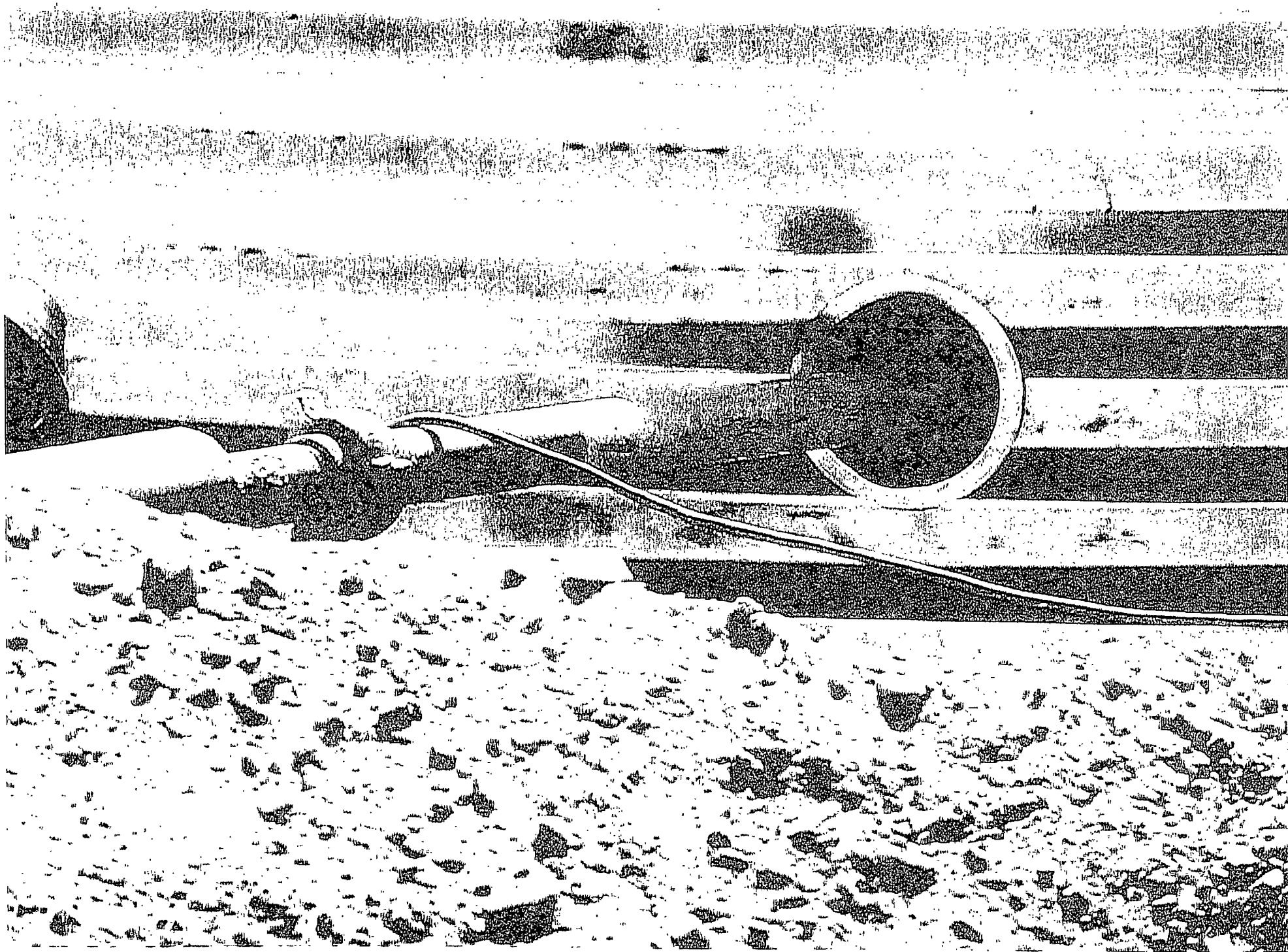
area will extend at least 6" above the ground level to divert run-on water around the tank. Any possible leak will be diverted, on the liner, in such a way can be visually inspected.

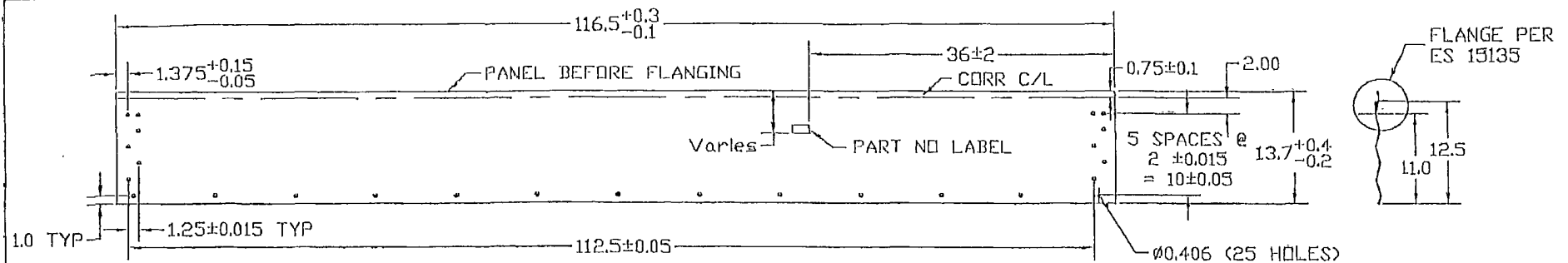
EV tank design will be a single walled tank constructed to ensure that the side walls are open for visual inspection for leaks; the bottom will be elevated six inches above the ground surface and will contain a geomembrane liner, as described above, directly on the ground level of the containment area.

Once a below-grade tank which was installed prior to June 16, 2008 does not demonstrate integrity, EV shall promptly repair or remove that below-grade tank and close the tank or install a below-grade tank that is in full compliance with Paragraph 1 thru 4 of Section I of 19.15.17.11 NMAC. EV shall comply with the operational requirements of 19.15.17.12 NMAC. Please refer to tank diagram under Appendix 8 for details

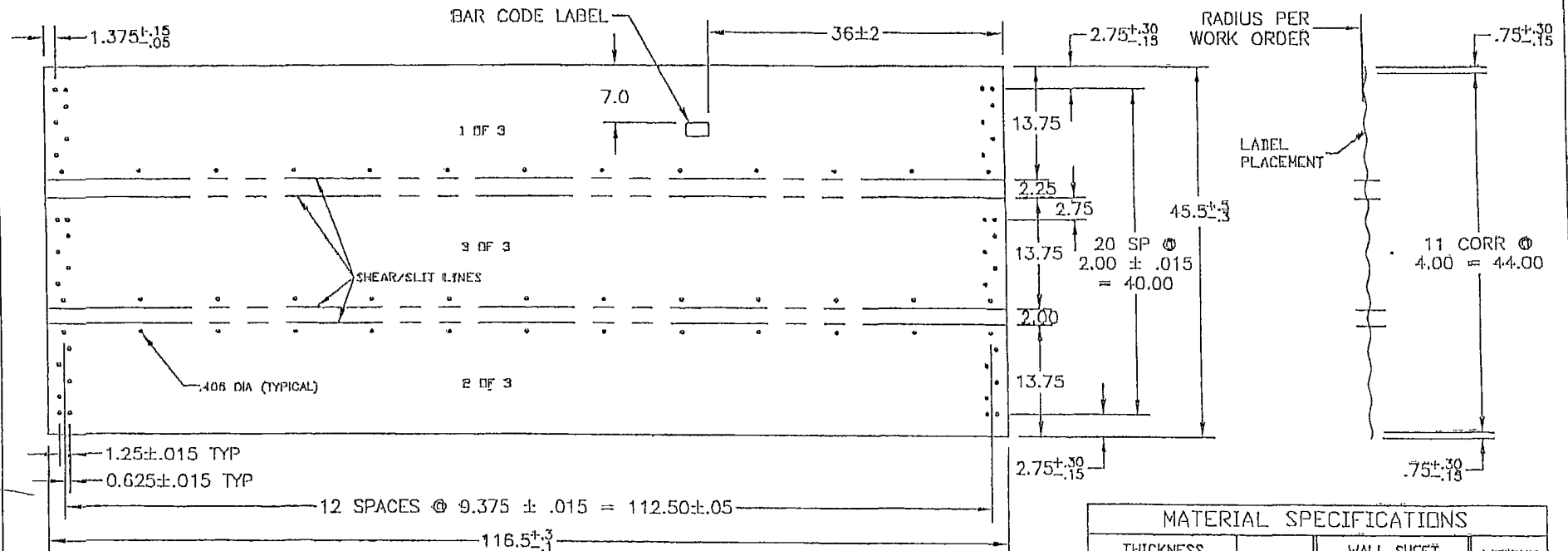
Any single walled below-grade tank installed before June 16, 2008 where any portion of the tank sidewall is below the ground surface and not totally visible shall be closed, retrofited or replaced before June 15, 2013. EV will fully comply with Paragraph 1 thru 4 of Section I of 19.15.17.11 NMAC for all retrofitting or replacement of below-grade tanks.







13 1/2' WALL PANEL LAYOUT BEFORE FLANGING



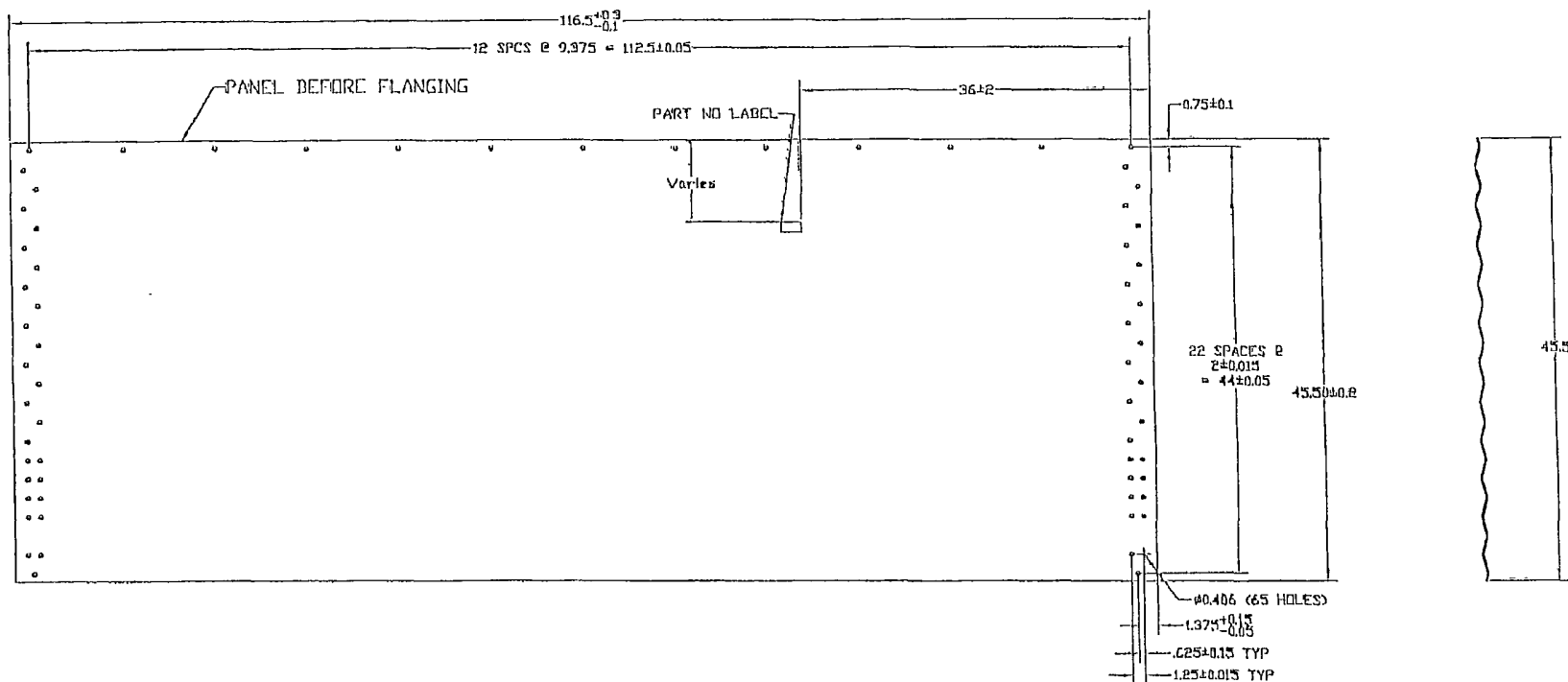
MANUFACTURING VIEW ONLY - TRIPLE PANEL AFTER
CORR & PUNCH, BEFORE SLITTING & FLANGING

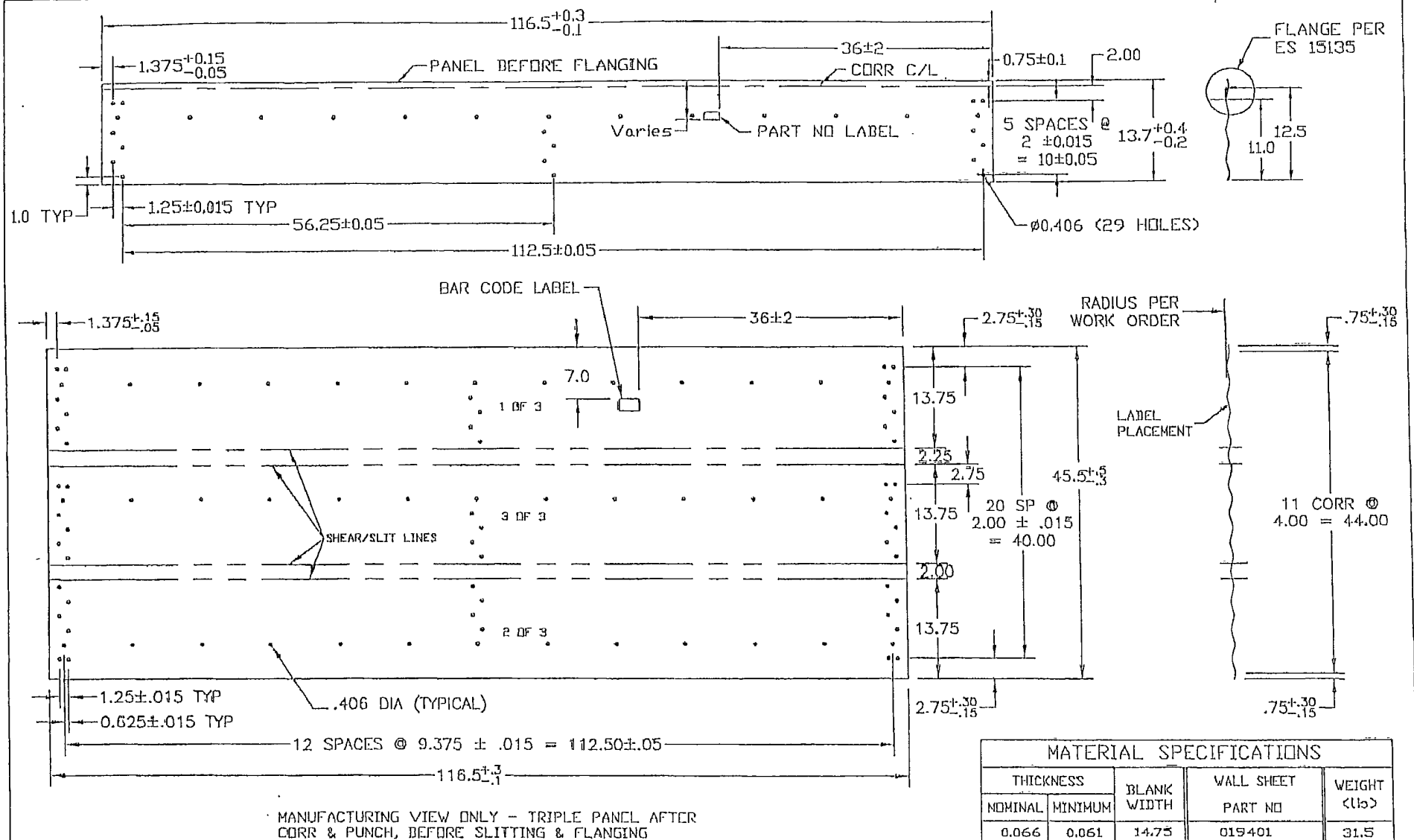
MATERIAL SPECIFICATIONS				
THICKNESS		BLANK WIDTH	WALL SHEET PART NO	WEIGHT (lbs)
NOMINAL	MINIMUM			
0.066	0.061	14.75	CV1357F	31.5

				MATERIAL		BLANK SIZE		WEIGHT (LBS.)	
				SEE CHART - ASTM A653 SS GR50 G115 OIL		46.5x116.5 (3 pcs)		31.5	
				DESIGN	BA	THIS DRAWING IS THE EXCLUSIVE PROPERTY OF VESTEEL AND ALL RIGHTS ARE RESERVED. NO PART OF THIS DRAWING MAY BE USED OR REPRODUCED IN ANY MANNER WHATSOEVER WITHOUT WRITTEN PERMISSION FROM Vesteel Limited		SCALE	LOGATION
				DRAWN	RF			N.T.S.	WPG
				CHECKED	BA	DRAWING TITLE: 13.5' FULL PANEL - 57' ONLY CONTAINMENT RING		E.C.R.	REV. NO.
				APPROVED	DA			A6834	A-2000
				CUSTOMER		PRINTING DATE (CYLID)		SIZE	REV. NO.
								A	O
								ES 15516	

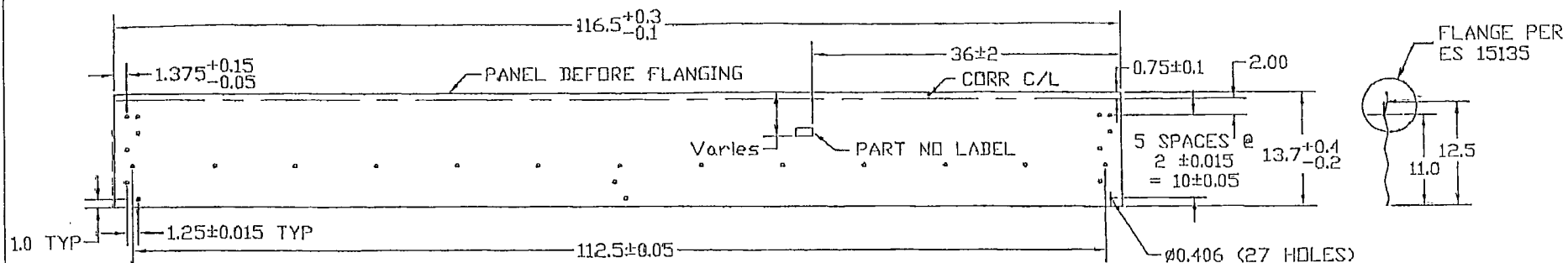
NO	DATE	REVISION	E.C.R.	BY	CH

DIMENSIONS SHOWN ARE IMP	
MM UNITS SHOWN IN BRACKETS	
TOLERANCES (UNLESS OTHERWISE NOTED)	
DIMENSIONS:	
IMPERIAL (in.)	METRIC (mm)
± 0.1	± 2
± 0.03	± 0.8
± 0.010	± 0.25
ANGULAR: ± 1°	

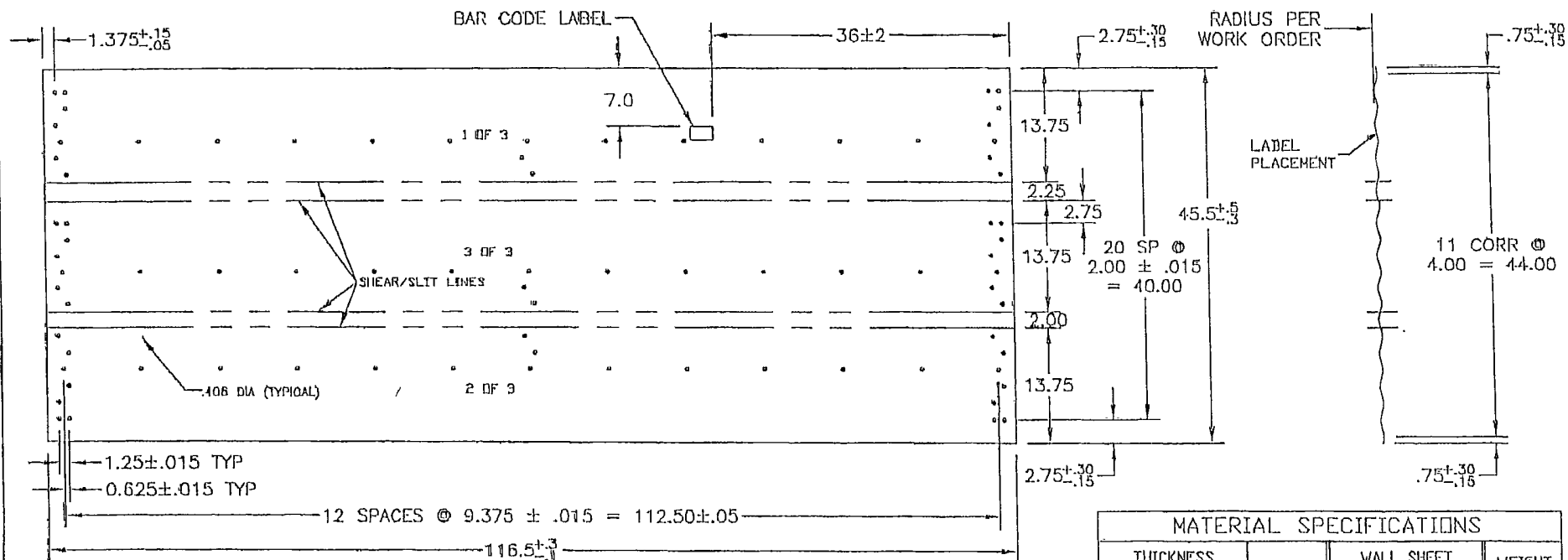




					MATERIAL			BLANK SIZE		WEIGHT (LBS)					
					SEE CHART - ASTM A653 SS GR50 G115 OIL			46.5x116.5 (3 pcs)		31.5					
					DIMENSIONS SHOWN ARE IMP MM UNITS SHOWN IN BRACKETS			THIS DRAWING IS THE EXCLUSIVE PROPERTY OF WESTEEL AND ALL RIGHTS ARE RESERVED NO PART OF THIS DRAWING MAY BE USED OR REPRODUCED IN ANY MANNER WHATSOEVER WITHOUT WRITTEN PERMISSION FROM Westeel Limited		SCALE N.T.S.		DWN. (Y.M.D.) 2004.11.30		LOCATION WPG	
					TOLERANCES (UNLESS OTHERWISE NOTED)			WESTEEL		E.C.R. A6834		E.P. NO. 02-255		DWS TYPE A-2000	
					DIMENSIONS:			DRAWING TITLE		SIZE		DRAWING NO.		REV. NO.	
					IMPERIAL (in.) METRIC (mm)			13.5" FULL PANEL - 4" RISER CONTAINMENT RING		A		019401		O	
					.XX .1 .XX .2 .XX .3 .XX .5			CUSTOMER		PRINTING DATE (Y.M.D.)					
					.XX .1 .XX .2 .XX .3 .XX .5			-		-					
					ANGULAR ± 1°			BA							
NO DATE REVISION E.C.R. BY CH.															



13 1/2' WALL PANEL LAYOUT BEFORE FLANGING



MANUFACTURING VIEW ONLY - TRIPLE PANEL AFTER
CORR & PUNCH, BEFORE SLITTING & FLANGING

MATERIAL SPECIFICATIONS				
THICKNESS		BLANK WIDTH	WALL SHEET PART NO	WEIGHT (LBS)
NOMINAL	MINIMUM			
0.066	0.061	14.75	019419	31.5

MATERIAL					BLANK SIZE		WEIGHT (LBS)	
SEE CHART - ASTM A653 SS GR50 G115 OIL					46.5x116.5 (3 pcs)		31.5	
DESIGN: DA					SCALE: N.T.S.		DWN. (Y.M.D.): 2006.08.08	
DWN. RF					E.C.R.: A6834		LOCATION: WPG	
CHKD. BA					DRAWING TITLE: 9.5" FULL PANEL - 52.5" ONLY		E.P. NO. 02-255	
APPD. BA					CONTAINMENT RING		DWB TYPE: A-2000	
CUSTOMER: -					PRINTING DATE (Y.M.D.): -		SIZE: A	
DRAWING NO. 019419					REV. NO. 0			

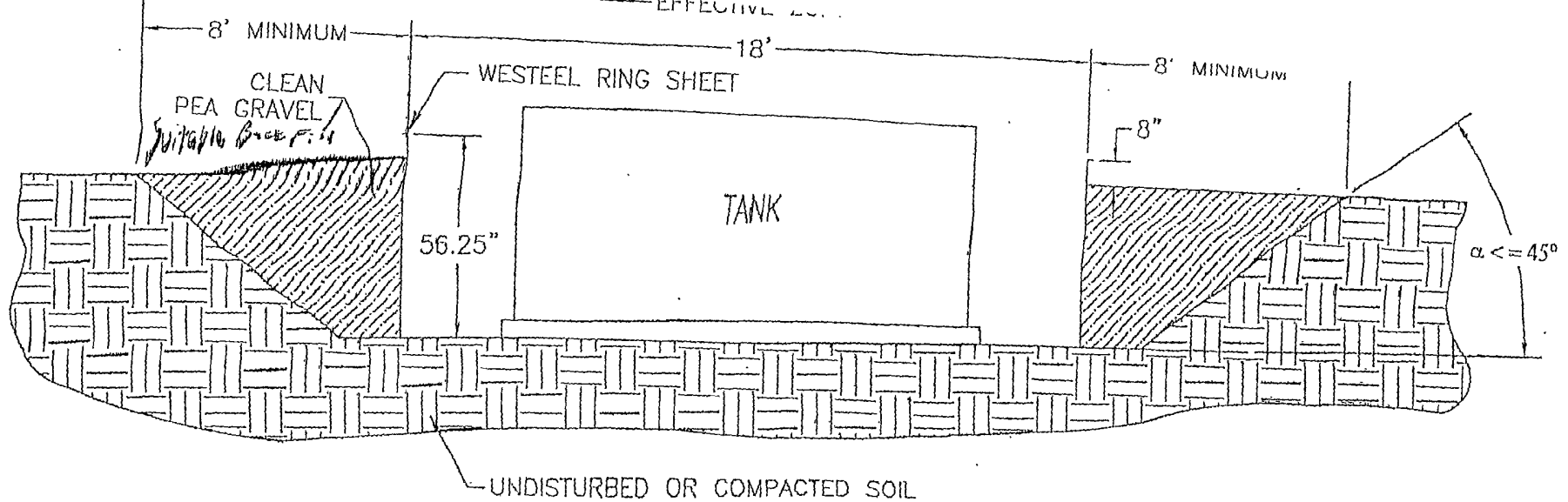
NO	DATE	REVISION	E.C.R.	BY	CH
----	------	----------	--------	----	----

DIMENSIONS SHOWN ARE IN INCHES
MM UNITS SHOWN IN BRACKETS

TOLERANCES
(UNLESS OTHERWISE NOTED)

DIMENSIONS:

IMPERIAL (in.)	METRIC (mm)
.005	.13
.010	.25
.015	.38
.020	.51
.030	.76
.040	1.02
.050	1.27
.060	1.52
.070	1.78
.080	2.03
.090	2.29
.100	2.54
.125	3.18
.150	3.81
.175	4.45
.200	5.08
.250	6.35
.300	7.62
.375	9.53
.500	12.70
.625	15.88
.750	19.05
.875	22.23
1.000	25.40
1.250	31.75
1.500	38.10
1.750	44.45
2.000	50.80
2.250	57.15
2.500	63.50
2.750	69.85
3.000	76.20
3.250	82.55
3.500	88.90
3.750	95.25
4.000	101.60
4.250	107.95
4.500	114.30
4.750	120.65
5.000	127.00
5.250	133.35
5.500	139.70
5.750	146.05
6.000	152.40
6.250	158.75
6.500	165.10
6.750	171.45
7.000	177.80
7.250	184.15
7.500	190.50
7.750	196.85
8.000	203.20
8.250	209.55
8.500	215.90
8.750	222.25
9.000	228.60
9.250	234.95
9.500	241.30
9.750	247.65
10.000	254.00
10.250	260.35
10.500	266.70
10.750	273.05
11.000	279.40
11.250	285.75
11.500	292.10
11.750	298.45
12.000	304.80
12.250	311.15
12.500	317.50
12.750	323.85
13.000	330.20
13.250	336.55
13.500	342.90
13.750	349.25
14.000	355.60
14.250	361.95
14.500	368.30
14.750	374.65
15.000	381.00
15.250	387.35
15.500	393.70
15.750	400.05
16.000	406.40
16.250	412.75
16.500	419.10
16.750	425.45
17.000	431.80
17.250	438.15
17.500	444.50
17.750	450.85
18.000	457.20
18.250	463.55
18.500	469.90
18.750	476.25
19.000	482.60
19.250	488.95
19.500	495.30
19.750	501.65
20.000	508.00
20.250	514.35
20.500	520.70
20.750	527.05
21.000	533.40
21.250	539.75
21.500	546.10
21.750	552.45
22.000	558.80
22.250	565.15
22.500	571.50
22.750	577.85
23.000	584.20
23.250	590.55
23.500	596.90
23.750	603.25
24.000	609.60
24.250	615.95
24.500	622.30
24.750	628.65
25.000	635.00
25.250	641.35
25.500	647.70
25.750	654.05
26.000	660.40
26.250	666.75
26.500	673.10
26.750	679.45
27.000	685.80
27.250	692.15
27.500	698.50
27.750	704.85
28.000	711.20
28.250	717.55
28.500	723.90
28.750	730.25
29.000	736.60
29.250	742.95
29.500	749.30
29.750	755.65
30.000	762.00
30.250	768.35
30.500	774.70
30.750	781.05
31.000	787.40
31.250	793.75
31.500	800.10
31.750	806.45
32.000	812.80
32.250	819.15
32.500	825.50
32.750	831.85
33.000	838.20
33.250	844.55
33.500	850.90
33.750	857.25
34.000	863.60
34.250	869.95
34.500	876.30
34.750	882.65
35.000	889.00
35.250	895.35
35.500	901.70
35.750	908.05
36.000	914.40
36.250	920.75
36.500	927.10
36.750	933.45
37.000	939.80
37.250	946.15
37.500	952.50
37.750	958.85
38.000	965.20
38.250	971.55
38.500	977.90
38.750	984.25
39.000	990.60
39.250	996.95
39.500	1003.30
39.750	1009.65
40.000	1016.00
40.250	1022.35
40.500	1028.70
40.750	1035.05
41.000	1041.40
41.250	1047.75
41.500	1054.10
41.750	1060.45
42.000	1066.80
42.250	1073.15
42.500	1079.50
42.750	1085.85
43.000	1092.20
43.250	1098.55
43.500	1104.90
43.750	1111.25
44.000	1117.60
44.250	1123.95
44.500	1130.30
44.750	1136.65
45.000	1143.00
45.250	1149.35
45.500	1155.70
45.750	1162.05
46.000	1168.40
46.250	1174.75
46.500	1181.10
46.750	1187.45
47.000	1193.80
47.250	1200.15
47.500	1206.50
47.750	1212.85
48.000	1219.20
48.250	1225.55
48.500	1231.90
48.750	1238.25
49.000	1244.60
49.250	1250.95
49.500	1257.30
49.750	1263.65
50.000	1270.00
50.250	1276.35
50.500	1282.70
50.750	1289.05
51.000	1295.40
51.250	1301.75
51.500	1308.10
51.750	1314.45
52.000	1320.80
52.250	1327.15
52.500	1333.50
52.750	1339.85
53.000	1346.20
53.250	1352.55
53.500	1358.90
53.750	1365.25
54.000	1371.60
54.250	1377.95
54.500	1384.30
54.750	1390.65
55.000	1397.00
55.250	1403.35
55.500	1409.70
55.750	1416.05
56.000	1422.40
56.250	1428.75
56.500	1435.10
56.750	1441.45
57.000	1447.80
57.250	1454.15
57.500	1460.50
57.750	1466.85
58.000	1473.20
58.250	1479.55
58.500	1485.90
58.750	1492.25
59.000	1498.60
59.250	1504.95
59.500	1511.30
59.750	1517.65
60.000	1524.00
60.250	1530.35
60.500	1536.70
60.750	1543.05
61.000	1549.40
61.250	1555.75
61.500	1562.10
61.750	1568.45
62.000	1574.80
62.250	1581.15
62.500	1587.50
62.750	1593.85
63.000	1600.20
63.250	1606.55
63.500	1612.90
63.750	1619.25
64.000	1625.60
64.250	1631.95
64.500	1638.30
64.750	1644.65
65.000	1651.00
65.250	1657.35
65.500	1663.70
65.750	1670.05
66.000	1676.40
66.250	1682.75
66.500	1689.10
66.750	1695.45
67.000	1701.80
67.250	1708.15
67.500	1714.50
67.750	1720.85
68.000	1727.20
68.250	1733.55
68.500	1739.90
68.750	1746.25
69.000	1752.60
69.250	1758.95
69.500	1765.30
69.750	1771.65
70.000	1778.00
70.250	1784.35
70.500	1790.70
70.750	1797.05
71.000	1803.40
71.250	1809.75
71.500	1816.10
71.750	1822.45
72.000	1828.80
72.250	1835.15
72.500	1841.50
72.750	1847.85
73.000	1854.20
73.250	1860.55
73.500	1866.90
73.750	1873.25
74.000	1879.60
74.250	1885.95
74.500	1892.30
74.750	1898.65
75.000	1905.00
75.250	1911.35
75.500	1917.70
75.750	1924.05
76.000	1930.40
76.250	1936.75
76.500	1943.10
76.750	1949.45
77.000	1955.80
77.250	1962.15
77.	



INSTALLATION INSTRUCTIONS & SITE REQUIREMENTS

1. EXCAVATE AS PER ABOVE
2. FOR BEST RESULTS, BACKFILL WITH CLEAN PEA GRAVEL (OR EQUIVALENT FREE FLOWING MATERIAL) EVENLY AROUND THE STRUCTURE, TAKING CARE NOT TO FILL IN ANY ONE AREA VERY HIGH RELATIVE TO OTHER AREAS, SO AS TO MAINTAIN THE STRUCTURE AS ROUND. WORKING AROUND THE STRUCTURE IN APPROXIMATELY 6" LIFTS IS RECOMMENDED. (NOTE: ALTERNATIVE MATERIALS CAN BE USED BUT CARE MUST BE TAKEN TO INSURE THAT THE EXTERNAL PRESSURES ACTING ON THE STRUCTURE REMAIN UNIFORM. IF NATIVE SOIL IS USED AS A BACKFILL MATERIAL, IT SHOULD BE UNIFORM IN CONSISTENCY, AND BE FREE OF LARGE ROCKS OR UNBROKEN CLUMPS, WHICH COULD RESULT IN UNEVEN LOADING).
3. THE COMPLETED STRUCTURE SHOULD EXTEND APPROXIMATELY 8" ABOVE GRADE
4. TO INSURE STRUCTURAL INTEGRITY, UNEVEN EXTERNAL WALL PRESSURE IS TO BE AVOIDED. NO VEHICLES OR OTHER SOURCES OF POINT LOADING SHOULD BE PERMITTED WITHIN THE EFFECTIVE ZONE (AS ILLUSTRATED).
5. WESTEEL IS NOT LIABLE FOR ANY DAMAGES OR INJURIES RESULTING FROM ANY FAILURE DUE TO IMPROPER INSTALLATION, IMPROPER SITE CONDITIONS, OR INADEQUATE MAINTENANCE OF THE SITE.

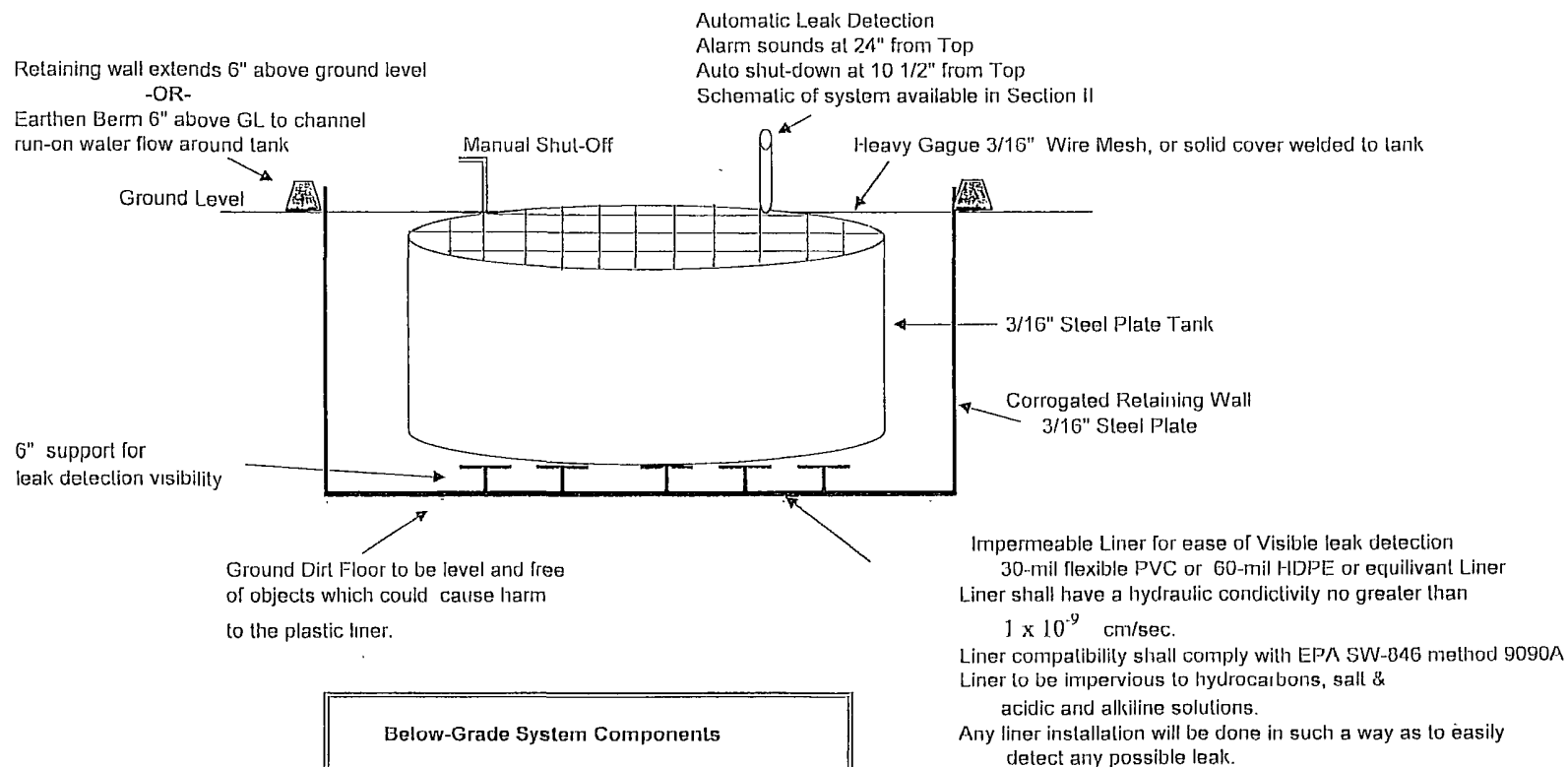
NOTE: THIS SYSTEM IS NOT DESIGNED FOR THE SECONDARY CONTAINMENT OF LIQUIDS, RATHER, TO ALLOW FOR INSPECTION OF THE TANK.



EnerVest Operating, LLC
Western Division

Below-Grade Tank System

Gravity Fed - Produced Water



Below-Grade System Components

Tank Size		Excavation Areas
Capacity	Dia x Height	
125 Bbl	15' x 4'	18' x 18' x 4' Square
120 Bbl	12' x 6'	18' x 4' Circular
100 Bbl	12' x 5'	18' x 5' Circular

Tank size dependent upon water production & road conditions
Excavation Area size dependent upon tank size

EnerVest Operating, LLC (EV)

**BELOW-GRADE TANK
OPERATIONAL REQUIREMENTS**

Rule 19.15.17.12

- A. EV will operate and maintain Below-Grade Tanks to insure the integrity of the below-grade tank, liner, liner system or berms to prevent contamination of fresh water and protect public health and the environment.

EV will not discharge or store any hazardous waste material of any kind in any Below-Grade Tank.

Any penetration of the below-grade below the liquid's surface that may occur, EV shall remove all liquid above the damage or leak line within 48 hours of the discovery. EV shall notify the appropriate district office within 48 hours of the discovery and repair the damage or replace the liner or below-grade tank.

EV will insure the metal retaining walls of the below-grade system around each tank will extend at least 6" above ground level or be equipped with a 6" earthen berm in an effort to divert run-on water around the below-grade system.

- D. EV will insure that a below-grade tank constructed and installed prior to June 16, 2008 that does not meet the requirements of 19.15.17.11 NMAC and does not demonstrate integrity or that the below-grade tank develops any conditions as identified in 19.15.17.12 NMAC shall close the existing below-grade tank pursuant to the closure requirements of 19.15.17.13 NMAC and install a below-grade tank that is in full compliance with our approved design. Please see below-grade system diagram in Appendix 8 for details.

EV will insure all Below-grade tanks will be equipped with automatic high-level alarm which sounds at 24" and than shut off devise to insure that flow will shut off at the freeboard height of 10 1/2 inches.

The majority of our below-grade tanks are within the berm around our tank battery and as so are protected from run-on water. Those outside this berm will be protected with an earthen berm which will extend at least 6" above surface ground level to divert run-on around the tank.

EV will remove any visible or measurable layer of oil from the fluid surface of a below-grade tank.

With any below-grade tank, installed before June 16, 2008, that is retrofitted or replaced with another tank, EV will insure that the soil beneath the removed soil is inspected for wet, discolored, or any other evidence of release, with photographic evidence. EV will report the results of all testing to the division on form C-141 and demonstrate to the division whether the evidence of contamination indicates at an imminent threat to fresh water, public health, safety of the environment exists. If the division determines that the contamination does not pose an imminent threat to fresh water, public health, safety or the environment, EV shall complete the retrofit or the replacement of the below-grade tank as per our approved design program as indicated in Appendix 8. If EV or the division determines that the contamination poses an imminent threat to fresh water, public health, safety or the environment, then EV shall close the existing below-grade tank pursuant to the closure requirements of 19.17.15.13 NMAC prior to initiating the retrofit or replacement.

EnerVest Operating, LLC (EV)

**BELOW-GRADE TANK
CLOSURE REQUIREMENTS**

Rule 19.15.17.13

Before June 15, 2013, EV shall close, retrofit, or replace an existing below-grade tank that has not demonstrated integrity.

EV shall close a below-grade tank within the time periods provided in 19.15.17.13 NMAC, or by an earlier date that the division requires because of imminent danger to fresh water, public health or the environment.

- A. EV shall close an existing below-grade tank that does not meet the requirements of Subsection I, paragraphs (1) through (4), of 19.15.17.11 NMAC if not retrofitted to comply with said requirements prior to any sale or change of operator to 19.15.9.9 NMAC.

Any below-grade tank installed prior to June 16, 2008 that is single walled and where any portion of the tank sidewall is below the ground surface and not visible shall equip or retrofit the below-grade tank to comply with paragraphs (1) through (4) of Subsection I of 19.15.17.11 NMAC, or close it, within 5 years after June 16, 2008.

Within 60 days of cessation of the permitted below-grade tanks operation or as required by Subsection B of 19.15.17.17 NMAC, EV shall close the below-grade tank in accordance with a closure plan that the appropriate division district office approves.

- J. Prior to implementing any closure operations EV shall research county tax records to determine the name and address of the surface owner of the properties involved. EV shall notify this surface owner via Certified U.S. Mail, return receipt requested, of their intent to close said below-grade tank.

Upon determination, EV will notify the appropriate district office prior to any closure operations beginning. Such notification shall be at least 72 hours, via U.S. Mail, prior to beginning work but not more than one week prior to beginning work. Such notice shall contain at a minimum the following:

Operators Name
Unit letter, Section, Township, & Range of well
Well name and well number
API Number of well

- E. .All free standing liquids and sludge will be removed at the start of the below-grade tank closure process from the below-grade tank and disposed of in one of the below division-approved facility as indicated below:

TNT Land Farm	Permit # NM-01-0008	Liquids & Sludge
Environtech Land Farm	Permit # NM-01-0011	Solids
AguaMoss	Permit # 247130	Liquids

EV will obtain prior approval from the division to dispose, recycle, reuse, or reclaim the below-grade tanks and provide documentation of the final disposition of the below-grade tank in the closure report.

Existing liners that are removed as a result of closure will be wiped cleaned and disposed of at a solid waste facility listed below in compliance with Subparagraph (M) of Paragraph (I) of Subsection C 19.15.35.8 NMAC..

San Juan Regional Landfill	Permit # SWM 052426 or
“	Special Waster Permit # SWM052433 “sp”

If there is any on-site equipment associated with a below0grade tank, EV shall remove the equipment, unless the equipment is required for some other purpose .

Upon removal of the below-grade tank, EV will take, at a minimum, a five point composite sample from where the tank was sitting. EV shall collect individual grab samples will be taken from any area that is wet, discolored or showing other evidence of a release. All samples will be analyzed for the following:

Components	Test Method	Limits (mg/Kg)
Benzene	EPA SW-846 8021B or 8260B	0.2
BTEX	EPA SW-846 8021B or 8260B	50
TPH	EPA SW-846 418.1	100
Chlorides	EPA 300.1	250 or background, whichever is greater

EV will insure that the results of all sampling shall be reported to the division on approved form C-141. EV understands that the division may require additional delineation upon review of the results.

If sampling demonstrates that concentrations specified above have NOT been exceeded, or that a release has NOT occurred, EV will backfill the excavation with compacted, non-waste containing, earthen material, construct a division prescribed soil cover, and recontour and re-vegetate the site. The division prescribed soil cover, recontouring, and re-vegetation shall comply with 19.15.17.13.

If EV or the division determines that a release has occurred, EV shall fully comply with 19.15.29 NMAC and 19.15.30 NMAC as appropriate.

- G. Once EV has closed a below-grade tank, we shall reclaim the site to a safe and stable condition that blends with the surrounding undisturbed area. When possible, EV will restore the impacted surface area to the condition that existed prior to oil and gas operations by the placement of soil cover.

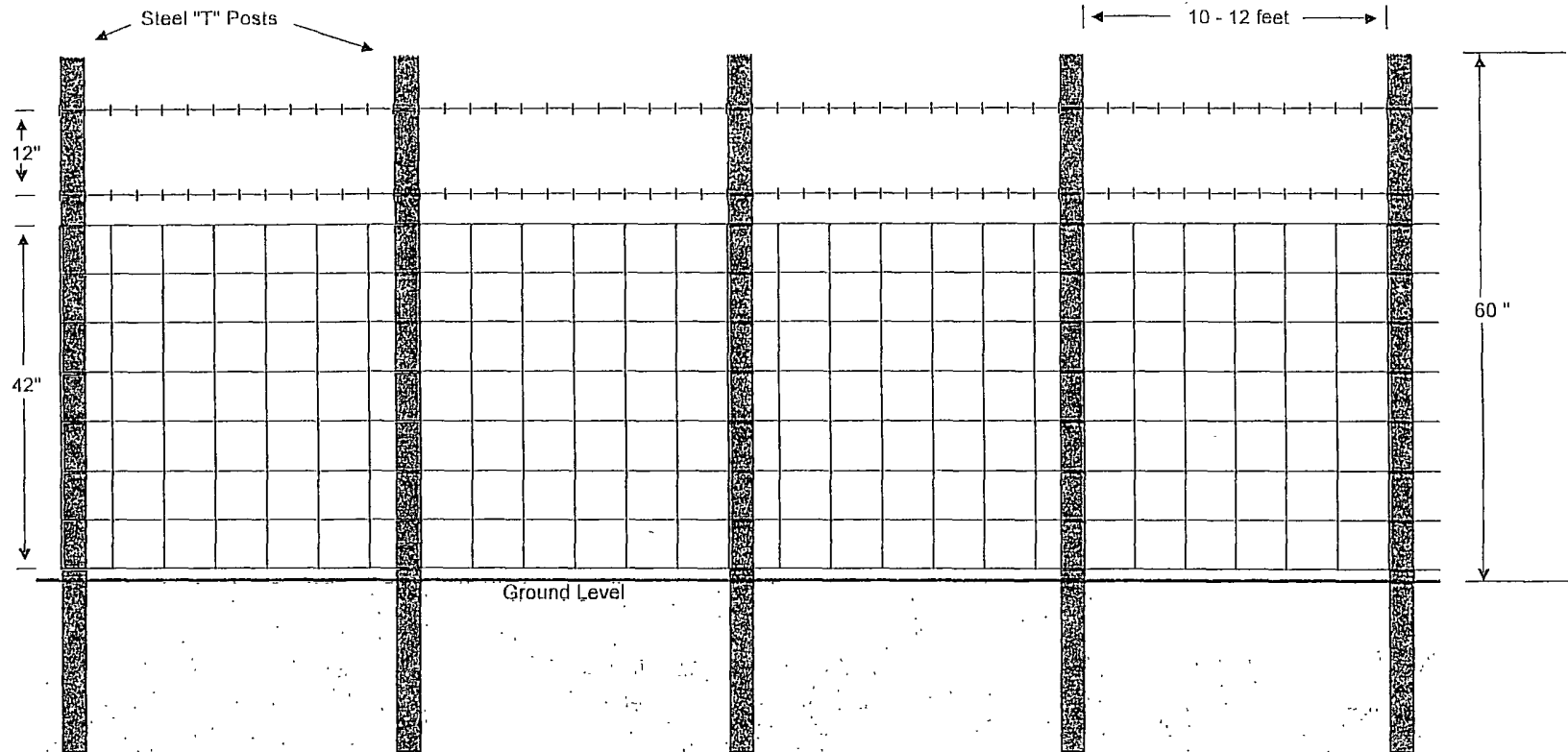
If the closed area is within the confines of the pad location EV will blend the site to match the pad location as much as possible. Such activities shall prevent erosion, protect fresh water, human health and the environment. EV will obtain written agreement from the surface owner for any alternate re-vegetation proposals and submit to the division for final approval.

- H. The soil cover design will be consistent with the requirements of 19.15.17.13(H)(1) and (3). The soil cover will consist of the background thickness of topsoil or one foot of suitable material to establish vegetation at the site, whichever is greater. The soil cover will be constructed to the site's existing grade and prevent ponding of water and erosion of the cover material.

- I. EV will seed the disturbed areas the first growing season after closing the below grade tank. Seeding will be accomplished via drilling on the contour whenever practical or by other division-approved methods. BLM or Forest Service stipulated seed mixes will be used on federal lands. Vegetative cover will equal 70% of the native perennial vegetative cover (un-impacted) consisting of at least three native plant species, including at least one grass, but not including noxious weeds, and maintain that cover through two successive growing seasons. Repeat seeding or planting will be continued until successful vegetative growth occurs. During the two growing seasons that prove viability, there shall be no artificial irrigation of the vegetation.

EV shall notify the division when it has seeded or planted and when it successfully achieves re-vegetation by U.S. Mail.

- K. Within 60 days of completion of closure operations, EV will file Form C-144, with attachments, outlining the detailed operations of the closing operations. Such attachments shall include, but not limited to, proof of surface owner and division notifications, confirmation of sampling analysis, disposal facility names and permit numbers, soil backfilling and cover installation, re-vegetation application rates and seeding techniques, and photo documentations.



TESTED PROPERTY	TEST METHOD	FREQUENCY	MINIMUM AVERAGE VALUE				
			30 mil	40 mil	60 mil	80 mil	100 mil
Thickness, (minimum average) mil (mm) Lowest individual reading (-10%)	ASTM D 5199	every roll	30 (0.75) 27 (0.69)	40 (1.00) 35 (0.91)	60 (1.50) 54 (1.40)	80 (2.00) 72 (1.80)	100 (2.50) 90 (2.30)
Density, g/cm ³	ASTM D 1505	200,000 lb	0.94	0.94	0.94	0.94	0.94
Tensile Properties (each direction)	ASTM D 6693, Type IV Dumbell, 2 ipm	20,000 lb					
Strength at Break, lb/in-width (N/mm)			120 (21) 66 (11)	152 (26) 84 (14)	243 (42) 132 (23)	327 (57) 177 (30)	410 (71) 212 (37)
Strength at Yield, lb/in-width (N/mm)			700	700	700	700	700
Elongation at Break, %	G.L. 2.0 in (51 mm)		13	13	13	13	13
Elongation at Yield, %	G.L. 1.3 in (33 mm)						
Tear Resistance, lb (N)	ASTM D 1004	45,000 lb	21 (93)	28 (124)	42 (186)	58 (257)	73 (324)
Puncture Resistance, lb (N)	ASTM D 4833	45,000 lb	65 (289)	85 (379)	125 (556)	160 (711)	195 (867)
Carbon Black Content, % (Range)	ASTM D 1 603*/421 8	20,000 lb	2.0 - 3.0	2.0 - 3.0	2.0 - 3.0	2.0 - 3.0	2.0 - 3.0
Carbon Black Dispersion	ASTM D 5596	45,000 lb	Note ⁽¹⁾	Note ⁽¹⁾	Note ⁽¹⁾	Note ⁽¹⁾	Note ⁽¹⁾
Notched Constant Tensile Load, hr	ASTM D 5397, Appendix	200,000 lb	1000	1000	1000	1000	1000
Oxidative Induction Time, min	ASTM D 3895, 200°C; O ₂ , 1 atm	200,000 lb	>140	>140	>140	>140	>140
TYPICAL ROLL DIMENSIONS							
Roll Length ⁽²⁾ , ft (m)			1,120 (341)	870 (265)	560 (171)	430 (131)	340 (104)
Roll Width ⁽²⁾ , ft (m)			22.5 (6.9)	22.5 (6.9)	22.5 (6.9)	22.5 (6.9)	22.5 (6.9)
Roll Area, ft ² (m ²)			25,200 (2,341)	19,575 (1,819)	12,600 (1,171)	9,675 (899)	7,650 (711)

NOTES:

- ⁽¹⁾ Dispersion only applies to near spherical agglomerates. 9 of 10 views shall be Category 1 or 2. No more than 1 view from Category 3.
- ⁽²⁾ Roll lengths and widths have a tolerance of ± 1%.
- GSE HD is available in rolls weighing approximately 3,900 lb (1,769 kg).
- All GSE geomembranes have dimensional stability of ±2% when tested according to ASTM D 1204 and LTB at <-77° C when tested according to ASTM D 745.
- *Modified.

O.R.E. SYSTEMS
P.O. Box 3677
Farmington, NM 87409
(505) 327-2161