

District I
1625 N French Dr., Hobbs, NM 88240
District II
1301 W. Grand Avenue, Artesia, NM 88210
District III
1000 Rio Brazos Road, Aztec, NM 87410
District IV
1220 S. St Francis Dr., Santa Fe, NM 87505

State of New Mexico
Energy Minerals and Natural Resources
Department
Oil Conservation Division
1220 South St. Francis Dr.
Santa Fe, NM 87505

Form C-144
July 21, 2008

For temporary pits, closed-loop systems, and below-grade tanks, submit to the appropriate NMOCD District Office.
For permanent pits and exceptions submit to the Santa Fe Environmental Bureau office and provide a copy to the appropriate NMOCD District Office.

4753

Pit, Closed-Loop System, Below-Grade Tank, or
Proposed Alternative Method Permit or Closure Plan Application

- Type of action: Permit of a pit, closed-loop system, below-grade tank, or proposed alternative method
 Closure of a pit, closed-loop system, below-grade tank, or proposed alternative method
 Modification to an existing permit
 Closure plan only submitted for an existing permitted or non-permitted pit, closed-loop system, below-grade tank, or proposed alternative method

Instructions: Please submit one application (Form C-144) per individual pit, closed-loop system, below-grade tank or alternative request

Please be advised that approval of this request does not relieve the operator of liability should operations result in pollution of surface water, ground water or the environment. Nor does approval relieve the operator of its responsibility to comply with any other applicable governmental authority's rules, regulations or ordinances.

1.
Operator: EnerVest Operating, LLC OGRID #: 143199
Address: 1001 Fannin St. Ste 800 Houston, Texas 77002
Facility or well name: Jicarilla Apache Tribal 151 #7E
API Number: 30-039-23163 OCD Permit Number: _____
U/L or Qtr/Qtr D Section 04 Township 26N Range 05W County: Rio Arriba
Center of Proposed Design: Latitude 36.520780 Longitude -107.369150 NAD: 1927 1983
Surface Owner: Federal State Private Tribal Trust or Indian Allotment

2.
 Pit: Subsection F or G of 19.15.17.11 NMAC
Temporary: Drilling Workover
 Permanent Emergency Cavitation P&A
 Lined Unlined Liner type: Thickness _____ mil LLDPE HDPE PVC Other _____
 String-Reinforced
Liner Seams: Welded Factory Other _____ Volume: _____ bbl Dimensions: _____



3.
 Closed-loop System: Subsection H of 19.15.17.11 NMAC
Type of Operation: P&A Drilling a new well Workover or Drilling (Applies to activities which require prior approval of a permit or notice of intent)
 Drying Pad Above Ground Steel Tanks Haul-off Bins Other _____
 Lined Unlined Liner type: Thickness _____ mil LLDPE HDPE PVC Other _____
Liner Seams: Welded Factory Other _____

4.
 Below-grade tank: Subsection I of 19.15.17.11 NMAC
Volume: 95 bbl Type of fluid: Primarily produced water w/ compressor skid precipitation & incidental lubricating oil
Tank Construction material: Steel w/ expanded metal cover
 Secondary containment with leak detection Visible sidewalls, liner, 6-inch lift and automatic overflow shut-off
 Visible sidewalls and liner Visible sidewalls only Other _____ electronic monitoring _____
Liner type: Thickness _____ mil HDPE PVC Other _____

5.
 Alternative Method:
Submittal of an exception request is required. Exceptions must be submitted to the Santa Fe Environmental Bureau office for consideration of approval.

6.
Fencing: Subsection D of 19.15.17.11 NMAC (*Applies to permanent pits, temporary pits, and below-grade tanks*)
 Chain link, six feet in height, two strands of barbed wire at top (*Required if located within 1000 feet of a permanent residence, school, hospital, institution or church*)
 Four foot height, four strands of barbed wire evenly spaced between one and four feet
 Alternate. Please specify _____ 42" Hog-wire fence with 2 strands barbed-wire on top _____

7.
Netting: Subsection E of 19.15.17.11 NMAC (*Applies to permanent pits and permanent open top tanks*)
 Screen Netting Other _____
 Monthly inspections (If netting or screening is not physically feasible)

8.
Signs: Subsection C of 19.15.17.11 NMAC
 12"x 24", 2" lettering, providing Operator's name, site location, and emergency telephone numbers
 Signed in compliance with 19.15.3.103 NMAC

9.
Administrative Approvals and Exceptions:
 Justifications and/or demonstrations of equivalency are required. Please refer to 19.15.17 NMAC for guidance.
Please check a box if one or more of the following is requested, if not leave blank:
 Administrative approval(s): Requests must be submitted to the appropriate division district or the Santa Fe Environmental Bureau office for consideration of approval.
 Exception(s): Requests must be submitted to the Santa Fe Environmental Bureau office for consideration of approval.

10.
Siting Criteria (regarding permitting): 19.15.17.10 NMAC
Instructions: The applicant must demonstrate compliance for each siting criteria below in the application. Recommendations of acceptable source material are provided below. Requests regarding changes to certain siting criteria may require administrative approval from the appropriate district office or may be considered an exception which must be submitted to the Santa Fe Environmental Bureau office for consideration of approval. Applicant must attach justification for request. Please refer to 19.15.17.10 NMAC for guidance. Siting criteria does not apply to drying pads or above-grade tanks associated with a closed-loop system.

Ground water is less than 50 feet below the bottom of the temporary pit, permanent pit, or below-grade tank. - NM Office of the State Engineer - iWATERS database search; USGS; Data obtained from nearby wells	<input type="checkbox"/> Yes <input checked="" type="checkbox"/> No
Within 300 feet of a continuously flowing watercourse, or 200 feet of any other significant watercourse or lakebed, sinkhole, or playa lake (measured from the ordinary high-water mark). - Topographic map; Visual inspection (certification) of the proposed site	<input type="checkbox"/> Yes <input checked="" type="checkbox"/> No
Within 300 feet from a permanent residence, school, hospital, institution, or church in existence at the time of initial application. (Applies to temporary, emergency, or cavitation pits and below-grade tanks) - Visual inspection (certification) of the proposed site; Aerial photo; Satellite image	<input type="checkbox"/> Yes <input checked="" type="checkbox"/> No <input type="checkbox"/> NA
Within 1000 feet from a permanent residence, school, hospital, institution, or church in existence at the time of initial application. (Applies to permanent pits) - Visual inspection (certification) of the proposed site; Aerial photo; Satellite image	<input type="checkbox"/> Yes <input checked="" type="checkbox"/> No <input type="checkbox"/> NA
Within 500 horizontal feet of a private, domestic fresh water well or spring that less than five households use for domestic or stock watering purposes, or within 1000 horizontal feet of any other fresh water well or spring, in existence at the time of initial application. - NM Office of the State Engineer - iWATERS database search; Visual inspection (certification) of the proposed site	<input checked="" type="checkbox"/> Yes <input type="checkbox"/> No
Within incorporated municipal boundaries or within a defined municipal fresh water well field covered under a municipal ordinance adopted pursuant to NMSA 1978, Section 3-27-3, as amended. - Written confirmation or verification from the municipality; Written approval obtained from the municipality	<input type="checkbox"/> Yes <input checked="" type="checkbox"/> No
Within 500 feet of a wetland. - US Fish and Wildlife Wetland Identification map; Topographic map; Visual inspection (certification) of the proposed site	<input type="checkbox"/> Yes <input checked="" type="checkbox"/> No
Within the area overlying a subsurface mine. - Written confirmation or verification or map from the NM EMNRD-Mining and Mineral Division	<input type="checkbox"/> Yes <input checked="" type="checkbox"/> No
Within an unstable area. - Engineering measures incorporated into the design, NM Bureau of Geology & Mineral Resources; USGS; NM Geological Society; Topographic map	<input type="checkbox"/> Yes <input checked="" type="checkbox"/> No
Within a 100-year floodplain. - FEMA map	<input type="checkbox"/> Yes <input checked="" type="checkbox"/> No

11.

Temporary Pits, Emergency Pits, and Below-grade Tanks Permit Application Attachment Checklist: Subsection B of 19.15.17.9 NMAC

Instructions: Each of the following items must be attached to the application. Please indicate, by a check mark in the box, that the documents are attached.

- Hydrogeologic Report (Below-grade Tanks) - based upon the requirements of Paragraph (4) of Subsection B of 19.15.17.9 NMAC
- Hydrogeologic Data (Temporary and Emergency Pits) - based upon the requirements of Paragraph (2) of Subsection B of 19.15.17.9 NMAC
- Siting Criteria Compliance Demonstrations - based upon the appropriate requirements of 19.15.17.10 NMAC
- Design Plan - based upon the appropriate requirements of 19.15.17.11 NMAC
- Operating and Maintenance Plan - based upon the appropriate requirements of 19.15.17.12 NMAC
- Closure Plan (Please complete Boxes 14 through 18, if applicable) - based upon the appropriate requirements of Subsection C of 19.15.17.9 NMAC and 19.15.17.13 NMAC

Previously Approved Design (attach copy of design) API Number: _____ or Permit Number: _____

12.

Closed-loop Systems Permit Application Attachment Checklist: Subsection B of 19.15.17.9 NMAC

Instructions: Each of the following items must be attached to the application. Please indicate, by a check mark in the box, that the documents are attached.

- Geologic and Hydrogeologic Data (only for on-site closure) - based upon the requirements of Paragraph (3) of Subsection B of 19.15.17.9
- Siting Criteria Compliance Demonstrations (only for on-site closure) - based upon the appropriate requirements of 19.15.17.10 NMAC
- Design Plan - based upon the appropriate requirements of 19.15.17.11 NMAC
- Operating and Maintenance Plan - based upon the appropriate requirements of 19.15.17.12 NMAC
- Closure Plan (Please complete Boxes 14 through 18, if applicable) - based upon the appropriate requirements of Subsection C of 19.15.17.9 NMAC and 19.15.17.13 NMAC

Previously Approved Design (attach copy of design) API Number: _____

Previously Approved Operating and Maintenance Plan API Number: _____ (Applies only to closed-loop system that use above ground steel tanks or haul-off bins and propose to implement waste removal for closure)

13.

Permanent Pits Permit Application Checklist: Subsection B of 19.15.17.9 NMAC

Instructions: Each of the following items must be attached to the application. Please indicate, by a check mark in the box, that the documents are attached.

- Hydrogeologic Report - based upon the requirements of Paragraph (1) of Subsection B of 19.15.17.9 NMAC
- Siting Criteria Compliance Demonstrations - based upon the appropriate requirements of 19.15.17.10 NMAC
- Climatological Factors Assessment
- Certified Engineering Design Plans - based upon the appropriate requirements of 19.15.17.11 NMAC
- Dike Protection and Structural Integrity Design - based upon the appropriate requirements of 19.15.17.11 NMAC
- Leak Detection Design - based upon the appropriate requirements of 19.15.17.11 NMAC
- Liner Specifications and Compatibility Assessment - based upon the appropriate requirements of 19.15.17.11 NMAC
- Quality Control/Quality Assurance Construction and Installation Plan
- Operating and Maintenance Plan - based upon the appropriate requirements of 19.15.17.12 NMAC
- Freeboard and Overtopping Prevention Plan - based upon the appropriate requirements of 19.15.17.11 NMAC
- Nuisance or Hazardous Odors, including H₂S, Prevention Plan
- Emergency Response Plan
- Oil Field Waste Stream Characterization
- Monitoring and Inspection Plan
- Erosion Control Plan
- Closure Plan - based upon the appropriate requirements of Subsection C of 19.15.17.9 NMAC and 19.15.17.13 NMAC

14.

Proposed Closure: 19.15.17.13 NMAC

Instructions: Please complete the applicable boxes, Boxes 14 through 18, in regards to the proposed closure plan.

Type: Drilling Workover Emergency Cavitation P&A Permanent Pit Below-grade Tank Closed-loop System
 Alternative

Proposed Closure Method: Waste Excavation and Removal
 Waste Removal (Closed-loop systems only)
 On-site Closure Method (Only for temporary pits and closed-loop systems)
 In-place Burial On-site Trench Burial
 Alternative Closure Method (Exceptions must be submitted to the Santa Fe Environmental Bureau for consideration)

15.

Waste Excavation and Removal Closure Plan Checklist: (19.15.17.13 NMAC) **Instructions:** Each of the following items must be attached to the closure plan. Please indicate, by a check mark in the box, that the documents are attached.

- Protocols and Procedures - based upon the appropriate requirements of 19.15.17.13 NMAC
- Confirmation Sampling Plan (if applicable) - based upon the appropriate requirements of Subsection F of 19.15.17.13 NMAC
- Disposal Facility Name and Permit Number (for liquids, drilling fluids and drill cuttings)
- Soil Backfill and Cover Design Specifications - based upon the appropriate requirements of Subsection H of 19.15.17.13 NMAC
- Re-vegetation Plan - based upon the appropriate requirements of Subsection I of 19.15.17.13 NMAC
- Site Reclamation Plan - based upon the appropriate requirements of Subsection G of 19.15.17.13 NMAC

16.
Waste Removal Closure For Closed-loop Systems That Utilize Above Ground Steel Tanks or Haul-off Bins Only: (19.15.17.13.D NMAC)
Instructions: Please identify the facility or facilities for the disposal of liquids, drilling fluids and drill cuttings. Use attachment if more than two facilities are required.

Disposal Facility Name: _____ Disposal Facility Permit Number: _____
 Disposal Facility Name: _____ Disposal Facility Permit Number: _____

Will any of the proposed closed-loop system operations and associated activities occur on or in areas that *will not* be used for future service and operations?
 Yes (If yes, please provide the information below) No

Required for impacted areas which will not be used for future service and operations:

Soil Backfill and Cover Design Specifications - - based upon the appropriate requirements of Subsection H of 19.15.17.13 NMAC
 Re-vegetation Plan - based upon the appropriate requirements of Subsection I of 19.15.17.13 NMAC
 Site Reclamation Plan - based upon the appropriate requirements of Subsection G of 19.15.17.13 NMAC

17.
Siting Criteria (regarding on-site closure methods only): 19.15.17.10 NMAC
Instructions: Each siting criteria requires a demonstration of compliance in the closure plan. Recommendations of acceptable source material are provided below. Requests regarding changes to certain siting criteria may require administrative approval from the appropriate district office or may be considered an exception which must be submitted to the Santa Fe Environmental Bureau office for consideration of approval. Justifications and/or demonstrations of equivalency are required. Please refer to 19.15.17.10 NMAC for guidance.

Ground water is less than 50 feet below the bottom of the buried waste. - NM Office of the State Engineer - iWATERS database search; USGS; Data obtained from nearby wells	<input type="checkbox"/> Yes <input type="checkbox"/> No <input type="checkbox"/> NA
Ground water is between 50 and 100 feet below the bottom of the buried waste - NM Office of the State Engineer - iWATERS database search; USGS; Data obtained from nearby wells	<input type="checkbox"/> Yes <input type="checkbox"/> No <input type="checkbox"/> NA
Ground water is more than 100 feet below the bottom of the buried waste. - NM Office of the State Engineer - iWATERS database search; USGS; Data obtained from nearby wells	<input type="checkbox"/> Yes <input type="checkbox"/> No <input type="checkbox"/> NA
Within 300 feet of a continuously flowing watercourse, or 200 feet of any other significant watercourse or lakebed, sinkhole, or playa lake (measured from the ordinary high-water mark). - Topographic map; Visual inspection (certification) of the proposed site	<input type="checkbox"/> Yes <input type="checkbox"/> No
Within 300 feet from a permanent residence, school, hospital, institution, or church in existence at the time of initial application. - Visual inspection (certification) of the proposed site; Aerial photo; Satellite image	<input type="checkbox"/> Yes <input type="checkbox"/> No
Within 500 horizontal feet of a private, domestic fresh water well or spring that less than five households use for domestic or stock watering purposes, or within 1000 horizontal feet of any other fresh water well or spring, in existence at the time of initial application. - NM Office of the State Engineer - iWATERS database; Visual inspection (certification) of the proposed site	<input type="checkbox"/> Yes <input type="checkbox"/> No
Within incorporated municipal boundaries or within a defined municipal fresh water well field covered under a municipal ordinance adopted pursuant to NMSA 1978, Section 3-27-3, as amended. - Written confirmation or verification from the municipality; Written approval obtained from the municipality	<input type="checkbox"/> Yes <input type="checkbox"/> No
Within 500 feet of a wetland. - US Fish and Wildlife Wetland Identification map; Topographic map; Visual inspection (certification) of the proposed site	<input type="checkbox"/> Yes <input type="checkbox"/> No
Within the area overlying a subsurface mine. - Written confirmation or verification or map from the NM EMNRD-Mining and Mineral Division	<input type="checkbox"/> Yes <input type="checkbox"/> No
Within an unstable area. - Engineering measures incorporated into the design; NM Bureau of Geology & Mineral Resources; USGS; NM Geological Society; Topographic map	<input type="checkbox"/> Yes <input type="checkbox"/> No
Within a 100-year floodplain. - FEMA map	<input type="checkbox"/> Yes <input type="checkbox"/> No

18.
On-Site Closure Plan Checklist: (19.15.17.13 NMAC) *Instructions: Each of the following items must be attached to the closure plan. Please indicate, by a check mark in the box, that the documents are attached.*

Siting Criteria Compliance Demonstrations - based upon the appropriate requirements of 19.15.17.10 NMAC
 Proof of Surface Owner Notice - based upon the appropriate requirements of Subsection F of 19.15.17.13 NMAC
 Construction/Design Plan of Burial Trench (if applicable) based upon the appropriate requirements of 19.15.17.11 NMAC
 Construction/Design Plan of Temporary Pit (for in-place burial of a drying pad) - based upon the appropriate requirements of 19.15.17.11 NMAC
 Protocols and Procedures - based upon the appropriate requirements of 19.15.17.13 NMAC
 Confirmation Sampling Plan (if applicable) - based upon the appropriate requirements of Subsection F of 19.15.17.13 NMAC
 Waste Material Sampling Plan - based upon the appropriate requirements of Subsection F of 19.15.17.13 NMAC
 Disposal Facility Name and Permit Number (for liquids, drilling fluids and drill cuttings or in case on-site closure standards cannot be achieved)
 Soil Cover Design - based upon the appropriate requirements of Subsection H of 19.15.17.13 NMAC
 Re-vegetation Plan - based upon the appropriate requirements of Subsection I of 19.15.17.13 NMAC
 Site Reclamation Plan - based upon the appropriate requirements of Subsection G of 19.15.17.13 NMAC

19.

Operator Application Certification:

I hereby certify that the information submitted with this application is true, accurate and complete to the best of my knowledge and belief.

Name (Print): Ronnie L. Young Title: Compliance Supervisor

Signature: Ronnie L Young Date: 1.12.10

e-mail address: ryoung@enervest.net Telephone: 713-495-6530

20.

OCD Approval: Permit Application (including closure plan) Closure Plan (only) OCD Conditions (see attachment)

OCD Representative Signature: Jonathan D. Kelly Approval Date: 5/16/2012

Title: Deputy Oil & Gas Inspector, District #3 OCD Permit Number: _____

21.

Closure Report (required within 60 days of closure completion): Subsection K of 19.15.17.13 NMAC

Instructions: Operators are required to obtain an approved closure plan prior to implementing any closure activities and submitting the closure report. The closure report is required to be submitted to the division within 60 days of the completion of the closure activities. Please do not complete this section of the form until an approved closure plan has been obtained and the closure activities have been completed.

Closure Completion Date: _____

22.

Closure Method:

Waste Excavation and Removal On-Site Closure Method Alternative Closure Method Waste Removal (Closed-loop systems only)
 If different from approved plan, please explain.

23.

Closure Report Regarding Waste Removal Closure For Closed-loop Systems That Utilize Above Ground Steel Tanks or Haul-off Bins Only:

Instructions: Please identify the facility or facilities for where the liquids, drilling fluids and drill cuttings were disposed. Use attachment if more than two facilities were utilized.

Disposal Facility Name: _____ Disposal Facility Permit Number: _____

Disposal Facility Name: _____ Disposal Facility Permit Number: _____

Were the closed-loop system operations and associated activities performed on or in areas that *will not* be used for future service and operations?

Yes (If yes, please demonstrate compliance to the items below) No

Required for impacted areas which will not be used for future service and operations:

- Site Reclamation (Photo Documentation)
- Soil Backfilling and Cover Installation
- Re-vegetation Application Rates and Seeding Technique

24.

Closure Report Attachment Checklist: *Instructions: Each of the following items must be attached to the closure report. Please indicate, by a check mark in the box, that the documents are attached.*

- Proof of Closure Notice (surface owner and division)
- Proof of Deed Notice (required for on-site closure)
- Plot Plan (for on-site closures and temporary pits)
- Confirmation Sampling Analytical Results (if applicable)
- Waste Material Sampling Analytical Results (required for on-site closure)
- Disposal Facility Name and Permit Number
- Soil Backfilling and Cover Installation
- Re-vegetation Application Rates and Seeding Technique
- Site Reclamation (Photo Documentation)

On-site Closure Location: Latitude _____ Longitude _____ NAD: 1927 1983

25.

Operator Closure Certification:

I hereby certify that the information and attachments submitted with this closure report is true, accurate and complete to the best of my knowledge and belief. I also certify that the closure complies with all applicable closure requirements and conditions specified in the approved closure plan.

Name (Print): _____ Title: _____

Signature: _____ Date: _____

e-mail address: _____ Telephone: _____

**Attachment to Form C-144
Below-grade Tank Permit Application**

Introduction:

EnerVest Operating, LLC (EV) is submitting this permit application to operate an existing below-grade tank under the authority of 19.15.17 NMAC. The tank is not currently permitted; therefore this document serves as supporting documentation referenced in the attached Form C-144. EV operates coal bed methane production sites in San Juan County, New Mexico. The below-grade tank at this location is used to collect precipitation and residual lubrication oil from the engine skid drain system and produced water from the primary and secondary separators. Produced water from the secondary separator may have small quantities of entrained lubricating oil from the compressor cylinder. In general, emulsified lubricating oil makes up a small percentage of the overall contents of the below-grade tank.

This application is being submitted for the following well site:

Well Name: Jicarilla Apache Tribal 151 #7E
API No: 30-039-23163
Location: UL D, Sec 04, 26N, 05W

The supporting documentation contained in this C-144 attachment is organized as follows:

Section I – Sitting Criteria Compliance Demonstration
Section II – Design Plan
Section III – Operating and Maintenance Plan
Section IV – Closure Plan
Section V – Hydrogeology Report

Appendices:

01 – USGS 7.5 Minute Topo Map
02 – Groundwater (water well search)
03 – Aerial Photo
04 – Municipal Boundary Map
05 – U.S. Fish & Wildlife Wetland Identification Map
06 – FEMA 100-year Floodplain map
07 – Mine Map
08 – C-102 Location Plat, Facility Inspection Sheet, Below-Grade Tank Diagram
09 – Karst Map for unstable areas

References

Section I

Sitting Criteria Compliance Demonstration

Jicarilla Apache Tribal 151 #7E

API No. 30-039-23163

Sitting Criteria Compliance Demonstration

Criteria as per 19.15.17.10.(A) (1)	In Compliance	Comments
Ground water less than 50' below bottom of tank	Yes	Refer to "Site Hydrology Report" in Section V
Within 300' of continuously flowing watercourse or 200 feet of other significant watercourse, lakebed, sinkhole, or playa lake (measured from ordinary high-water mark)	Yes	Refer to Observed Setting Requirements completed by field personnel in Appendix 08
Within 300 feet of a permanent residence, school, hospital, institution, or church	Yes	Refer to Observed Setting Requirements completed by field personnel in Appendix 08
Within 500 ft of a private, domestic freshwater well or spring or within 1000 ft of freshwater well or spring in existence at time of application	No - Old water well 950 ft, not on maps	Refer to Observed Setting Requirements completed by field personnel in Appendix 08
Within incorporated municipal boundary of defined municipal fresh water field	Yes	Refer to Observed Setting Requirements completed by field personnel in Appendix 08
Within 500 feet of a wetland	Yes	Refer to Observed Setting Requirements completed by field personnel in Appendix 08 and USF&W Map in Appendix 5
Within the area overlying a subsurface mine.	Yes	Refer to Observed Setting Requirements completed by field personnel in Appendix 08
Within an unstable area	Yes	Refer to Observed Setting Requirements completed by field personnel in Appendix 08 and Karst Map in Appendix 09
Within a 100-year floodplain	Yes	Refer to Observed Setting Requirements completed by field personnel in Appendix 08 and FEMA Map in Appendix 06

Section II

Design & Construction Plan

EnerVest Operating, LLC (EV)

**BELOW-GRADE TANK
DESIGN AND CONSTRUCTION SPECIFICATIONS**

Rule 19.15.17.11

- C. Enervest Operating is the official operator of record for all wells which have below-grade tanks to be addressed in this specification. All below-grade tanks are located on these leases and will be in full compliance with 19.15.16.8 regarding signage.
- D. EV will ensure a fence shall be constructed and maintained in good repair with gates that are closed and locked when responsible personnel are not on site. EV shall insure that all gates are closed and locked when responsible personnel are not on-site.

If the below-grade tank is located within 1,000 feet of a permanent residence, school, hospital, institution or church, the fence shall be a chain link security fence at least 6 feet in height with at least two strands of barbed wire on top.

If the below-grade tank is not within 1,000 feet of the above mentioned structures, the fence shall constructed to exclude livestock with at least four strands of barbed wire evenly spaced between one foot from the ground and four foot above the ground.

EV is requesting administrative approval to use a 42” Hog wire fence with 2 strands barbed-wire on top in lieu of the required four strand barbed wire fence. This will be supported with iron posting at the corners and 10 – 12 feet apart. EV believes this will offer better protection for wildlife in these tank areas.

- E. EV shall ensure an open top tank is screened with expanded 3/16” metal screen or a fully closed top, both of which are welded on the top of the tank. Such screening will be painted to blend with the below-grade tank. EV believes this is sufficient strength to protect migratory birds or other wildlife.
- I. EV will ensure all below-grade tanks will be constructed of 3/16” steel, resistant to the tank’s contents and to damage from sunlight. Based on water production and road condition for access during the winter months there are a choice of three different sizes which could be used:

CAPACITY	DIAMETER	HEIGHT
125 bbl	15’	4’
120 bbl	12’	6’
100 bbl	12’	5’

This tank will contain liquids and should prevent contamination of fresh water to protect the public health and environment.

The below-grade system will include a excavated area for the tanks which will be dependent upon the size of the tank used:

- 18' x 18' x 4' High Square excavated area
- 18' Diameter x 4' High Circular excavated area
- 18' Diameter x 5' High Circular excavated area

Most of our below-grade tank systems were installed prior to June 16, 2008 and are 16.5' x 16.5' x 4' square excavated area design. As tanks are retro fitted, this will be changed to one of the above. The particular area and well conditions will determine which design best for that particular well. EV will ensure that there will be room to walk around the tank inside the containment area which will better enable our field personnel to inspect for damage to liners or incidental leaks. Please refer to tank diagram under Appendix 8 for details.

All excavated areas will be reinforced with metal walls to prevent collapse. There will be sufficient open area on all sides of the tank to witness any incidental release that may occur. Please refer to tank diagram under Appendix 8.

EV will ensure the base of any excavated area containing a below-grade tank will be level and free of rocks, debris, sharp edges or irregularities to prevent punctures, cracks or indentations of the liner or tank bottom.

EV will ensure that any geomembrane liner used shall consist of 30-mil flexible PVC or 60-mil HDPE liner or equivalent liner material. The liner shall be composed of an impervious, synthetic material that is resistant to petroleum hydrocarbons, salt and acidic and alkaline solutions and shall be resistant to ultraviolet light. The liner shall have a hydraulic conductivity no greater than 1×10^{-9} cm/sec. The liner shall be compatible with EPA SW-846 method 9090A. EV will install the liner in such a manner as to divert any possible leak for visual inspection. EV will demonstrate to the OCD that the liner complies with the specifications within Subparagraph (a) of Paragraph (4) of Section I of 19.156.17.11 NMAC and obtain approval from the division prior to the installation of the new design.

EV will ensure the fluid levels of tanks will be monitored by automatic high level alarms at 24" from the top and shut-off device at 10 1/2 inches from the top of the tank. The tanks will be also equipped with a manual shut-off valve in the event it is needed. Please see design specification sheet of this system in this section. The majority of our below-grade tanks are within the berm around our tank battery and as so are protected from run-on water. Those outside this berm will be protected with an earthen berm which will extend at least 6" above surface ground level to divert run-on around the tank. The side walls of the excavated

area will extend at least 6" above the ground level to divert run-on water around the tank. Any possible leak will be diverted, on the liner, in such a way can be visually inspected.

EV tank design will be a single walled tank constructed to ensure that the side walls are open for visual inspection for leaks; the bottom will be elevated six inches above the ground surface and will contain a geomembrane liner, as described above, directly on the ground level of the containment area.

Once a below-grade tank which was installed prior to June 16, 2008 does not demonstrate integrity, EV shall promptly repair or remove that below-grade tank and close the tank or install a below-grade tank that is in full compliance with Paragraph 1 thru 4 of Section I of 19.15.17.11 NMAC. EV shall comply with the operational requirements of 19.15.17.12 NMAC. Please refer to tank diagram under Appendix 8 for details

Any single walled below-grade tank installed before June 16, 2008 where any portion of the tank sidewall is below the ground surface and not totally visible shall be closed, retrofited or replaced before June 15, 2013. EV will fully comply with Paragraph 1 thru 4 of Section I of 19.15.17.11 NMAC for all retrofitting or replacement of below-grade tanks.

Table 1. GSE HD Specifications

TESTED PROPERTY	TEST METHOD	FREQUENCY	MINIMUM AVERAGE VALUE				
			30 mil	40 mil	60 mil	80 mil	100 mil
Thickness, (minimum average) mil (mm)	ASTM D 5199	every roll	30 (0.75)	40 (1.00)	60 (1.50)	80 (2.00)	100 (2.50)
Lowest individual reading (-10%)			27 (0.69)	36 (0.91)	54 (1.40)	72 (1.80)	90 (2.30)
Density, g/cm ³	ASTM D 1505	200,000 lb	0.94	0.94	0.94	0.94	0.94
Tensile Properties (each direction)	ASTM D 6693, Type IV Dumbbell, 2 ipm	20,000 lb	120 (21)	152 (26)	243 (42)	327 (57)	410 (71)
Strength at Break, lb/in-width (N/mm)			66 (11)	84 (14)	132 (23)	177 (30)	212 (37)
Strength at Yield, lb/in-width (N/mm)	G.L. 2.0 in (51 mm) G.L. 1.3 in (33 mm)		700	700	700	700	700
Elongation at Break, %			13	13	13	13	13
Elongation at Yield, %							
Tear Resistance, lb (N)	ASTM D 1004	45,000 lb	21 (93)	28 (124)	42 (186)	58 (257)	73 (324)
Puncture Resistance, lb (N)	ASTM D 4833	45,000 lb	65 (289)	85 (378)	125 (556)	160 (711)	195 (867)
Carbon Black Content, % (Range)	ASTM D 1 603*/421 8	20,000 lb	2.0 - 3.0	2.0 - 3.0	2.0 - 3.0	2.0 - 3.0	2.0 - 3.0
Carbon Black Dispersion	ASTM D 5596	45,000 lb	Note ⁽¹⁾	Note ⁽¹⁾	Note ⁽¹⁾	Note ⁽¹⁾	Note ⁽¹⁾
Notched Constant Tensile Load, hr	ASTM D 5397, Appendix	200,000 lb	1000	1000	1000	1000	1000
Oxidative Induction Time, min	ASTM D 3895, 200°C; O ₂ , 1 atm	200,000 lb	>140	>140	>140	>140	>140
TYPICAL ROLL DIMENSIONS							
Roll Length ⁽²⁾ , ft (m)			1,120 (341)	870 (265)	560 (171)	430 (131)	340 (104)
Roll Width ⁽²⁾ , ft (m)			22.5 (6.9)	22.5 (6.9)	22.5 (6.9)	22.5 (6.9)	22.5 (6.9)
Roll Area, ft ² (m ²)			25,200 (2,341)	19,575 (1,819)	12,600 (1,171)	9,675 (899)	7,650 (711)

NOTES:

- * ⁽¹⁾Dispersion only applies to near spherical agglomerates 9 of 10 views shall be Category 1 or 2. No more than 1 view from Category 3.
- ⁽²⁾Roll lengths and widths have a tolerance of ± 1%.
- GSE HD is available in rolls weighing approximately 3,900 lb (1,769 kg)
- All GSE geomembranes have dimensional stability of ±2% when tested according to ASTM D 1204 and LTB of <-77° C when tested according to ASTM D 746
- *Modified.

O.R.E. SYSTEMS
P.O. Box 3677
Farmington, NM 87499
(505) 327-2161

Section III

Operation & Maintenance Plan

EnerVest Operating, LLC (EV)

**BELOW-GRADE TANK
OPERATIONAL REQUIREMENTS**

Rule 19.15.17.12

- A. EV will operate and maintain Below-Grade Tanks to insure the integrity of the below-grade tank, liner, liner system or berms to prevent contamination of fresh water and protect public health and the environment.

EV will not discharge or store any hazardous waste material of any kind in any Below-Grade Tank.

Any penetration of the below-grade below the liquid's surface that may occur, EV shall remove all liquid above the damage or leak line within 48 hours of the discovery. EV shall notify the appropriate district office within 48 hours of the discovery and repair the damage or replace the liner or below-grade tank.

EV will insure the metal retaining walls of the below-grade system around each tank will extend at least 6" above ground level or be equipped with a 6" earthen berm in an effort to divert run-on water around the below-grade system.

- D. EV will insure that a below-grade tank constructed and installed prior to June 16, 2008 that does not meet the requirements of 19.15.17.11 NMAC and does not demonstrate integrity or that the below-grade tank develops any conditions as identified in 19.15.17.12 NMAC shall close the existing below-grade tank pursuant to the closure requirements of 19.15.17.13 NMAC and install a below-grade tank that is in full compliance with our approved design. Please see below-grade system diagram in Appendix 8 for details.

EV will insure all Below-grade tanks will be equipped with automatic high-level alarm which sounds at 24" and than shut off devise to insure that flow will shut off at the freeboard height of 10 1/2 inches.

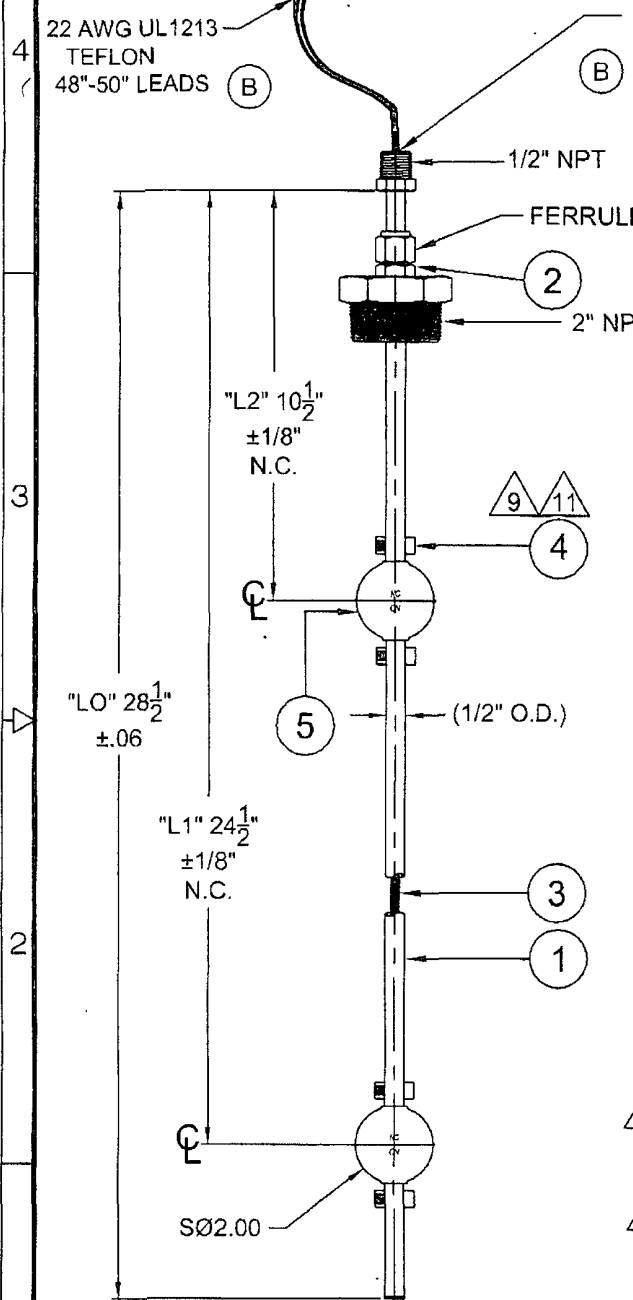
The majority of our below-grade tanks are within the berm around our tank battery and as so are protected from run-on water. Those outside this berm will be protected with an earthen berm which will extend at least 6" above surface ground level to divert run-on around the tank.

EV will remove any visible or measurable layer of oil from the fluid surface of a below-grade tank.

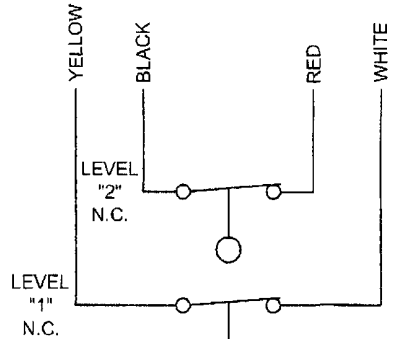
With any below-grade tank, installed before June 16, 2008, that is retrofitted or replaced with another tank, EV will insure that the soil beneath the removed soil is inspected for wet, discolored, or any other evidence of release, with photographic evidence. EV will report the results of all testing to the division on form C-141 and demonstrate to the division whether the evidence of contamination indicates an imminent threat to fresh water, public health, safety of the environment exists. If the division determines that the contamination does not pose an imminent threat to fresh water, public health, safety or the environment, EV shall complete the retrofit or the replacement of the below-grade tank as per our approved design program as indicated in Appendix 8. If EV or the division determines that the contamination poses an imminent threat to fresh water, public health, safety or the environment, then EV shall close the existing below-grade tank pursuant to the closure requirements of 19.17.15.13 NMAC prior to initiating the retrofit or replacement.

PROPRIETARY NOTICE:
THIS DOCUMENT AND THE DATA
DISCLOSED HEREIN OR HEREWITH
IS NOT TO BE REPRODUCED,
USED, OR DISCLOSED IN WHOLE
OR IN PART TO ANYONE WITHOUT
THE PERMISSION OF INNOVATIVE
SOLUTIONS

REVISION BLOCK				
REV.	E C N NO.	DESCRIPTION	DATE	APPR'VD
00		INITIAL RELEASE	6/27/06	D.T.
A	N1389	ADDED TUBE END SHRINK AND POTTING	1/26/07	MJR
B	N1528	UPDATED LEAD WIRES, POTTING AND FERRULE	9/12/09	R.B.



POTTING:
LOCK SWITCH IN BOTTOM
WITH 2-4 CC'S OF
CERAMIC #0975-0006-0001
BACK FILL WITH CERAMIC
ADHESIVE COMPOUND



WIRING DIAGRAM
"DRY" CIRCUITS

- NOTES:
- WETTED MATERIALS.
STEM / MOUNTING: 316/316L S.S.
FLOAT: 316L S.S.
SHAFT COLLAR: 316 S.S.
 - TEMPERATURE RANGE: -40°F TO +250°F
 - PRESSURE RATING: 120 PSIG
 - ELECTRICAL SPECIFICATIONS:
SWITCHING VOLTAGE: 240V AC/DC MAX.
SWITCHING CURRENT: 0.5 AMP MAX
CONTACT RATING: 50VA MAX.
 - MINIMUM MEDIA SP. GR. : 0.85 S.G.
 - INSTALL FLOAT IN THE N.C. POSITION WITH
MAGNET UP AS SHOWN.
 - OVER TRAVEL TO BE BETWEEN 1/16" AND 3/16" MAX.
UPON EITHER SWITCH CLOSURE OR OPENING.
 -
 - TIGHTEN SCREW ONLY 1/2 THRU PAST CONTACT
WITH STEM
 - APPLY SILICON SEALER AROUND SWITCHES TO
PREVENT SHOCK TO SWITCHES
 - ADD ONE DROP OF LOCTITE 290 TO THE SET SCREWS OF
EACH COLLAR.

5	2	2000-2000-0006	2000-STD FLOAT	316L S.S.
4	4	0610-0500-0008	1/2" SHAFT COLLAR	316 S.S.
3	1	3000C3890-0001	SWITCH ASSEMBLY	
2	1	0199-0908-0500	AJUSTABLE MOUNTING	316/316L
1	1	5000C3890-0001	STEM/MTG. SUB-ASSEMBLY	316/316L

ITEM	QTY	PART NUMBER	DESCRIPTION, CATALOG NO. OR FINISHED SIZE	MAT'L
UNLESS OTHERWISE SPECIFIED				
DIMENSIONS ARE IN INCHES, () ARE IN MM (MILLIMETERS)		MAIL PART #	DRAWN BY	DATE
TOLERANCES		FRESH	DATE	DATE
X = 1 XX = 01 XXX = 005		PLATING	PROJECT NO.	SIZE
FRACTIONS = 1/64 ANGLE = 30°			SIZE	FSCM NO.
MACHINED SURFACES				UNCL. NO.
REMOVE ALL BURRS AND SHARP EDGES		MAT'L:	AS NOTED	SCALE

INNOVATIVE SOLUTIONS, LLC	
TITLE	2 LEVEL S.S. / S.S. FLOAT
L500 LEVEL SENSOR	
UNCL. NO.	L500C3890-0001
SCALE	25
SHEET	1 OF

Section IV

Closure Plan

EnerVest Operating, LLC (EV)

**BELOW-GRADE TANK
CLOSURE REQUIREMENTS**

Rule 19.15.17.13

Before June 15, 2013, EV shall close, retrofit, or replace an existing below-grade tank that has not demonstrated integrity.

EV shall close a below-grade tank within the time periods provided in 19.15.17.13 NMAC, or by an earlier date that the division requires because of imminent danger to fresh water, public health or the environment.

- A. EV shall close an existing below-grade tank that does not meet the requirements of Subsection I, paragraphs (1) through (4), of 19.15.17.11 NMAC if not retrofitted to comply with said requirements prior to any sale or change of operator to 19.15.9.9 NMAC.

Any below-grade tank installed prior to June 16, 2008 that is single walled and where any portion of the tank sidewall is below the ground surface and not visible shall equip or retrofit the below-grade tank to comply with paragraphs (1) through (4) of Subsection I of 19.15.17.11 NMAC, or close it, within 5 years after June 16, 2008.

Within 60 days of cessation of the permitted below-grade tanks operation or as required by Subsection B of 19.15.17.17 NMAC, EV shall close the below-grade tank in accordance with a closure plan that the appropriate division district office approves.

- J. Prior to implementing any closure operations EV shall research county tax records to determine the name and address of the surface owner of the properties involved. EV shall notify this surface owner via Certified U.S. Mail, return receipt requested, of their intent to close said below-grade tank.

Upon determination, EV will notify the appropriate district office prior to any closure operations beginning. Such notification shall be at least 72 hours, via U.S. Mail, prior to beginning work but not more than one week prior to beginning work. Such notice shall contain at a minimum the following:

Operators Name
Unit letter, Section, Township, & Range of well
Well name and well number
API Number of well

E. .All free standing liquids and sludge will be removed at the start of the below-grade tank closure process from the below-grade tank and disposed of in one of the below division-approved facility as indicated below:

TNT Land Farm	Permit # NM-01-0008	Liquids & Sludge
Environtech Land Farm	Permit # NM-01-0011	Solids
AguaMoss	Permit # 247130	Liquids

EV will obtain prior approval from the division to dispose, recycle, reuse, or reclaim the below-grade tanks and provide documentation of the final disposition of the below-grade tank in the closure report.

Existing liners that are removed as a result of closure will be wiped cleaned and disposed of at a solid waste facility listed below in compliance with Subparagraph (M) of Paragraph (I) of Subsection C 19.15.35.8 NMAC..

San Juan Regional Landfill Permit # SWM 052426 or
 “ Special Waster Permit # SWM052433 “sp”

If there is any on-site equipment associated with a below0grade tank, EV shall remove the equipment, unless the equipment is required for some other purpose .

Upon removal of the below-grade tank, EV will take, at a minimum, a five point composite sample from where the tank was sitting. EV shall collect individual grab samples will be taken from any area that is wet, discolored or showing other evidence of a release. All samples will be analyzed for the following:

Components	Test Method	Limits (mg/Kg)
Benzene	EPA SW-846 8021B or 8260B	0.2
BTEX	EPA SW-846 8021B or 8260B	50
TPH	EPA SW-846 418.1	100
Chlorides	EPA 300.1	250 or background, whichever is greater

EV will insure that the results of all sampling shall be reported to the division on approved form C-141. EV understands that the division may require additional delineation upon review of the results.

If sampling demonstrates that concentrations specified above have NOT been exceeded, or that a release has NOT occurred, EV will backfill the excavation with compacted, non-waste containing, earthen material, construct a division prescribed soil cover, and recontour and re-vegetate the site. The division prescribed soil cover, recontouring, and re-vegetation shall comply with 19.15.17.13.

If EV or the division determines that a release has occurred, EV shall fully comply with 19.15.29 NMAC and 19.15.30 NMAC as appropriate.

- G. Once EV has closed a below-grade tank, we shall reclaim the site to a safe and stable condition that blends with the surrounding undisturbed area. When possible, EV will restore the impacted surface area to the condition that existed prior to oil and gas operations by the placement of soil cover.

If the closed area is within the confines of the pad location EV will blend the site to match the pad location as much as possible. Such activities shall prevent erosion, protect fresh water, human health and the environment. EV will obtain written agreement from the surface owner for any alternate re-vegetation proposals and submit to the division for final approval.

- H. The soil cover design will be consistent with the requirements of 19.15.17.13(H)(1) and (3). The soil cover will consist of the background thickness of topsoil or one foot of suitable material to establish vegetation at the site, whichever is greater. The soil cover will be constructed to the site's existing grade and prevent ponding of water and erosion of the cover material.

- I. EV will seed the disturbed areas the first growing season after closing the below grade tank. Seeding will be accomplished via drilling on the contour whenever practical or by other division-approved methods. BLM or Forest Service stipulated seed mixes will be used on federal lands. Vegetative cover will equal 70% of the native perennial vegetative cover (un-impacted) consisting of at least three native plant species, including at least one grass, but not including noxious weeds, and maintain that cover through two successive growing seasons. Repeat seeding or planting will be continued until successful vegetative growth occurs. During the two growing seasons that prove viability, there shall be no artificial irrigation of the vegetation.

EV shall notify the division when it has seeded or planted and when it successfully achieves re-vegetation by U.S. Mail.

- K. Within 60 days of completion of closure operations, EV will file Form C-144, with attachments, outlining the detailed operations of the closing operations. Such attachments shall include, but not be limited to, proof of surface owner and division notifications, confirmation of sampling analysis, disposal facility names and permit numbers, soil backfilling and cover installation, re-vegetation application rates and seeding techniques, and photo documentations.

Section V

Hydrogeology Report

Regional Hydrogeology Report

The San Jose Formation of Eocene age occurs in New Mexico and Colorado, and its outcrop forms the land surface over much of the eastern half of the central San Juan Basin. It overlies the Nacimiento Formation in the area generally south of the Colorado-New Mexico state line and overlies the Animas Formation in the area generally north of the State line.

The San Jose Formation was deposited in various fluvial-type environments. In general, the unit consists of an interbedded sequence of sandstone, siltstone, and variegated shale. Thickness of the San Jose Formation generally increases from west to east, ranging from 200 feet in the west and south to almost 2,700 feet in the center of the structural basin.

Ground water is associated with alluvial and fluvial sandstone aquifers. Therefore the occurrence of ground water is mainly controlled by the distribution of sandstone in the formation. The distribution of such sandstone is the results of original depositional extend plus any post-depositional modifications, namely erosion and structural deformation.

Transmissivity data for the San Jose Formation are minimal. Values of 40 and 120 feet squared per day were determined from two aquifer tests (Stone et al, 1983. table 5). The reported or measured discharge from 46 water wells completed in San Jose Formation ranges from 0.15 to 61 gallons per minute and the median is 5 gallons per minute. Most of the wells provide water for livestock and domestic use.

The San Jose Formation is a very suitable unit for recharge from precipitation because soils that form on the unit are sandy and highly permeable and therefore readily absorb precipitation. However, low annual precipitation, relatively high transpiration and evaporation rates, and deep dissection of the San Jose Formation by the San Juan River and its tributaries all tend to reduce the effective recharge to the unit.

Stone et al., 1983, Hydrogeology and Water Resources of the San Juan Basin, New Mexico; Socorro, New Mexico Bureau of Mines and Mineral Resources Hydrologic Report 6, 70 p.

Site Specific Hydro Geologic Analysis

Jicarilla Apache Tribal 151 #7E API 30-039-23163

The above referenced well is located at UL D, Sec 04, 26N, 05W at an elevation of 6536. Surface casing was set to a depth of 294' or at a depth of 6242'.

According to the Office of State Engineer, the closest water well drilled was RG 81026 about 2 miles NE of our location. Drilled to 460 feet at an unknown elevation, it shows water encountered at 180 to 460 feet.

In 2001, Burlington drilled their Jicarilla B #4B (30-039-26702) about 800 feet East of our location. It was at an elevation of 6554 with no indication of water being encountered. Surface casing was set at 229 feet which would be at 6325. This would be 83 feet below than our well.

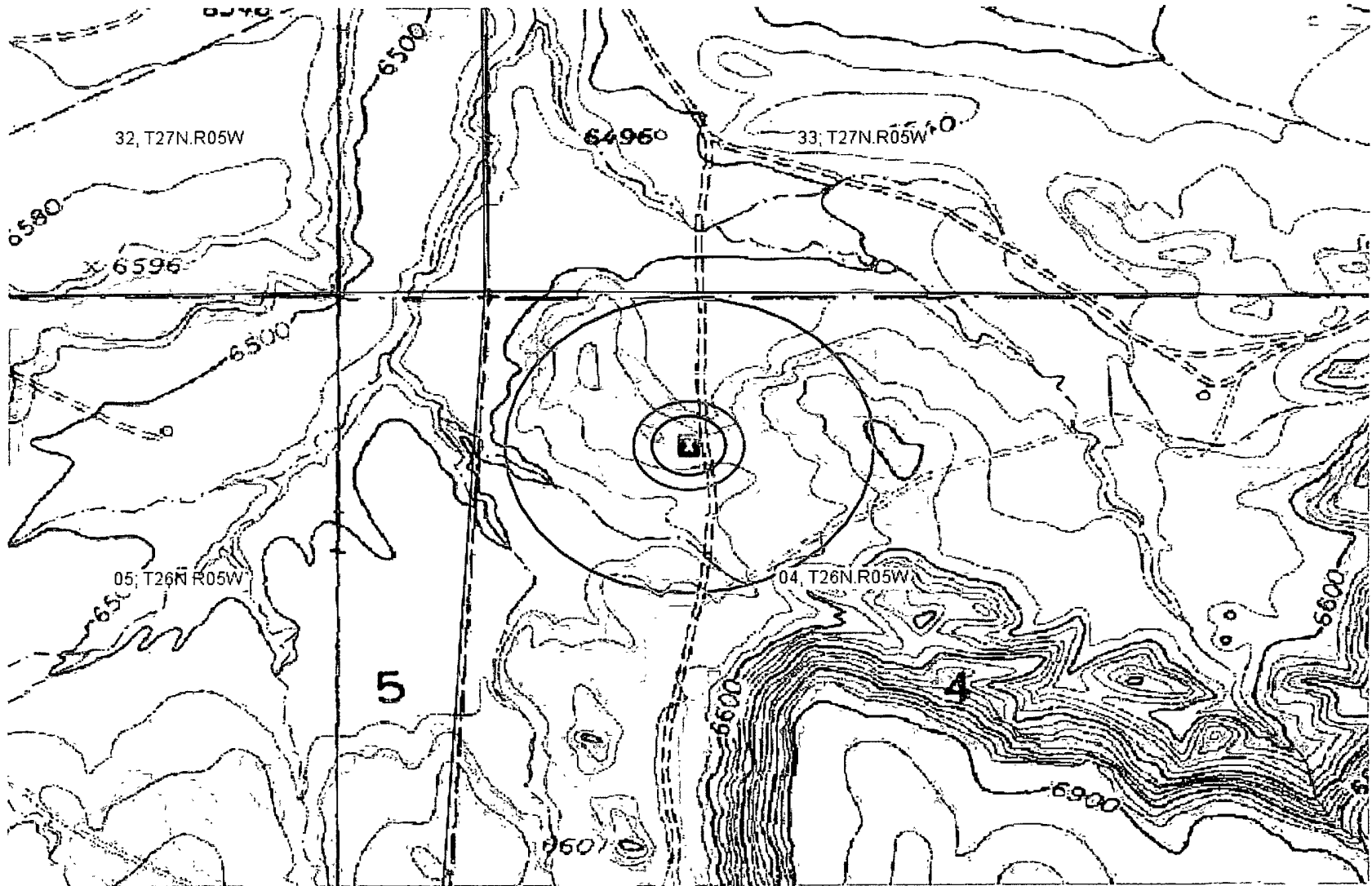
In 1974, Aztec Oil drilled their Jicarilla B #7 (30-039-21037) about 800 feet South of our location. It was at an elevation of 6521 with no indication of water being encountered. Surface casing was set at 208 feet which would be at 6313. This would be 71 feet below than our well

In 1976, Aztec Oil drilled their Jicarilla B #4A (30-039-21239) about 450 feet South of our location. It was at an elevation of 6520 with no indication of water being encountered. Surface casing was set at 223 feet which would be at 6287. This would be 56 feet below than our well

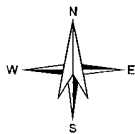
The groundwater at our well site would be greater than 50 feet at a minimum. This should allow ample protection for any groundwater in the area.

Appendix 01

U.S. 7.5 Minute TOPO Map



0 500 1000ft



Petroleum Recovery
Research Center

TOPO - Jicarilla Apache Tribal 151 #7E

Figure: 01

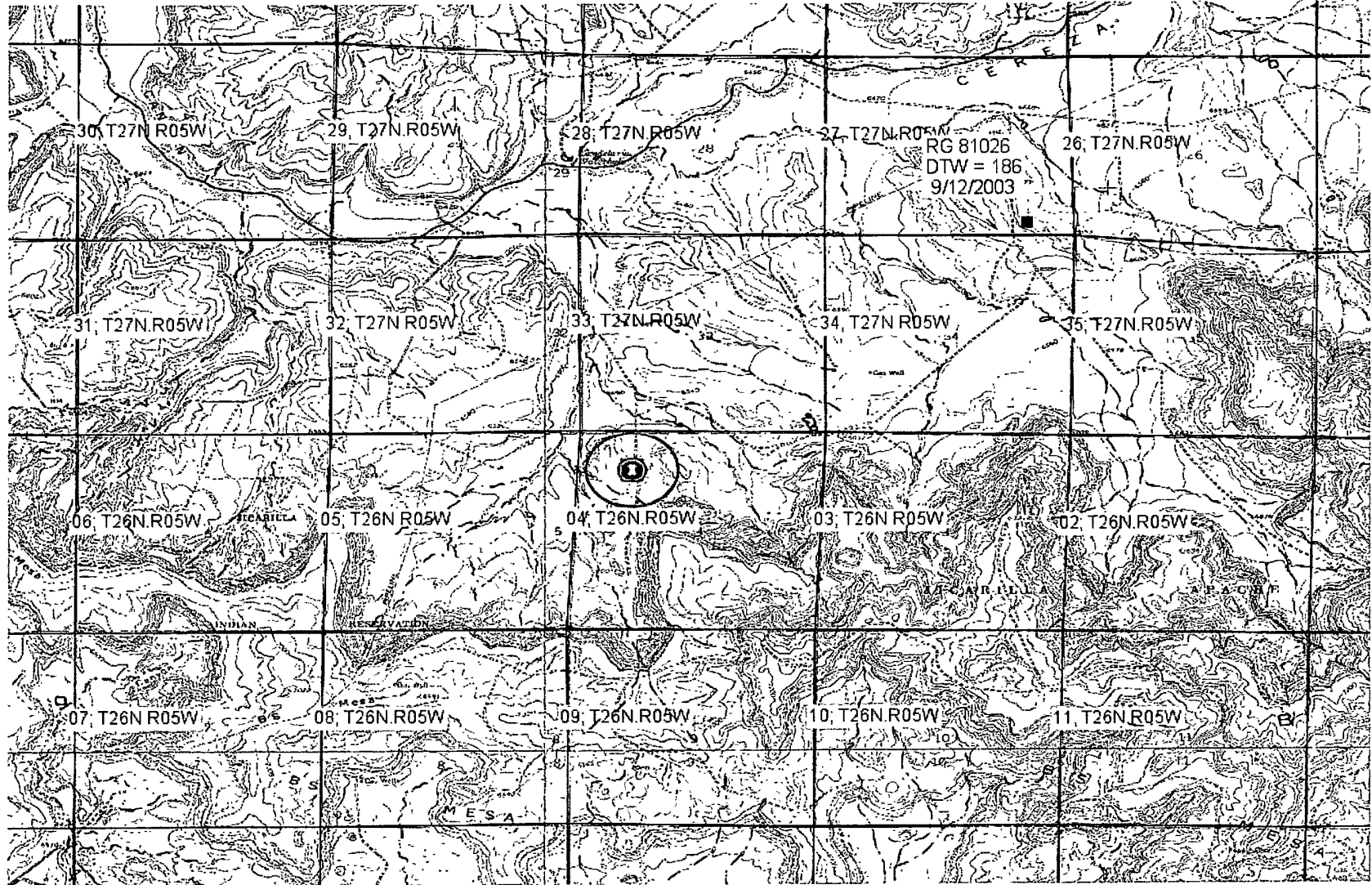
D - Sec 04, 26N, 05W

Dec 31, 2009

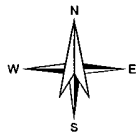
API 30-039-23163

Appendix 02

Ground Water Depth



0 2000 4000ft



Petroleum Recovery
Research Center

OSE Water Wells - Jicarilla Apache Tribal 151 #7E

Figure: 02

D - Sec 04, 26N, 05W

Dec 31, 2009

API 30-039-23163



New Mexico Office of the State Engineer

Water Right Summary



WR File Number: RG 81026
Primary Purpose: STK 72-12-1 LIVESTOCK WATERING
Primary Status: PMT PERMIT
Total Acres:
Total Diversion: 3
Owner: BUREAU OF LAND MANAGEMENT
Contact: DALE WIRTH

Documents on File

Doc	File/Act	Status			Transaction Desc.	From/To	Acres	Diversion	Consumptive
		1	2	3					
72121	2003-09-02	PMT	LOG	PRC	RG 81026	T		3	

Point of Diversion

(NAD83 UTM in meters)

Pod Number	Source	Q Q Q			X	Y	Other Location Desc
		64	16	4			
RG 81026	Shallow	3	4	4	27	27N 05W	290530 4046294* LIVESTOCK WELL

An () after northing value indicates UTM location was derived from PLSS - see Help

The data is furnished by the NMOSE/ISC and is accepted by the recipient with the expressed understanding that the OSE/ISC make no warranties, expressed or implied, concerning the accuracy, completeness, reliability, usability, or suitability for any particular purpose of the data.



New Mexico Office of the State Engineer

Point of Diversion Summary

(quarters are 1=NW 2=NE 3=SW 4=SE)
(quarters are smallest to largest) (NAD83 UTM in meters)

POD Number	Q64 Q16 Q4	Sec	Tws	Rng	X	Y
RG 81026	3 4 4	27	27N	05W	290530	4046294*

Driller License: SUNBELT DRILLING, LLC

Driller Name:

Source: Shallow

Drill Start Date: 09/12/2003

Drill Finish Date: 09/16/2003

Log File Date: 10/01/2003

PCW Received Date:

Pump Type:

Pipe Discharge Size:

Casing Size: 5.00

Estimated Yield: 3

Depth Well: 460 feet

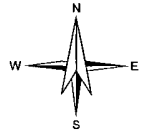
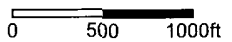
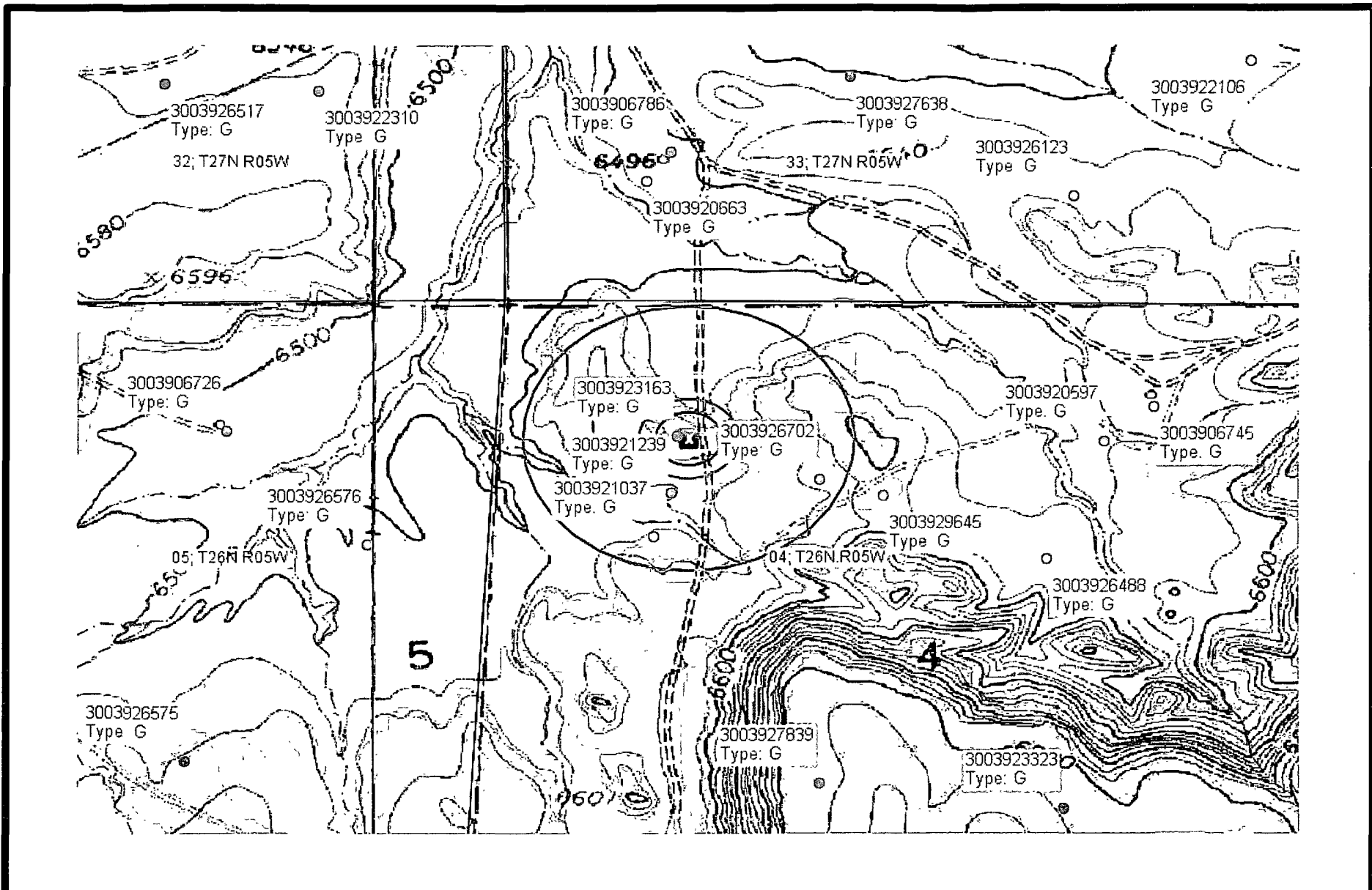
Depth Water: 186 feet

Water Bearing Stratifications:	Top	Bottom	Description
	180	195	Sandstone/Gravel/Conglomerate
	430	460	Sandstone/Gravel/Conglomerate

Casing Perforations:	Top	Bottom
	412	452

*UTM location was derived from PLSS - see Help

The data is furnished by the NMOSE/ISC and is accepted by the recipient with the expressed understanding that the OSE/ISC make no warranties, expressed or implied, concerning the accuracy, completeness, reliability, usability, or suitability for any particular purpose of the data.



Petroleum Recovery
Research Center

Offset Gas Wells - Jicarilla Apache Tribal 151 #7E

Figure: 2a

D - Sec 04, 26N, 05W

Dec 31, 2009

API 30-039-23163

DISTRICT I
P.O. Box 1980, Hobbs, N.M. 88241-1980

DISTRICT II
P.O. Drawer DD, Artesia, N.M. 88211-0719

DISTRICT III
1000 Rio Brazos Rd., Aztec, N.M. 87410

DISTRICT IV
PO Box 2088, Santa Fe, NM 87504-2088

State of New Mexico
Energy, Minerals & Natural Resources Department

OIL CONSERVATION DIVISION
P.O. Box 2088
Santa Fe, NM 87504-2088

Form C-102
Revised February 21, 1994
Instructions on back
Submit to Appropriate District Office
State Lease - 4 Copies
Fee Lease - 3 Copies

AMENDED REPORT

WELL LOCATION AND ACREAGE DEDICATION PLAT

¹ API Number 30-039-26702		² Pool Code 72319	³ Pool Name Blanco Mesaverde
⁴ Property Code I8476	⁵ Property Name ARIZONA JICARILLA B		⁶ Well Number 4B
⁷ GRID No. 14538	⁸ Operator Name BURLINGTON RESOURCES OIL & GAS INC.		⁹ Elevation 6554

¹⁰ Surface Location

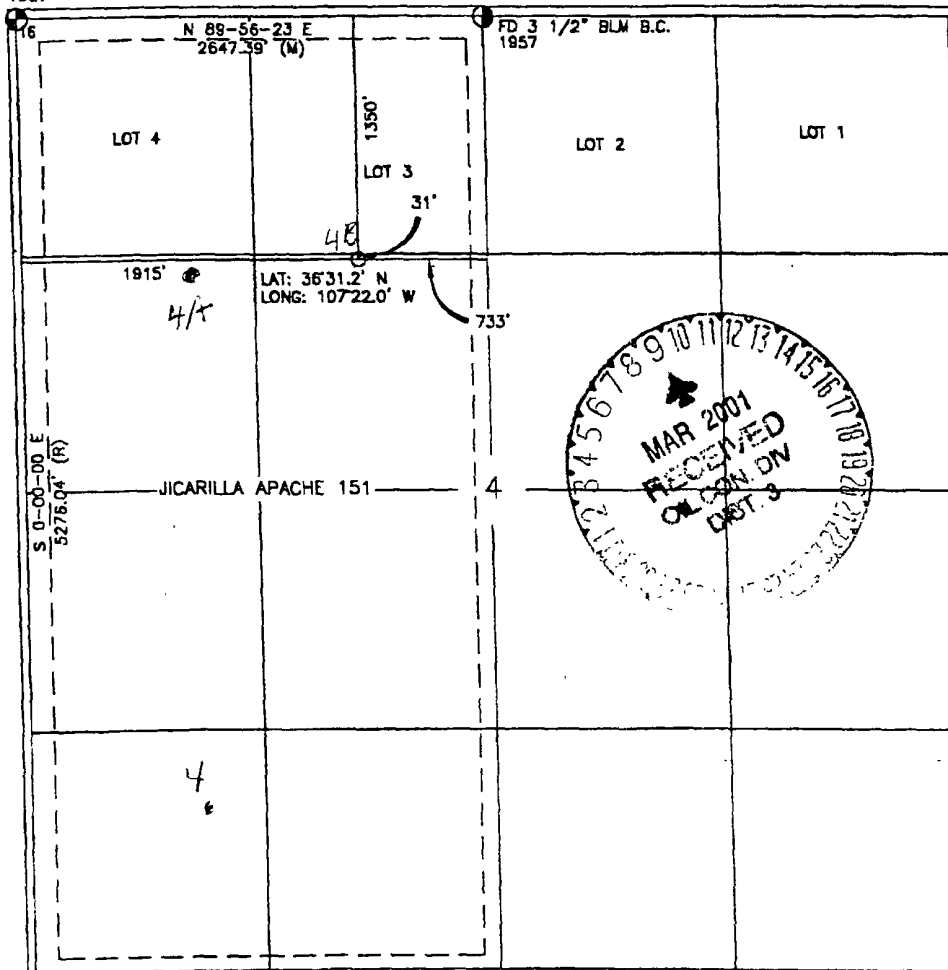
UL or lot no.	Section	Township	Range	Lot Idn	Feet from the	North/South line	Feet from the	East/West line	County
F	4	26-N	5-W		1350	NORTH	1915	WEST	RIO ARRIBA

¹¹ Bottom Hole Location if Different From Surface

UL or lot no.	Section	Township	Range	Lot Idn	Feet from the	North/South line	Feet from the	East/West line	County

¹² Dedicated Acres: MV-W.319.77
¹³ Joint or Infill: _____
¹⁴ Consolidation Code: _____
¹⁵ Order No.: _____

NO ALLOWABLE WILL BE ASSIGNED TO THIS COMPLETION UNTIL ALL INTERESTS HAVE BEEN CONSOLIDATED OR A NON-STANDARD UNIT HAS BEEN APPROVED BY THE DIVISION



17 OPERATOR CERTIFICATION
I hereby certify that the information contained herein is true and complete to the best of my knowledge and belief

Signature: Peggy Cole
Printed Name: Peggy Cole
Regulatory Supervisor Title: _____
Date: 1-5-01

18 SURVEYOR CERTIFICATION
I hereby certify that the well location shown on this plat was plotted from field notes of actual surveys made by me or under my supervision, and that the same is true and correct to the best of my belief.

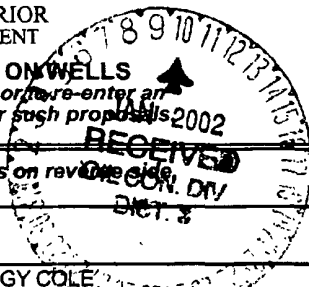
Date of Survey: 9-20-00
Signature and Seal of Professional Surveyor: [Signature]
Professional Land Surveyor Seal: 8894
Certificate Number: _____

UNITED STATES
DEPARTMENT OF THE INTERIOR
BUREAU OF LAND MANAGEMENT

FORM APPROVED
OMB NO. 1004-0135
Expires: November 30, 2000

SUNDRY NOTICES AND REPORTS ON WELLS
Do not use this form for proposals to drill or re-enter an abandoned well. Use form 3160-3 (APD) for such proposals.

SUBMIT IN TRIPLICATE - Other instructions on reverse side.



1. Type of Well <input type="checkbox"/> Oil Well <input checked="" type="checkbox"/> Gas Well <input type="checkbox"/> Other		5. Lease Serial No. JIC 151
2. Name of Operator BURLINGTON RESOURCES OIL & GAS		6. If Indian, Allottee or Tribe Name JICARILLA APACHE
3a. Address 3401 EAST 30TH FARMINGTON, NM 87402		7. If Unit or CA/Agreement, Name and/or No.
3b. Phone No. (include area code) Ph: 505.326.9727 Fx: 505.326.9563		8. Well Name and No. ARIZONA JICARILLA B 4B
4. Location of Well (Footage, Sec., T., R., M., or Survey Description) Sec 4 T26N R5W SENW 1350FNL 1915FWL		9. API Well No. 30-039-26702
		10. Field and Pool, or Exploratory BLANCO MESAVERDE
		11. County or Parish, and State RIO ARRIBA COUNTY, NM

12. CHECK APPROPRIATE BOX(ES) TO INDICATE NATURE OF NOTICE, REPORT, OR OTHER DATA

TYPE OF SUBMISSION	TYPE OF ACTION			
<input type="checkbox"/> Notice of Intent	<input type="checkbox"/> Acidize	<input type="checkbox"/> Deepen	<input type="checkbox"/> Production (Start/Resume)	<input type="checkbox"/> Water Shut-Off
<input checked="" type="checkbox"/> Subsequent Report	<input type="checkbox"/> Alter Casing	<input type="checkbox"/> Fracture Treat	<input type="checkbox"/> Reclamation	<input type="checkbox"/> Well Integrity
<input type="checkbox"/> Final Abandonment Notice	<input type="checkbox"/> Casing Repair	<input type="checkbox"/> New Construction	<input type="checkbox"/> Recomplete	<input checked="" type="checkbox"/> Other Well Spud
	<input type="checkbox"/> Change Plans	<input type="checkbox"/> Plug and Abandon	<input type="checkbox"/> Temporarily Abandon	
	<input type="checkbox"/> Convert to Injection	<input type="checkbox"/> Plug Back	<input type="checkbox"/> Water Disposal	

13. Describe Proposed or Completed Operation (clearly state all pertinent details, including estimated starting date of any proposed work and approximate duration thereof. If the proposal is to deepen directionally or recomplate horizontally, give subsurface locations and measured and true vertical depths of all pertinent markers and zones. Attach the Bond under which the work will be performed or provide the Bond No. on file with BLM/BIA. Required subsequent reports shall be filed within 30 days following completion of the involved operations. If the operation results in a multiple completion or recompletion in a new interval, a Form 3160-4 shall be filed once testing has been completed. Final Abandonment Notices shall be filed only after all requirements, including reclamation, have been completed, and the operator has determined that the site is ready for final inspection.)

12-3-01 MIRU. Spud well @ 11:00 p.m. 11-3-01. Drilling ahead.
12-4-01 Drill to 236'. Circ hole clean. TOO. (Al Atencio, BLM on location). TIH w/5 jts 9 5/8"
32.3# H-40 ST&C csg, set @ 229'. Pump 10 bbl wtr ahead. Cmtd w/185 sx Class "B" neat cmt w/3% calcium chloride, 0.25 pps Celloflake (222 cu.ft.). Displace w/15 bbl wtr. Circ 15 bbl cmt to surface. WOC. (Bryce Hammond & Rod Velarde, Jicarilla Tribe on location). PT csg & BOP to 600 psi/30 min, OK. Drilling ahead.

APD ROW related

14. I hereby certify that the foregoing is true and correct.
Electronic Submission #9654 verified by the BLM Well Information System
For BURLINGTON RESOURCES OIL & GAS, sent to the Rio Puerco

Name (Printed/Typed) PEGGY COLE	Title REPORT AUTHORIZER
Signature <i>Peggy Cole</i> (Electronic Submission)	Date 12/06/2001

THIS SPACE FOR FEDERAL OR STATE OFFICE USE

Approved By <u>Is/ Patricia M. Hester</u>	Title <u>Assistant Director</u>	Date <u>12/11/01</u>
Conditions of approval, if any, are attached. Approval of this notice does not warrant or certify that the applicant holds legal or equitable title to those rights in the subject lease which would entitle the applicant to conduct operations thereon.		Office

Title 18 U.S.C. Section 1001 and Title 43 U.S.C. Section 1212, make it a crime for any person knowingly and willfully to make to any department or agency of the United States any false, fictitious or fraudulent statements or representations as to any matter within its jurisdiction.

**** ORIGINAL ** ORIGINAL ** ORIGINAL ** ORIGINAL ** ORIGINAL ** ORIGINAL ** ORIGINAL ****

K

**UNITED STATES
DEPARTMENT OF THE INTERIOR
GEOLOGICAL SURVEY**

SUBMIT IN TRIPLICATE*
(Other instructions on re-
verse side)

Form approved.
Budget Bureau No. 42-R1424.

21037

SUNDRY NOTICES AND REPORTS ON WELLS

(Do not use this form for proposals to drill or to deepen or plug back to a different reservoir.
Use "APPLICATION FOR PERMIT—" for such proposals.)

<p>1. <input type="checkbox"/> OIL WELL <input type="checkbox"/> GAS WELL <input checked="" type="checkbox"/> OTHER</p> <p>2. NAME OF OPERATOR Aztec Oil & Gas Company</p> <p>3. ADDRESS OF OPERATOR P. O. Drawer 570, Farmington, New Mexico</p> <p>4. LOCATION OF WELL (Report location clearly and in accordance with any State requirements.* See also space 17 below.) At surface 1780' FNL & 930' FWL Section 4-26N-5W</p>		<p>5. LEASE DESIGNATION AND SERIAL NO. Jicarilla Contract #151</p> <p>6. IF INDIAN, ALLOTTEE OR TRIBE NAME Jicarilla Apache</p> <p>7. UNIT AGREEMENT NAME</p> <p>8. FARM OR LEASE NAME Arizona Jicarilla "B"</p> <p>9. WELL NO. #7</p> <p>10. FIELD AND POOL, OR WILDCAT Tapacitos Pictured Cliffs</p> <p>11. SEC., T., R., M., OR BLK. AND SURVEY OR AREA Section 4-26N-5W</p> <p>12. COUNTY OR PARISH Rio Arriba</p> <p>13. STATE New Mexico</p>
14. PERMIT NO.	15. ELEVATIONS (Show whether DF, RT, GR, etc.) 6521 Ground Level	18. STATE

16. Check Appropriate Box To Indicate Nature of Notice, Report, or Other Data

NOTICE OF INTENTION TO:		SUBSEQUENT REPORT OF:	
TEST WATER SHUT-OFF <input type="checkbox"/>	PULL OR ALTER CASING <input type="checkbox"/>	WATER SHUT-OFF <input checked="" type="checkbox"/>	REPAIRING WELL <input type="checkbox"/>
FRACTURE TREAT <input type="checkbox"/>	MULTIPLE COMPLETE <input type="checkbox"/>	FRACTURE TREATMENT <input type="checkbox"/>	ALTERING CASING <input type="checkbox"/>
SHOOT OR ACIDIZE <input type="checkbox"/>	ABANDON* <input type="checkbox"/>	SHOOTING OR ACIDIZING <input type="checkbox"/>	ABANDONMENT* <input type="checkbox"/>
REPAIR WELL <input type="checkbox"/>	CHANGE PLANS <input type="checkbox"/>	(Other) _____	SPUD REPORT <input checked="" type="checkbox"/>
(NOTE: Report results of multiple completion on Well Completion or Recompletion Report and Log form.)			

17. DESCRIBE PROPOSED OR COMPLETED OPERATIONS (Clearly state all pertinent details, and give pertinent dates, including estimated date of starting any proposed work. If well is directionally drilled, give subsurface locations and measured and true vertical depths for all markers and zones pertinent to this work.)*

11-23-74 Spudded 12 1/4" Surface Hole. Drilled To T.D. Of 228'. Ran 5 Joints Of 8-5/8" 24# Casing, Set @ 208'. Cemented With 125 Sacks Of Class "B", 3% CaCl. Cement Circulated To Surface.



18. I hereby certify that the foregoing is true and correct
 SIGNATURE *Joe C. Salmon* TITLE District Superintendent DATE November 25, 1974

(This space for Federal or State office use)

APPROVED BY _____ TITLE _____ DATE _____
 CONDITIONS OF APPROVAL, IF ANY:

*See Instructions on Reverse Side

21037

NEW MEXICO OIL CONSERVATION COMMISSION
WELL LOCATION AND ACREAGE DEDICATION PLAT

Form No. 1
Supersedes O-10
Effective 1-1-60

All distances must be from the outer boundaries of the Section

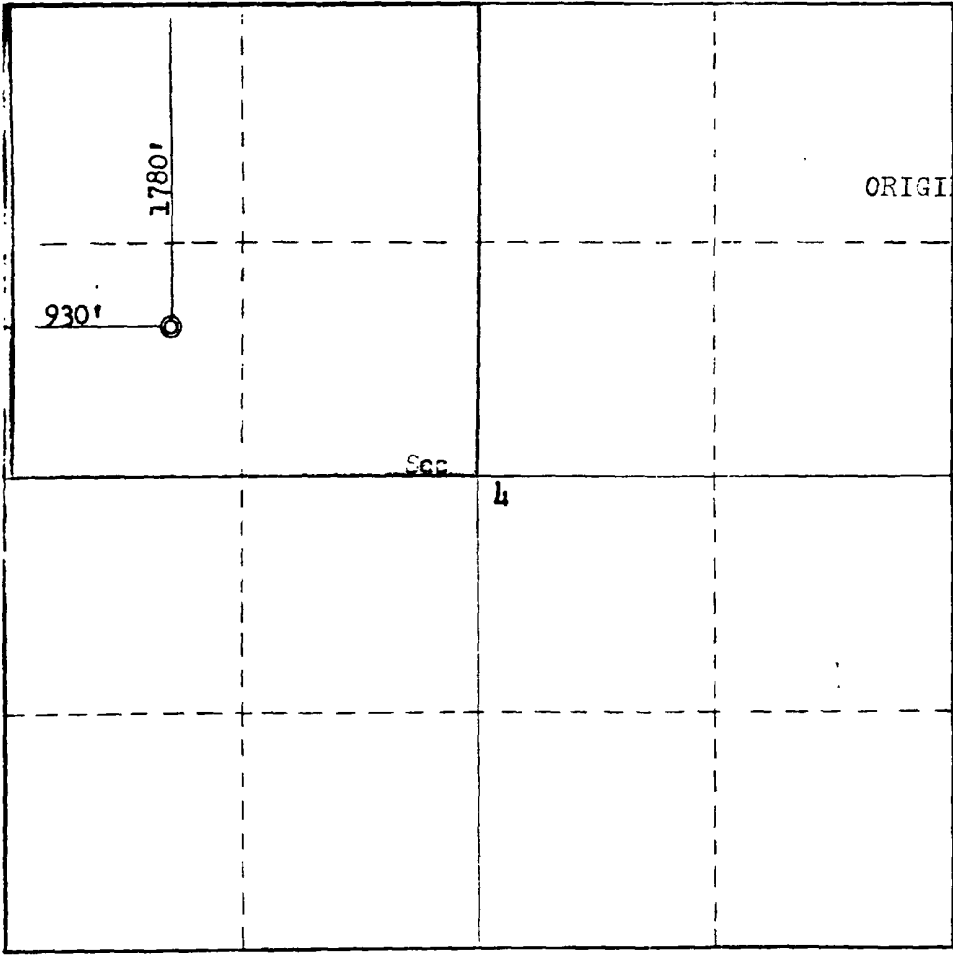
Operator Aztec Oil & Gas Company			Lease Arizona Jicarilla "B"		Well No. #7
Section Letter E	Section 4	Township 26N	Range 5W	County Rio Arriba	
Actual Footage Location of Well: 1780 feet from the North line and 930 feet from the West line					
Ground Level Elev. 6521	Producing Formation Pictured Cliffs		Pool Tapacito S RIMCO	Dedicated Acreage: 159.77 160 ACRES	

1. Outline the acreage dedicated to the subject well by colored pencil or hachure marks on the plat below.
2. If more than one lease is dedicated to the well, outline each and identify the ownership thereof (both as to working interest and royalty).
3. If more than one lease of different ownership is dedicated to the well, have the interests of all owners been consolidated by communitization, unitization, force-pooling, etc?

Yes No If answer is "yes," type of consolidation _____

If answer is "no," list the owners and tract descriptions which have actually been consolidated. (Use reverse side of this form if necessary.) _____

No allowable will be assigned to the well until all interests have been consolidated (by communitization, unitization, forced-pooling, or otherwise) or until a non-standard unit, eliminating such interests, has been approved by the Commission.



CERTIFICATION

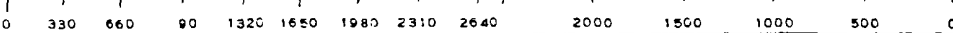
I hereby certify that the information contained herein is true and complete to the best of my knowledge and belief.

ORIGINAL SIGNED BY JOE C. SALMON

Name Joe C. Salmon
Position District Superintendent
Company Aztec Oil & Gas Company
Date October 22, 1974

I hereby certify that the well location shown on this plat was plotted from field notes of actual surveys made by me or under my supervision, and that the same is true and correct to the best of my knowledge and belief.

Date Surveyed October 17, 1974
Registered Professional Engineer and/or Land Surveyor Fred B. Kern, Jr.
Certificate No. 3950



**UNITED STATES
DEPARTMENT OF THE INTERIOR
GEOLOGICAL SURVEY**

SUBMIT IN TRIPPLICATE*
(Other instructions on re-
verse side)

Form approved.
Budget Bureau No. 49-21424.

5. LEASE DESIGNATION AND SERIAL NO.
Jicarilla Contract #151

6. IF INDIAN, ALLOTTEE OR TRIBE NAME

SUNDRY NOTICES AND REPORTS ON WELLS

(Do not use this form for proposals to drill or to deepen or plug back to a different reservoir.
Use "APPLICATION FOR PERMIT—" for such proposals.)

<p>1. OIL WELL <input type="checkbox"/> GAS WELL <input checked="" type="checkbox"/> OTHER 21239</p>	<p>7. UNIT AGREEMENT NAME</p>	<p>8. FARM OR LEASE NAME Arizona Jicarilla "B"</p>
<p>2. NAME OF OPERATOR Aztec Oil & Gas Company</p>	<p>9. WELL NO. #4-A</p>	<p>10. FIELD AND POOL, OR WILDCAT Blanco Mesa Verde</p>
<p>3. ADDRESS OF OPERATOR P. O. Drawer 570, Farmington, New Mexico</p>	<p>11. SEC., T., R., M., OR BLM. AND SURVEY OR AREA Section 4, T26N, R5W</p>	<p>12. COUNTY OR PARISH 13. STATE Rio Arriba New Mexico</p>
<p>4. LOCATION OF WELL (Report location clearly and in accordance with any State requirements.* See also space 17 below.) At surface 1450' FNL & 1030' FWL Section 4, T26N, R5W</p>	<p>14. PERMIT NO.</p>	<p>15. ELEVATIONS (Show whether DF, RT, GR, etc.) 6520 GL</p>

16. **Check Appropriate Box To Indicate Nature of Notice, Report, or Other Data**

NOTICE OF INTENTION TO:		SUBSEQUENT REPORT OF:	
TEST WATER SHUT-OFF <input type="checkbox"/>	PULL OR ALTER CASING <input type="checkbox"/>	WATER SHUT-OFF <input type="checkbox"/>	REPAIRING WELL <input type="checkbox"/>
FRACTURE TREAT <input type="checkbox"/>	MULTIPLE COMPLETE <input type="checkbox"/>	FRACTURE TREATMENT <input type="checkbox"/>	ALTERING CASING <input type="checkbox"/>
SHOOT OR ACIDIZE <input type="checkbox"/>	ABANDON* <input type="checkbox"/>	SHOOTING OR ACIDIZING <input type="checkbox"/>	ABANDONMENT* <input type="checkbox"/>
REPAIR WELL <input type="checkbox"/>	CHANGE PLANS <input type="checkbox"/>	(Other) CASING REPORT <input checked="" type="checkbox"/>	
(Other) <input type="checkbox"/>		(NOTE: Report results of multiple completion on Well Completion or Recompletion Report and Log form.)	

17. DESCRIBE PROPOSED OR COMPLETED OPERATIONS (Clearly state all pertinent details, and give pertinent dates, including estimated date of starting any proposed work. If well is directionally drilled, give subsurface locations and measured and true vertical depths for all markers and zones pertinent to this work.)*

9-11-76 Ran 5 joints of 9-5/8", 36#, K-55 casing. Total 212.58'. Set at 223' RKB. Cemented with 190 sacks of Class "B" with 1/4# gel flake per sack and 3% CaCl. Plug down at 11:30 A.M.



I hereby certify that the foregoing is true and correct

SIGNED

[Signature]

TITLE **District Production Manager** DATE **September 13, 1976**

(This space for Federal or State office use)

APPROVED BY

TITLE

DATE

CONDITIONS OF APPROVAL, IF ANY:

*See Instructions on Reverse Side

NEW MEXICO OIL CONSERVATION COMMISSION
WELL LOCATION AND ACREAGE DEDICATION PLAT

Form C-102
Supersedes C-128
Effective 1-1-65

21239

All distances must be from the outer boundaries of the Section.

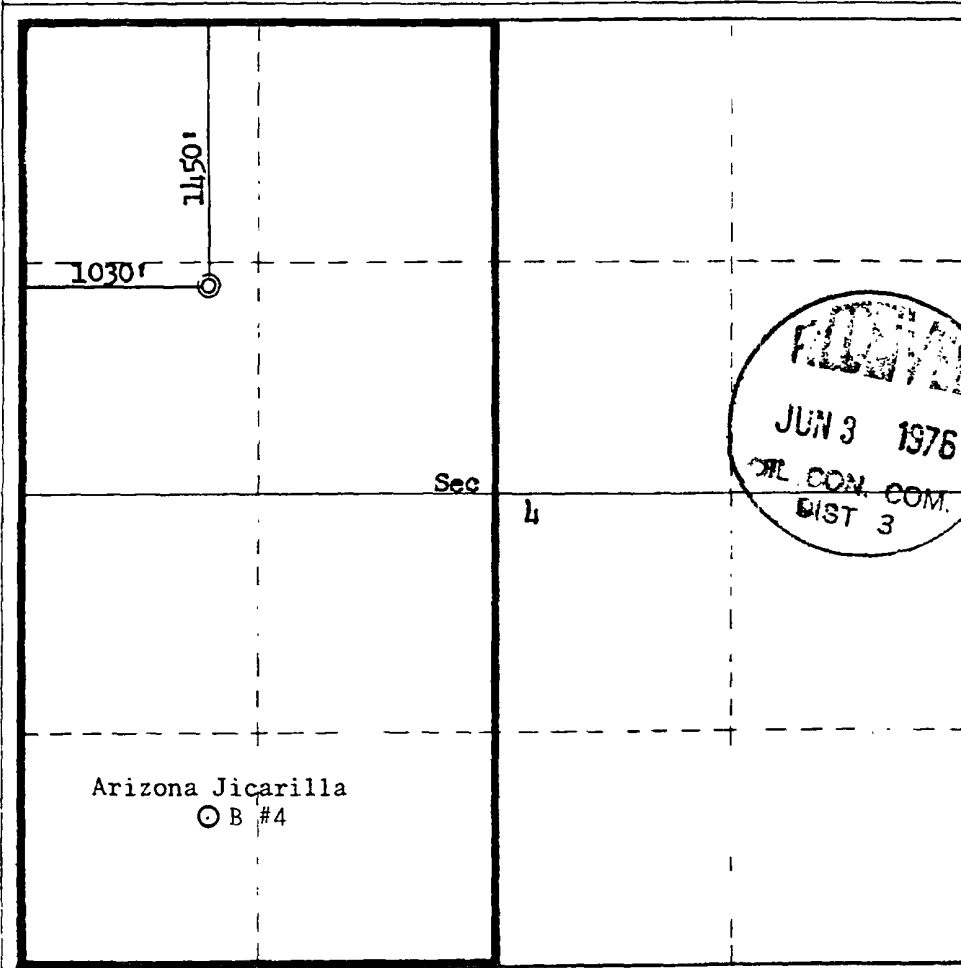
Operator Aztec Oil & Gas Company			Lease Arizona Jicarilla "B"			Well No. 4A		
Unit Letter E	Section 4	Township 26N	Range 5W	County Rio Arriba				
Actual Footage Location of Well: 1150 feet from the North line and 1030 feet from the West line								
Ground Level Elev. 6520	Producing Formation Mesa Verde			Pool Blanco	Dedicated Acreage: W / 319.77 Acres			

1. Outline the acreage dedicated to the subject well by colored pencil or hachure marks on the plat below.
2. If more than one lease is dedicated to the well, outline each and identify the ownership thereof (both as to working interest and royalty).
3. If more than one lease of different ownership is dedicated to the well, have the interests of all owners been consolidated by communitization, unitization, force-pooling, etc?

Yes No If answer is "yes," type of consolidation _____

If answer is "no," list the owners and tract descriptions which have actually been consolidated. (Use reverse side of this form if necessary.) _____

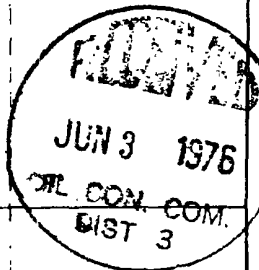
No allowable will be assigned to the well until all interests have been consolidated (by communitization, unitization, forced-pooling, or otherwise) or until a non-standard unit, eliminating such interests, has been approved by the Commission.



CERTIFICATION

I hereby certify that the information contained herein is true and complete to the best of my knowledge and belief.

Name
L. O. Van Ryan
Position
District Superintendent
Company
Aztec Oil & Gas Company
Date
May 27, 1976



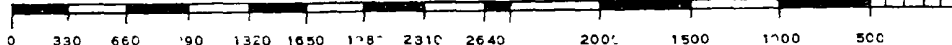
I hereby certify that the well location shown on this plat was plotted from field notes of actual surveys made by me or under my supervision, and that the same is true and correct to the best of my knowledge and belief.

Date Surveyed
May 26, 1976
Registered Professional Engineer and/or Land Surveyor

Fred B. Kerr Jr.
Fred B. Kerr Jr.

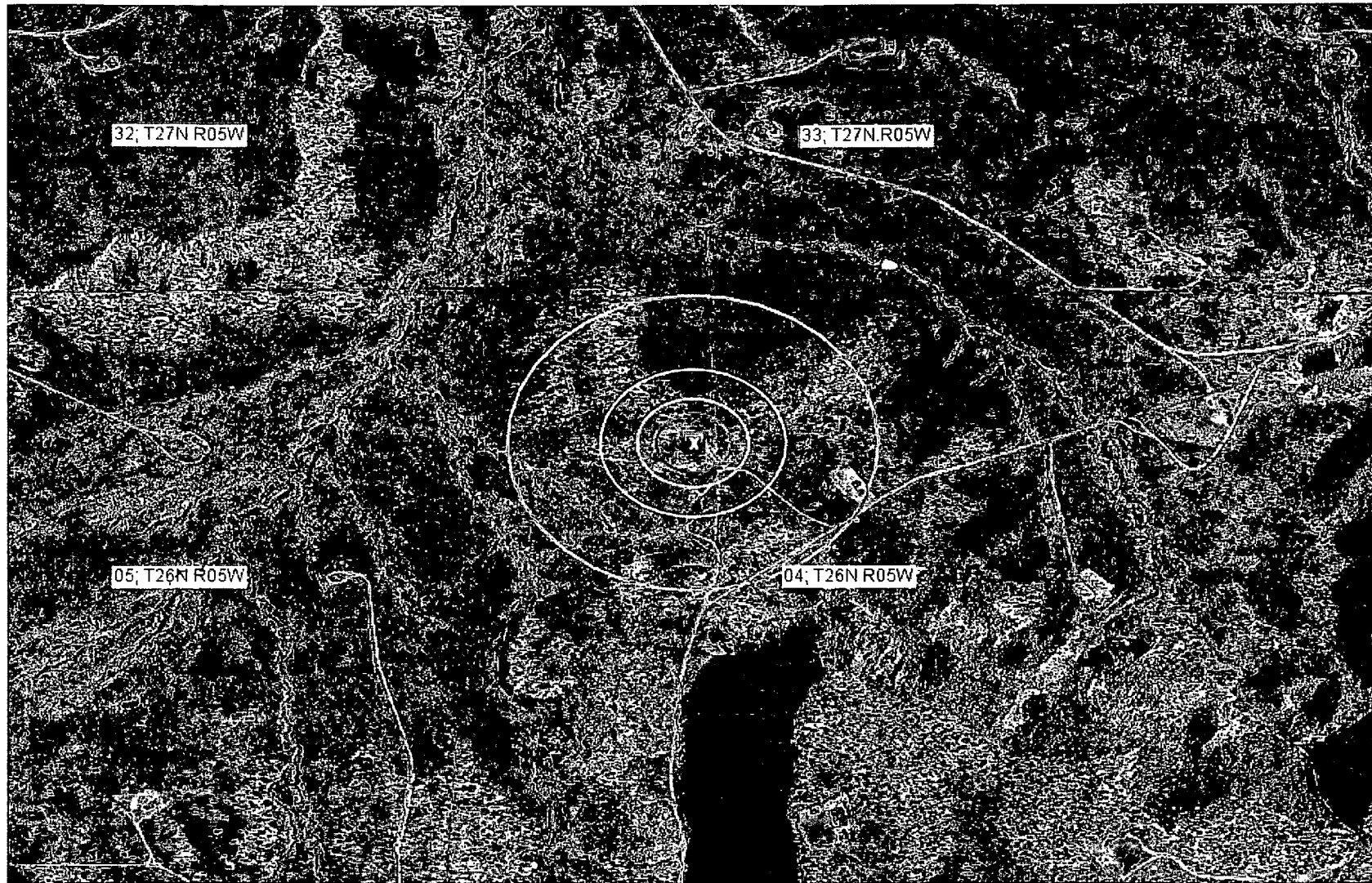
Certificate No.

3950

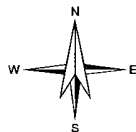


Appendix 03

Aerial Photo



0 500 1000ft



Petroleum Recovery
Research Center

Aerial - Jicarilla Apache Tribal 151 #7E

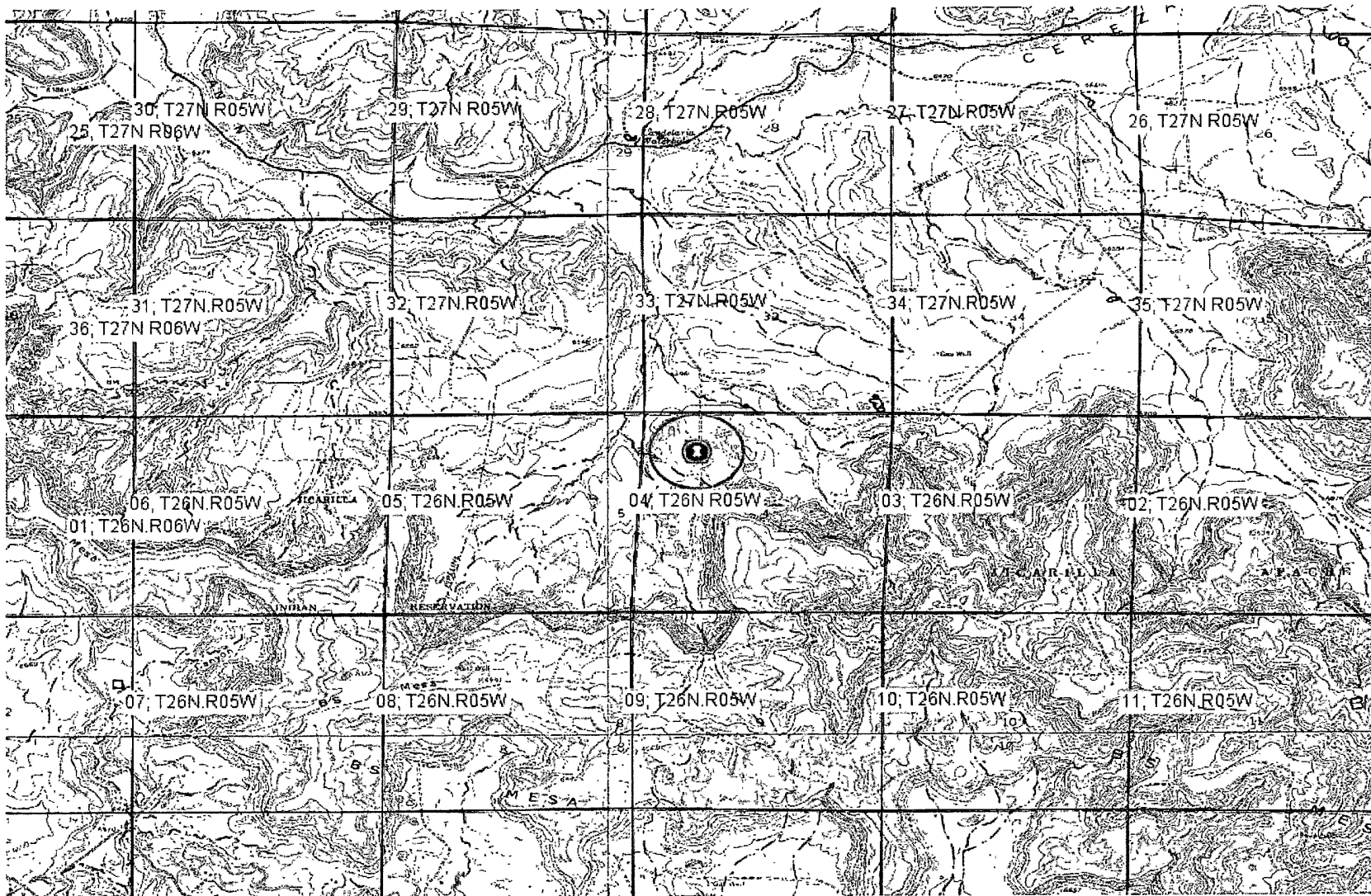
Figure: 03

D - Sec 04, 26N, 05W

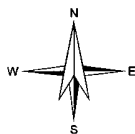
Dec 31, 2009

Appendix 04

Municipality Boundary Map



0 2000 4000ft



Petroleum Recovery
Research Center

Municipalities - Jicarilla Apache Tribal 151 #7E

Figure: 04

D - Sec 04, 26N, 05W

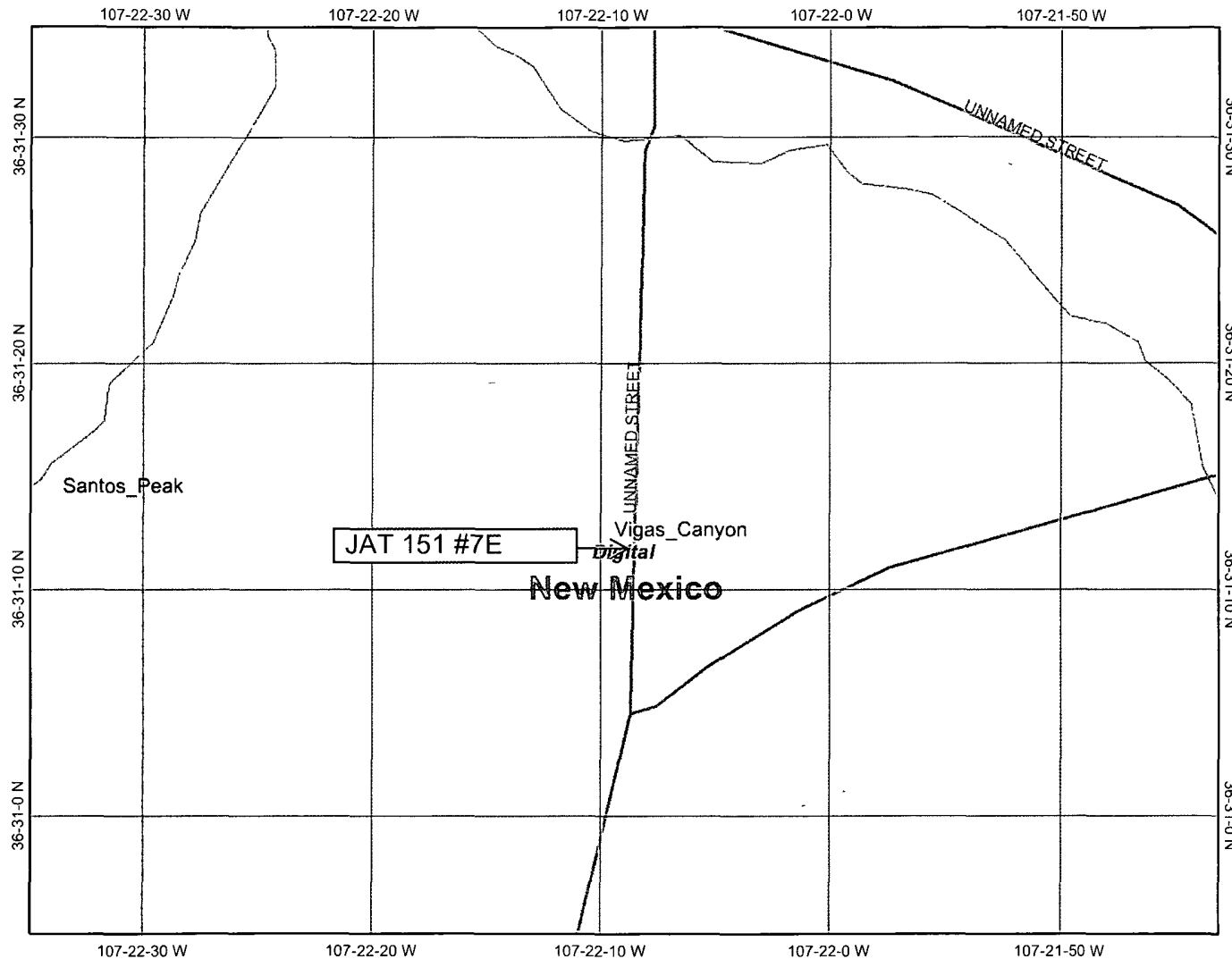
Dec 31, 2009

API 30-039-23163

Appendix 05

U.S. Fish & Wildlife Wetland Identification Map

Internet Mapping Framework



Legend

- Ohio_wet_scan**
- 0
 - 1
 - Out of range
- Interstate**
- Major Roads**
- ~ Interstate
 - ~ Other Road
 - ~ Interstate
 - ~ State highway
 - ~ US highway
- Roads**
- Cities
- USGS Quad Index 24K**
- Lower 48 Wetland Polygons**
- ▨ Estuarine and Marine Deepwater
 - ▨ Estuarine and Marine Wetland
 - ▨ Freshwater Emergent Wetland
 - ▨ Freshwater Forested/Shrub Wetland
 - ▨ Freshwater Pond
 - ▨ Lake
 - ▨ Other
 - ▨ Riverine
- Lower 48 Available Wetland Data**
- ~ Non-Digital
 - ~ Digital
 - ~ No Data
 - ~ Scan
- NHD Streams**
- Counties 100K
 - States 100K
 - South America
 - North America



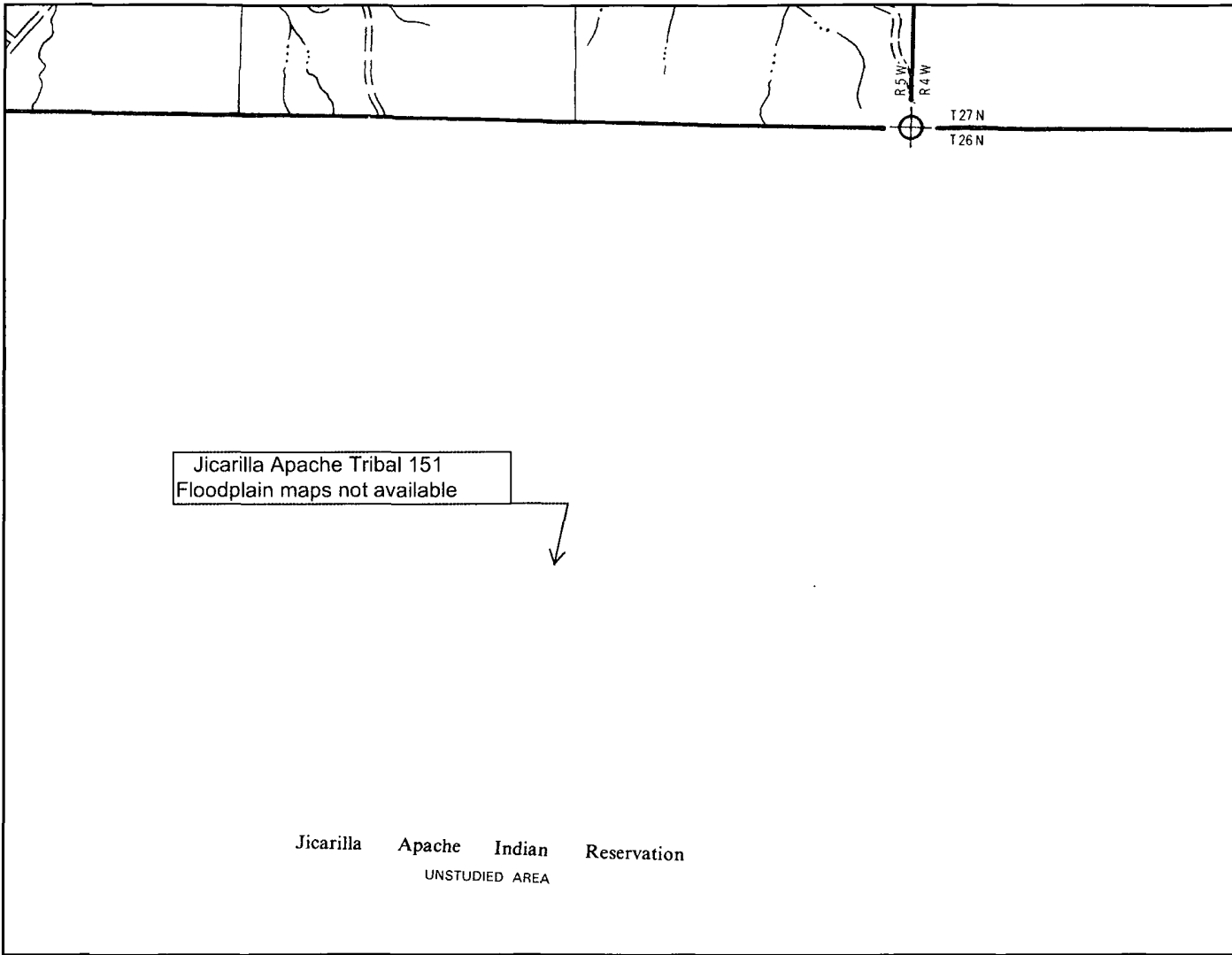
Scale: 1:8,659

Map center: 36° 31' 15" N, 107° 22' 9" W

This map is a user generated static output from an Internet mapping site and is for general reference only. Data layers that appear on this map may or may not be accurate, current, or otherwise reliable. THIS MAP IS NOT TO BE USED FOR NAVIGATION

Appendix 06

FEMA 100-year Floodplain Map

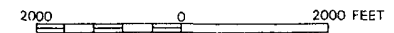


Jicarilla Apache Tribal 151
Floodplain maps not available

Jicarilla Apache Indian Reservation
UNSTUDIED AREA



APPROXIMATE SCALE

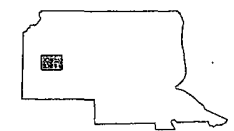


NATIONAL FLOOD INSURANCE PROGRAM

FIRM
FLOOD INSURANCE RATE MAP

RIO ARRIBA COUNTY,
NEW MEXICO
UNINCORPORATED AREAS

PANEL 550 OF 1325
(SEE MAP INDEX FOR PANELS NOT PRINTED)



PANEL LOCATION

COMMUNITY-PANEL NUMBER
350049 0550 B

EFFECTIVE DATE:
JANUARY 5, 1989

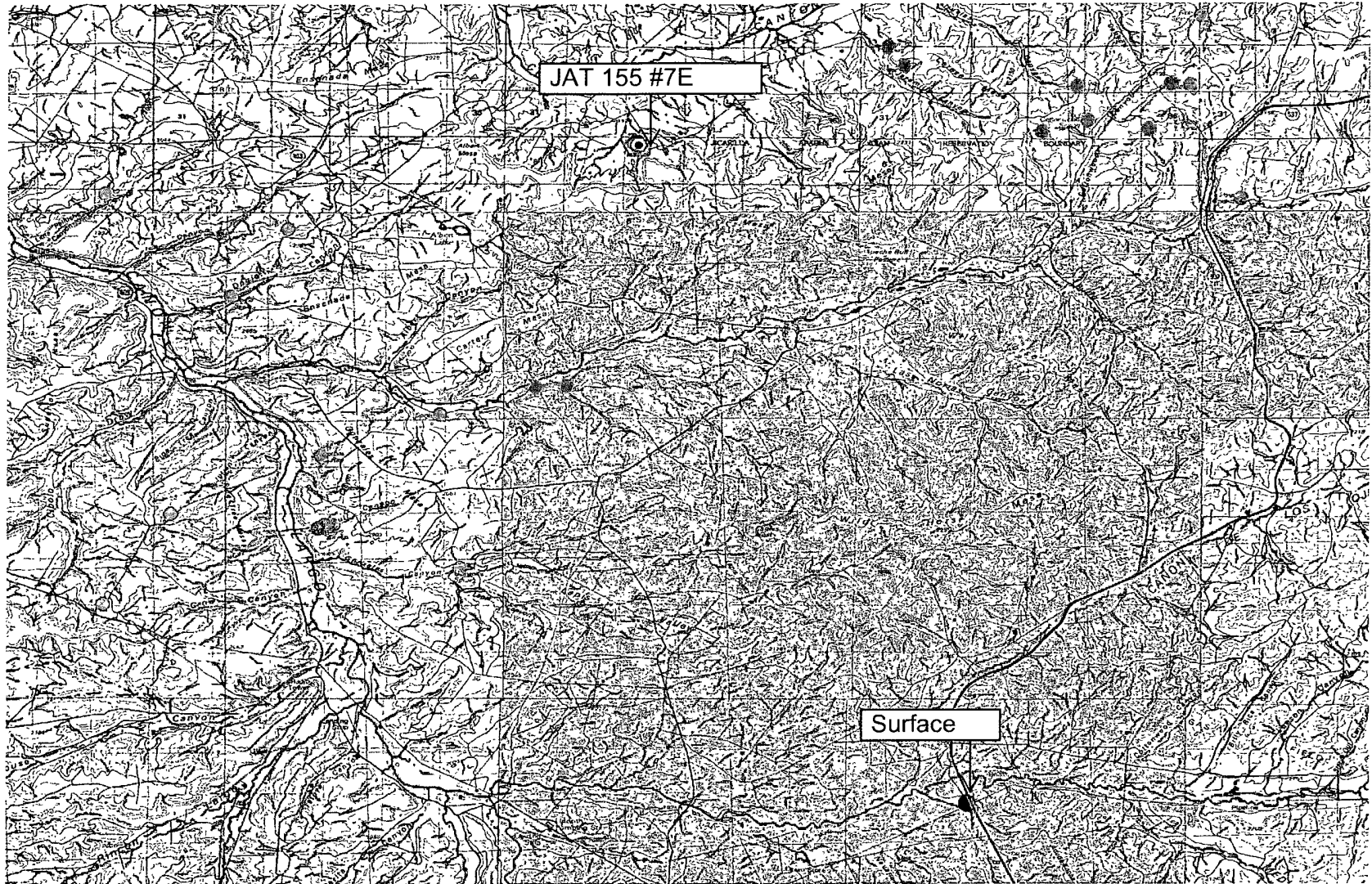


Federal Emergency Management Agency

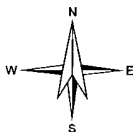
This is an official copy of a portion of the above referenced flood map. It was extracted using F-MIT On-Line. This map does not reflect changes or amendments which may have been made subsequent to the date on the title block. For the latest product information about National Flood Insurance Program flood maps check the FEMA Flood Map Store at www.msc.fema.gov

Appendix 07

Mines, Mills, & Quarries Map



0 2 4mi



Petroleum Recovery
Research Center

Mines, Mills Quarries - Jicarilla Apache Tribal 151 #7E

Figure: 07

D - Sec 04, 26N, 05W

Dec 31, 2009

API 30-039-23163

Appendix 08

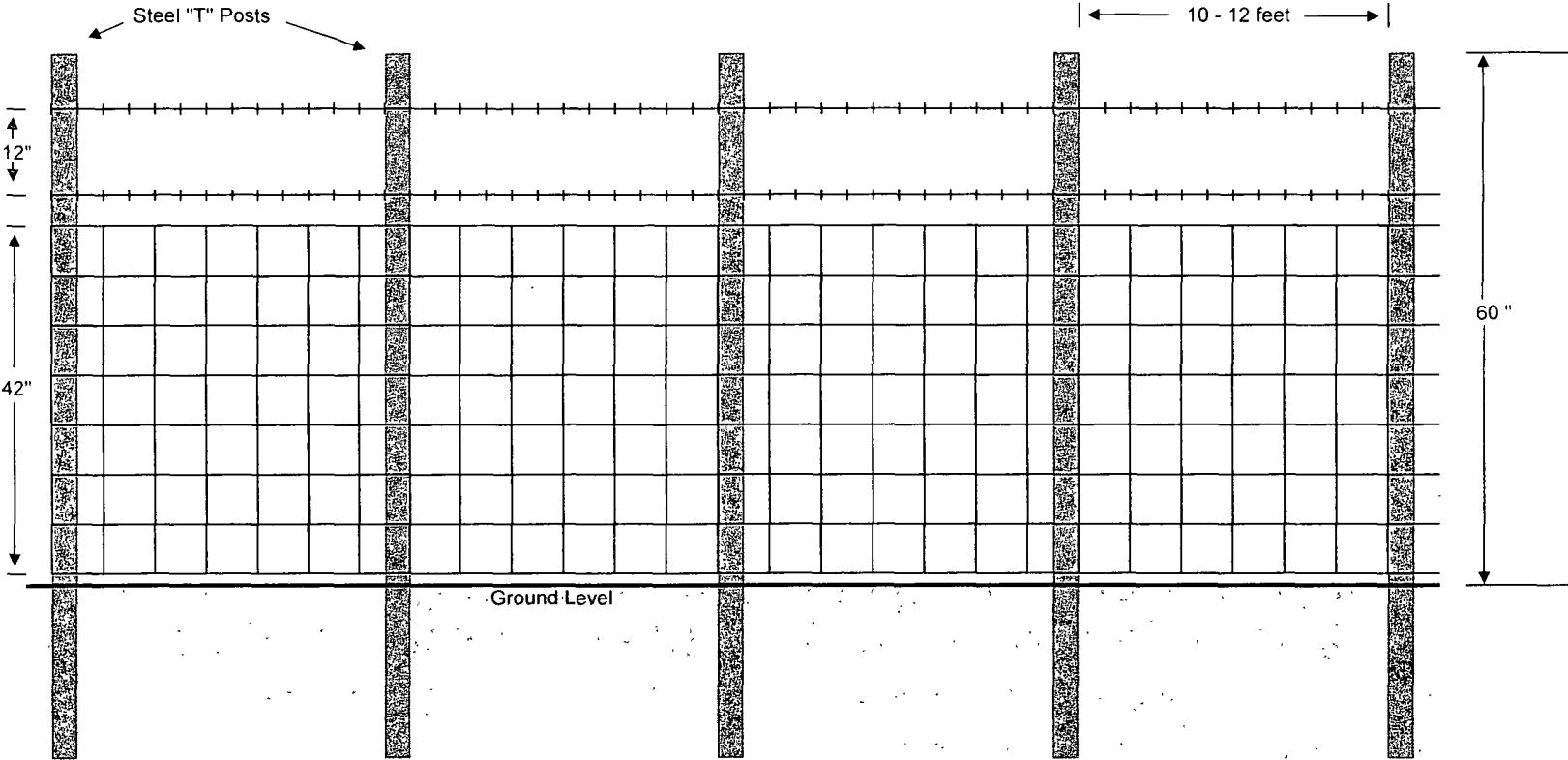
**C-102 Location Plat
Facility Inspection Sheet
Below-Grade Tank Diagram**

ENERVEST OPERATING, LLC

Proposed Alternative Fencing

Below-Grade Tank Construction

42" Hogwire Fence with 2 strands barbed-wire on top

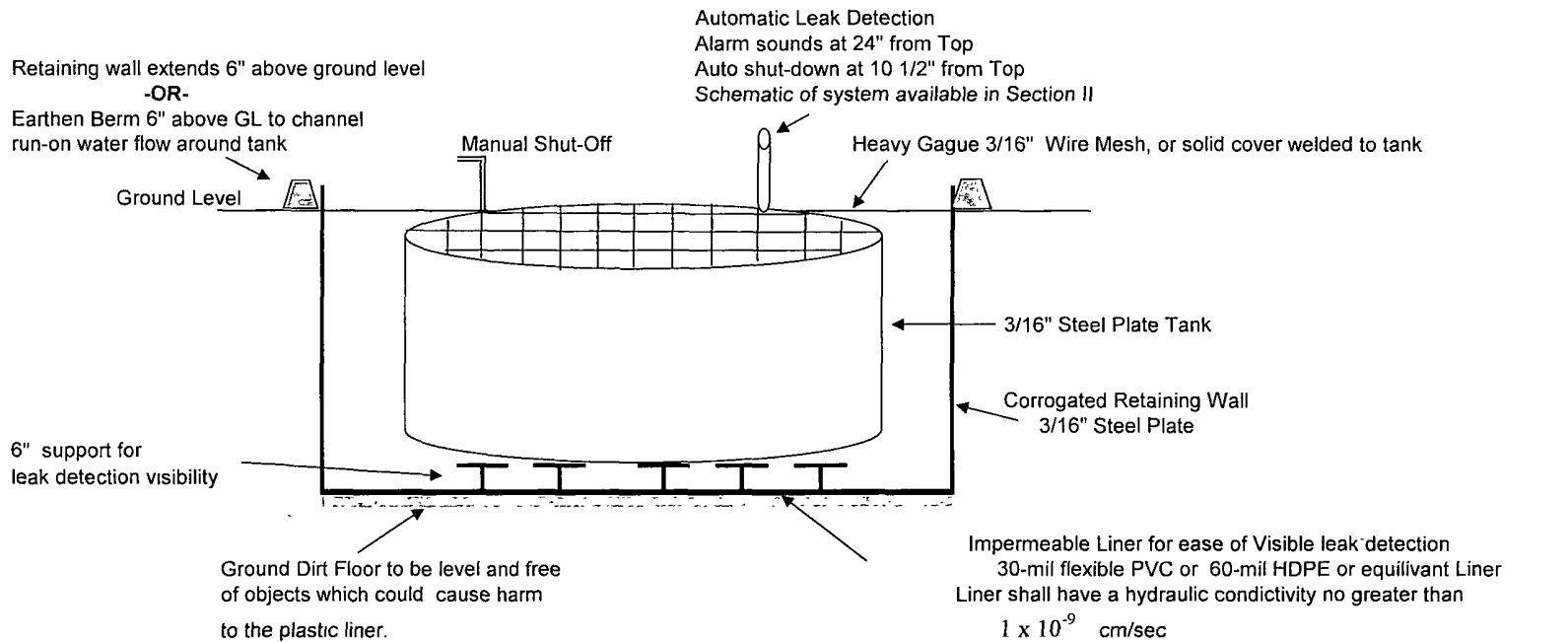




EnerVest Operating, LLC
Western Division

Below-Grade Tank System

Gravity Fed - Produced Water



Below-Grade System Components		
Capacity	Tank Size	Excavation Areas
	Dia x Height	
125 Bbl	15' x 4'	18' x 18' x 4' Square
120 Bbl	12' x 6'	18' x 4' Circular
100 Bbl	12' x 5'	18' x 5' Circular

Tank size dependent upon water production & road conditions
Excavation Area size dependent upon tank size

OIL CONSERVATION DIVISION

STATE OF NEW MEXICO
 ENERGY AND MINERALS DEPARTMENT

P. O. BOX 2048
 SANTA FE, NEW MEXICO 87501

Form C-107
 Revised 10-1-78

All distances must be from the outer boundaries of the Section.

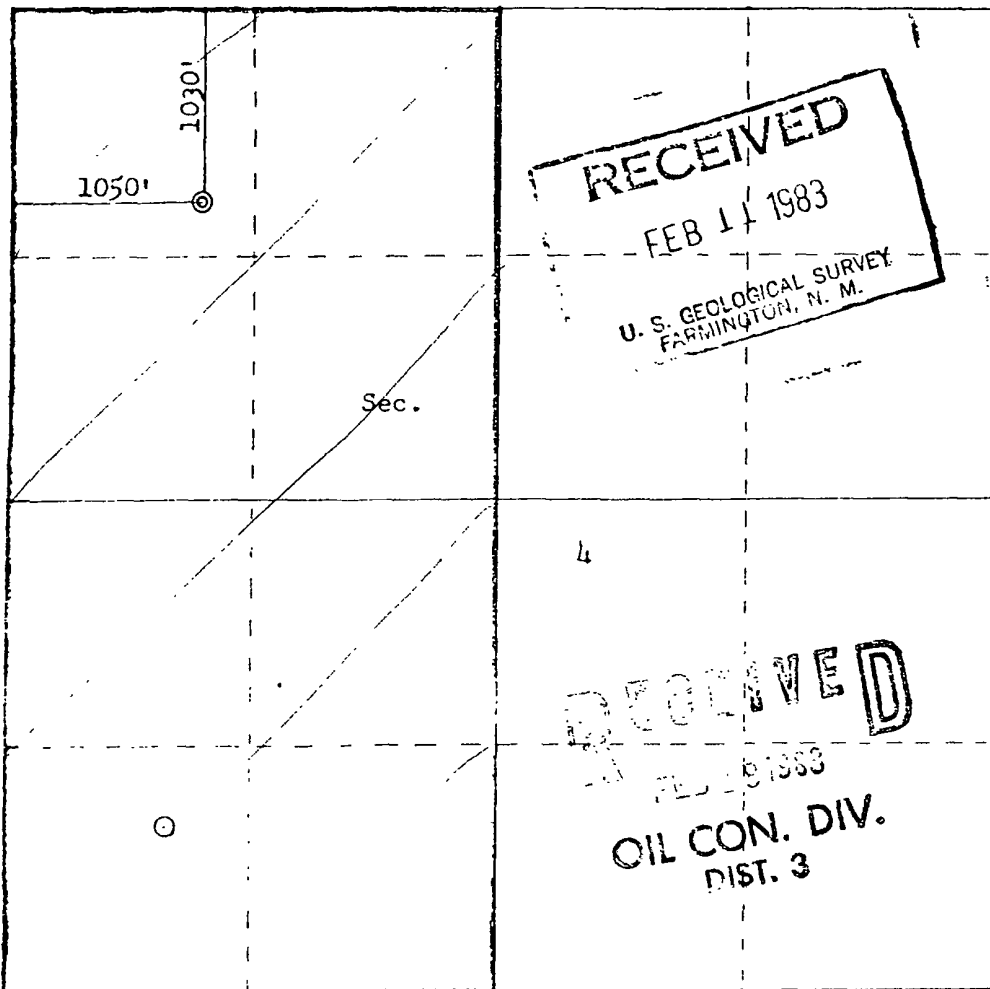
Operator AMOCO PRODUCTION COMPANY			Lease JICARILLA APACHE TRIBAL 151		Well No. 7E
Unit Letter D	Section 4	Township 26N	Range 5W	County Rio Arriba	
Actual Footage Location of Well: 1030 feet from the North line and 1050 feet from the West line					
Ground Level Elev. 6536	Producing Formation Dakota		Pool Basin Dakota	Dedicated Acreage: 320-4319.77 Acres	

1. Outline the acreage dedicated to the subject well by colored pencil or hachure marks on the plat below.
2. If more than one lease is dedicated to the well, outline each and identify the ownership thereof (both as to working interest and royalty).
3. If more than one lease of different ownership is dedicated to the well, have the interests of all owners been consolidated by communitization, unitization, force-pooling, etc?

Yes No If answer is "yes," type of consolidation _____

If answer is "no," list the owners and tract descriptions which have actually been consolidated. (Use reverse side of this form if necessary.) _____

No allowable will be assigned to the well until all interests have been consolidated (by communitization, unitization, forced-pooling, or otherwise) or until a non-standard unit, eliminating such interests, has been approved by the Commission.



CERTIFICATION

I hereby certify that the information contained herein is true and complete to the best of my knowledge and belief.

Dale H. Shoemaker

Name
D.H. SHOEMAKER

Position
DISTRICT ENGINEER

Company
AMOCO PRODUCTION COMPANY

Date
JANUARY 17, 1983

I hereby certify that the well location shown on this plat was plotted from field notes of actual surveys made by me or under my supervision, and that the same is true and correct to the best of my knowledge and belief.

Date Surveyed
November 1, 1982

Registered Professional Engineer and Land Surveyor
Fred B. Kerr Jr.
Fred B. Kerr Jr.

Certificate No. _____

UNITED STATES
DEPARTMENT OF THE INTERIOR
GEOLOGICAL SURVEY

SUNDRY NOTICES AND REPORTS ON WELLS

(Do not use this form for proposals to drill or to deepen or plug back to a different reservoir. Use Form 9-331-C for such proposals.)

1. oil well gas well other

2. NAME OF OPERATOR
Amoco Production Company

3. ADDRESS OF OPERATOR
501 Airport Drive, Farmington, NM 87401

4. LOCATION OF WELL (REPORT LOCATION CLEARLY. See space 17 below.)
AT SURFACE: 1030' FNL x 1050' FWL
AT TOP PROD. INTERVAL: Same
AT TOTAL DEPTH: Same

5. LEASE
Jicarilla Apache Tribal 151

6. IF INDIAN, ALLOTTEE OR TRIBE NAME
Jicarilla Apache

7. UNIT AGREEMENT NAME

8. FARM OR LEASE NAME
Jicarilla Apache Tribal 151

9. WELL NO.
7E

10. FIELD OR WILDCAT NAME
Basin Dakota

11. SEC., T., R., M., OR BLK. AND SURVEY OR AREA
NW/NW, Section 4, T26N, R5W

12. COUNTY OR PARISH
Rio Arriba

13. STATE
New Mexico

14. API NO.
30-039-23163

15. ELEVATIONS (SHOW DF, KDB, AND WD)
6536' GL

16. CHECK APPROPRIATE BOX TO INDICATE NATURE OF NOTICE, REPORT, OR OTHER DATA

REQUEST FOR APPROVAL TO:

- TEST WATER SHUT-OFF
- FRACTURE TREAT
- SHOOT OR ACIDIZE
- REPAIR WELL
- PULL OR ALTER CASING
- MULTIPLE COMPLETE
- CHANGE ZONES
- ABANDON*

SUBSEQUENT REPORT OF:

- TEST WATER SHUT-OFF
- FRACTURE TREAT
- SHOOT OR ACIDIZE
- REPAIR WELL
- PULL OR ALTER CASING
- MULTIPLE COMPLETE
- CHANGE ZONES
- ABANDON*
- U. S. GEOLOGICAL SURVEY, FARMINGTON, N. M.

(other) spud and set casing

RECEIVED

JUL 1 1983

(NOTE: Report results of multiple completion or zone change on Form 9-330.)

17. DESCRIBE PROPOSED OR COMPLETED OPERATIONS (Clearly state all pertinent details, and give pertinent dates, including estimated date of starting any proposed work. If well is directionally drilled, give subsurface locations and measured and true vertical depths for all markers and zones pertinent to this work.)*

Moved in rotary tool and spudded a 12-1/4" hole on 5-20-83. Drilled to 295' and landed 9-5/8", 40#, HC-95 casing at 294'. Cemented with 420 cu. ft. Class B cement containing 2% CaCl2. Pressure tested casing to 1400 PSI. Drilled an 8-3/4" hole to 3355' and landed 7", 23#, K-55 casing at 3355'. Cemented with 1084 cu. ft. Class B 65:35 POZ cement, and tailed in with 118 cu. ft. Class B neat. Pressured tested 7" casing to 1500 PSI. Drilled a 6-1/4" hole and reached a TD of 7723' on 5-30-83. Landed 4-1/2", 10.5#, K-55 casing at 7689. Cemented first stage with 285 cu. ft. Class B 50:50 POZ cement. Cemented second stage with 296 cu. ft. Class B 65:35 POZ cement. Tailed in both stages with 118 cu. ft. Class B neat. Circulated to surface. DV tool was set at 5639'. Released rig on 5-31-83.

Subsurface Safety Valve: Manu. and Type _____ Ft.

18. I hereby certify that the foregoing is true and correct

SIGNED _____ TITLE Dist. Admin. Supvr DATE JUL 6 1983

(This space for Federal or State office use)

APPROVED BY _____ TITLE _____ DATE _____
CONDITIONS OF APPROVAL, IF ANY

RECEIVED

ROUTED FOR RECORD

JUL 07 1983

*See Instructions on Reverse Side

NMOCC

ENERVEST OPERATING LLC

**Below Grade Tank
Observed Sitting Requirements**

Lease Name & Well Number Ticavilla AP Tribal 151-7E

API No. 3003923163

Observed by Duane H

Date Observed 10-8-09

MEASURED FROM THE BELOW-GRADE TANK: Yes No If not within limits, explain:

Continuously flowing water course > 300 ft. _____

Significant Watercourse, lakebed, sinkhole or
playa lake > 200 feet _____

Permanent Residence > 200 feet _____

School > 200 feet _____

Hospital > 200' _____

Institution or Church > 200' _____

Private, domestic fresh water well or
spring > 500 feet _____

Any other fresh water well or spring > 1000 feet Old Water Well South of Location

Within incorporated municipal boundary of
defined municipal fresh water field _____

Wetland area > 500 feet _____

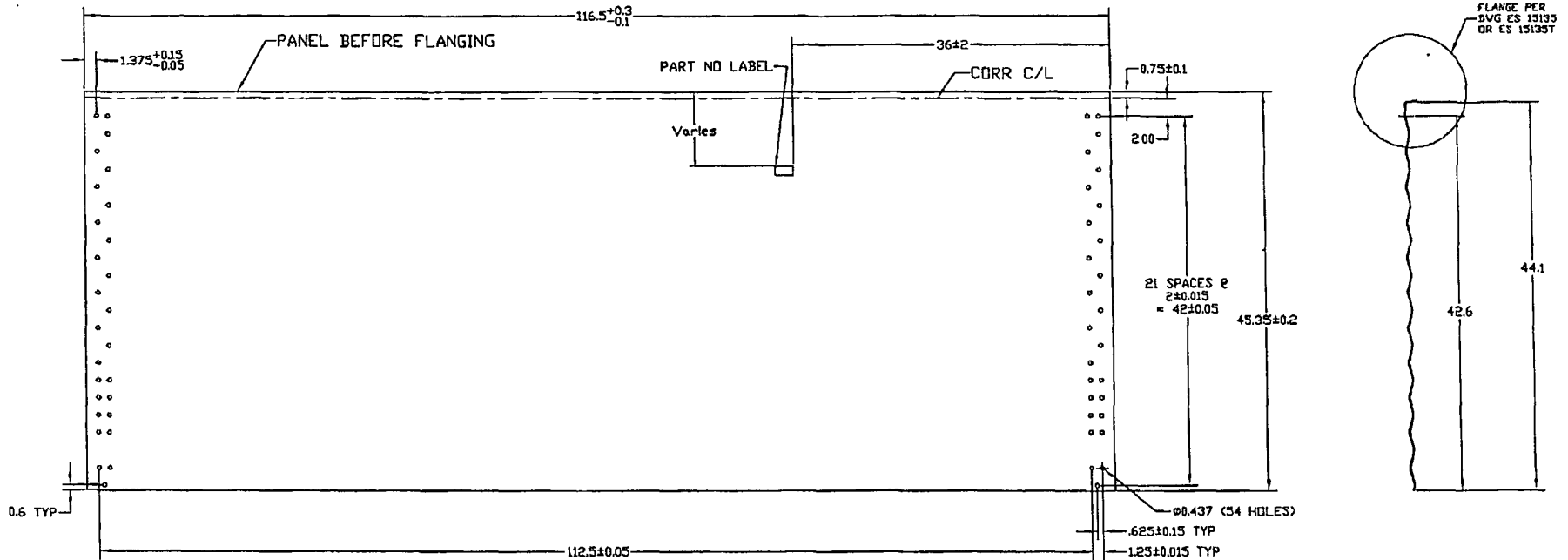
Overlying a subsurface mine _____

36°31.24N 36.523333
107°22.16W 107.371111

Distance to watercourse or dry wash should be to nearest edge

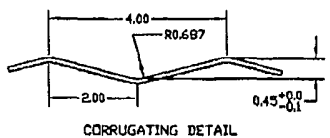
Please include distance & direction to all waterwells and/or wetland areas

**Each Below-Grade Tank needing to be permitted, needs a visual inspection
of the above Criteria as per Rule 19.15.17.10**



44' WALL PANEL BEFORE FLANGING

MATERIAL SPECIFICATIONS			
THICKNESS	BLANK WIDTH	WALL SHEET PART NO	WEIGHT (lb)
NOMINAL	MINIMUM		
0.066	0.061	46.5 CW4415F	98.5
0.096	0.088	46.3 CW4413F	143.4

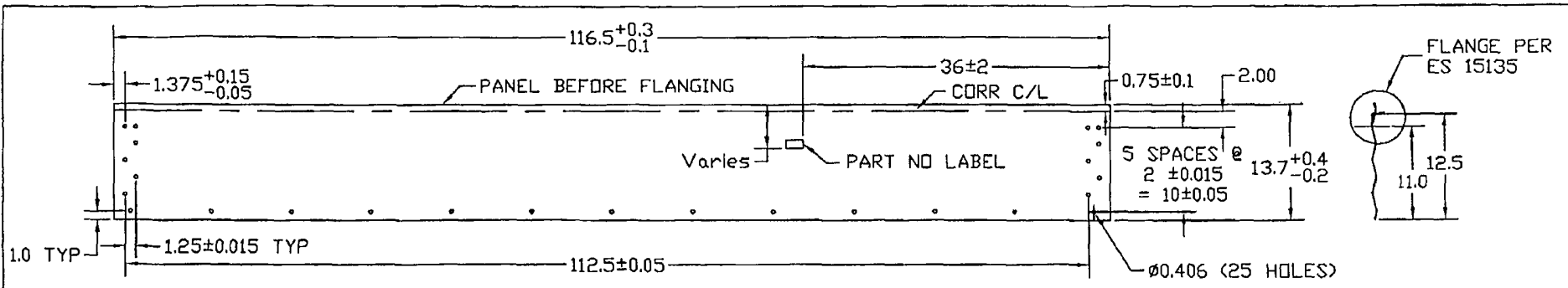


- MANUFACTURING NOTES:
- CORRUGATION: SEE DETAIL
 - HOLE OFF CENTER OF CORR: ± .05
 - HOLE BURR MAX: .01
 - CUT OFF BURR MAX: .01
 - CORNER HOLE TO HOLE DIAGONAL: ± .15

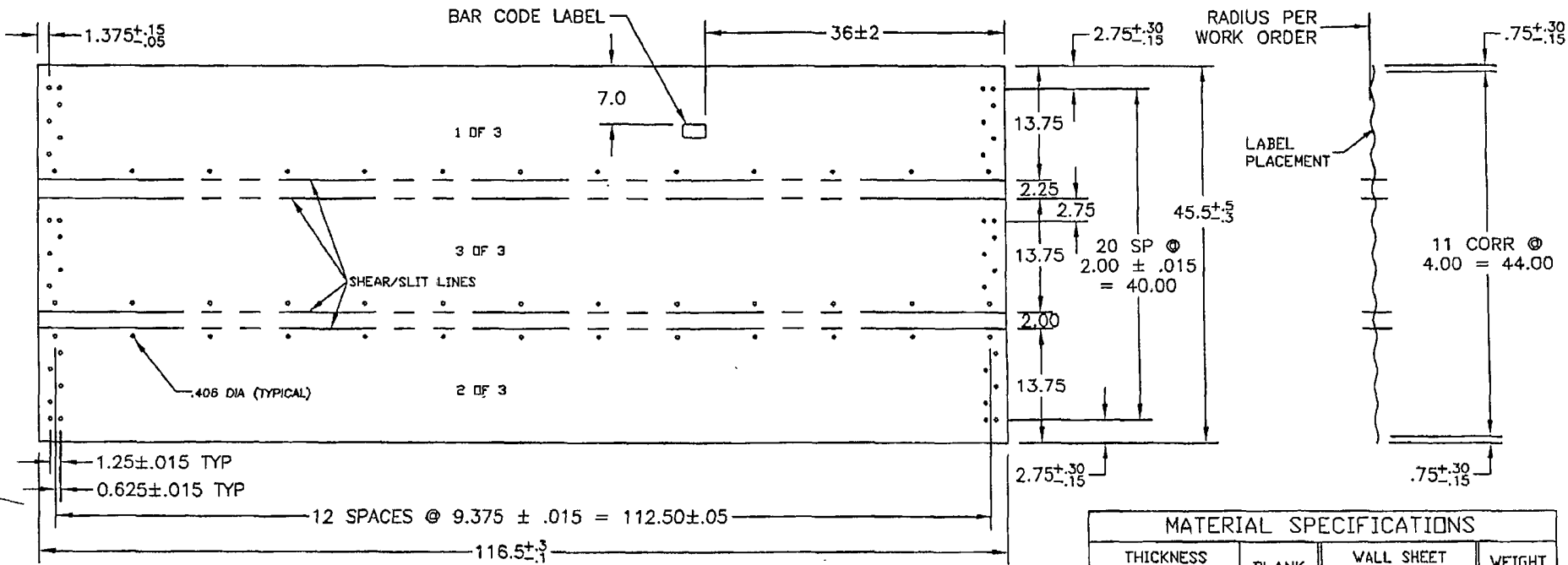
NO	DATE	REVISION	E.C.R.	BY	CH.
1	01.28.04	LOWERED CLAMP LOCATION 4'	A6786	RF	BA

DIMENSIONS SHOWN ARE IMPERIAL UNITS SHOWN IN BRACKETS	
TOLERANCES (UNLESS OTHERWISE NOTED)	
IMPERIAL (in)	METRIC (mm)
.X ± .1	X ± 2
.XX ± .03	X ± 1.0
.XXX ± .010	XX ± .50
ANGULAR ± 1°	

MATERIAL	SEE CHART - ASTM A653 SS GR 50 G115 OIL	BLANK SIZE	46.5 x 116.5	SURFACE AREA	WEIGHT (LBS)
DESND.	RM	THIS DRAWING IS THE EXCLUSIVE PROPERTY OF WESTEEL AND ALL RIGHTS ARE RESERVED		SCALE	DWN. (Y.M.D.)
DWN.	RF	NO PART OF THIS DRAWING MAY BE USED OR REPRODUCED IN ANY MANNER WHATSOEVER WITHOUT WRITTEN PERMISSION FROM WESTEEL, a Division of JENISYS ENGINEERED PRODUCTS		nts	02.02.19
CHKD.	BA	DRAWING TITLE	CONTAINMENT RING 44' WALL PANEL	E.C.R.	LOCATION
APPD.	BA	CUSTOMER		A6647	WINNIPEG
		PRINTING DATE		02-255	TYPE
					ACAD14
				SIZE	REV. NO.
				B ES 15510	1



13 1/2" WALL PANEL LAYOUT BEFORE FLANGING



MANUFACTURING VIEW ONLY - TRIPLE PANEL AFTER CORR & PUNCH, BEFORE SLITTING & FLANGING

MATERIAL SPECIFICATIONS				
THICKNESS		BLANK WIDTH	WALL SHEET PART NO	WEIGHT (LBS)
NOMINAL	MINIMUM			
0.066	0.061	14.75	CW1357F	31.5

				MATERIAL SEE CHART - ASTM A653 SS GR50 G115 OIL		BLANK SIZE 46.5x116.5 (3 pcs)		WEIGHT (LBS.) 31.5	
				DESND. BA		SCALE N.T.S.		DWN. (Y.M.D.) 2004.11.30	
				DWN. RF		E.C.R. A6834		LOCATION WPG	
				CHKD. BA		E.P. NO. 02-255		DVG TYPE A-2000	
				APPD. BA		DRAWING TITLE 13.5" FULL PANEL - 57" ONLY CONTAINMENT RING		SIZE DRAWING NO. A ES 15516	
				CUSTOMER -		PRINTING DATE (Y.M.D.) -		REV. NO. O	
NO	DATE	REVISION	E.C.R.	BY	CH				

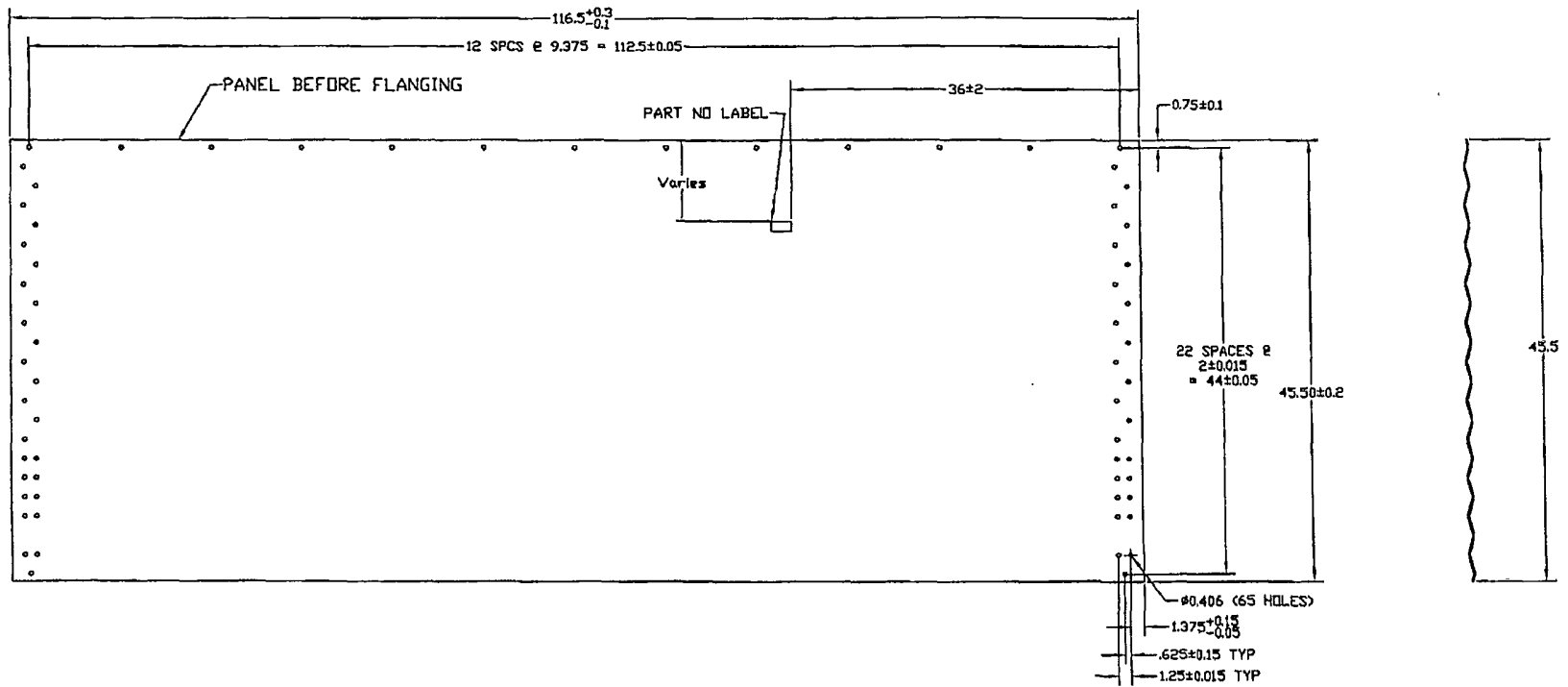
DIMENSIONS SHOWN ARE IMP
MM UNITS SHOWN IN BRACKETS

TOLERANCES (UNLESS OTHERWISE NOTED)

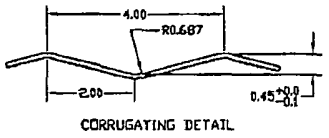
DIMENSIONS:

IMPERIAL (in.)	METRIC (mm)
.x ? .1	x ? .2
.xx ? .03	.xx ? 1.0
.xxx ? .010	.xx ? .50

ANGULAR: ± 1°



44' WALL PANEL AFTER CORRUGATING AND PUNCHING

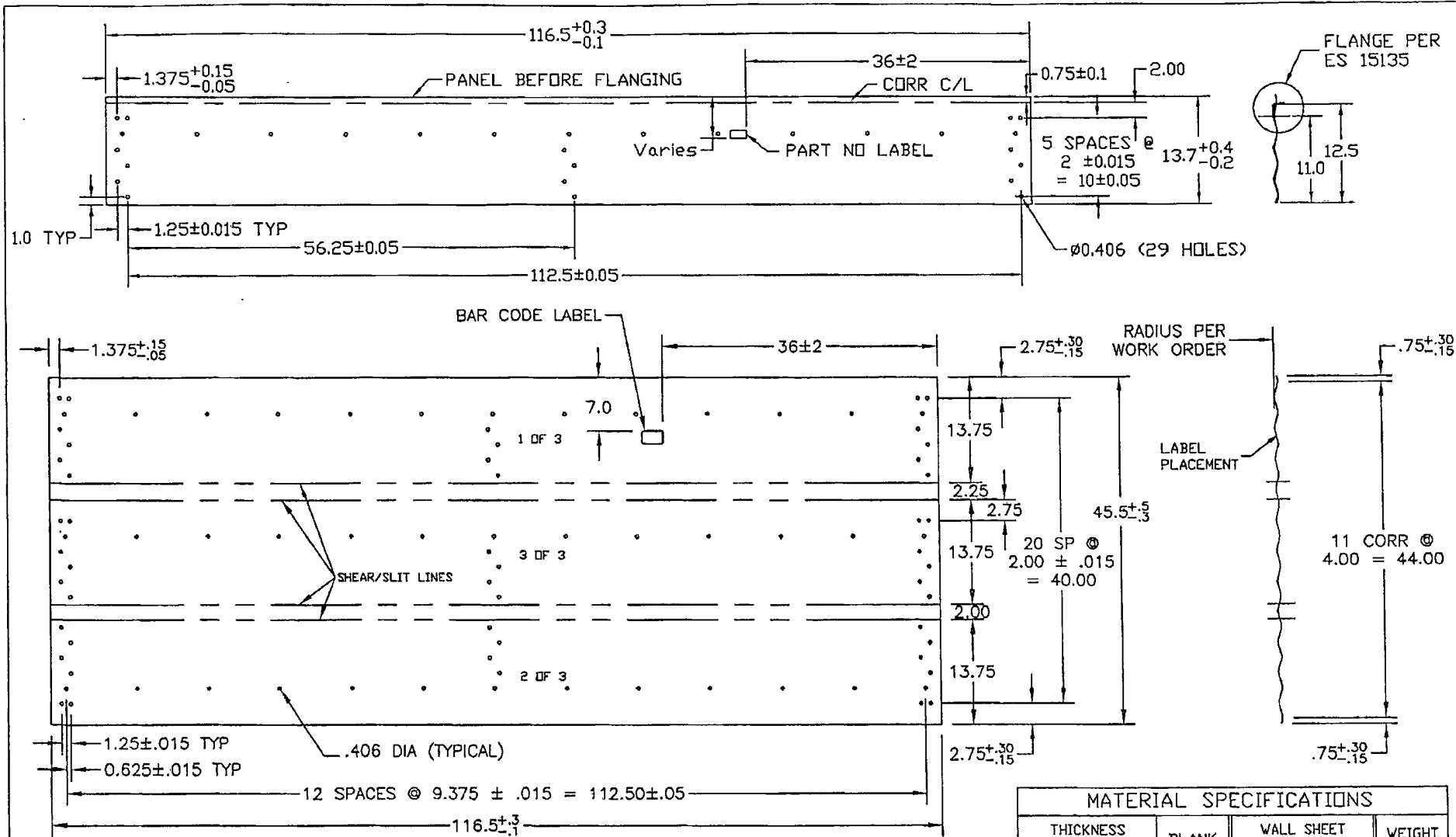


- MANUFACTURING NOTES:
1. CORRUGATION..... SEE DETAIL
 2. HOLE OFF CENTER OF CORR..... ± .05
 3. HOLE BURR MAX..... .01
 4. CUT OFF BURR MAX..... .01
 5. CORNER HOLE TO HOLE DIAGONAL ± .15

MATERIAL SPECIFICATIONS				
THICKNESS	BLANK WIDTH		WALL SHEET PART NO	WEIGHT (LBS)
	NOMINAL	MINIMUM		
0.066	0.061	46.5	CW445715F	97.7
0.139	0.130	46.2	CW445710F	208.5

NO	DATE	REVISION	E.C.R.	BY	CH.

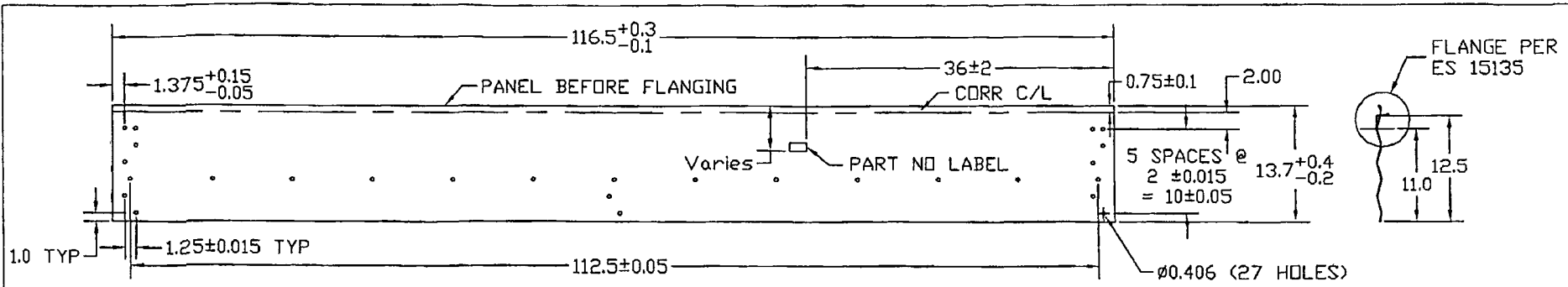
DIMENSIONS SHOWN ARE IMPERIAL UNITS SHOWN IN BRACKETS		DESIGN: BA	MATERIAL: SEE CHART - ASTM A653 SS GR 50 G115 OIL	BLANK SIZE: 46.5 x 116.5	SURFACE AREA: see chart	WEIGHT (LBS): see chart	
TOLERANCES (UNLESS OTHERWISE NOTED)		DRAWN: RF	THIS DRAWING IS THE EXCLUSIVE PROPERTY OF WESTEEL AND ALL RIGHTS ARE RESERVED. NO PART OF THIS DRAWING MAY BE USED OR REPRODUCED IN ANY MANNER WHATSOEVER WITHOUT WRITTEN PERMISSION FROM WESTEEL, a Division of JENISYS ENGINEERED PRODUCTS		SCALE: nts	DWN. (Y.M.D.): 04.12.01	LOCATION: WINNIPEG
DIMENSIONS: IMPERIAL (in.) METRIC (mm) .x ± .1 x ± .2 .xx ± .03 xx ± 1.0 .xxx ± .010 xxx ± .50		CHKD: BA	DRAWING TITLE: 44' FULL PANEL - 57' ONLY CONTAINMENT RING		E.C.R.: A6834	E.P. NO.	TYPE: A-2000
ANGULAR: ± 1°		APPD: BA	CUSTOMER:	PRINTING DATE:	SIZE: B	DRAWING NO: ES 15518	REV. NO: 0



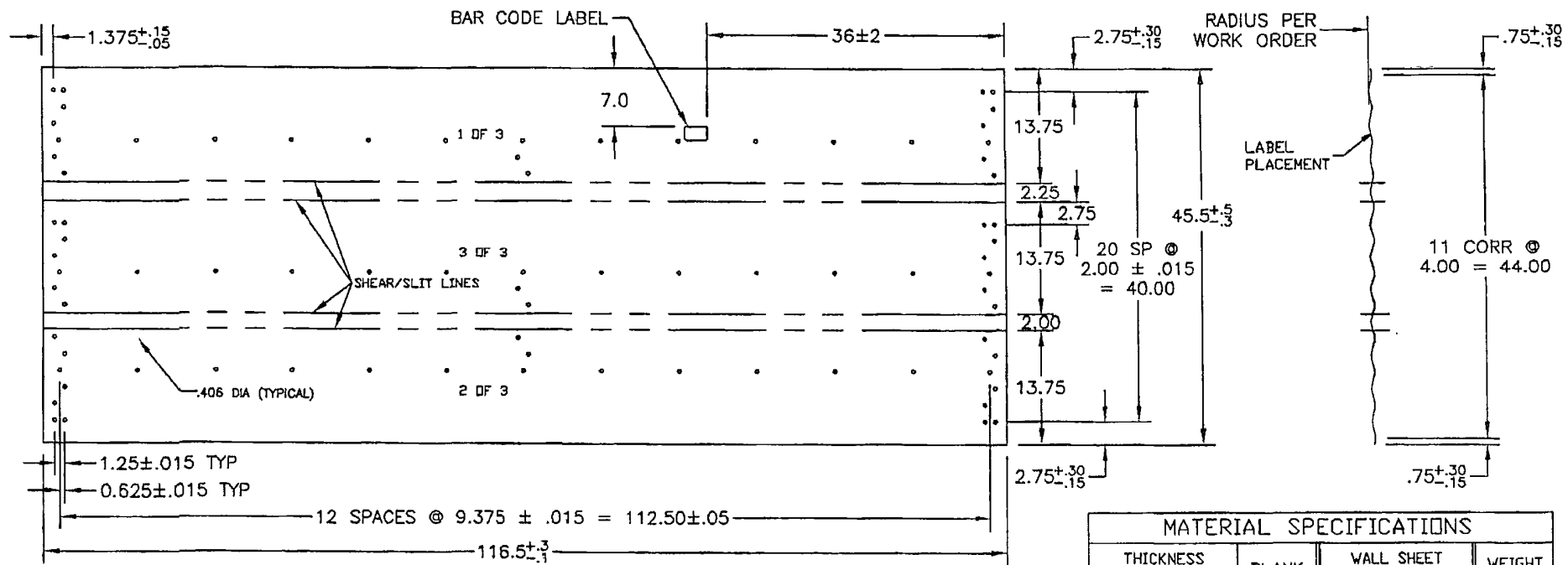
MATERIAL SPECIFICATIONS				
THICKNESS		BLANK WIDTH	WALL SHEET PART NO	WEIGHT (LBS.)
NOMINAL	MINIMUM			
0.066	0.061	14.75	019401	31.5

MANUFACTURING VIEW ONLY - TRIPLE PANEL AFTER CORR & PUNCH, BEFORE SLITTING & FLANGING

DIMENSIONS SHOWN ARE IMP. MM UNITS SHOWN IN BRACKETS				DESIGN	MATERIAL	BLANK SIZE	WEIGHT (LBS.)		
				BA	SEE CHART - ASTM A653 SS GR50 G115 OIL	46.5x116.5 (3 pcs)	31.5		
TOLERANCES (UNLESS OTHERWISE NOTED)				DRAWN	WESTEEL	THIS DRAWING IS THE EXCLUSIVE PROPERTY OF WESTEEL AND ALL RIGHTS ARE RESERVED. NO PART OF THIS DRAWING MAY BE USED OR REPRODUCED IN ANY MANNER WHATSOEVER WITHOUT WRITTEN PERMISSION FROM Westeel Limited	SCALE	DWN. (Y.M.D.)	LOCATION
DIMENSIONS:				RF			N.T.S.	2004.11.30	WPG
IMPERIAL (in.) METRIC (mm)				CHKD.	DRAWING TITLE	13.5' FULL PANEL - 4' RISER CONTAINMENT RING	E.C.R.	E.P. NO.	DWG TYPE
.x ? .1 x ? 2				BA			A6834	02-255	A-2000
.xxx ? .03 .x ? 1.0				APPD.	CUSTOMER	PRINTING DATE (Y.M.D.)	SIZE	DRAWING NO.	REV. NO.
.xxx ? .010 .xx ? .50				BA	-	-	A	019401	O
ANGULAR: ± 1°									
NO	DATE	REVISION	E.C.R. BY	CH.					



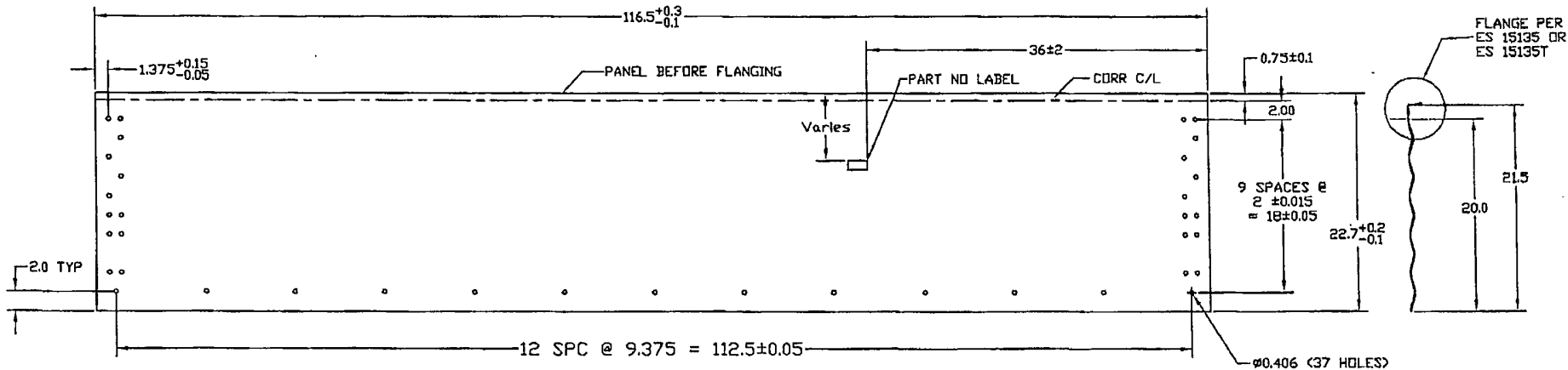
13 1/2' WALL PANEL LAYOUT BEFORE FLANGING



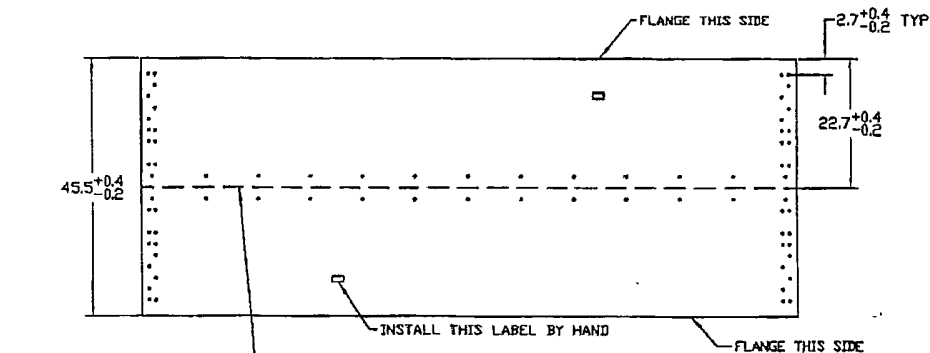
MANUFACTURING VIEW ONLY - TRIPLE PANEL AFTER CORR & PUNCH, BEFORE SLITTING & FLANGING

MATERIAL SPECIFICATIONS				
THICKNESS		BLANK WIDTH	WALL SHEET PART NO	WEIGHT (LBS)
NOMINAL	MINIMUM			
0.066	0.061	14.75	019419	31.5

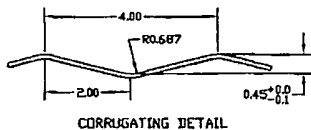
NO		DATE		REVISION		E.C.R.		BY		CH																																																																																																																																	
<table border="1"> <tr> <td colspan="2">DIMENSIONS SHOWN ARE IMP</td> <td colspan="2">DES.ND.</td> <td colspan="2">MATERIAL</td> <td colspan="2">BLANK SIZE</td> <td colspan="2">WEIGHT (LBS)</td> </tr> <tr> <td colspan="2">MM UNITS SHOWN IN BRACKETS</td> <td colspan="2">BA</td> <td colspan="2">SEE CHART - ASTM A653 SS GR50 G115 OIL</td> <td colspan="2">46.5x116.5 (3 pcs)</td> <td colspan="2">31.5</td> </tr> <tr> <td colspan="2">TOLERANCES (UNLESS OTHERWISE NOTED)</td> <td colspan="2">DWN.</td> <td colspan="2">THIS DRAWING IS THE EXCLUSIVE PROPERTY OF WESTEEL AND ALL RIGHTS ARE RESERVED. NO PART OF THIS DRAWING MAY BE USED OR REPRODUCED IN ANY MANNER WHATSOEVER WITHOUT WRITTEN PERMISSION FROM Westeel Limited</td> <td colspan="2">SCALE</td> <td colspan="2">DWN. (Y.M.D.)</td> <td colspan="2">LOCATION</td> </tr> <tr> <td colspan="2">DIMENSIONS:</td> <td colspan="2">RF</td> <td colspan="2">DRAWING TITLE</td> <td colspan="2">N.T.S.</td> <td colspan="2">2006.08.08</td> <td colspan="2">WPG</td> </tr> <tr> <td colspan="2">IMPERIAL (in.)</td> <td colspan="2">BA</td> <td colspan="2">9.5' FULL PANEL - 52.5' ONLY</td> <td colspan="2">E.C.R.</td> <td colspan="2">E.P. NO.</td> <td colspan="2">DVG TYPE</td> </tr> <tr> <td colspan="2">.x ? .1</td> <td colspan="2">BA</td> <td colspan="2">CONTAINMENT RING</td> <td colspan="2">A6834</td> <td colspan="2">02-255</td> <td colspan="2">A-2000</td> </tr> <tr> <td colspan="2">.xx ? .03</td> <td colspan="2">BA</td> <td colspan="2">APPD.</td> <td colspan="2">CUSTOMER</td> <td colspan="2">PRINTING DATE (Y.M.D.)</td> <td colspan="2">SIZE</td> </tr> <tr> <td colspan="2">.xxx ? .010</td> <td colspan="2">BA</td> <td colspan="2">-</td> <td colspan="2">-</td> <td colspan="2">-</td> <td colspan="2">DRAWING NO.</td> </tr> <tr> <td colspan="2">ANGULAR ± 1°</td> <td colspan="2">BA</td> <td colspan="2">-</td> <td colspan="2">-</td> <td colspan="2">-</td> <td colspan="2">REV. NO</td> </tr> <tr> <td colspan="2"></td> <td colspan="2">BA</td> <td colspan="2">-</td> <td colspan="2">-</td> <td colspan="2">-</td> <td colspan="2">019419</td> </tr> <tr> <td colspan="2"></td> <td colspan="2">BA</td> <td colspan="2">-</td> <td colspan="2">-</td> <td colspan="2">-</td> <td colspan="2">O</td> </tr> </table>												DIMENSIONS SHOWN ARE IMP		DES.ND.		MATERIAL		BLANK SIZE		WEIGHT (LBS)		MM UNITS SHOWN IN BRACKETS		BA		SEE CHART - ASTM A653 SS GR50 G115 OIL		46.5x116.5 (3 pcs)		31.5		TOLERANCES (UNLESS OTHERWISE NOTED)		DWN.		THIS DRAWING IS THE EXCLUSIVE PROPERTY OF WESTEEL AND ALL RIGHTS ARE RESERVED. NO PART OF THIS DRAWING MAY BE USED OR REPRODUCED IN ANY MANNER WHATSOEVER WITHOUT WRITTEN PERMISSION FROM Westeel Limited		SCALE		DWN. (Y.M.D.)		LOCATION		DIMENSIONS:		RF		DRAWING TITLE		N.T.S.		2006.08.08		WPG		IMPERIAL (in.)		BA		9.5' FULL PANEL - 52.5' ONLY		E.C.R.		E.P. NO.		DVG TYPE		.x ? .1		BA		CONTAINMENT RING		A6834		02-255		A-2000		.xx ? .03		BA		APPD.		CUSTOMER		PRINTING DATE (Y.M.D.)		SIZE		.xxx ? .010		BA		-		-		-		DRAWING NO.		ANGULAR ± 1°		BA		-		-		-		REV. NO				BA		-		-		-		019419				BA		-		-		-		O	
DIMENSIONS SHOWN ARE IMP		DES.ND.		MATERIAL		BLANK SIZE		WEIGHT (LBS)																																																																																																																																			
MM UNITS SHOWN IN BRACKETS		BA		SEE CHART - ASTM A653 SS GR50 G115 OIL		46.5x116.5 (3 pcs)		31.5																																																																																																																																			
TOLERANCES (UNLESS OTHERWISE NOTED)		DWN.		THIS DRAWING IS THE EXCLUSIVE PROPERTY OF WESTEEL AND ALL RIGHTS ARE RESERVED. NO PART OF THIS DRAWING MAY BE USED OR REPRODUCED IN ANY MANNER WHATSOEVER WITHOUT WRITTEN PERMISSION FROM Westeel Limited		SCALE		DWN. (Y.M.D.)		LOCATION																																																																																																																																	
DIMENSIONS:		RF		DRAWING TITLE		N.T.S.		2006.08.08		WPG																																																																																																																																	
IMPERIAL (in.)		BA		9.5' FULL PANEL - 52.5' ONLY		E.C.R.		E.P. NO.		DVG TYPE																																																																																																																																	
.x ? .1		BA		CONTAINMENT RING		A6834		02-255		A-2000																																																																																																																																	
.xx ? .03		BA		APPD.		CUSTOMER		PRINTING DATE (Y.M.D.)		SIZE																																																																																																																																	
.xxx ? .010		BA		-		-		-		DRAWING NO.																																																																																																																																	
ANGULAR ± 1°		BA		-		-		-		REV. NO																																																																																																																																	
		BA		-		-		-		019419																																																																																																																																	
		BA		-		-		-		O																																																																																																																																	



21 1/2' WALL PANEL LAYOUT BEFORE FLANGING



MANUFACTURING VIEW ONLY - DOUBLE PANEL AFTER CORR & PUNCH, BEFORE SLITTING & FLANGING



CORRUGATING DETAIL

MANUFACTURING NOTES:

1. CORRUGATION..... SEE DETAIL
2. HOLE OFF CENTER OF CORR..... ± .05
3. HOLE BURR MAX..... .01
4. CUT OFF BURR MAX..... .01
5. CORNER HOLE TO HOLE DIAGONAL ± .15

MATERIAL SPECIFICATIONS				
THICKNESS		BLANK WIDTH	WALL SHEET PART NO	WEIGHT (Lb)
NOMINAL	MINIMUM			
0.066	0.061	23.3	C10514	49.4

MATERIAL SEE CHART - ASTM A653 S0 GR50 GI15 OIL	BLANK SIZE 46.6x116.5 (2 pcs)	SURFACE AREA	WEIGHT (LBS)
DESIGN RM	SCALE 1:1	DRAWN (CY.M.D.) 98.08.13	LOCATION WINNIPEG
DRAWN RM	NO PART OF THIS DRAWING MAY BE USED OR REPRODUCED IN ANY MANNER WHATSOEVER WITHOUT WRITTEN PERMISSION FROM WESTEEL, a Division of JENISYS ENGINEERED PRODUCTS	E.C.R. A 6428	E.P. NO. 98-197
CHECK YS	DRAWING TITLE CONTAINMENT RING 22' WALL PANEL	TYPE ACAD14	REV. NO.
APP'D RM	CUSTOMER	PRINTING DATE	SIZE B
			DRAWING NO. C10514
			1

NO	DATE	REVISION	E.C.R.	BY	CH
1	06/12/06	CORRECTED HOLE PATTERN ON BOTTOM BLANK	A689B	RF	RF

DIMENSIONS SHOWN ARE IMPERIAL UNITS SHOWN IN BRACKETS UNLESS OTHERWISE NOTED

TOLERANCES UNLESS OTHERWISE NOTED

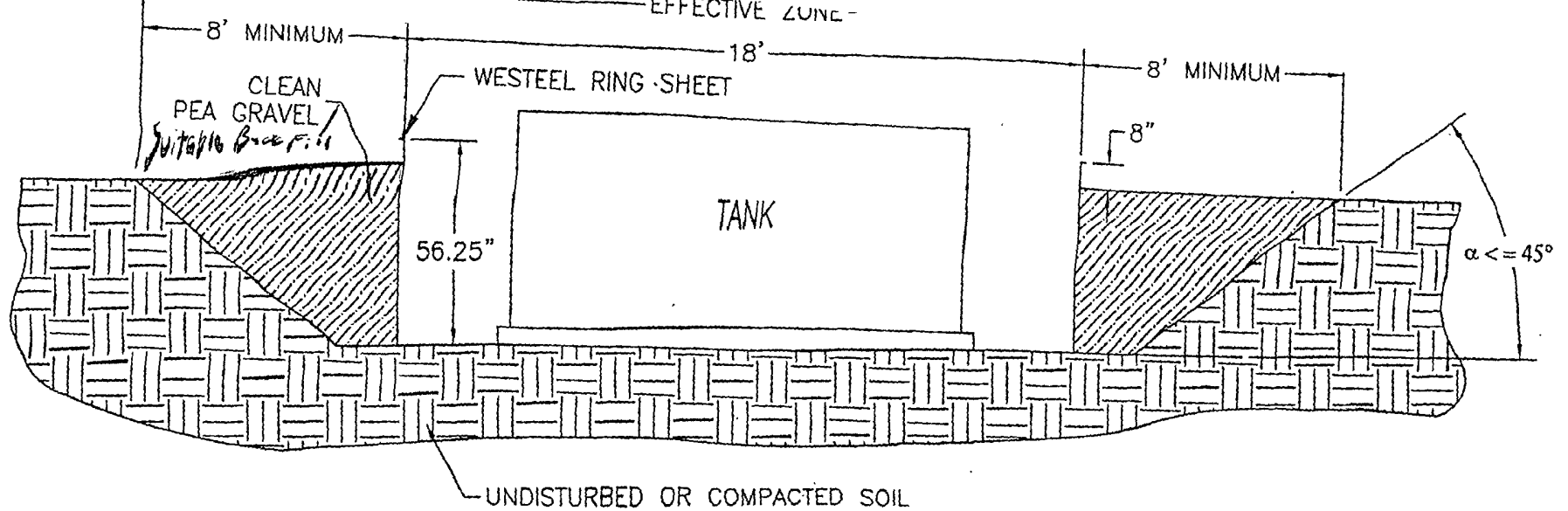
DIMENSIONS:

IMPERIAL (IN) METRIC (MM)

± .03 ± .03 ± .03 ± .03

± .01 ± .01 ± .01 ± .01

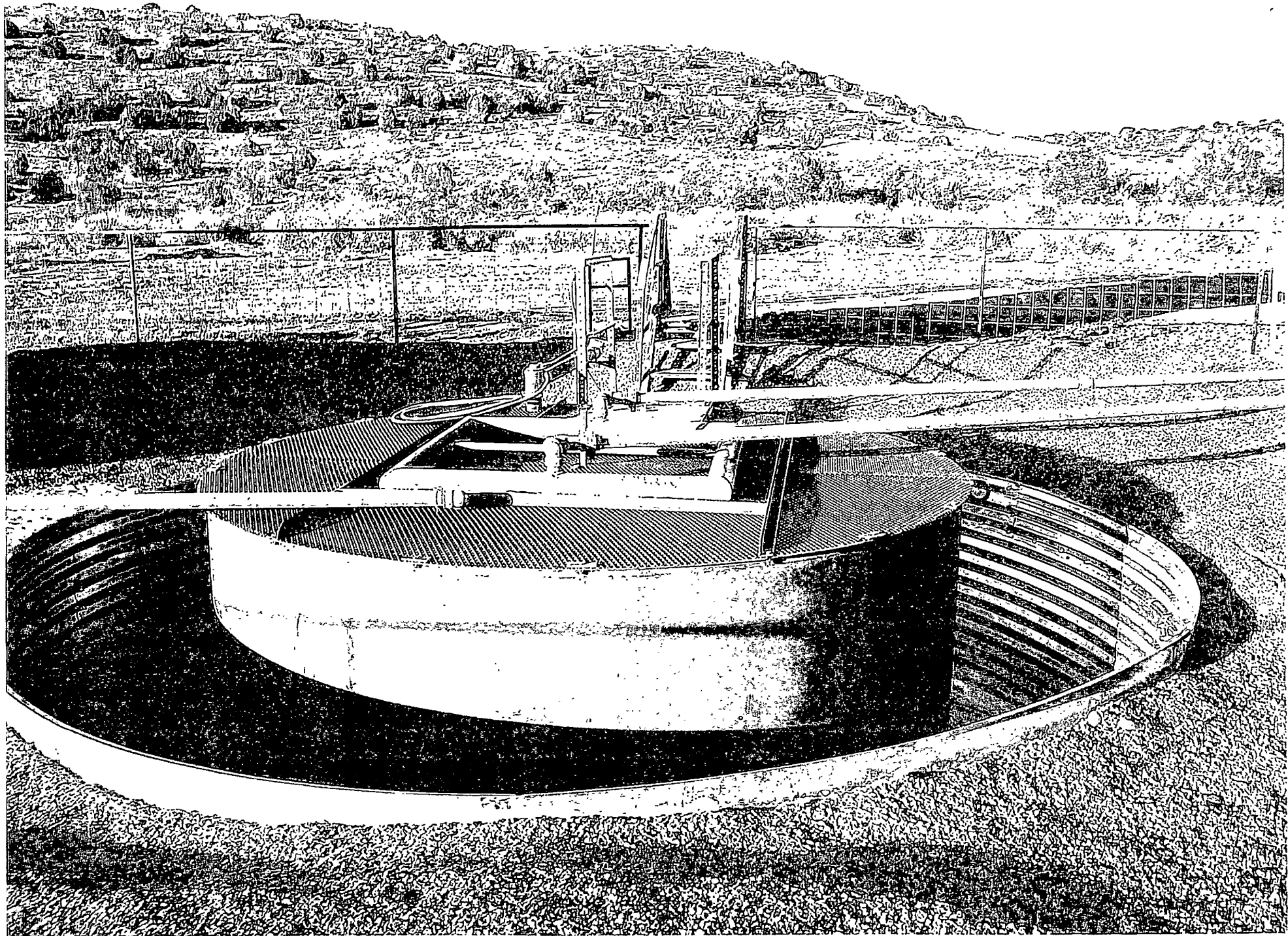
ANGULAR ± 1°

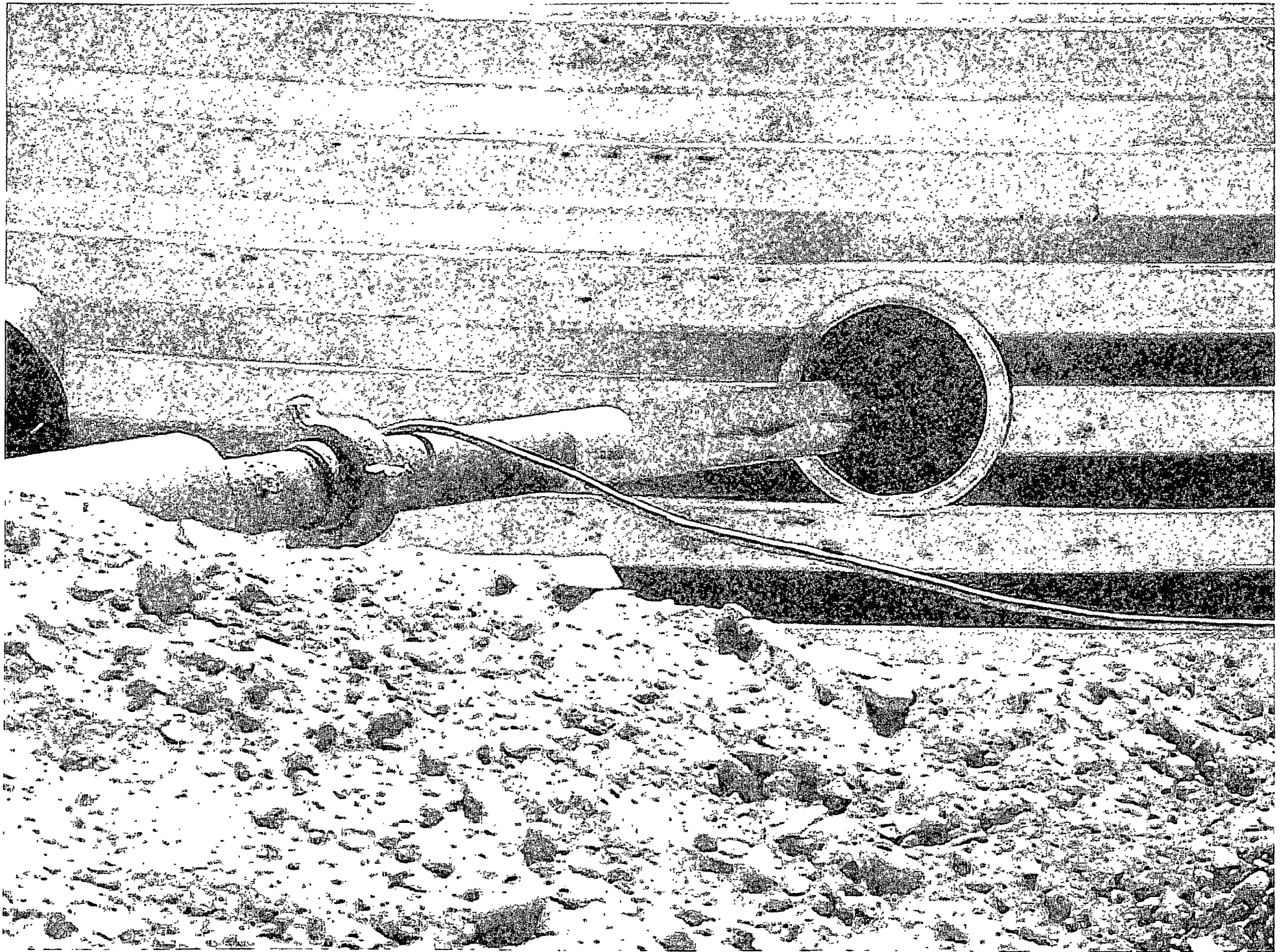


INSTALLATION INSTRUCTIONS & SITE REQUIREMENTS

1. EXCAVATE AS PER ABOVE
2. FOR BEST RESULTS, BACKFILL WITH CLEAN PEA GRAVEL (OR EQUIVALENT FREE FLOWING MATERIAL) EVENLY AROUND THE STRUCTURE, TAKING CARE NOT TO FILL IN ANY ONE AREA VERY HIGH RELATIVE TO OTHER AREAS, SO AS TO MAINTAIN THE STRUCTURE AS ROUND. WORKING AROUND THE STRUCTURE IN APPROXIMATELY 6" LIFTS IS RECOMMENDED. (NOTE: ALTERNATIVE MATERIALS CAN BE USED BUT CARE MUST BE TAKEN TO INSURE THAT THE EXTERNAL PRESSURES ACTING ON THE STRUCTURE REMAIN UNIFORM. IF NATIVE SOIL IS USED AS A BACKFILL MATERIAL, IT SHOULD BE UNIFORM IN CONSISTENCY, AND BE FREE OF LARGE ROCKS OR UNBROKEN CLUMPS, WHICH COULD RESULT IN UNEVEN LOADING).
3. THE COMPLETED STRUCTURE SHOULD EXTEND APPROXIMATELY 8" ABOVE GRADE
4. TO INSURE STRUCTURAL INTEGRITY, UNEVEN EXTERNAL WALL PRESSURE IS TO BE AVOIDED. NO VEHICLES OR OTHER SOURCES OF POINT LOADING SHOULD BE PERMITTED WITHIN THE EFFECTIVE ZONE (AS ILLUSTRATED).
5. WESTEEL IS NOT LIABLE FOR ANY DAMAGES OR INJURIES RESULTING FROM ANY FAILURE DUE TO IMPROPER INSTALLATION, IMPROPER SITE CONDITIONS, OR INADEQUATE MAINTENANCE OF THE SITE.

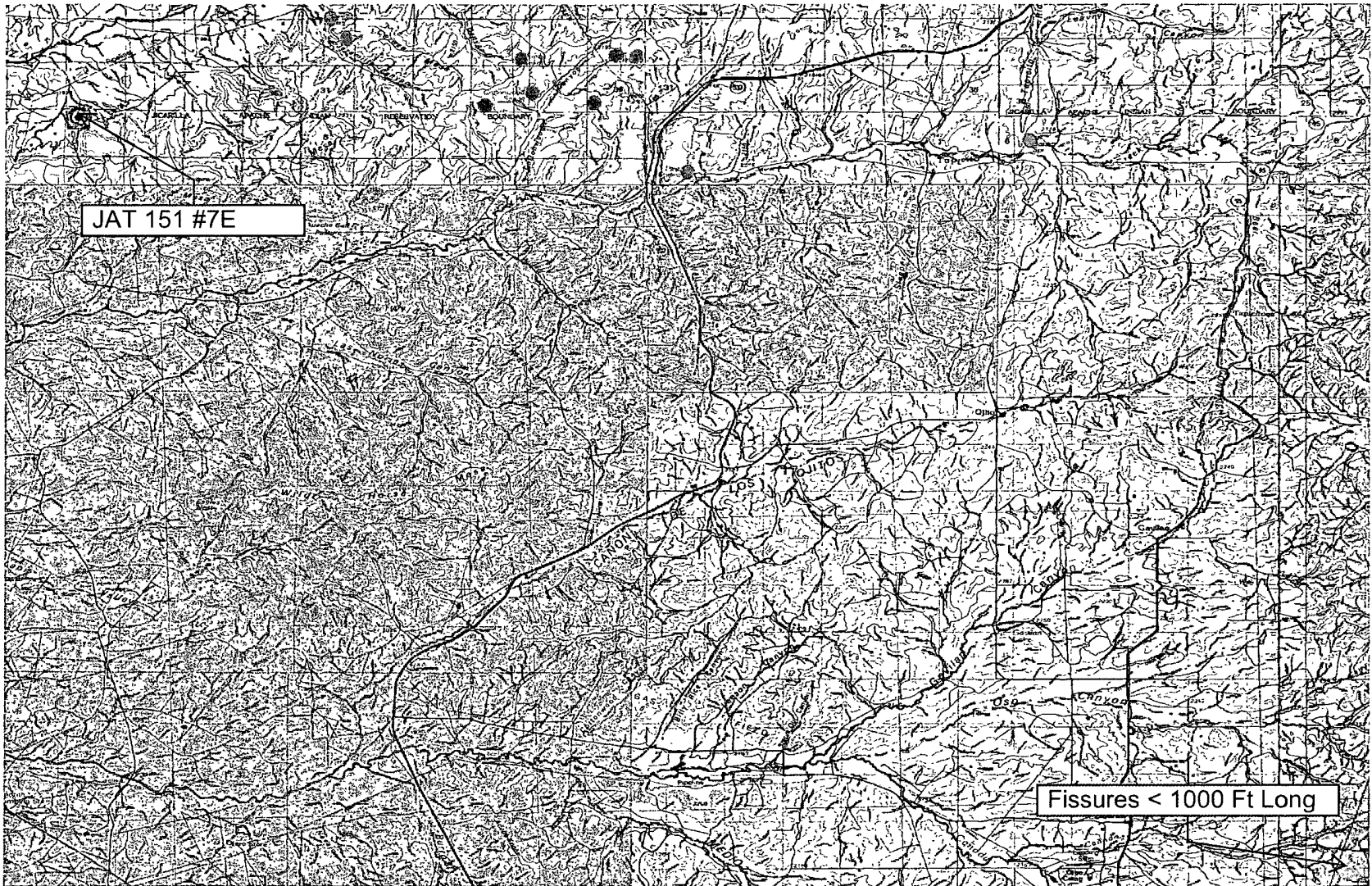
NOTE: THIS SYSTEM IS NOT DESIGNED FOR THE SECONDARY CONTAINMENT OF LIQUIDS, RATHER, TO ALLOW FOR INSPECTION OF THE TANK.



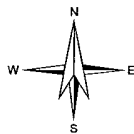


Appendix 09

Karst Map



0 2 4mi



Petroleum Recovery
Research Center

Karst - Jicarilla Apache Tribal 151 #7E

Figure: 09

D - Sec 04, 26N, 05W

Dec 31, 2009

API 30-039-23163

REFERENCES

Wetland Map:

U. S. Fish and Wildlife Service
National Wetlands Inventory
Wetlands Mapper
www.fws.gov/wetlands/data/mapper

Floodplains map:

Federal Emergency Management Agency
National Flood Insurance Program
FIRM (Flood Insurance Rate Map)
Map Service Center
<http://msc.fema.gov/webapp/wcs/stores/servlet/FemaWelcomeView?storeId=10001&catalogId=10001&langId=-1>

Depth to Ground Water: Individual water well documentation.

State of New Mexico
Office of the State Engineer
New Mexico Water Rights Reporting System
http://www.ose.state.nm.us/waters_db_index.html

Subsurface Mines:

EMNRD
Mining & Minerals Division
Mines, Mills & Quarries Commodity Group
<http://www.emnrd.state.nm.us/MMD/index.htm>

Regional Hydrogeology:

Stone et al., 1983, Hydrogeology and Water Resources of the San Juan Basin, New Mexico; Socorro, New Mexico Bureau of Mines and Mineral Resources Hydrologic Report 6, 70 p.

Base Maps:

Petroleum Recovery Research Center
PRRC PitRule Web Mapping Portal
USGS Topo
TerraServer – US
www.pitrule.source3.com
