

District I
1625 N French Dr, Hobbs, NM 88240
District II
1301 W Grand Avenue, Artesia, NM 88210
District III
1000 Rio Brazos Road, Aztec, NM 87410
District IV
1220 S St Francis Dr, Santa Fe, NM 87505

State of New Mexico
Energy Minerals and Natural Resources
Department
Oil Conservation Division
1220 South St. Francis Dr.
Santa Fe, NM 87505

Form C-144
July 21, 2008

For temporary pits, closed-loop systems, and below-grade tanks, submit to the appropriate NMOCD District Office
For permanent pits and exceptions submit to the Santa Fe Environmental Bureau office and provide a copy to the appropriate NMOCD District Office

**Pit, Closed-Loop System, Below-Grade Tank, or
Proposed Alternative Method Permit or Closure Plan Application**

- Type of action: ☐ Permit of a pit, closed-loop system, below-grade tank, or proposed alternative method
☒ Closure of a pit, closed-loop system, below-grade tank, or proposed alternative method
☐ Modification to an existing permit
☐ Closure plan only submitted for an existing permitted or non-permitted pit, closed-loop system, below-grade tank, or proposed alternative method

Instructions: Please submit one application (Form C-144) per individual pit, closed-loop system, below-grade tank, or alternative request

Please be advised that approval of this request does not relieve the operator of liability should operations result in pollution of surface water, ground water or the environment. Nor does approval relieve the operator of its responsibility to comply with any other applicable governmental authority's rules, regulations, or ordinances.

Operator XTO Energy, Inc OGRID # 5380
Address 382 Road 3100, Aztec, New Mexico 87410
Facility or well name Schwerdtfeger 21 # 2
API Number 30-045-32277 OCD Permit Number 787
U/L or Qtr/Qtr E Section 21 Township 27N Range 11W County San Juan
Center of Proposed Design Latitude N 36 3351 Longitude W -108 0054 NAD ☐ 1927 ☒ 1983
Surface Owner ☒ Federal ☐ State ☐ Private ☐ Tribal Trust or Indian Allotment

2
☐ **Pit:** Subsection F or G of 19 15 17 11 NMAC
Temporary ☐ Drilling ☐ Workover
☐ Permanent ☐ Emergency ☐ Cavitation ☐ P&A
☐ Lined ☐ Unlined Liner type Thickness _____ mil ☐ LLDPE ☐ HDPE ☐ PVC ☐ Other DIST. 3
☐ String-Reinforced
Liner Seams ☐ Welded ☐ Factory ☐ Other _____ Volume _____ bbl Dimensions L _____ x W _____ x D _____

RCVD MAY 29 '12
OIL CONS. DIV.
DIST. 3

3
☐ **Closed-loop System:** Subsection H of 19 15 17 11 NMAC
Type of Operation ☐ P&A ☐ Drilling a new well ☐ Workover or Drilling (Applies to activities which require prior approval of a permit or notice of intent)
☐ Drying Pad ☐ Above Ground Steel Tanks ☐ Haul-off Bins ☐ Other _____
☐ Lined ☐ Unlined Liner type Thickness _____ mil ☐ LLDPE ☐ HDPE ☐ PVC ☐ Other _____
Liner Seams ☐ Welded ☐ Factory ☐ Other _____

4
☒ **Below-grade tank:** Subsection I of 19 15 17.11 NMAC
Volume 120 bbl Type of fluid Produced Water
Tank Construction material Steel
☐ Secondary containment with leak detection ☐ Visible sidewalls, liner, 6-inch lift and automatic overflow shut-off
☐ Visible sidewalls and liner ☒ Visible sidewalls only ☐ Not labeled
Liner type Thickness _____ mil ☐ HDPE ☐ PVC ☐ Other _____

5
☐ **Alternative Method:**
Submittal of an exception request is required Exceptions must be submitted to the Santa Fe Environmental Bureau office for consideration of approval

6

Fencing: Subsection D of 19 15 17 11 NMAC (*Applies to permanent pits, temporary pits, and below-grade tanks*)

- ☐ Chain link, six feet in height, two strands of barbed wire at top (*Required if located within 1000 feet of a permanent residence, school, hospital, institution or church*)
- ☐ Four foot height, four strands of barbed wire evenly spaced between one and four feet
- ☐ Alternate Please specify _____

7

Netting: Subsection E of 19.15 17.11 NMAC (*Applies to permanent pits and permanent open top tanks*)

- ☐ Screen ☐ Netting ☐ Other _____
- ☐ Monthly inspections (If netting or screening is not physically feasible)

8

Signs: Subsection C of 19 15 17 11 NMAC

- ☐ 12"x 24", 2" lettering, providing Operator's name, site location, and emergency telephone numbers
- ☐ Signed in compliance with 19.15 3 103 NMAC

9

Administrative Approvals and Exceptions:

Justifications and/or demonstrations of equivalency are required Please refer to 19 15 17 NMAC for guidance

Please check a box if one or more of the following is requested, if not leave blank:

- ☐ Administrative approval(s) Requests must be submitted to the appropriate division district or the Santa Fe Environmental Bureau office for consideration of approval
- ☐ Exception(s) Requests must be submitted to the Santa Fe Environmental Bureau office for consideration of approval

10.

Siting Criteria (regarding permitting): 19 15 17 10 NMAC

Instructions: *The applicant must demonstrate compliance for each siting criteria below in the application. Recommendations of acceptable source material are provided below. Requests regarding changes to certain siting criteria may require administrative approval from the appropriate district office or may be considered an exception which must be submitted to the Santa Fe Environmental Bureau office for consideration of approval. Applicant must attach justification for request. Please refer to 19.15.17.10 NMAC for guidance. Siting criteria does not apply to drying pads or above-grade tanks associated with a closed-loop system.*

Ground water is less than 50 feet below the bottom of the temporary pit, permanent pit, or below-grade tank - NM Office of the State Engineer - iWATERS database search, USGS, Data obtained from nearby wells	<input type="checkbox"/> Yes <input type="checkbox"/> No
Within 300 feet of a continuously flowing watercourse, or 200 feet of any other significant watercourse or lakebed, sinkhole, or playa lake (measured from the ordinary high-water mark) - Topographic map, Visual inspection (certification) of the proposed site	<input type="checkbox"/> Yes <input type="checkbox"/> No
Within 300 feet from a permanent residence, school, hospital, institution, or church in existence at the time of initial application (<i>Applies to temporary, emergency, or cavitation pits and below-grade tanks</i>) - Visual inspection (certification) of the proposed site, Aerial photo, Satellite image	<input type="checkbox"/> Yes <input type="checkbox"/> No <input type="checkbox"/> NA
Within 1000 feet from a permanent residence, school, hospital, institution, or church in existence at the time of initial application (<i>Applies to permanent pits</i>) - Visual inspection (certification) of the proposed site, Aerial photo, Satellite image	<input type="checkbox"/> Yes <input type="checkbox"/> No <input type="checkbox"/> NA
Within 500 horizontal feet of a private, domestic fresh water well or spring that less than five households use for domestic or stock watering purposes, or within 1000 horizontal feet of any other fresh water well or spring, in existence at the time of initial application - NM Office of the State Engineer - iWATERS database search, Visual inspection (certification) of the proposed site	<input type="checkbox"/> Yes <input type="checkbox"/> No
Within incorporated municipal boundaries or within a defined municipal fresh water well field covered under a municipal ordinance adopted pursuant to NMSA 1978, Section 3-27-3, as amended	<input type="checkbox"/> Yes <input type="checkbox"/> No
Within 500 feet of a wetland	<input type="checkbox"/> Yes <input type="checkbox"/> No
Within the area overlying a subsurface mine - Written confirmation or verification or map from the NM EMNRD-Mining and Mineral Division	<input type="checkbox"/> Yes <input type="checkbox"/> No
Within an unstable area - Engineering measures incorporated into the design, NM Bureau of Geology & Mineral Resources, USGS, NM Geological Society, Topographic map	<input type="checkbox"/> Yes <input type="checkbox"/> No
Within a 100-year floodplain FEMA map	<input type="checkbox"/> Yes <input type="checkbox"/> No

11

Temporary Pits, Emergency Pits, and Below-grade Tanks Permit Application Attachment Checklist: Subsection B of 19 15 17 9 NMAC**Instructions:** Each of the following items must be attached to the application. Please indicate, by a check mark in the box, that the documents are attached.

- ☐ Hydrogeologic Report (Below-grade Tanks) - based upon the requirements of Paragraph (4) of Subsection B of 19 15 17 9 NMAC
☐ Hydrogeologic Data (Temporary and Emergency Pits) - based upon the requirements of Paragraph (2) of Subsection B of 19 15 17.9 NMAC
☐ Siting Criteria Compliance Demonstrations - based upon the appropriate requirements of 19 15 17.10 NMAC
☐ Design Plan - based upon the appropriate requirements of 19 15 17 11 NMAC
☐ Operating and Maintenance Plan - based upon the appropriate requirements of 19 15.17 12 NMAC
☒ Closure Plan (Please complete Boxes 14 through 18, if applicable) - based upon the appropriate requirements of Subsection C of 19 15 17 9 NMAC and 19.15 17 13 NMAC
☐ Previously Approved Design (attach copy of design) API Number _____ or Permit Number _____

12

Closed-loop Systems Permit Application Attachment Checklist: Subsection B of 19 15 17 9 NMAC**Instructions:** Each of the following items must be attached to the application. Please indicate, by a check mark in the box, that the documents are attached.

- ☐ Geologic and Hydrogeologic Data (only for on-site closure) - based upon the requirements of Paragraph (3) of Subsection B of 19 15 17 9
☐ Siting Criteria Compliance Demonstrations (only for on-site closure) - based upon the appropriate requirements of 19 15.17.10 NMAC
☐ Design Plan - based upon the appropriate requirements of 19 15 17 11 NMAC
☐ Operating and Maintenance Plan - based upon the appropriate requirements of 19 15 17 12 NMAC
☐ Closure Plan (Please complete Boxes 14 through 18, if applicable) - based upon the appropriate requirements of Subsection C of 19 15 17 9 NMAC and 19 15 17 13 NMAC
☐ Previously Approved Design (attach copy of design) API Number _____
☐ Previously Approved Operating and Maintenance Plan API Number _____ (Applies only to closed-loop system that use above ground steel tanks or haul-off bins and propose to implement waste removal for closure)

13

Permanent Pits Permit Application Checklist: Subsection B of 19 15 17.9 NMAC**Instructions:** Each of the following items must be attached to the application. Please indicate, by a check mark in the box, that the documents are attached.

- ☐ Hydrogeologic Report - based upon the requirements of Paragraph (1) of Subsection B of 19 15 17 9 NMAC
☐ Siting Criteria Compliance Demonstrations - based upon the appropriate requirements of 19 15 17 10 NMAC
☐ Climatological Factors Assessment
☐ Certified Engineering Design Plans - based upon the appropriate requirements of 19 15 17 11 NMAC
☐ Dike Protection and Structural Integrity Design - based upon the appropriate requirements of 19 15 17 11 NMAC
☐ Leak Detection Design - based upon the appropriate requirements of 19 15.17 11 NMAC
☐ Liner Specifications and Compatibility Assessment - based upon the appropriate requirements of 19 15 17 11 NMAC
☐ Quality Control/Quality Assurance Construction and Installation Plan
☐ Operating and Maintenance Plan - based upon the appropriate requirements of 19 15 17 12 NMAC
☐ Freeboard and Overtopping Prevention Plan - based upon the appropriate requirements of 19 15 17 11 NMAC
☐ Nuisance or Hazardous Odors, including H₂S, Prevention Plan
☐ Emergency Response Plan
☐ Oil Field Waste Stream Characterization
☐ Monitoring and Inspection Plan
☐ Erosion Control Plan
☐ Closure Plan - based upon the appropriate requirements of Subsection C of 19.15.17 9 NMAC and 19 15 17 13 NMAC

14

Proposed Closure: 19 15 17 13 NMAC**Instructions:** Please complete the applicable boxes, Boxes 14 through 18, in regards to the proposed closure plan.

- Type: ☐ Drilling ☐ Workover ☐ Emergency ☐ Cavitation ☐ P&A ☐ Permanent Pit ☒ Below-grade Tank ☐ Closed-loop System
☐ Alternative
 Proposed Closure Method ☒ Waste Excavation and Removal
☐ Waste Removal (Closed-loop systems only)
☐ On-site Closure Method (Only for temporary pits and closed-loop systems)
☐ In-place Burial ☐ On-site Trench Burial
☐ Alternative Closure Method (Exceptions must be submitted to the Santa Fe Environmental Bureau for consideration)

15.

Waste Excavation and Removal Closure Plan Checklist: (19 15 17.13 NMAC) **Instructions:** Each of the following items must be attached to the closure plan. Please indicate, by a check mark in the box, that the documents are attached.

- ☒ Protocols and Procedures - based upon the appropriate requirements of 19.15.17 13 NMAC
☒ Confirmation Sampling Plan (if applicable) - based upon the appropriate requirements of Subsection F of 19 15 17 13 NMAC
☒ Disposal Facility Name and Permit Number (for liquids, drilling fluids and drill cuttings)
☒ Soil Backfill and Cover Design Specifications - based upon the appropriate requirements of Subsection H of 19 15 17 13 NMAC
☒ Re-vegetation Plan - based upon the appropriate requirements of Subsection I of 19 15 17 13 NMAC
☒ Site Reclamation Plan - based upon the appropriate requirements of Subsection G of 19 15 17 13 NMAC

16

Waste Removal Closure For Closed-loop Systems That Utilize Above Ground Steel Tanks or Haul-off Bins Only: (19.15.17 13 D NMAC)

Instructions: Please identify the facility or facilities for the disposal of liquids, drilling fluids and drill cuttings. Use attachment if more than two facilities are required.

Disposal Facility Name _____ Disposal Facility Permit Number _____

Disposal Facility Name _____ Disposal Facility Permit Number _____

Will any of the proposed closed-loop system operations and associated activities occur on or in areas that *will not* be used for future service and operations?

☐ Yes (If yes, please provide the information below) ☐ No

Required for impacted areas which will not be used for future service and operations

☐ Soil Backfill and Cover Design Specifications - based upon the appropriate requirements of Subsection H of 19 15 17 13 NMAC

☐ Re-vegetation Plan - based upon the appropriate requirements of Subsection I of 19 15 17 13 NMAC

☐ Site Reclamation Plan - based upon the appropriate requirements of Subsection G of 19.15 17 13 NMAC

17

Siting Criteria (regarding on-site closure methods only): 19 15 17 10 NMAC

Instructions: Each siting criteria requires a demonstration of compliance in the closure plan. Recommendations of acceptable source material are provided below. Requests regarding changes to certain siting criteria may require administrative approval from the appropriate district office or may be considered an exception which must be submitted to the Santa Fe Environmental Bureau office for consideration of approval. Justifications and/or demonstrations of equivalency are required. Please refer to 19.15.17.10 NMAC for guidance.

Ground water is less than 50 feet below the bottom of the buried waste - NM Office of the State Engineer - iWATERS database search, USGS, Data obtained from nearby wells	<input type="checkbox"/> Yes <input type="checkbox"/> No <input type="checkbox"/> NA
Ground water is between 50 and 100 feet below the bottom of the buried waste - NM Office of the State Engineer - iWATERS database search, USGS, Data obtained from nearby wells	<input type="checkbox"/> Yes <input type="checkbox"/> No <input type="checkbox"/> NA
Ground water is more than 100 feet below the bottom of the buried waste - NM Office of the State Engineer - iWATERS database search, USGS, Data obtained from nearby wells	<input type="checkbox"/> Yes <input type="checkbox"/> No <input type="checkbox"/> NA
Within 300 feet of a continuously flowing watercourse, or 200 feet of any other significant watercourse or lakebed, sinkhole, or playa lake (measured from the ordinary high-water mark) - Topographic map, Visual inspection (certification) of the proposed site	<input type="checkbox"/> Yes <input type="checkbox"/> No
Within 300 feet from a permanent residence, school, hospital, institution, or church in existence at the time of initial application - Visual inspection (certification) of the proposed site, Aerial photo, Satellite image	<input type="checkbox"/> Yes <input type="checkbox"/> No
Within 500 horizontal feet of a private, domestic fresh water well or spring that less than five households use for domestic or stock watering purposes, or within 1000 horizontal feet of any other fresh water well or spring, in existence at the time of initial application - NM Office of the State Engineer - iWATERS database, Visual inspection (certification) of the proposed site	<input type="checkbox"/> Yes <input type="checkbox"/> No
Within incorporated municipal boundaries or within a defined municipal fresh water well field covered under a municipal ordinance adopted pursuant to NMSA 1978, Section 3-27-3, as amended - Written confirmation or verification from the municipality, Written approval obtained from the municipality	<input type="checkbox"/> Yes <input type="checkbox"/> No
Within 500 feet of a wetland - US Fish and Wildlife Wetland Identification map, Topographic map, Visual inspection (certification) of the proposed site	<input type="checkbox"/> Yes <input type="checkbox"/> No
Within the area overlying a subsurface mine - Written confirmation or verification or map from the NM EMNRD-Mining and Mineral Division	<input type="checkbox"/> Yes <input type="checkbox"/> No
Within an unstable area - Engineering measures incorporated into the design, NM Bureau of Geology & Mineral Resources, USGS, NM Geological Society, Topographic map	<input type="checkbox"/> Yes <input type="checkbox"/> No
Within a 100-year floodplain - FEMA map	<input type="checkbox"/> Yes <input type="checkbox"/> No

18

On-Site Closure Plan Checklist: (19 15 17 13 NMAC) **Instructions:** Each of the following items must be attached to the closure plan. Please indicate, by a check mark in the box, that the documents are attached.

- ☐ Siting Criteria Compliance Demonstrations - based upon the appropriate requirements of 19 15 17 10 NMAC
- ☐ Proof of Surface Owner Notice - based upon the appropriate requirements of Subsection F of 19 15 17 13 NMAC
- ☐ Construction/Design Plan of Burial Trench (if applicable) based upon the appropriate requirements of 19 15.17.11 NMAC
- ☐ Construction/Design Plan of Temporary Pit (for in-place burial of a drying pad) - based upon the appropriate requirements of 19 15 17 11 NMAC
- ☐ Protocols and Procedures - based upon the appropriate requirements of 19 15.17 13 NMAC
- ☐ Confirmation Sampling Plan (if applicable) - based upon the appropriate requirements of Subsection F of 19 15 17 13 NMAC
- ☐ Waste Material Sampling Plan - based upon the appropriate requirements of Subsection F of 19 15 17 13 NMAC
- ☐ Disposal Facility Name and Permit Number (for liquids, drilling fluids and drill cuttings or in case on-site closure standards cannot be achieved)
- ☐ Soil Cover Design - based upon the appropriate requirements of Subsection H of 19 15 17.13 NMAC
- ☐ Re-vegetation Plan - based upon the appropriate requirements of Subsection I of 19.15 17.13 NMAC
- ☐ Site Reclamation Plan - based upon the appropriate requirements of Subsection G of 19 15 17 13 NMAC

19

Operator Application Certification:

I hereby certify that the information submitted with this application is true, accurate and complete to the best of my knowledge and belief

Name (Print) Kurt Hoekstra Title Sr Environmental Technician

Signature Kurt Hoekstra Date 5-24-2012

E-mail address Kurt_Hoeksatra@xtoenergy.com Telephone 505-333-3202

20

OCD Approval: ☐ Permit Application (including closure plan) ☒ Closure Plan (only) ☐ OCD Conditions (see attachment)

OCD Representative Signature: Gerald D. Kelly Approval Date: 6/01/2012 10-7-2008

Title: Compliance Officer OCD Permit Number: 787

21

Closure Report (required within 60 days of closure completion): Subsection K of 19.15 17 13 NMAC

Instructions: Operators are required to obtain an approved closure plan prior to implementing any closure activities and submitting the closure report. The closure report is required to be submitted to the division within 60 days of the completion of the closure activities. Please do not complete this section of the form until an approved closure plan has been obtained and the closure activities have been completed.

☐ Closure Completion Date: November 1, 2011

22

Closure Method:

☒ Waste Excavation and Removal ☐ On-Site Closure Method ☐ Alternative Closure Method ☐ Waste Removal (Closed-loop systems only)
☐ If different from approved plan, please explain.

23

Closure Report Regarding Waste Removal Closure For Closed-loop Systems That Utilize Above Ground Steel Tanks or Haul-off Bins Only:

Instructions: Please identify the facility or facilities for where the liquids, drilling fluids and drill cuttings were disposed. Use attachment if more than two facilities were utilized.

Disposal Facility Name: _____ Disposal Facility Permit Number _____

Disposal Facility Name _____ Disposal Facility Permit Number _____

Were the closed-loop system operations and associated activities performed on or in areas that *will not* be used for future service and operations?

☐ Yes (If yes, please demonstrate compliance to the items below) ☐ No

Required for impacted areas which will not be used for future service and operations

- ☐ Site Reclamation (Photo Documentation)
☐ Soil Backfilling and Cover Installation
☐ Re-vegetation Application Rates and Seeding Technique

24

Closure Report Attachment Checklist: *Instructions: Each of the following items must be attached to the closure report. Please indicate, by a check mark in the box, that the documents are attached.*

- ☒ Proof of Closure Notice (surface owner and division)
☐ Proof of Deed Notice (required for on-site closure)
☐ Plot Plan (for on-site closures and temporary pits)
☒ Confirmation Sampling Analytical Results (if applicable)
☐ Waste Material Sampling Analytical Results (required for on-site closure)
☒ Disposal Facility Name and Permit Number
☒ Soil Backfilling and Cover Installation
☒ Re-vegetation Application Rates and Seeding Technique
☒ Site Reclamation (Photo Documentation)

On-site Closure Location Latitude _____ Longitude _____ NAD ☐ 1927 ☐ 1983

25

Operator Closure Certification:

I hereby certify that the information and attachments submitted with this closure report is true, accurate and complete to the best of my knowledge and belief. I also certify that the closure complies with all applicable closure requirements and conditions specified in the approved closure plan.

Name (Print). Kurt Hoekstra Title Sr Environmental Technician

Signature Kurt Hoekstra Date 5-24-2012

E-mail address Kurt_Hoekstra@xtoenergy.com Telephone 505-333-3100

District I
1625 N French Dr, Hobbs, NM 88240
District II
1301 W Grand Avenue, Artesia, NM 88210
District III
1000 Rio Brazos Road, Aztec, NM 87410
District IV
1220 S St Francis Dr, Santa Fe, NM 87505

State of New Mexico
Energy Minerals and Natural Resources

Oil Conservation Division
1220 South St. Francis Dr.
Santa Fe, NM 87505

Form C-141
Revised October 10, 2003

Submit 2 Copies to appropriate
District Office in accordance
with Rule 116 on back
side of form

Release Notification and Corrective Action

OPERATOR

☐ Initial Report ☒ Final Report

Name of Company: XTO Energy, Inc	Contact: Kurt Hoekstra
Address: 382 Road 3100, Aztec, New Mexico 87410	Telephone No (505) 333-3100
Facility Name: Schwerdtfeger 21 # 2 (30-045-32277)	Facility Type: Gas Well (Fruitland Coal)

Surface Owner Federal	Mineral Owner	Lease No.: NMSF080382A
-----------------------	---------------	------------------------

LOCATION OF RELEASE

Unit Letter E	Section 21	Township 27N	Range 11W	Feet from the 1385	North/South Line FNL	Feet from the 765	East/West Line FWL	County San Juan
------------------	---------------	-----------------	--------------	-----------------------	-------------------------	----------------------	-----------------------	--------------------

Latitude: 36.3351 Longitude: -108.0054

NATURE OF RELEASE

Type of Release: Produced Water	Volume of Release: unknown	Volume Recovered: None
Source of Release: Below Grade Tank	Date and Hour of Occurrence: Unknown	Date and Hour of Discovery: NA
Was Immediate Notice Given? <input type="checkbox"/> Yes <input type="checkbox"/> No <input checked="" type="checkbox"/> Not Required	If YES, To Whom?	
By Whom?	Date and Hour	
Was a Watercourse Reached? <input type="checkbox"/> Yes <input checked="" type="checkbox"/> No	If YES, Volume Impacting the Watercourse	

If a Watercourse was Impacted, Describe Fully *


Describe Cause of Problem and Remedial Action Taken.* The below grade tank was taken out of service at the Schwerdtfeger 21 # 2 well site due to plugging and abandoning of this location. A composite sample was collected beneath the location of the on-site BGT, and submitted for laboratory analysis for TPH via USEPA Method 418.1 and 8015, benzene and BTEX via USEPA Method 8021, and for total chlorides. The sample returned results below the 'Pit Rule' spill confirmation standards for TPH, Benzene and Total BTEX, but above the 'pit rule' standards for Chlorides of 250 ppm at 320 ppm, confirming that a release had occurred at this location. The site was then ranked according to the NMOCD Guidelines for the Remediation of Leaks, Spills and Releases. The site was ranked a 0 due to an estimated depth to groundwater of greater than 100 feet and a distance to surface water of greater than 1,000 feet. This set the closure standard to 5000 ppm TPH, 10 ppm benzene, and 50 ppm total BTEX.

Describe Area Affected and Cleanup Action Taken *

The NMOCD Guidelines for the Remediation of Leaks, Spills and Releases does not cite a standard for chlorides. The sample returned results below the regulatory standards for all constituents analyzed. No further action is necessary. Analytical results are attached for your reference.

I hereby certify that the information given above is true and complete to the best of my knowledge and understand that pursuant to NMOCD rules and regulations all operators are required to report and/or file certain release notifications and perform corrective actions for releases which may endanger public health or the environment. The acceptance of a C-141 report by the NMOCD marked as "Final Report" does not relieve the operator of liability should their operations have failed to adequately investigate and remediate contamination that pose a threat to ground water, surface water, human health or the environment. In addition, NMOCD acceptance of a C-141 report does not relieve the operator of responsibility for compliance with any other federal, state, or local laws and/or regulations.

OIL CONSERVATION DIVISION

Signature 	Approved by District Supervisor		
Printed Name: Kurt Hoekstra			
Title: Sr Environmental Technician	Approval Date:	Expiration Date:	
E-mail Address: Kurt.Hoekstra@xtoenergy.com	Conditions of Approval		Attached <input type="checkbox"/>
Date: 5-24-2012	Phone: 505-333-3202		

XTO Energy Inc. San Juan Basin Below Grade Tank Closure Report

Lease Name: Schwerdtfeger 21 # 2

API No.: 30-045-32277

Description: Unit E, Section 21, Township 27N, Range 11W, San Juan County

In accordance with Rule 19.15.17.13 NMAC the following information describes the closure requirements of below-grade tanks on XTO Energy Inc. (XTO) locations. This is XTO's standard procedure for all below-grade tanks. A separate plan will be submitted for any below-grade tank which does not conform to this plan.

General Plan

1. XTO will close below-grade tanks within the time periods provided in 19.15.17.13 NMAC, or by an earlier date that the division requires because of imminent danger to fresh water, public health or the environment.
Closure Date is November 1, 2011
2. XTO will close a below-grade tank that does not meet the requirements of Paragraphs (1) through (4) of Subsection I of 19.15.17.11 NMAC or is not included in Paragraph (5) of Subsection I of 19.15.17.11 NMAC within five years after June 16, 2008, if not retrofitted to comply with Paragraphs (1) through (4) of Subsection I of 19.15.17.11 NMAC.
Closure Date is November 1, 2011
3. XTO will close a permitted below-grade tank within 60 days of cessation of the below-grade tank's operation or as required by the transitional provisions of Subsection B of 19.15.17.17 NMAC in accordance with a closure plan that the appropriate division district office approves. The closure report will be filed on form C-144.
Required C-144 Form is attached to this document.
4. XTO will remove liquids and sludge from below-grade tanks prior to implementing a closure method and will dispose of the liquids and sludge in a division-approved facility. Approved facilities and waste streams include:
 - Envirotech Permit No. NM01-0011 and IEI Permit No. NM 01-0010B
 - Soil contaminated by exempt petroleum hydrocarbons
 - Produced sand, pit sludge and contaminated bottoms from storage of exempt wastes
 - Basin Disposal Permit No. NM01-005
 - Produced water**All liquids and sludge were removed from the tank prior to closure activities.**
5. XTO will remove the below-grade tank and dispose of it in a division approved facility or recycle, reuse, or reclaim it in a manner that the appropriate division district office approves.
XTO has removed the below grade tank, and will dispose of it at a division approved facility, or recycle, reclaim or reuse it in a manner that is approved by the division.

6. XTO will remove any on-site equipment associated with a below-grade tank unless the equipment is required for some other purpose.

All equipment has been removed due to the plugging and abandoning of the Schwerdtfeger 21 # 2

7. XTO will test the soils beneath the below-grade tank to determine whether a release has occurred. At a minimum 5 point composite sample will be collected along with individual grab samples from any area that is wet, discolored or showing other evidence of a release. Samples will be analyzed for BTEX, TPH and chlorides to demonstrate that the benzene concentration, as determined by EPA SW-846 methods 8021B or 8260B or EPA method that the division approves, does not exceed 0.2 mg/kg; total BTEX concentration, as determined by EPA SW-846 methods 8021B or 8260B or other EPA method that the division approves, does not exceed 50 mg/kg; the TPH concentration, as determined by EPA method 418.1 or other EPA method that the division approves, does not exceed 100mg/kg; and the chloride concentration, as determined by EPA method 300.1 or other EPA method that the division approves, does not exceed 250 mg/kg, or the background concentration, whichever is greater. XTO will notify the division of its results on form C-141.

A five point composite sample was taken of the pit using sampling tools and all samples tested per Subsection B of 19.15.17.1 3(B)(1)(b). (Sample results attached).

Components	Test Method	Limit (mg/Kg)	Results (mg/Kg)
Benzene	EPA SW-846 8021B or 8260B	0.2	< 0.050 mg/kg
BTEX	EPA SW-846 8021B or 8260B	50	< 0.249 ug/kg
TPH	EPA SW-846 418.1	100	< 20 mg/kg
Chlorides	EPA 300.1	250 or background	320 mg/kg

8. If XTO or the division determines that a release has occurred, XTO will comply with 19.15.3.116 NMAC and 19.15.1.19NMAC as appropriate.
Due to Chloride results of 320 PPM, a release has been confirmed for this location. A C-141 Release Notification form will be sent outlining any remediation activities taken regarding this release.
9. If the sampling program demonstrates that a release has not occurred or that any release does not exceed the concentrations specified in Paragraph (4) of Subsection E of 19.15.17.13 NMAC, XTO will backfill the excavation with compacted, non-waste containing, earthen material; construct a division prescribed soil cover; recontour and re-vegetate the site.
The pit cellar was backfilled using compacted, non-waste containing earthen material, with a division prescribed soil cover.
10. Notice of Closure operations will be given to the Aztec Division District III office between 72 hours and one week prior to the start of closure activities via email or verbally.
The notification will include the following:
- Operator's name
 - Well Name and API Number
 - Location by Unit Letter, Section, Township, and Range

Notification was provided to Mr. Brandon Powell with the Aztec office of the OCD via email on October 27,2011; see attached email printout.

The surface owner shall be notified of XTO's proposal to close the BGT as per the approved closure plan using certified mail, return receipt requested.

The surface owner was notified on October 27, 2011; see attached letter and return receipt.

11. Re-contouring of location will match fit, shape, line, form and texture of the surrounding area. Re-shaping will include drainage control, prevent ponding, and prevent erosion. Natural drainages will be unimpeded and water bars and/or silt traps will be placed in areas where needed to prevent erosion on a large scale. Final re-contour shall have a uniform appearance with smooth surface, fitting the natural landscape.

The location has been recontoured to match the above specifications

12. A minimum of 4 feet of cover shall be achieved and the cover shall include 1 foot of suitable material to establish vegetation at the site, or the background thickness of topsoil, whichever is greater.

The site has been backfilled to match these specifications.

13. XTO will seed the disturbed areas the first growing season after the operator closes the pit. Seeding will be accomplished via drilling on the contour whenever practical or by other division-approved methods. BLM or Forest Service stipulated seed mixes will be used on federal lands. Vegetative cover will equal 70% of the native perennial vegetative cover (un-impacted) consisting of at least three native plant species, including at least one grass, but not including noxious weeds, and maintain that cover through two successive growing seasons. Repeat seeding or planting will be continued until successful vegetative growth occurs.

Site will be reclaimed pursuant to the BLM MOU.

14. All closure activities will include proper documentation and be available for review upon request and will be submitted in closure report form to OCD within 60 days of closure of the below-grade tank. Closure report will be filed on form C-144 and incorporate the following:

- i. Proof of closure notice to division and surface owner; **attached**
- ii. Details on capping and covering, where applicable; **per OCD Specifications**
- iii. Inspection reports; **attached**
- iv. Confirmation sampling analytical results; **attached**
- v. Disposal facility name(s) and permit number(s); **see above**
- vi. Soil backfilling and cover installation; **per OCD Specifications**
- vii. Re-vegetation application rates and seeding techniques, (or approved alternative to re-vegetation requirements if applicable); **Per BLM MOU.**
- viii. Photo documentation of the site reclamation. **attached**

15. This closure report is being submitted after the 60 day deadline required by the 'Pit Rule' due to a unforeseen delay on final reclamation of this well site. This delay was due to the gathering company not removing their equipment in a timely fashion.



"Kelly, Jonathan, EMNRD"
<Jonathan.Kelly@state.nm.us>

05/11/2012 09 24 AM

To "Kurt_Hoekstra@xtoenergy.com"
<Kurt_Hoekstra@xtoenergy.com>

cc

bcc

Subject RE. BGT Closure Plan

Kurt,

Our records show that the permit received on 9/4/2008 and issued the permit number 787 was approved on 10/07/2008. I checked the well file for the document but did not find it, so it is possible that it had been sent to Santa Fe for scanning. Either way, you can use this email as a notice of approval for the closure.

Jonathan D. Kelly
Compliance Officer
Oil Conservation Division
Energy, Minerals, & Natural Resources
1000 Rio Brazos, Aztec, NM 87410
(505)334-6178 ext 122
jonathan.kelly@state.nm.us

From: Kurt_Hoekstra@xtoenergy.com [mailto:Kurt_Hoekstra@xtoenergy.com]

Sent: Friday, May 11, 2012 9:06 AM

To: Kelly, Jonathan, EMNRD

Subject: BGT Closure Plan

Jonathan,

Please accept this email as a request for approval of the closure plan only for the BGT at the

Schwerdtfeger 21 # 2 location (API # 30-045-32277) located in Unit E, Section 21, Township

27N, Range 11W, Lat N 36* 3351 Long W108* 0054 San Juan County, New Mexico Our records show that this closure plan was

submitted to your office on 9/4/2008 This tank will no longer be used due to the plugging and

abandoning of this location I am attaching a copy of our closure plan for this location

Thank you for your time in regards to this matter

Kurt Hoekstra
Sr Environmental Technician
XTO Energy

Kurt Hoekstra/FAR/CTOC
05/11/2012 08:16 AM

To: jonathan.kelly@state.nm.us
cc:
bcc:
Subject: BGT Closure Plan

Jonathan,

Please accept this email as a request for approval of the closure plan only for the BGT at the
Schwerdtfeger 21 # 2 location (API # 30-045-32277) located in Unit E, Section 21, Township
27N, Range 11W, Lat. N 36° 33'51" Long. W 108° 00'54" San Juan County, New Mexico. Our records show
that this closure plan was
submitted to your office on 9/4/2008. This tank will no longer be used due to the plugging and
abandoning of this location. I am attaching a copy of our closure plan for this location.
Thank you for your time in regards to this matter.



BGT Closure Plan.doc
Kurt Hoekstra
Sr. Environmental Technician
XTO Energy
505-333-3202 Office
505-486-9543 Cell
Kurt.Hoekstra@xtoenergy.com



James McDaniel /FAR/CTOC

10/27/2011 12 23 PM

To Mark_Kelly@blm.gov

cc

bcc

Subject BGT Closure Schwerdtfeger 21 #2

Mark,

Please accept this email as the required notification for BGT closure activities at the Schwerdtfeger 21 #2 well site (api# 30-045-32277) located in Unit E, Section 21, Township 27N, Range 11W, San Juan County, New Mexico. The BGT will be closed by excavation and removal. Thank you for your time in regards to this matter.



James McDaniel, CHMM #15676

EH&S Supervisor

XTO Energy, Inc.

Office # 505-333-3701

Cell # 505-787-0519

James_Mcdaniel@xtoenergy.com



James McDaniel /FAR/CTOC

10/27/2011 12 22 PM

To brandon.powell@state.nm.us

cc

bcc

Subject Schwerdtfeger 21 #2 BGT Closure

Brandon,

Please accept this email as the required notification for BGT closure activities at the Schwerdtfeger 21 #2 well site (api# 30-045-32277) located in Unit E, Section 21, Township 27N, Range 11W, San Juan County, New Mexico. Thank you for your time in regards to this matter.



James McDaniel, CHMM #15676

EH&S Supervisor

XTO Energy, Inc.

Office # 505-333-3701

Cell # 505-787-0519

James_Mcdaniel@xtoenergy.com

COVER LETTER

Wednesday, June 08, 2011

James McDaniel
XTO Energy
382 County Road 3100
Aztec, NM 87410

TEL: (505) 787-0519
FAX (505) 333-3280

RE: Schwedtfeger 21#2

Order No.: 1106109

Dear James McDaniel:


Hall Environmental Analysis Laboratory, Inc. received 1 sample(s) on 6/2/2011 for the analyses presented in the following report.

These were analyzed according to EPA procedures or equivalent. To access our accredited tests please go to www.hallenvironmental.com or the state specific web sites. See the sample checklist and/or the Chain of Custody for information regarding the sample receipt temperature and preservation. Data qualifiers or a narrative will be provided if the sample analysis or analytical quality control parameters require a flag.

All samples are reported as received unless otherwise indicated.

Please do not hesitate to contact HEAL for any additional information or clarifications.

Sincerely,


Andy Freeman, Laboratory Manager

NM Lab # NM9425 NM0901
AZ license # AZ0682



Hall Environmental Analysis Laboratory, Inc.

Date: 08-Jun-11

Analytical Report

CLIENT:	XTO Energy	Client Sample ID:	BGT closure comp.
Lab Order:	1106109	Collection Date:	6/1/2011 8:22:00 AM
Project:	Schwedtfeger 21#2	Date Received:	6/2/2011
Lab ID:	1106109-01	Matrix:	SOIL

Analyses	Result	PQL	Qual	Units	DF	Date Analyzed
EPA METHOD 8015B: DIESEL RANGE ORGANICS						Analyst: JB
Diesel Range Organics (DRO)	ND	9.6		mg/Kg	1	6/5/2011 6:21:28 PM
Surr: DNOP	99.6	73.4-123		%REC	1	6/5/2011 6:21:28 PM
EPA METHOD 8015B: GASOLINE RANGE						Analyst: NSB
Gasoline Range Organics (GRO)	ND	5.0		mg/Kg	1	6/3/2011 11:14:44 PM
Surr: BFB	110	89.7-125		%REC	1	6/3/2011 11:14:44 PM
EPA METHOD 8021B: VOLATILES						Analyst: NSB
Benzene	ND	0.050		mg/Kg	1	6/3/2011 11:14:44 PM
Toluene	ND	0.050		mg/Kg	1	6/3/2011 11:14:44 PM
Ethylbenzene	ND	0.050		mg/Kg	1	6/3/2011 11:14:44 PM
Xylenes, Total	ND	0.099		mg/Kg	1	6/3/2011 11:14:44 PM
Surr: 4-Bromofluorobenzene	106	85.3-139		%REC	1	6/3/2011 11:14:44 PM
EPA METHOD 300.0: ANIONS						Analyst: SRM
Chloride	320	30		mg/Kg	20	6/6/2011 12:43:11 PM
EPA METHOD 418.1: TPH						Analyst: JB
Petroleum Hydrocarbons, TR	ND	20		mg/Kg	1	6/7/2011

Qualifiers:

* Value exceeds Maximum Contaminant Level
E Estimated value
J Analyte detected below quantitation limits
NC Non-Chlorinated
PQL Practical Quantitation Limit

B Analyte detected in the associated Method Blank
H Holding times for preparation or analysis exceeded
MCL Maximum Contaminant Level
ND Not Detected at the Reporting Limit
S Spike recovery outside accepted recovery limits

QA/QC SUMMARY REPORT

Client: XTO Energy
Project: Schwedtfeger 21#2

Work Order: 1106109

Analyte	Result	Units	PQL	SPK Va	SPK ref	%Rec	LowLimit	HighLimit	%RPD	RPDLimit	Qual
Method: EPA Method 300.0: Anions											
Sample ID: MB-27061		MBLK					Batch ID 27061	Analysis Date			6/6/2011 10 06 26 AM
Chloride	ND	mg/Kg	1.5								
Sample ID: LCS-27061		LCS					Batch ID 27061	Analysis Date			6/6/2011 10 23 51 AM
Chloride	14.31	mg/Kg	1.5	15	0	95.4	90	110			
Method: EPA Method 418.1: TPH											
Sample ID: MB-27069		MBLK					Batch ID 27069	Analysis Date			6/7/2011
Petroleum Hydrocarbons, TR	ND	mg/Kg	20								
Sample ID: LCS-27069		LCS					Batch ID 27069	Analysis Date			6/7/2011
Petroleum Hydrocarbons, TR	97.86	mg/Kg	20	100	0	97.9	81.4	118			
Sample ID: LCSD-27069		LCSD					Batch ID 27069	Analysis Date			6/7/2011
Petroleum Hydrocarbons, TR	100.7	mg/Kg	20	100	0	101	81.4	118	2.82	8.58	
Method: EPA Method 8015B: Diesel Range Organics											
Sample ID: MB-27064		MBLK					Batch ID 27064	Analysis Date			6/5/2011 4 38 19 PM
Diesel Range Organics (DRO)	ND	mg/Kg	10								
Sample ID: LCS-27064		LCS					Batch ID 27064	Analysis Date			6/5/2011 5 12.42 PM
Diesel Range Organics (DRO)	45.05	mg/Kg	10	50	0	90.1	66.7	119			
Sample ID: LCSD-27064		LCSD					Batch ID 27064	Analysis Date			6/5/2011 5 47 05 PM
Diesel Range Organics (DRO)	48.89	mg/Kg	10	50	0	97.8	66.7	119	8.19	18.9	
Method: EPA Method 8021B: Volatiles											
Sample ID: 1106109-01BMSD		MSD					Batch ID 27056	Analysis Date			6/3/2011 7 52 43 PM
Benzene	1.047	mg/Kg	0.050	0.990	0.0169	104	67.2	113	8.76	14.3	
Toluene	1.065	mg/Kg	0.050	0.990	0.0123	106	62.1	116	5.05	15.9	
Ethylbenzene	1.085	mg/Kg	0.050	0.990	0	110	67.9	127	4.02	14.4	
Xylenes, Total	3.284	mg/Kg	0.099	2.97	0	111	60.6	134	4.97	12.6	
Sample ID: 1106109-01BMS		MS					Batch ID 27056	Analysis Date			6/3/2011 7 23 52 PM
Benzene	0.9593	mg/Kg	0.050	0.992	0.0169	95.0	67.2	113			
Toluene	1.012	mg/Kg	0.050	0.992	0.0123	101	62.1	116			
Ethylbenzene	1.043	mg/Kg	0.050	0.992	0	105	67.9	127			
Xylenes, Total	3.125	mg/Kg	0.099	2.976	0	105	60.6	134			

Qualifiers:

E Estimated value
J Analyte detected below quantitation limits
ND Not Detected at the Reporting Limit

H Holding times for preparation or analysis exceeded
NC Non-Chlorinated
R RPD outside accepted recovery limits

Hall Environmental Analysis Laboratory, Inc.

Sample Receipt Checklist

Client Name XTO ENERGY

Date Received

6/2/2011

Work Order Number 1106109

Received by LNM

Checklist completed by:

Signature

Date

Sample ID labels checked by

Initials

Matrix

Carrier name Greyhound

Shipping container/cooler in good condition?

Yes ☒

No ☐

Not Present ☐

Custody seals intact on shipping container/cooler?

Yes ☒

No ☐

Not Present ☐

Not Shipped ☐

Custody seals intact on sample bottles?

Yes ☐

No ☐

N/A ☒

Chain of custody present?

Yes ☒

No ☐

Chain of custody signed when relinquished and received?

Yes ☒

No ☐

Chain of custody agrees with sample labels?

Yes ☒

No ☐

Samples in proper container/bottle?

Yes ☒

No ☐

Sample containers intact?

Yes ☒

No ☐

Sufficient sample volume for indicated test?

Yes ☒

No ☐

All samples received within holding time?

Yes ☒

No ☐

Water - VOA vials have zero headspace?

No VOA vials submitted ☒

Yes ☐

No ☐

Number of preserved bottles checked for pH

Water - Preservation labels on bottle and cap match?

Yes ☐

No ☐

N/A ☒

Water - pH acceptable upon receipt?

Yes ☐

No ☐

N/A ☒

<2 >12 unless noted below

Container/Temp Blank temperature?

2.0°

<6° C Acceptable

If given sufficient time to cool

COMMENTS.

Client contacted

Date contacted:

Person contacted

Contacted by:

Regarding

Comments

Corrective Action

Chain-of-Custody Record		Turn-Around Time:
Client: <u>XTO</u>	<input checked="" type="checkbox"/> Standard <input type="checkbox"/> Rush _____	
Mailing Address: <u>382 Road 3100</u> <u>Aztec, NM 87410</u>	Project Name: <u>Schvedt-Reger 21#2</u>	
Phone #: <u>505-787-0519</u>	Project #: <u>0</u>	
email or Fax#: <u>james.mcdaniel@xtoenergy.com</u>	<u>BGT Closure Composite</u>	
QA/QC Package: <input type="checkbox"/> Standard <input type="checkbox"/> Level 4 (Full Validation)	Project Manager: <u>James McDaniel</u>	
Accreditation <input type="checkbox"/> NELAP <input type="checkbox"/> Other _____	Sampler: <u>Walt Howard</u>	
<input type="checkbox"/> EDD (Type) _____	On Ice: <input checked="" type="checkbox"/> Yes <input type="checkbox"/> No	
	Sample Temperature: <u>2.0</u>	

☒ Standard ☐ Rush

Project Name:

Project #:

Project Manager:

Sampler: Walt Howard

On Ice: ☒ Yes ☐ No

Sample Temperature: 24.6

Container Type and #	Material	Quantity	Remarks
1
2
3
4
5
6
7
8
9
10
11
12
13
14
15
16
17
18
19
20
21
22
23
24
25
26
27
28
29
30
31
32
33
34
35
36
37
38
39
40
41
42
43
44
45
46
47
48
49
50
51
52
53
54
55
56
57
58
59
60
61
62
63
64
65
66
67
68
69
70
71
72
73
74
75
76
77
78
79
80
81
82
83
84
85
86
87
88
89
90
91
92
93
94
95
96
97
98
99
100

[illegible]

HEALING

11061091

www.hallenvironmental.com

4901 Hawkins NE - Albuquerque, NM 87109

Tel 505-345-3975 Fax 505-345-4107

Analysis Request

	X	BTEX + MTBE + TMB's (8021)
		BTEX + MTBE + TPH (Gas only)
	X	TPH Method 8015B (Gas/Diesel)
	X	TPH (Method 418.1)
		EDB (Method 504.1)
		8310 (PNA or PAH)
		RCRA 8 Metals
		Anions (F, Cl, NO ₃ , NO ₂ , PO ₄ , SO ₄)
		8081 Pesticides / 8082 PCB's
		8260B (VOA)
		8270 (Semi-VOA)
	X	Chlorides
		Air Bubbles (Y or N)

Date: 6/1/11	Time: 1142	Relinquished by: W. H. Howard
-----------------	---------------	----------------------------------

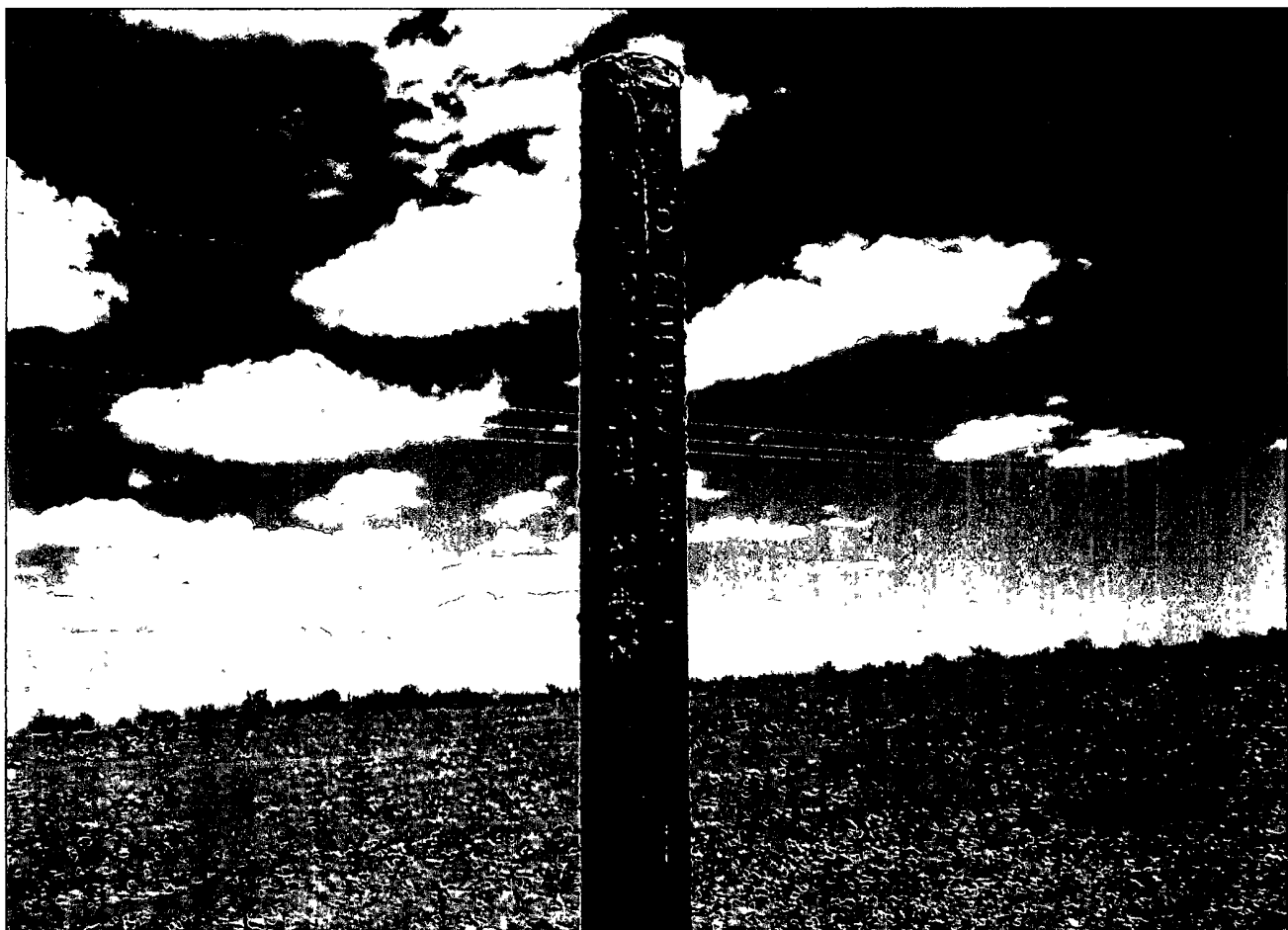
Date:	Time	Relinquished by:
6/1/11	1527	Christine Waelen

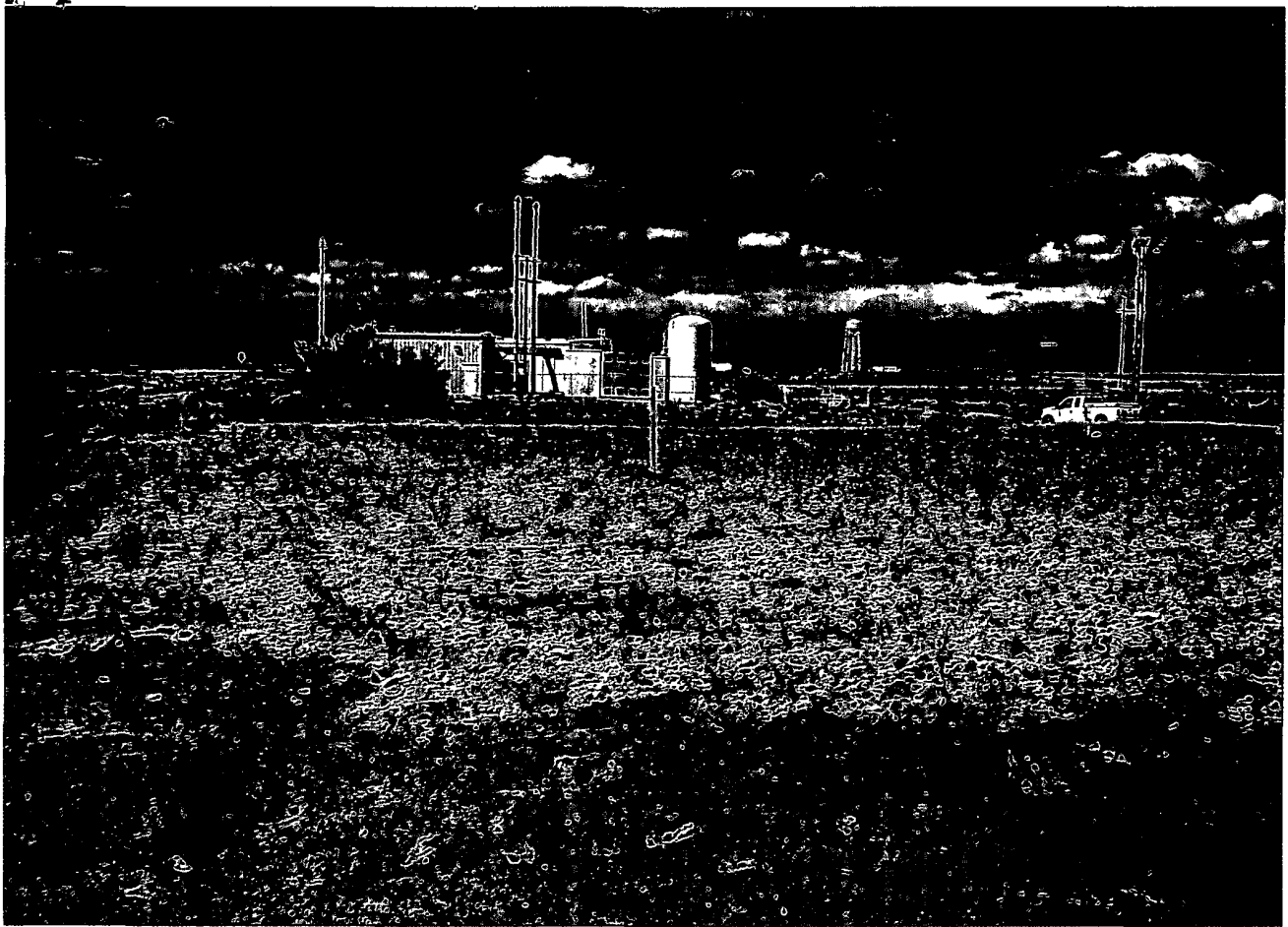
Received by	Date	Time
Master Walters	6/1/11	1142

Received by	Date	Time
<i>[Signature]</i>	6/2/11	8:38

Remarks:

If necessary, samples submitted to Hall Environmental may be subcontracted to other accredited laboratories. This serves as notice of this possibility. Any sub-contracted data will be clearly notated on the analytical report.







Denver

Well Below Tank Inspection Report

04/06/2012

Dates -
06/01/2008 - 04/01/2012

Type Route Stop

Type Value S

RouteName	StopName	Pumper	Foreman	WellName	APIWellNumber	Section	Range	Township
DEN NM Run 52	SCHWERTFEGER 21 002	Martinez, Crystal	Trobaugh, Robert	SCHWERTFEGER 21 02 (PA)	3004532277	21	11W	27N

InspectorName	Inspection Date	Inspection Time	Visible Liner Tears	Visible Tank Leak Overflow	Collection Of Surface Run	Visible Layer Oil	Visible Leak	Freeboard Est FT	Pit Location	Pit Type	Notes
Larry Bingham	09/15/2008	12 50	No	No	No	No	No	5			
Larry Bingham	10/25/2008	09 45	No	No	No	No	No	4	Well Water P	Below Ground	
Larry Bingham	11/05/2008	11 00	No	No	No	No	No	4	Well Water P	Below Ground	
Larry Bingham	01/09/2009	02 20	No	No	No	No	No	4	Well Water P	Below Ground	
Larry Bingham	02/23/2009	11 05	No	No	No	No	No	4	Well Water P	Below Ground	
Larry Bingham	03/20/2009	11 25	No	No	No	No	No	4	Well Water P	Below Ground	
Larry Bingham	04/11/2009	12 00	No	No	No	No	No	4	Well Water P	Below Ground	
Larry Bingham	05/04/2009	11 50	No	No	No	No	No	4	Well Water P	Below Ground	
	06/13/2009	00 00 00						0			
Larry Bingham	08/31/2009	02 45	No	No	No	No	No	4	Well Water P	Below Ground	
Larry Bingham	09/20/2009	10 20	No	No	No	No	No	4	Well Water P	Below Ground	
Larry Bingham	10/11/2009	02 15	No	No	No	No	No	4	Well Water P	Below Ground	
Larry Bingham	11/17/2009	01 25	No	No	No	No	No	4	Well Water P	Below Ground	
Larry Bingham	01/19/2010	01 00	No	No	No	No	No	4	Well Water P	Below Ground	
Larry Bingham	02/10/2010	10 15	No	No	No	No	No	4	Well Water P	Below Ground	
Larry Bingham	03/02/2010	02 50	No	No	No	No	No	4	Well Water P	Below Ground	
Larry Bingham	05/17/2010	10 25	No	No	No	No	No	5	Well Water P	Below Ground	
Larry Bingham	06/08/2010	01 35	No	No	No	No	No	2	Well Water P	Below Ground	
Larry Bingham	07/12/2010	01 00	No	No	No	No	No	4	Well Water P	Below Ground	

Larry Bingham	08/01/2010	11 15	No	No	No	No	No	3	Well Water P Below Ground
Larry Bingham	09/02/2010	10 45	No	No	No	No	No	2	Well Water P Below Ground
Larry Bingham	10/02/2010	05 25	No	No	No	No	No	5	Well Water P Below Ground
Larry Bingham	11/02/2010	11 25	No	No	No	No	No	2	Well Water P Below Ground
mk	01/26/2011	10 00	No	No	No	No	No	4	Well Water P Below Ground
mk	02/01/2011	10 00	No	No	No	No	No	4	Well Water P Below Ground
mk	02/12/2011	12 16	No	No	No	No	No	5	Well Water P Below Ground
mk	03/04/2011	02 09	No	No	No	No	No	5	Well Water P Below Ground
mk	04/05/2011	10 19	No	No	No	No	No	5	Well Water P Below Ground
cm	05/04/2011	10 19	No	No	No	No	No	5	Well Water P Below Ground
cm	06/01/2011	10 30	No	No	No	No	No	5	Well Water P Below Ground
cm	08/30/2011	02 00	No	No	No	No	No	5	Well Water P Below Ground
cm	09/30/2011	02 30	No	No	No	No	No	5	Well Water P Below Ground

